

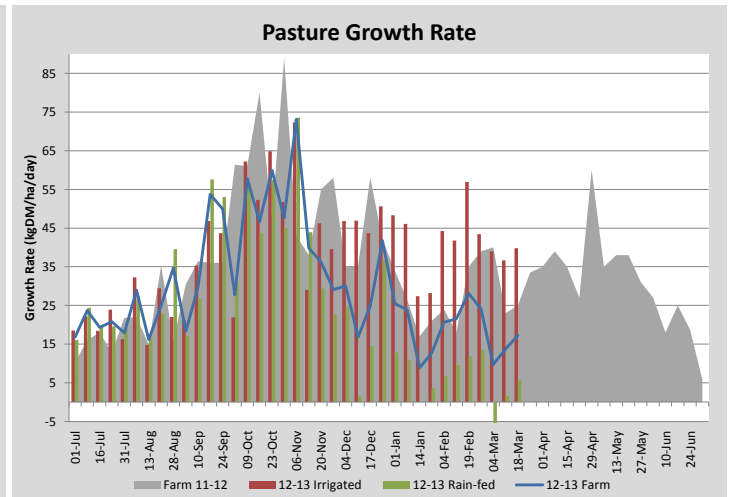
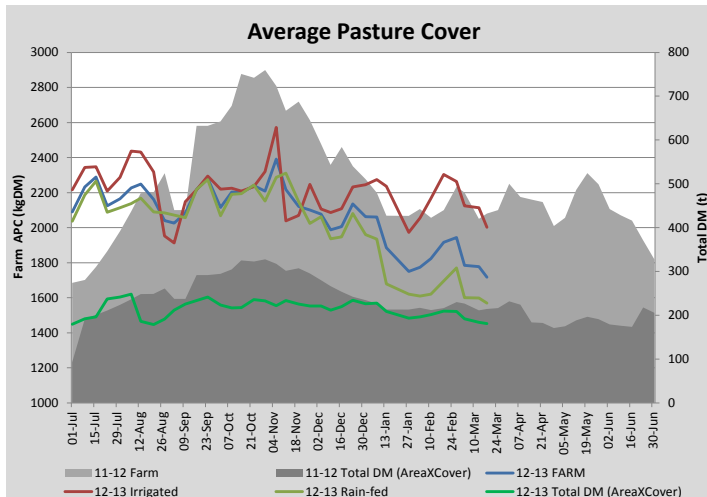
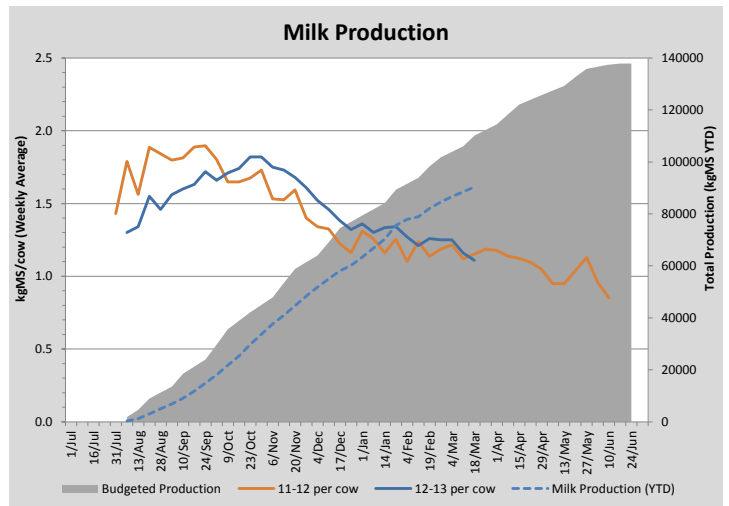
Key Summary Points

- 1** Average pasture cover has dropped further as we eat into irrigated covers
- 2** We have dried off 20 more lower producing/condition cows to ease feed demand
- 3** Key focus this week on progressing with autumn re-seeding and scheduling autumn fertiliser applications

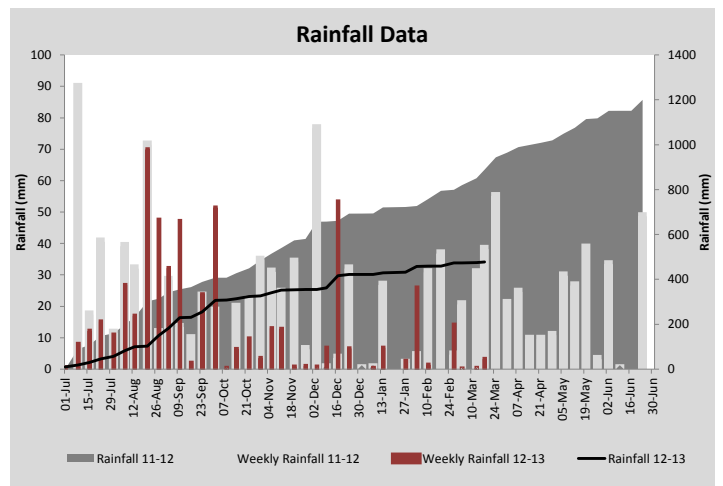
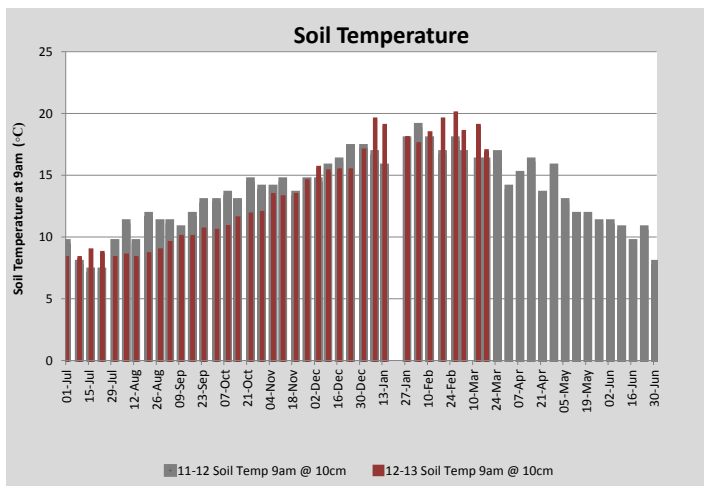
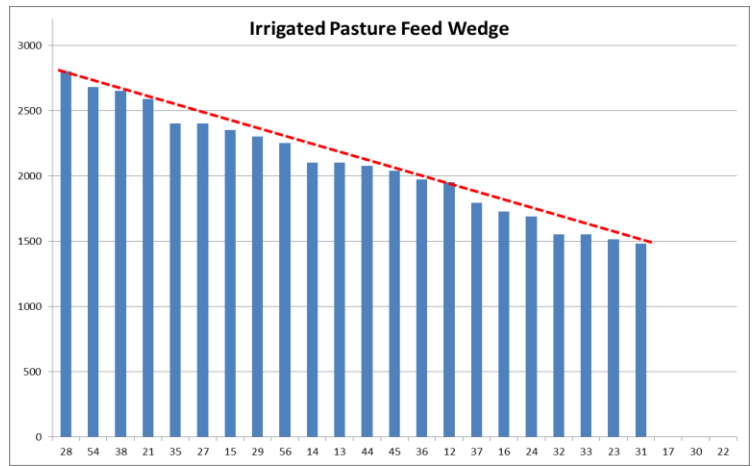
PASTURE INFORMATION	Farm			Irrigated			Rain-fed		
	Last Week	This Week	Variation	Last Week	This Week	Variation	Last Week	This Week	Variation
Grazed milking area (ha)	103.3	105.2	1.9	35.7	35.7	0.00	67.6	69.5	1.88
Rotation Length (days)	57	50		27	27		135	87	
Grazing allocation per day (ha)	1.8	2.1	0.30	1.3	1.3	0.00	0.5	0.8	0.30
Average time since last grazed (days)	55	52	-3	30	27	3	68	65	-3
Leaf appearance rate (days per leaf)	10	10	0	10	10	0	#N/A	#N/A	#N/A
Average Pasture Cover (kgDM/ha)	1777	1716	-61	2114	2002	-112	1599	1570	-29
Pasture Growth Rate (kgDM/ha/day)	14	17	3	37	40	3	2	6	4
Post Grazing Biomass (kgDM/ha)	1450	1450	0						
Nitrogen applied YTD (kgN/ha)	210	210	0	6	0	-6	0	0	0

*Please note all pasture calculations detailed above are based on the current Grazed Milking Area

MILK PRODUCTION	Last Week	This Week	Variation
No cows in milk (vat)	243	223	20.00
Litres per cow	14.9	14.3	0.57
% Fat	4.52	4.50	0.02
% Protein	3.24	3.23	0.01
MS/cow/day	1.16	1.11	0.05
MS/ha/day	2.01	1.87	0.15
BMCC	173	170	3.00
Average Liveweight (kg)			
	Budget	To Date	Variation
Total Milk Production (kgMS)	110141	90403	82%
MS/ha YTD	983	807	-176



Last 7 days					
Milkers Diet	kg DM	ME	CP	NDF	\$/cow
Pasture Intake	7.0	11.0	0.0	0.0	0.0
Concentrates	5.0	11.0	0.0	0.0	0.0
Silage	5.0	8.5	0.0	0.0	0.0
Grazed forage	0.0	0.0	0.0	0.0	0.0
Other feeds	0.0	0.0	0.0	0.0	0.0
Total	17	174.5	0	0	0
Target	17		0	0	0



Analysis			
Expected growth rate next 7 days (kgDM/ha/day)	14	Target Leaf Grazing Stage	3.0
Total Demand from Pasture (kgDM/ha/day)	16	Predicted APC 7 days time	1703
APC balance (kgDM/ha/day)	-2	Predicted APC Change	-13.8

Discussion

It looks like some good autumn rain is on the way which should immediately boost irrigated growth rates (recently only intermittent irrigation due to available water) and hopefully be sufficient to start the rain-fed growing. We are making use of any remaining available standing cover on rain-fed paddocks this week which will help extend the irrigated rotation length (1/45th of the irrigated platform used per day for the next 7 days). This will help build cover on the irrigated paddocks and subsequently help us to stay off the rain-fed paddocks following the rain to allow re-growth. Cow production has slipped slightly however cow condition is reasonable (4.7 average in milkers). We are currently planning our capital/maintenance fertiliser program and will target capital applications to paddocks under the centre pivot where we have identified phosphorus levels as a key limitation to growth this season. Current levels are as low as 14 (mg/kg) Olsen P on some paddocks and this will be substantially limiting potential growth.

18 March 2013

