

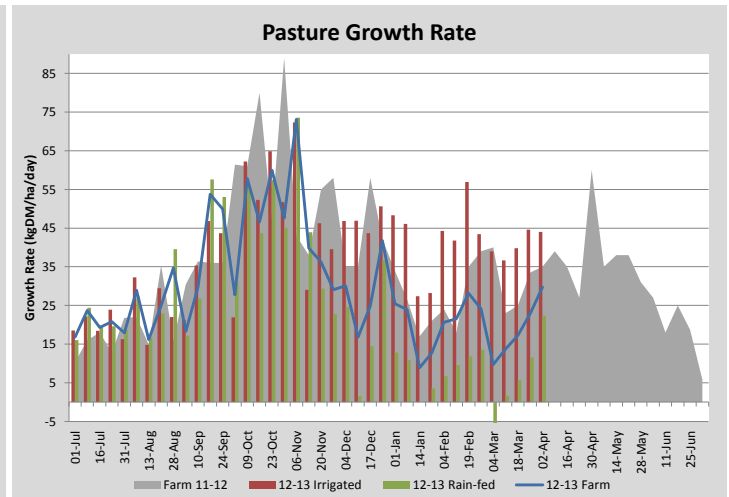
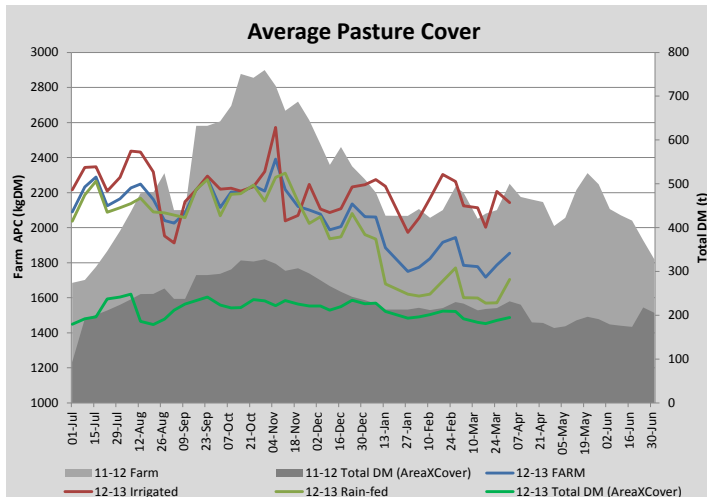
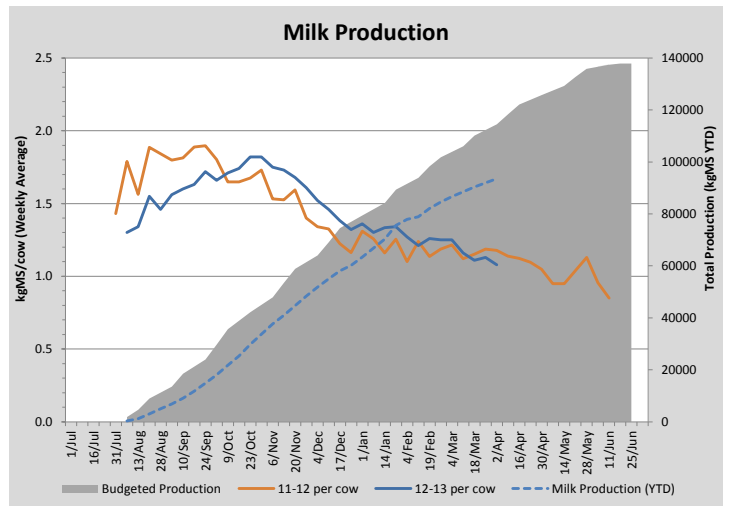
## Key Summary Points

- 1** Average cover continues to build
- 2** The lack of follow up rain is likely to limit the continued growth response of the rain-fed pasture
- 3** Milk production continues to dip as we start using our poorest quality silage

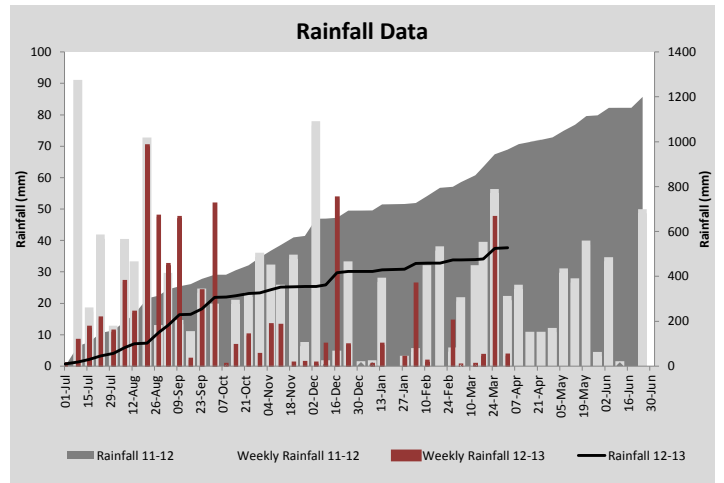
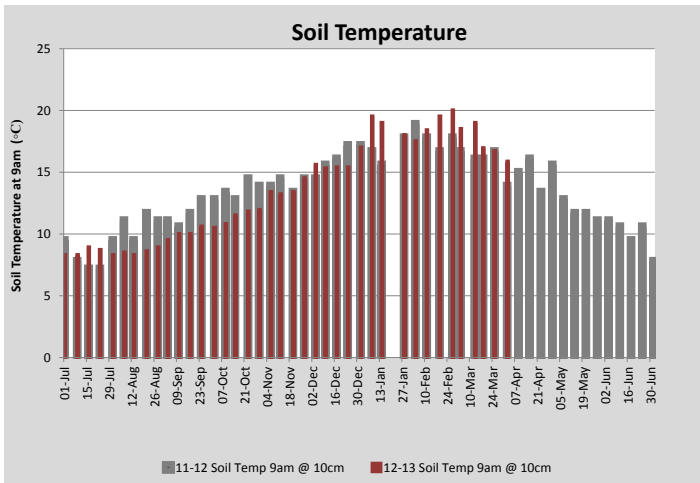
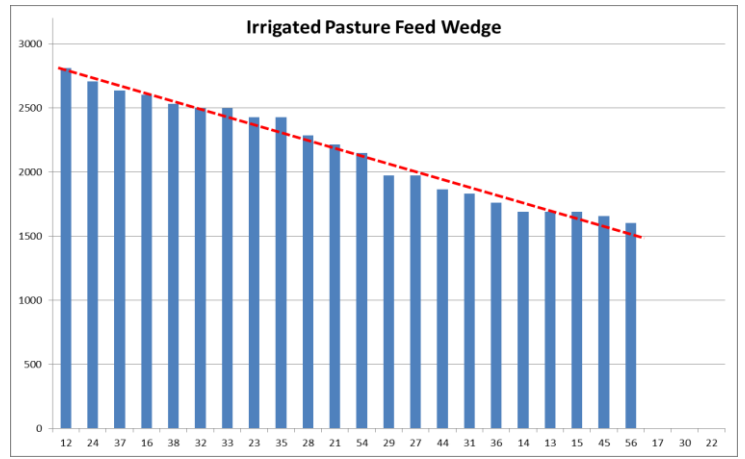
PASTURE INFORMATION	Farm			Irrigated			Rain-fed		
	Last Week	This Week	Variation	Last Week	This Week	Variation	Last Week	This Week	Variation
Grazed milking area (ha)	105.2	105.2	0.0	35.7	35.7	0.00	69.5	69.5	0.00
Rotation Length (days)	50	46		27	27		87	69	
Grazing allocation per day (ha)	2.1	2.3	0.20	1.3	1.3	0.00	0.8	1.0	0.20
Average time since last grazed (days)	50	46	-4	30	28	2	60	55	-5
Leaf appearance rate (days per leaf)	11	11	-0	11	11	0	#N/A	11	#N/A
Average Pasture Cover (kgDM/ha)	1786	1854	67	2206	2143	-63	1570	1705	134
Pasture Growth Rate (kgDM/ha/day)	23	30	7	45	44	-1	12	22	11
Post Grazing Biomass (kgDM/ha)	1500	1450	50						
Nitrogen applied YTD (kgN/ha)	217	217	0	1	0	-1	7	0	-7

\*Please note all pasture calculations detailed above are based on the current Grazed Milking Area

MILK PRODUCTION	Last Week	This Week	Variation
No cows in milk (vat)	223	223	0.00
Litres per cow	14.3	13.4	0.84
% Fat	4.61	4.71	0.10
% Protein	3.31	3.37	0.06
MS/cow/day	1.13	1.08	0.05
MS/ha/day	1.89	1.73	0.16
BMCC	175	178	3.00
Average Liveweight (kg)			
	Budget	To Date	Variation
Total Milk Production (kgMS)	114499	93608	82%
MS/ha YTD	1022	836	-187



Last 7 days					
Milkers Diet	kg DM	ME	CP	NDF	\$/cow
Pasture Intake	8.5	11.0	0.0	0.0	0.0
Concentrates	5.0	11.0	0.0	0.0	0.0
Silage	3.5	8.5	0.0	0.0	0.0
Grazed forage	0.0	0.0	0.0	0.0	0.0
Other feeds	0.0	0.0	0.0	0.0	0.0
<b>Total</b>	<b>17</b>	<b>178.3</b>	<b>0</b>	<b>0</b>	<b>0</b>
<b>Target</b>	<b>17</b>		<b>0</b>	<b>0</b>	<b>0</b>



Analysis			
Expected growth rate next 7 days (kgDM/ha/day)	23	Target Leaf Grazing Stage	3.0
Total Demand from Pasture (kgDM/ha/day)	20	Predicted APC 7 days time	1876
APC balance (kgDM/ha/day)	3	Predicted APC Change	22.3

## Discussion

The expected follow up rains last week didn't eventuate meaning that likely rain-fed growth over the coming week is difficult to estimate. We are starting to run low on silage reserves but will continue supplementing the milking herd with 3.5kgDM/cow/day to allow us to stay on target rotation lengths and continue to build average pasture cover. Dry cows are currently grazing some of the rain-fed paddocks on the milking platform which effectively speeds up our rotation. However, our overall rotation for the entire milking platform remains on track at 45 days. Our final mating results for this season are a 9.8% empty rate with a 74% six week in calf (AI) rate.

# 2 April 2013

