

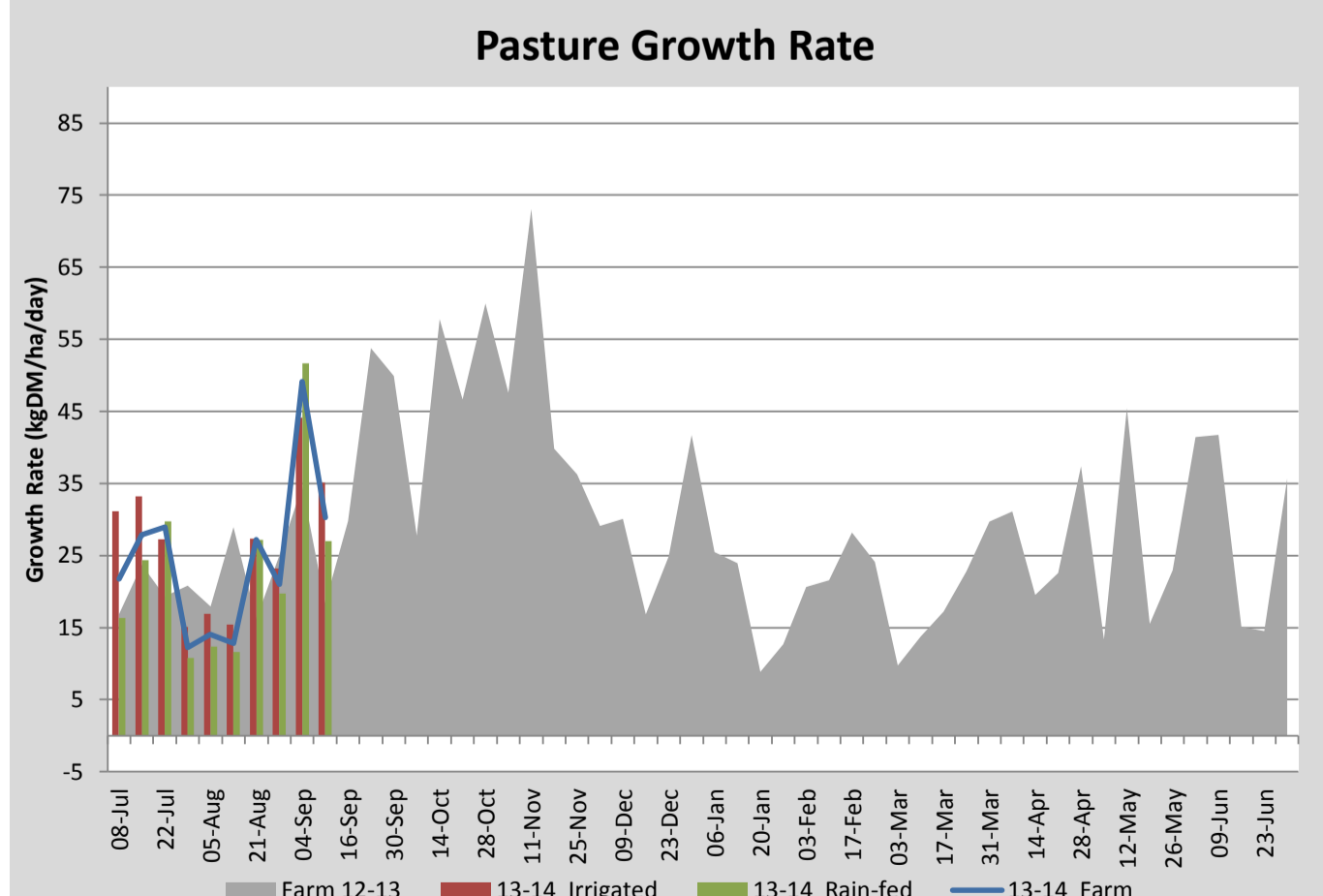
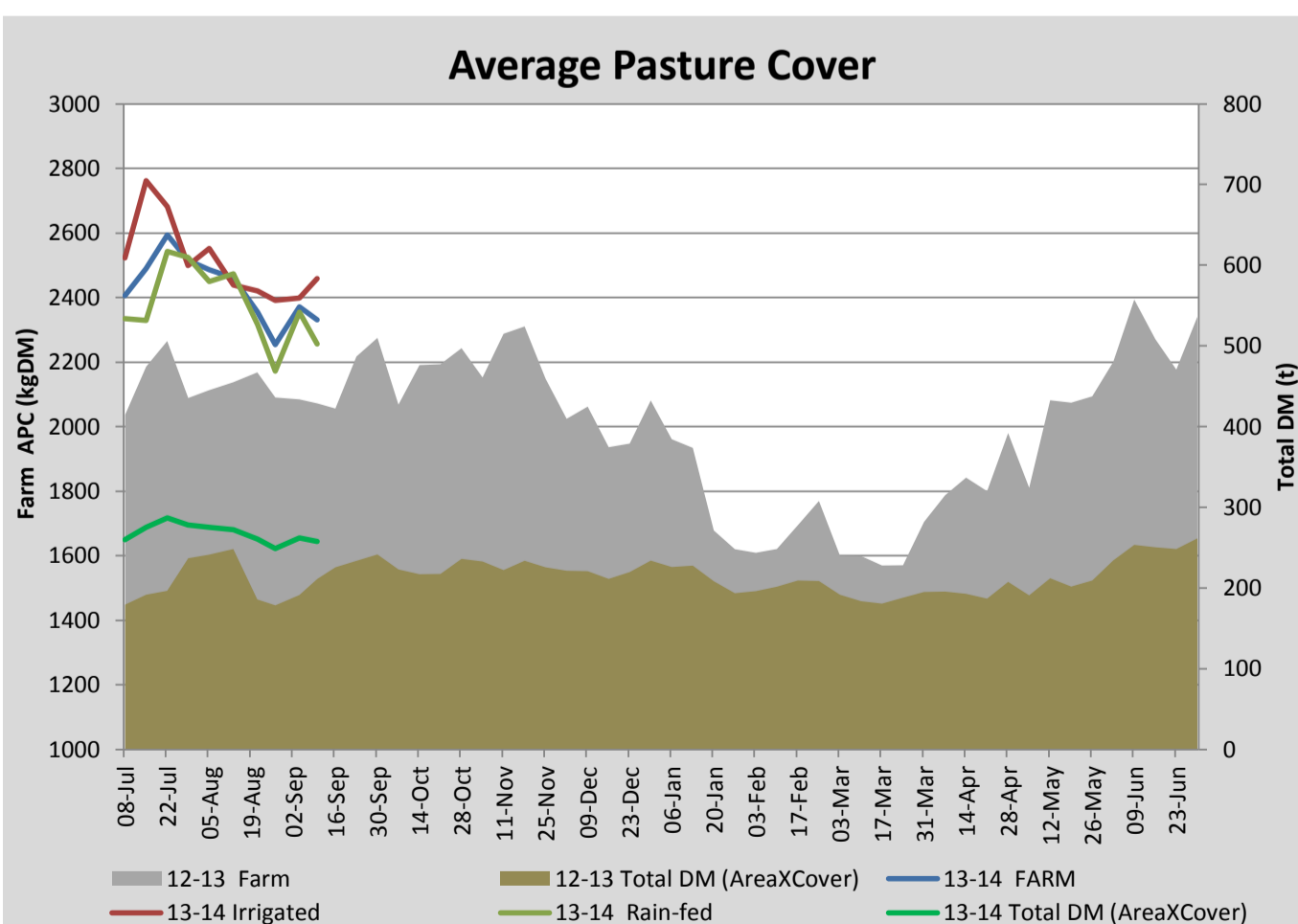
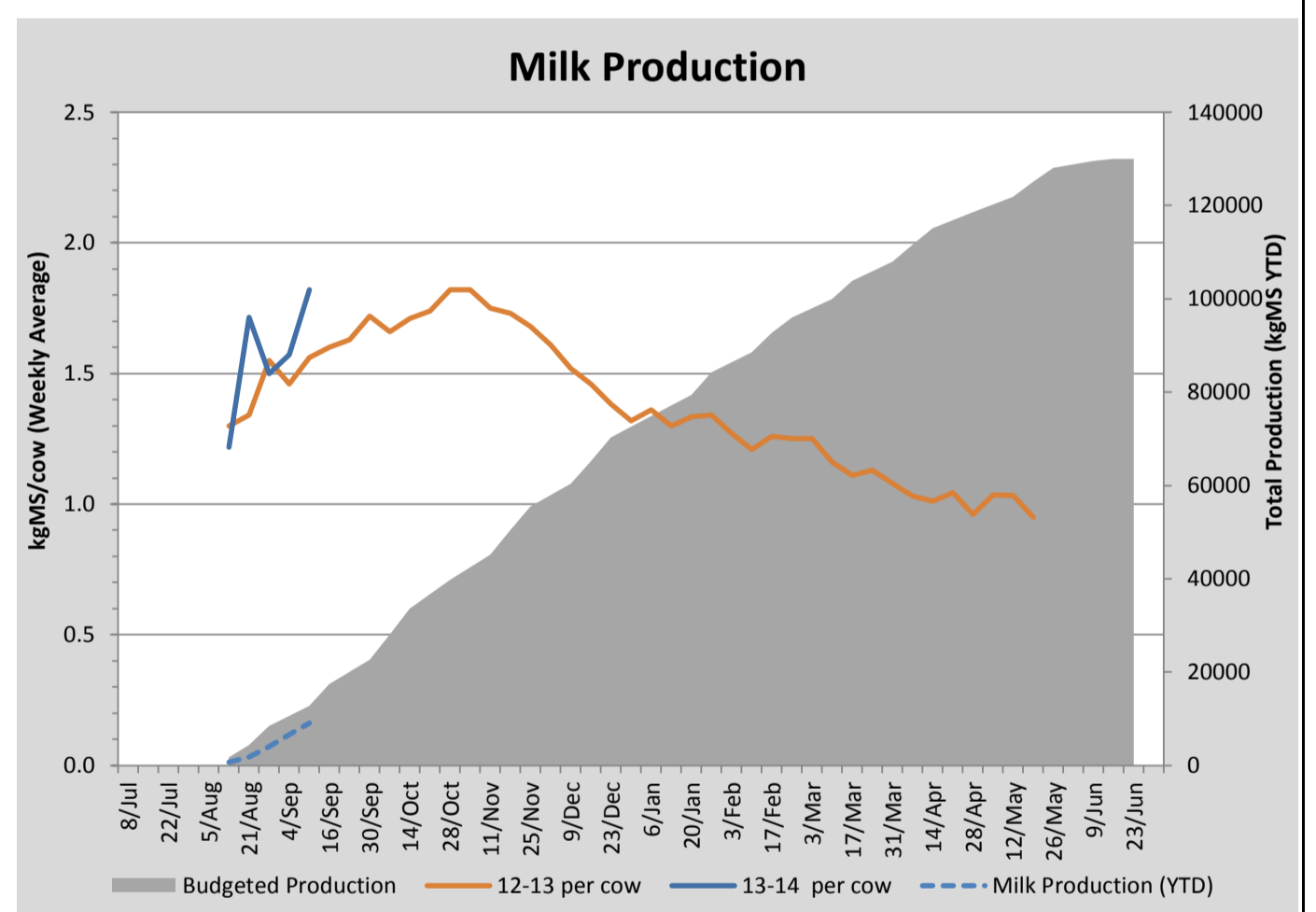
Key Summary Points

- 1** Average pasture cover has dropped slightly to 2331kgDM/ha
- 2** Target rotation for the coming week is 37 days
- 3** Key focus for the coming week is to manage pre-grazing covers (Target 2900kgDM/ha) and start dropping paddocks for silage.

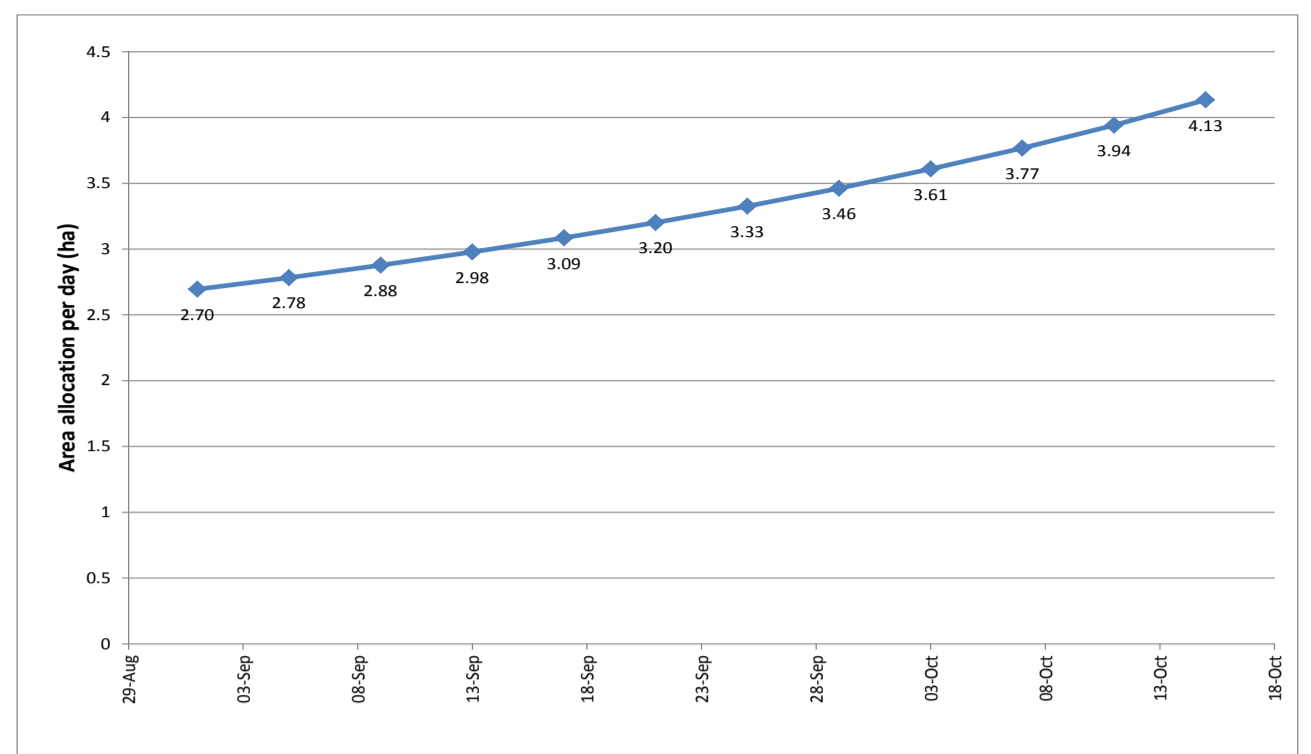
PASTURE INFORMATION	Farm			Irrigated			Rain-fed		
	Last Week	This Week	Variation	Last Week	This Week	Variation	Last Week	This Week	Variation
Grazed milking area (ha)	110.5	110.5	0.0	41.0	41.0	0.00	69.5	69.5	0.00
Rotation Length (days)	58	45	14	137	73	-63	43	36	-7
Grazing allocation per day (ha)	1.9	2.5	0.58	0.3	0.6	0.26	1.6	1.9	0.32
Average time since last grazed (days)	103	65	-38	90	66	-24	110	64	-46
Leaf appearance rate (days per leaf)	16	16	0	16	16	0	16	16	0
Average Pasture Cover (kgDM/ha)	2371	2331	-40	2398	2458	60	2355	2257	-99
Pasture Growth Rate (kgDM/ha/day)	49	30	-19	44	35	-9	52	27	-25
Post Grazing Biomass (kgDM/ha)	1590	1610	20						
Nitrogen applied YTD (kgN/ha)	0	0	0	0	0	0	0	0	0

*Please note all pasture calculations detailed above are based on the current Grazed Milking Area

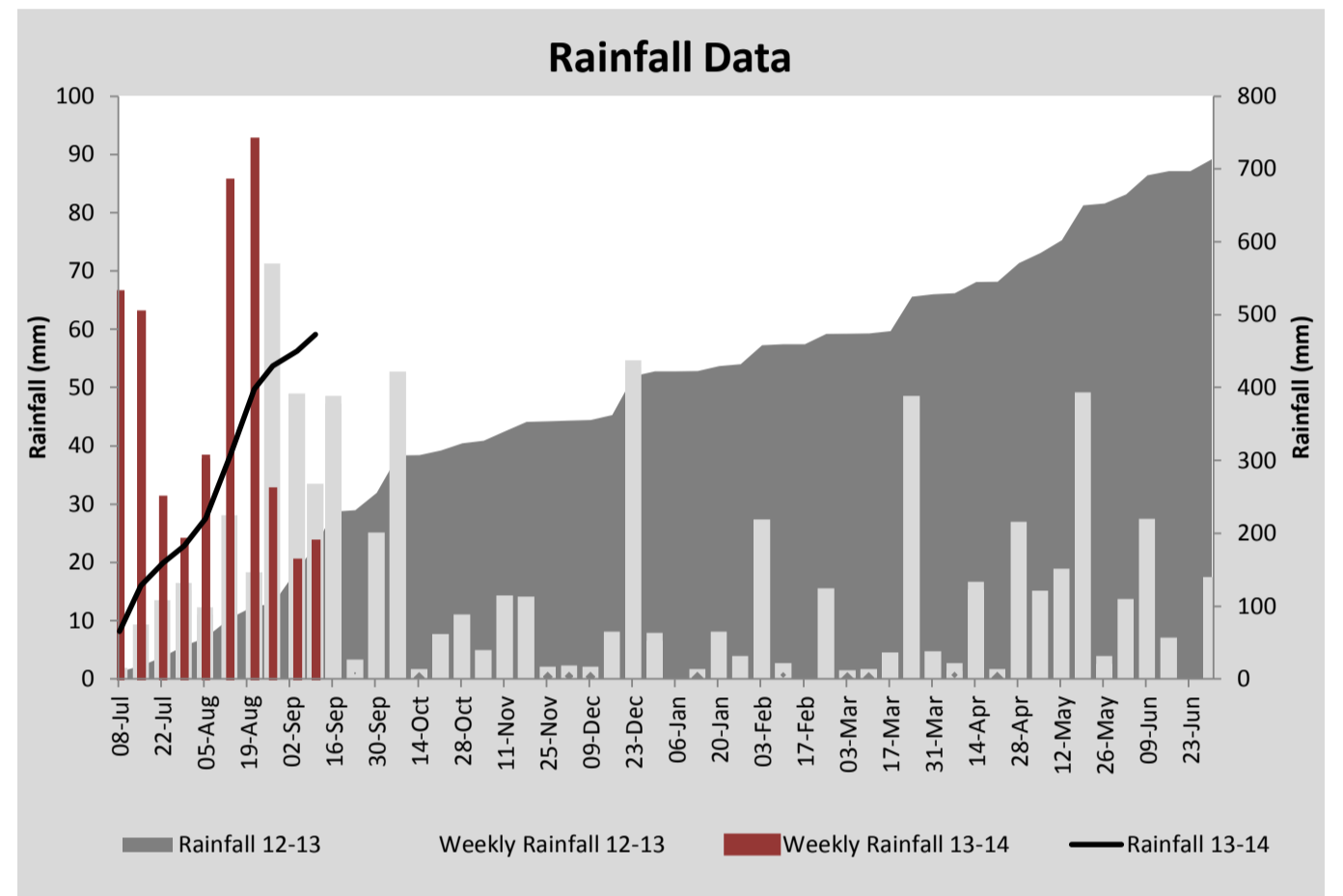
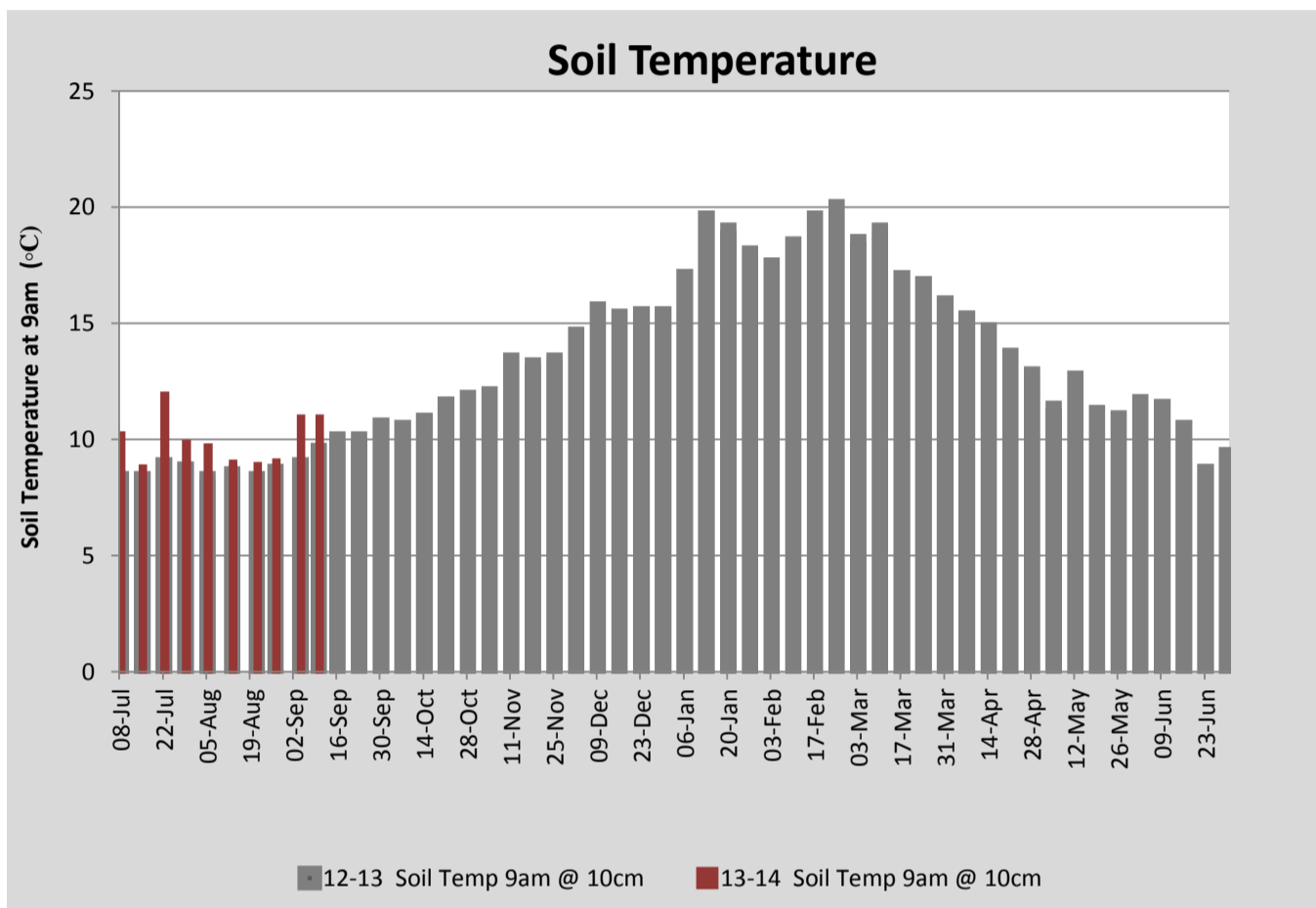
MILK PRODUCTION	Last Week	This Week	Variation
No cows in milk (vat)	210	232	22.00
Litres per cow	23.5	25.3	1.77
% Fat	3.98	4.15	0.16
% Protein	3.06	3.01	0.05
MS/cow/day	1.57	1.82	0.25
MS/ha/day	2.92	3.74	0.82
BMCC	143	138	5.00
Average Liveweight (kg)			
	Budget	To Date	Variation
Total Milk Production (kgMS)	12746	9127	72%
MS/ha YTD	114	83	-31



Last 7 days					
Milkers Diet	kg DM	ME	CP	NDF	\$/cow
Pasture Intake	13.0	12.0	0.0	0.0	0.0
Concentrates	4.0	12.0	0.0	0.0	0.0
Silage	0.0	0.0	0.0	0.0	0.0
Grazed forage	0.0	0.0	0.0	0.0	0.0
Other feeds	0.0	0.0	0.0	0.0	0.0
Total	17	204	0	0	0
Target	17		0	0	0



Daily area allocation forecast for the milking platform



Analysis			
Expected growth rate next 7 days (kgDM/ha/day)	30	Target Leaf Grazing Stage	2.5
Total Demand from Pasture (kgDM/ha/day)	32	Predicted APC 7 days time	2318
APC balance (kgDM/ha/day)	-2	Predicted APC Change	-13.5

Discussion

Average pasture cover has dropped slightly over the past week with overcast weather and cooler temperatures. We expect this to hold over the coming week with similar weather being forecast. The target rotation length for the coming week is 37 days (2.9 ha/day). Target pregrazing cover at present is 2900kgDM/ha at a leaf stage of 2 to 2.5. We will start dropping paddocks for silage in the coming week. We will also be looking to apply urea to all paddocks with covers below 2000kgDM/ha on both the runoff and milking platform. Milksolids per cow have continued to increase this week to 1.82kgMS/cow/day.

10 September 2013

