

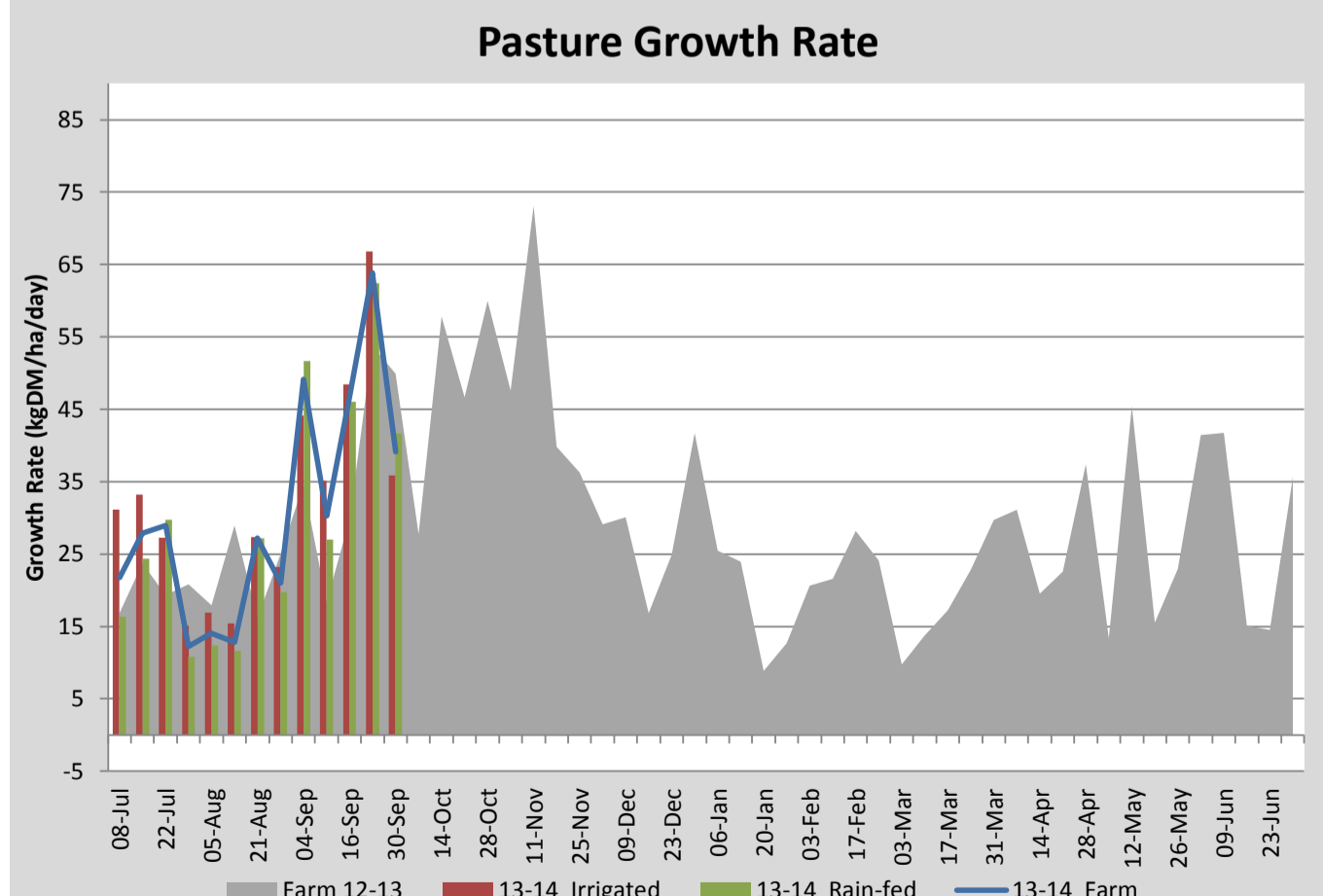
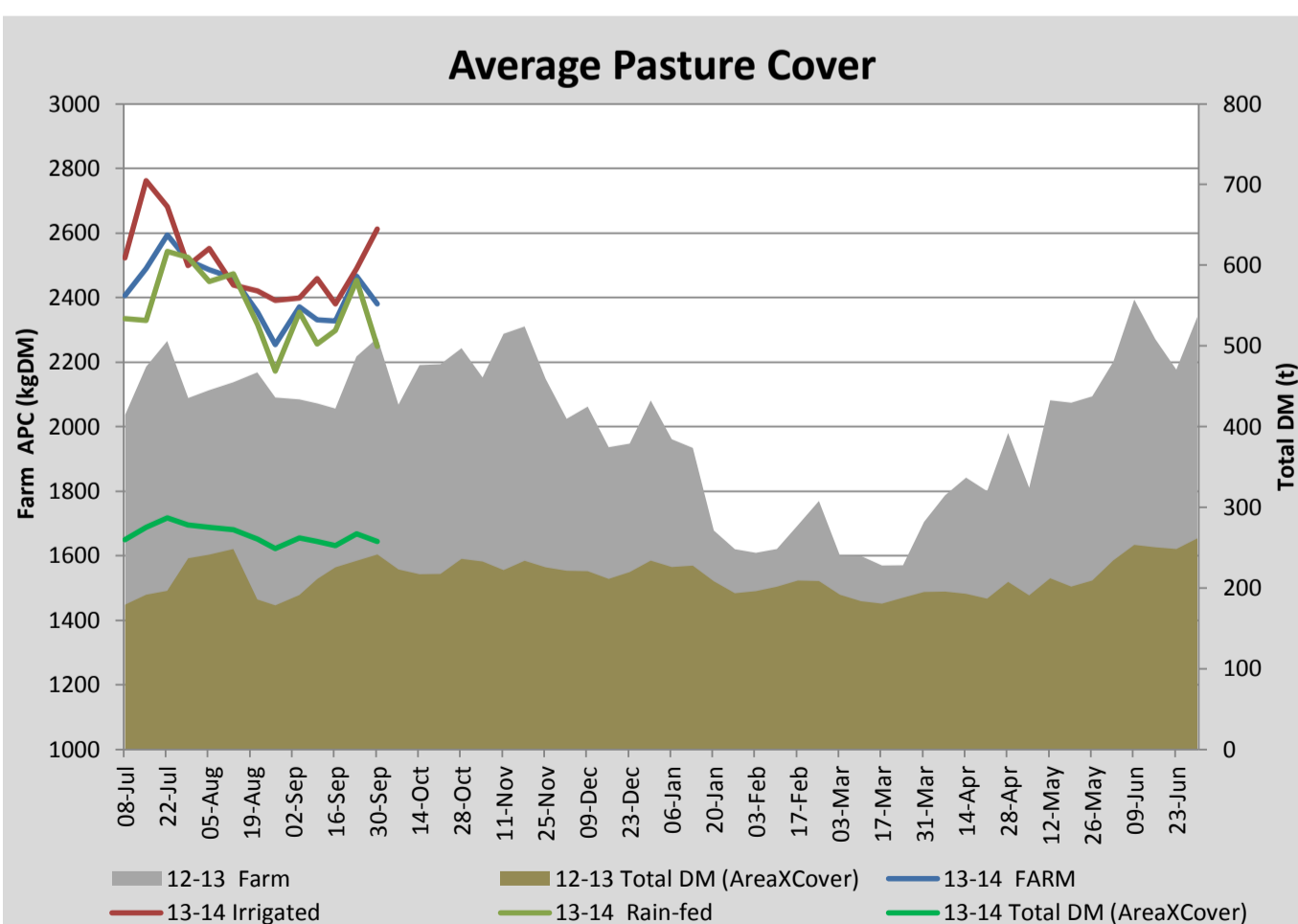
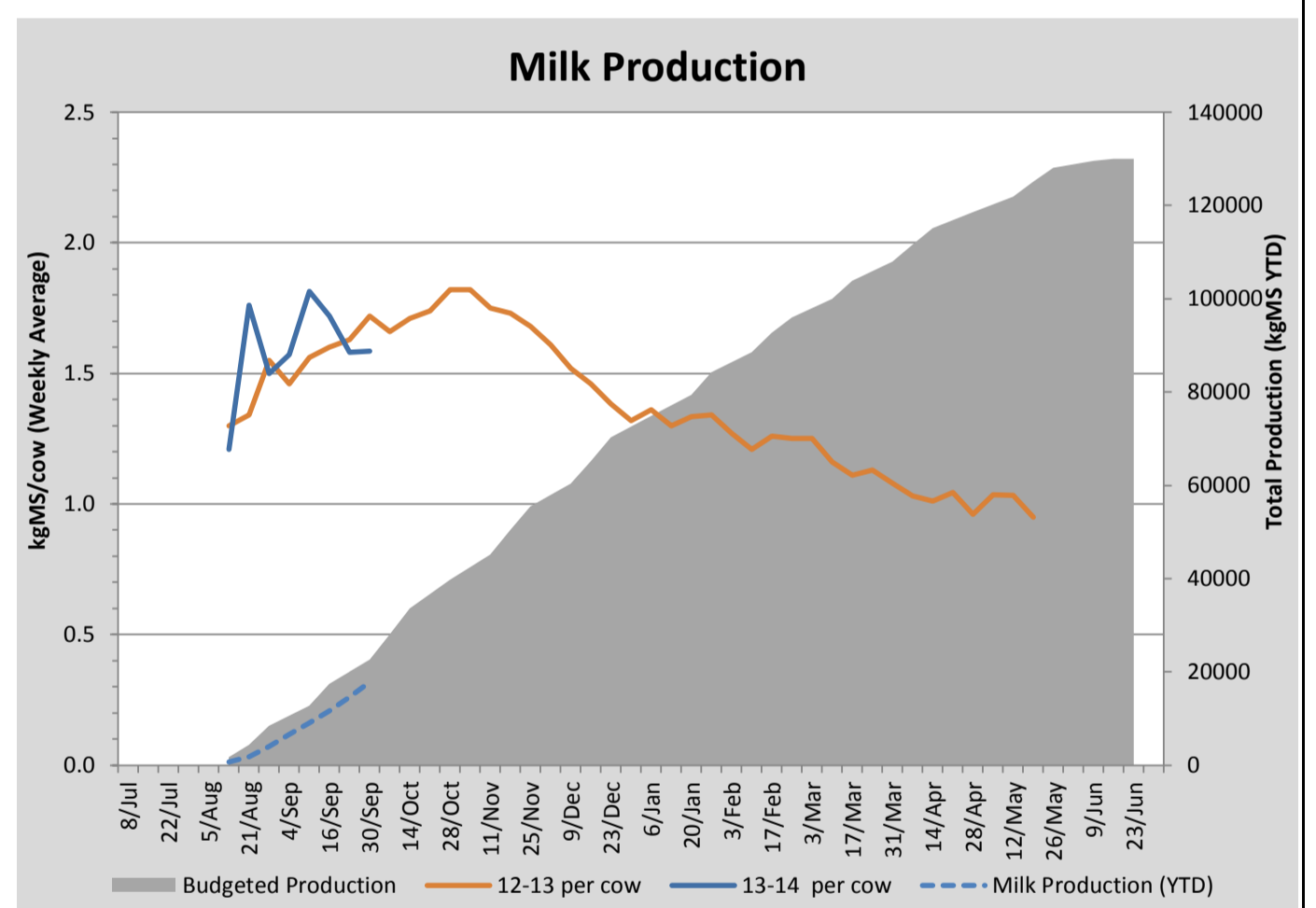
Key Summary Points

- 1 Average pasture cover has dropped this week to 2379kgDM/ha with an average growth rate of 39kgDM/ha/day
- 2 We will try to maintain a 30 day rotation for the coming week
- 3 Milk solid production held this week at 1.59kgMS/cow/day

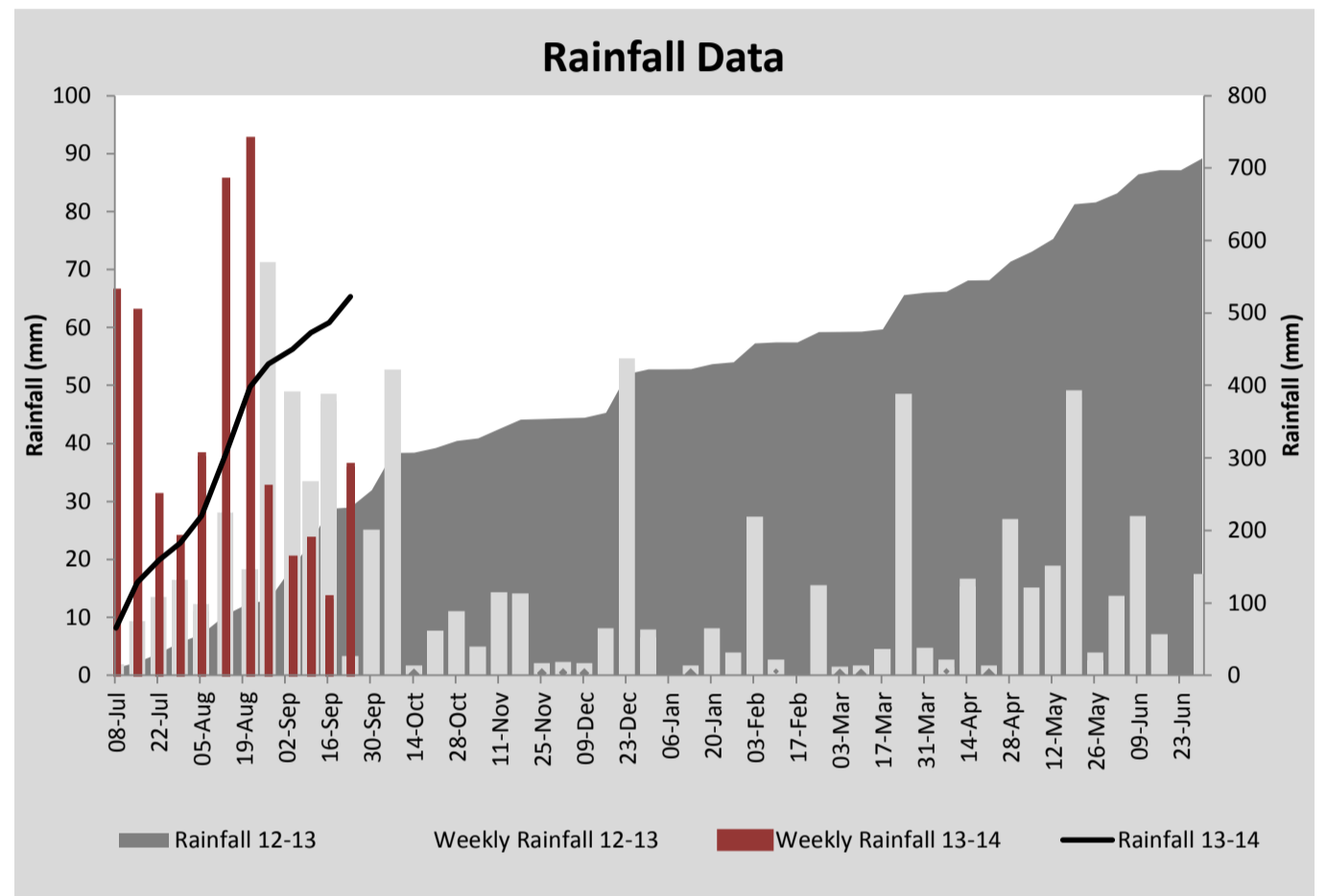
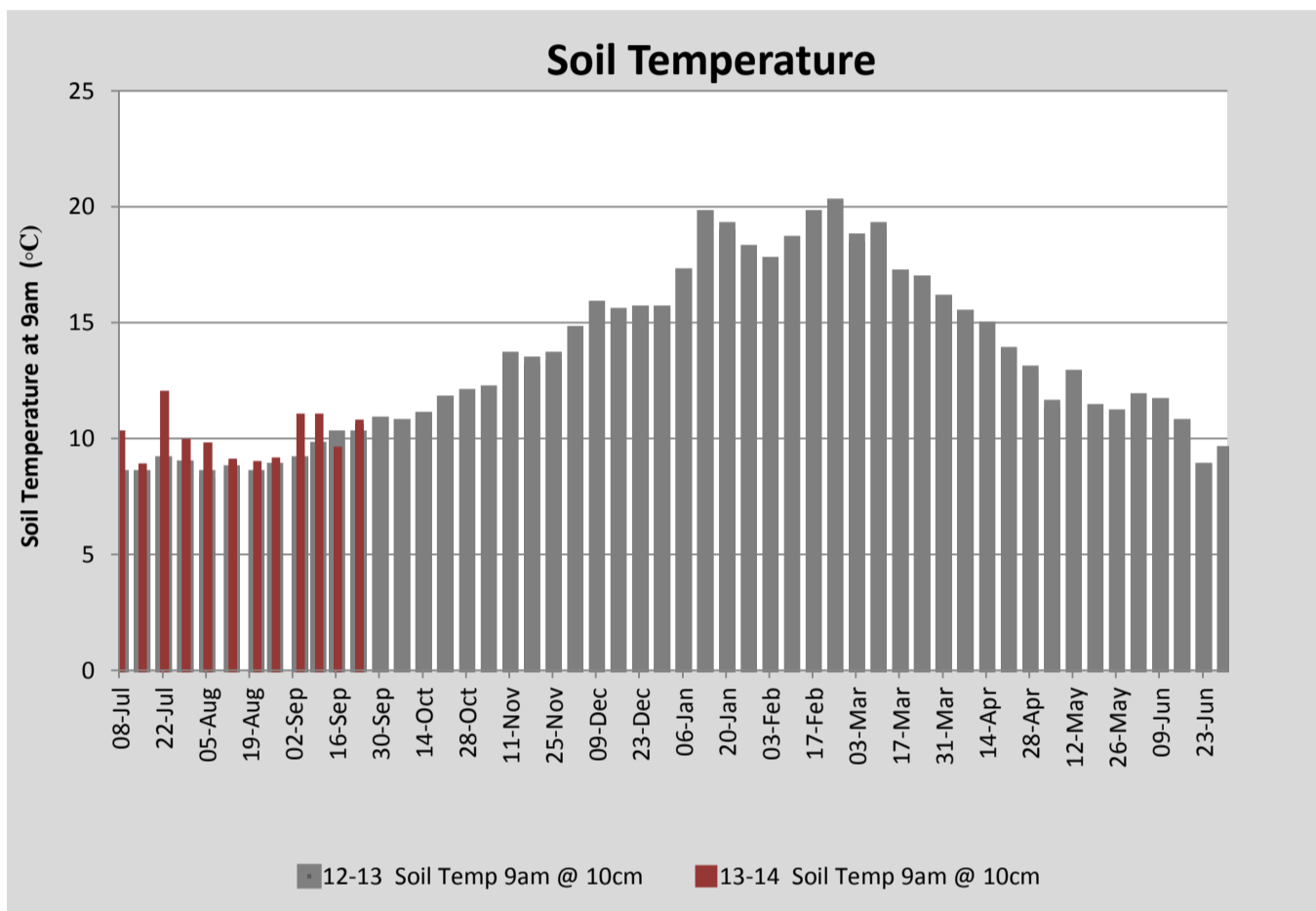
PASTURE INFORMATION	Farm			Irrigated			Rain-fed		
	Last Week	This Week	Variation	Last Week	This Week	Variation	Last Week	This Week	Variation
Grazed milking area (ha)	108.4	108.4	0.0	38.9	38.9	0.00	69.5	69.5	0.00
Rotation Length (days)	36	31	-5	43	49	6	34	26	-8
Grazing allocation per day (ha)	3.0	3.5	0.51	0.9	0.8	0.11	2.1	2.7	0.62
Average time since last grazed (days)	56	57	1	45	31	-14	62	72	10
Leaf appearance rate (days per leaf)	15	15	0	15	15	0	15	15	0
Average Pasture Cover (kgDM/ha)	2467	2379	-87	2490	2612	122	2454	2249	-205
Pasture Growth Rate (kgDM/ha/day)	64	39	-25	67	36	-31	62	42	-21
Post Grazing Biomass (kgDM/ha)	1630	1760	130						
Nitrogen applied YTD (kgN/ha)	7	7	0	0	0	0	0	0	0

*Please note all pasture calculations detailed above are based on the current Grazed Milking Area

MILK PRODUCTION	Last Week	This Week	Variation
Average No cows in milk (vat)	267	285	18.00
Litres per cow	22.2	22.8	0.53
% Fat	4.20	3.99	0.21
% Protein	2.89	3.04	0.15
MS/cow/day	1.58	1.59	0.01
MS/ha/day	3.73	4.00	0.27
BMCC	161	176	15.00
Average Liveweight (kg)			
	Budget	To Date	Variation
Total Milk Production (kgMS)	22590	17810	79%
MS/ha YTD	202	161	-41



Last 7 days					
Milkers Diet	kg DM	ME	CP	NDF	\$/cow
Pasture Intake	13.0	11.5	0%	0%	0.0
Concentrates	3.5	12.0	0.0	0.0	0.0
Silage	0.0	0.0	0.0	0.0	0.0
Grazed forage	0.0	0.0	0.0	0.0	0.0
Other feeds	0.0	0.0	0.0	0.0	0.0
Total	16.5	191.5	0	0	0
Target	16.5		0	0	0



Analysis			
Expected growth rate next 7 days (kgDM/ha/day)	45	Target Leaf Grazing Stage	2.0
Total Demand from Pasture (kgDM/ha/day)	50	Predicted APC 7 days time	2347
APC balance (kgDM/ha/day)	-5	Predicted APC Change	-32.7

Discussion

Average pasture cover has dropped this week with an increase in daily dry matter allocation. We have seen good responses to nitrogen applications on both the run-off and milking platform. If there is a break in the weather in the coming week we will look to get an early cut of silage off the run-off, cutting at an average cover of about 3500kgDM/ha. The total feed allocation for the milkers this week was 19kgDM/cow/day, consisting of 15.5kgDM pasture and 3.5kg pellets (average) in the shed. The 64 cows in the More Milk From Forages (MMFF) trial are being allocated 20kgDM forage per day and 3kg pellets in the shed. There are currently 32 cows yet to calve, all of which look as though they will calve in the coming fortnight.

30 September 2013

