

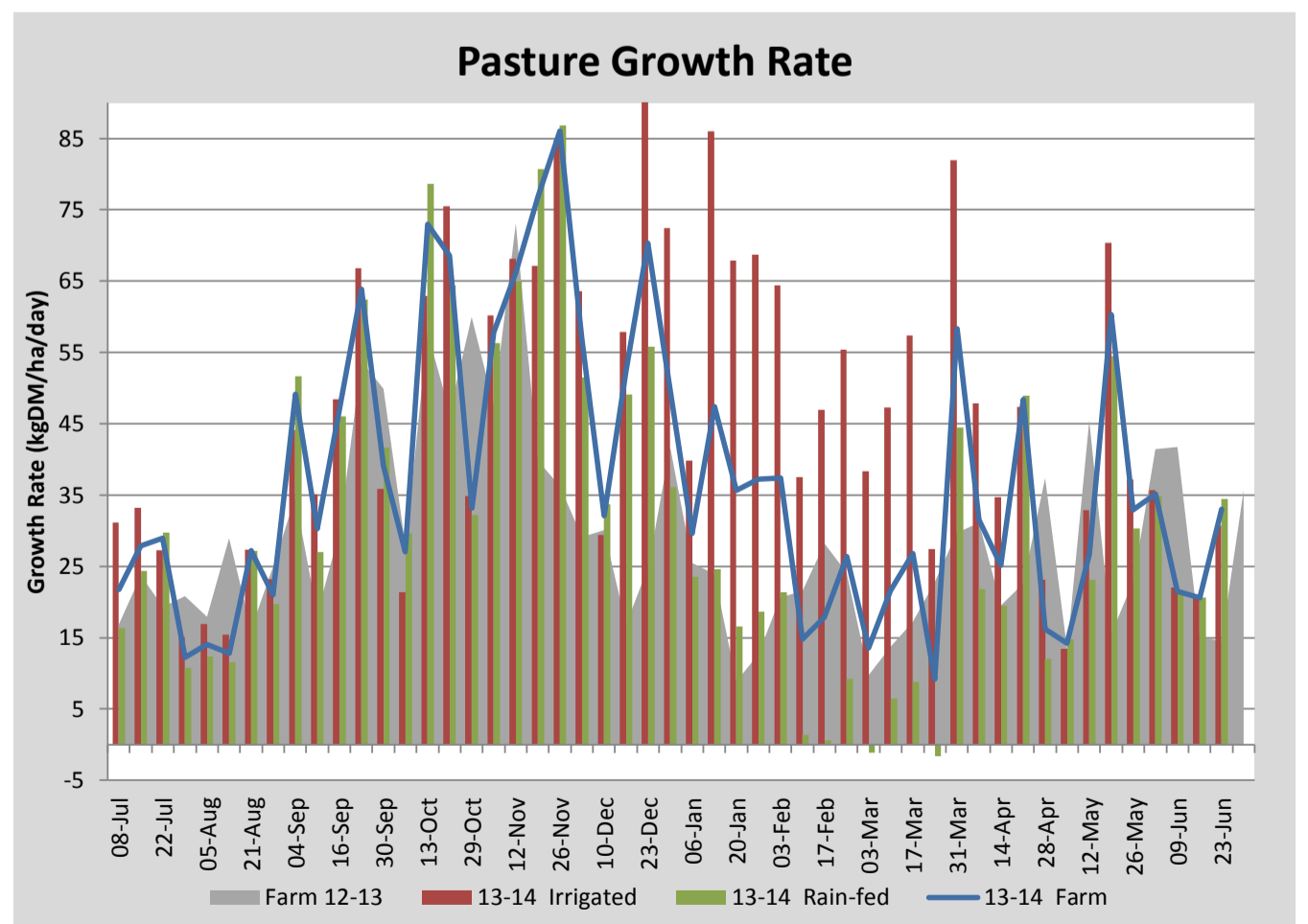
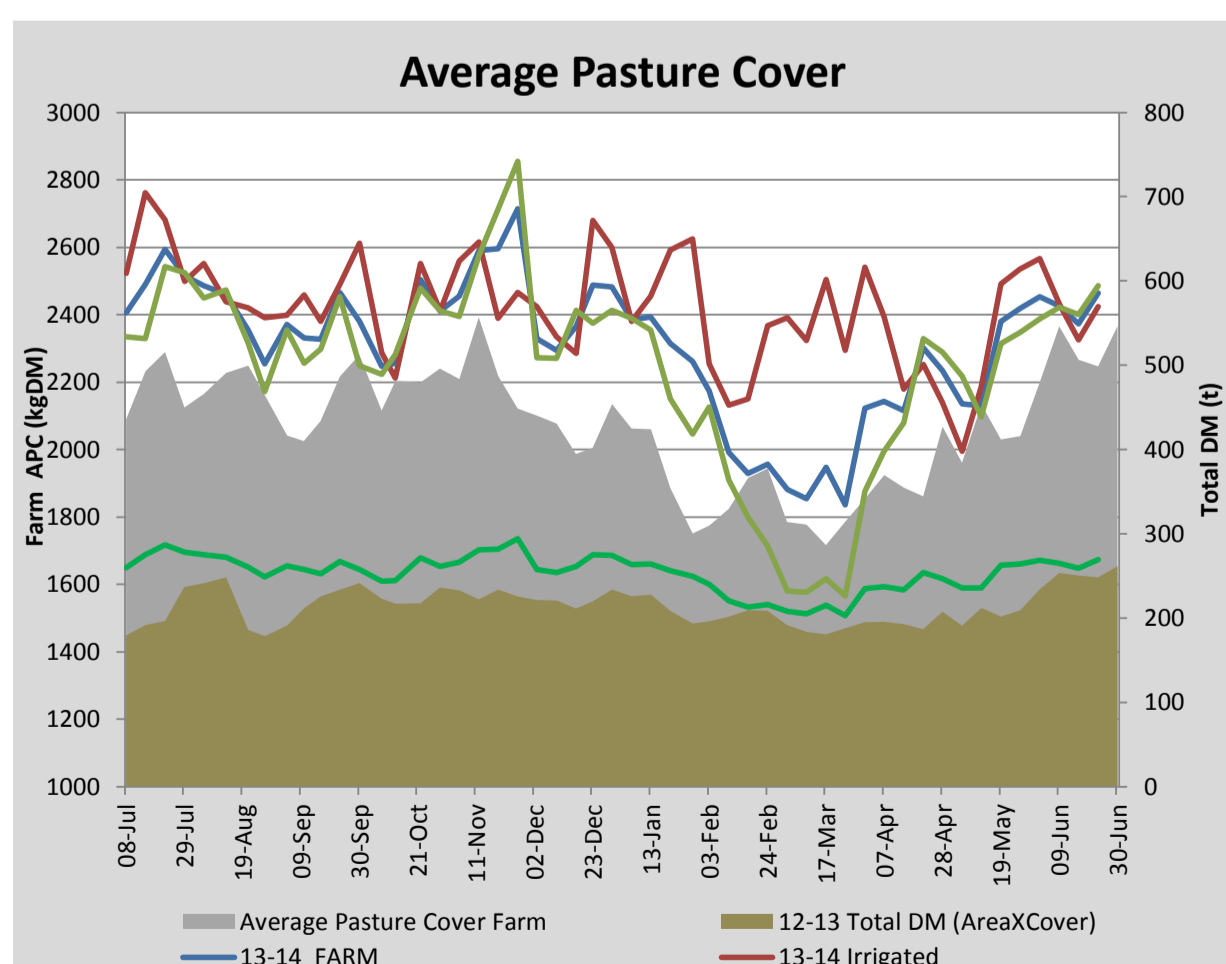
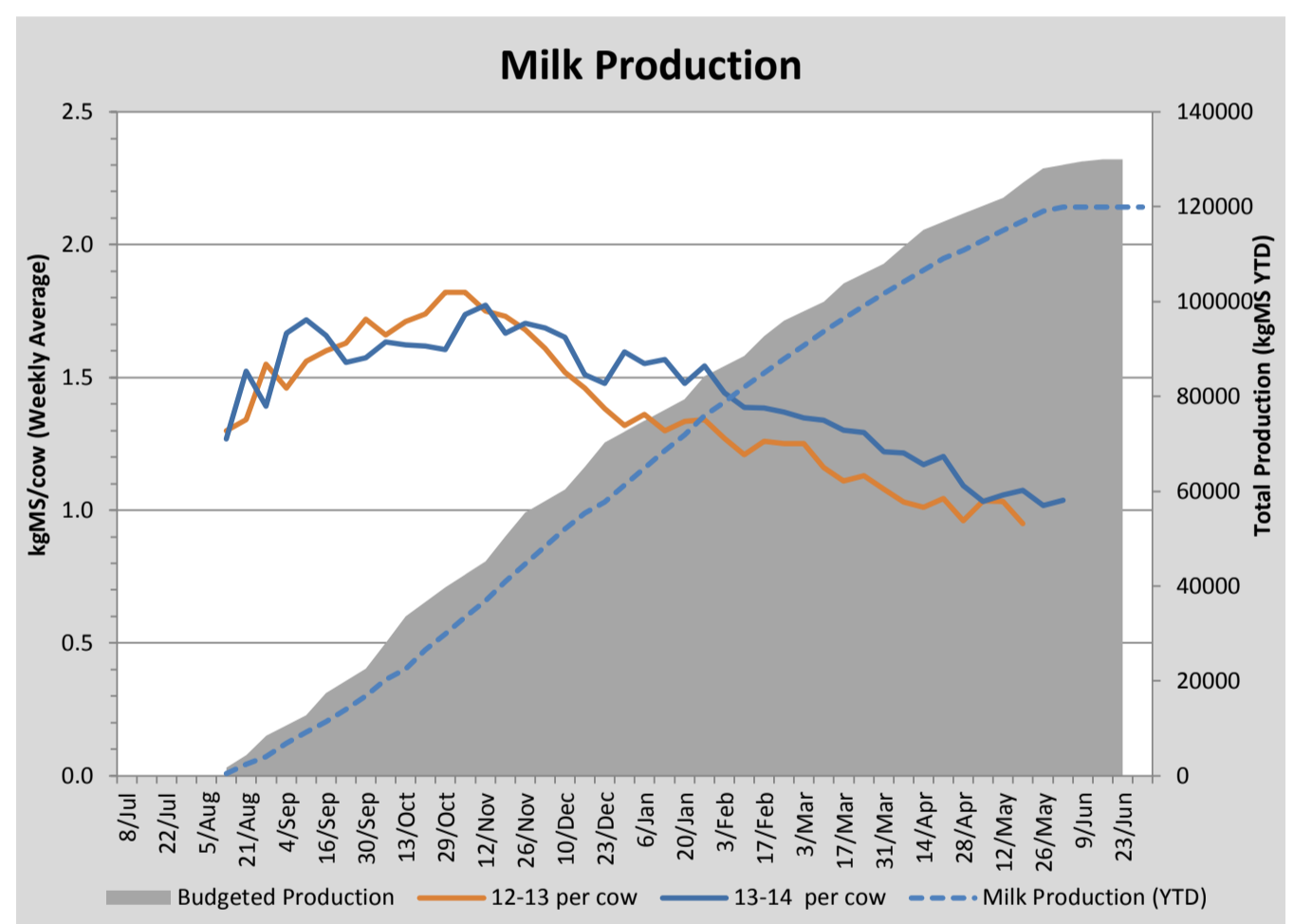
Key Summary Points

- 1 Average pasture cover increased this week to 2464 kgDM/ha with average growth rates increasing to 33 kgDM/ha/day.
- 2 All stock were vaccinated this week with R1 heifers also receiving subcutaneous drench and vitamin B12/selenium.
- 3 R1 heifers will be transitioned on to the rape crop in the coming week.

| PASTURE INFORMATION | Farm | | | Irrigated | | | Rain-fed | | |
|---------------------------------------|-----------|-----------|-----------|-----------|-----------|-----------|-----------|-----------|-----------|
| | Last Week | This Week | Variation | Last Week | This Week | Variation | Last Week | This Week | Variation |
| Grazed milking area (ha) | 109.3 | 109.3 | 0.0 | 41.0 | 41.0 | 0.0 | 68.3 | 68.3 | 0 |
| Rotation Length (days) | 87 | 105 | 18 | 53 | 98 | 44 | 142 | 110 | -32 |
| Grazing allocation per day (ha) | 1.3 | 1.0 | -0.2 | 0.8 | 0.4 | -0.4 | 0.5 | 0.6 | 0.1 |
| Average time since last grazed (days) | 75 | 59 | -16 | 46 | 59 | 13 | 92 | 59 | -33 |
| Leaf appearance rate (days per leaf) | 16 | 16 | 0 | 16 | 16 | 0 | 16 | 16 | 0 |
| Average Pasture Cover (kgDM/ha) | 2372 | 2464 | 91 | 2325 | 2425 | 100 | 2400 | 2487 | 87 |
| Pasture Growth Rate (kgDM/ha/day) | 21 | 33 | 12 | 21 | 31 | 10 | 21 | 34 | 14 |
| Post Grazing Biomass (kgDM/ha) | 1330 | 1421 | 91 | | | | | | |
| Nitrogen applied YTD (kgN/ha) | 154 | 160 | 6 | 0 | 9 | 9 | 0 | 4 | 4 |

*Please note all pasture calculations detailed above are based on the current Grazed Milking Area

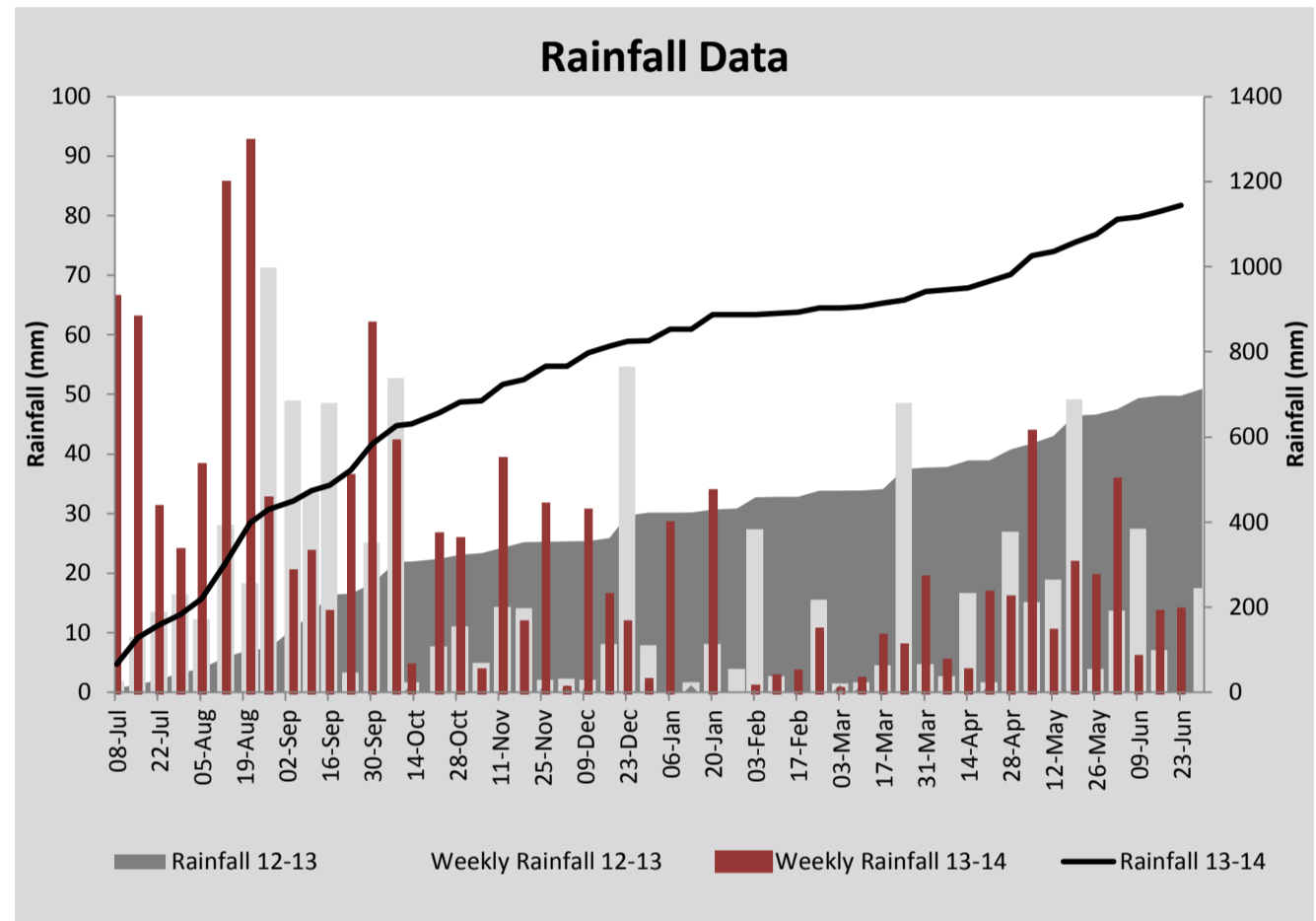
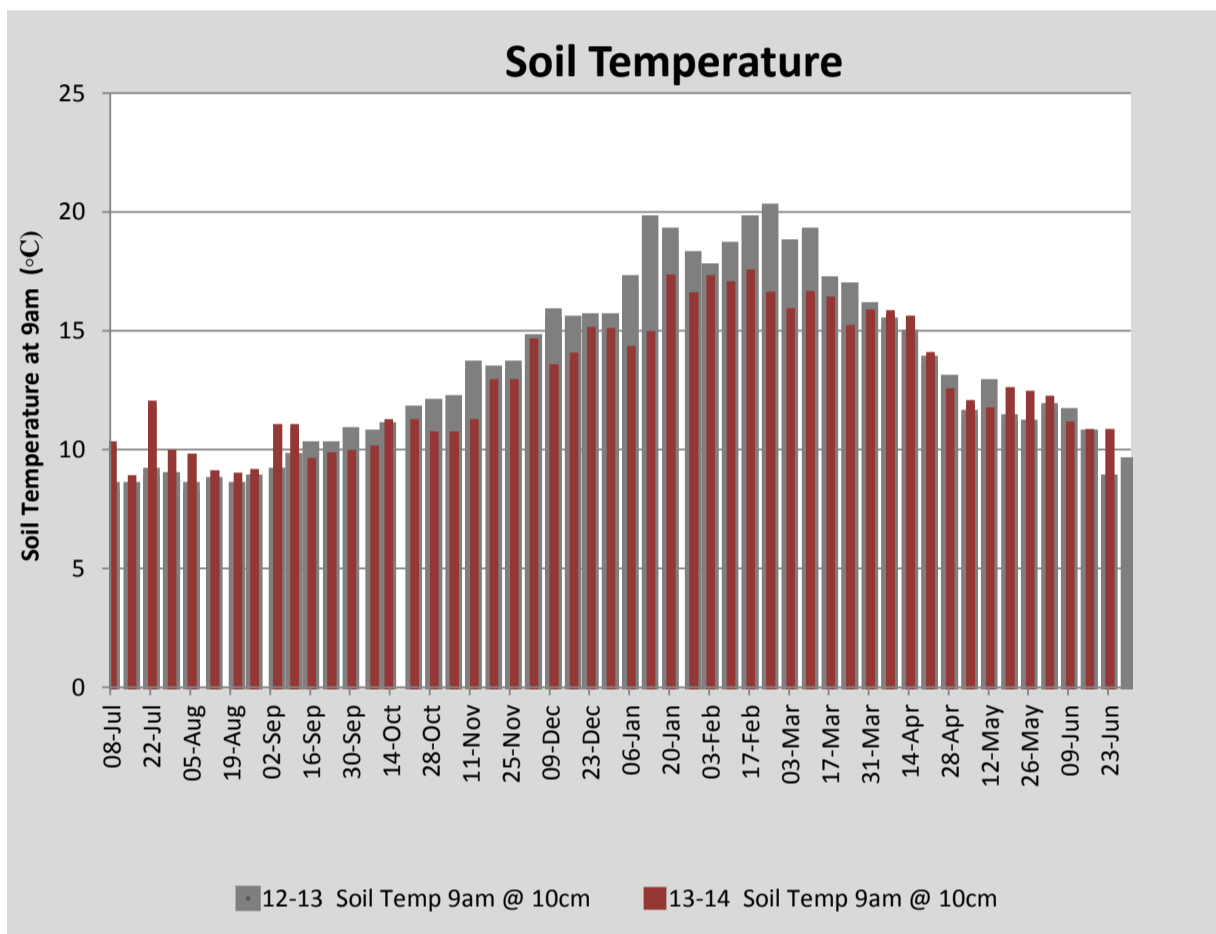
| MILK PRODUCTION | Last Week | This Week | Variation |
|--------------------------------|-----------|-----------|-----------|
| Average No. cows in milk (vat) | 0 | 0 | 0 |
| Litres per cow | #N/A | #N/A | #N/A |
| % Fat | #N/A | #N/A | #N/A |
| % Protein | #N/A | #N/A | #N/A |
| MS/cow/day | #N/A | #N/A | #N/A |
| MS/ha/day | #N/A | #N/A | #N/A |
| BMCC | . | . | |
| Average Liveweight (kg) | . | . | |
| | Budget | To Date | Variation |
| Total Milk Production (kgMS) | 130,000 | 119,966 | 92% |
| MS/ha YTD | 1161 | 1127 | -34 |



| Last 7 days | | | | | |
|----------------|----------|------------|--------------|---------------|----------|
| Milkers Diet | kg DM | MJ ME | CP (%) | NDF (%) | \$/cow |
| Pasture Intake | 0.0 | 0.0 | 0.0 | 0.0 | 0.0 |
| Concentrates | 0.0 | 0.0 | 0.0 | 0.0 | 0.0 |
| Silage | 0.0 | 0.0 | 0.0 | 0.0 | 0.0 |
| Grazed forage | 0.0 | 0.0 | 0.0 | 0.0 | 0.0 |
| Other feeds | 0.0 | 0.0 | 0.0 | 0.0 | 0.0 |
| Total | 0 | 0 | 0.0 | 0.0 | 0 |
| Target | | 191 | 16-18 | >33 | 0 |



Dry cows on the run off block



| Analysis | | | |
|--|----|---------------------------|------|
| Expected growth rate next 7 days (kgDM/ha/day) | 20 | Target Leaf Grazing Stage | 3.0 |
| Total Demand from Pasture (kgDM/ha/day) | 15 | Predicted APC 7 days time | 2496 |
| APC balance (kgDM/ha/day) | 5 | Predicted APC Change | 32.4 |

Discussion

Average pasture cover increased this week to 2464 kg DM/ha with average growth rates increasing to 33 kg DM/ha/day. Demand on the platform has been reduced with the majority of the cows being shifted to the run off. We are trying to build as much cover as possible now as the next More Milk From Forages (MMFF) grazing study will commence early spring. This will reduce the available area on the milking platform by 25ha. Grazing around the MMFF trail paddocks is expected to create a feed deficit late winter/early spring which we hope to manage by deferring grazing of current growth and increasing the concentrate fed in the shed. All stock were vaccinated this week with 7 in 1. The R1 heifers were also drenched (subcutaneous) and received a selenium B12 injection. R1 heifers will be transitioned onto the rape crop this coming week. We will on-off graze the heifers allocating 3 kgDM pasture, 1 kgDM hay and 2 kgDM rape per head per day. We will increase the rape allocation to 3kg/day over the coming weeks.

23 June 2014

