

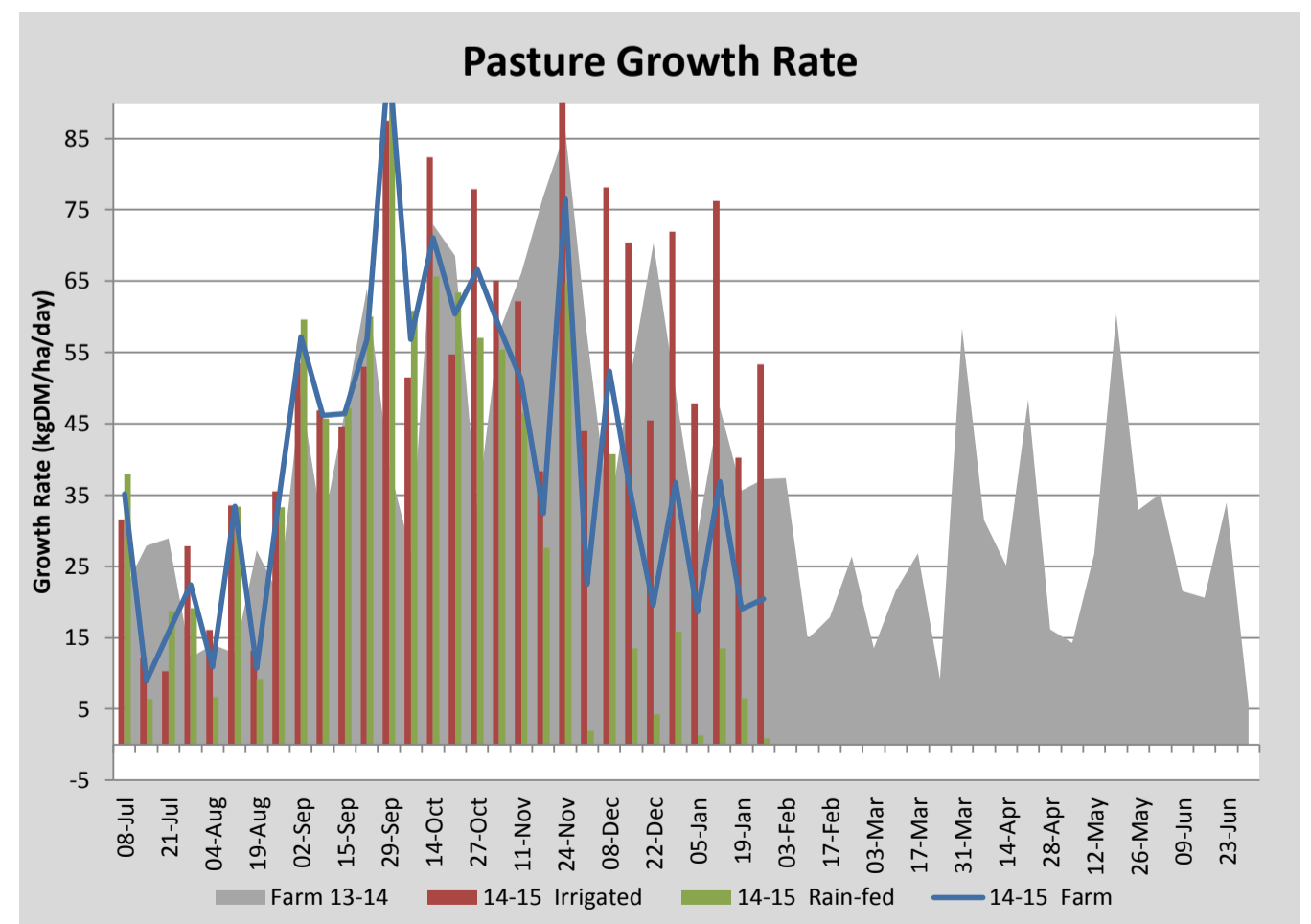
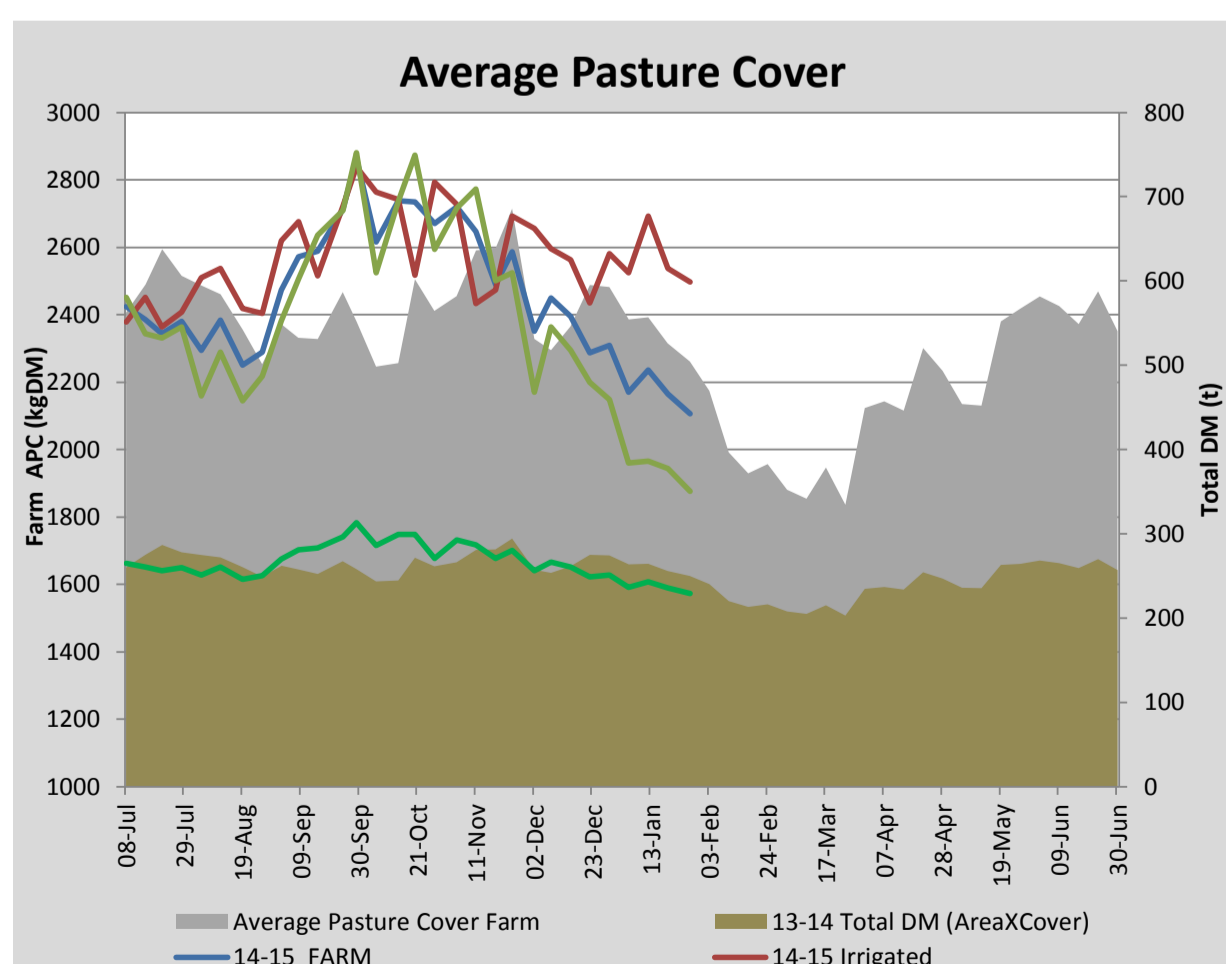
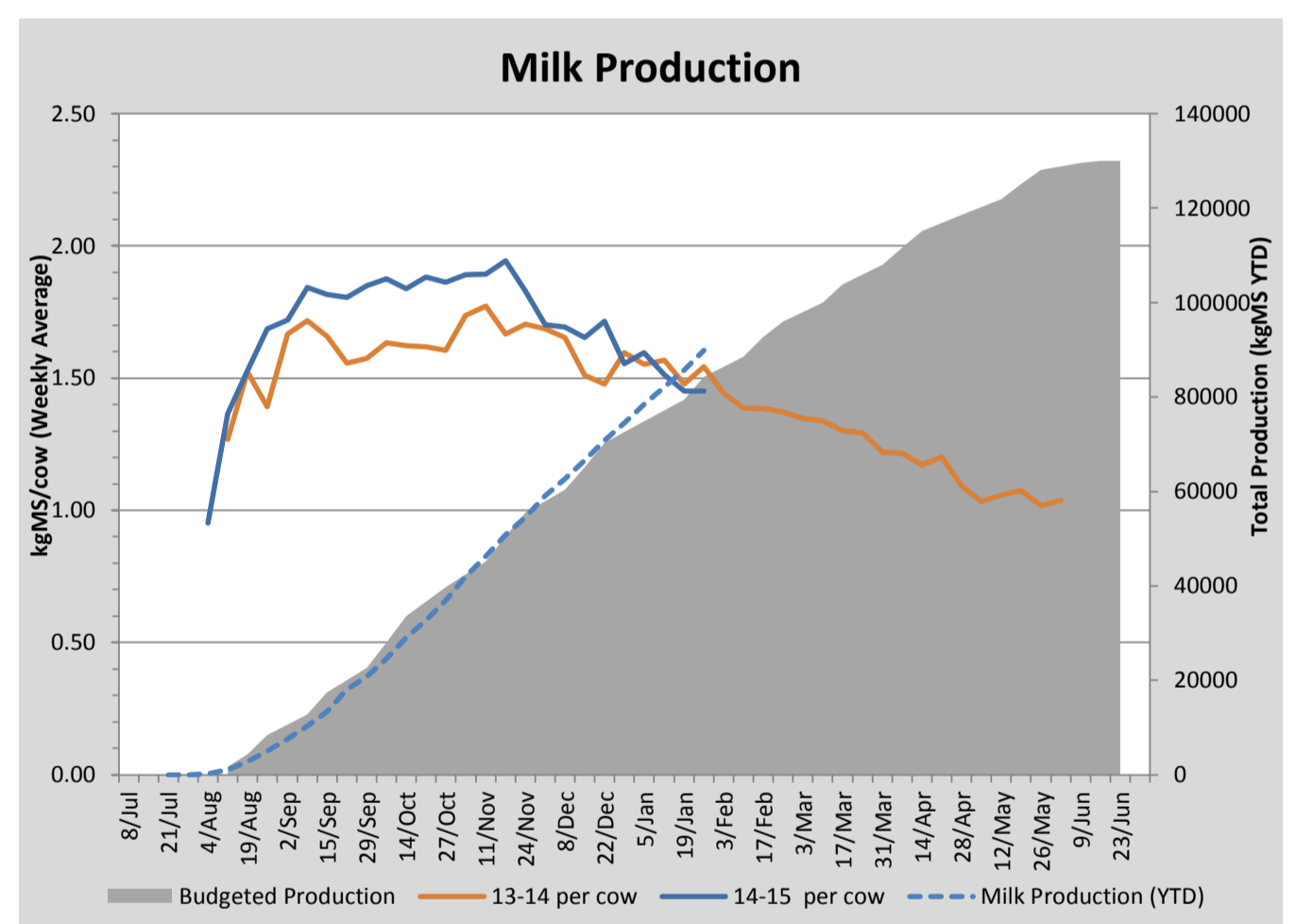
Key Summary Points

- 1 Average pasture cover continued to decrease this week with growth all but stopping on the dryland.
- 2 Cows were pregnancy tested and condition scored this week. The 6 week in calf rate is 76% and average condition score for the herd is 4.7.
- 3 Focus for the coming week is to start grazing the Pasja crop with the milkers (2kgDM/cow/day) and use R2 heifers to clean up residuals on the dryland portion of the milking platform.

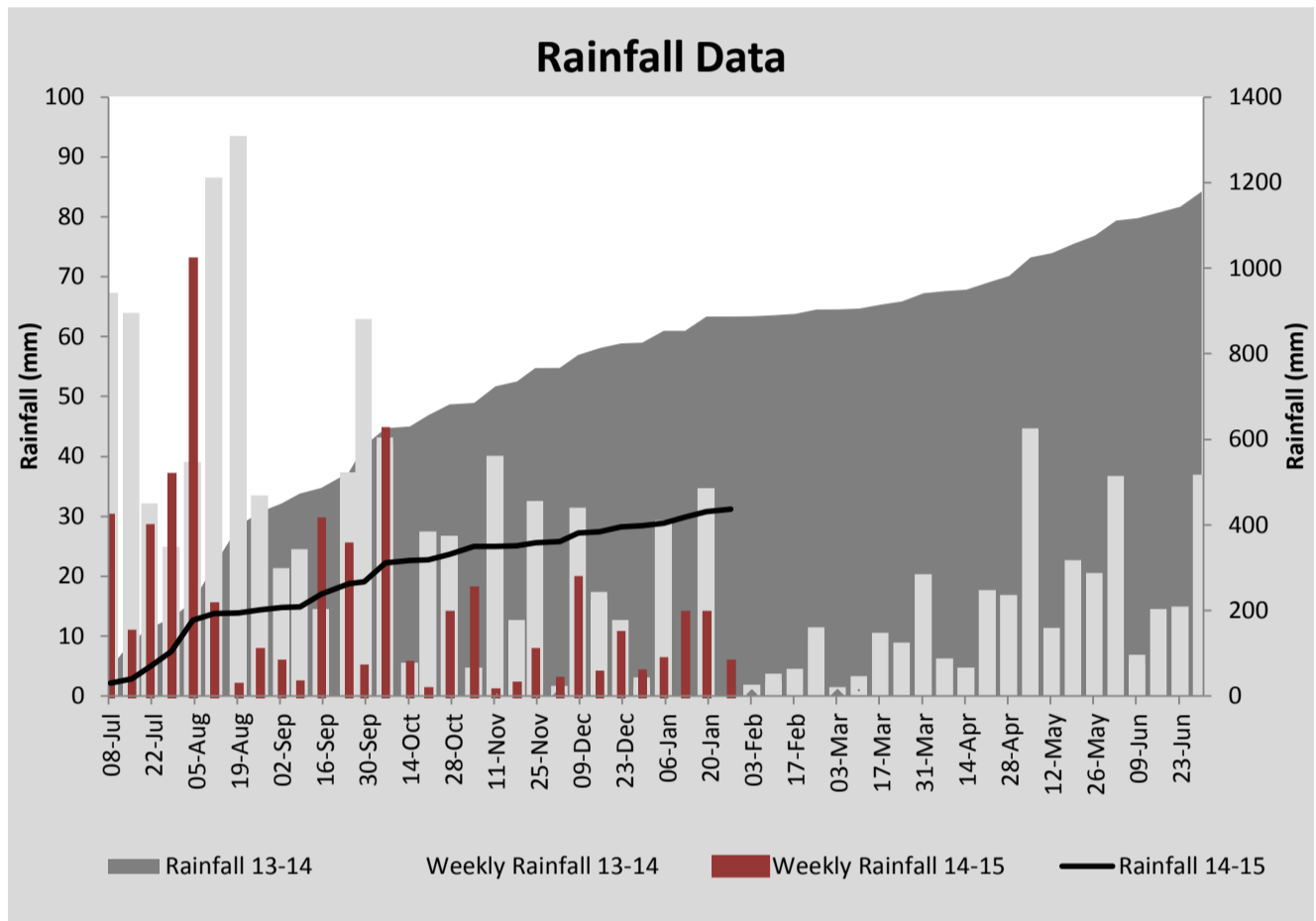
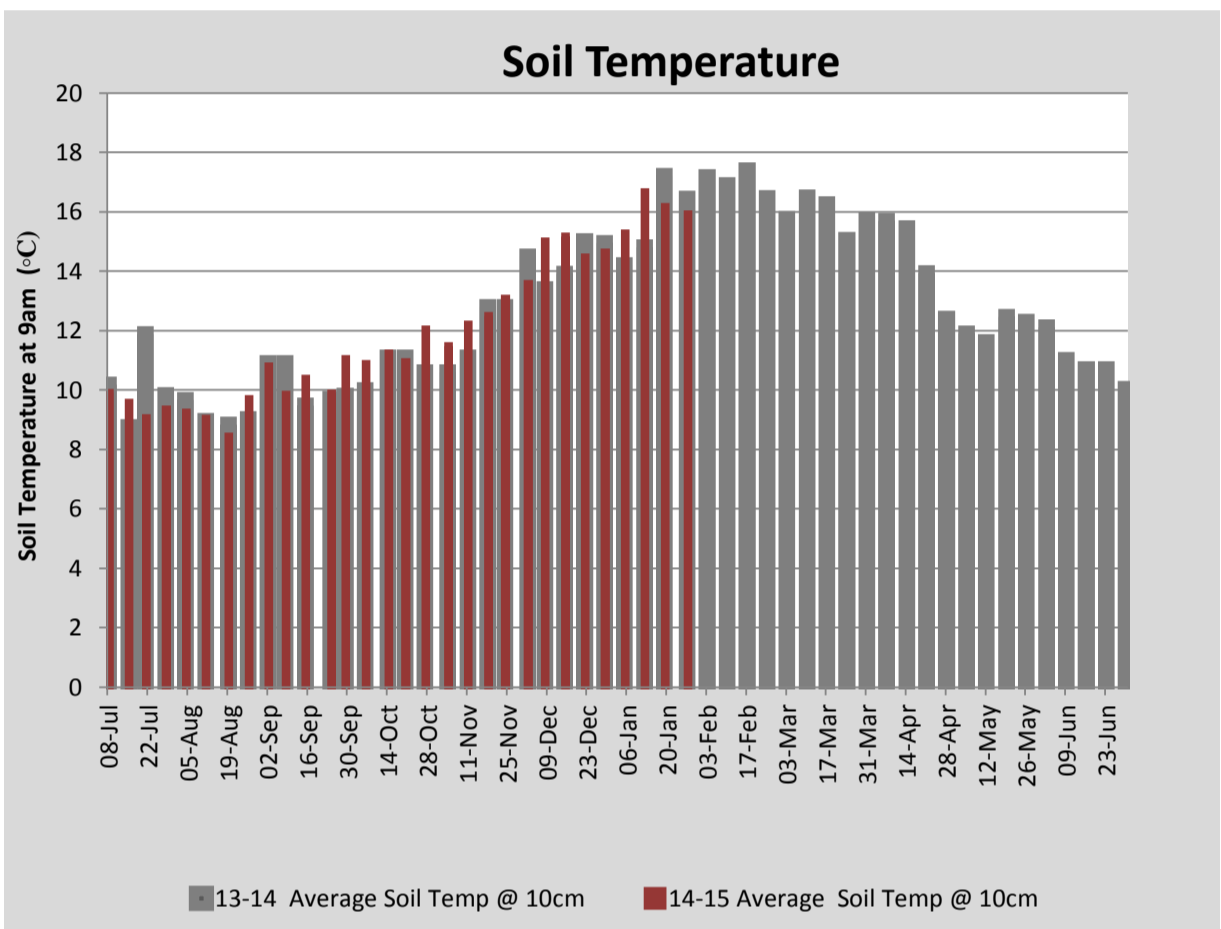
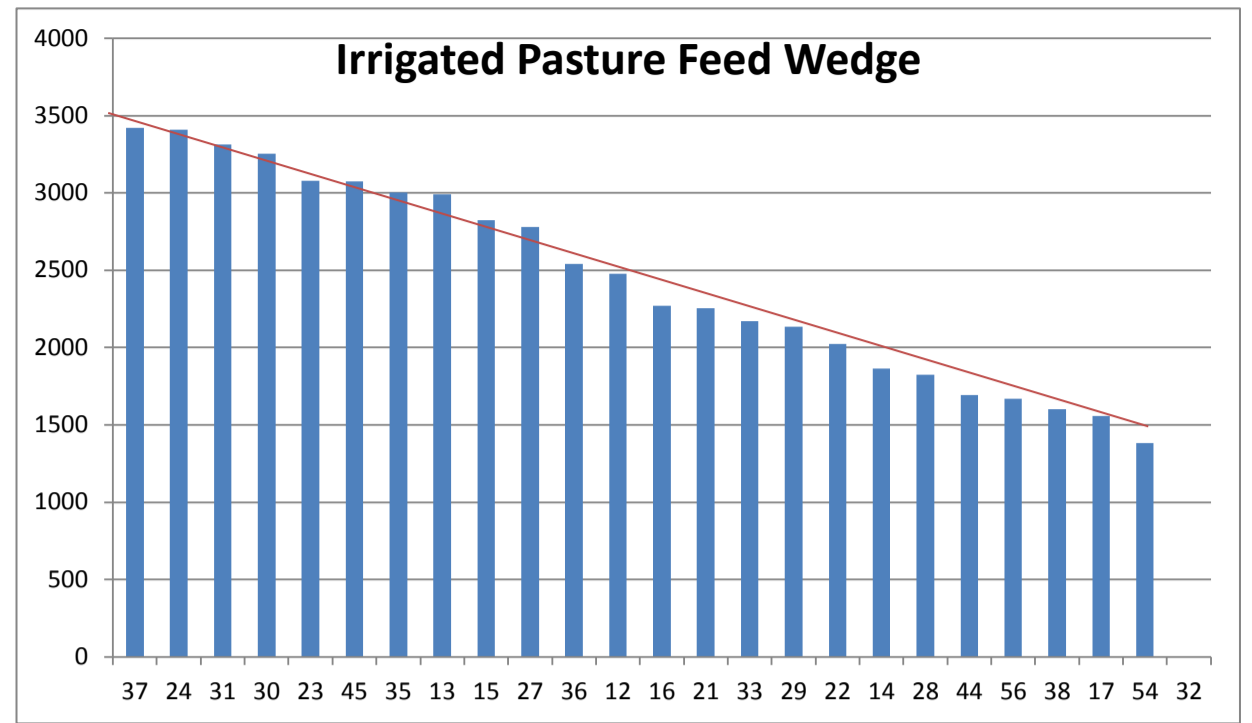
PASTURE INFORMATION	Farm			Irrigated			Rain-fed		
	Last Week	This Week	Variation	Last Week	This Week	Variation	Last Week	This Week	Variation
Grazed milking area (ha)	108.8	108.8	0.0	40.5	40.5	0.0	68.3	68.3	0
Rotation Length (days)	78	60	-17	37	29	-8	228	171	-57
Grazing allocation per day (ha)	1.4	1.8	0.4	1.1	1.4	0.3	0.3	0.4	0.1
Average time since last grazed (days)	51	54	3	28	33	5	64	66	2
Leaf appearance rate (days per leaf)	11	11	0	10	10	0	12	12	0
Average Pasture Cover (kgDM/ha)	2164	2107	-58	2538	2497	-41	1943	1876	-68
Pasture Growth Rate (kgDM/ha/day)	19	20	1	40	53	13	6	1	-6
Post Grazing Biomass (kgDM/ha)	1601	1510	-91						
Nitrogen applied YTD (kgN/ha)	122	122	0	0	0	0	0	0	0

*Please note all pasture calculations detailed above are based on the current Grazed Milking Area

MILK PRODUCTION	Last Week	This Week	Variation
Average No. cows in milk (vat)	357	356	-1
Litres per cow	18.7	18.5	-0.1
% Fat	4.50	4.52	0.02
% Protein	3.34	3.45	0.11
MS/cow/day	1.45	1.45	-0.00
MS/ha/day	4.59	4.57	-0.01
BMCC	152	133	
Average Liveweight (kg)	494	496	
	Budget	To Date	Variation
Total Milk Production (kgMS)	84,246	89,838	107%
MS/ha YTD	752	862	110



Last 7 days					
Milkers Diet	kg DM	MJ ME	CP (%)	NDF (%)	\$/cow
Pasture Intake	8.4	11.0	18.5	50.2	0.0
Concentrates	5.5	12.0	16.0	16.5	0.0
Silage	3.1	11.0	15.0	49.0	0.0
Grazed forage	0.0	0.0	0.0	0.0	0.0
Other feeds	0.0	0.0	0.0	0.0	0.0
Total	17	192.5	17.0	39.1	0
Target		191	16-18	>33	0



Analysis			
Expected growth rate next 7 days (kgDM/ha/day)	18	Target Leaf Grazing Stage	2.5-3.0
Total Demand from Pasture (kgDM/ha/day)	20	Predicted APC 7 days time	2091
APC balance (kgDM/ha/day)	-2	Predicted APC Change	-16.1

Discussion

Average pasture cover continued to decline this week with next to no growth occurring on the dryland portion of the milking platform. With the dry weather forecast to continue we will look to dry off/cull 60 cows over the coming three weeks, reducing the herd to a number that can be supported by the irrigated paddocks. Cows were pregnancy tested and condition scored this week. The 6 week in calf rate is 76%. Average condition score for the herd is 4.7. Grazing of the Pasja crop will commence this week. The estimated yield is 5.8t DM/ha. Cows will be allocated 2kgDM Pasja on exiting the dairy each morning before being sent to their day paddock. Per cow MS production stabilised this week at 1.45kgMS/cow/day helped by the increase in daily dry matter allocation to 17kgDM/cow/day. With feed on the runoff becoming limited we will (where possible) start using the R2 heifers to manage residuals behind the milking herd, particularly on the dryland paddocks.

27 January 2015

