

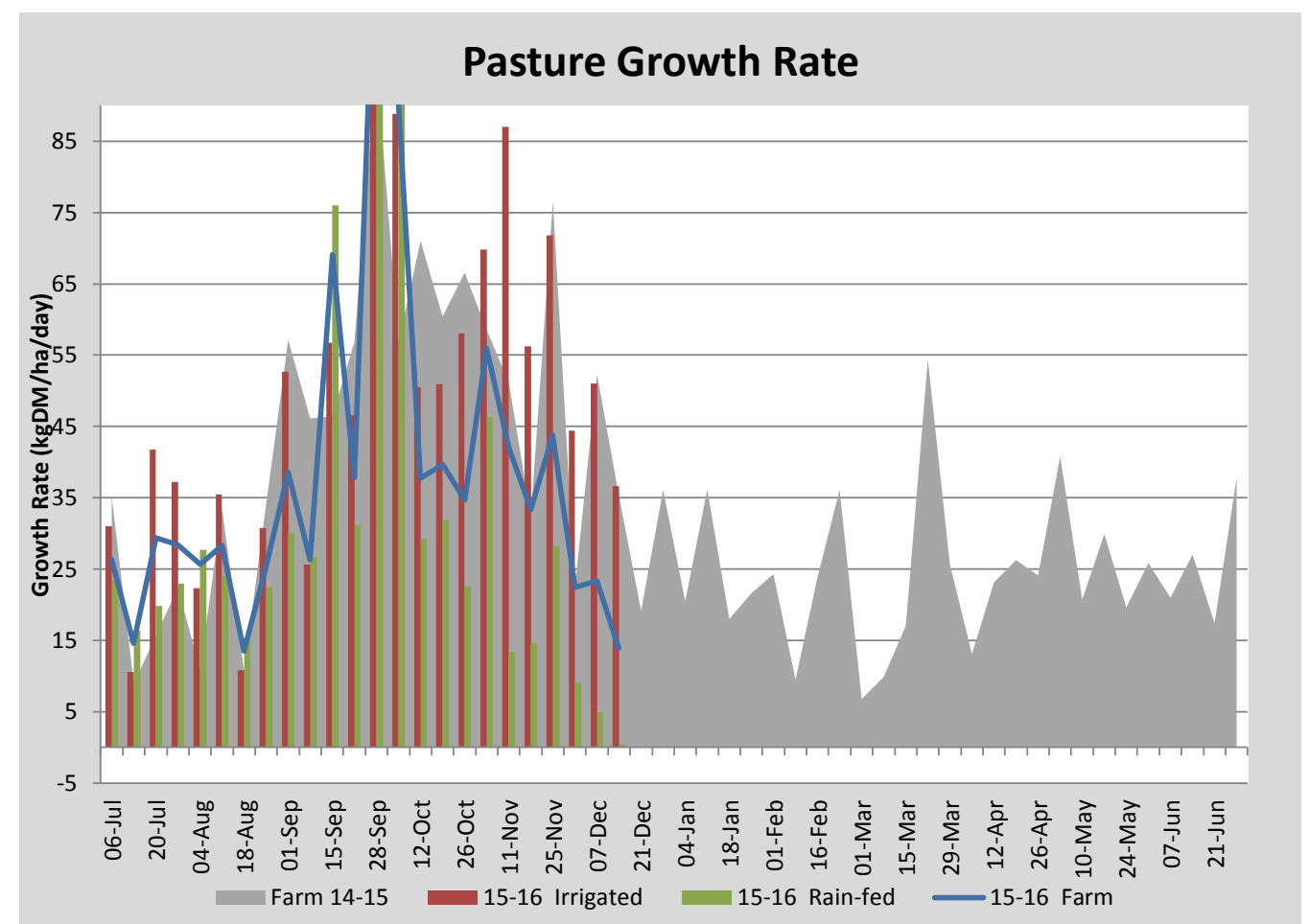
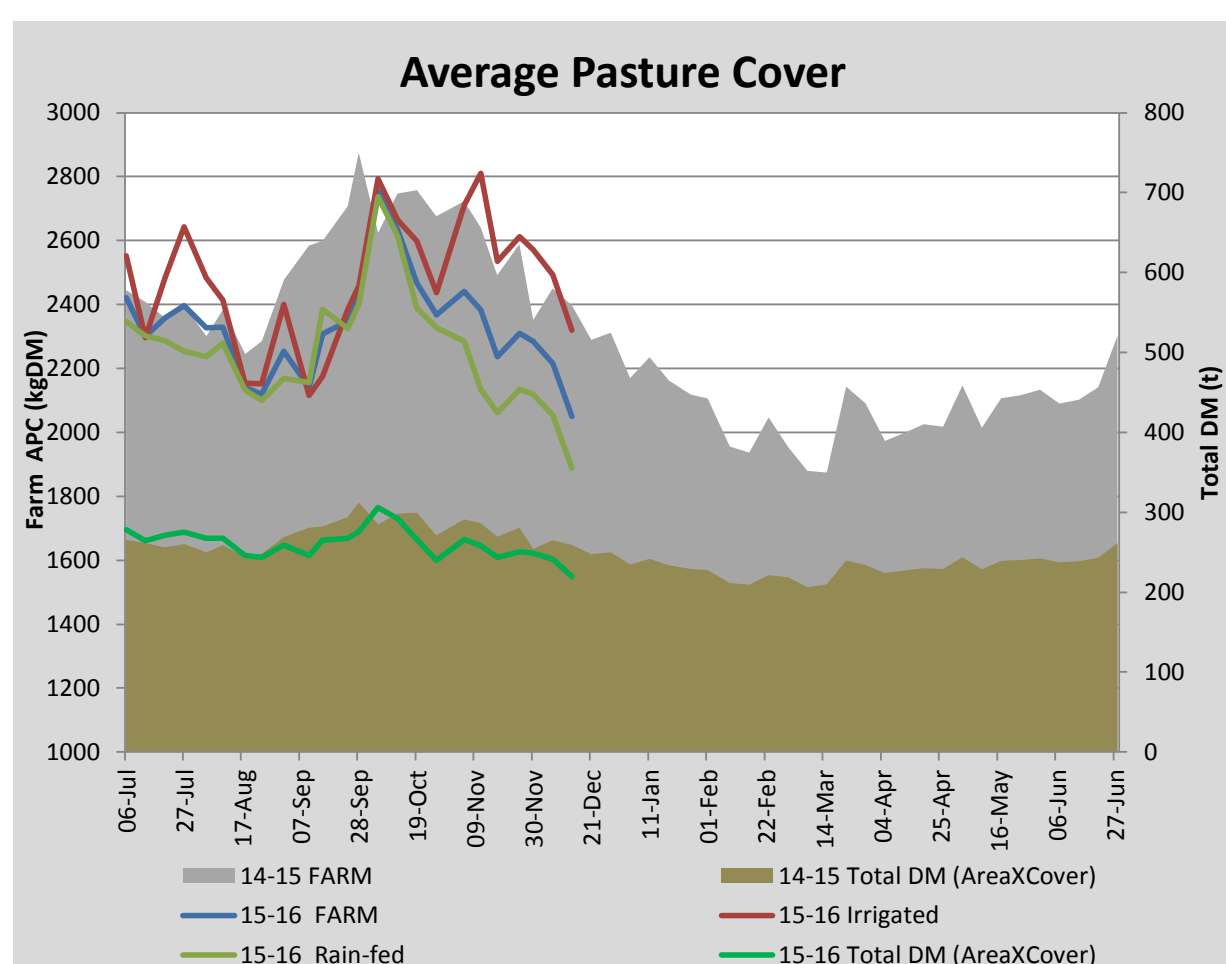
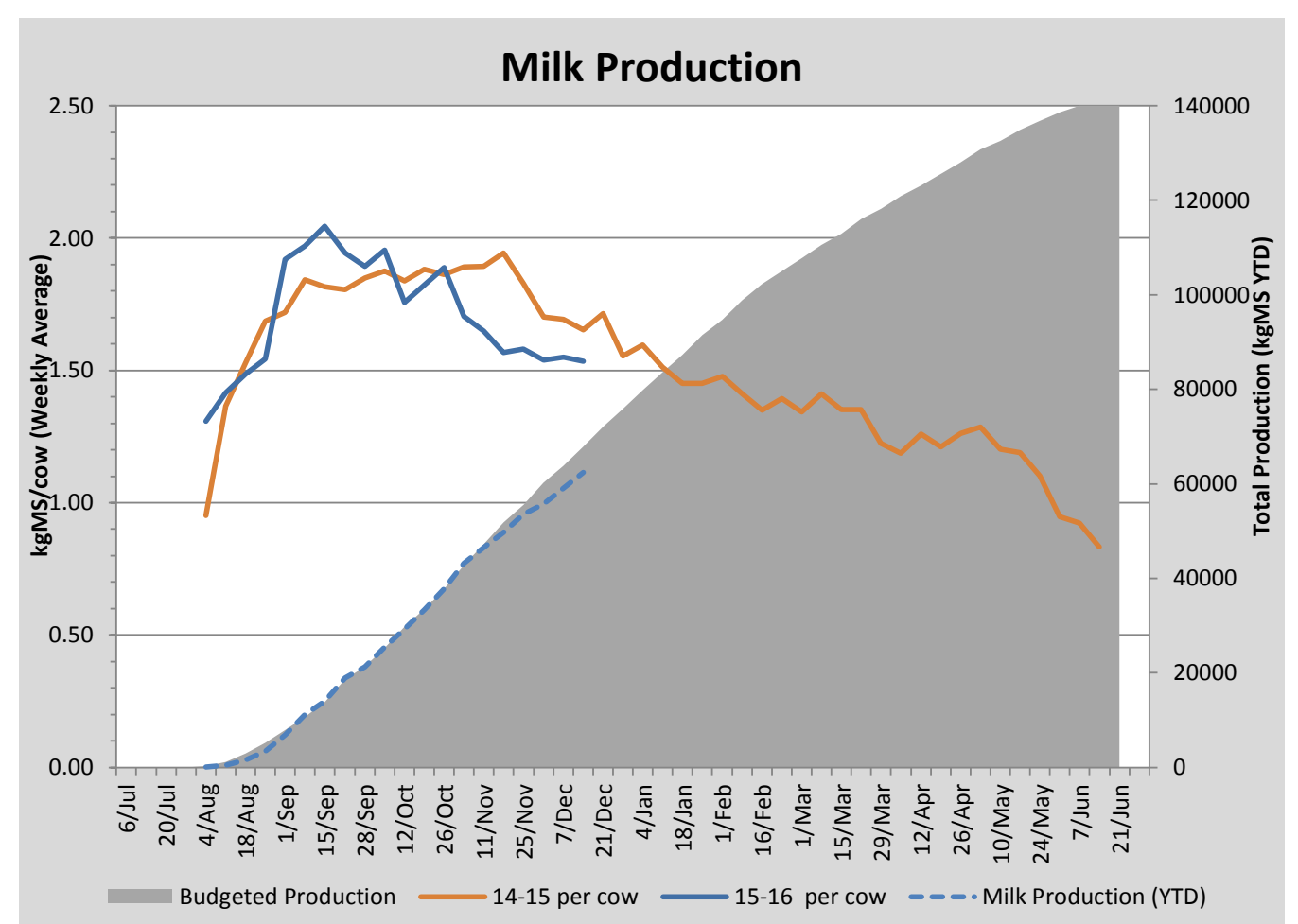
Key Summary Points

- 1 Dry hot windy conditions have almost stopped growth on dryland paddocks and slowed growth on the irrigated areas
- 2 Per cow production has declined slightly (litres) but MS production has held. Cow concentrate levels have been lifted to 7 kg/day for the next week and will be then be increased to 8 kg/day.
- 3 We have started grazing the Paja and forage rapes Titan and Goliath. Cows are receiving 1 kg DM/day

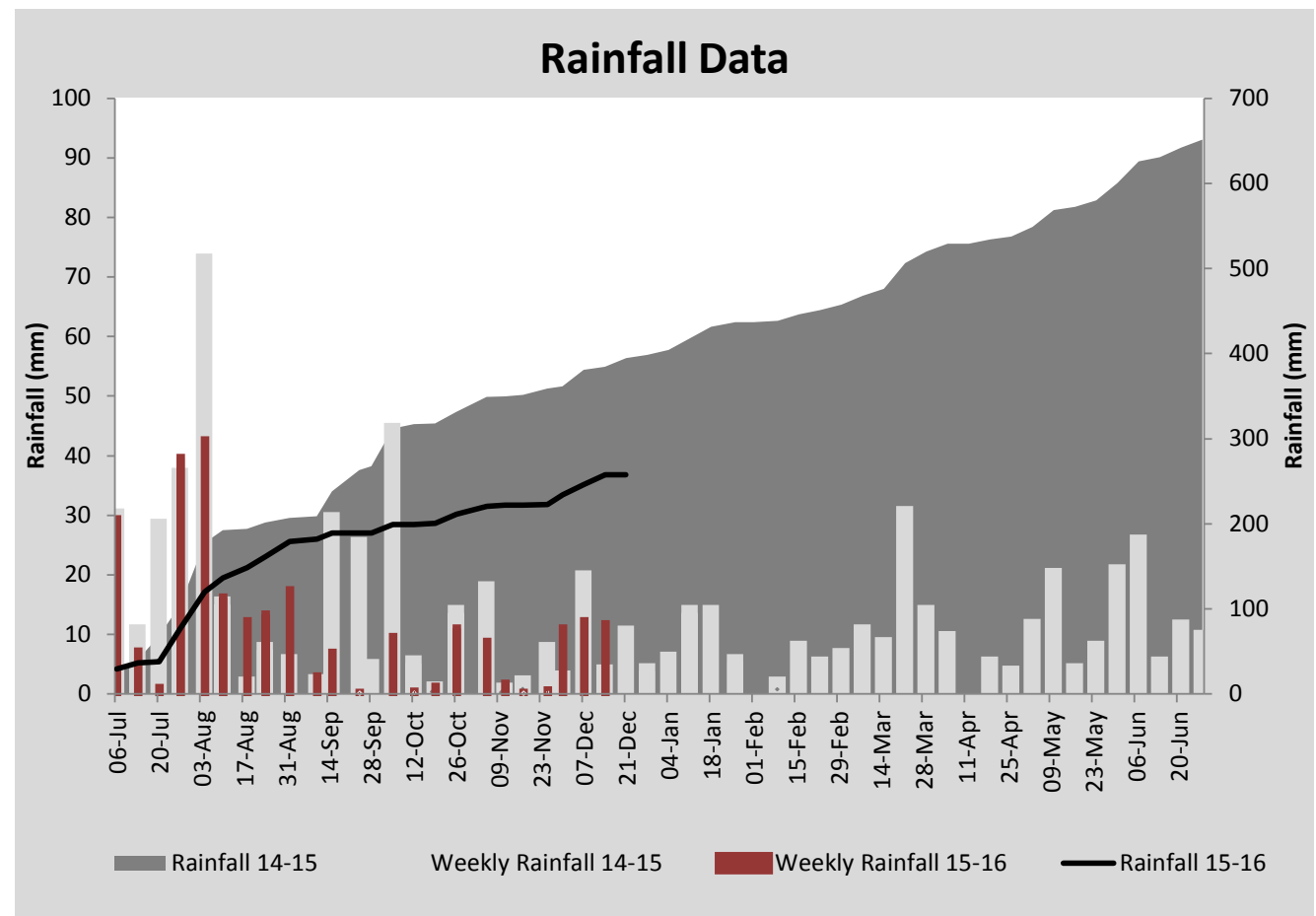
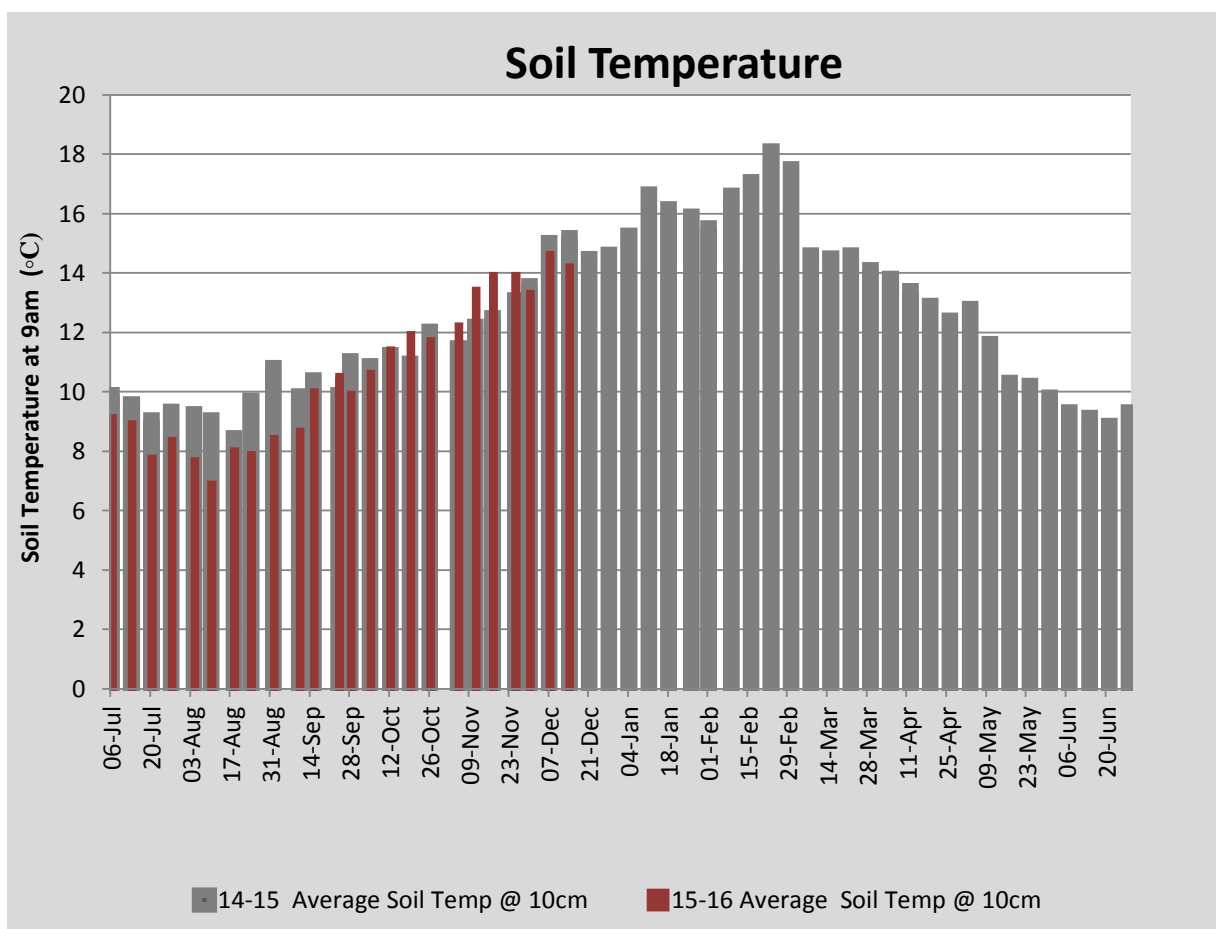
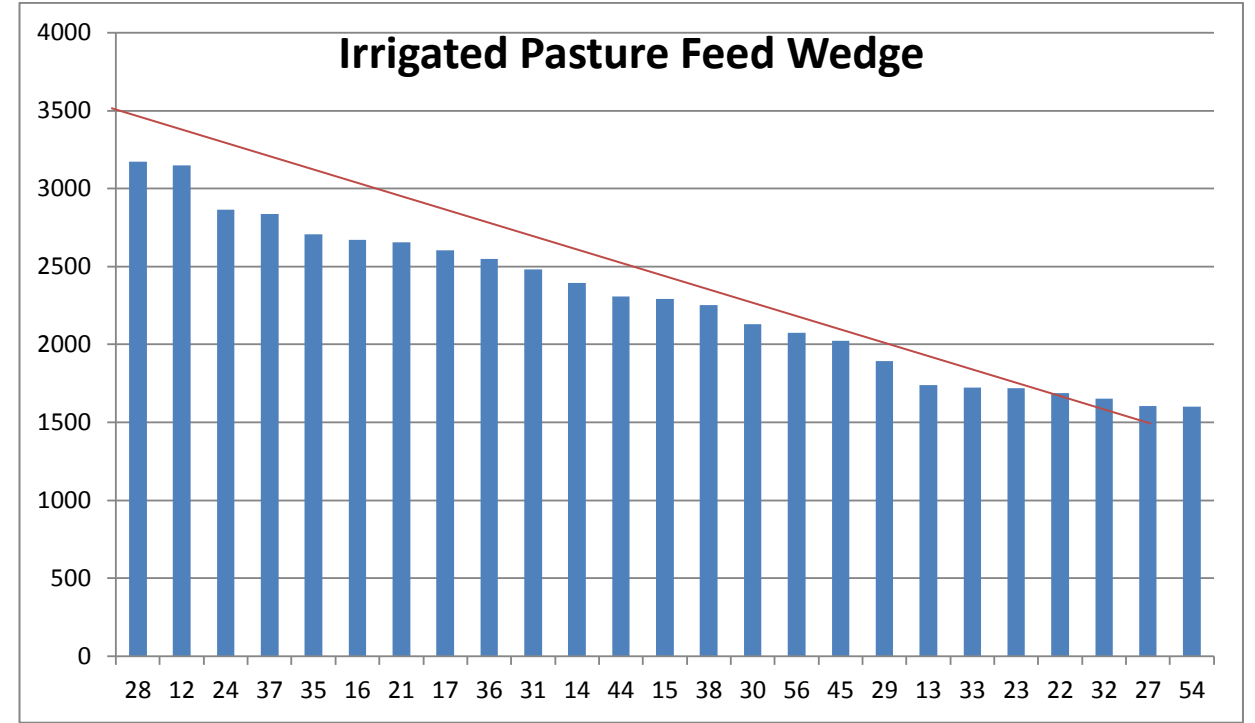
PASTURE INFORMATION	Farm			Irrigated			Rain-fed		
	Last Week	This Week	Variation	Last Week	This Week	Variation	Last Week	This Week	Variation
Grazed milking area (ha)	109.1	107.3	-1.8	42.2	40.1	-2.1	65.1	67.1	2
Rotation Length (days)	68	52	-16	45	34	-11	98	77	-21
Grazing allocation per day (ha)	1.6	2.1	0.5	0.9	1.2	0.3	0.7	0.9	0.2
Average time since last grazed (days)	56	60	3	35	38	3	69	73	4
Leaf appearance rate (days per leaf)	14	14	1	11	11	0	15	16	1
Average Pasture Cover (kgDM/ha)	2215	2049	-166	2492	2319	-174	2053	1888	-165
Pasture Growth Rate (kgDM/ha/day)	23	14	-9	51	37	-14	5	0	-5
Post Grazing Biomass (kgDM/ha)	1450	1490	40						
Nitrogen applied YTD (kgN/ha)	61	61	0	0	0	0	0	0	0

*Please note all pasture calculations detailed above are based on the current Grazed Milking Area

MILK PRODUCTION	Last Week	This Week	Variation
Average No. cows in milk (vat)	316	316	0
Litres per cow	20.3	19.7	-0.6
% Fat	4.27	4.38	0.11
% Protein	3.37	3.47	0.10
MS/cow/day	1.55	1.54	-0.01
MS/ha/day	4.34	4.29	-0.04
BMCC	180,667	164,857	-15,810
Average Liveweight (kg)	0	0	0
	Budget	To Date	Variation
Total Milk Production (kgMS)	67,856	62,431	92%
MS/ha YTD	595	595	0



Last 7 days					
Milkers Diet	kg DM	MJ ME	CP (%)	NDF (%)	\$/cow
Pasture Intake	9.5	0.0	0.0	0.0	0.0
Concentrates	6.0	12.5	16.0	16.5	0.0
Silage	2.1	0.0	0.0	0.0	0.0
Grazed forage	0.4	0.0	0.0	0.0	0.0
Other feeds	0.0	0.0	0.0	0.0	0.0
Total	18	75	5.3	5.5	0
Target		191	16-18	>33	0



Analysis			
Expected growth rate next 7 days (kgDM/ha/day)	17	Target Leaf Grazing Stage	2.5-3.0
Total Demand from Pasture (kgDM/ha/day)	20	Predicted APC 7 days time	2030
APC balance (kgDM/ha/day)	-3	Predicted APC Change	-18.6

Discussion

As pasture demand continues to exceed growth rates we are culling a further 13 cows and reducing the herd to 303 cows. With limited conserved fodder on hand and high market prices for silage we have opted to increase the grain feeding rate to 8kg/cow/day. We are starting to eat into our water storages with dam levels sitting at approximately 50%. We will start cutting back water to the centre pivot over the coming weeks and continue on with the fixed and K-line irrigation which can be sustained by a water bore. R1 heifers are currently grazing spring sown pasture. Young stock will be supplemented with canola meal (36% protein, 12MJ/kg ME) where required. R2 heifers are being used to tidy up any stinky residuals left behind the cows. The key focuses for the coming weeks are to extend the rotation lengths on both the platform and run-off and reduce demand on the milking platform by drying off low producers and reducing the milker's drymatter allocation to 17kgDM/cow/day.

14 December 2015

