

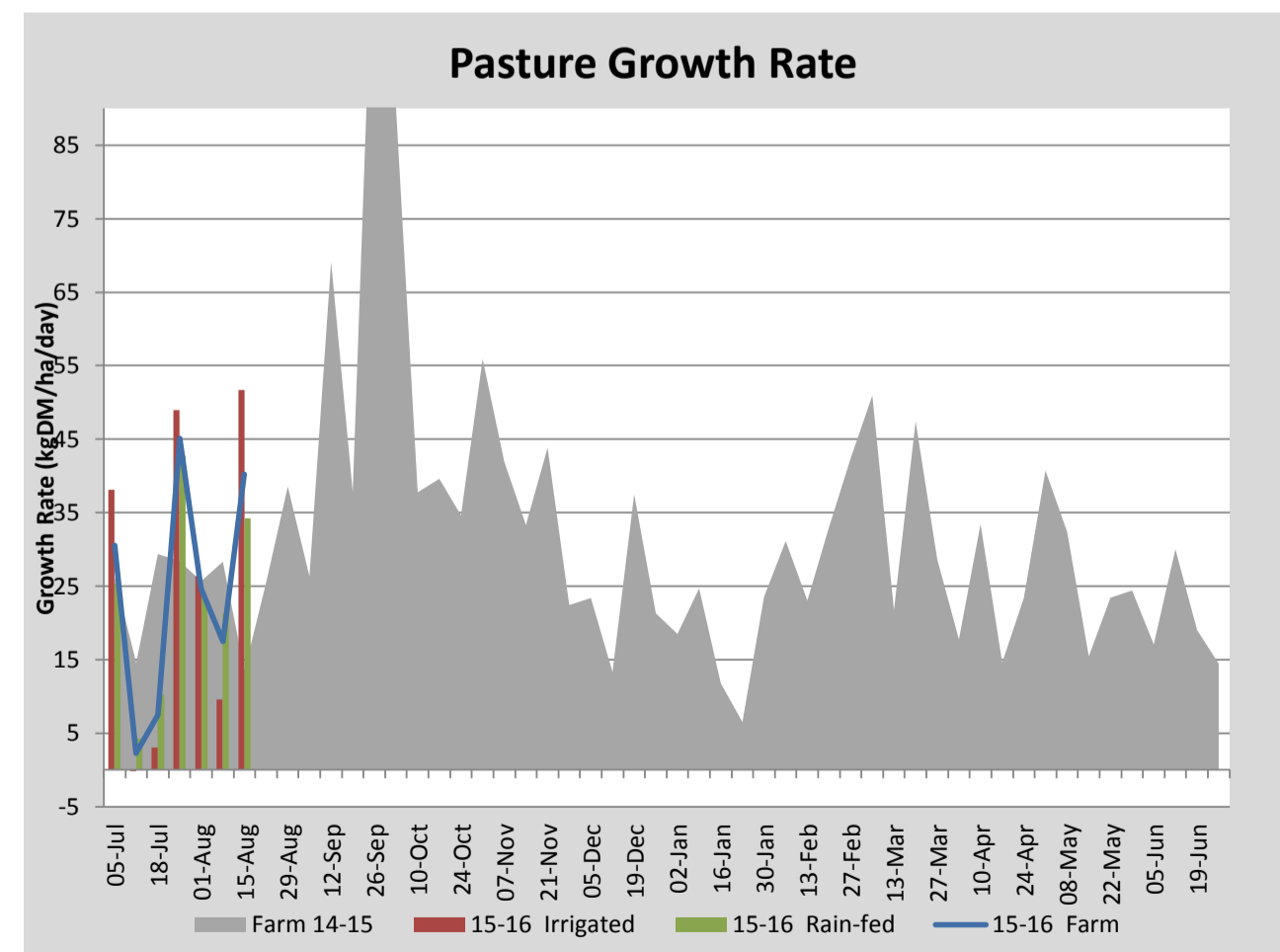
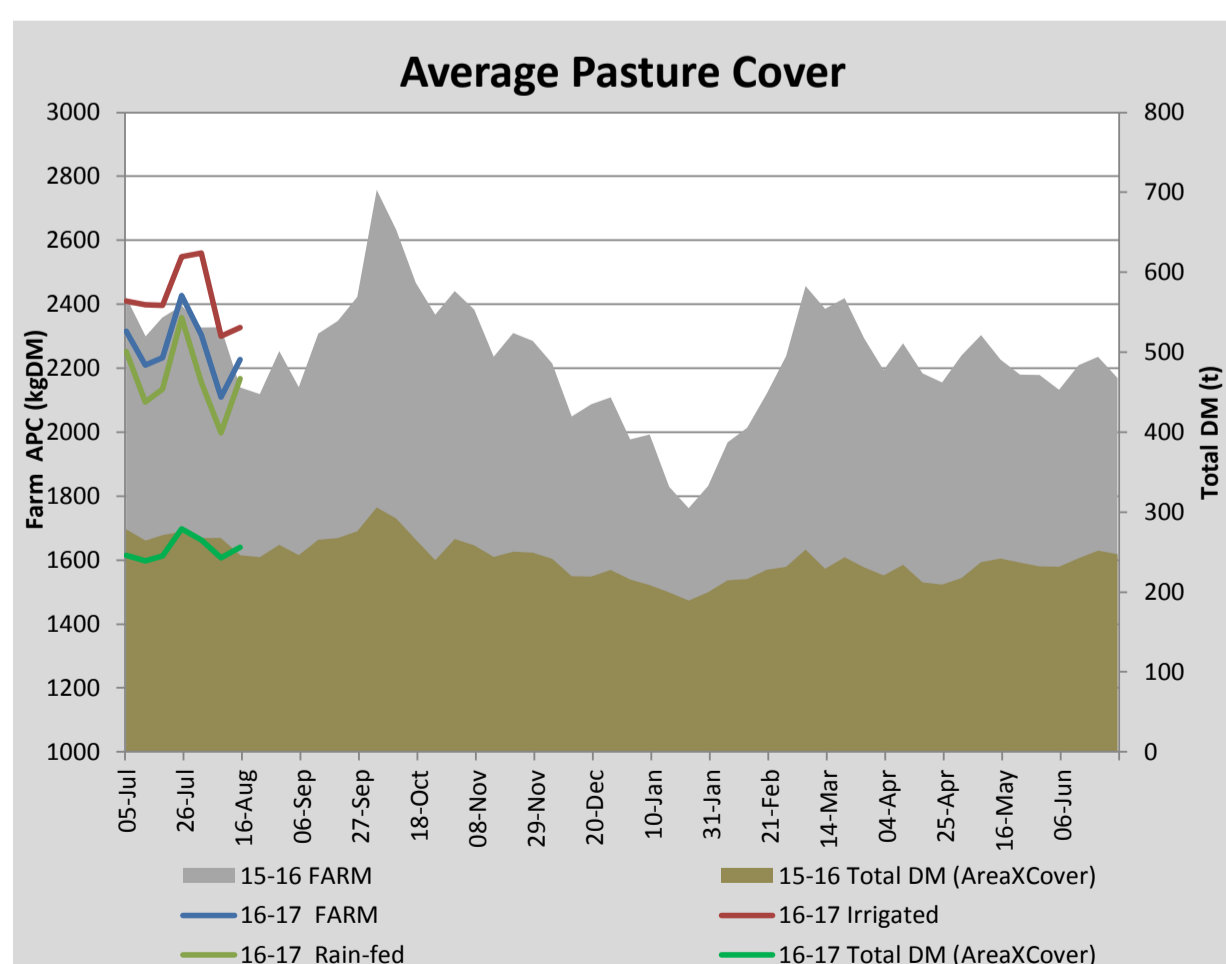
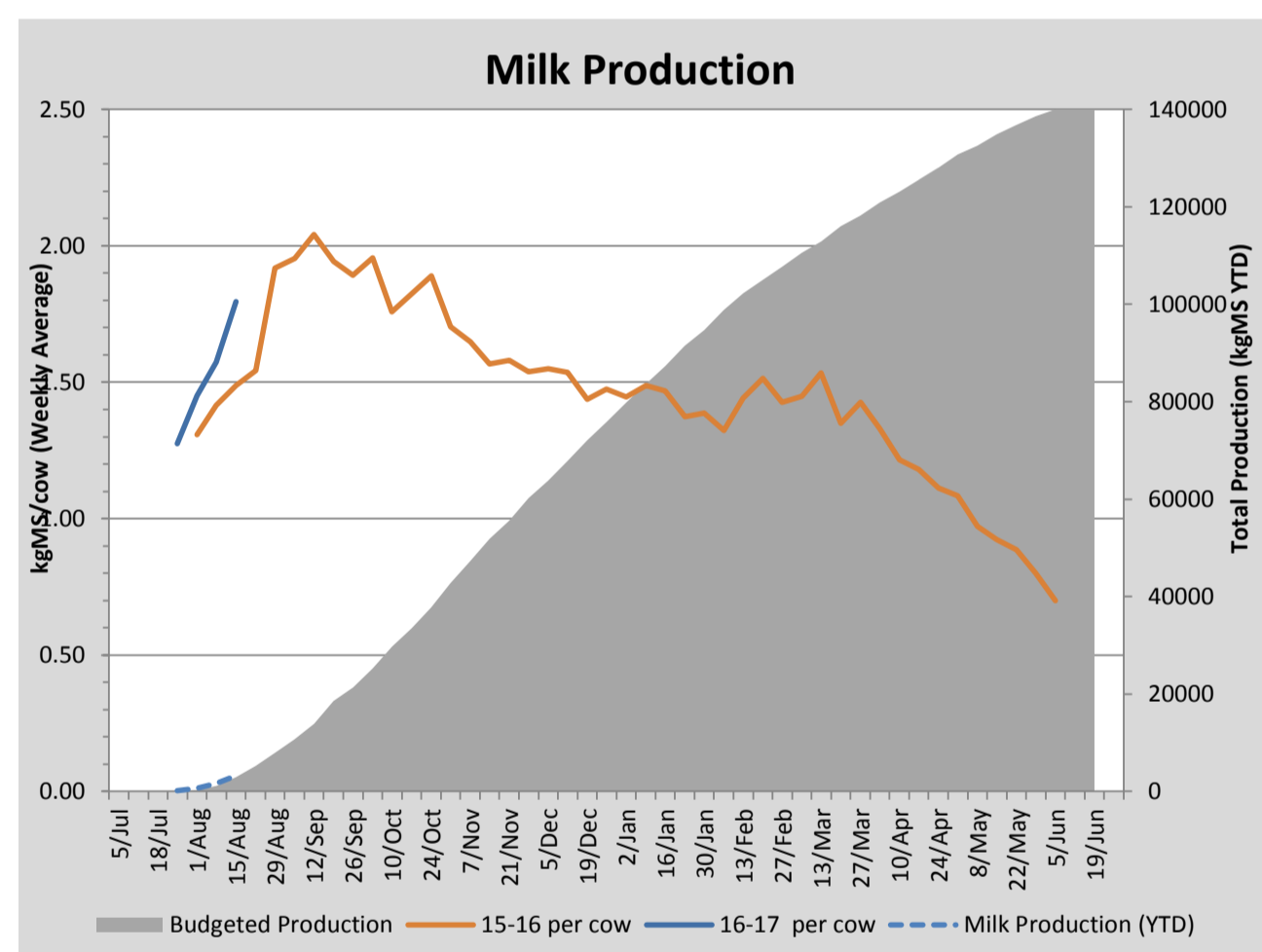
## Key Summary Points

- 1 Average pasture cover built this week to 2226 kgDM/ha with soil temperature increasing slightly to 8.75°C.
- 2 Calving is progressing well with 215 cows in to date. Incidence of mastitis has increased this week with the wet weather.
- 3 Focus for the coming week is to hold the grazing rotation at or above 60 days.

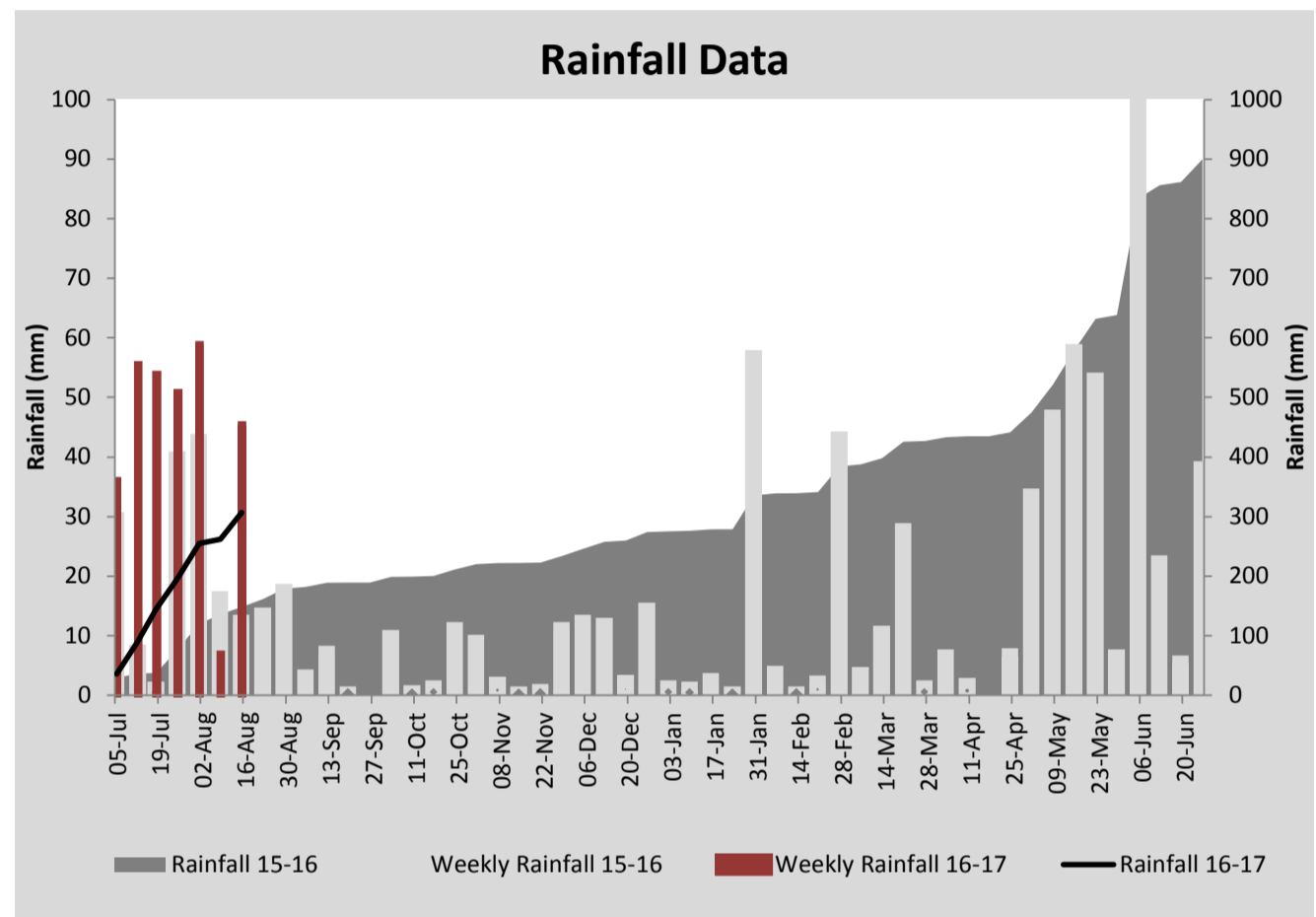
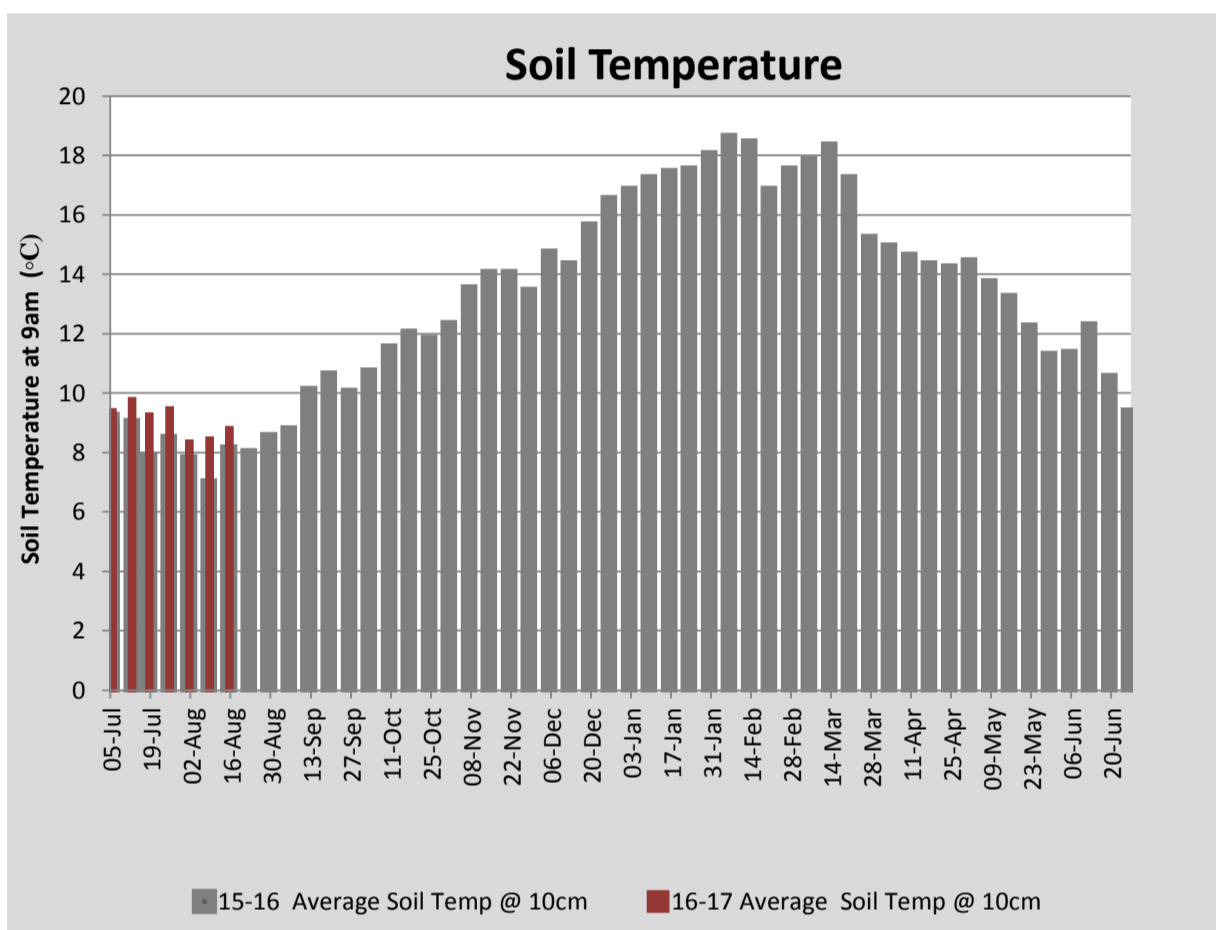
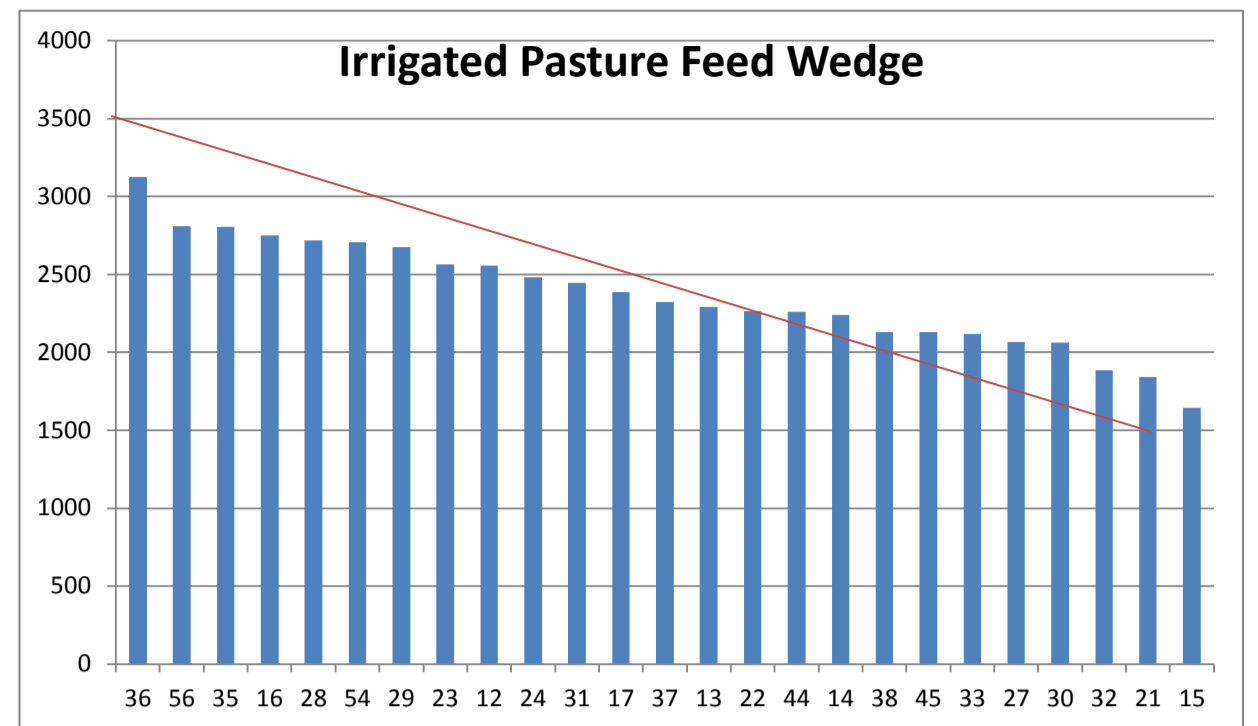
PASTURE INFORMATION	Farm			Irrigated			Rain-fed		
	Last Week	This Week	Variation	Last Week	This Week	Variation	Last Week	This Week	Variation
Grazed milking area (ha)	115.0	115.0	0.0	42.2	42.2	0.0	72.8	72.8	0
Rotation Length (days)	88	59	-29	84	31	-53	90	121	31
Grazing allocation per day (ha)	1.3	2.0	0.7	0.5	1.4	0.9	0.8	0.6	-0.2
Average time since last grazed (days)	76	89	13	77	72	-5	76	99	23
Leaf appearance rate (days per leaf)	20	20	0	20	20	0	20	20	0
Average Pasture Cover (kgDM/ha)	2109	2226	117	2300	2328	28	1998	2168	169
Pasture Growth Rate (kgDM/ha/day)	17	40	23	10	52	42	21	34	13
Post Grazing Biomass (kgDM/ha)	1515	1520	5						
Nitrogen applied YTD (kgN/ha)	21	21	0	24	0	-24	19	0	-19

\*Please note all pasture calculations detailed above are based on the current Grazed Milking Area

MILK PRODUCTION	Last Week	This Week	Variation
Average No. cows in milk (vat)	110	160	50
Litres per cow	19.4	22.6	3.2
% Fat	4.59	4.52	-0.07
% Protein	3.51	3.31	-0.20
MS/cow/day	1.57	1.80	0.22
MS/ha/day	1.53	2.54	1.01
BMCC	211,143	247,714	36,571
Average Liveweight (kg)	0	0	0
	Budget	To Date	Variation
Total Milk Production (kgMS)	2,931	3,245	111%
MS/ha YTD	26	36	141%



Last 7 days					
Milkers Diet	kg DM	MJ ME	CP (%)	NDF (%)	\$/cow
Pasture Intake	14.0	12.5	18.0	43.0	0.0
Concentrates	5.0	12.9	15.6	20.3	0.0
Silage	3.1	0.0	0.0	0.0	0.0
Grazed forage	0.0	0.0	0.0	0.0	0.0
Other feeds	0.0	0.0	0.0	0.0	0.0
<b>Total</b>	<b>22.1</b>	<b>239.5</b>	<b>14.9</b>	<b>31.8</b>	<b>0</b>
<b>Target</b>		<b>90</b>	<b>16-18</b>	<b>&gt;33</b>	<b>0</b>



Analysis			
Expected growth rate next 7 days (kgDM/ha/day)	25	Target Leaf Grazing Stage	2.5-3.0
Total Demand from Pasture (kgDM/ha/day)	31	Predicted APC 7 days time	2187
APC balance (kgDM/ha/day)	-6	Predicted APC Change	-39.2

## Discussion

Average pasture cover increased this week to 2226 kg DM/ha. This is most likely in response to recent nitrogen application and an increase in soil temperature. While cover is increasing, we will aim to maintain a grazing rotation at or greater than 60 days in the coming week. The preg testing results indicate that there will be an increase in the calving rate late next week. Holding the rotation and building or maintaining cover will help to manage the expected increase in demand. Springers are currently being fed 3 kg DM hay, 3 kgDM lead feed pellets and 6 kg DM pasture dusted with magnesium oxide.

# 15 August 2016

