

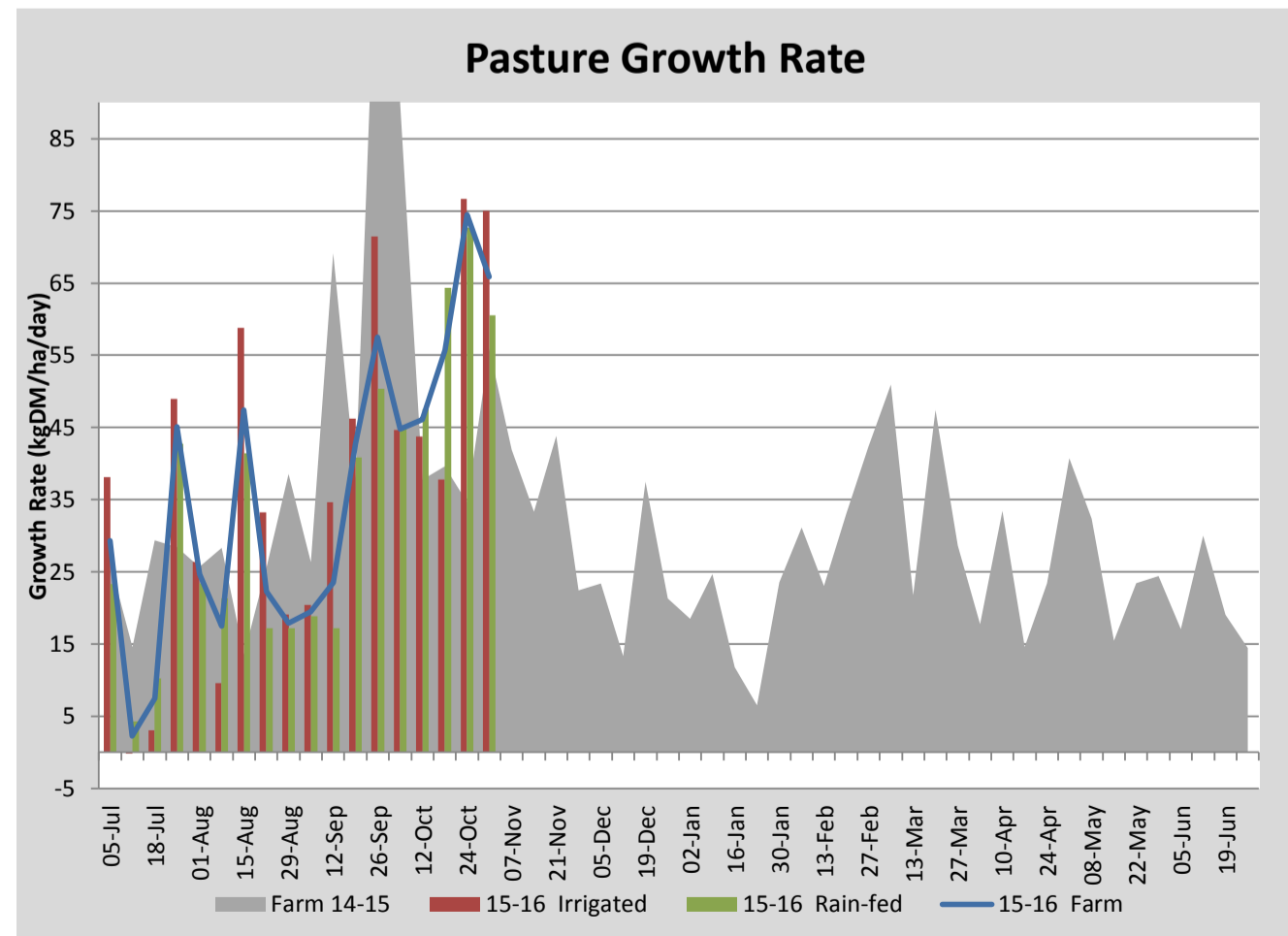
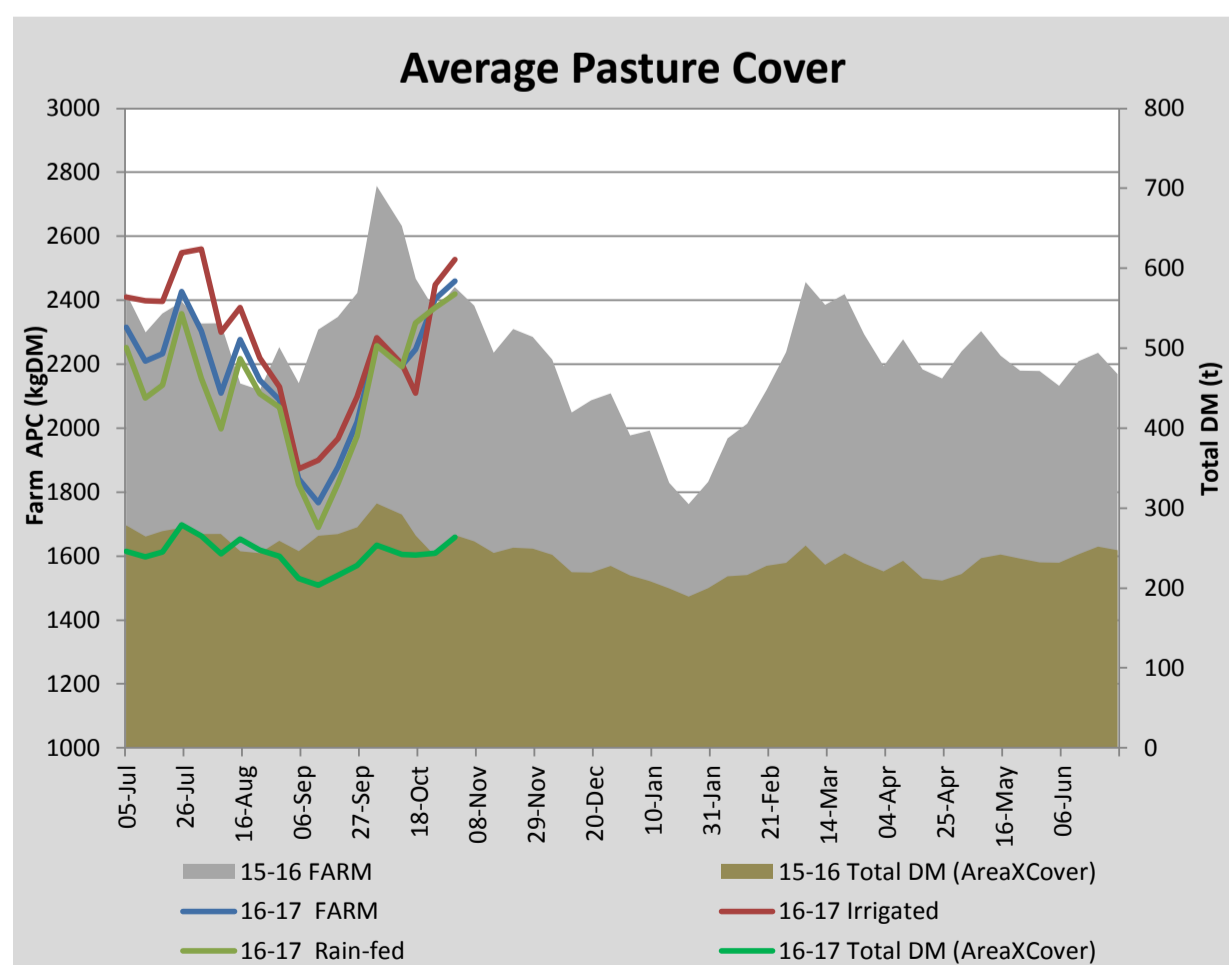
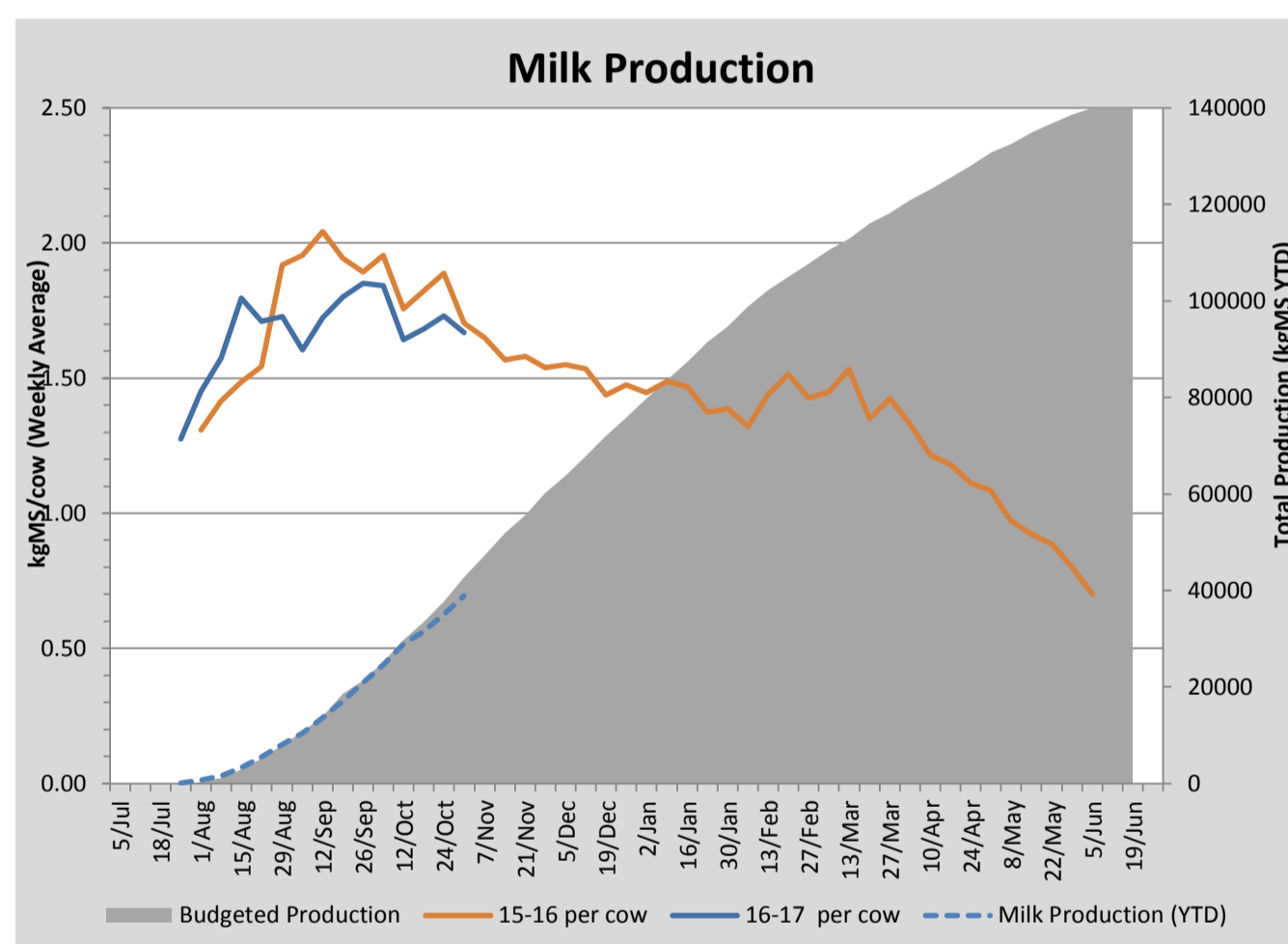
Key Summary Points

- 1 Average pasture cover increased this week to 2460kgDM/ha with growth rates averaging 66kgDM/ha/day across the milking platform.
- 2 Per cow milk solid production dropped back a little this week, possibly linked to cooler weather and reduced pasture quality with stem elongation starting to occur in some paddocks.
- 3 The focus for the coming week is to monitor pasture residuals and use steers to tidy up residuals where required.

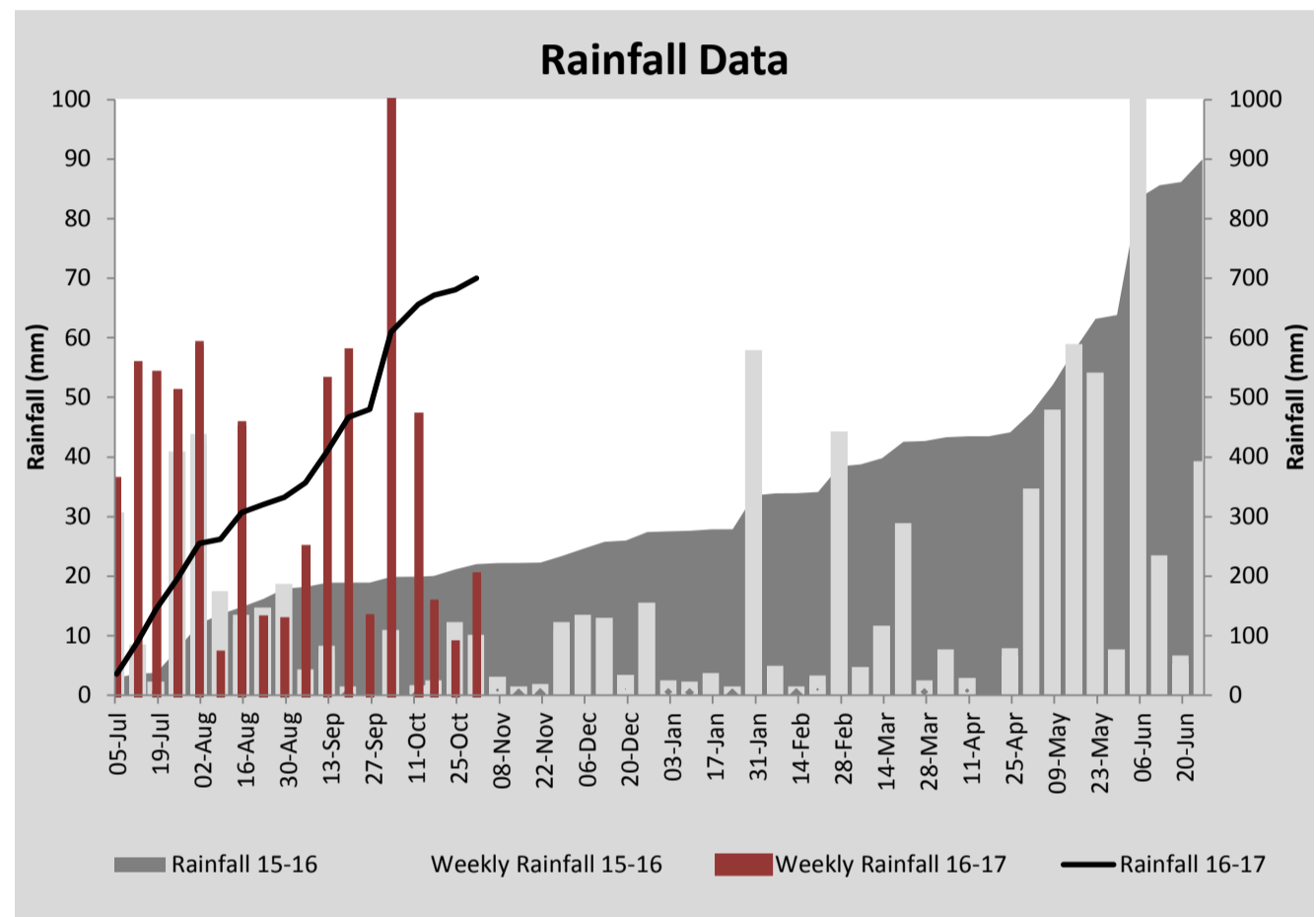
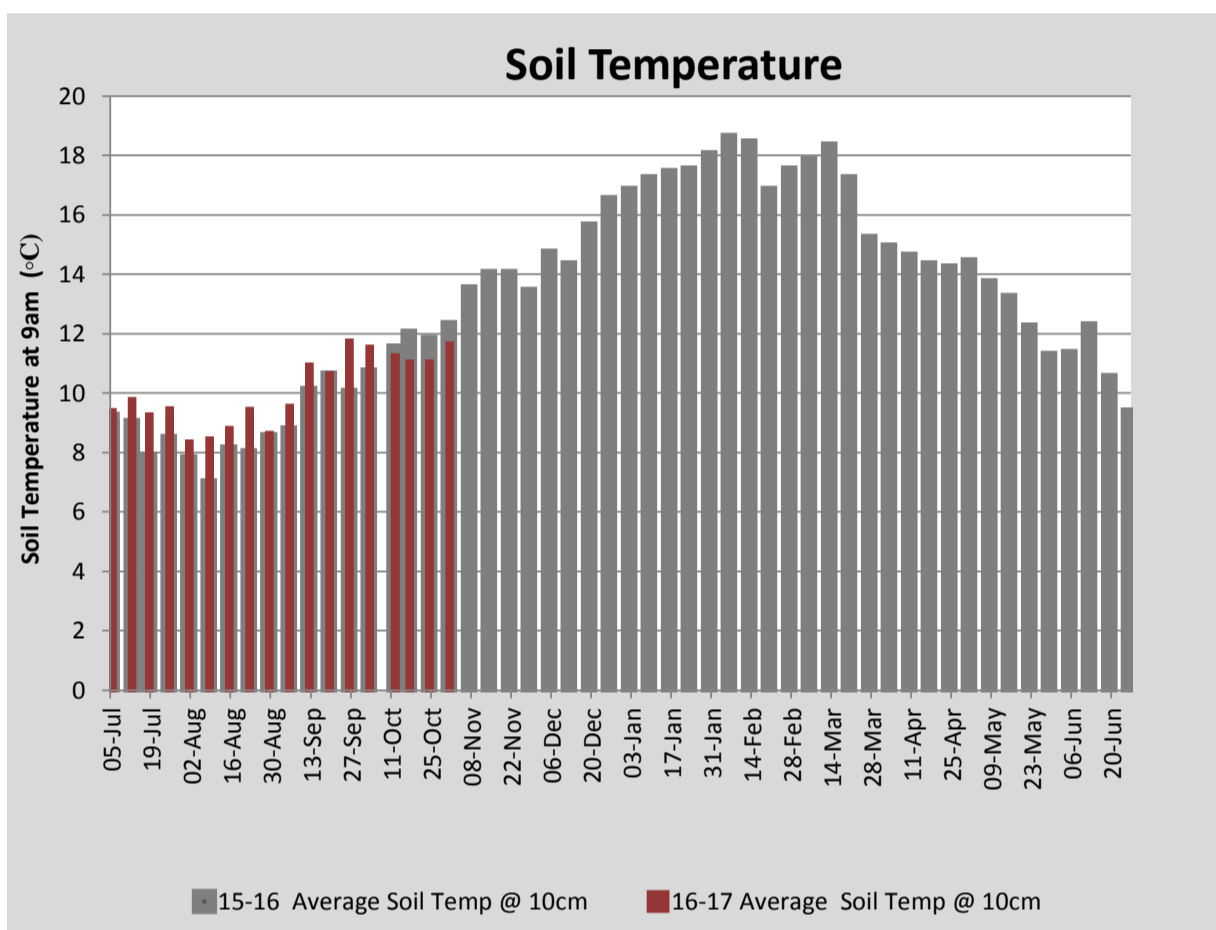
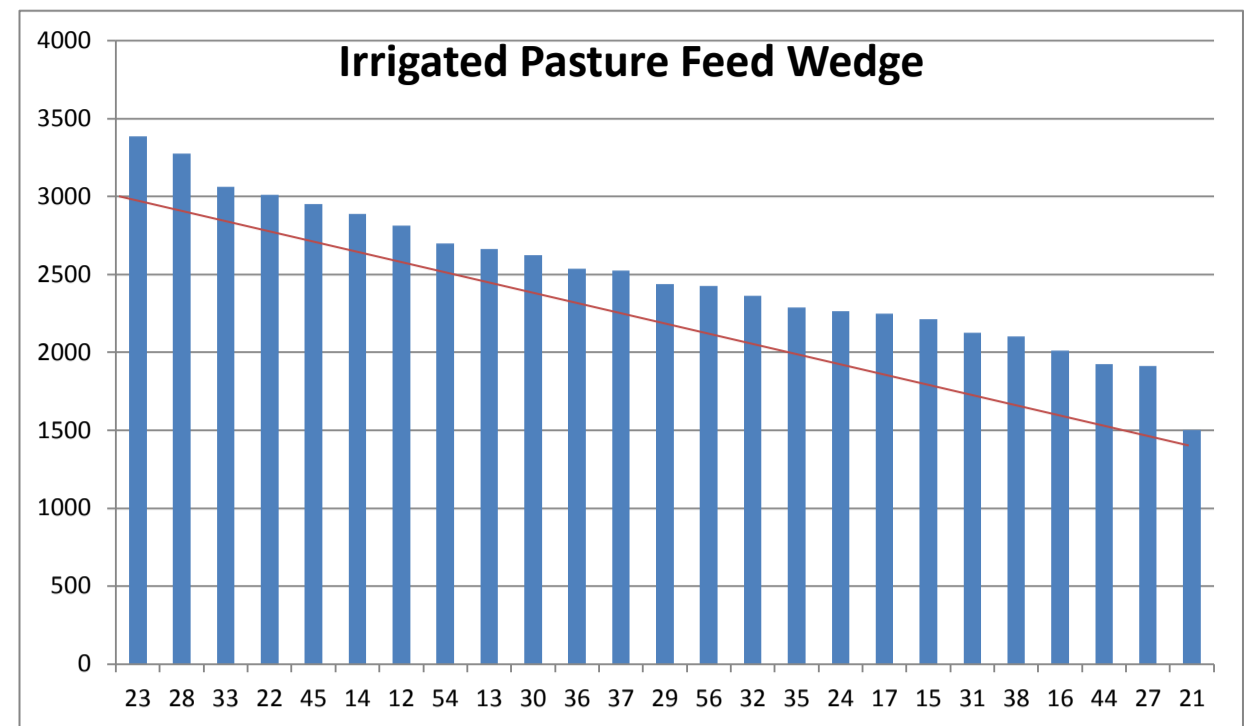
PASTURE INFORMATION	Farm			Irrigated			Rain-fed		
	Last Week	This Week	Variation	Last Week	This Week	Variation	Last Week	This Week	Variation
Grazed milking area (ha)	101.3	107.2	5.9	42.2	40.1	-2.1	65.1	67.1	2
Rotation Length (days)	38	34	-4	59	29	-30	30	37	7
Grazing allocation per day (ha)	2.7	3.2	0.5	0.7	1.4	0.7	2.0	1.8	-0.2
Average time since last grazed (days)	45	37	-8	39	36	-3	49	37	-12
Leaf appearance rate (days per leaf)	10	10	0	10	10	0	10	10	0
Average Pasture Cover (kgDM/ha)	2404	2460	57	2448	2528	80	2377	2420	43
Pasture Growth Rate (kgDM/ha/day)	74	66	-9	77	75	-2	73	61	-12
Post Grazing Biomass (kgDM/ha)	1550	1550	0						
Nitrogen applied YTD (kgN/ha)	79	79	0	6	0	-6	11	0	-11

*Please note all pasture calculations detailed above are based on the current Grazed Milking Area

MILK PRODUCTION	Last Week	This Week	Variation
Average No. cows in milk (vat)	352	354	2
Litres per cow	22.4	21.8	-0.6
% Fat	4.37	4.33	-0.04
% Protein	3.32	3.29	-0.03
MS/cow/day	1.73	1.67	-0.06
MS/ha/day	5.39	5.23	-0.16
BMCC	119,857	107,571	-12,286
Average Liveweight (kg)	456	462	6
	Budget	To Date	Variation
Total Milk Production (kgMS)	42,795	38,848	91%
MS/ha YTD	375	396	106%



Last 7 days					
Milkers Diet	kg DM	MJ ME	CP (%)	NDF (%)	\$/cow
Pasture Intake	17.0	12.5	19.0	48.0	0.0
Concentrates	2.0	12.9	45.6	20.3	0.0
Silage	0.0	0.0	0.0	0.0	0.0
Grazed forage	0.0	0.0	0.0	0.0	0.0
Other feeds	0.0	0.0	0.0	0.0	0.0
Total	19	238.3	21.8	45.1	0
Target		90	16-18	>33	0



Analysis			
Expected growth rate next 7 days (kgDM/ha/day)	65	Target Leaf Grazing Stage	2.5-3.0
Total Demand from Pasture (kgDM/ha/day)	55	Predicted APC 7 days time	2531
APC balance (kgDM/ha/day)	10	Predicted APC Change	70.7

Discussion

Average pasture cover increased to 2460kgDM/ha this week with pasture growth rates averaging 66kgDM/ha/day across the milking platform. Stem elongation is starting to occur in some paddocks with a more stalky residual being visible post grazing. The 39 steers and R2 heifers are being used to tidy up residuals where required. 20 ha of the runoff was cut for silage this week yielding approximately 2t DM/ha. Per cow milk solid production dropped a little this week to 1.67kgMS/cow/day, possibly affected by the cooler weather and decreasing pasture quality. We have experienced an increase in lameness over the past week so we will be putting out the hoofmats with copper sulphate added. Turnip crops have germinated and are growing well. We will be monitoring for signs of slug and insect pressure over the coming weeks. We are seeing some pinkeye infections in the weaned calves at present with 12 calves currently isolated and on treatment.

31 October 2016

