

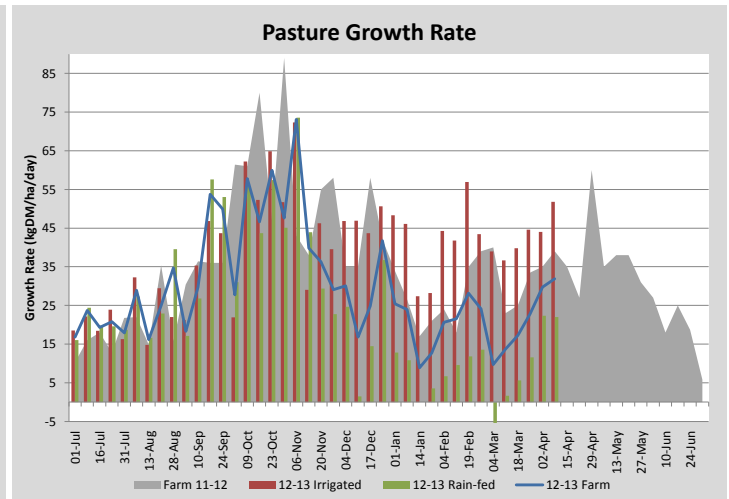
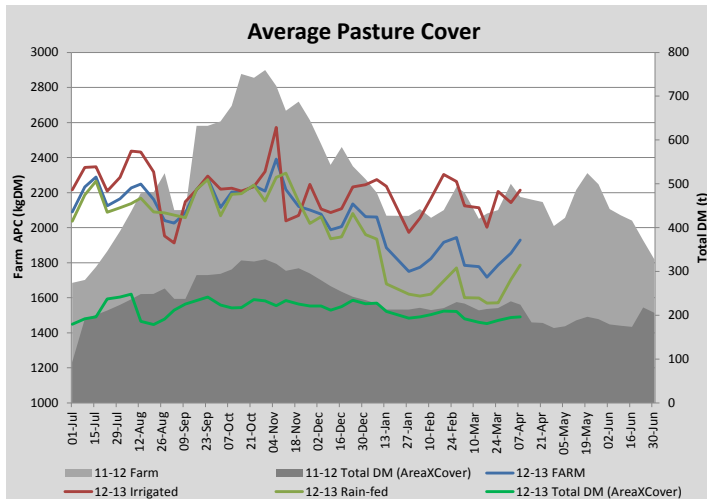
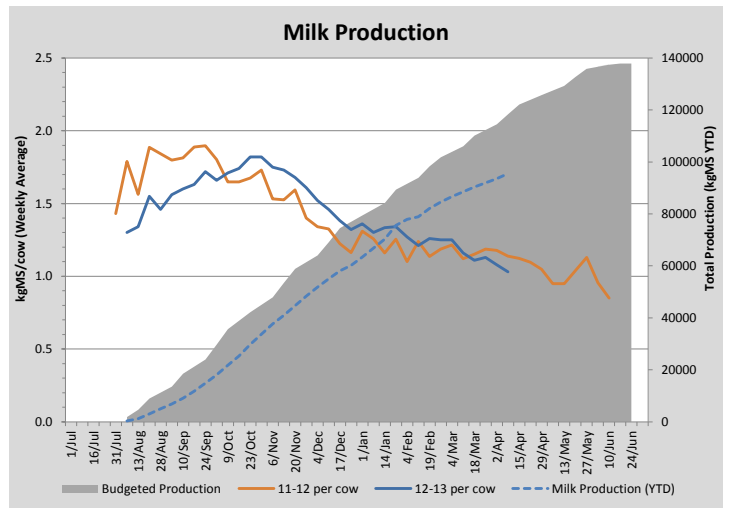
## Key Summary Points

- 1** Capital/maintenance autumn fertiliser has gone on this week
- 2** We are about to dry off a further 45 cows to reduce feed demand and allow us to milk through May with the remaining cows (research trial being conducted)
- 3** We ran irrigation during the week to keep soil moisture at optimum levels

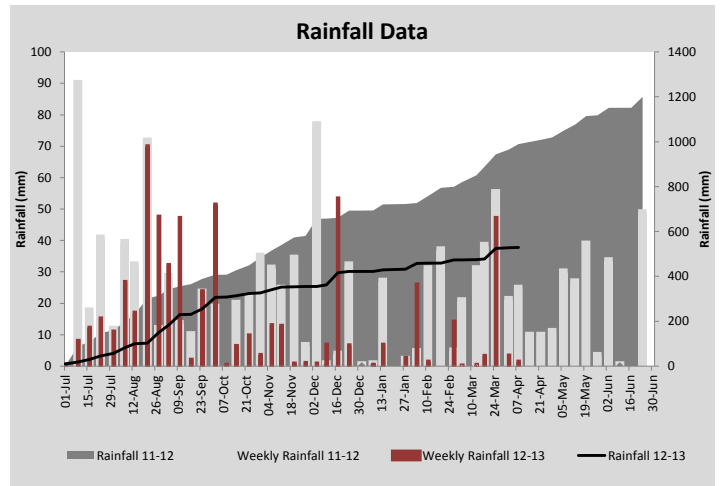
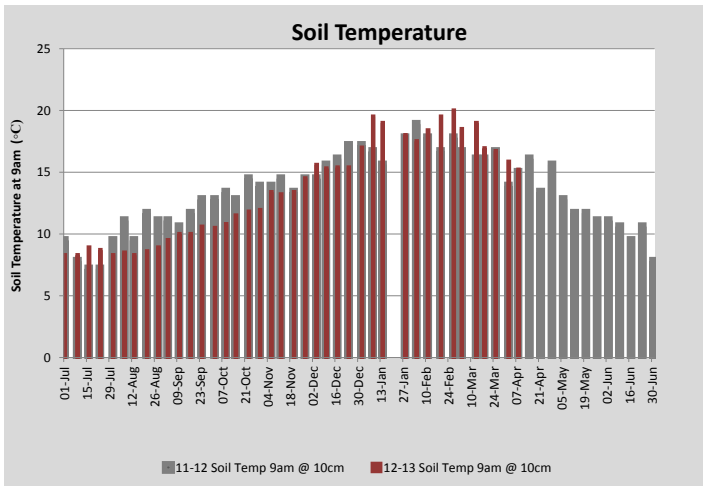
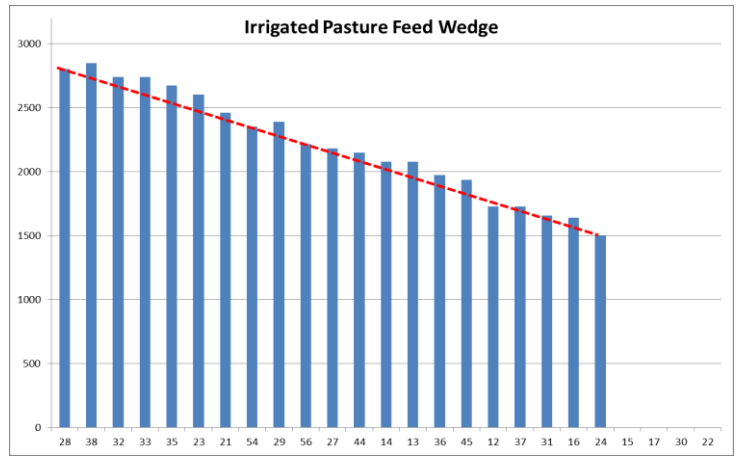
PASTURE INFORMATION	Farm			Irrigated			Rain-fed		
	Last Week	This Week	Variation	Last Week	This Week	Variation	Last Week	This Week	Variation
Grazed milking area (ha)	105.2	101.6	3.6	35.7	33.6	2.07	69.5	68.0	1.51
Rotation Length (days)	46	42		27	24		69	68	
Grazing allocation per day (ha)	2.3	2.4	0.10	1.3	1.4	0.10	1.0	1.0	0.00
Average time since last grazed (days)	46	53	7	28	28	0	55	65	10
Leaf appearance rate (days per leaf)	11	11	0	11	11	0	11	11	0
Average Pasture Cover (kgDM/ha)	1854	1928	75	2143	2214	71	1705	1787	82
Pasture Growth Rate (kgDM/ha/day)	30	32	2	44	52	8	22	22	-0
Post Grazing Biomass (kgDM/ha)	1450	1400	50						
Nitrogen applied YTD (kgN/ha)	217	250	33	0	22	22	0	11	11

\*Please note all pasture calculations detailed above are based on the current Grazed Milking Area

MILK PRODUCTION	Last Week	This Week	Variation
No cows in milk (vat)	223	223	0.00
Litres per cow	13.4	12.5	0.89
% Fat	4.71	4.80	0.09
% Protein	3.37	3.40	0.03
MS/cow/day	1.08	1.03	0.05
MS/ha/day	1.73	1.72	0.01
BMCC	178	171	7.00
Average Liveweight (kg)			
	Budget	To Date	Variation
Total Milk Production (kgMS)	118356	95467	81%
MS/ha YTD	1057	852	-204



Last 7 days					
Milkers Diet	kg DM	ME	CP	NDF	\$/cow
Pasture Intake	9.0	11.0	0.0	0.0	0.0
Concentrates	5.0	11.0	0.0	0.0	0.0
Silage	3.0	8.5	0.0	0.0	0.0
Grazed forage	0.0	0.0	0.0	0.0	0.0
Other feeds	0.0	0.0	0.0	0.0	0.0
<b>Total</b>	<b>17</b>	<b>179.5</b>	<b>0</b>	<b>0</b>	<b>0</b>
<b>Target</b>	<b>17</b>		<b>0</b>	<b>0</b>	<b>0</b>



Analysis			
Expected growth rate next 7 days (kgDM/ha/day)	30	Target Leaf Grazing Stage	3.0
Total Demand from Pasture (kgDM/ha/day)	23	Predicted APC 7 days time	1975
APC balance (kgDM/ha/day)	7	Predicted APC Change	46.8

## Discussion

We are slowly building average cover but with silage reserves close to running out we have decided to dry off a further 45 cows to reduce current feed demand and make the most of the short autumn growing period to build average cover. We plan to milk the bulk of the remaining cows through most of May (partly to allow a planned research trial). Dry cows are being managed in two mobs based on condition score. R2 & R1 have recently been weighed. Weights are behind this time last year (primarily due to the season) but average weight remains on track with targets (R2 currently average 411kg, R1 average 172kg). However, there is a tail end on both groups which we will try and preferentially feed over the coming months to help rectify. Milk production is currently 4% up on last year at this time but with milking numbers being reduced we are likely to finish on par with last year for the season.

# 8 April 2013

