

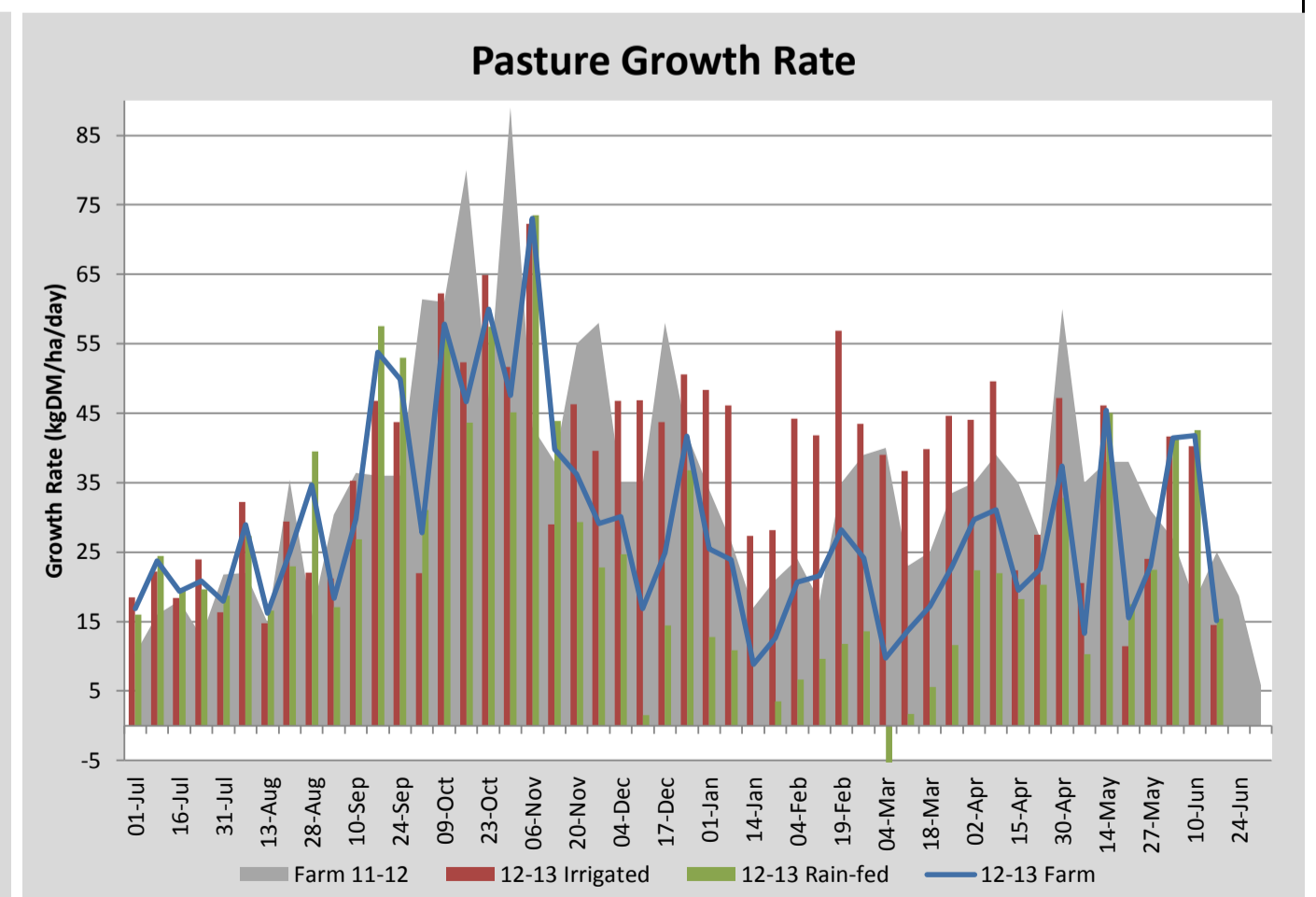
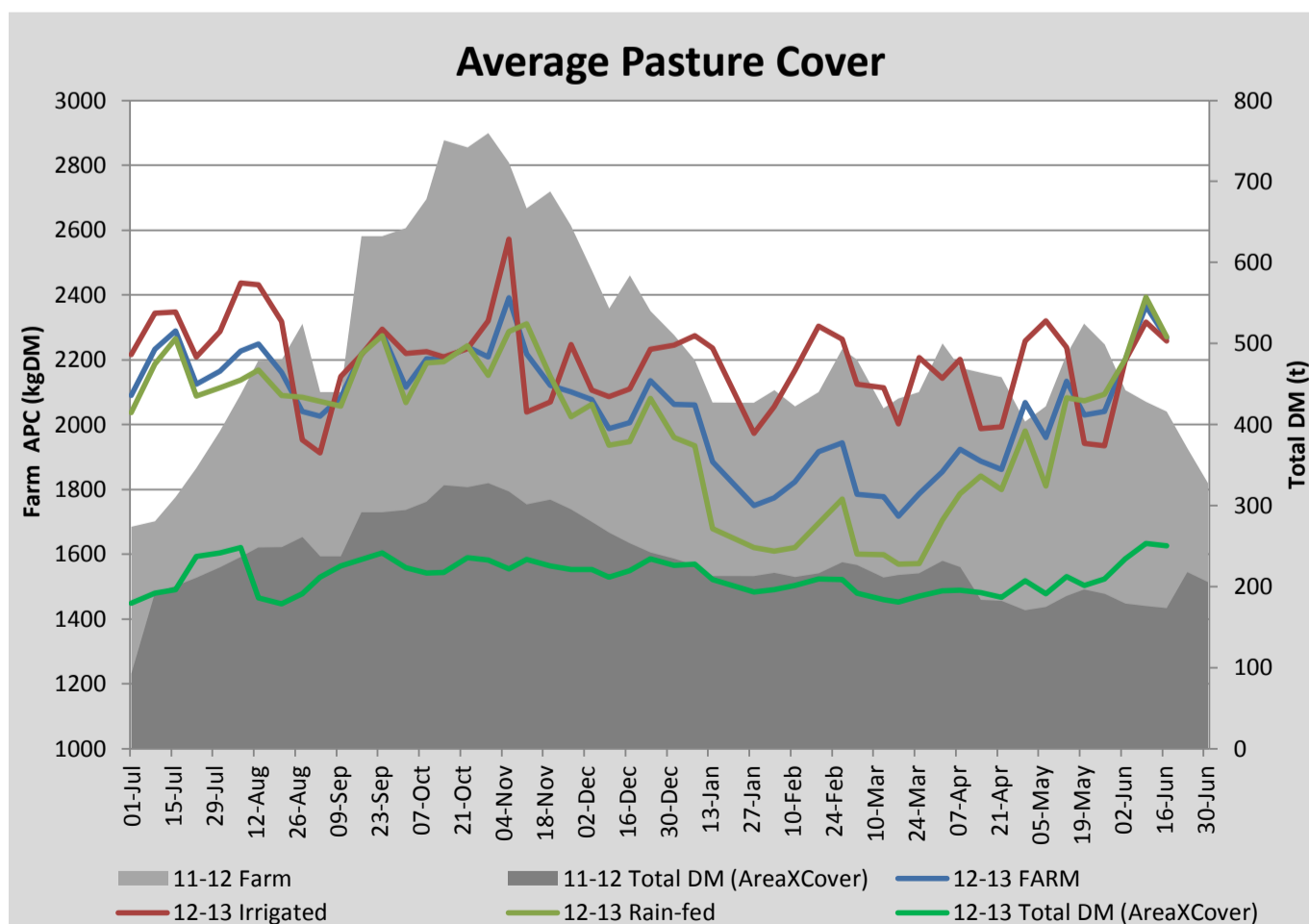
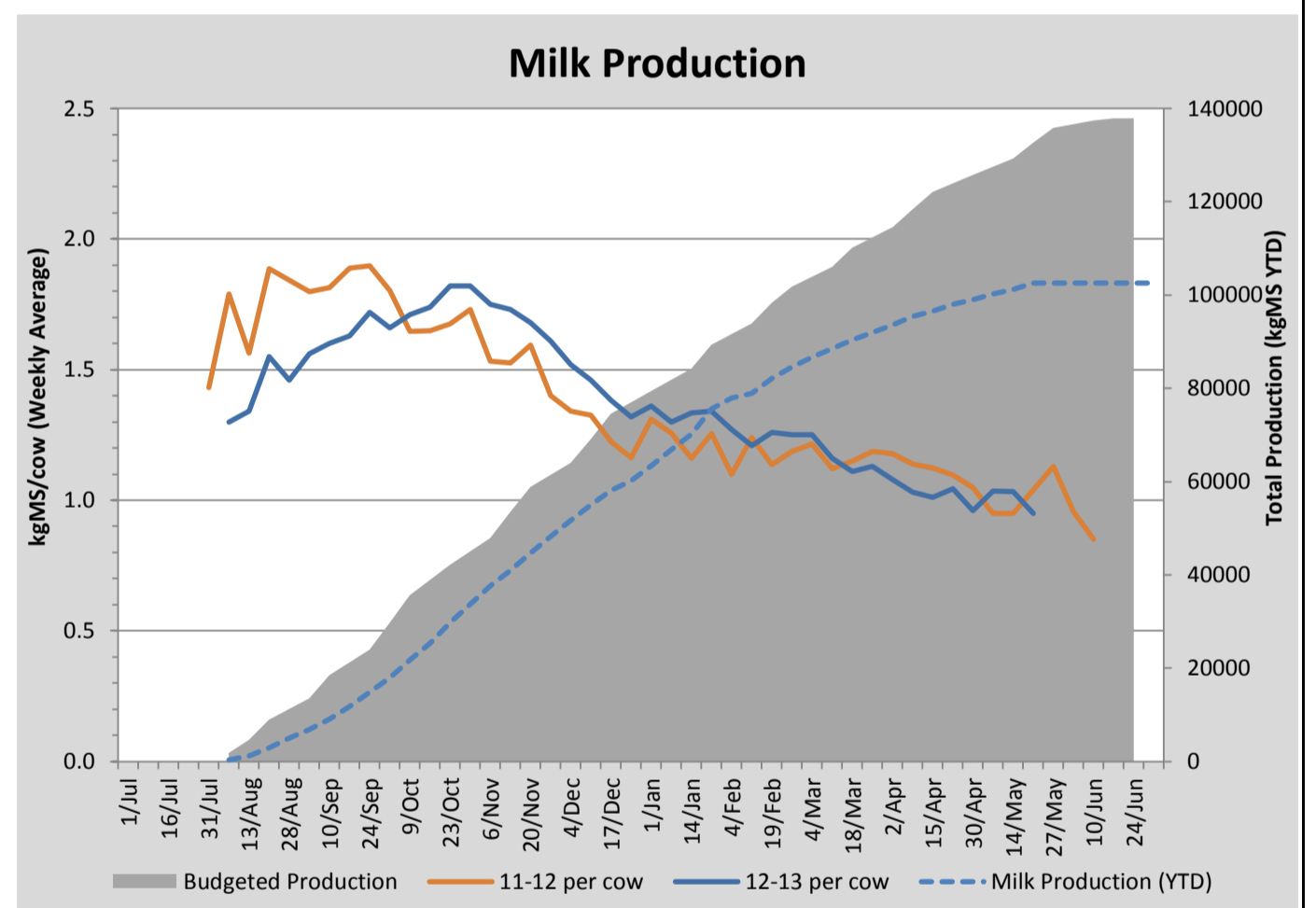
Key Summary Points

- 1 Average pasture cover has dropped this week due to decreasing soil temperature and over estimation with the bike meter last week
- 2 R1 heifers will be removed from the milking platform to graze autumn sown pastures on the run off block
- 3 Work continues with stock water and fencing upgrades

PASTURE INFORMATION	Farm			Irrigated			Rain-fed		
	Last Week	This Week	Variation	Last Week	This Week	Variation	Last Week	This Week	Variation
Grazed milking area (ha)	107.1	110.5	3.4	38.9	41.0	2.13	68.2	69.5	1.24
Rotation Length (days)	108	111		185	82		87	139	
Grazing allocation per day (ha)	1.0	1.0	0.01	0.2	0.5	0.29	0.8	0.5	0.28
Average time since last grazed (days)	61	68	7	40	40	0	73	84	11
Leaf appearance rate (days per leaf)	15	15	0	15	15	0	15	15	0
Average Pasture Cover (kgDM/ha)	2365	2266	-99	2316	2258	-58	2393	2271	-122
Pasture Growth Rate (kgDM/ha/day)	42	15	-27	40	15	-26	43	15	-27
Post Grazing Biomass (kgDM/ha)	1450	1400	50						
Nitrogen applied YTD (kgN/ha)	254	254	0	0	0	0	0	0	0

*Please note all pasture calculations detailed above are based on the current Grazed Milking Area

MILK PRODUCTION	Last Week	This Week	Variation
No cows in milk (vat)	0	0	0.00
Litres per cow	#N/A	#N/A	#N/A
% Fat	#N/A	#N/A	#N/A
% Protein	#N/A	#N/A	#N/A
MS/cow/day	#N/A	#N/A	#N/A
MS/ha/day	#N/A	#N/A	#N/A
BMCC	#N/A	#N/A	#N/A
Average Liveweight (kg)			
	Budget	To Date	Variation
Total Milk Production (kgMS)	137874	102526	74%
MS/ha YTD	1231	#N/A	#N/A

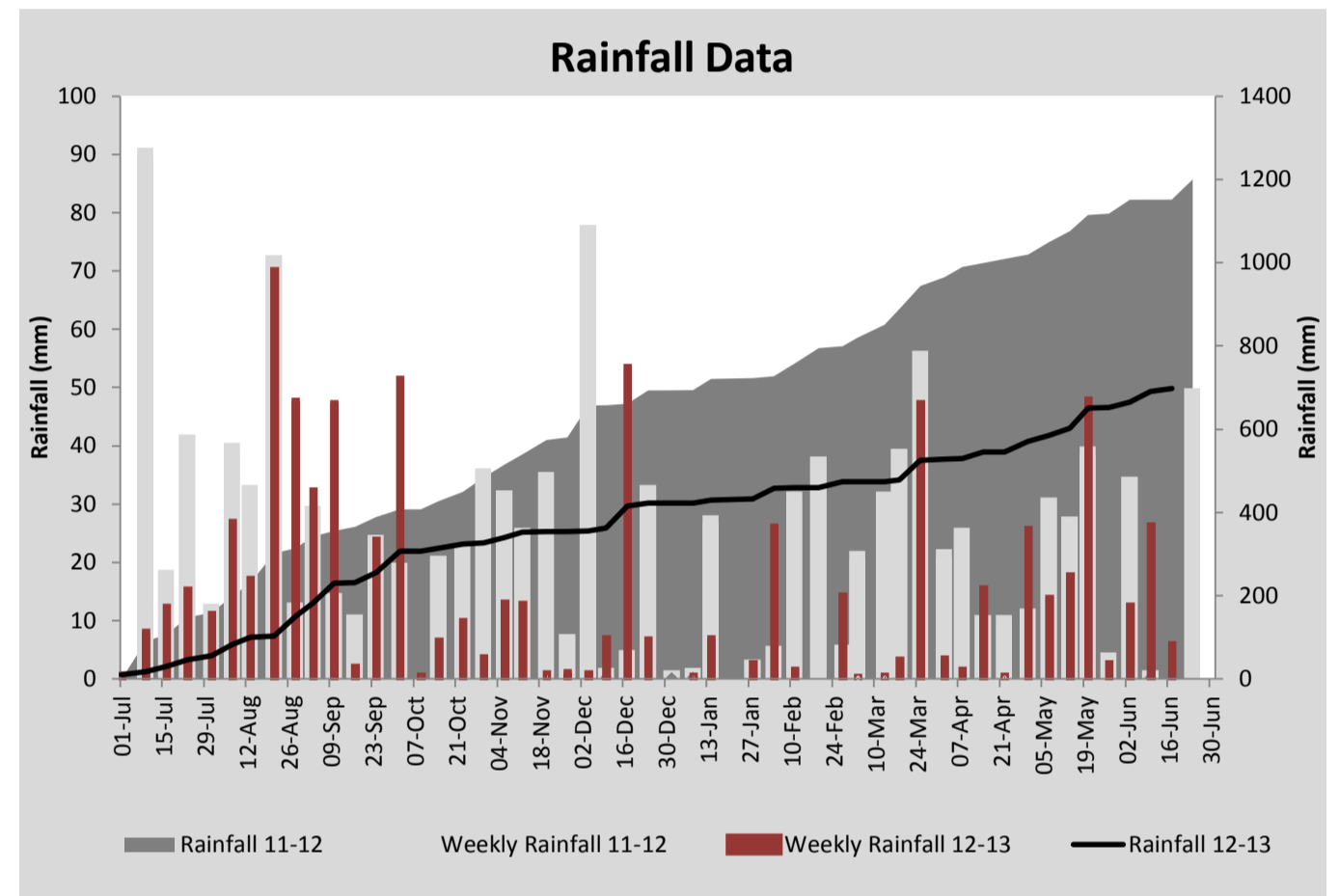
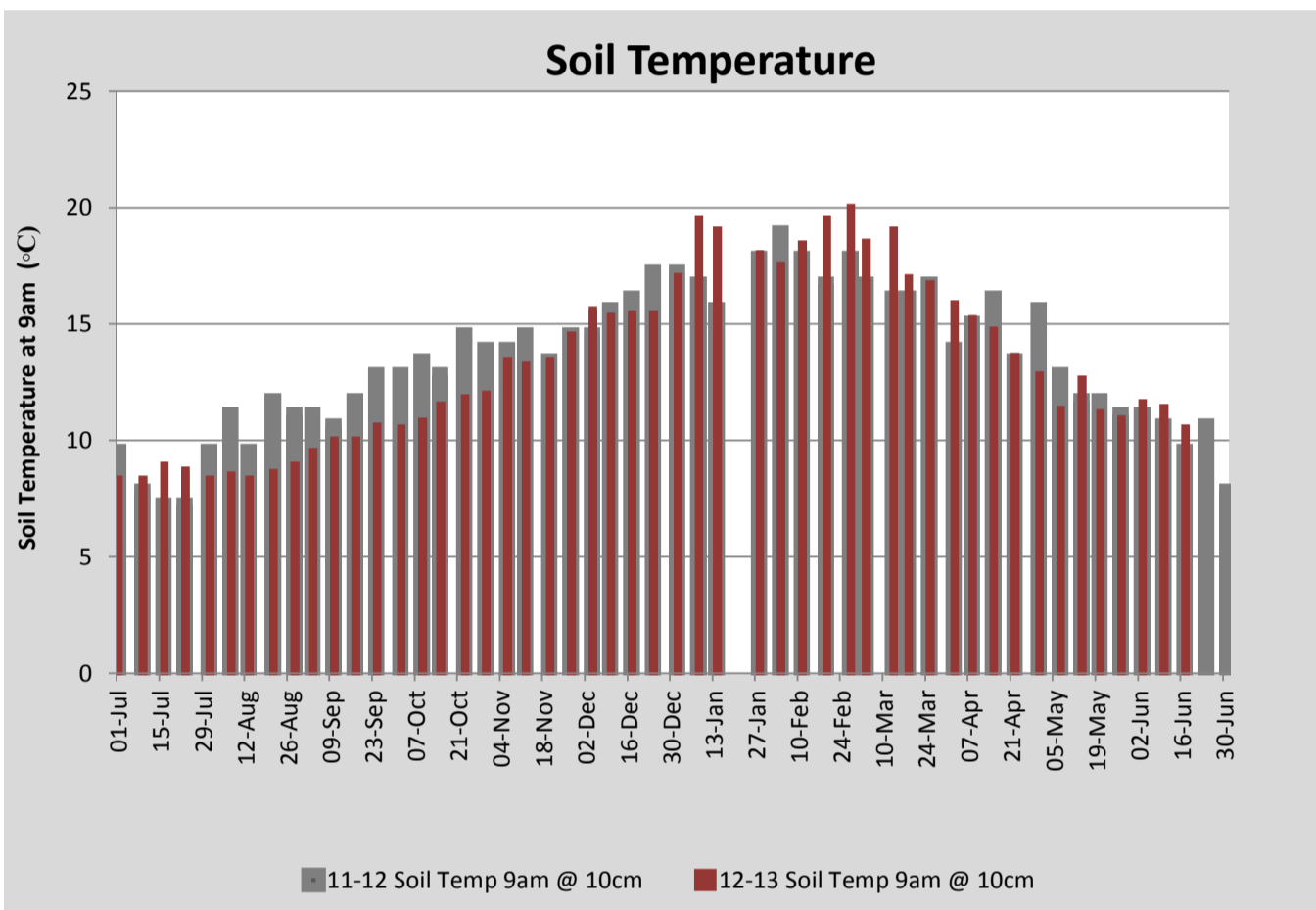




'Tonic' plantain / 'Base' perennial ryegrass - More Milk From Forages (MMFF) research trial



'Tonic' plantain - MMFF



Analysis			
Expected growth rate next 7 days (kgDM/ha/day)	20	Target Leaf Grazing Stage	3.0
Total Demand from Pasture (kgDM/ha/day)	14	Predicted APC 7 days time	2309
APC balance (kgDM/ha/day)	6	Predicted APC Change	42.9

Discussion

Average pasture cover has fallen this week due to over estimation last week and reduced growth rates due to falling soil temperatures. Over estimation may have been caused by wet environmental conditions and build up of mud spatter on the pasture meter sensors. To correct for this, problematic readings (ungrazed paddocks that lost significant cover) from the week 49 report were adjusted using the average growth rate from the week previous (41kgDM/ha/day). The resulting revised average growth rate for week 49 is 42kg/ha/day and 15kg/ha/day for this week which fits with the temperature data we have for the past 3 weeks. This highlights the need for thorough scrutinising of measured values with respect to visual estimates when measuring pasture biomass. R1 heifers will be removed from the milking platform this week to graze autumn sown pasture on the runoff. Up grades to the stock water system are almost complete, with the last of the troughs and piping to be installed in the next few days.

17 June 2013

