

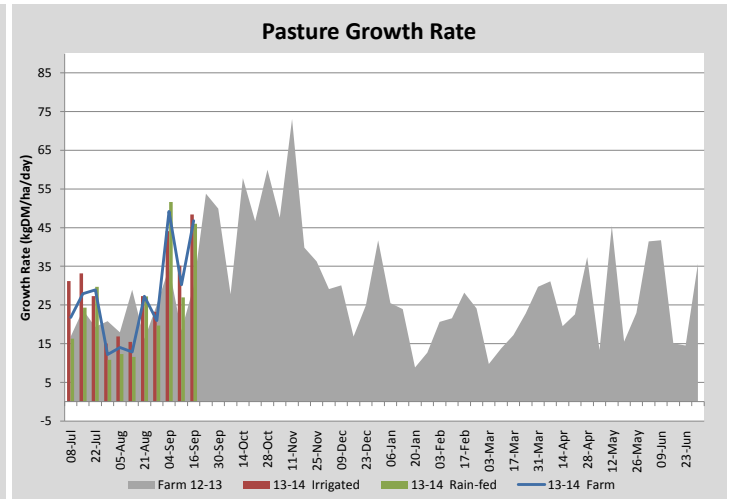
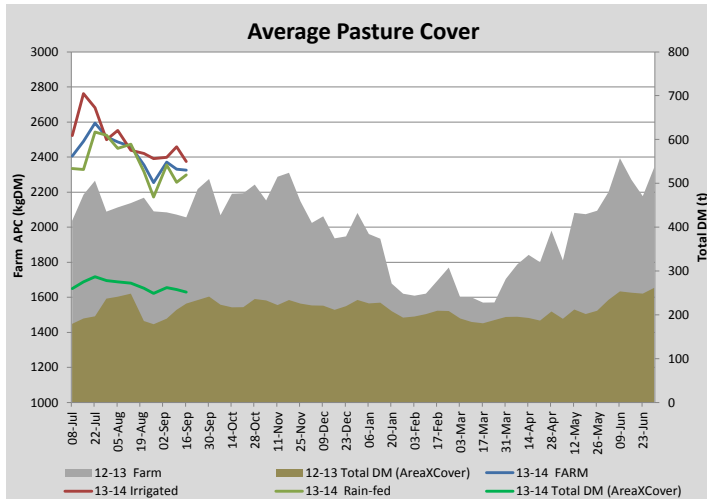
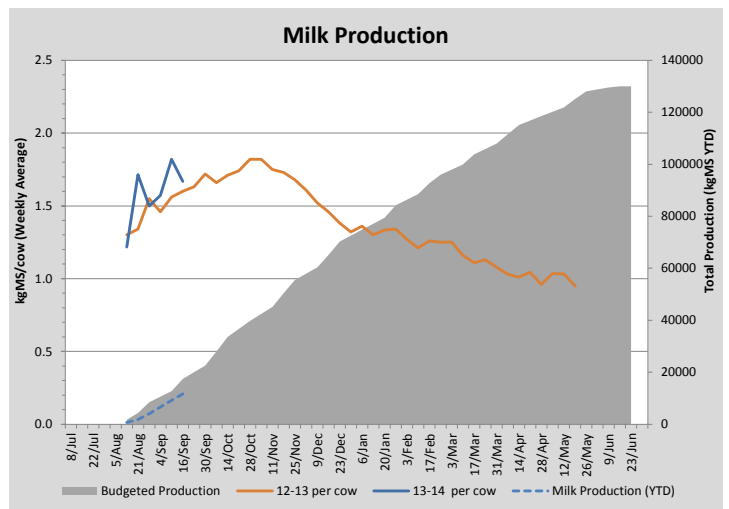
Key Summary Points

- 1** Average pasture cover has held over the past week at 2325kgDM/ha
- 2** Urea has been applied to 30ha of the milking platform (80kg/ha) and 36ha of the run-off (100kg/ha)
- 3** The second round More Milk From Forages grazing study will begin this coming week; grazing 4 treatments over 24ha of the milking platform

PASTURE INFORMATION	Farm			Irrigated			Rain-fed		
	Last Week	This Week	Variation	Last Week	This Week	Variation	Last Week	This Week	Variation
Grazed milking area (ha)	110.5	108.4	2.1	41.0	38.9	2.12	69.5	69.5	0.00
Rotation Length (days)	45	48	4	73	54	-19	36	45	9
Grazing allocation per day (ha)	2.5	2.3	0.23	0.6	0.7	0.16	1.9	1.5	-0.39
Average time since last grazed (days)	65	70	5	66	81	15	64	64	0
Leaf appearance rate (days per leaf)	16	15	-1	16	15	-1	16	15	-1
Average Pasture Cover (kgDM/ha)	2331	2325	-6	2458	2375	-83	2257	2298	41
Pasture Growth Rate (kgDM/ha/day)	30	47	17	35	48	13	27	46	19
Post Grazing Biomass (kgDM/ha)	1610	1510	-100						
Nitrogen applied YTD (kgN/ha)	0	7	7	0	7	7	0	7	7

*Please note all pasture calculations detailed above are based on the current Grazed Milking Area

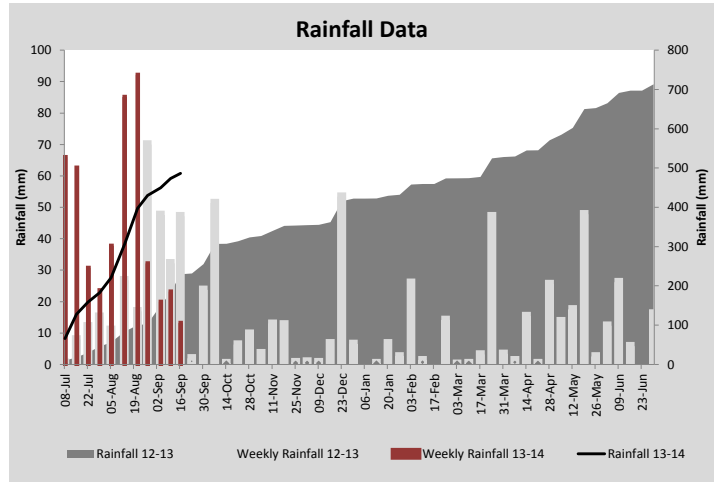
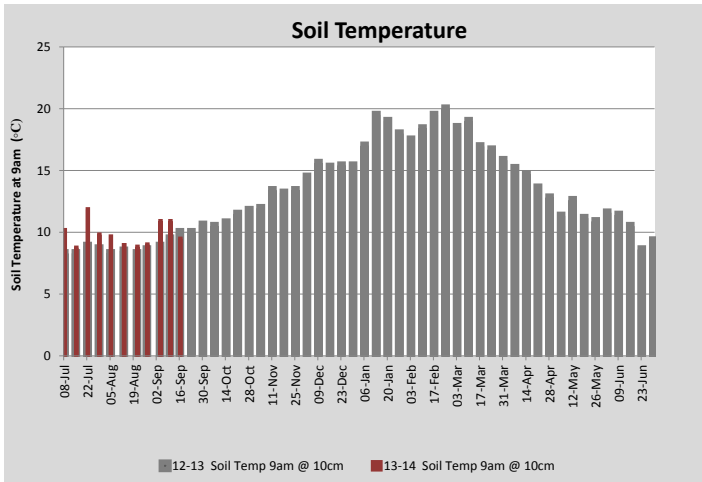
MILK PRODUCTION	Last Week	This Week	Variation
Average No cows in milk (vat)	232	248	16.00
Litres per cow	25.3	23.9	1.35
% Fat	4.15	3.93	0.22
% Protein	3.01	3.08	0.07
MS/cow/day	1.82	1.67	0.15
MS/ha/day	3.74	3.66	0.07
BMCC	138	134	4.00
Average Liveweight (kg)			
	Budget	To Date	Variation
Total Milk Production (kgMS)	17445	11704	67%
MS/ha YTD	156	106	-50



Last 7 days					
Milkers Diet	kg DM	ME	CP	NDF	\$/cow
Pasture Intake	13.0	11.5	25%	50%	0.0
Concentrates	3.5	12.0	0.0	0.0	0.0
Silage	0.0	0.0	0.0	0.0	0.0
Grazed forage	0.0	0.0	0.0	0.0	0.0
Other feeds	0.0	0.0	0.0	0.0	0.0
Total	16.5	191.5	0.245	0.503	0
Target	16.5		0.245	0.503	0

Feed Test Results	Ryegrass	Ryegrass / Cocksfoot
Dry Matter (%)	10.4	12
Moisture (%)	89.6	88
Crude Protein (% of dry matter)	27	22
Acid Detergent Fibre (% of dry matter)	19.3	29.6
Neutral Detergent Fibre (% of dry matter)	48	52.5
Digestibility (DMD) (% of dry matter)	76.8	73.6
Digestibility (DOMD) (Calculated) (% of dry matter)	71.9	69.2
Est. Metabolisable Energy (Calculated) (MJ/kg DM)	11.6	11

Feed test results 13 September 2013



Analysis			
Expected growth rate next 7 days (kgDM/ha/day)	30	Target Leaf Grazing Stage	2.5
Total Demand from Pasture (kgDM/ha/day)	32	Predicted APC 7 days time	2312
APC balance (kgDM/ha/day)	-2	Predicted APC Change	-13.5

Discussion

Average pasture cover has held over the past week at 2325kgDM/ha. Over the past couple of weeks we have had to work around paddocks to be grazed for the More Milk From Forages (MMFF) grazing study to ensure that there were sufficient covers on the trial plots. As the MMFF research trial occupies 24 ha of the grazing platform, the current effective rotation is 37 days and no significant surplus in pasture cover has developed. We expect a surplus to develop over the coming week as grazing begins on the MMFF trial (as of Tuesday). A 2:1 urea/sulphate of ammonia blend (mix due to shortage of urea in the state) has been spread over 30ha of the milking platform at 80kg/ha (30kgN/ha) and 36ha of the run off at 100kg/ha (36kgN/ha). Average milksolid production per cow dropped this week to 1.67kgMS/cow/day. This drop is most likely a result of the wet weather we experienced last week. There are currently 68 cows remaining to calve. Calf rearing is progressing well with no disease issues within the facility so far this season. We are currently rearing 113 heifers.

16 September 2013

