

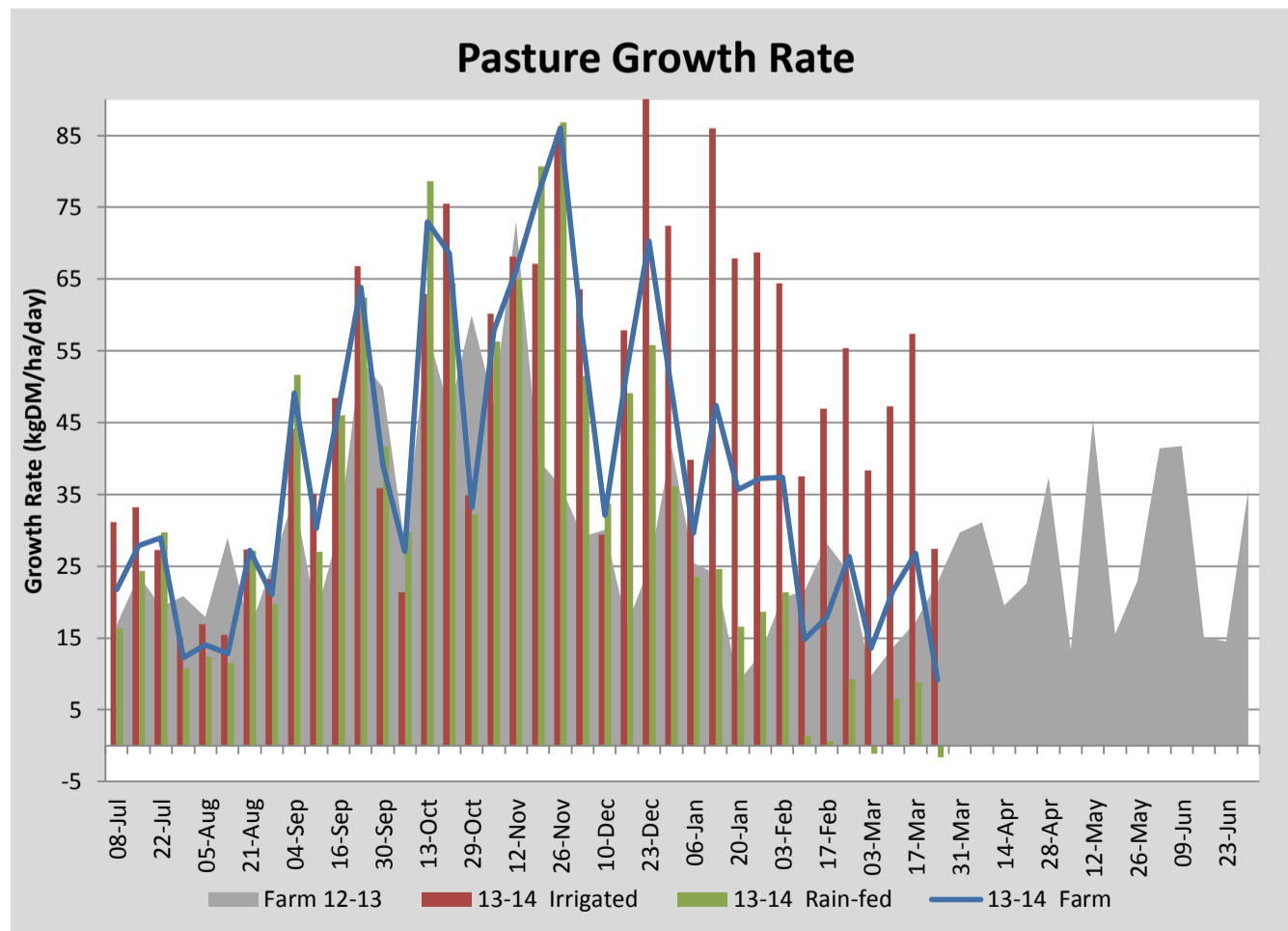
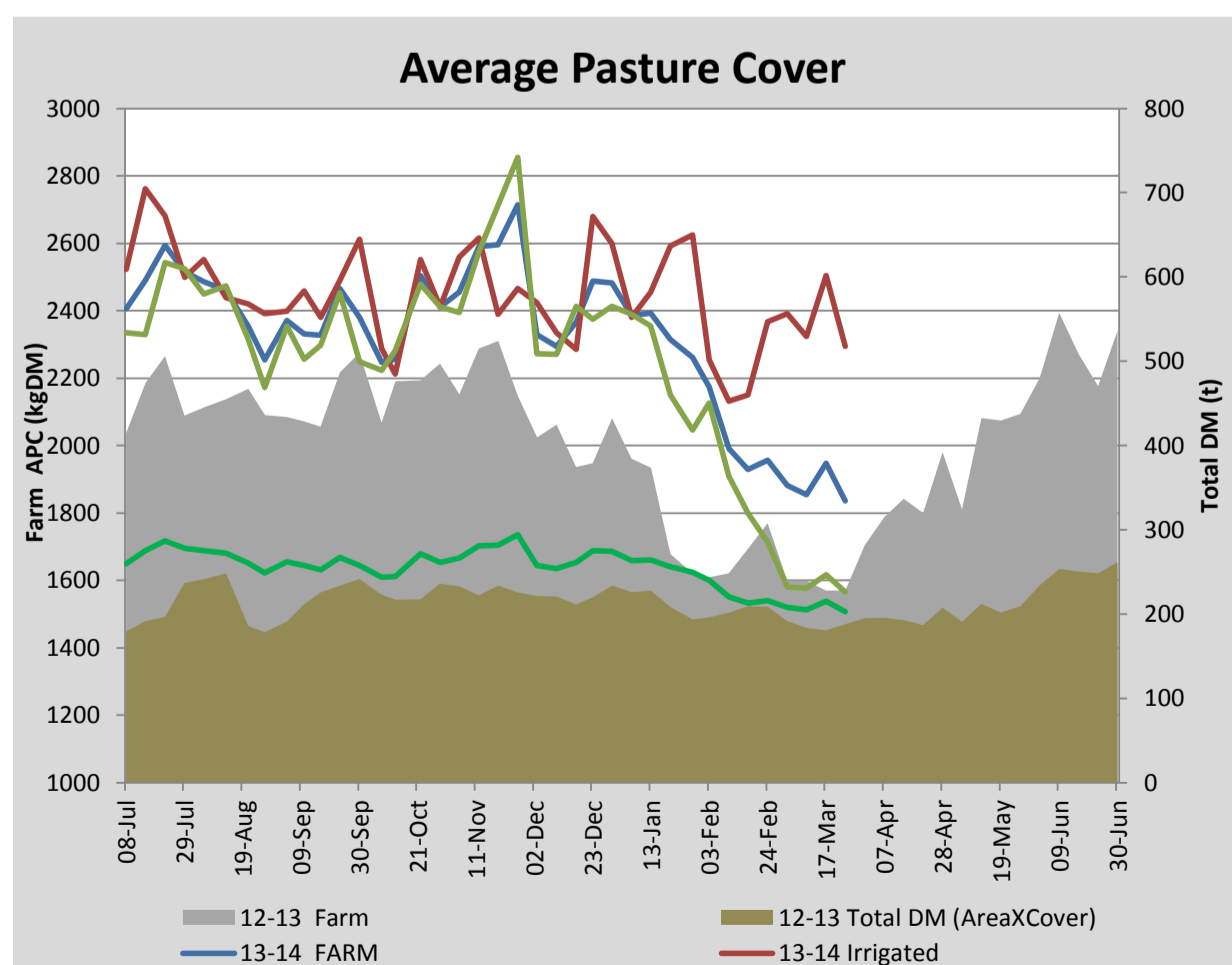
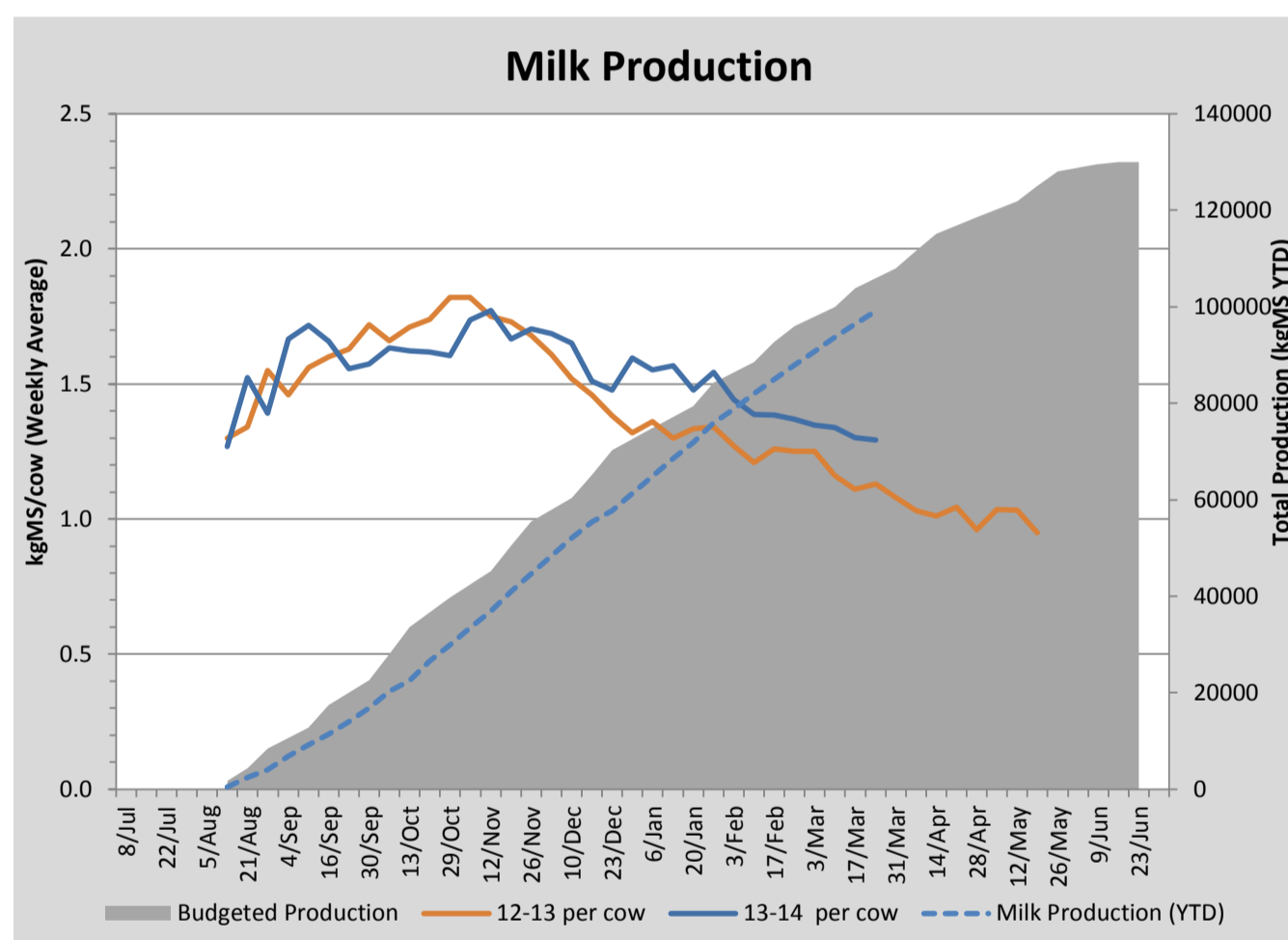
Key Summary Points

- 1 Average pasture cover has decreased this week with poor growth rates on the irrigated paddocks and reduced cover on the rainfed paddocks due to composting of dead standing material.
- 2 Per cow milksolid production held this week.
- 3 Focus for the coming week is to apply urea to rain fed paddocks on both the milking platform and run off to boost growth from expected rainfall.

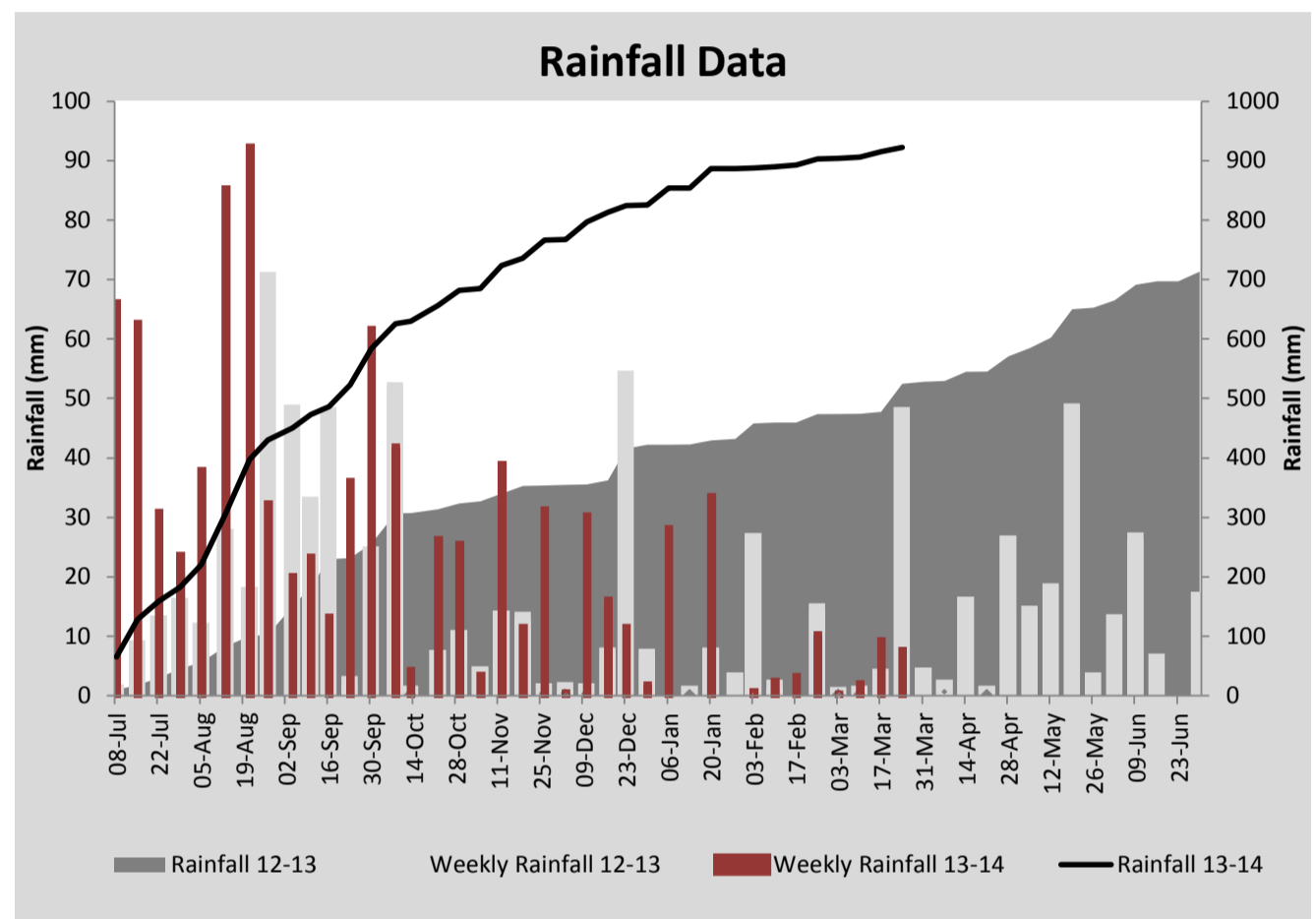
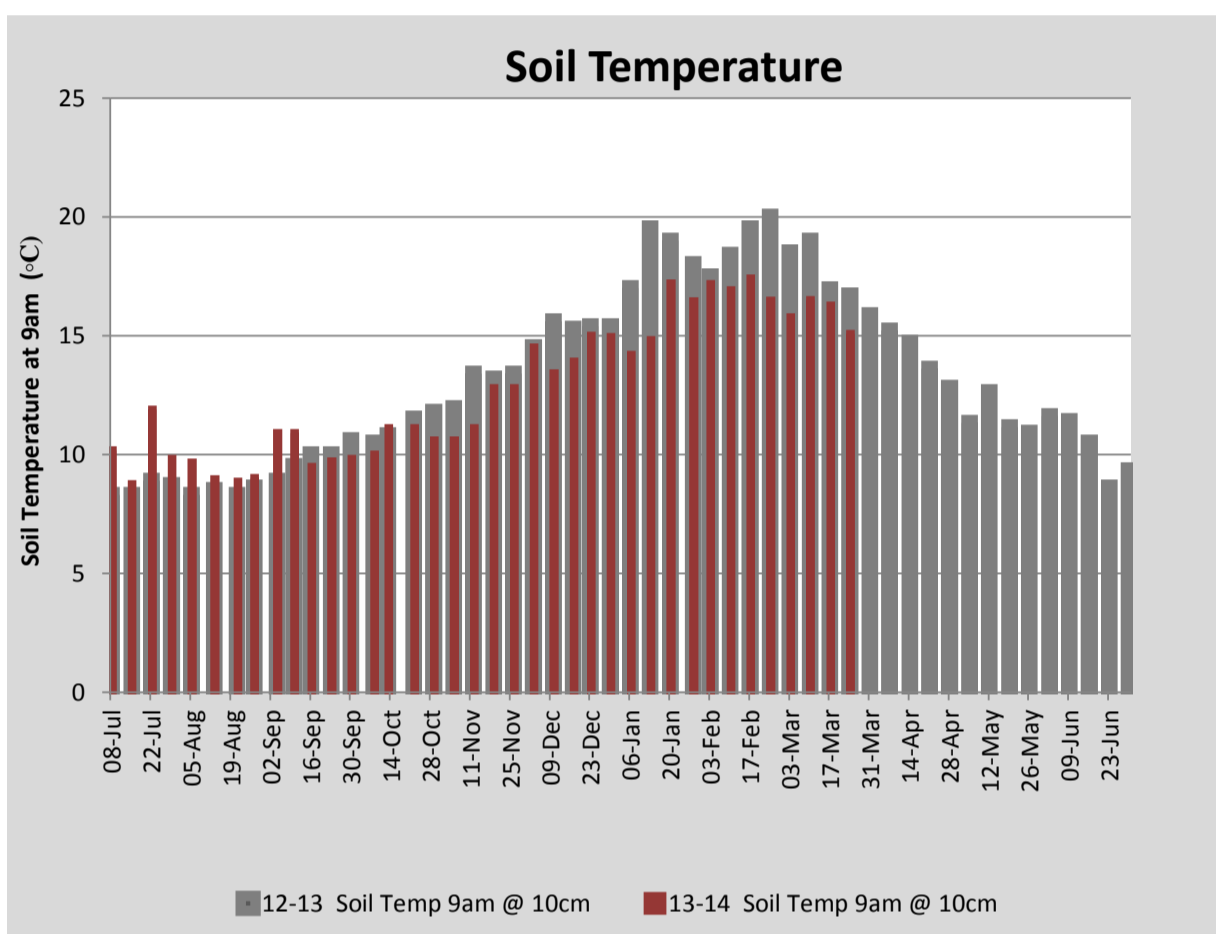
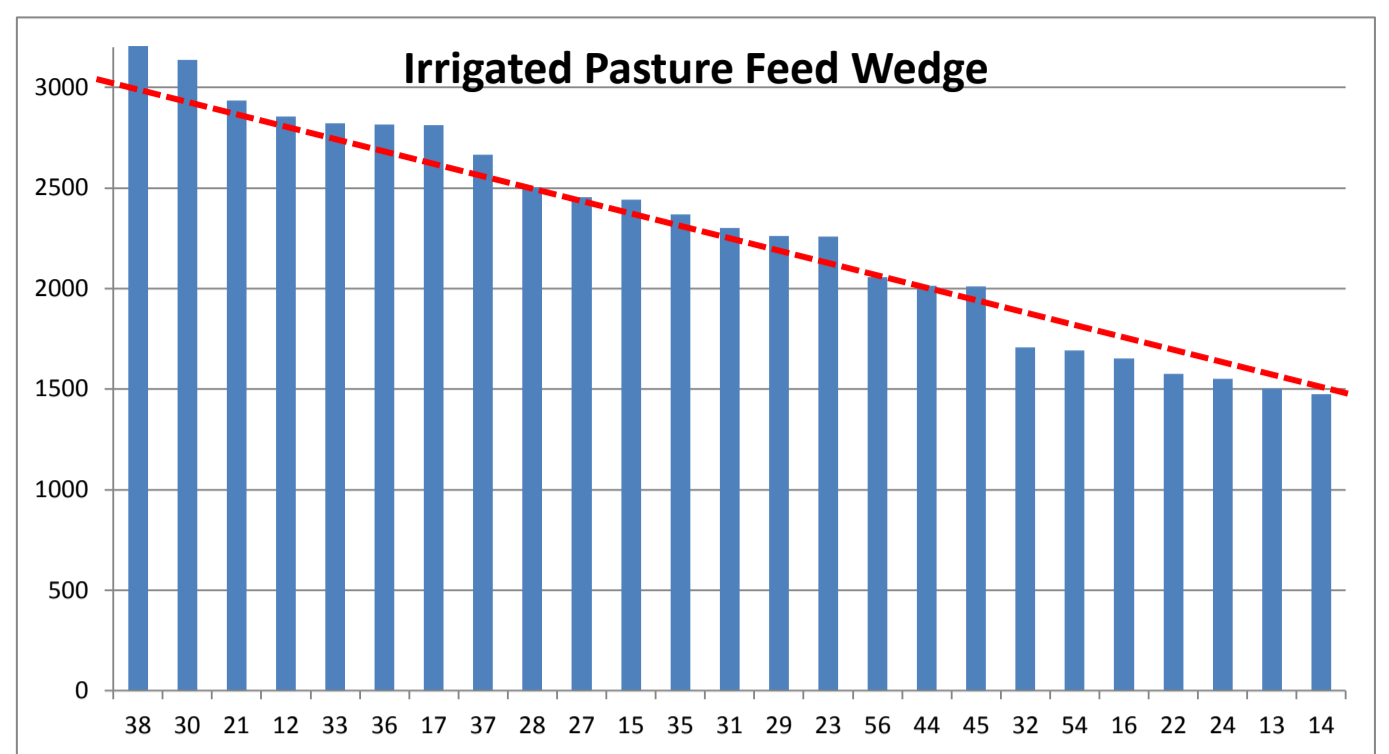
PASTURE INFORMATION	Farm			Irrigated			Rain-fed		
	Last Week	This Week	Variation	Last Week	This Week	Variation	Last Week	This Week	Variation
Grazed milking area (ha)	110.5	110.5	0.0	41.0	41.0	0.0	69.5	69.5	0
Rotation Length (days)	92	74	-18	41	27	-14	347	0	-347
Grazing allocation per day (ha)	1.2	1.5	0.3	1.0	1.5	0.5	0.2	0.0	-0.2
Average time since last grazed (days)	46	#N/A	#N/A	31	34	3	55	N/A	N/A
Leaf appearance rate (days per leaf)	16	16	0	10	10	0	19	19	0
Average Pasture Cover (kgDM/ha)	1946	1836	-110	2504	2294	-210	1617	1566	-52
Pasture Growth Rate (kgDM/ha/day)	27	9	-18	57	27	-30	9	-2	-10
Post Grazing Biomass (kgDM/ha)	1366	1526	160						
Nitrogen applied YTD (kgN/ha)	113	120	7	0	15	15	0	2	2

*Please note all pasture calculations detailed above are based on the current Grazed Milking Area

MILK PRODUCTION	Last Week	This Week	Variation
Average No. cows in milk (vat)	302	300	-2
Litres per cow	16.0	15.3	-0.7
% Fat	4.72	4.91	0.19
% Protein	3.54	3.54	0.00
MS/cow/day	1.30	1.29	-0.01
MS/ha/day	3.48	3.43	-0.05
BMCC	172	153	-19
Average Liveweight (kg)	524	524	0
	Budget	To Date	Variation
Total Milk Production (kgMS)	105,905	99,104	94%
MS/ha YTD	946	930	-15



Last 7 days					
Milkers Diet	kg DM	MJ ME	CP (%)	NDF (%)	\$/cow
Pasture Intake	7.7	11.4	25.8	41.0	0.0
Concentrates	5.3	13.0	11.0	21.0	0.0
Silage	3.5	10.6	13.6	54.8	0.0
Grazed forage	0.0	0.0	0.0	0.0	0.0
Other feeds	0.0	0.0	0.0	0.0	0.0
Total	16.5	193.8	18.4	37.5	0
Target		191	16-18	>33	0



Analysis			
Expected growth rate next 7 days (kgDM/ha/day)	25	Target Leaf Grazing Stage	3.0
Total Demand from Pasture (kgDM/ha/day)	17	Predicted APC 7 days time	1889
APC balance (kgDM/ha/day)	8	Predicted APC Change	53.1

Discussion

Average pasture cover has decreased this week with poor growth rates on the irrigated paddocks and a reduction in cover on the rainfed paddocks. The reduced growth rates on the irrigated paddocks are most likely due to a gap in the urea applications. We expect these growth rates to improve this coming week with 30kgN/ha being applied to all grazed paddocks and 40kgN/ha being applied to irrigated More Milk From Forages (MMFF) trial paddocks. The rainfed paddocks are starting to green up after recent rainfall however average cover has decreased as dead standing cover starts to compost. We are looking to apply 30kgN/ha to 34 ha of the rainfed area and 40kgN/ha to all rainfed MMFF trial paddocks this coming week. We will also apply urea to 15ha of the run off at 65kg/ha (30kgN/ha). We will look to hold or if possible slow the rotation on the irrigated paddocks this coming week to maintain cover. To achieve this we will increase concentrate feeding to approximately 6kg/cow/day and silage to 4.3kg/cow/day. Per cow production held this week at 1.29kgMS/cow/day. All empty/surplus R2 and R1 heifers were sold this week, freeing up space on the run off for dry cows.

24 March 2014

