

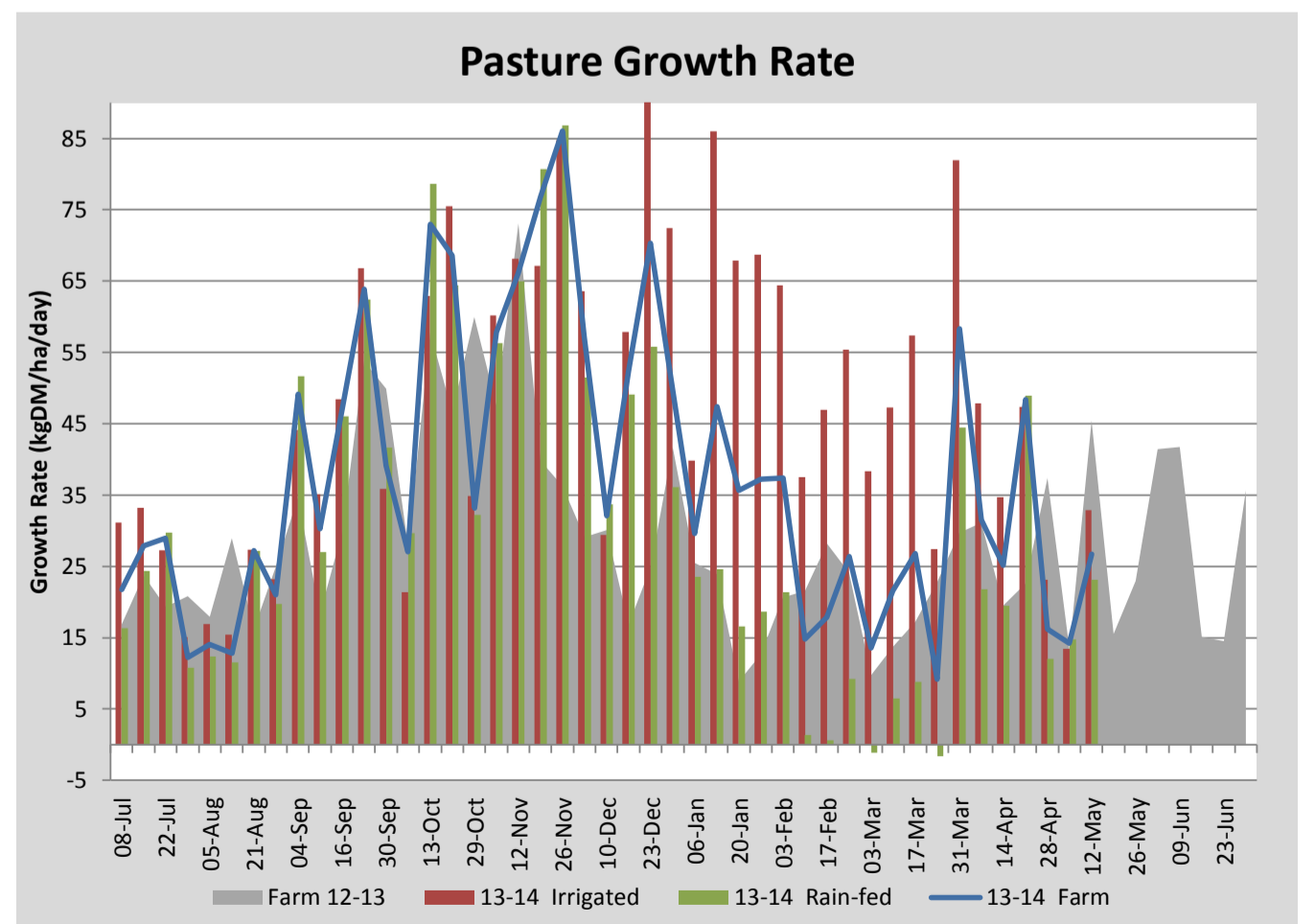
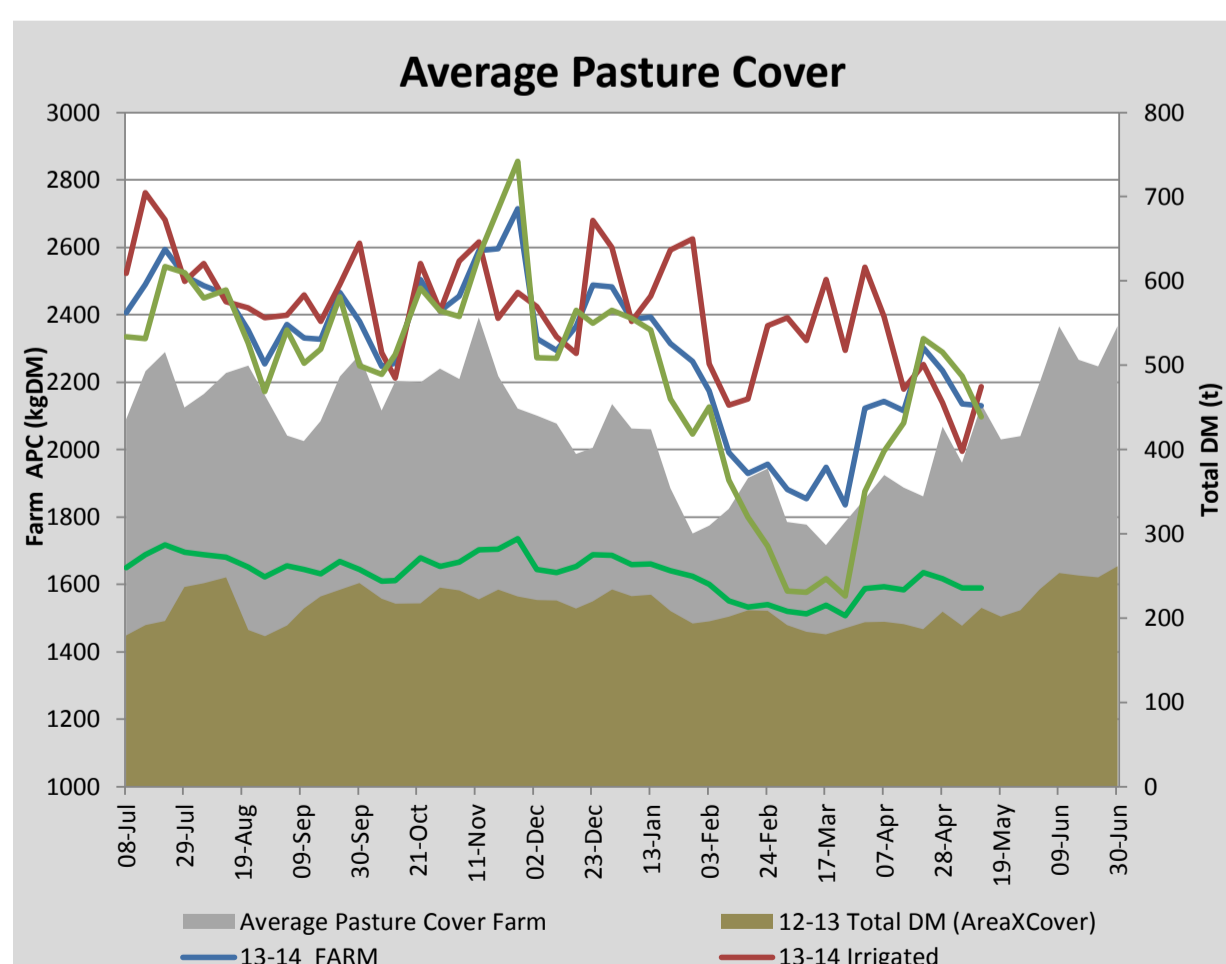
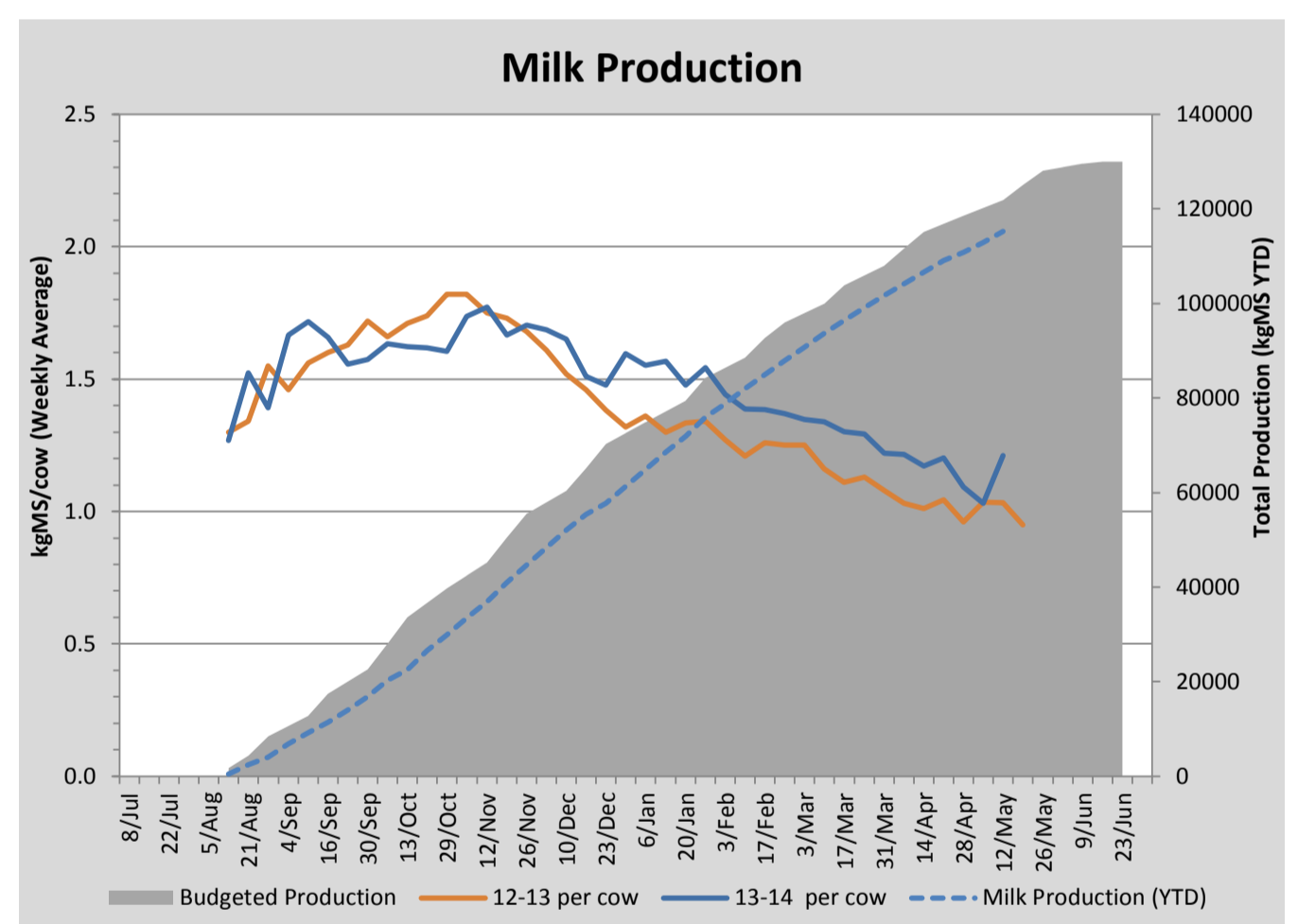
## Key Summary Points

- 1 Average pasture cover has held this week with improved growth rates observed across the milking platform.
- 2 20tDM of silage has been bought in to supplement young stock and aid in building cover on the run-off.
- 3 Key focus for the coming week is to sell off all surplus dry stock to reduce pasture demand and build cover.

PASTURE INFORMATION	Farm			Irrigated			Rain-fed		
	Last Week	This Week	Variation	Last Week	This Week	Variation	Last Week	This Week	Variation
Grazed milking area (ha)	110.5	110.5	0.0	41.0	41.0	0.0	69.5	69.5	0
Rotation Length (days)	61	74	12	46	410	365	77	50	-28
Grazing allocation per day (ha)	1.8	1.5	-0.3	0.9	0.1	-0.8	0.9	1.4	0.5
Average time since last grazed (days)	65	88	23	31	61	30	85	104	19
Leaf appearance rate (days per leaf)	14	16	2	12	16	4	15	16	1
Average Pasture Cover (kgDM/ha)	2135	2130	-5	1995	2186	191	2217	2097	-120
Pasture Growth Rate (kgDM/ha/day)	14	27	12	13	33	19	15	23	8
Post Grazing Biomass (kgDM/ha)	1403	1414	11						
Nitrogen applied YTD (kgN/ha)	148	148	0	6	0	-6	0	0	0

\*Please note all pasture calculations detailed above are based on the current Grazed Milking Area

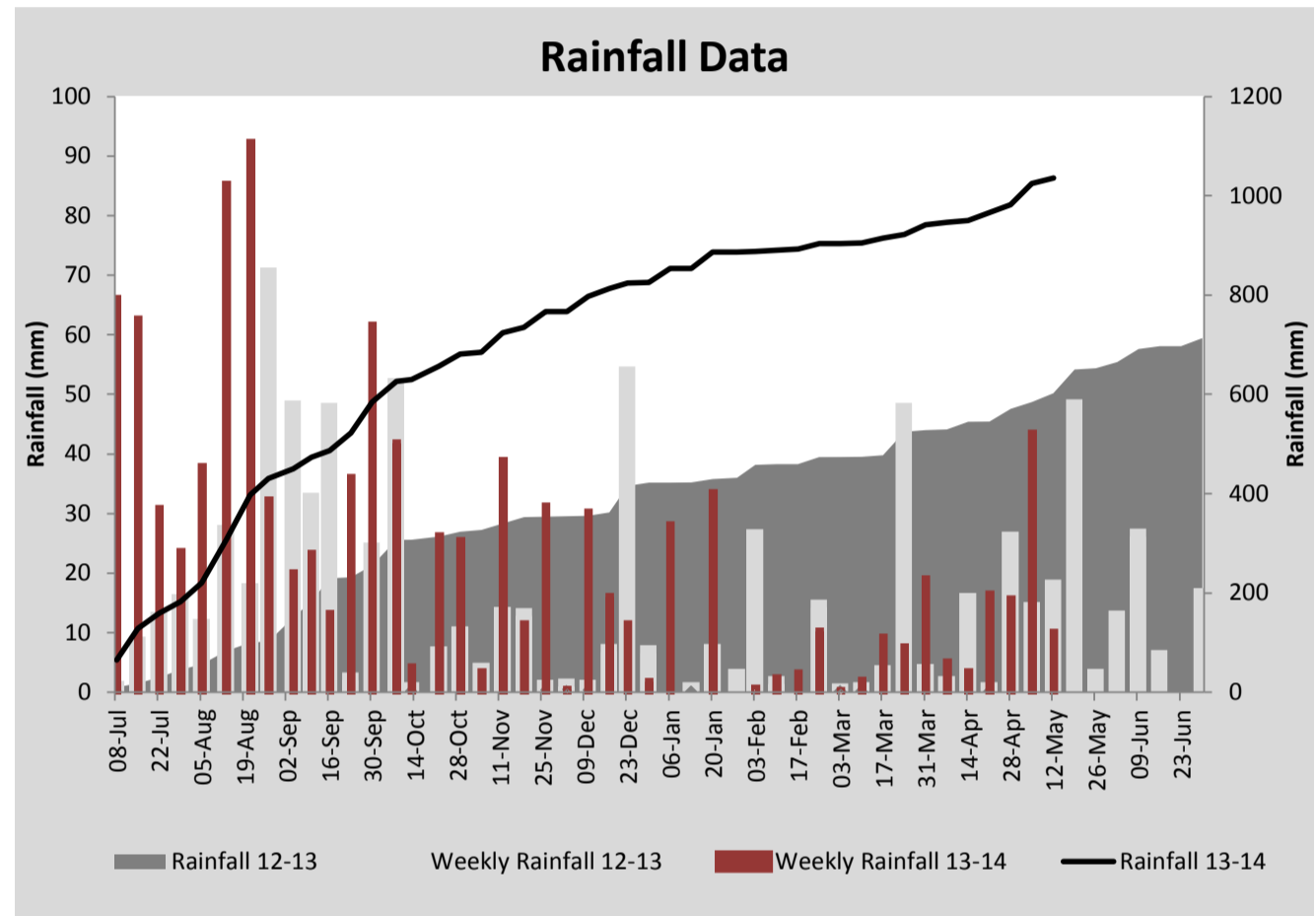
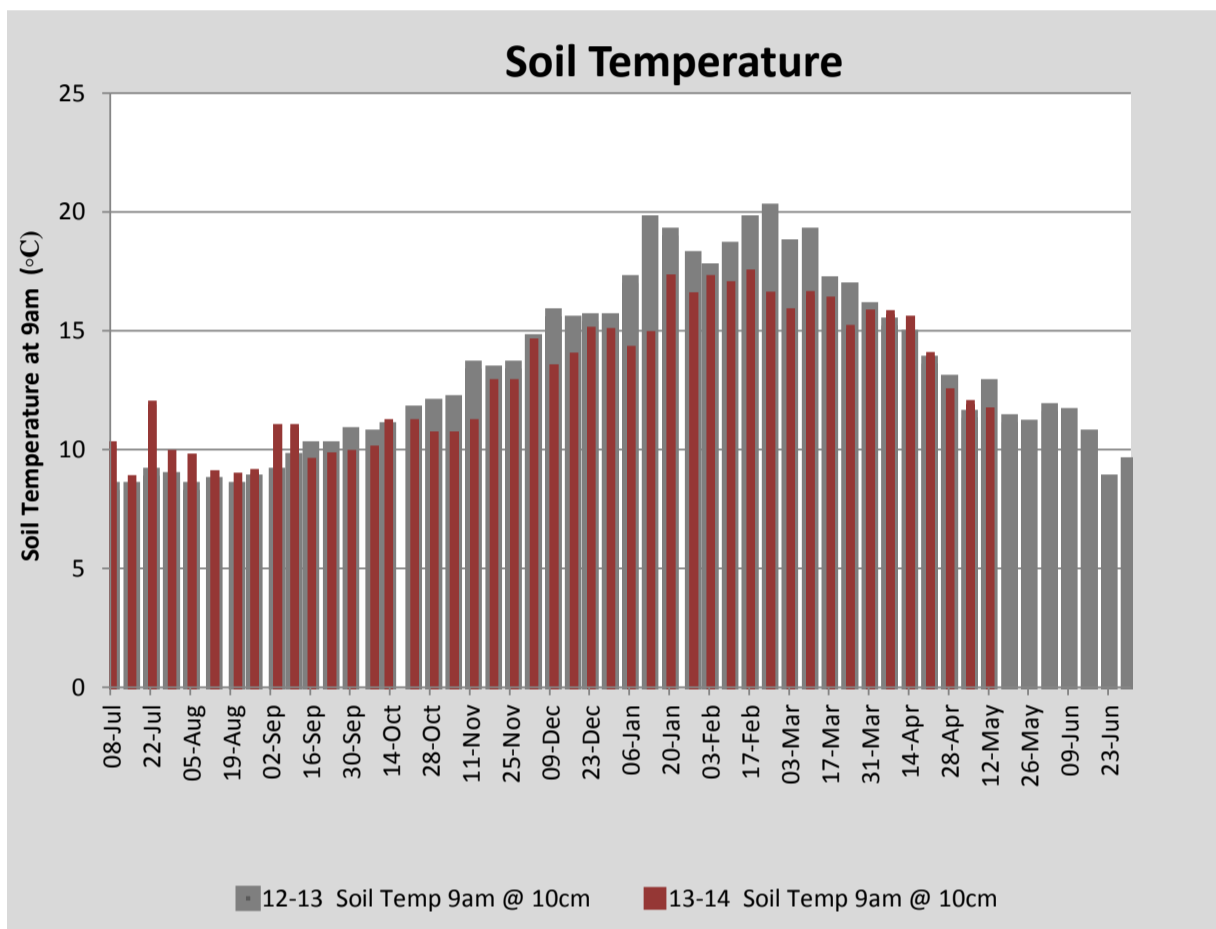
MILK PRODUCTION	Last Week	This Week	Variation
Average No. cows in milk (vat)	293	285	-8
Litres per cow	11.4	13.7	2.2
% Fat	5.23	5.05	-0.18
% Protein	3.85	3.73	-0.12
MS/cow/day	1.03	1.21	0.18
MS/ha/day	2.67	3.06	0.38
BMCC	176	166	-10
Average Liveweight (kg)	528	532	4
	Budget	To Date	Variation
Total Milk Production (kgMS)	121,873	115,285	95%
MS/ha YTD	1088	1082	-6



Last 7 days					
Milkers Diet	kg DM	MJ ME	CP (%)	NDF (%)	\$/cow
Pasture Intake	6.4	12.3	21.6	45.6	0.0
Concentrates	5.8	13.0	11.0	21.0	0.0
Silage	2.4	9.5	13.6	54.8	0.0
Grazed forage	0.0	0.0	0.0	0.0	0.0
Other feeds	1.9	8.5	13.6	54.8	0.0
<b>Total</b>	<b>16.5</b>	<b>193.1</b>	<b>15.8</b>	<b>39.4</b>	<b>0</b>
<b>Target</b>		<b>191</b>	<b>16-18</b>	<b>&gt;33</b>	<b>0</b>



Muck spreader used to spread effluent solids



Analysis			
Expected growth rate next 7 days (kgDM/ha/day)	20	Target Leaf Grazing Stage	3.0
Total Demand from Pasture (kgDM/ha/day)	16	Predicted APC 7 days time	2159
APC balance (kgDM/ha/day)	4	Predicted APC Change	28.5

## Discussion

Average pasture cover held this week with good growth rates observed across the milking platform. Average pasture cover on the run-off block is quite low, estimated at 1850kgDM/ha this week. With silage reserves running low an additional 20t(DM) of silage has been purchased to supplement R1 heifers and see the cows through to dry off. This will enable us to slow the rotation on the run-off and build cover while also improving live weight gain of the R1 heifers. To make the current reserves of silage stretch, 1.9kgDM of good quality hay has been added to the milkers diet. R2 heifers are currently on-off grazing the lucerne, being currently allocated approximately 3kgDM lucerne, 2kgDM pasture and 4kgDM Hay. Lucerne breaks are being sprayed with bloat oil prior to grazing. Once grazed, we will look to start a herbicide program to control broad leaf weeds. We are starting to see some isolated cockchafer damage in some paddocks, particularly in paddocks grazed out hard over summer. From test holes dug in damaged areas we have found up to 7 black-headed cockchafers per spadeful. To manage this we will spray affected paddocks post grazing with Dominex Duo at 100ml/ha. Key focus for the coming week is to build cover prior to dry-off by selling off all surplus stock and increasing supplementation of remaining dry stock to slow the rotation.

# 12 May 2014

