

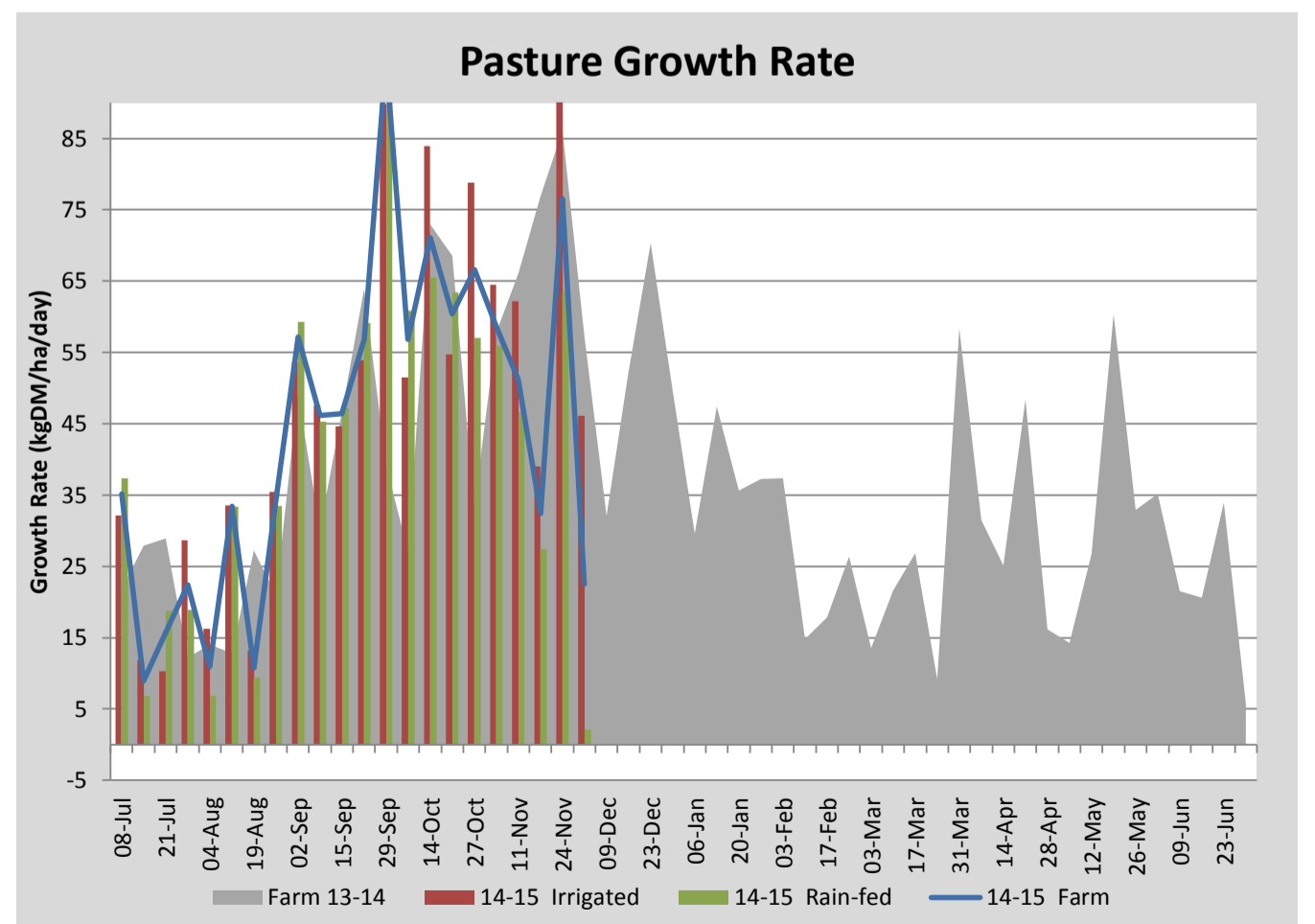
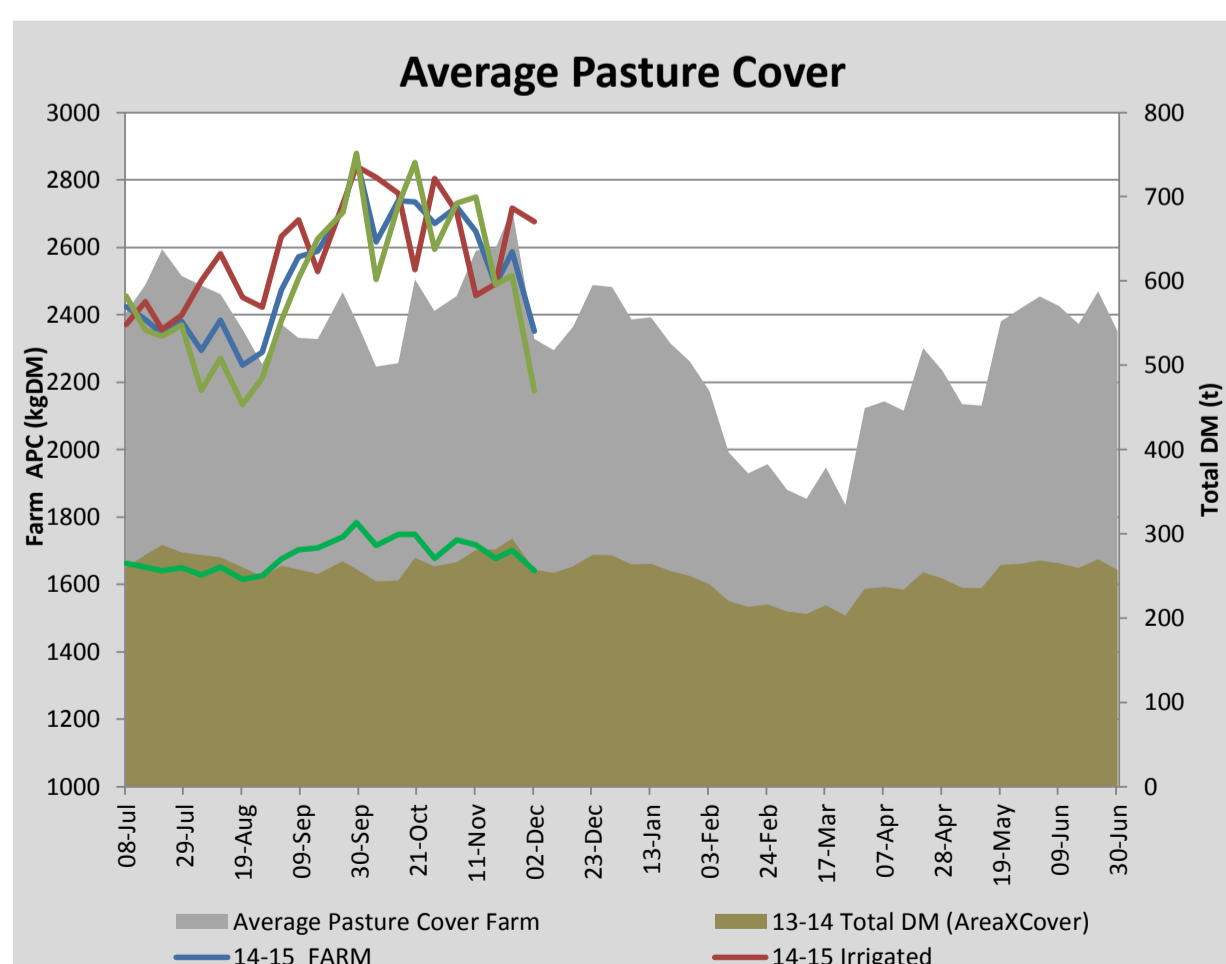
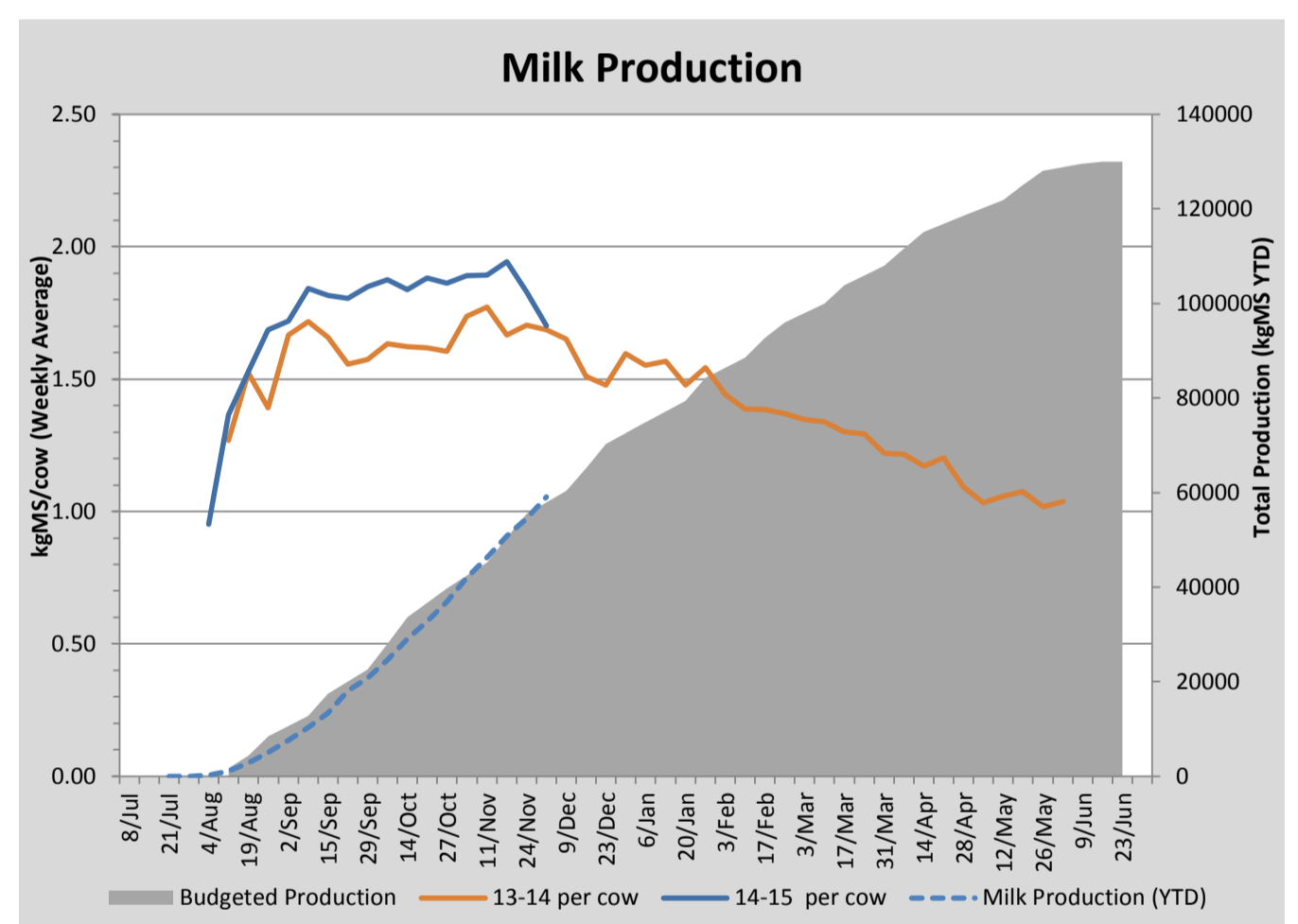
Key Summary Points

- 1 Average pasture cover decreased significantly this week to 2351kgDM/ha with very little growth on the dryland paddocks (2kgDM/ha/day average).
- 2 Per cow production has decreased to 1.7kgMS/cow/day. This is most likely due to a continuing decline in pasture quality as more of the pasture turns reproductive.
- 3 Key focus for the coming week is to maintain cover and pasture quality on the irrigated paddocks by maintaining a rotation of 30 days and pregraze topping paddocks that have run to head.

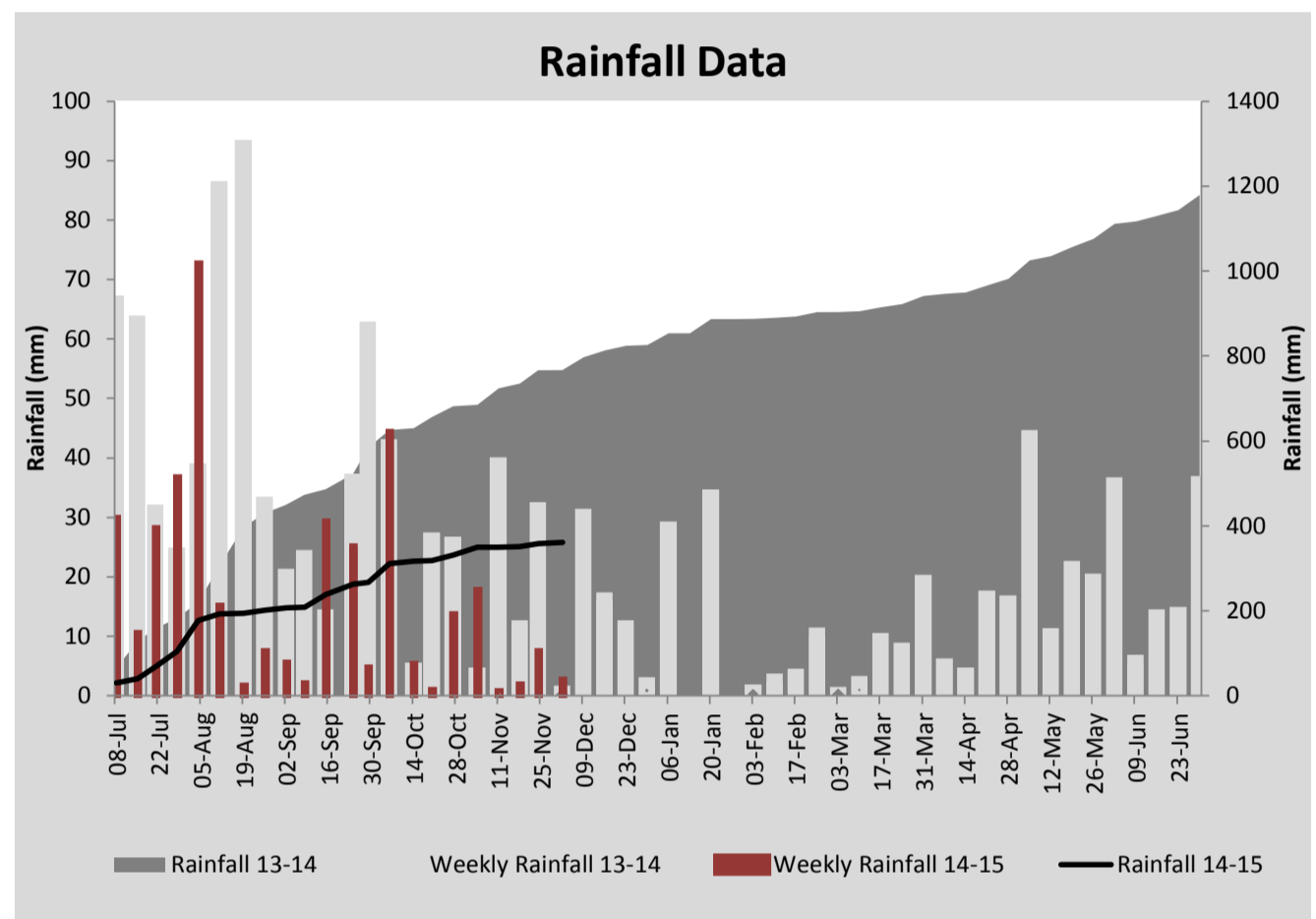
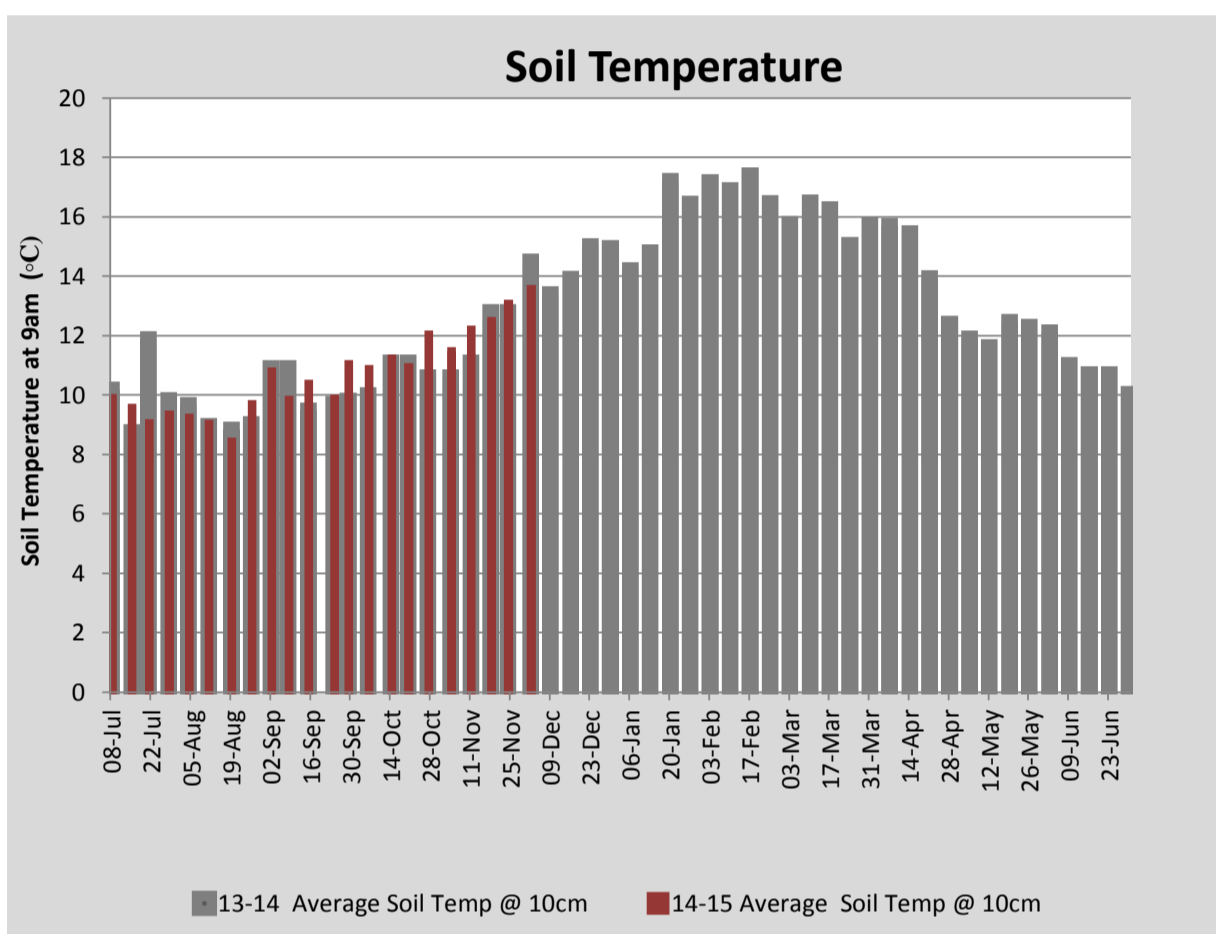
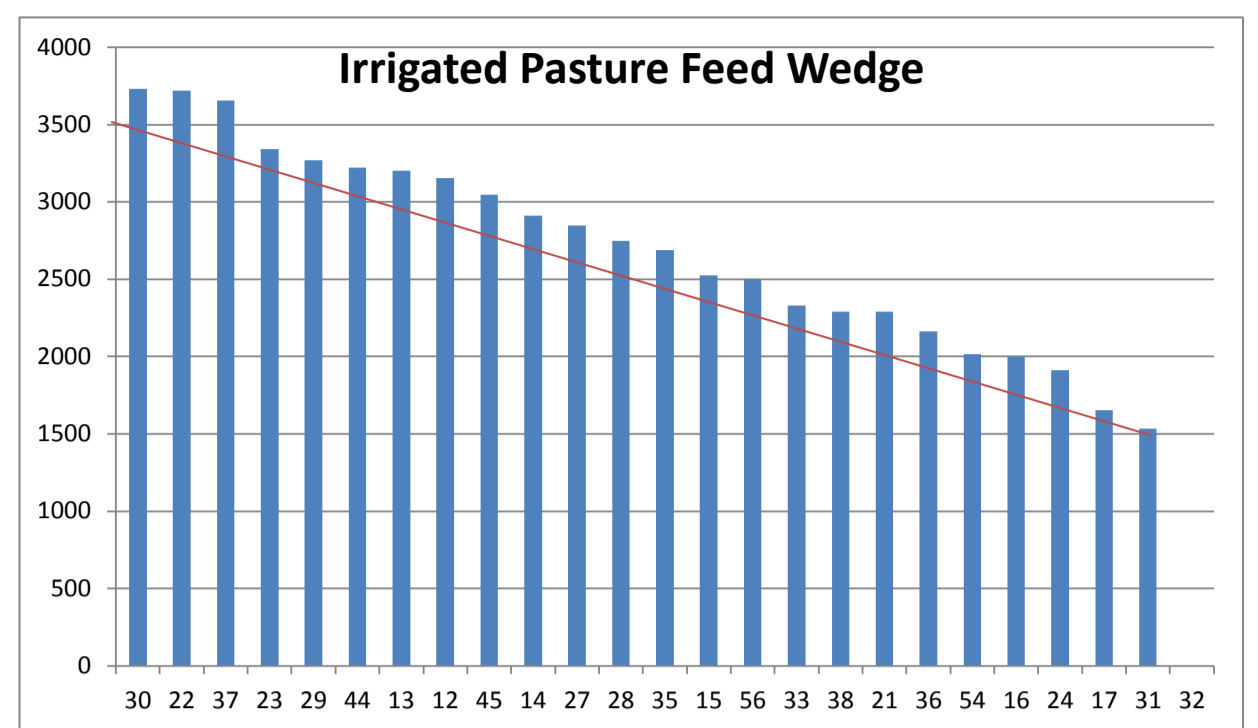
PASTURE INFORMATION	Farm			Irrigated			Rain-fed		
	Last Week	This Week	Variation	Last Week	This Week	Variation	Last Week	This Week	Variation
Grazed milking area (ha)	108.4	108.8	0.4	38.4	38.4	0.0	70.4	70.4	0
Rotation Length (days)	40	44	3	48	30	-18	37	59	22
Grazing allocation per day (ha)	2.7	2.5	-0.2	0.8	1.3	0.5	1.9	1.2	-0.7
Average time since last grazed (days)	30	36	5	29	28	-2	31	40	9
Leaf appearance rate (days per leaf)	11	11	-0	11	10	-1	12	12	0
Average Pasture Cover (kgDM/ha)	2587	2351	-236	2717	2676	-40	2516	2173	-343
Pasture Growth Rate (kgDM/ha/day)	77	22	-54	103	46	-57	63	2	-61
Post Grazing Biomass (kgDM/ha)	1760	1547	-213						
Nitrogen applied YTD (kgN/ha)	106	109	3	0	7	7	0	1	1

*Please note all pasture calculations detailed above are based on the current Grazed Milking Area

MILK PRODUCTION	Last Week	This Week	Variation
Average No. cows in milk (vat)	359	356	-3
Litres per cow	24.9	23.2	-1.7
% Fat	4.15	4.15	0.01
% Protein	3.17	3.24	0.07
MS/cow/day	1.83	1.70	-0.13
MS/ha/day	5.81	5.36	-0.45
BMCC	83	91	
Average Liveweight (kg)	497	497	
	Budget	To Date	Variation
Total Milk Production (kgMS)	57,929	59,095	102%
MS/ha YTD	517	574	56



Last 7 days					
Milkers Diet	kg DM	MJ ME	CP (%)	NDF (%)	\$/cow
Pasture Intake	12.2	11.0	18.5	50.2	0.0
Concentrates	5.0	12.8	12.3	16.5	0.0
Silage	1.8	11.0	15.0	49.0	0.0
Grazed forage	0.0	0.0	0.0	0.0	0.0
Other feeds	0.0	0.0	0.0	0.0	0.0
Total	19	218	16.5	41.2	0
Target		191	16-18	>33	0



Analysis			
Expected growth rate next 7 days (kgDM/ha/day)	28	Target Leaf Grazing Stage	2.5-3.0
Total Demand from Pasture (kgDM/ha/day)	38	Predicted APC 7 days time	2277
APC balance (kgDM/ha/day)	-11	Predicted APC Change	-74.3

Discussion

Average pasture cover has decreased significantly this week to 2351kgDM/ha. With only 12.4mm of rainfall over the past month, the dryland paddocks have all but stopped growing. To manage to the expected developing pasture deficit we will look to increase the per cow silage and grain feeding rates over the coming weeks and maximise cover and production on the irrigated ground by holding the rotation at 30 days (grazing at 3 leaf stage). We have been pregraze topping pastures that have turned reproductive, particularly on the irrigated ground to maintain quality. The irrigated area has been reduced slightly this season to 38.4ha with water reserves already starting to be depleted despite the commissioning of a second bore (yielding approximately 5 L/s) for dam fill. Per cow production continued to ease this week to 1.7kgMS/cow/day. We hope to hold this into the coming week and will consider increasing the concentrate in the ration address an energy deficit which is predicted through the feed wedge. R2 heifers were weighed this week and averaged 342kg which is on target.

2 December 2014

