

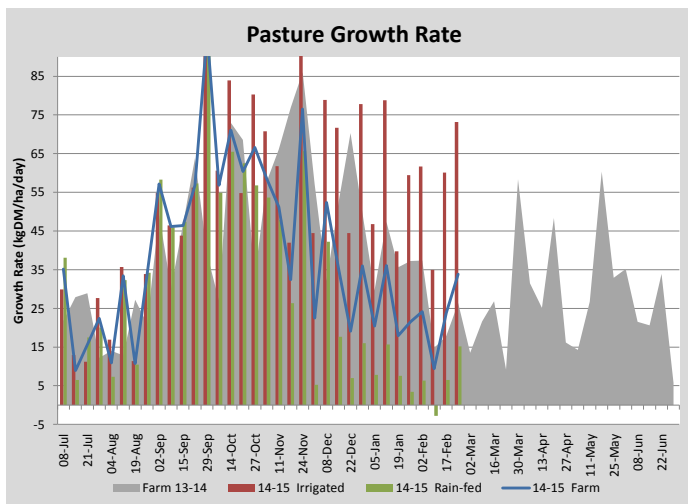
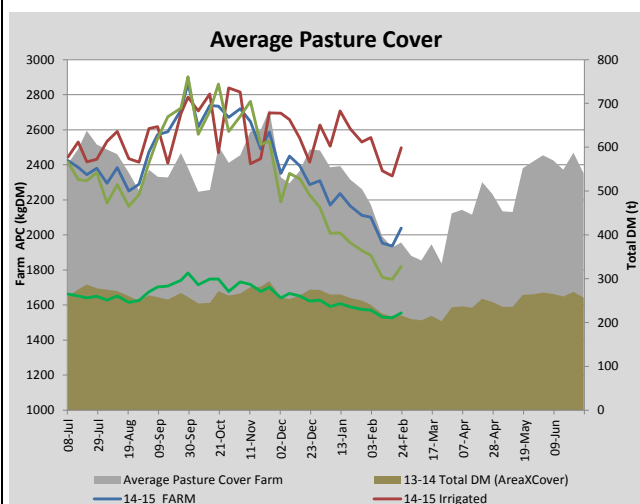
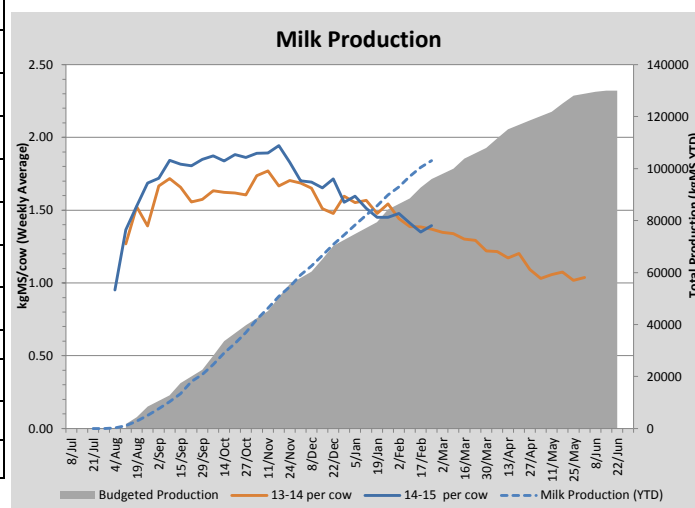
Key Summary Points

- 1** Average pasture cover held this week with good growth rates observed on the irrigated paddocks and some limited growth on the dryland paddocks after recent rainfall.
- 2** 36 cows were dried off late this week based on production. We plan to dry off another 30 this following week to bring the milking herd down to just under 300 cows.
- 3** Per cow production increased slightly this week due to low producing cows being dried-off.

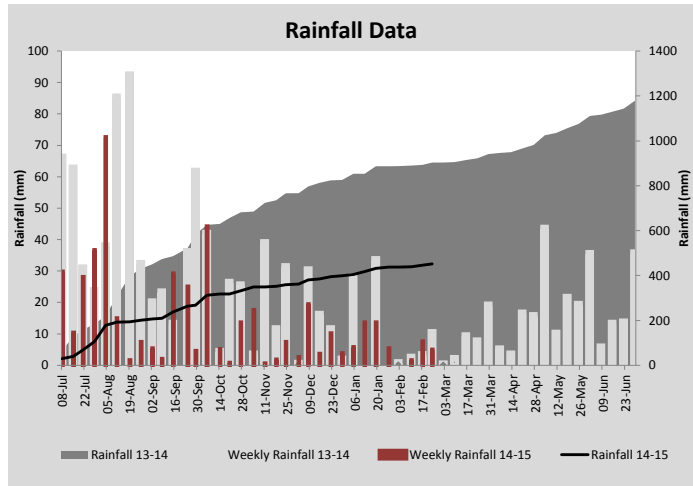
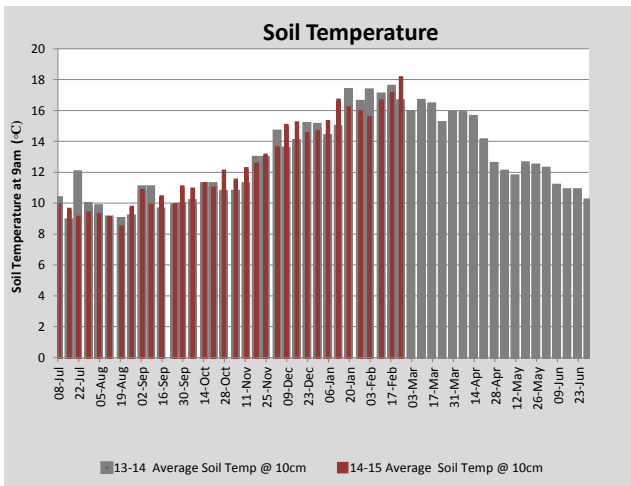
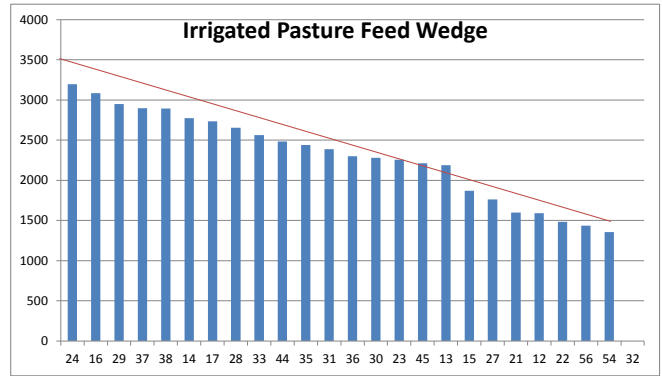
PASTURE INFORMATION	Farm			Irrigated			Rain-fed		
	Last Week	This Week	Variation	Last Week	This Week	Variation	Last Week	This Week	Variation
Grazed milking area (ha)	108.8	108.8	0.0	40.5	35.1	-5.4	68.3	73.7	5
Rotation Length (days)	73	73	0	35	35	0	147	147	0
Grazing allocation per day (ha)	1.5	1.5	0.0	1.0	1.0	0.0	0.5	0.5	0.0
Average time since last grazed (days)	47	61	14	77	35	-42	32	73	41
Leaf appearance rate (days per leaf)	15	17	1	10	10	0	18	20	2
Average Pasture Cover (kgDM/ha)	1936	2038	102	2336	2497	161	1746	1820	74
Pasture Growth Rate (kgDM/ha/day)	24	34	10	60	73	13	7	15	9
Post Grazing Biomass (kgDM/ha)	1538	1520	-18						
Nitrogen applied YTD (kgN/ha)	129	129	0	13	0	-13	0	0	0

*Please note all pasture calculations detailed above are based on the current Grazed Milking Area

MILK PRODUCTION	Last Week	This Week	Variation
Average No. cows in milk (vat)	358	322	-36
Litres per cow	16.9	17.5	0.6
% Fat	4.63	4.63	0.00
% Protein	3.35	3.26	-0.09
MS/cow/day	1.35	1.39	0.04
MS/ha/day	4.27	3.97	-0.30
BMCC	152	150	-1
Average Liveweight (kg)	510	533	23
	Budget	To Date	Variation
Total Milk Production (kgMS)	95,985	103,101	107%
MS/ha YTD	857	983	126



Last 7 days					
Milkers Diet	kg DM	MJ ME	CP (%)	NDF (%)	\$/cow
Pasture Intake	4.5	11.5	16.4	45.0	0.0
Concentrates	5.5	12.0	16.0	16.5	0.0
Silage	7.0	11.0	15.0	49.0	0.0
Grazed forage	0.0	0.0	0.0	0.0	0.0
Other feeds	0.0	0.0	0.0	0.0	0.0
Total	17	194.8	15.7	37.4	0
Target	191	16-18	>33	0	



Analysis			
Expected growth rate next 7 days (kgDM/ha/day)	20	Target Leaf Grazing Stage	2.5-3.0
Total Demand from Pasture (kgDM/ha/day)	14	Predicted APC 7 days time	2079
APC balance (kgDM/ha/day)	6	Predicted APC Change	40.3

Discussion

Irrigated pasture growth rates increased to 80 kg DM/ha this week and this, in addition to drying-off some cows, has helped to maintain the average pasture cover. The majority of the cows that have been dried-off have been agisted off-farm to reduce feed demand. The rising 2 year-olds have also been agisted off-farm. A further 40 lower producing cows will be dried-off in the next week to reduce feed demand to a sustainable level and ensure that the feed being supplied to the milking herd is being used efficiently.

23 February 2015

