

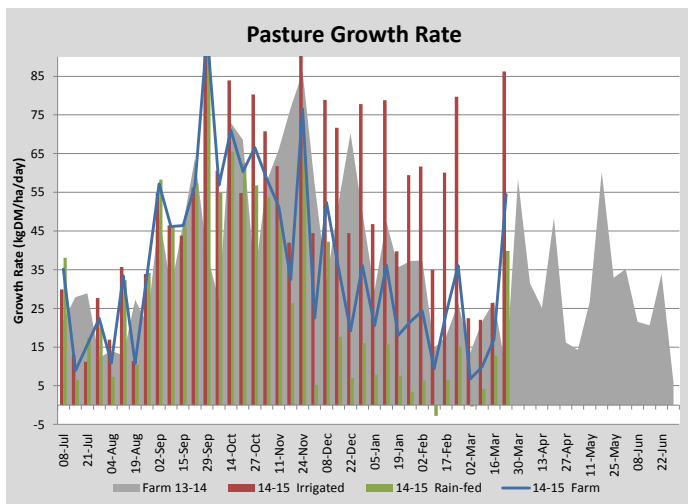
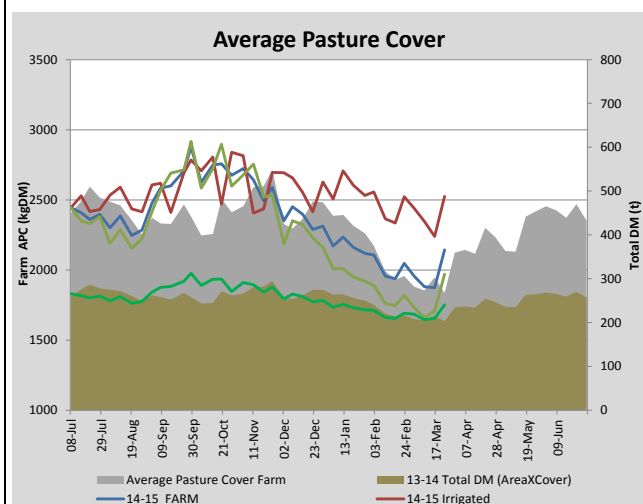
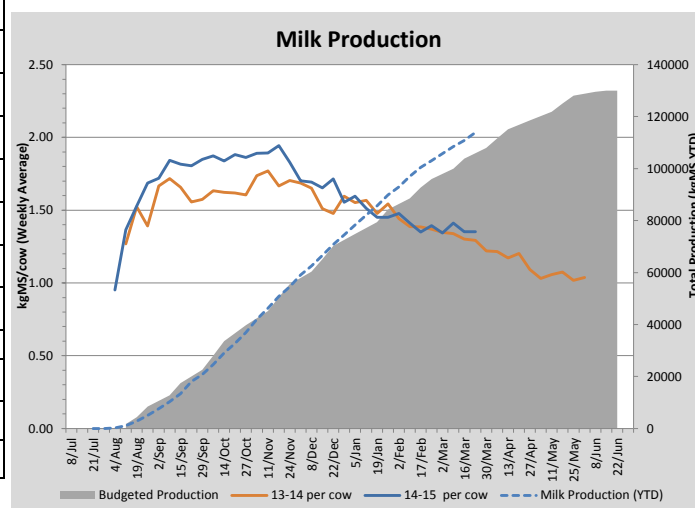
### Key Summary Points

- 1 30 mm of rain over the past week has seen an improvement in pasture growth rates.
- 2 The dryland paddocks have responded well to the rains and are showing good signs of recovery from the dry conditions over summer.
- 3 The new grass sown in the More Milk for Forage areas (Base ryegrass) has germinated and is also responding well to the recent rain.

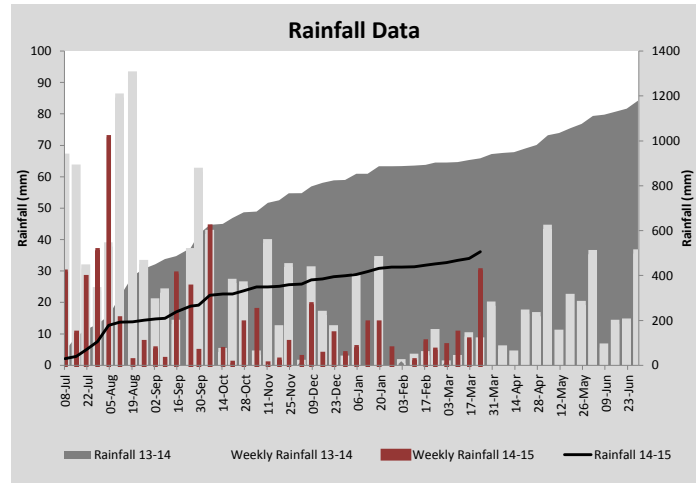
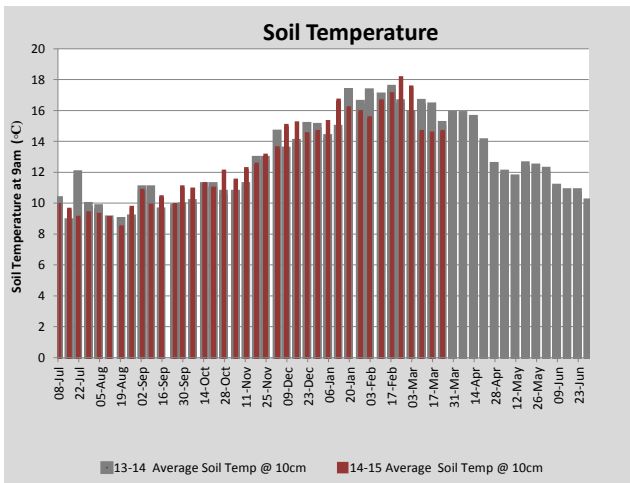
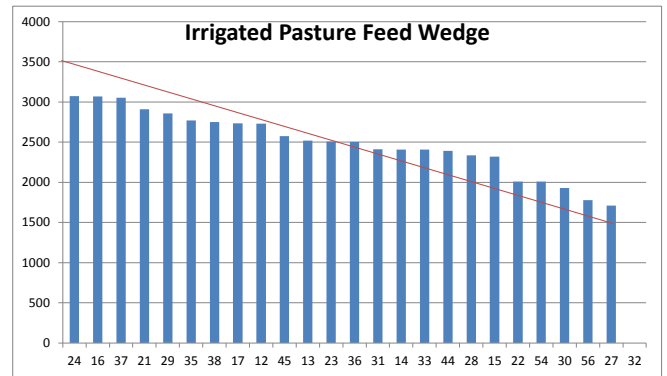
PASTURE INFORMATION	Farm			Irrigated			Rain-fed		
	Last Week	This Week	Variation	Last Week	This Week	Variation	Last Week	This Week	Variation
Grazed milking area (ha)	111.9	111.9	0.0	40.5	35.1	-5.4	71.4	76.8	5
Rotation Length (days)	66	47	-19	35	35	0	110	55	-55
Grazing allocation per day (ha)	1.7	2.4	0.7	1.0	1.0	0.0	0.7	1.4	0.7
Average time since last grazed (days)	66	63	-3	36	36	0	80	75	-5
Leaf appearance rate (days per leaf)	20	19	-1	12	12	0	23	22	-1
Average Pasture Cover (kgDM/ha)	1874	2143	269	2240	2523	283	1707	1969	262
Pasture Growth Rate (kgDM/ha/day)	17	54	37	26	86	60	13	40	27
Post Grazing Biomass (kgDM/ha)	1450	1500	50						
Nitrogen applied YTD (kgN/ha)	137	137	0	13	0	-13	0	0	0

\*Please note all pasture calculations detailed above are based on the current Grazed Milking Area

MILK PRODUCTION	Last Week	This Week	Variation
Average No. cows in milk (vat)	282	282	0
Litres per cow	16.2	16.3	0.1
% Fat	4.84	4.73	-0.11
% Protein	3.59	3.57	-0.02
MS/cow/day	1.35	1.35	0.00
MS/ha/day	3.37	3.38	0.00
BMCC	167	140	-28
Average Liveweight (kg)	537	533	-4
	Budget	To Date	Variation
Total Milk Production (kgMS)	105,905	113,883	108%
MS/ha YTD	946	1057	111



Last 7 days					
Milkers Diet	kg DM	MJ ME	CP (%)	NDF (%)	\$/cow
Pasture Intake	8.8	11.5	16.4	45.0	0.0
Concentrates	5.5	12.0	16.0	16.5	0.0
Silage	2.7	11.0	15.0	49.0	0.0
Grazed forage	0.0	0.0	0.0	0.0	0.0
Other feeds	0.0	0.0	0.0	0.0	0.0
<b>Total</b>	<b>17</b>	<b>196.9</b>	<b>16.0</b>	<b>36.4</b>	<b>0</b>
<b>Target</b>		<b>191</b>	<b>16-18</b>	<b>&gt;33</b>	<b>0</b>



Analysis			
Expected growth rate next 7 days (kgDM/ha/day)	29	Target Leaf Grazing Stage	2.5-3.0
Total Demand from Pasture (kgDM/ha/day)	15	Predicted APC 7 days time	2239
APC balance (kgDM/ha/day)	14	Predicted APC Change	96.0

## Discussion

Pasture covers and growth improved significantly over the past week due to 30 mm rain. However such large increases should be viewed with caution and a better guide is to do a rolling average of pasture growth rates rather than make major management decisions based on sudden changes such as seen in this report. The Base ryegrass sown on March 13 has germinated well. Milk production is holding at a steady level, around 16 litres per cow. It is expected that as the dryland growth rates continue to increase we will be able to reduce the amount of silage in the diet by increasing the amount of fresh pasture provided. This will be done without excessively speeding up the dryland rotation which is currently at 75 days. The irrigated pasture is on a 35 day round.

# 23 March 2015

