

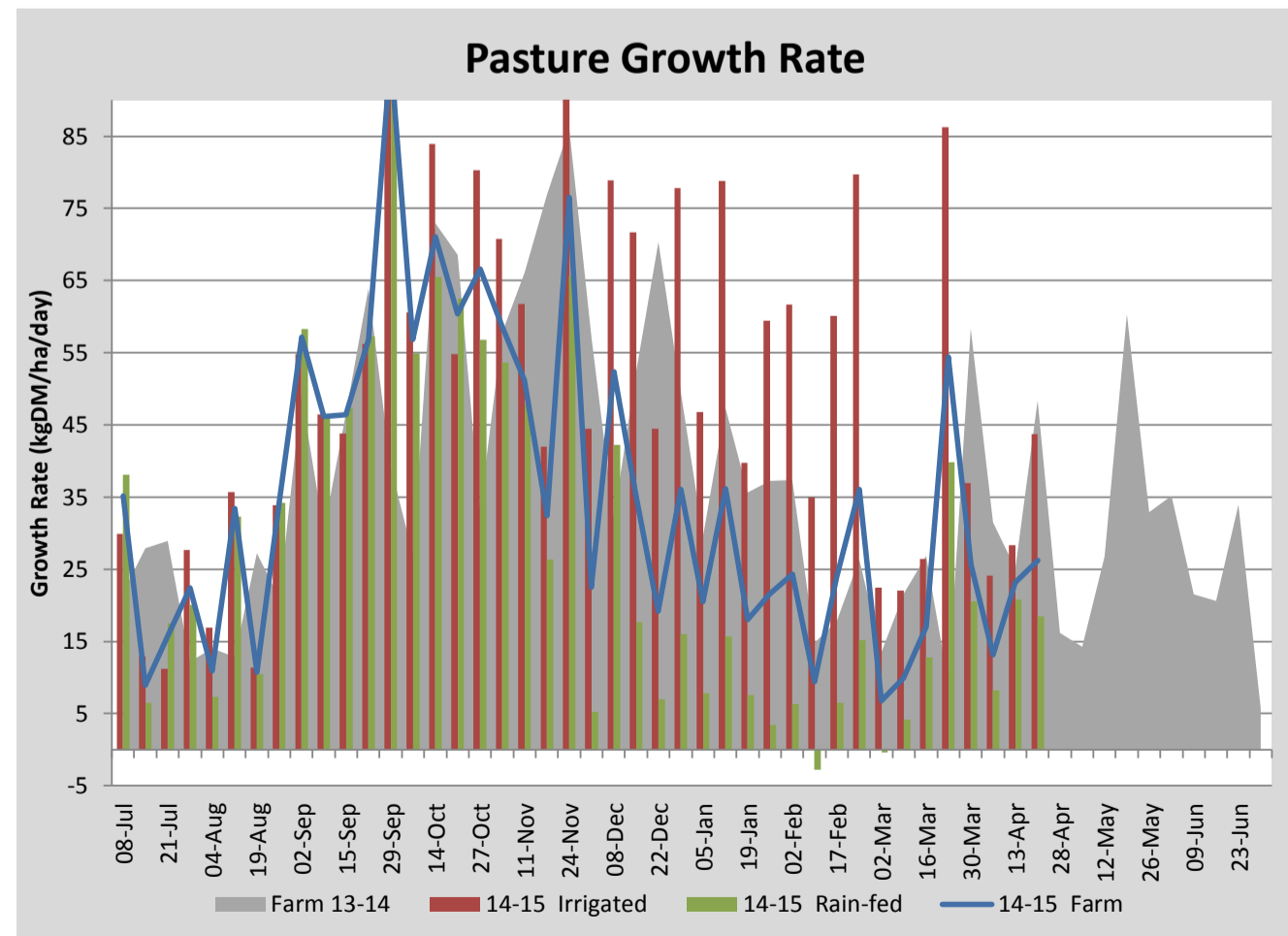
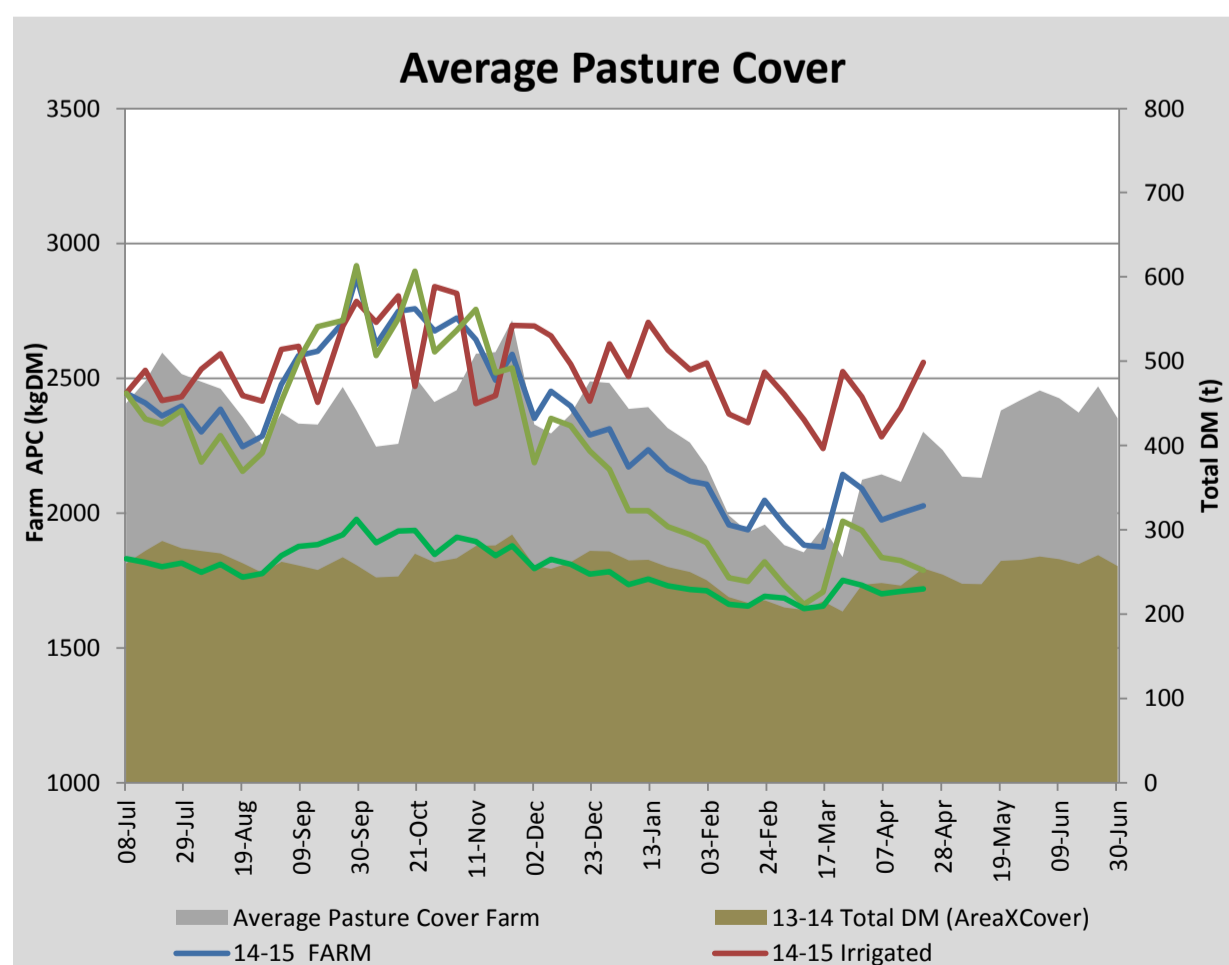
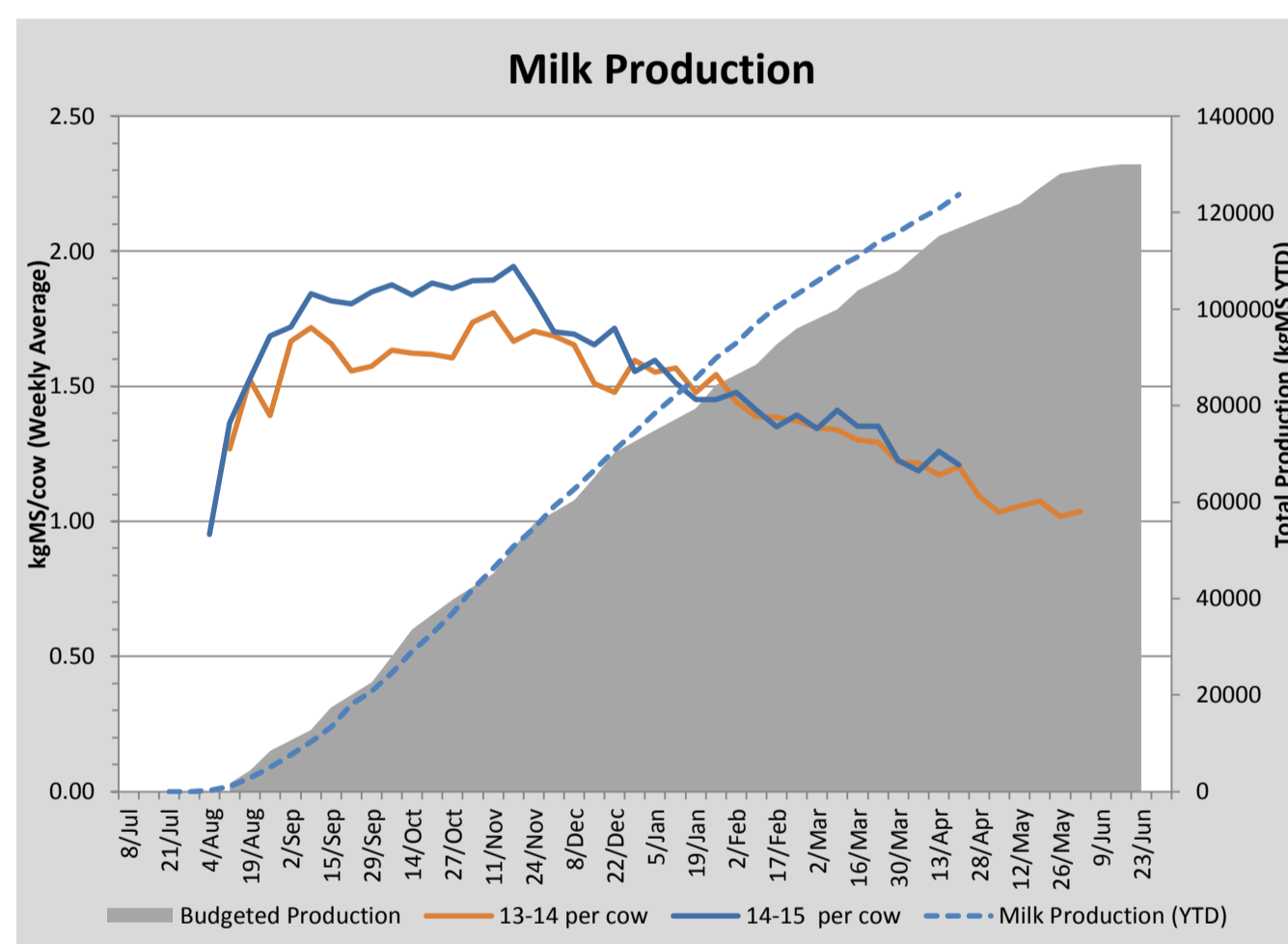
Key Summary Points

- 1** Average pasture cover has increased this week to 2025kgDM/ha.
- 2** We are looking to preserve remaining silage reserves for spring by selling off all late calving cows (18).
- 3** Parasite challenge in the young stock is expected to increase over to coming weeks with rain forecast. R1 and R2 stock will be drenched this week.

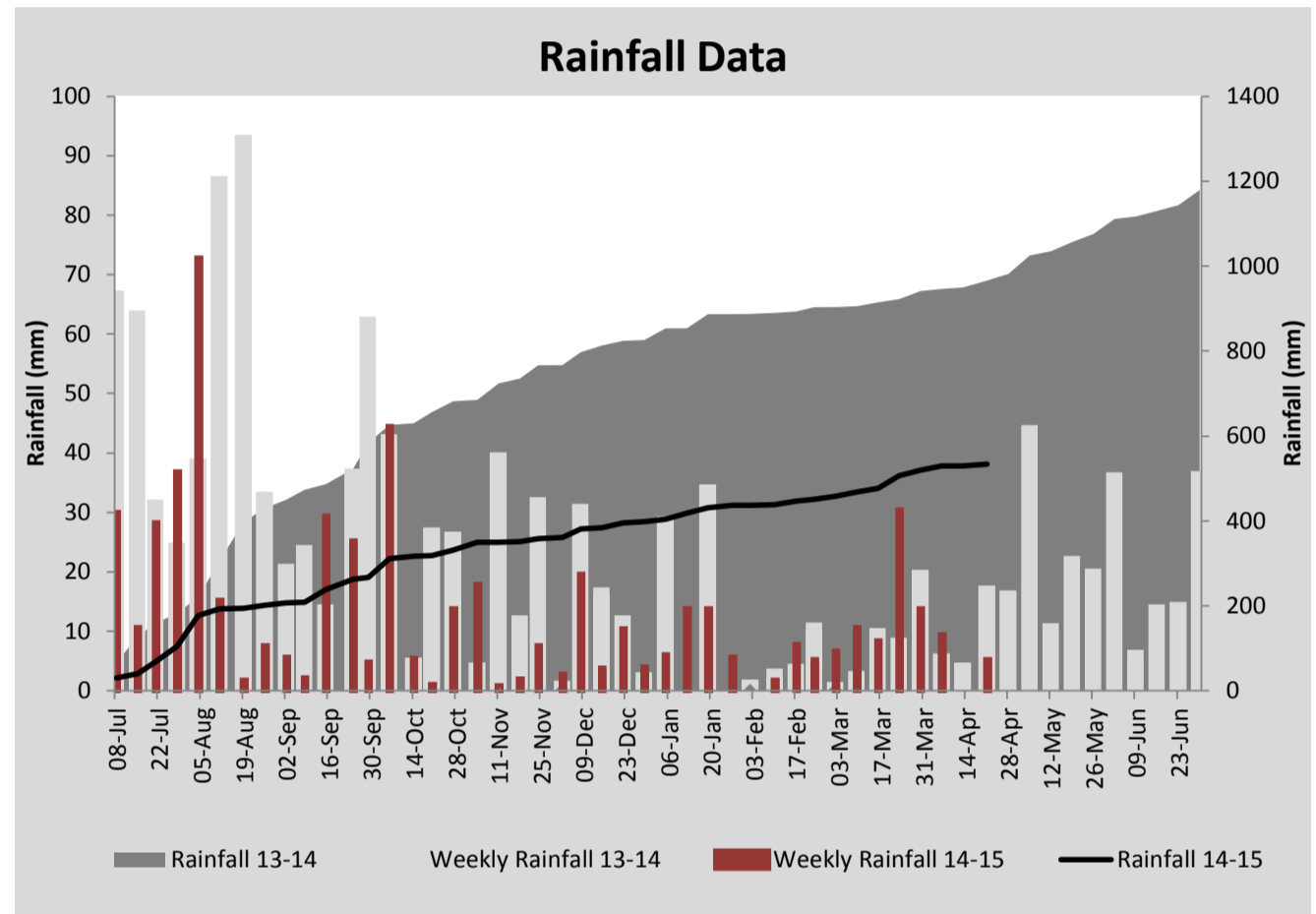
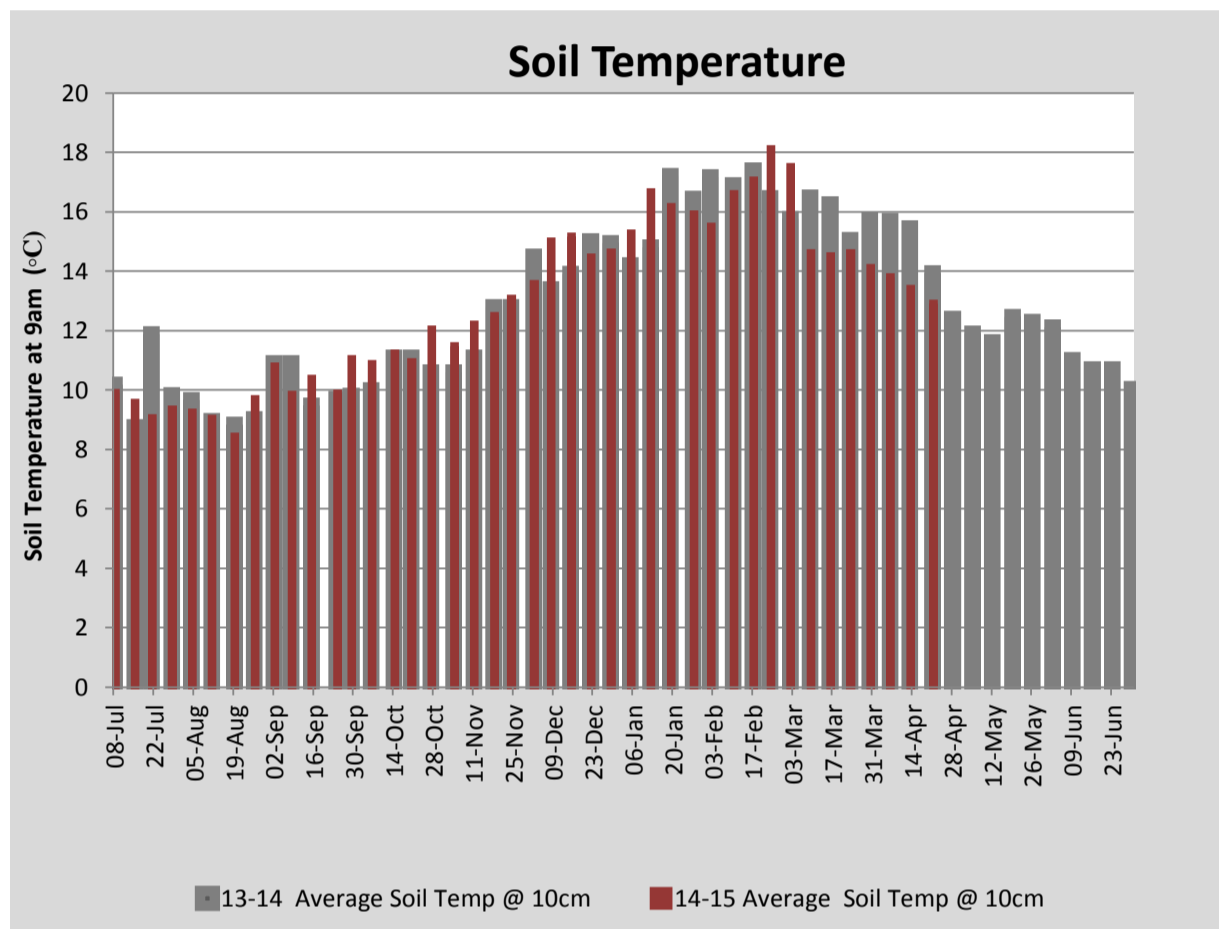
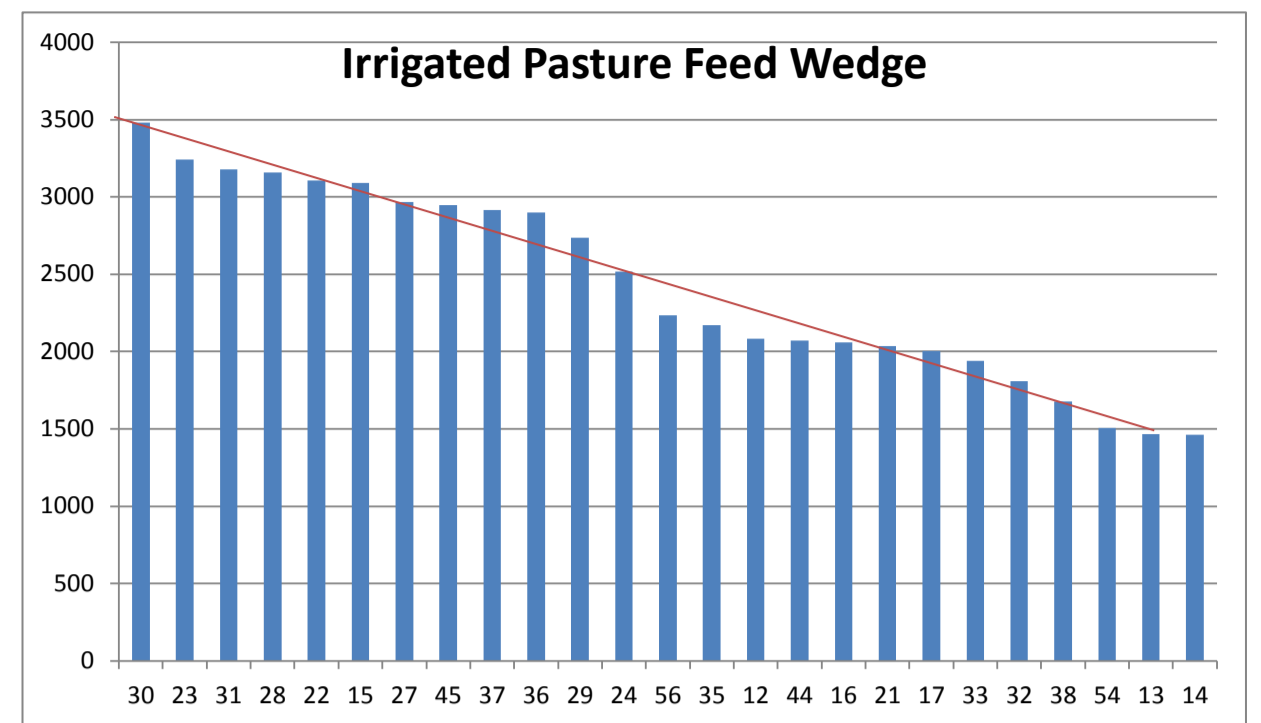
PASTURE INFORMATION	Farm			Irrigated			Rain-fed		
	Last Week	This Week	Variation	Last Week	This Week	Variation	Last Week	This Week	Variation
Grazed milking area (ha)	113.6	113.6	0.0	40.5	35.1	-5.4	73.1	78.4	5
Rotation Length (days)	49	57	7	39	50	11	56	60	4
Grazing allocation per day (ha)	2.3	2.0	-0.3	0.9	0.7	-0.2	1.4	1.3	-0.1
Average time since last grazed (days)	55	62	7	38	42	4	63	71	8
Leaf appearance rate (days per leaf)	17	17	0	14	14	0	18	18	0
Average Pasture Cover (kgDM/ha)	1998	2025	27	2388	2558	170	1824	1787	-36
Pasture Growth Rate (kgDM/ha/day)	23	26	3	28	44	15	21	18	-2
Post Grazing Biomass (kgDM/ha)	1470	1435	-35						
Nitrogen applied YTD (kgN/ha)	143	148	6	0	16	16	0	1	1

*Please note all pasture calculations detailed above are based on the current Grazed Milking Area

MILK PRODUCTION	Last Week	This Week	Variation
Average No. cows in milk (vat)	280	280	0
Litres per cow	14.9	14.1	-0.8
% Fat	4.81	4.86	0.05
% Protein	3.64	3.79	0.15
MS/cow/day	1.26	1.21	-0.05
MS/ha/day	3.12	3.00	-0.12
BMCC	173	149	-24
Average Liveweight (kg)	534	538	4
	Budget	To Date	Variation
Total Milk Production (kgMS)	116,844	123,796	106%
MS/ha YTD	1043	1129	85



Last 7 days					
Milkers Diet	kg DM	MJ ME	CP (%)	NDF (%)	\$/cow
Pasture Intake	9.4	13.1	19.4	46.3	0.0
Concentrates	5.0	12.0	16.0	16.5	0.0
Silage	2.7	11.0	9.5	49.0	0.0
Grazed forage	0.0	0.0	0.0	0.0	0.0
Other feeds	0.0	0.0	0.0	0.0	0.0
Total	17	211.6	16.9	38.0	0
Target		191	16-18	>33	0



Analysis			
Expected growth rate next 7 days (kgDM/ha/day)	21	Target Leaf Grazing Stage	2.5-3.0
Total Demand from Pasture (kgDM/ha/day)	21	Predicted APC 7 days time	2030
APC balance (kgDM/ha/day)	1	Predicted APC Change	4.2

Discussion

Average pasture cover built slightly this week to 2025kgDM/ha with good growth observed on the irrigated paddocks. Growth on the rain fed paddocks has been limited by dry conditions. Renovated pastures have established well. With a tight calving pattern expected this coming spring we will aim to preserve remaining silage reserves to help manage early season demand. To achieve this we will look to reduce feed demand in the coming weeks by selling off all late cows (18). Parasite challenge is expected to increase with rain forecast over the coming weeks. To manage this all R1 and R2 stock will be drenched this coming week. R1s will be sent off farm to graze crop (annual ryegrass) on agistment. This will help to both boost live weight gain and build cover on the run-off for the dry period.

21 April 2015

