

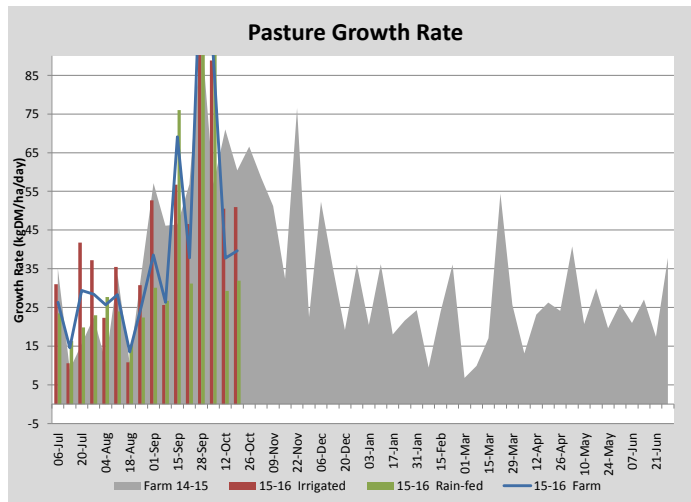
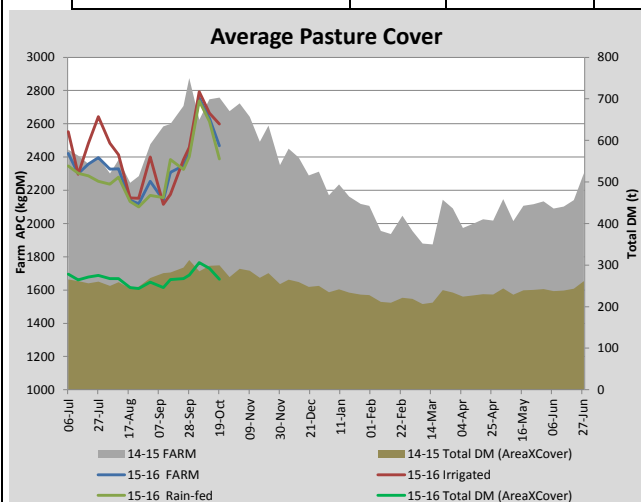
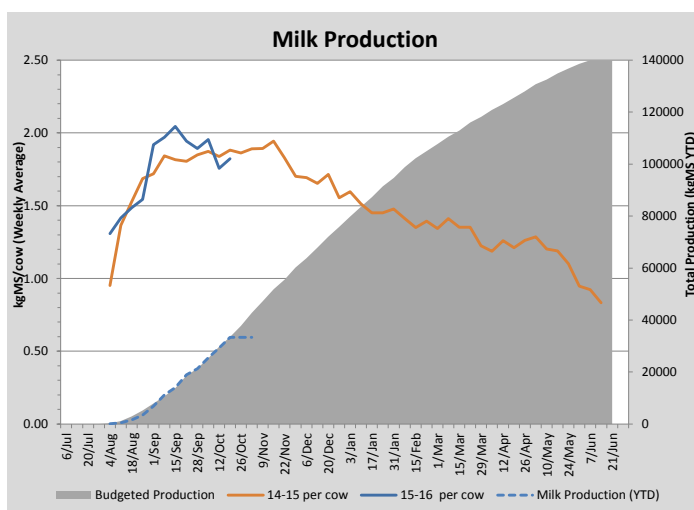
Key Summary Points

- 1** Despite the dry conditions, average dryland pasture growth rates have held, although it appears that there is little regrowth after grazing and most of the growth is coming from paddocks near to grazing
- 2** Irrigated pasture growth rates have remained the same as the previous week
- 3** Mating of the milking herd has started and as they have been synchronised we expect a busy week ahead

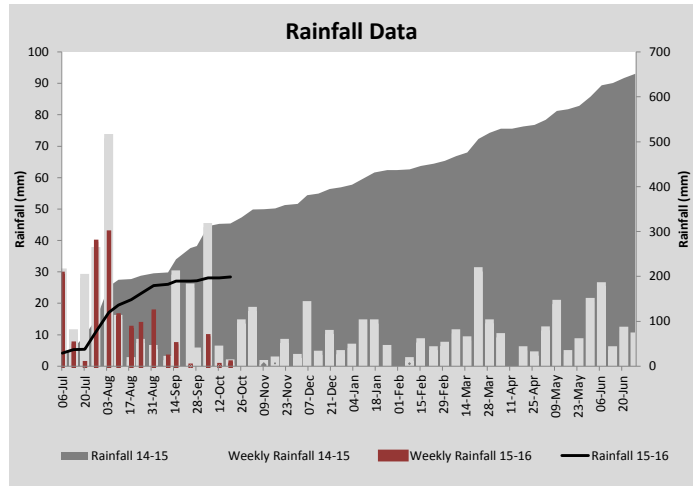
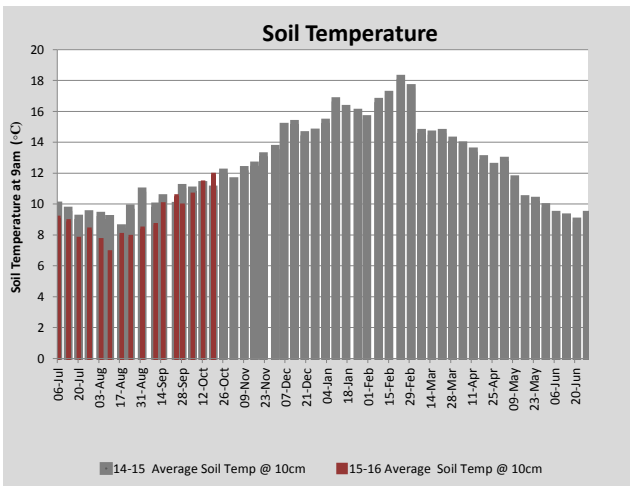
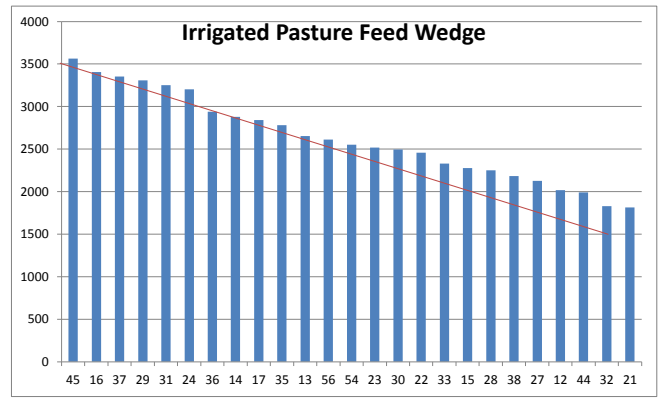
PASTURE INFORMATION	Farm			Irrigated			Rain-fed		
	Last Week	This Week	Variation	Last Week	This Week	Variation	Last Week	This Week	Variation
Grazed milking area (ha)	110.9	107.6	-3.2	42.2	40.1	-2.1	65.4	67.5	2
Rotation Length (days)	35	35	0	33	40	7	35	32	-3
Grazing allocation per day (ha)	3.2	3.1	-0.1	1.2	1.0	-0.2	2.0	2.1	0.1
Average time since last grazed (days)	31	25	-6	30	18	-12	32	29	-3
Leaf appearance rate (days per leaf)	11	11	0	11	11	0	11	11	0
Average Pasture Cover (kgDM/ha)	2633	2467	-165	2665	2598	-66	2614	2390	-225
Pasture Growth Rate (kgDM/ha/day)	38	40	2	51	51	0	29	32	3
Post Grazing Biomass (kgDM/ha)	1700	1700	0						
Nitrogen applied YTD (kgN/ha)	39	45	6	0	8	8	0	4	4

*Please note all pasture calculations detailed above are based on the current Grazed Milking Area

MILK PRODUCTION	Last Week	This Week	Variation
Average No. cows in milk (vat)	358	360	2
Litres per cow	23.8	25.2	1.4
% Fat	4.20	4.10	-0.10
% Protein	3.14	3.13	-0.01
MS/cow/day	1.76	1.82	0.07
MS/ha/day	5.57	5.81	0.24
BMCC	146,429	159,000	12,571
Average Liveweight (kg)	0	0	0
	Budget	To Date	Variation
Total Milk Production (kgMS)	33,479	33,398	100%
MS/ha YTD	294	322	29



Last 7 days					
Milkers Diet	kg DM	MJ ME	CP (%)	NDF (%)	\$/cow
Pasture Intake	15.0	13.2	28.0	46.0	0.0
Concentrates	3.0	12.5	16.0	16.5	0.0
Silage	0.0	0.0	0.0	0.0	0.0
Grazed forage	0.0	0.0	0.0	0.0	0.0
Other feeds	0.0	0.0	0.0	0.0	0.0
Total	18	235.5	26.0	41.1	0
Target		191	16-18	>33	0

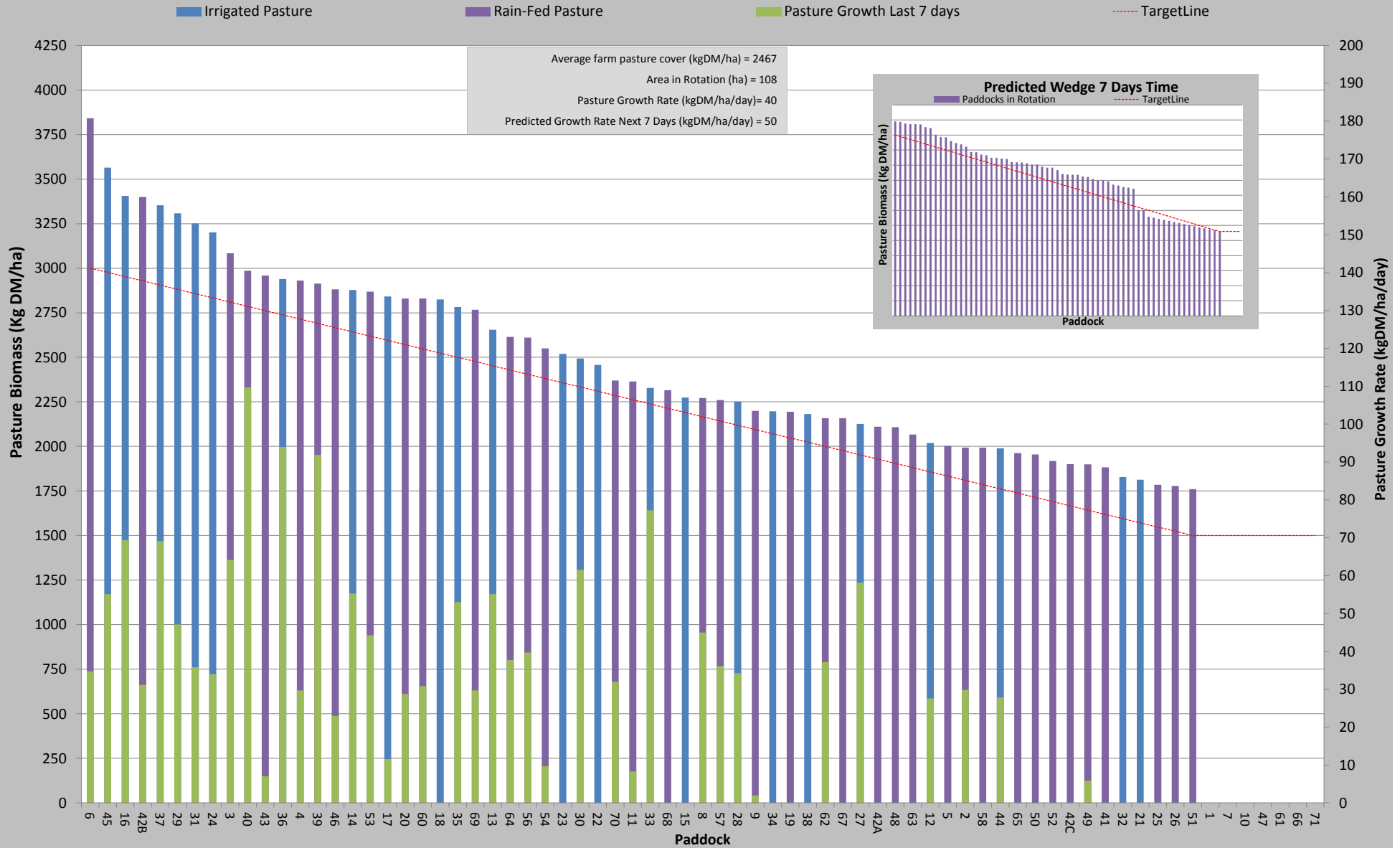


Analysis			
Expected growth rate next 7 days (kgDM/ha/day)	37	Target Leaf Grazing Stage	2.5-3.0
Total Demand from Pasture (kgDM/ha/day)	50	Predicted APC 7 days time	2374
APC balance (kgDM/ha/day)	-13	Predicted APC Change	-93.8

Discussion

It appears regrowth on the dryland areas has slowed, and the drying banks are becoming very obvious. The sudden drop in APC is a result of 10.6 ha of milking platform having been harvested for silage. The brassicas sown have struck well and are being monitored for cut-worms, if cutworms are detected the crops will be sprayed with a suitable insecticide. Mating has commenced on the milking herd and as the herd is under a synchronisation program it is expected that the next week will have a high proportion of the herd mated. Nitrogen is now only being applied to irrigated areas as it has become too dry to expect a response from dryland areas. This will be closely monitored and if substantial rains occur in the near future nitrogen applications on the dryland will recommence.

19 October 2015



It appears regrowth on the dryland areas has slowed, and the drying banks are becoming very obvious. The sudden drop in APC is a result of 10.6 ha of milking platform having been harvested for silage. The brassicas sown have struck well and are being monitored for cut-worms, if cutworms are detected the cr

ops will be sprayed with a suitable insecticide. Mating has commenced on the milking herd and as the herd is under a synchronisation program it is expected that the next week will have a high proportion of the herd mated. Nitrogen is now only being applied to irrigated areas as it has become too dry to expect a response from drylar

nd areas. This will be closely monitored and if substantial rains occur in the near future nitrogen applications on the dryland will recommence.