

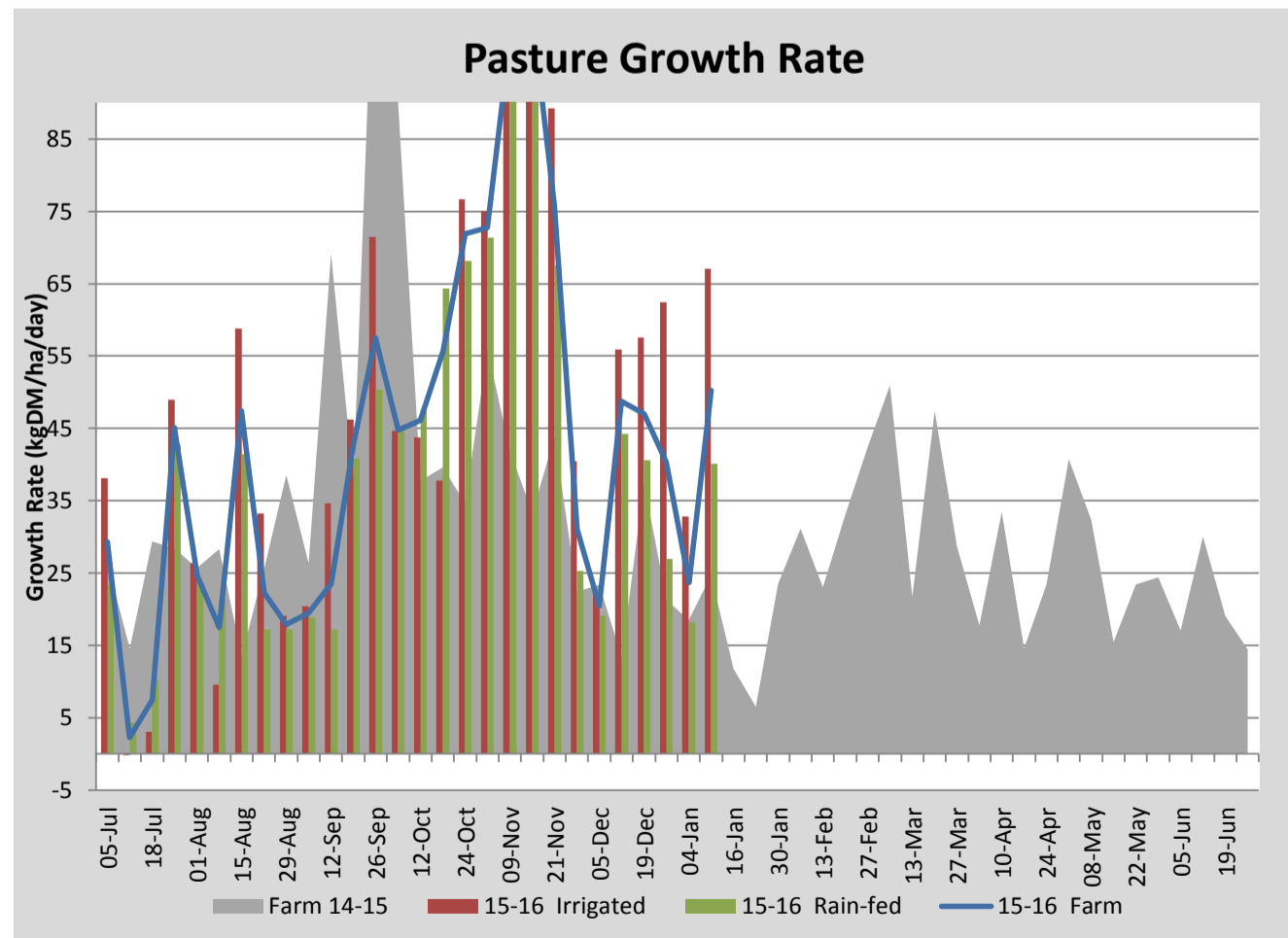
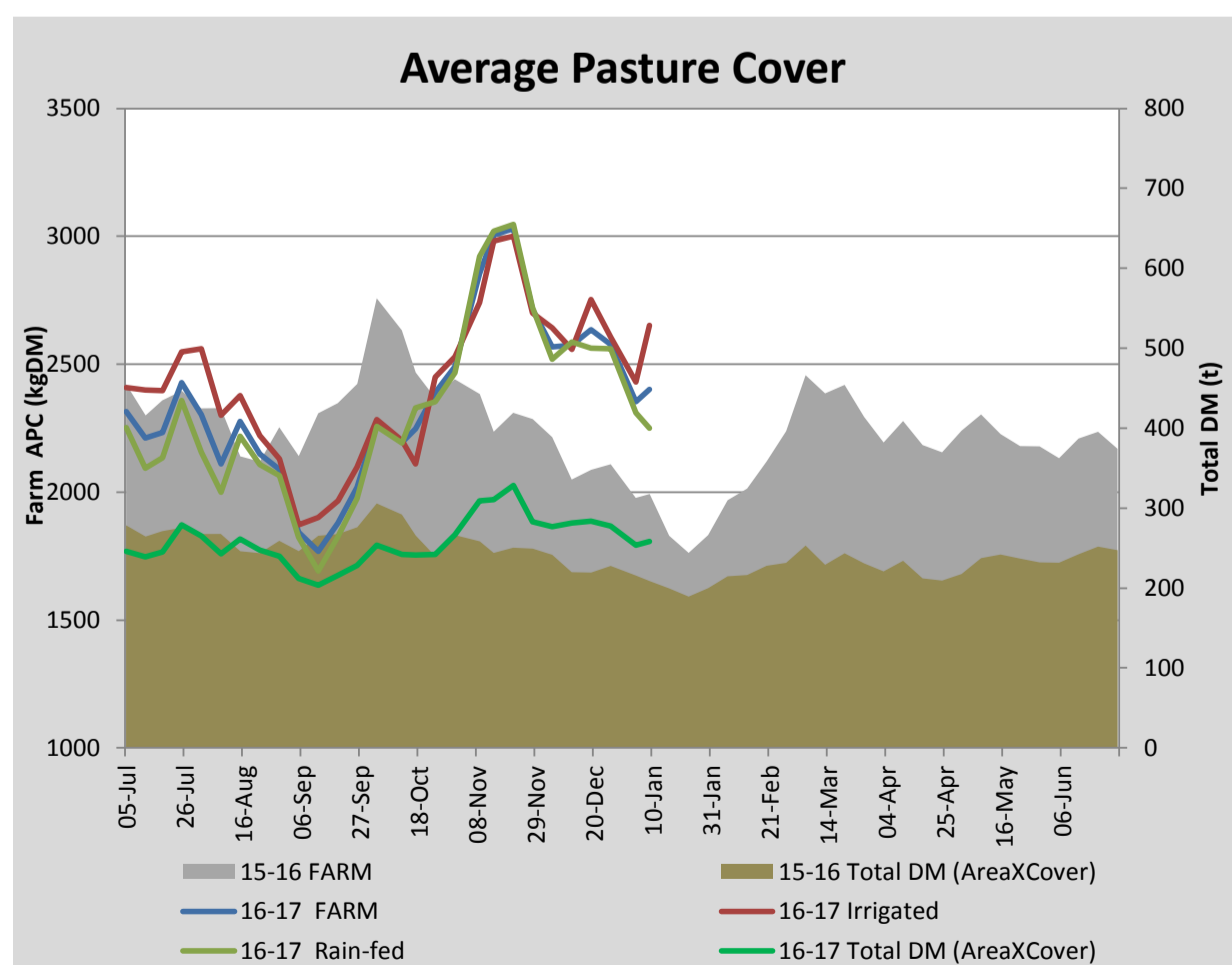
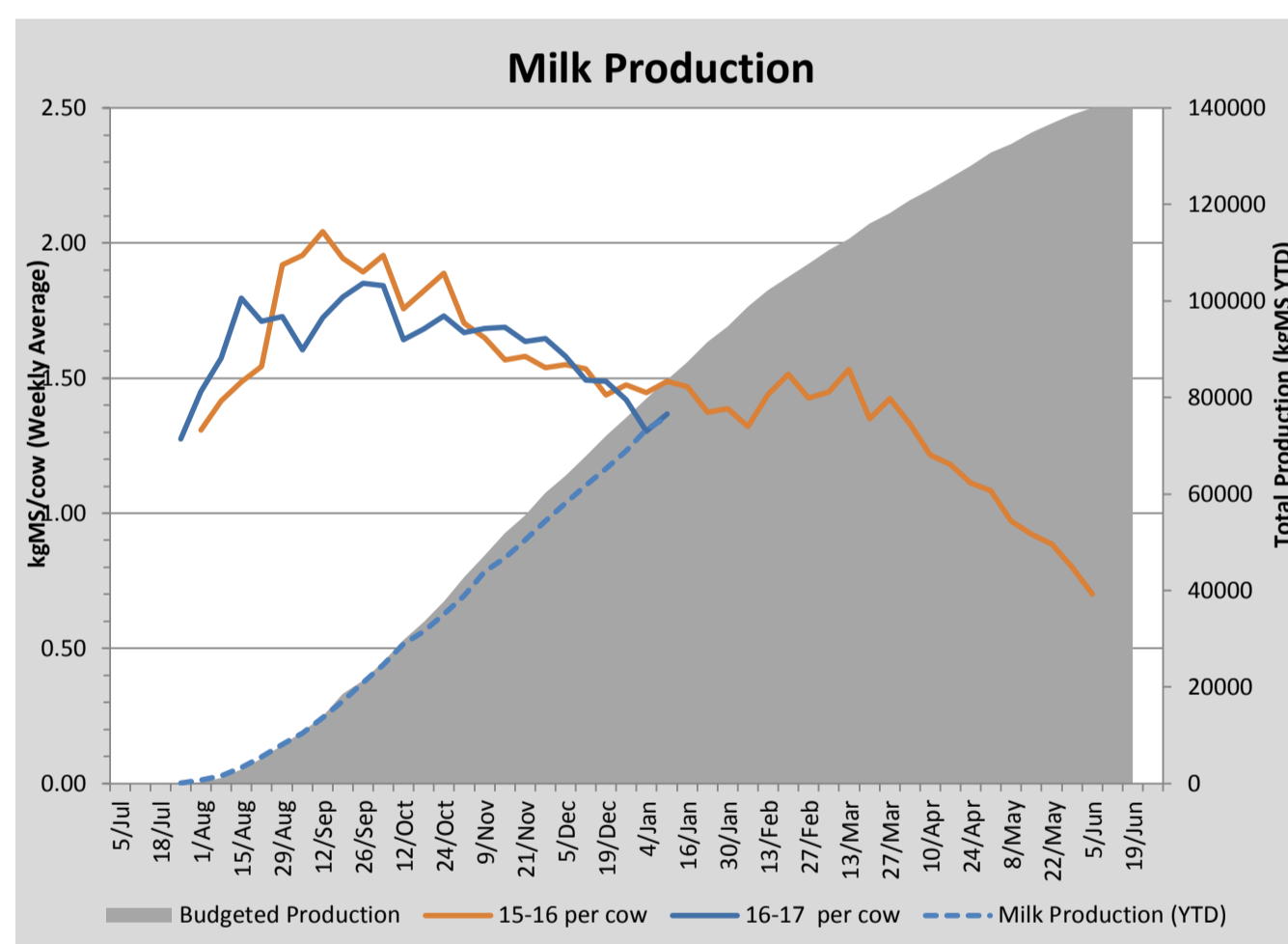
## Key Summary Points

- 1** Average pasture cover increased this week with good growth rates observed across the milking platform
- 2** Per cow milk solid production lifted slightly this week with improving pasture quality
- 3** Key focus for the coming week is to identify paddocks to be dropped for silage and to set up a feed wedge for an upcoming grazing trial to be conducted on 14.4ha of the irrigated portion of the platform.

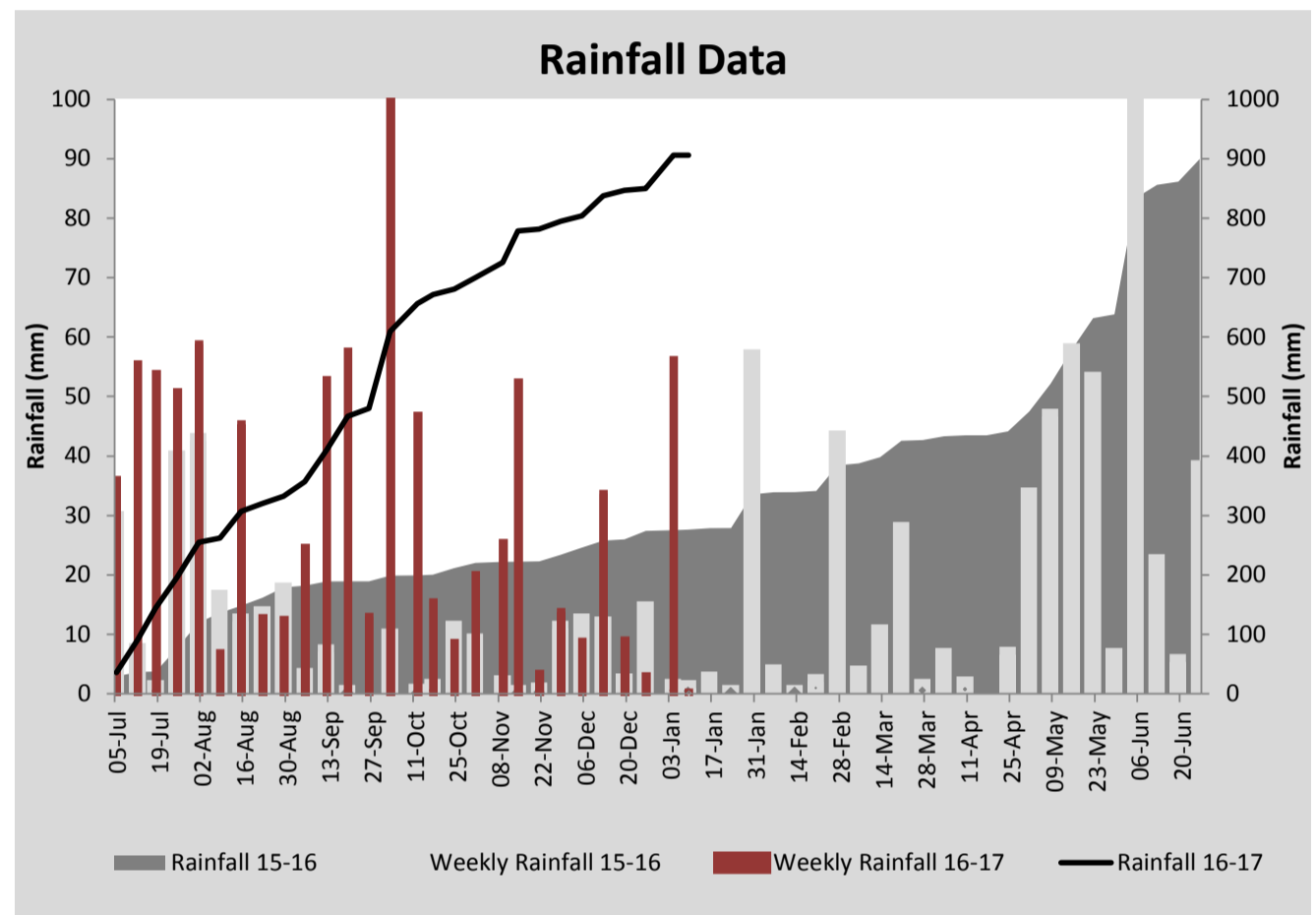
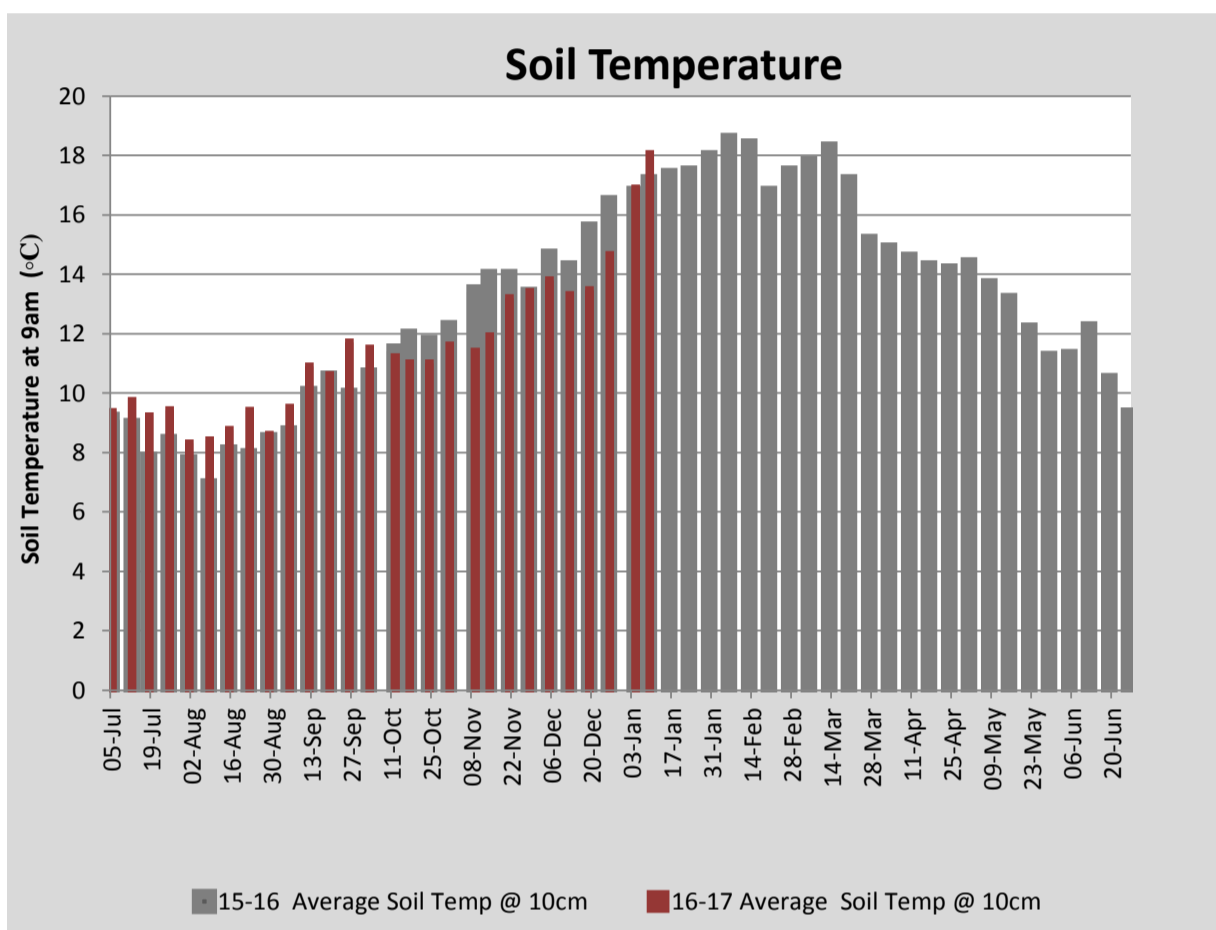
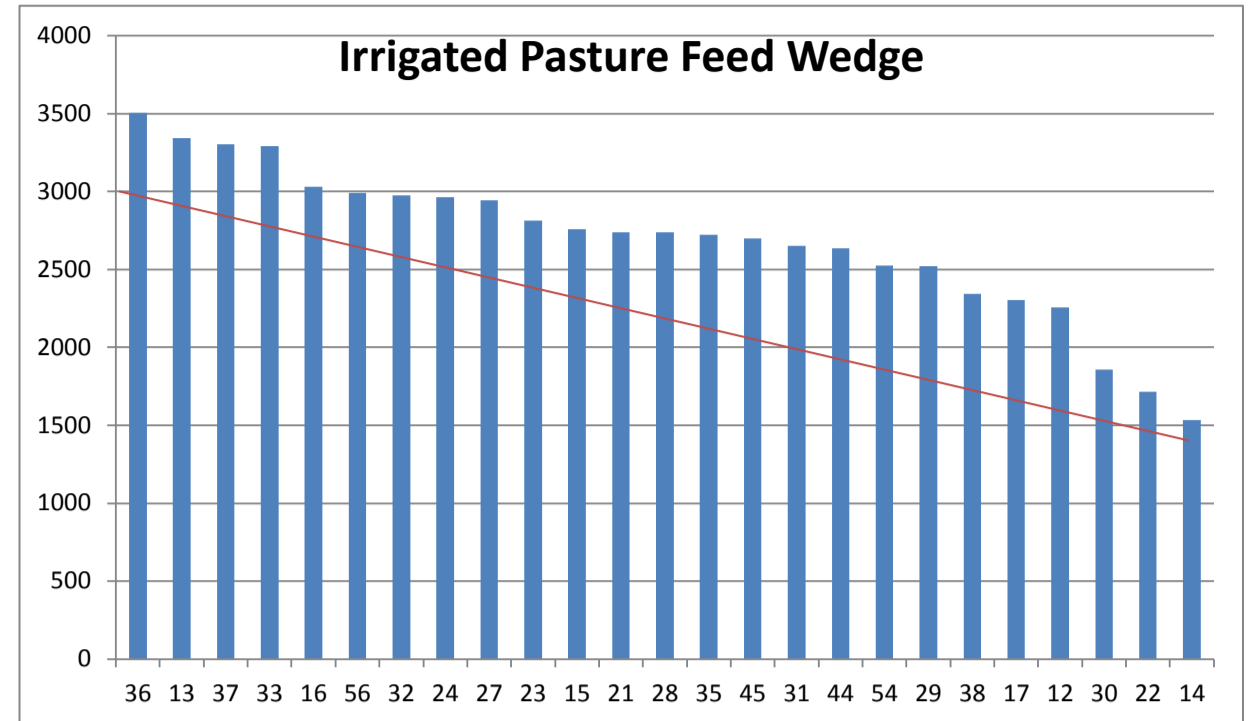
PASTURE INFORMATION	Farm			Irrigated			Rain-fed		
	Last Week	This Week	Variation	Last Week	This Week	Variation	Last Week	This Week	Variation
Grazed milking area (ha)	107.6	107.6	0.0	42.2	40.5	-1.7	65.4	67.1	2
Rotation Length (days)	40	28	-13	27	72	45	57	20	-37
Grazing allocation per day (ha)	2.7	3.9	1.2	1.5	0.6	-0.9	1.2	3.3	2.2
Average time since last grazed (days)	44	30	-14	39	23	-16	47	35	-12
Leaf appearance rate (days per leaf)	10	10	0	10	10	0	10	10	0
Average Pasture Cover (kgDM/ha)	2354	2401	47	2429	2653	223	2309	2249	-60
Pasture Growth Rate (kgDM/ha/day)	24	50	27	33	67	34	18	40	22
Post Grazing Biomass (kgDM/ha)	1715	1653	-62						
Nitrogen applied YTD (kgN/ha)	147	147	0	24	0	-24	4	0	-4

\*Please note all pasture calculations detailed above are based on the current Grazed Milking Area

MILK PRODUCTION	Last Week	This Week	Variation
Average No. cows in milk (vat)	350	349	-1
Litres per cow	16.7	17.3	0.6
% Fat	4.48	4.52	0.04
% Protein	3.34	3.36	0.02
MS/cow/day	1.30	1.37	0.06
MS/ha/day	4.04	4.22	0.19
BMCC	101,571	120,429	18,857
Average Liveweight (kg)	0	0	0
	Budget	To Date	Variation
Total Milk Production (kgMS)	83,611	75,958	91%
MS/ha YTD	733	728	99%



Last 7 days					
Milkers Diet	kg DM	MJ ME	CP (%)	NDF (%)	\$/cow
Pasture Intake	13.8	0.0	0.0	0.0	0.0
Concentrates	2.5	12.9	45.6	20.3	0.0
Silage	0.8	0.0	0.0	0.0	0.0
Grazed forage	0.0	0.0	0.0	0.0	0.0
Other feeds	0.0	0.0	0.0	0.0	0.0
<b>Total</b>	<b>17</b>				<b>0</b>
<b>Target</b>			<b>16-18</b>	<b>&gt;33</b>	<b>0</b>



Analysis			
Expected growth rate next 7 days (kgDM/ha/day)	48	Target Leaf Grazing Stage	2.5-3.0
Total Demand from Pasture (kgDM/ha/day)	45	Predicted APC 7 days time	2426
APC balance (kgDM/ha/day)	4	Predicted APC Change	25.4

## Discussion

Average pasture cover increased this week to 2401kgDM/ha with good growth observed across the milking platform. With current growth rates matching demand we expect cover to hold into the coming week with forecast rain expected to maintain or improve growth rates on the dryland paddocks. We have dropped a couple of paddocks at the top end of the feed wedge for silage to regain feed quality in subsequent grazing and to prevent a surplus from developing. Silage, while not needed to fill a feed deficit, is being utilised to balance the available pasture in smaller paddocks. The grain feeding rate has been reduced to 2.5kgDM/cow/day.

# 9 January 2017

