

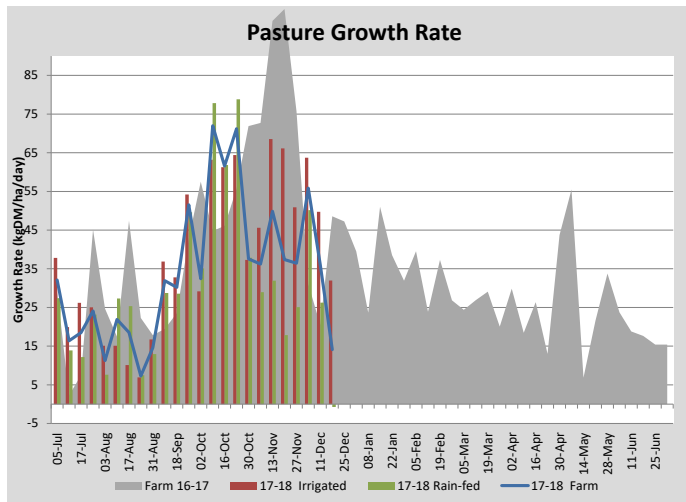
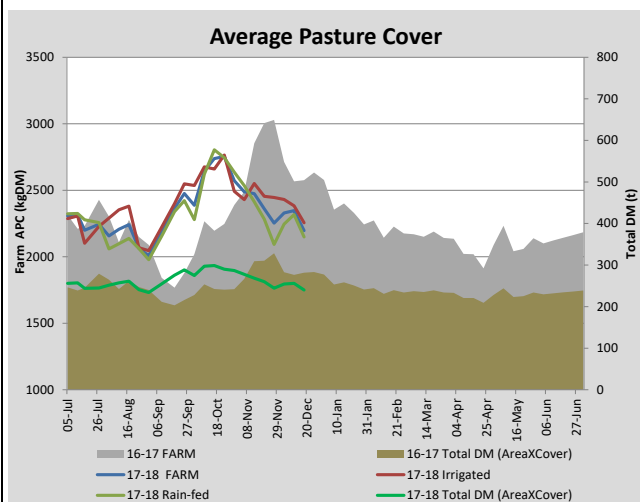
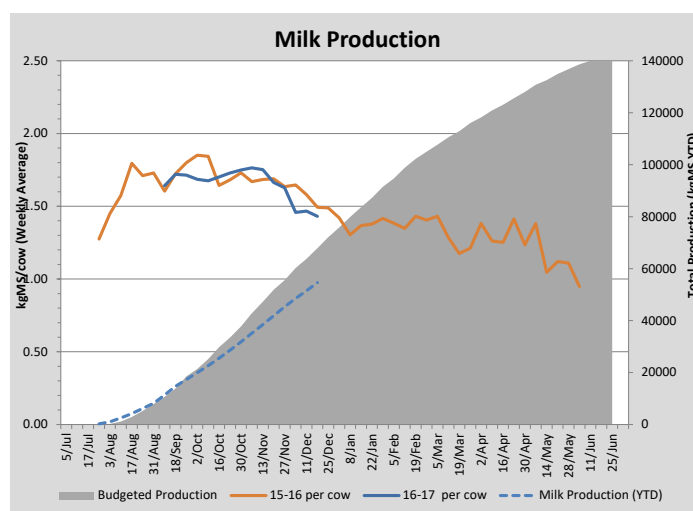
Key Summary Points

- 1** Pasture growth on the rainfed areas of the farm is now very low which has a large impact on the overall farm growth rates.
- 2** Insect and thistle spraying has been undertaken.
- 3** Young stock have been weighed and have been growing well.

PASTURE INFORMATION	Farm			Irrigated			Rain-fed		
	Last Week	This Week	Variation	Last Week	This Week	Variation	Last Week	This Week	Variation
Grazed milking area (ha)	109.1	109.1	0.0	40.5	49.5	9.0	68.6	59.7	-9
Rotation Length (days)	33	31	-1	25	29	5	44	33	-11
Grazing allocation per day (ha)	3.4	3.5	0.1	2.0	1.7	-0.3	1.4	1.8	0.5
Average time since last grazed (days)	26	38	12	26	32	6	26	43	17
Leaf appearance rate (days per leaf)	11	11	0	9	8	-1	12	13	1
Average Pasture Cover (kgDM/ha)	2347	2197	-150	2384	2255	-129	2317	2149	-168
Pasture Growth Rate (kgDM/ha/day)	36	14	-22	50	32	-18	26	-1	-27
Post Grazing Biomass (kgDM/ha)	1406	1448	42						
Nitrogen applied YTD (kgN/ha)	112	112	0	29	0	-29	7	0	-7

*Please note all pasture calculations detailed above are based on the current Grazed Milking Area

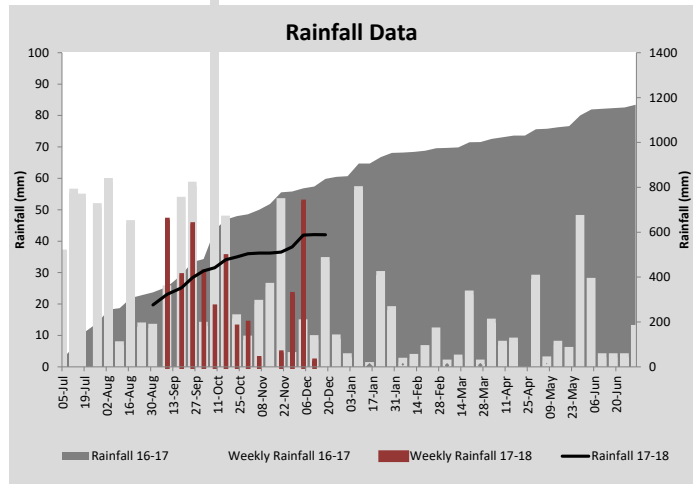
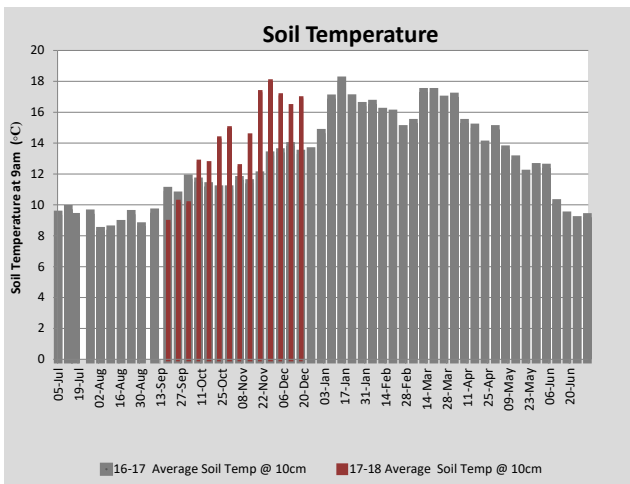
MILK PRODUCTION	Last Week	This Week	Variation
Average No. cows in milk (vat)	318	318	0
Litres per cow	18.9	18.4	-0.5
% Fat	4.41	4.47	0.05
% Protein	3.35	3.37	0.02
MS/cow/day	1.47	1.43	-0.04
MS/ha/day	4.13	4.03	-0.10
BMCC	161,857	163,571	1,714
Average Liveweight (kg)	0	0	0
	Budget	To Date	Variation
Total Milk Production (kgMS)	67,856	54,612	-20%
MS/ha YTD	595	537	-10%



Last 7 days					
Milkers Diet	kg DM	MJ ME	CP (%)	NDF (%)	\$/cow
Pasture Intake	17.0	11.5	11.4	46.2	0.0
Concentrates	4.0	12.8	13.0	10.0	0.0
Silage	1.3	0.0	0.0	0.0	0.0
Grazed forage	0.0	0.0	0.0	0.0	0.0
Other feeds	0.0	0.0	0.0	0.0	0.0
Total	22.3	247	11.0	37.0	0
Target			16-18	>33	0



Weighing of young stock is carried out on a monthly basis



Analysis			
Expected growth rate next 7 days (kgDM/ha/day)	35	Target Leaf Grazing Stage	3.0
Total Demand from Pasture (kgDM/ha/day)	35	Predicted APC 7 days time	2198
APC balance (kgDM/ha/day)	0	Predicted APC Change	0.2

Discussion

There has been no rainfall over the past week and as a consequence, pasture growth rates are very low on the rainfed part of the farm. Silage is being fed to maintain intakes and slow rotation length. Insecticide has been sprayed on areas of the farm where there were large populations of army worm. Thistle spraying has been ongoing. Young stock have all been weighed and are on target. It is obviously important as conditions become drier and there is less pasture available on the rainfed areas of the farm (which includes all the support area) to continue to monitor liveweight growth. A summer feed budget has been completed and PKE has been purchased to provide additional feed for both the milking herd and young stock during this period.

18 December 2017

