

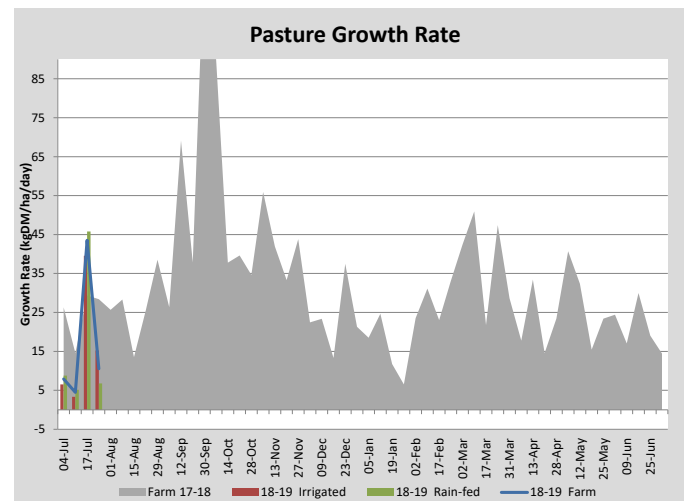
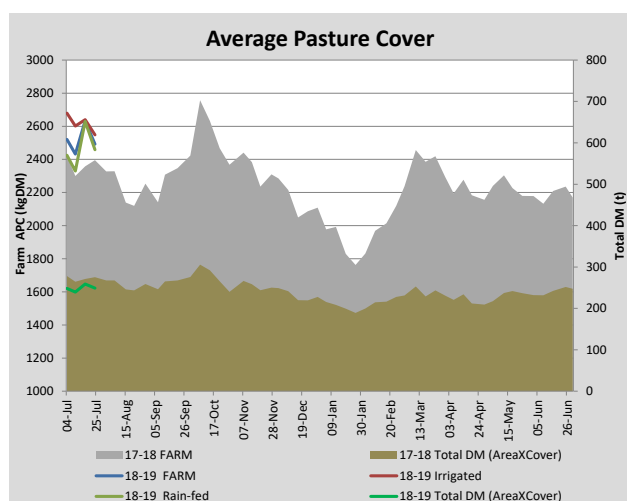
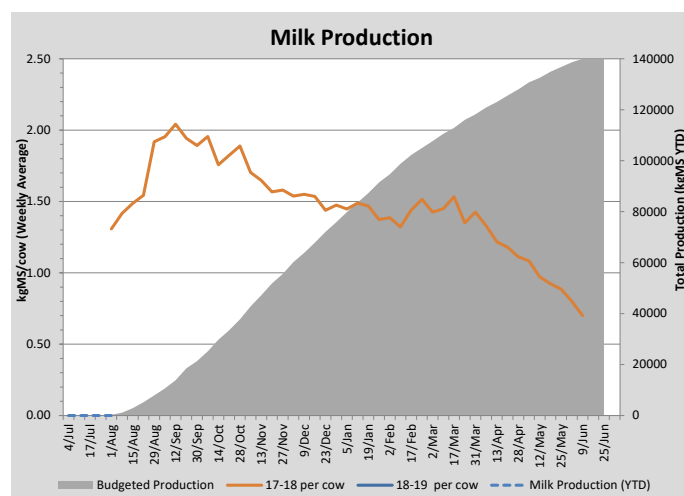
Key Summary Points

- 1 Calving has started.
- 2 The average pasture cover has declined but is still sitting above target.
- 3 A feed pad is being used to feed hay to the springers and reduce pugging damage.

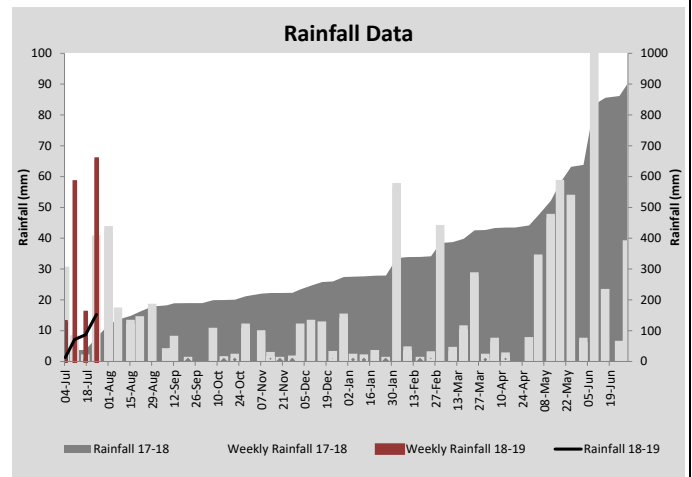
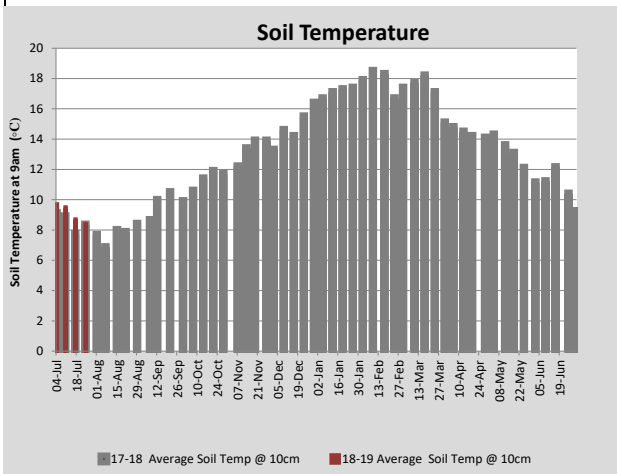
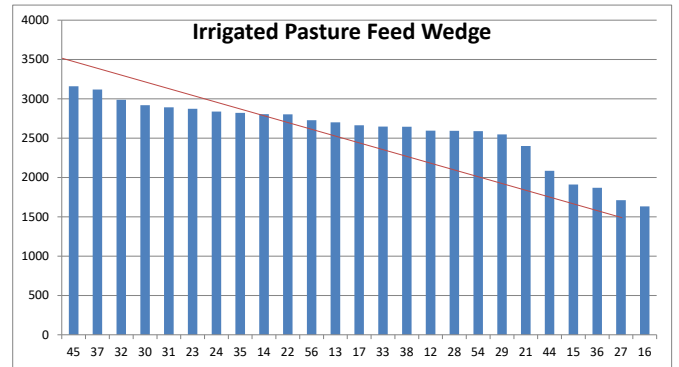
PASTURE INFORMATION	Farm			Irrigated			Rain-fed		
	Last Week	This Week	Variation	Last Week	This Week	Variation	Last Week	This Week	Variation
Grazed milking area (ha)	98.3	99.9	1.6	37.2	37.2	0.0	76.8	62.8	-14
Leaf appearance rate (days per leaf)	22	22	0	17	22	5	17	22	5
Average Pasture Cover (kgDM/ha)	2634	2492	-141	2196	2548	352	2156	2459	303
Pasture Growth Rate (kgDM/ha/day)	44	11	-33	10	15	5	11	7	-4
Post Grazing Biomass (kgDM/ha)	1350	1538	188						
Nitrogen applied YTD (kgN/ha)	0	0	0	0	0	0	0	0	0

*Please note all pasture calculations detailed above are based on the current Grazed Milking Area

MILK PRODUCTION	Last Week	This Week	Variation
Average No. cows in milk (vat)	0	0	0
Litres per cow	#N/A	#N/A	#N/A
% Fat	#N/A	#N/A	#N/A
% Protein	#N/A	#N/A	#N/A
MS/cow/day	#N/A	#N/A	#N/A
MS/ha/day	#N/A	#N/A	#N/A
BMCC	#N/A	#N/A	#N/A
Average Liveweight (kg)	0	0	0
	Budget	To Date	Variation
Total Milk Production (kgMS)	0	0	#DIV/0!
MS/ha YTD	0		



Last 7 days					
Milkers Diet	kg DM	MJ ME	CP (%)	NDF (%)	\$/cow
Pasture Intake	16.0	0.0	0.0	0.0	0.0
Concentrates	2.0	0.0	0.0	0.0	0.0
Silage	0.0	0.0	0.0	0.0	0.0
Grazed forage	0.0	0.0	0.0	0.0	0.0
Other feeds	0.0	0.0	0.0	0.0	0.0
Total	18	0	0.0	0.0	0
Target		90	16-18	>33	0



Analysis			
Expected growth rate next 7 days (kgDM/ha/day)	15	Target Leaf Grazing Stage	2.5-3.0
Total Demand from Pasture (kgDM/ha/day)	22	Predicted APC 7 days time	2447
APC balance (kgDM/ha/day)	-7	Predicted APC Change	-45.5

Discussion

All the calf sheds are set-up and ready. Calving has just started. All calves will be fed twice with high quality colostrum (tested with a refractometer) - once when they are brought-in and then a follow-up feed within 12 hours. Cows are being drafted from the dry herd into the springers herd twice weekly based on their calving date. Springers are being fed lead feed in the dairy each day and ad-lib hay on a feed pad. The feed pad is being used for most of the feeding to minimise pugging damage during the wet weather. The further-from-calving dry cows continue to be fed crop.

24 July 2018

