

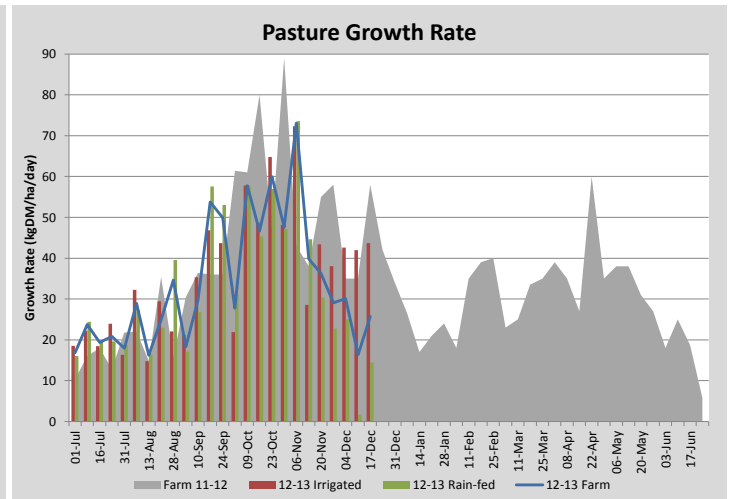
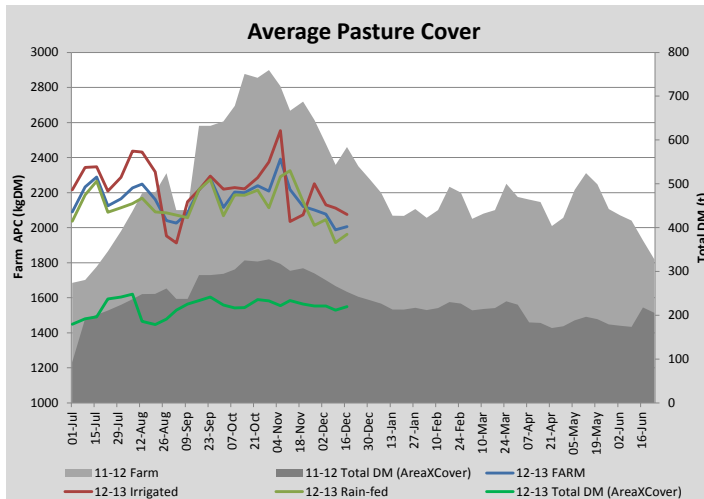
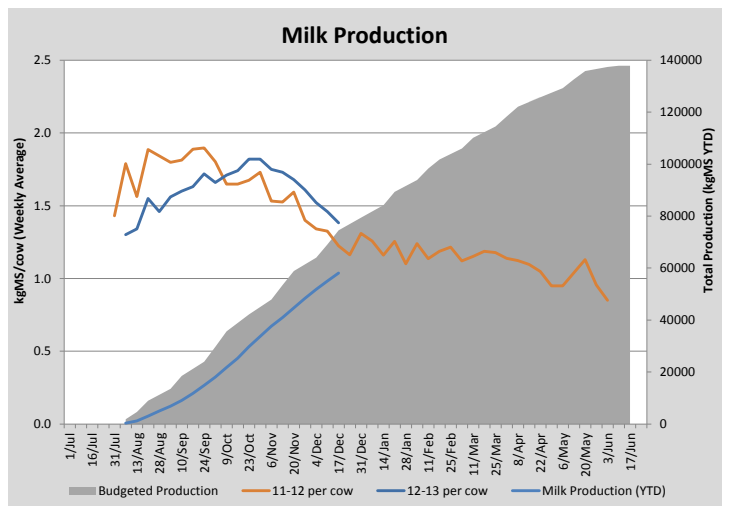
Key Summary Points

- 1** We have managed to hold average pasture covers steady the past 7 days and some very welcome rain has started the rain-fed platform growing
- 2** We will reduce the silage component of the milkers diet and speed up the rainfed rotation slightly
- 3** Key focus this week on closely monitoring soil moisture levels to determine irrigation startup

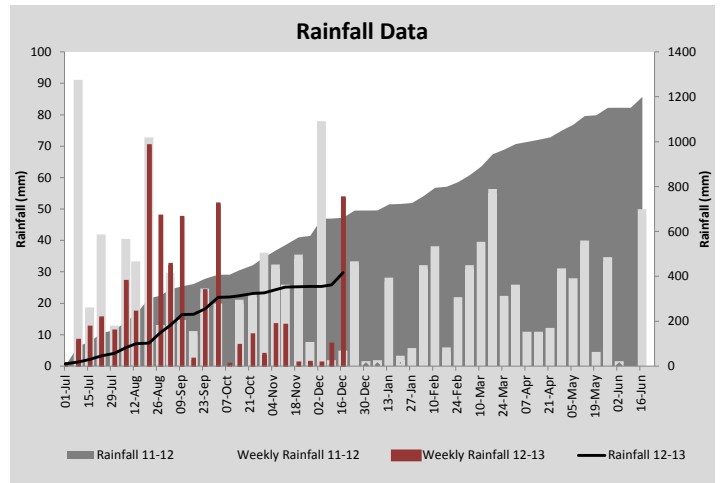
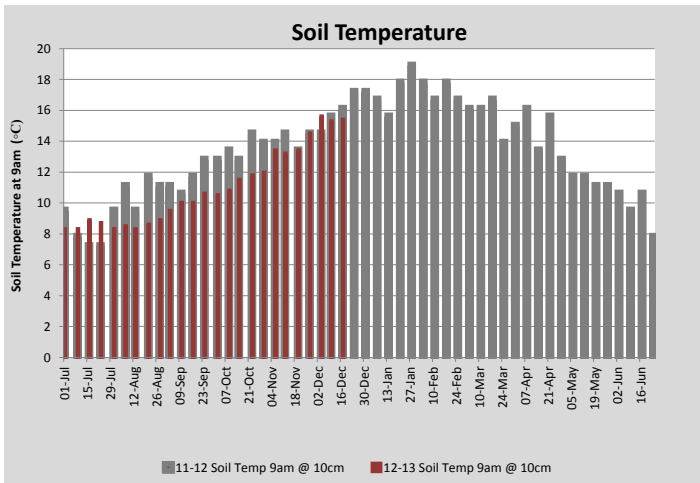
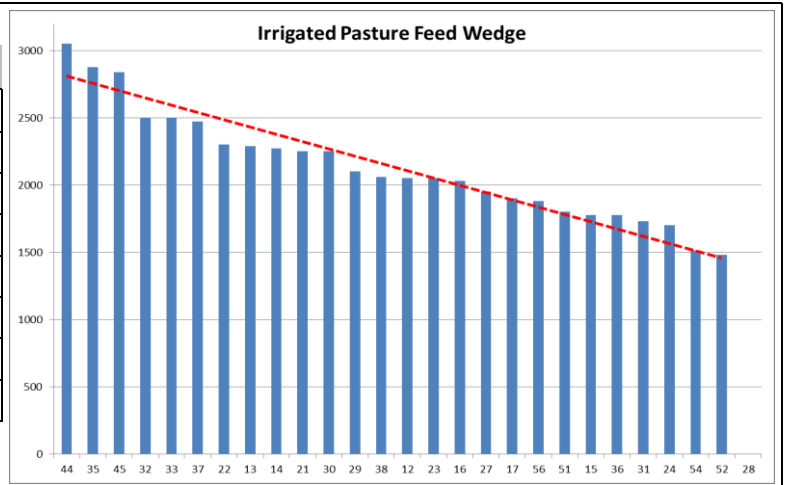
PASTURE INFORMATION	Farm			Irrigated			Rain-fed		
	Last Week	This Week	Variation	Last Week	This Week	Variation	Last Week	This Week	Variation
Grazed milking area (ha)	106.3	109.6	3.2	38.9	42.1	3.23	67.4	67.4	0.00
Rotation Length (days)	43	42		24	28		75	61	
Grazing allocation per day (ha)	2.5	2.6	0.10	1.6	1.5	0.10	0.9	1.1	0.20
Average time since last grazed (days)	47	45	-2	25	24	1	60	58	-2
Leaf appearance rate (days per leaf)	13	13	-0	9	9	0	15	15	0
Average Pasture Cover (kgDM/ha)	1987	2005	18	2111	2075	-35	1915	1961	46
Pasture Growth Rate (kgDM/ha/day)	16	26	9	42	44	2	2	14	13
Post Grazing Biomass (kgDM/ha)	1500	1500	0						
Nitrogen applied YTD (kgN/ha)	152	169	17	5	11	6	7	6	-0

*Please note all pasture calculations detailed above are based on the current Grazed Milking Area

MILK PRODUCTION	Last Week	This Week	Variation
No cows in milk (vat)	315	315	0.00
Litres per cow	20.9	20.0	0.86
% Fat	3.96	3.95	0.01
% Protein	3.03	3.00	0.03
MS/cow/day	1.46	1.38	0.08
MS/ha/day	4.18	3.95	0.23
BMCC	178	206	28.00
Average Liveweight (kg)			
	Budget	To Date	Variation
Total Milk Production (kgMS)	74544	58050.00	78%
MS/ha YTD	666	518	-147



Last 7 days					
Milkers Diet	kg DM	ME	CP	NDF	\$/cow
Pasture Intake	8.5	10.5	0.0	0.0	0.0
Concentrates	4.5	12.0	0.0	0.0	0.0
Silage	5.0	10.0	0.0	0.0	0.0
Grazed forage	0.0	0.0	0.0	0.0	0.0
Other feeds	0.0	0.0	0.0	0.0	0.0
Total	18	193.3	0	0	0
Target	18		0	0	0



Analysis			
Expected growth rate next 7 days (kgDM/ha/day)	38	Target Leaf Grazing Stage	3.0
Total Demand from Pasture (kgDM/ha/day)	30	Predicted APC 7 days time	2060
APC balance (kgDM/ha/day)	8	Predicted APC Change	54.7

Discussion

Some very welcome rain has replenished soil moisture levels (currently reading at 25-30 centibars at 30cm depth on rain-fed). This will boost rain-fed growth rates over the next 7 days and we will gradually speed up our rain-fed rotation to match this. This means using 1/48th of the rain-fed platform/day over the next 7 days and reducing pasture silage intake back to 2.5kg/cow/day. The rain-fed rotation will be re-assessed in 7 days time and potentially sped up further if pasture responds as expected. Milk production has dropped again the last 7 days but we expect this to start to stabilise at this level with some improved pasture quality ahead of us (especially following the rain). Irrigation is currently turned off but we will closely monitor soil moisture sensors and rainfall forecasts to determine startup. We have applied nitrogen at 40kg/N/ha to irrigated paddocks behind the cows and also applied to selected rain-fed paddocks where good responses were expected (paddocks with new pastures and/or which had been cut for silage and likely N deficient). Farm development works currently being undertaken include progressive installation of a new stock water system, dangerous tree removal on dam walls and one final go at earthworks to give the centre pivot best possible clearance around two remaining low spots.

17 December 2012

