

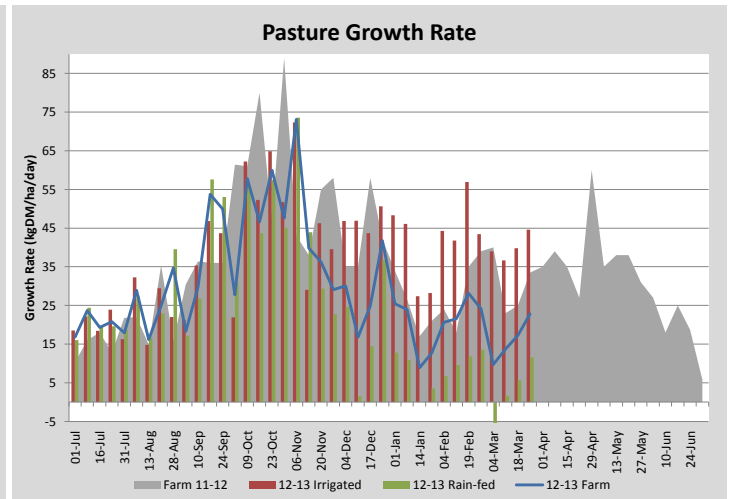
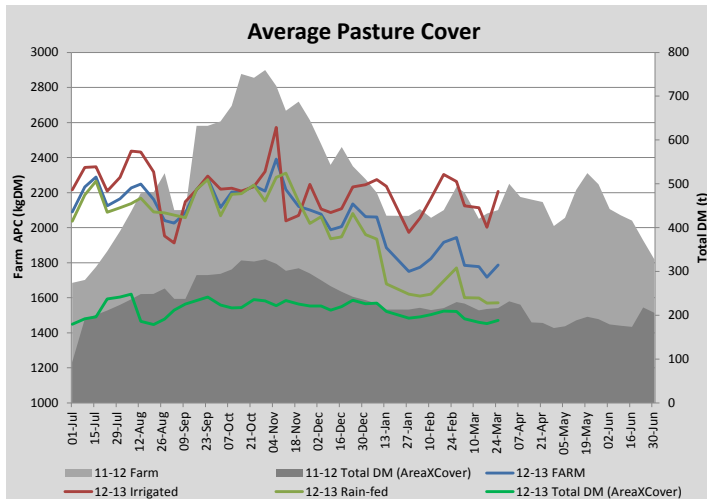
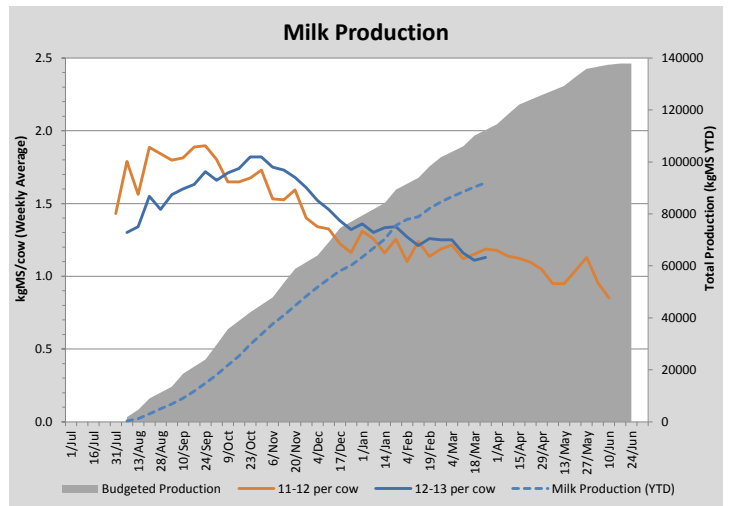
## Key Summary Points

- 1** Recent rain has boosted irrigated growth and helped kick start rain-fed growth
- 2** Growth should start to exceed current pasture demand and allow us to build average cover
- 3** Key focus this week is continuing with our autumn paddock renovation program

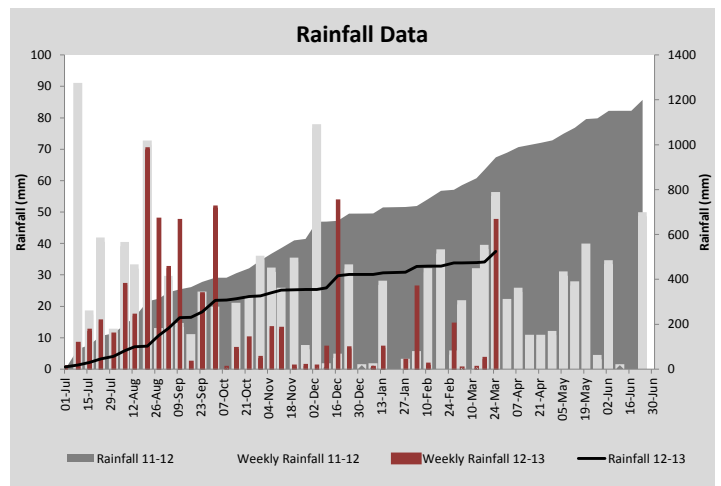
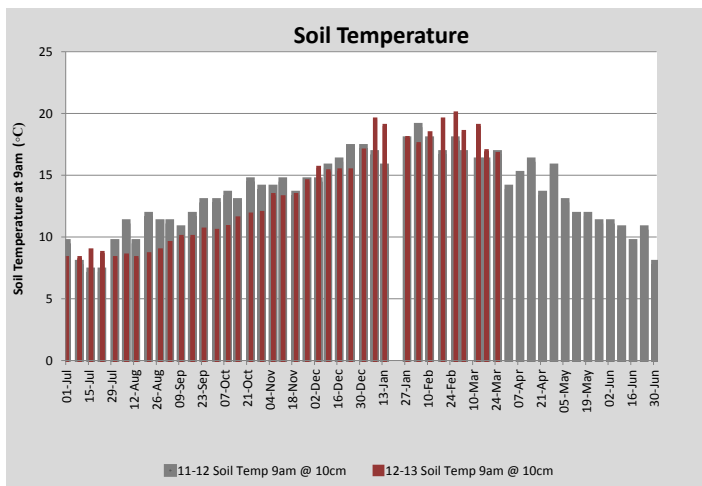
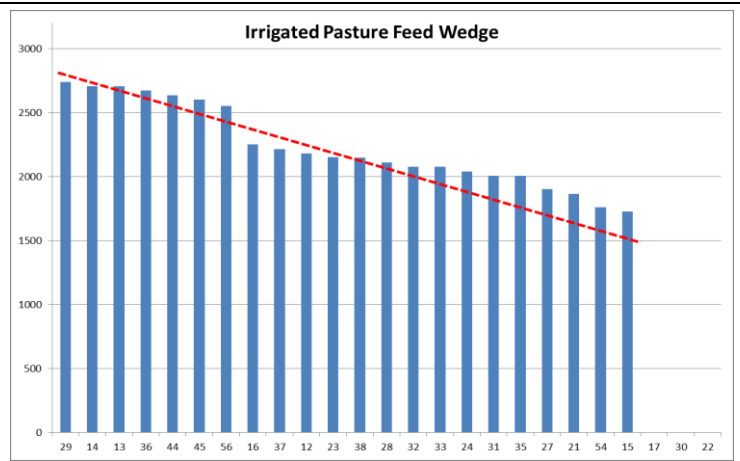
PASTURE INFORMATION	Farm			Irrigated			Rain-fed		
	Last Week	This Week	Variation	Last Week	This Week	Variation	Last Week	This Week	Variation
Grazed milking area (ha)	105.2	105.2	0.0	35.7	35.7	0.00	69.5	69.5	0.00
Rotation Length (days)	50	50		27	27		87	87	
Grazing allocation per day (ha)	2.1	2.1	0.00	1.3	1.3	0.00	0.8	0.8	0.00
Average time since last grazed (days)	52	50	-2	27	30	-3	65	60	-5
Leaf appearance rate (days per leaf)	10	11	1	10	11	1	#N/A	#N/A	#N/A
Average Pasture Cover (kgDM/ha)	1716	1786	70	2002	2206	204	1570	1570	1
Pasture Growth Rate (kgDM/ha/day)	17	23	6	40	45	5	6	12	6
Post Grazing Biomass (kgDM/ha)	1450	1500	50						
Nitrogen applied YTD (kgN/ha)	210	217	8	0	1	1	0	7	7

\*Please note all pasture calculations detailed above are based on the current Grazed Milking Area

MILK PRODUCTION	Last Week	This Week	Variation
No cows in milk (vat)	223	223	0.00
Litres per cow	14.3	14.3	0.01
% Fat	4.50	4.61	0.11
% Protein	3.23	3.31	0.08
MS/cow/day	1.11	1.13	0.02
MS/ha/day	1.87	1.89	0.02
BMCC	170	175	5.00
Average Liveweight (kg)			
	Budget	To Date	Variation
Total Milk Production (kgMS)	112320	91999	82%
MS/ha YTD	1003	821	-181



Last 7 days					
Milkers Diet	kg DM	ME	CP	NDF	\$/cow
Pasture Intake	7.0	11.0	0.0	0.0	0.0
Concentrates	5.0	11.0	0.0	0.0	0.0
Silage	5.0	8.5	0.0	0.0	0.0
Grazed forage	0.0	0.0	0.0	0.0	0.0
Other feeds	0.0	0.0	0.0	0.0	0.0
<b>Total</b>	<b>17</b>	<b>174.5</b>	<b>0</b>	<b>0</b>	<b>0</b>
<b>Target</b>	<b>17</b>		<b>0</b>	<b>0</b>	<b>0</b>



Analysis			
Expected growth rate next 7 days (kgDM/ha/day)	22	Target Leaf Grazing Stage	3.0
Total Demand from Pasture (kgDM/ha/day)	15	Predicted APC 7 days time	1838
APC balance (kgDM/ha/day)	7	Predicted APC Change	51.4

## Discussion

Recent rain has started the rain-fed pastures growing and follow up rain forecast this week should help build soil moisture further. If we expect a 20kgDM/ha/day growth rate on the rain-fed pasture for the next week and to continue to grow at around 40kgDM/ha/day on the irrigated area this will achieve an average growth rate of 27kgDM/ha/day across the entire milking platform. We will reduce silage in the milkers diet back to 4kgDM/cow/day this week which leaves a daily pasture demand of 15kgDM/ha/day. We should therefore be able to start building average cover. Our winter kale crop is progressing reasonably well and has also been given a boost following the rain.

# 25 March 2013

