

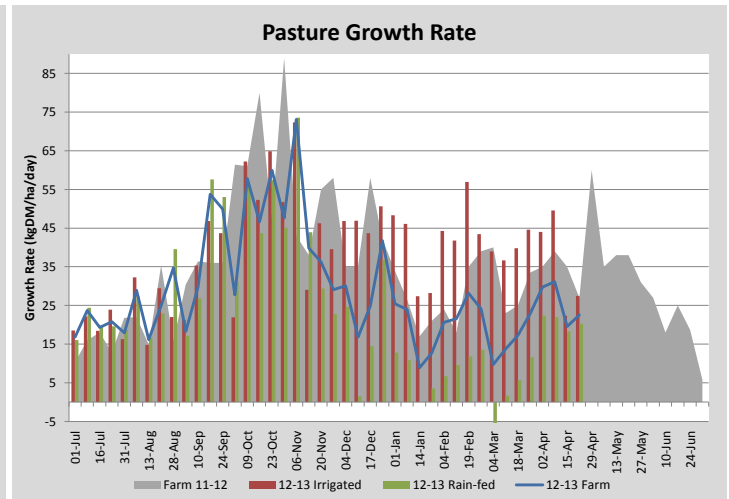
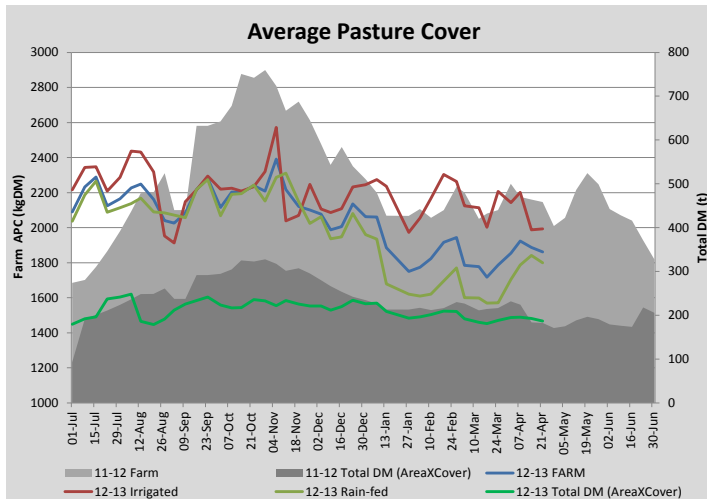
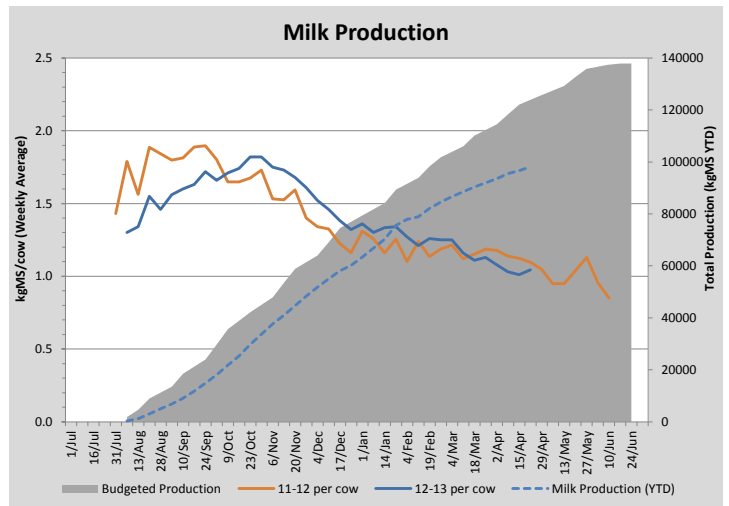
Key Summary Points

- 1** Average pasture covers have remained steady the last 7 days.
- 2** Pasture covers are lining up well for the start of the MMFF trial in May.
- 3** Key focus this week on making best use of remaining supplement to keep rotation length as long as possible.

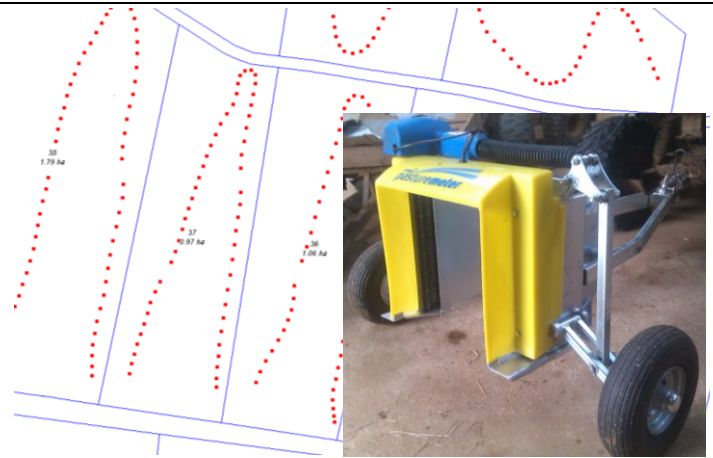
PASTURE INFORMATION	Farm			Irrigated			Rain-fed		
	Last Week	This Week	Variation	Last Week	This Week	Variation	Last Week	This Week	Variation
Grazed milking area (ha)	102.1	100.3	1.8	31.7	31.7	0.00	70.4	68.6	1.81
Rotation Length (days)	49	56		24	26		88	114	
Grazing allocation per day (ha)	2.1	1.8	0.30	1.3	1.2	0.10	0.8	0.6	0.20
Average time since last grazed (days)	59	42	-17	25	26	-1	75	50	-25
Leaf appearance rate (days per leaf)	12	12	-0	12	12	0	12	12	0
Average Pasture Cover (kgDM/ha)	1887	1861	-26	1987	1993	6	1842	1800	-42
Pasture Growth Rate (kgDM/ha/day)	20	23	3	22	27	5	18	20	2
Post Grazing Biomass (kgDM/ha)	1450	1350	100						
Nitrogen applied YTD (kgN/ha)	250	250	0	0	0	0	0	0	0

*Please note all pasture calculations detailed above are based on the current Grazed Milking Area

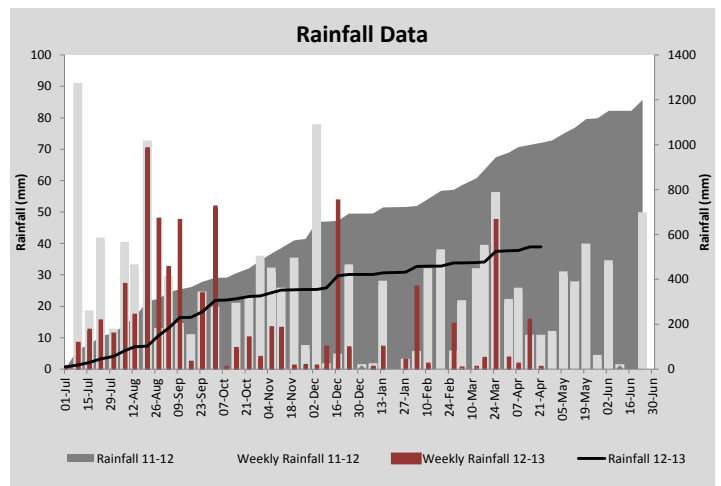
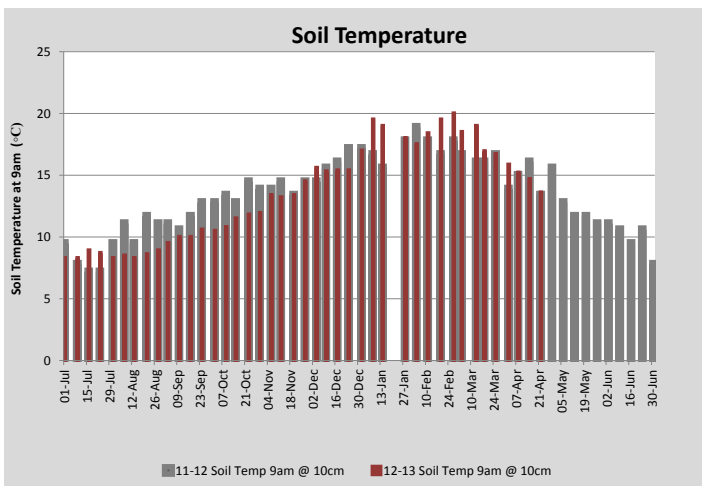
MILK PRODUCTION	Last Week	This Week	Variation
No cows in milk (vat)	180	160	20.00
Litres per cow	12.2	12.6	0.39
% Fat	4.81	4.77	0.04
% Protein	3.47	3.52	0.05
MS/cow/day	1.01	1.04	0.03
MS/ha/day	1.59	1.31	0.28
BMCC	168	185	17.00
Average Liveweight (kg)			
	Budget	To Date	Variation
Total Milk Production (kgMS)	123922	98061	79%
MS/ha YTD	1106	876	-231



Last 7 days					
Milkers Diet	kg DM	ME	CP	NDF	\$/cow
Pasture Intake	6.5	11.0	0.0	0.0	0.0
Concentrates	5.0	11.0	0.0	0.0	0.0
Silage	5.5	8.5	0.0	0.0	0.0
Grazed forage	0.0	0.0	0.0	0.0	0.0
Other feeds	0.0	0.0	0.0	0.0	0.0
Total	17	173.3	0	0	0
Target	17		0	0	0



Upgraded GPS Equipped CDAX showing GPS trail for automatic paddock recognition of readings



Analysis			
Expected growth rate next 7 days (kgDM/ha/day)	30	Target Leaf Grazing Stage	3.0
Total Demand from Pasture (kgDM/ha/day)	18	Predicted APC 7 days time	1942
APC balance (kgDM/ha/day)	12	Predicted APC Change	81.0

Discussion

Paddocks for the More Milk From Forages (MMFF) research trial are growing well and lining up at the top of the feed-wedge ready for the three week trial period starting 1 May. There will be 64 milkers offered 'ad lib' intake across the various treatments in the trial with the remainder of the milkers used to clean up residuals behind them. To keep the paddocks available for the trial we can't graze these with the herd over the next 10 days and will instead have to eat into paddocks further down the wedge which are slightly below ideal grazing stage. To help maintain our rotation length as long as possible while grazing reduced covers we will use the remainder of our silage this week (feeding 4kgDM/cow/day). We still have hay and straw on hand for winter supplement in addition to our winter Kale crop. The remaining milkers are gaining weight/condition and we continue to manage the dry cows in two mobs based on condition/feed requirement. We have upgraded our CDAX pasture meter to the GPS equipped version this week. This version uses the GPS to determine which paddock readings are taken in and automatically assigns them when you upload the data to the computer (this means you don't have to type in paddock numbers). This unit appears to be reading very close to our previous unit but there may be slight variation due to some small design changes.

22 April 2013

