

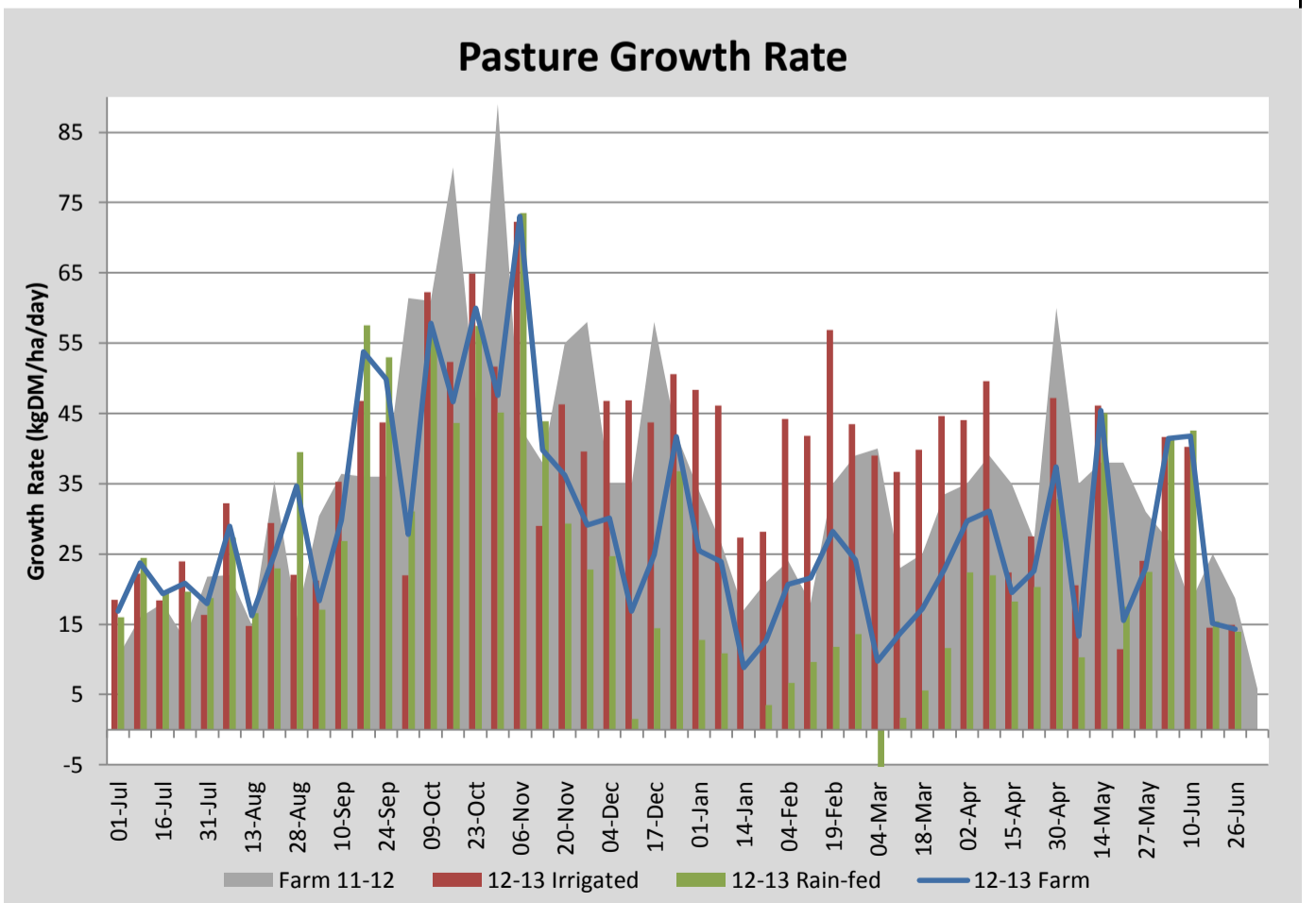
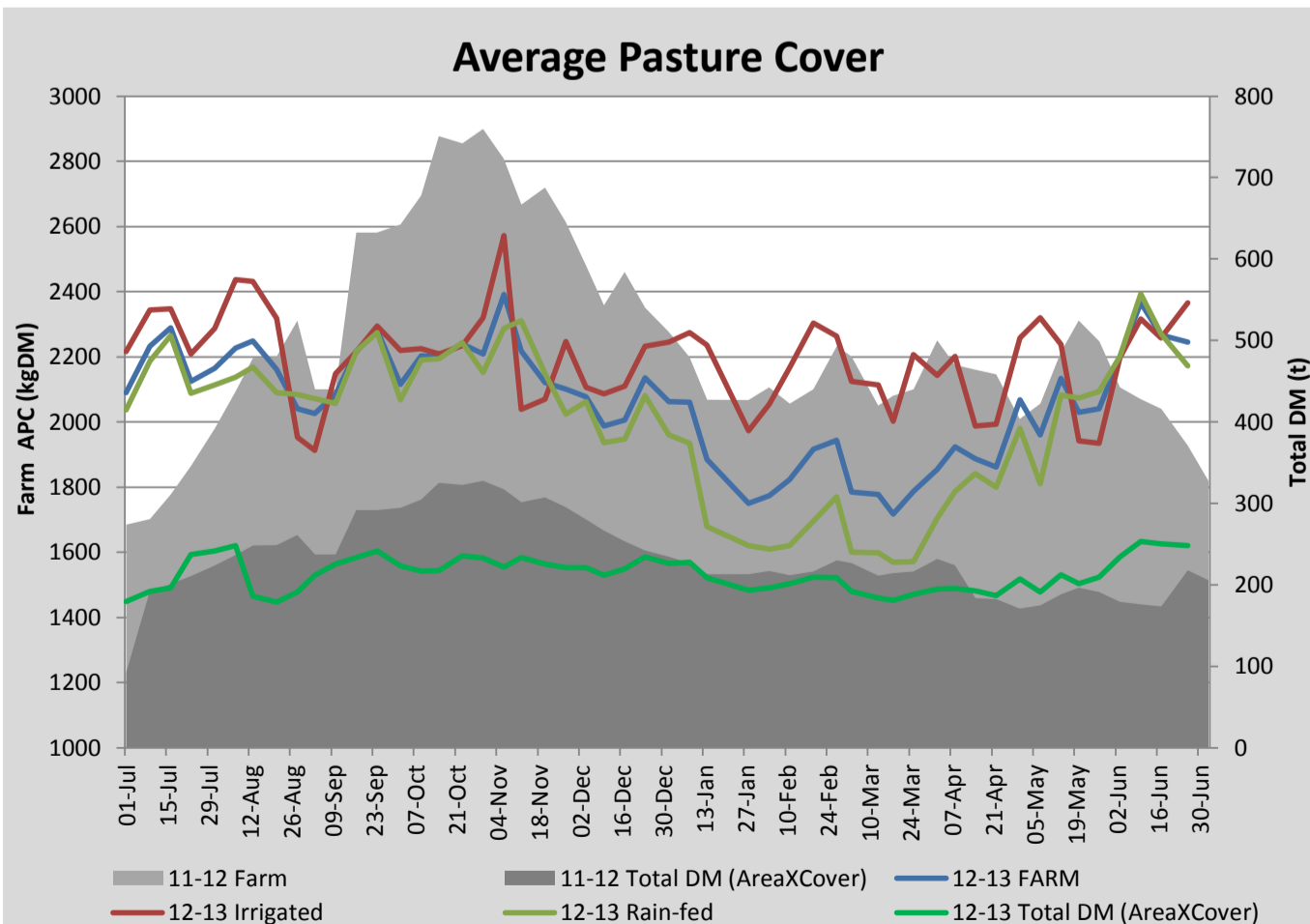
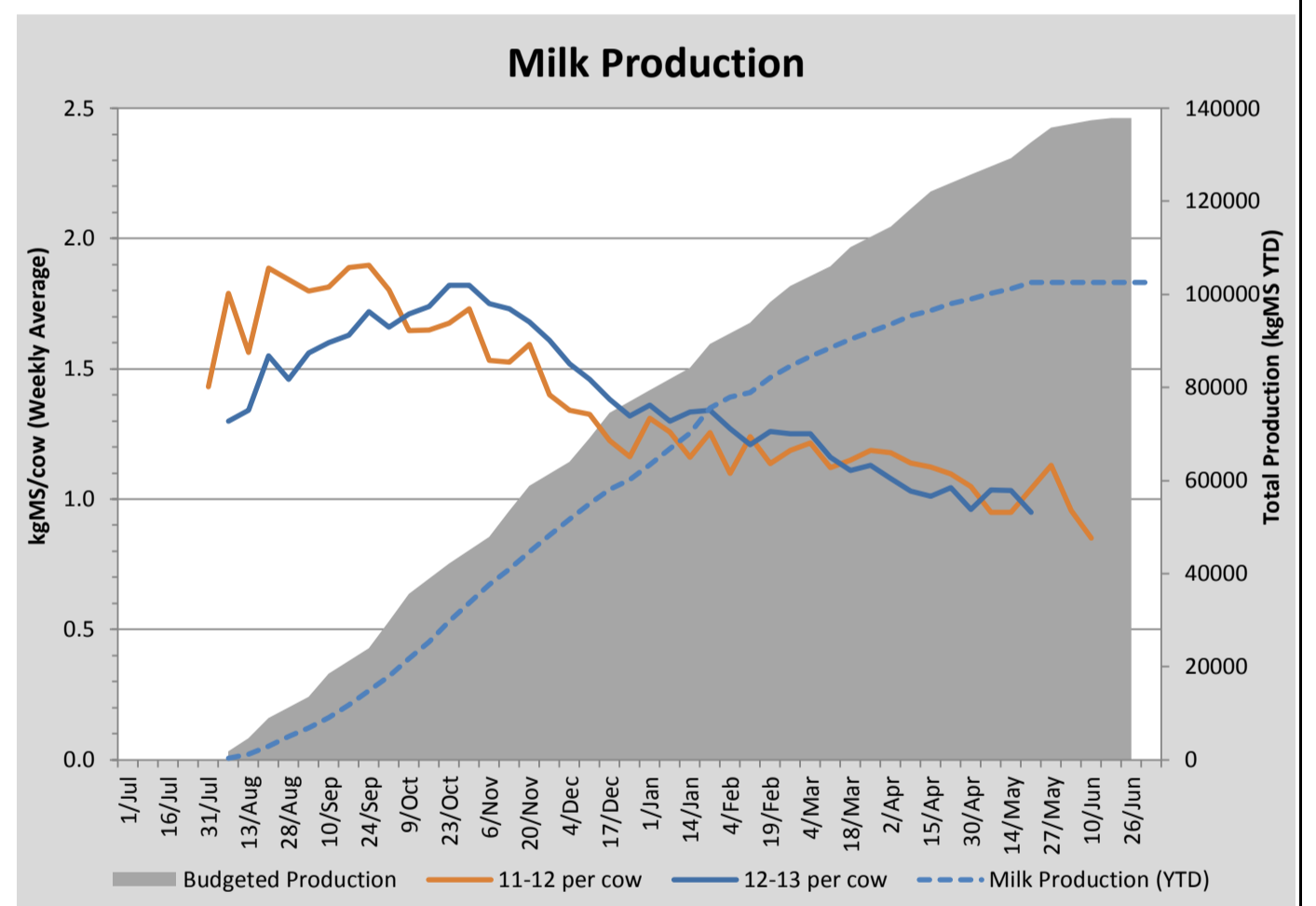
Key Summary Points

- 1 Average soil temperature has dropped from 10.6°C to 8.5°C
- 2 Average pasture cover has held over the last week at around 2250kgDM/ha
- 3 40 bales of silage have been purchased

PASTURE INFORMATION	Farm			Irrigated			Rain-fed		
	Last Week	This Week	Variation	Last Week	This Week	Variation	Last Week	This Week	Variation
Grazed milking area (ha)	110.5	110.5	0.0	41.0	41.0	0.00	69.5	69.5	0.00
Rotation Length (days)	111	194		82	103		139	409	
Grazing allocation per day (ha)	1.0	0.6	0.43	0.5	0.4	0.10	0.5	0.2	0.33
Average time since last grazed (days)	68	85	18	40	64	-24	84	98	14
Leaf appearance rate (days per leaf)	15	16	1	15	16	1	15	16	1
Average Pasture Cover (kgDM/ha)	2266	2244	-22	2258	2366	108	2271	2172	-98
Pasture Growth Rate (kgDM/ha/day)	15	14	-1	15	15	0	15	14	-1
Post Grazing Biomass (kgDM/ha)	1400	1350	50						
Nitrogen applied YTD (kgN/ha)	254	254	0	0	0	0	0	0	0

*Please note all pasture calculations detailed above are based on the current Grazed Milking Area

MILK PRODUCTION	Last Week	This Week	Variation
No cows in milk (vat)	0	0	0.00
Litres per cow	#N/A	#N/A	#N/A
% Fat	#N/A	#N/A	#N/A
% Protein	#N/A	#N/A	#N/A
MS/cow/day	#N/A	#N/A	#N/A
MS/ha/day	#N/A	#N/A	#N/A
BMCC	#N/A	#N/A	#N/A
Average Liveweight (kg)			
	Budget	To Date	Variation
Total Milk Production (kgMS)	137874	102526	74%
MS/ha YTD	1231	#N/A	#N/A

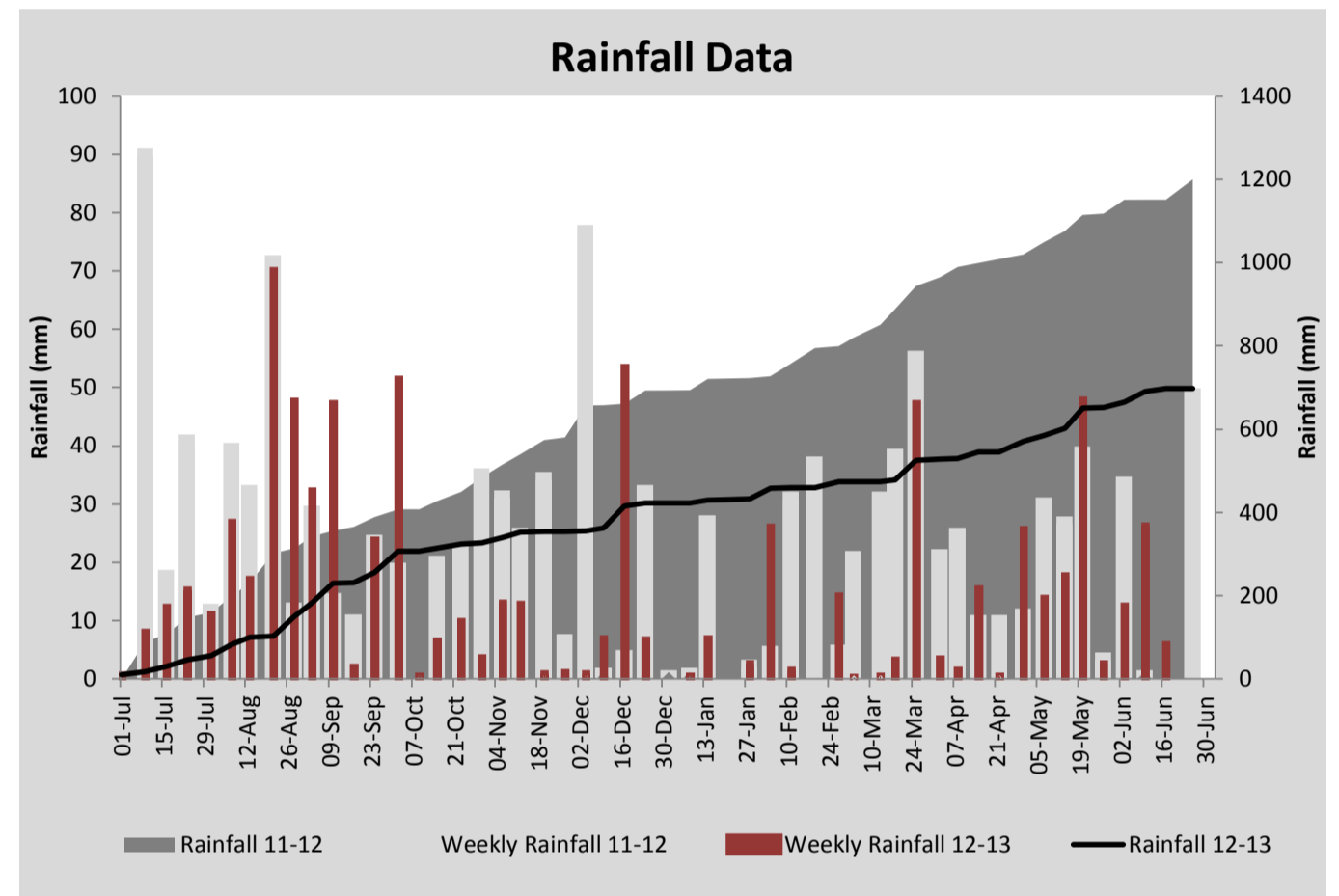
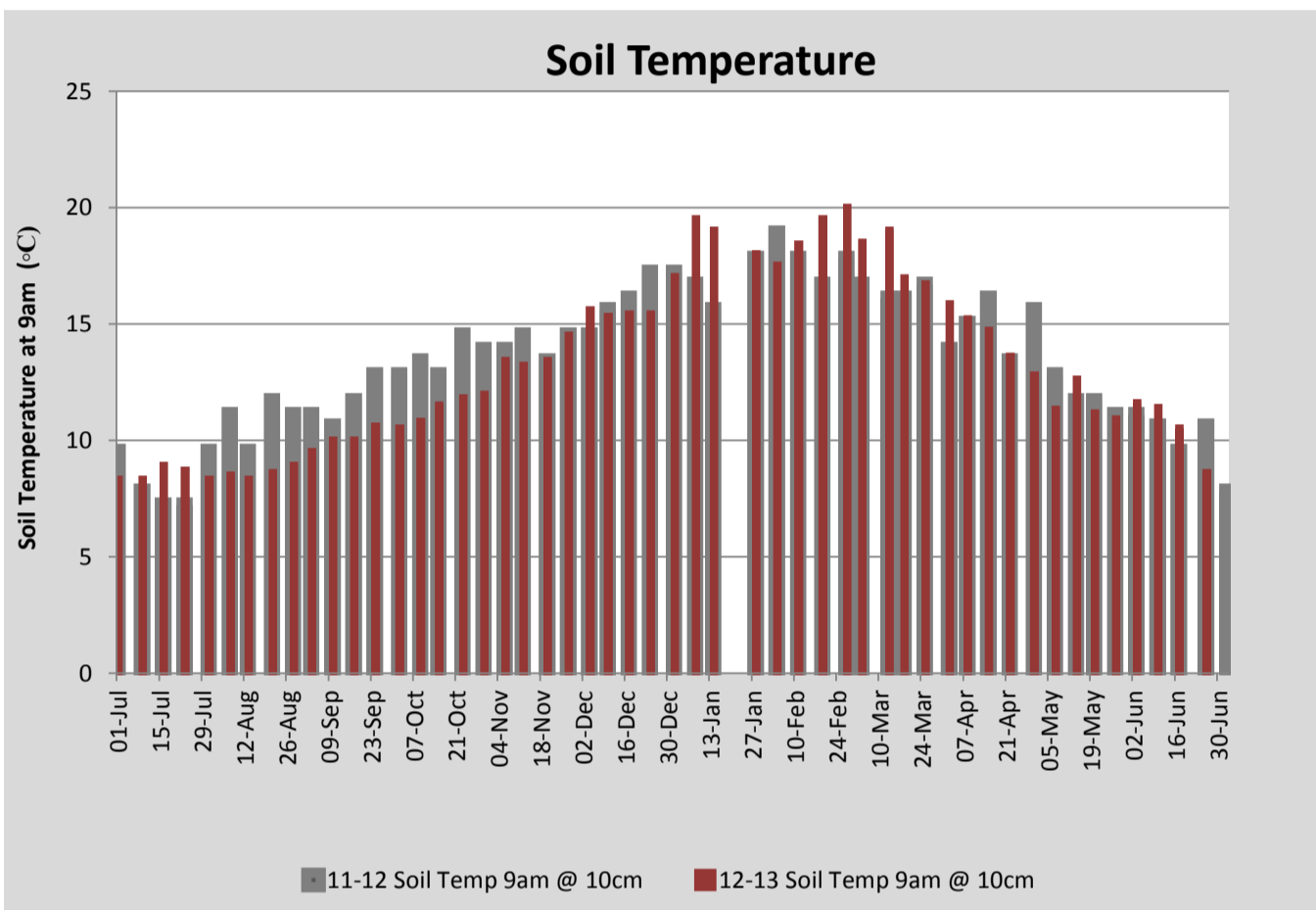




'Tonic' plantain/'Base' perennial ryegrass - More Milk From Forages (MMFF) research trial



'Tonic' plantain - (MMFF)



Analysis			
Expected growth rate next 7 days (kgDM/ha/day)	20	Target Leaf Grazing Stage	3.0
Total Demand from Pasture (kgDM/ha/day)	8	Predicted APC 7 days time	2327
APC balance (kgDM/ha/day)	12	Predicted APC Change	82.6

Discussion

Heavy frosts most mornings this week have seen soil temperature and corresponding pasture growth rates fall significantly. Average pasture cover has held this week however post grazing residuals have dropped to approximately 1350kgDM/ha. 40 bales of silage have been purchased (\$45/bale) to help manage residuals and extend the rotation length on the milking platform. We have approximately 6 ha of kale remaining on the run-off and the dry cows seem to be responding well. Body condition scoring for the entire herd has been scheduled for Monday (1st July) to assess the effectiveness of the current feeding programs.

26 June 2013

