

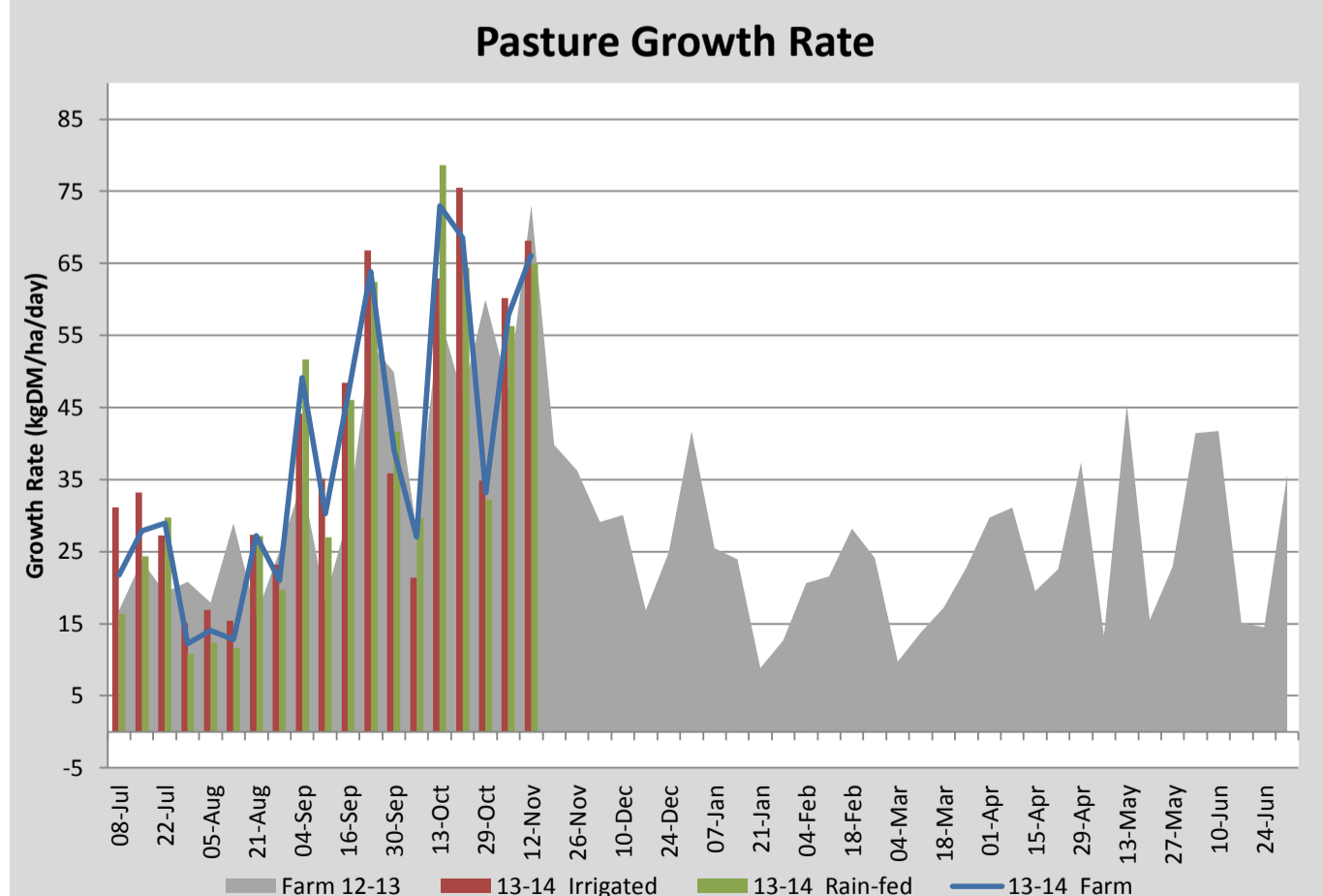
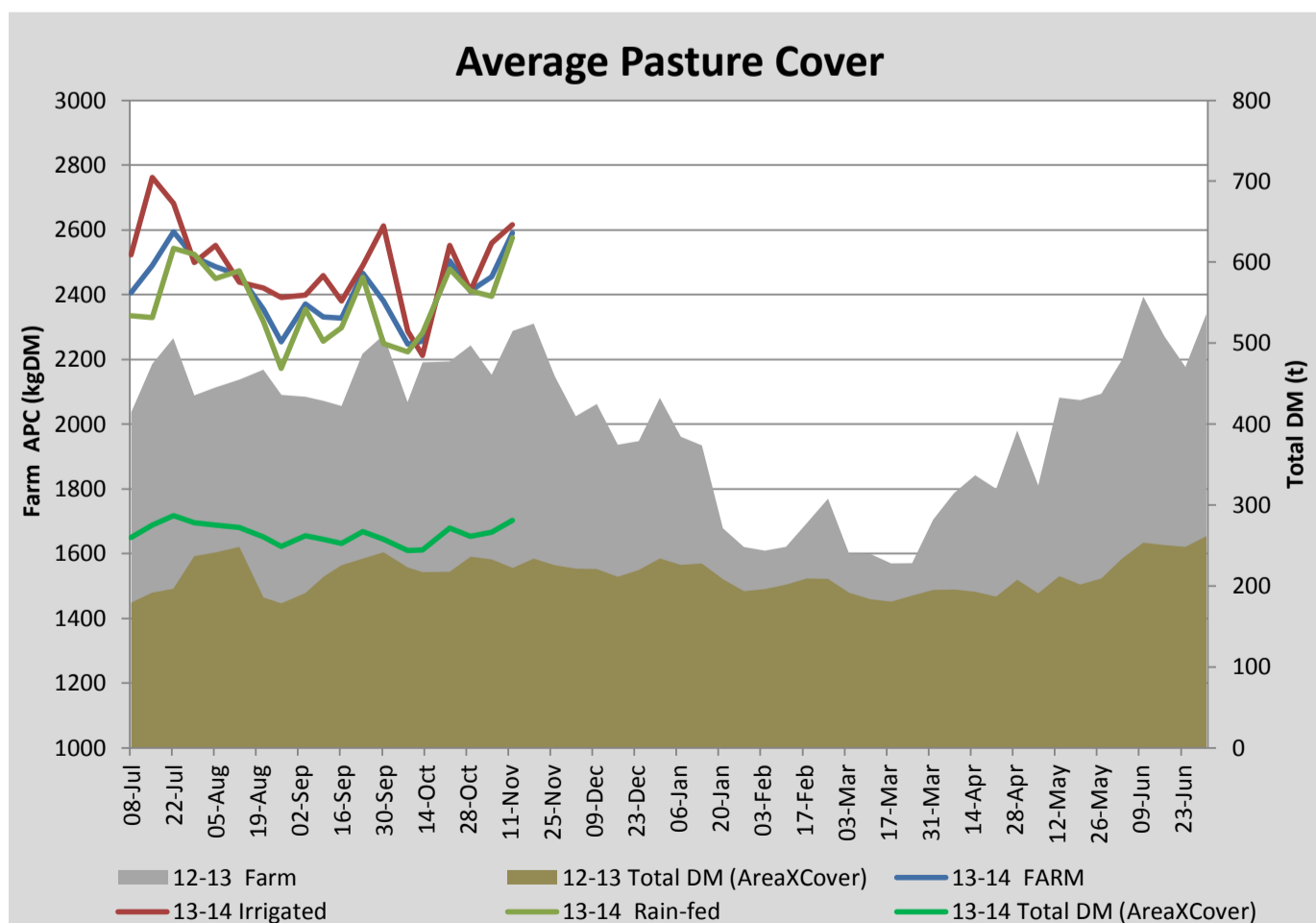
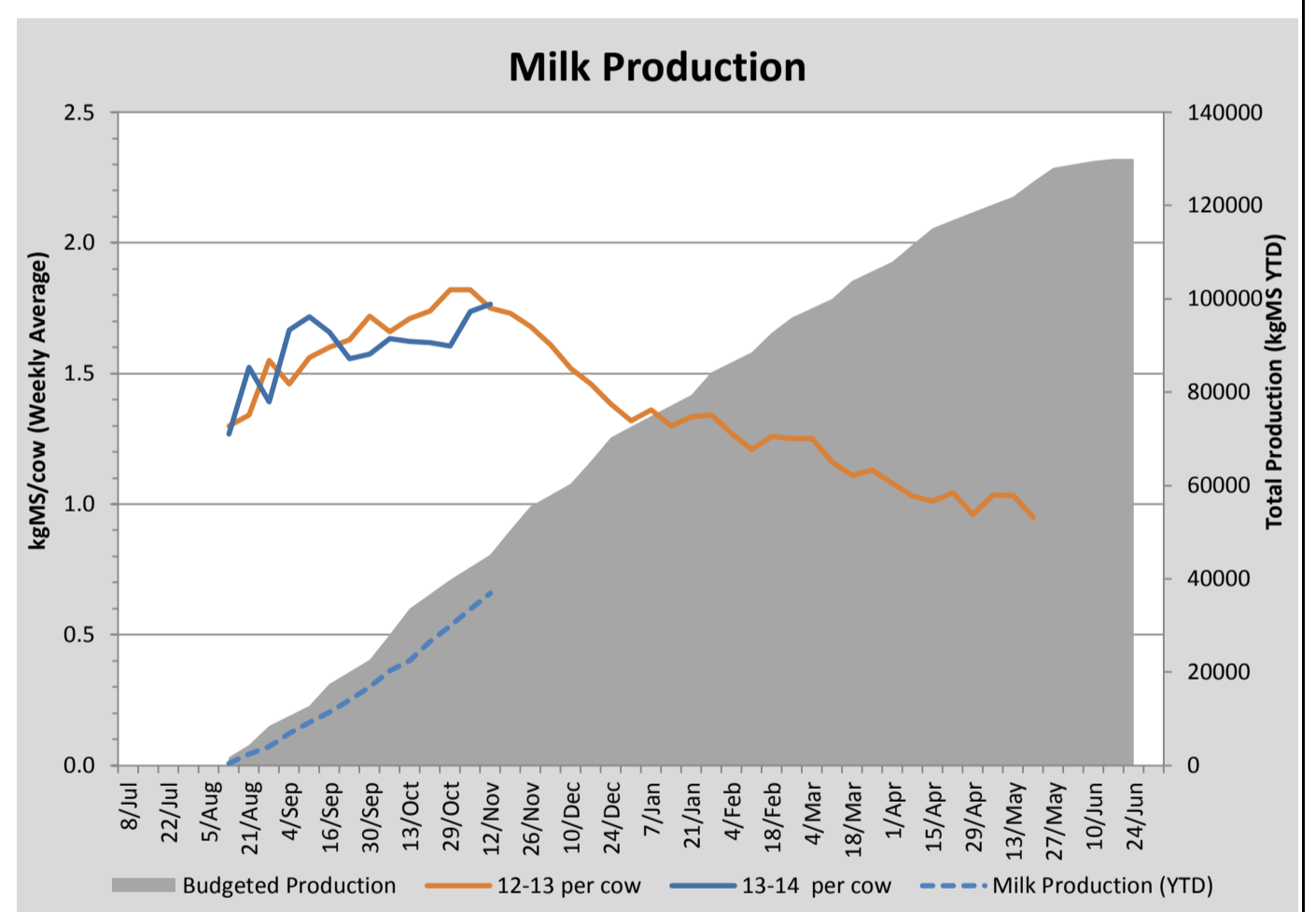
Key Summary Points

- 1** The average pasture cover and growth rates have increased over the past week.
- 2** Achieving post-grazing residual targets continues to be challenging.
- 3** Calves and heifers were weighed this week.

PASTURE INFORMATION	Farm			Irrigated			Rain-fed		
	Last Week	This Week	Variation	Last Week	This Week	Variation	Last Week	This Week	Variation
Grazed milking area (ha)	108.4	108.4	0.0	38.9	38.9	-0.0	69.5	69.5	0
Rotation Length (days)	27	35	8	32	32	0	25	37	12
Grazing allocation per day (ha)	3.8	3.1	-0.7	1.2	1.2	0.0	2.6	1.8	-0.8
Average time since last grazed (days)	27	30	3	26	31	5	27	29	2
Leaf appearance rate (days per leaf)	13	13	-0	13	12	-1	13	13	0
Average Pasture Cover (kgDM/ha)	2455	2591	136	2559	2616	57	2395	2576	181
Pasture Growth Rate (kgDM/ha/day)	58	66	8	60	68	8	56	65	9
Post Grazing Biomass (kgDM/ha)	1735	1788	53						
Nitrogen applied YTD (kgN/ha)	34	34	0	12	0	-12	14	0	-14

*Please note all pasture calculations detailed above are based on the current Grazed Milking Area

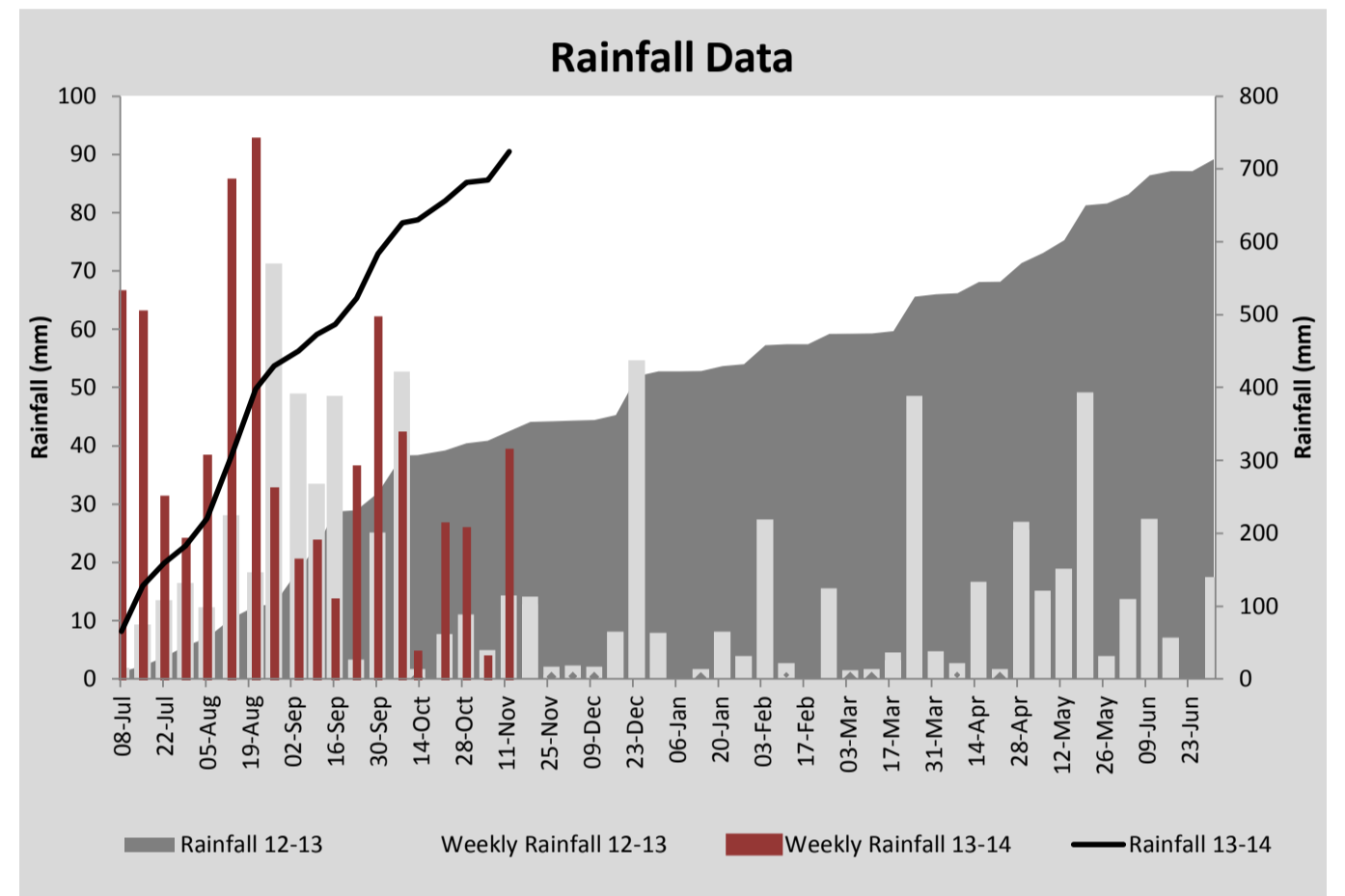
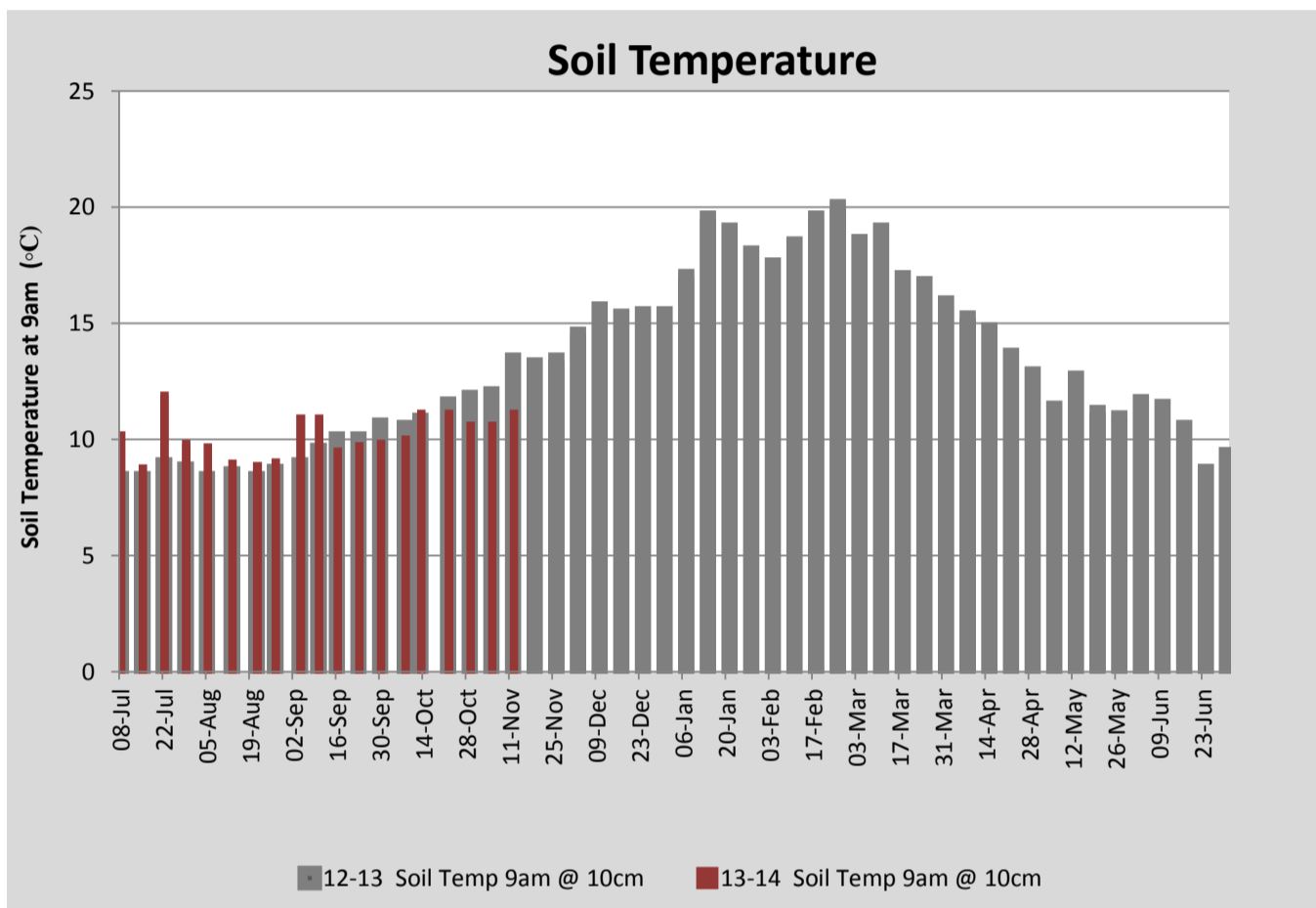
MILK PRODUCTION	Last Week	This Week	Variation
Average No. cows in milk (vat)	318	321	3
Litres per cow	24.7	24.8	0.1
% Fat	3.89	3.95	0.06
% Protein	3.13	3.17	0.04
MS/cow/day	1.74	1.77	0.03
MS/ha/day	4.89	5.02	0.13
BMCC	179	228	49
Average Liveweight (kg)	476	485	9
	Budget	To Date	Variation
Total Milk Production (kgMS)	45,151	36,893	82%
MS/ha YTD	403	362	-41



Last 7 days					
Milkers Diet	kg DM	MJ ME	CP (%)	NDF (%)	\$/cow
Pasture Intake	12.1	11.7	15.0	47.8	0.0
Concentrates	4.0	13.0	11.0	21.0	0.0
Silage	0.0	0.0	0.0	0.0	0.0
Grazed forage	0.0	0.0	0.0	0.0	0.0
Other feeds	0.0	0.0	0.0	0.0	0.0
Total	16.1	193.6	14.0	41.1	0
Target		191	16-18	>33	0



Another group of calves were weaned this week.



Analysis			
Expected growth rate next 7 days (kgDM/ha/day)	60	Target Leaf Grazing Stage	2.0
Total Demand from Pasture (kgDM/ha/day)	47	Predicted APC 7 days time	2679
APC balance (kgDM/ha/day)	13	Predicted APC Change	88.8

Discussion

Post-grazing residuals have increased further this week with the onset of reproductive growth. A proportion of the herd is being returned to graze residuals where required (number of cows sent back is based on an estimate of remaining available cover). This has slowed the current rotation and we expect to see a significant surplus develop in the coming week. To manage this we will start to drop paddocks for silage so as to maintain a rotation close to 26 days, grazing at 2 leaf stage. R2 heifers currently grazing the run off block will be used to graze low quality residuals on the milking platform as required. The calves and R2 heifers were weighed this week. Any calf over 90 kg (crossbreds) or 100 kg (Friesian) has been weaned. To date, 85 calves have been weaned. The average weight of the R2 heifers was 318 kg which is on target for crossbreds. The growth rate of the R2 heifers has been 1.3 kg/day over the last 2 months.

12 November 2013

