

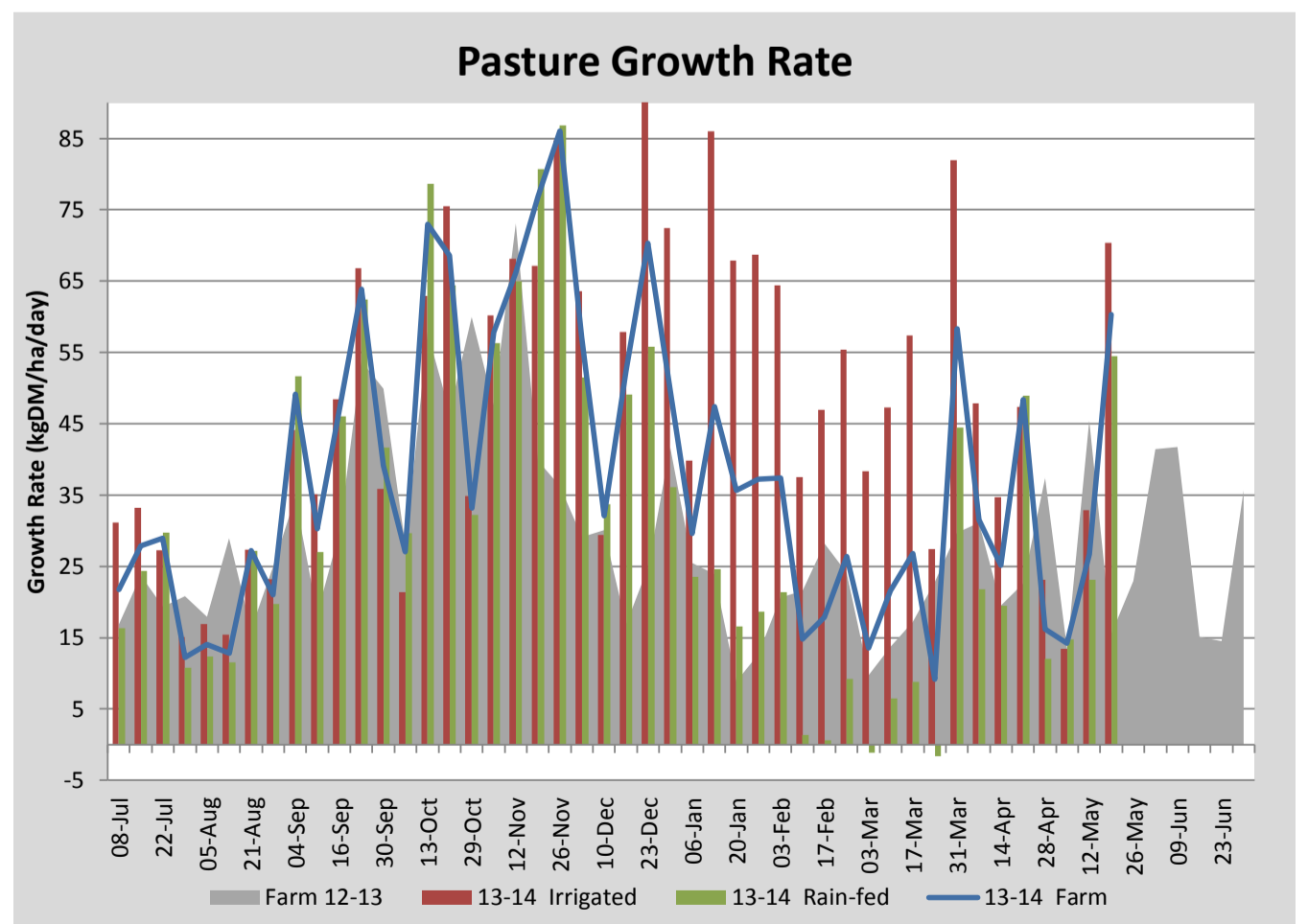
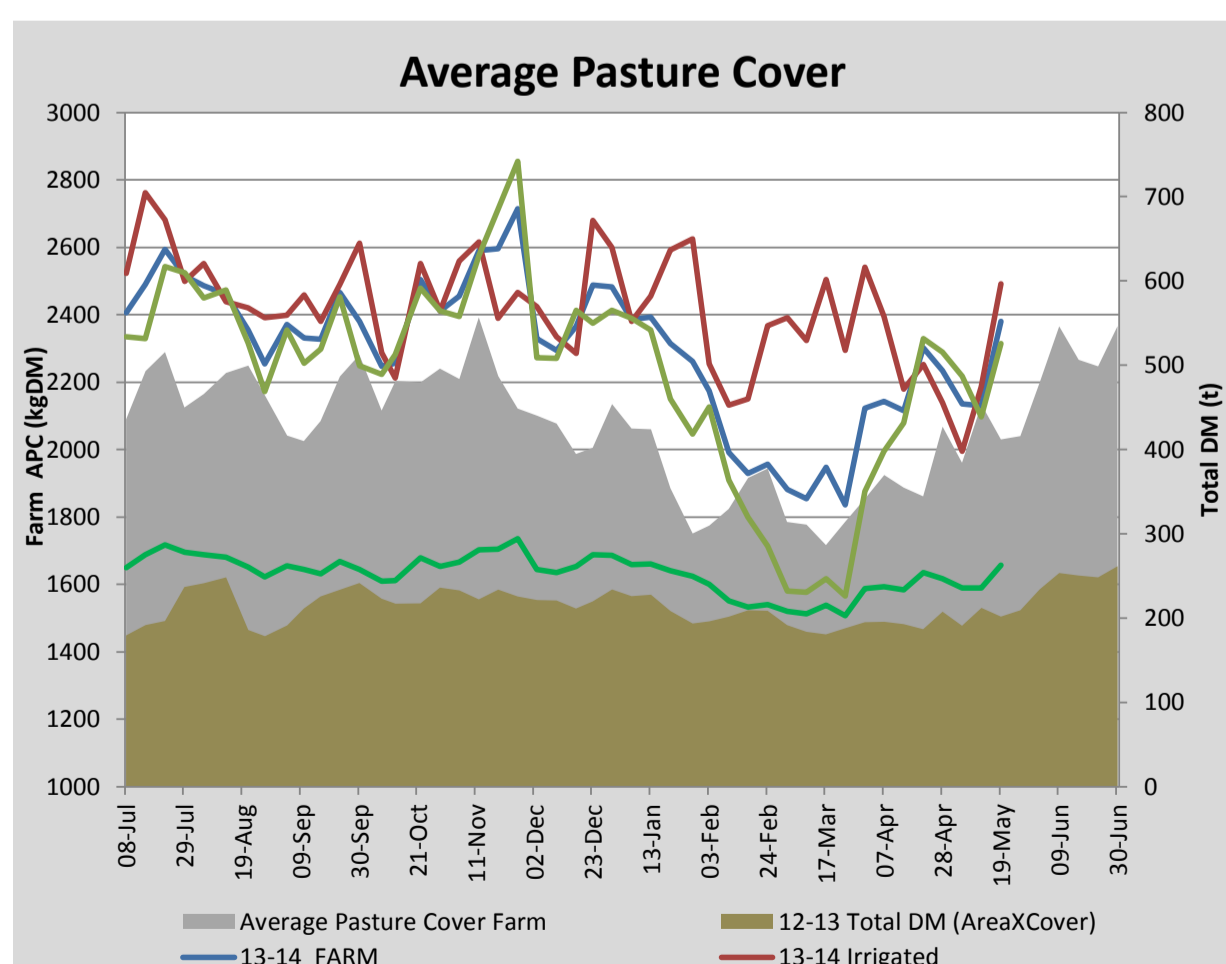
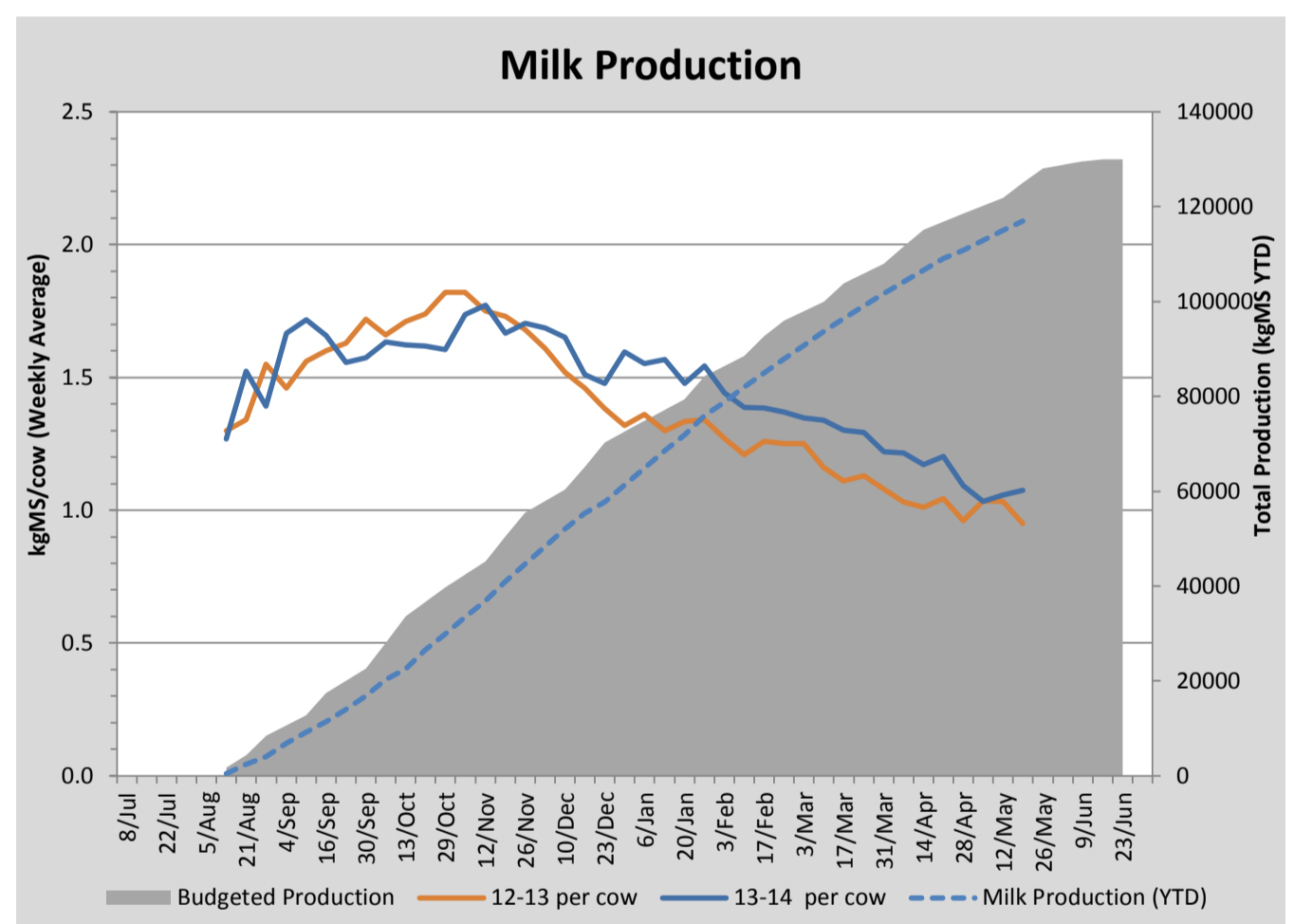
Key Summary Points

- 1 Average pasture cover has built significantly this week to 2380kgDM/ha due to milder weather conditions and good responses to urea applications.
- 2 Per cow milk solid production continues to hold with this week a 1.07kgMS/day.
- 3 Key focus for the coming week is to condition score cows prior to dry-off.

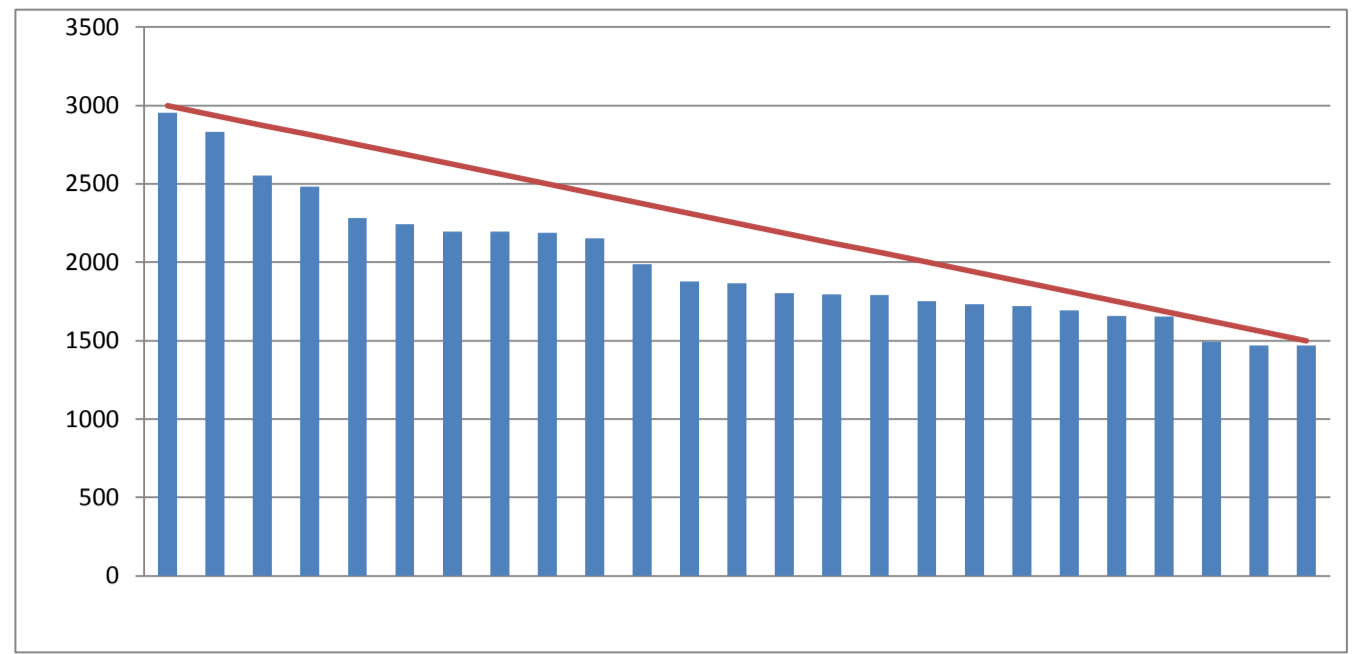
PASTURE INFORMATION	Farm			Irrigated			Rain-fed		
	Last Week	This Week	Variation	Last Week	This Week	Variation	Last Week	This Week	Variation
Grazed milking area (ha)	110.5	110.5	0.0	41.0	41.0	0.0	69.5	69.5	0
Rotation Length (days)	74	65	-9	410	68	-342	50	63	14
Grazing allocation per day (ha)	1.5	1.7	0.2	0.1	0.6	0.5	1.4	1.1	-0.3
Average time since last grazed (days)	88	69	-18	61	48	-13	104	82	-22
Leaf appearance rate (days per leaf)	16	16	0	16	16	0	16	16	0
Average Pasture Cover (kgDM/ha)	2130	2380	250	2186	2492	306	2097	2314	216
Pasture Growth Rate (kgDM/ha/day)	27	60	34	33	70	37	23	54	31
Post Grazing Biomass (kgDM/ha)	1414	1503	89						
Nitrogen applied YTD (kgN/ha)	148	154	5	0	3	3	0	7	7

*Please note all pasture calculations detailed above are based on the current Grazed Milking Area

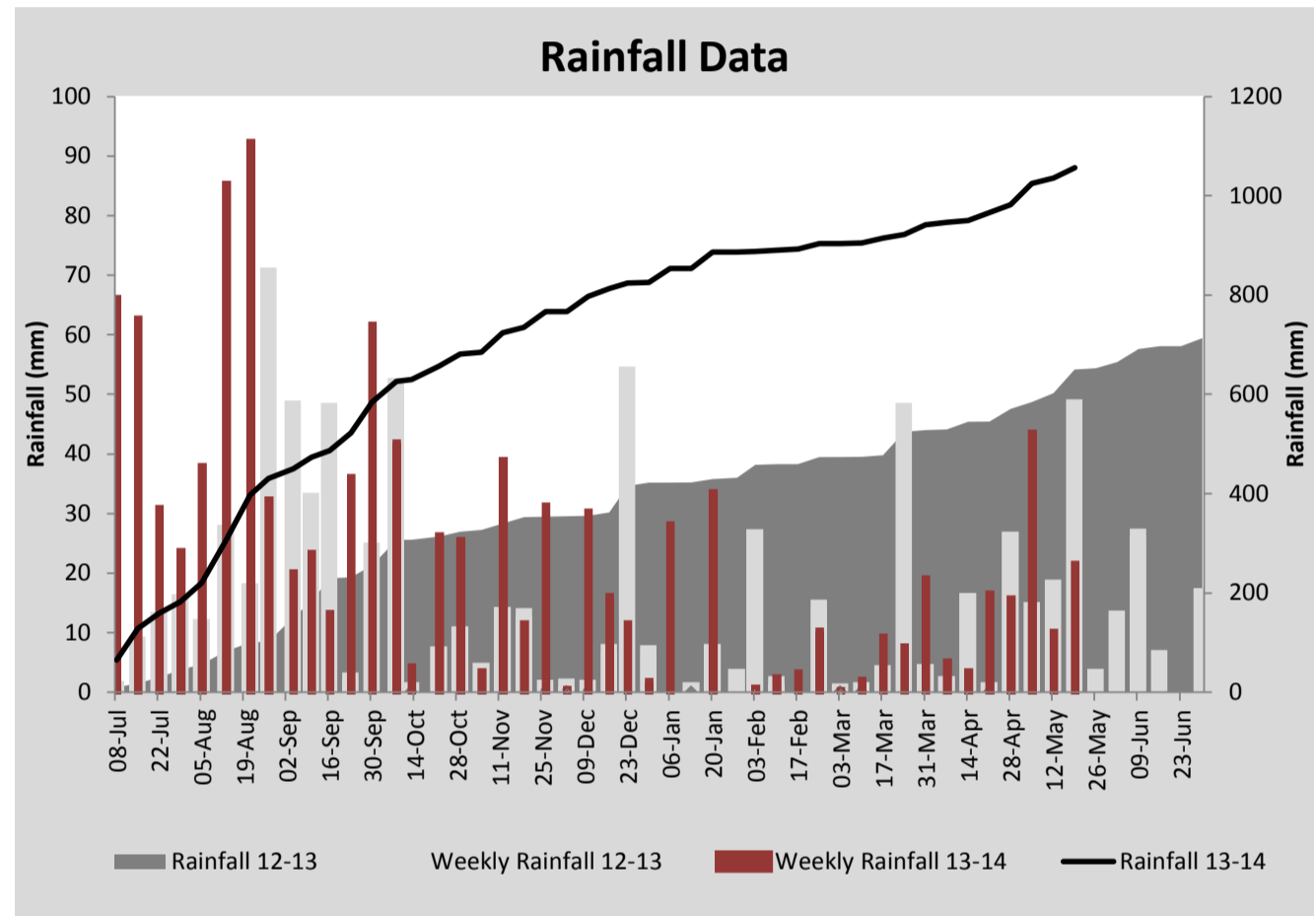
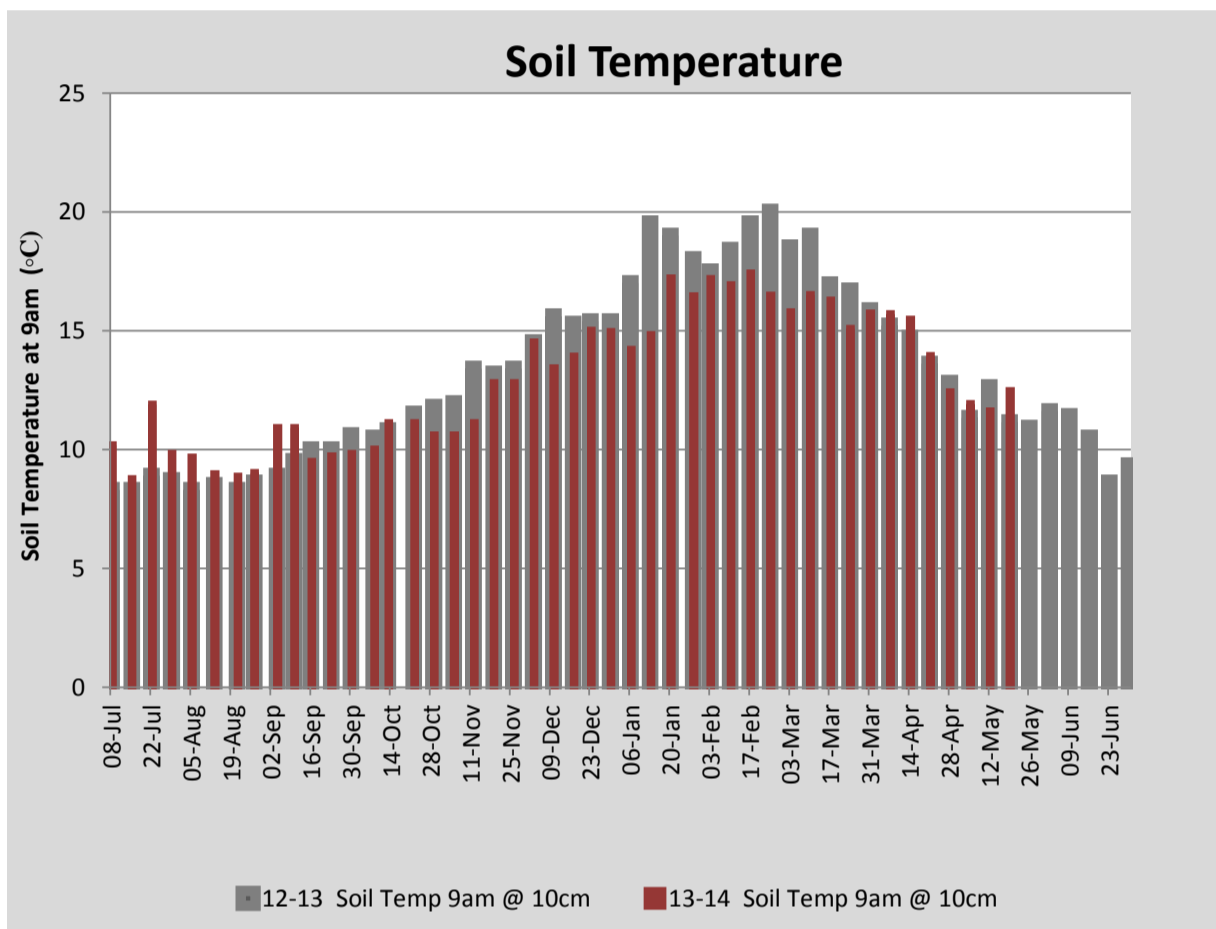
MILK PRODUCTION	Last Week	This Week	Variation
Average No. cows in milk (vat)	285	260	-25
Litres per cow	11.9	12.1	0.2
% Fat	5.05	5.18	0.13
% Protein	3.73	3.65	-0.08
MS/cow/day	1.06	1.07	0.02
MS/ha/day	2.67	2.47	-0.19
BMCC	166	170	4
Average Liveweight (kg)	532	532	0
	Budget	To Date	Variation
Total Milk Production (kgMS)	125,091	116,934	93%
MS/ha YTD	1117	1097	-20



Last 7 days					
Milkers Diet	kg DM	MJ ME	CP (%)	NDF (%)	\$/cow
Pasture Intake	7.0	12.3	21.6	45.6	0.0
Concentrates	5.5	13.0	11.0	21.0	0.0
Silage	2.3	9.5	13.6	54.8	0.0
Grazed forage	0.0	0.0	0.0	0.0	0.0
Other feeds	1.8	8.5	13.6	54.8	0.0
Total	16.5	193.7	16.1	39.7	0
Target		191	16-18	>33	0



Feed wedge for the run-off, APC 2027kgDM/ha



Analysis			
Expected growth rate next 7 days (kgDM/ha/day)	25	Target Leaf Grazing Stage	3.0
Total Demand from Pasture (kgDM/ha/day)	21	Predicted APC 7 days time	2405
APC balance (kgDM/ha/day)	4	Predicted APC Change	25.5

Discussion

Average pasture cover has built significantly this week to 2380kgDM/ha due to milder weather conditions and good responses to urea applications. We hope to hold cover on the milking platform at 2400kgDM/ha this coming week by maintaining a rotation length greater than 60 days. Dry cows are currently grazing on the milking platform to reduce demand on the run-off. Average pasture cover on the run-off is approximately 2027kg. Nitrogen was applied to grazed paddocks (12ha) on the run-off at 30kg/ha. 1.8 ha of Titan forage rape is progressing well and we will look to start feeding this late June/early July. Cows will be body condition scored this coming week to determine what feeding program is required during the dry period to ensure a condition score of between 4.5 and 5.5 at calving.

19 May 2014

