

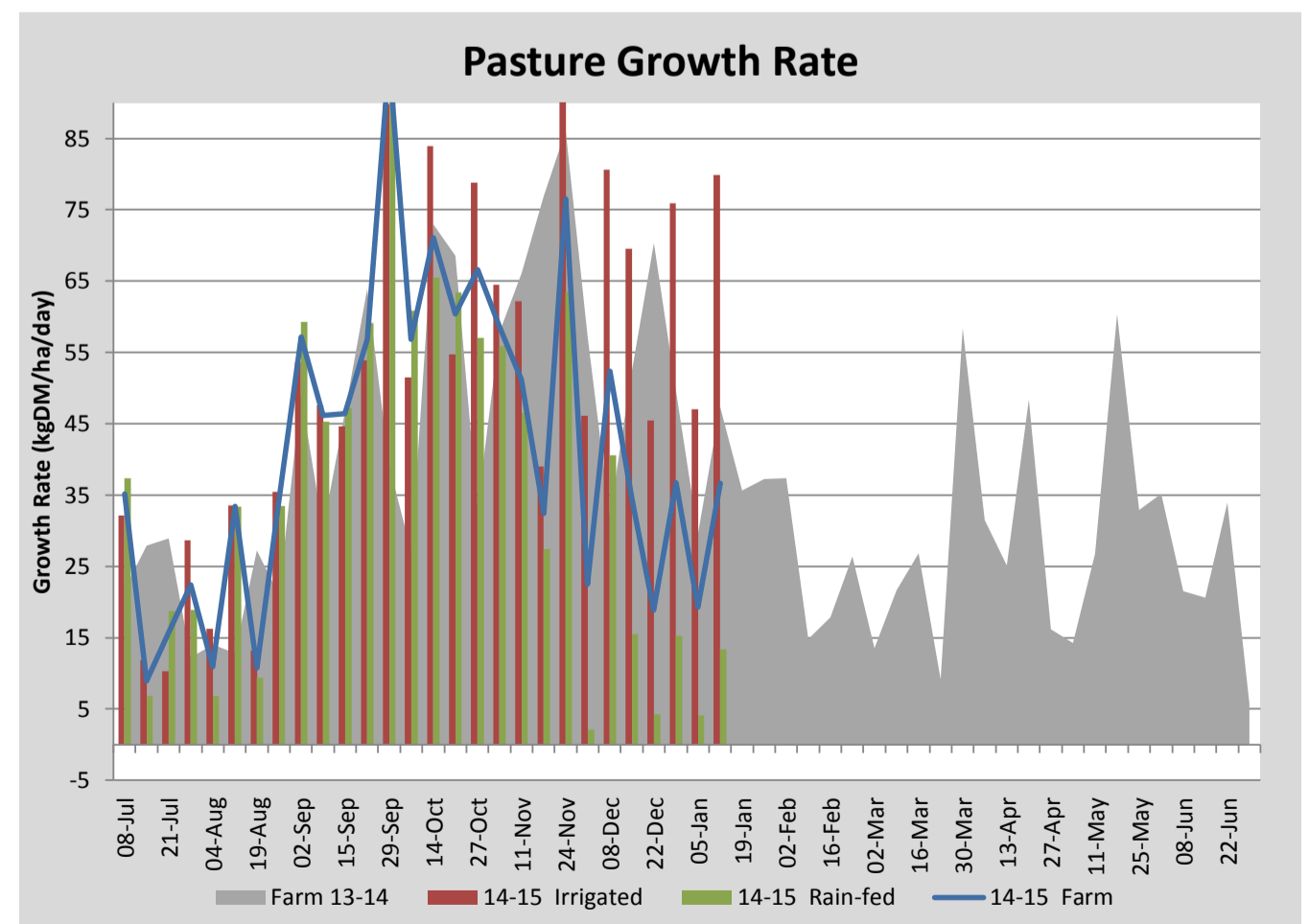
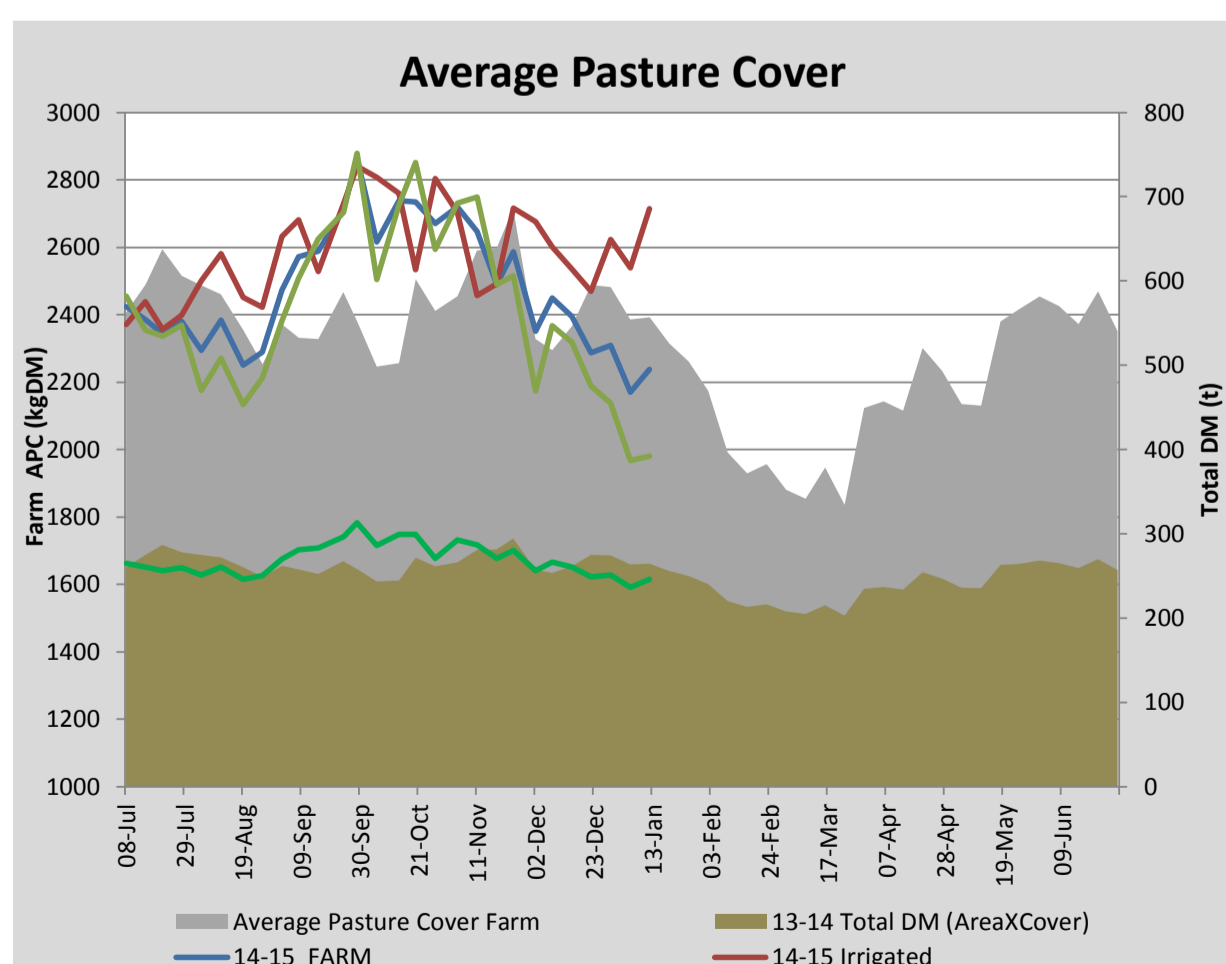
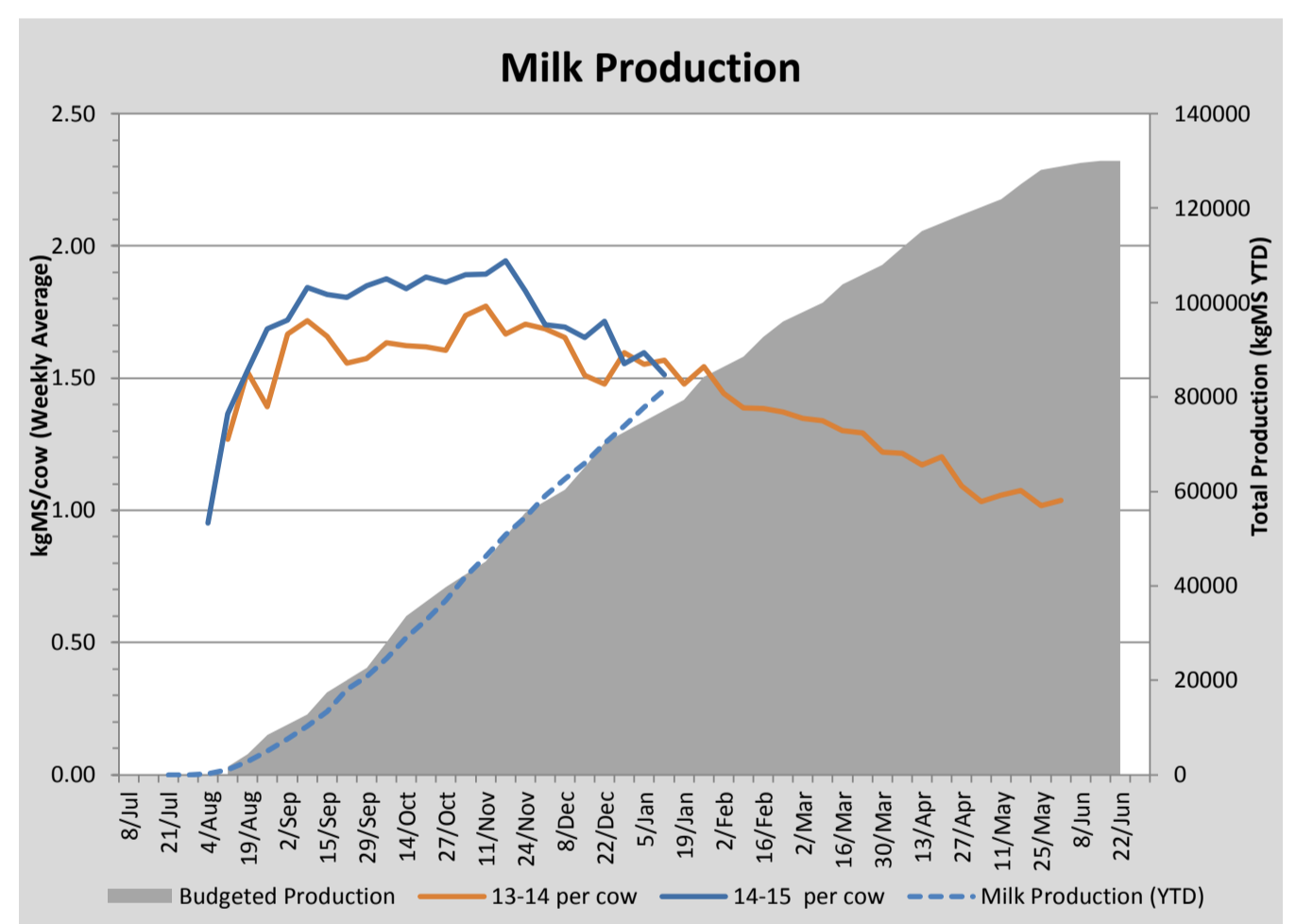
## Key Summary Points

- 1 Average pasture cover built slightly this week to 2237kgDM/ha with 13.6mm of rainfall seeing some limited growth on the dryland paddocks and good responses visible on the irrigated paddocks.
- 2 Per cow MS production has dropped to 1.51kgMS/cow/day.
- 3 Focus for the coming week is to maintain cover on the irrigated paddocks and spray thistles prior to flowering.

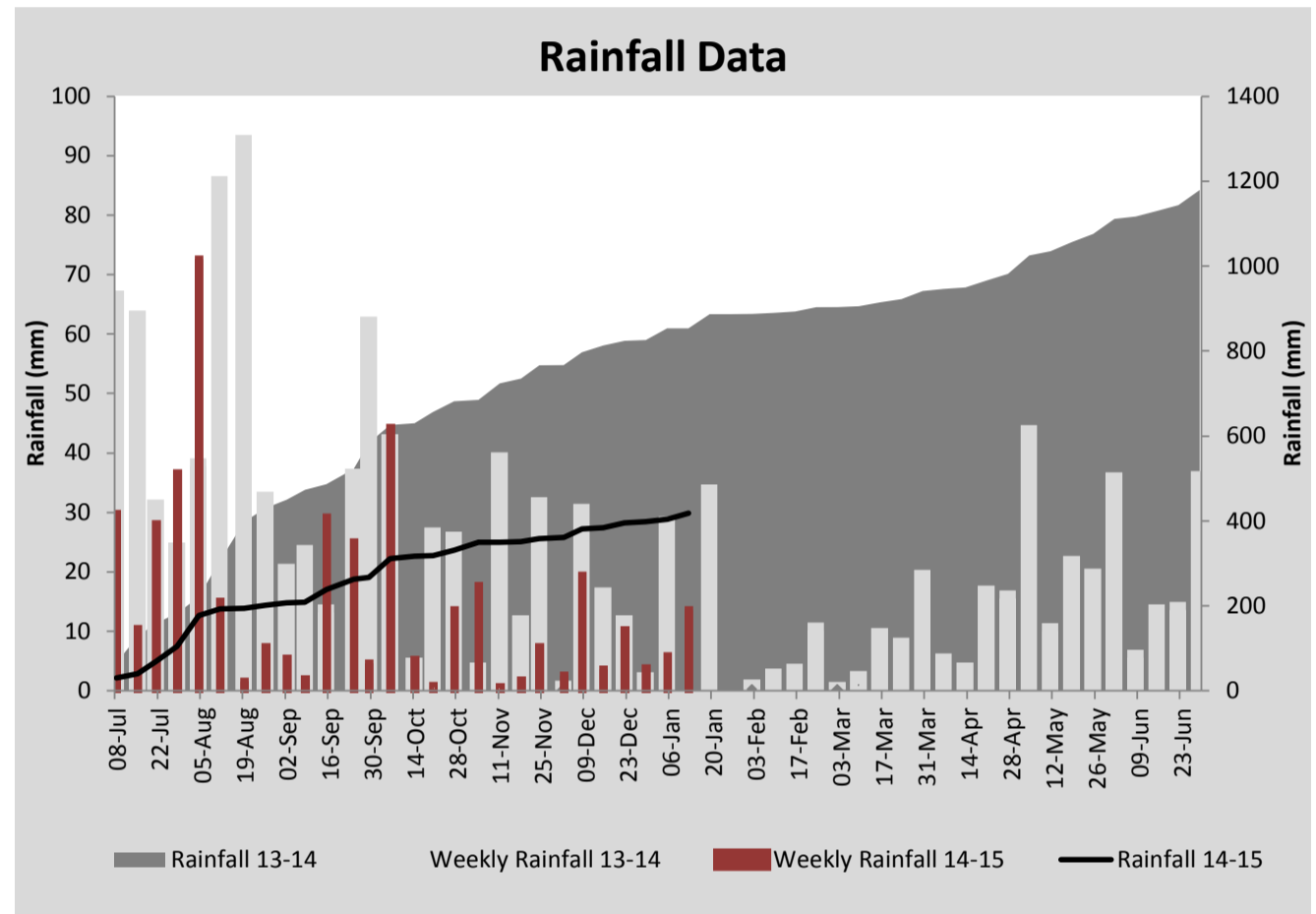
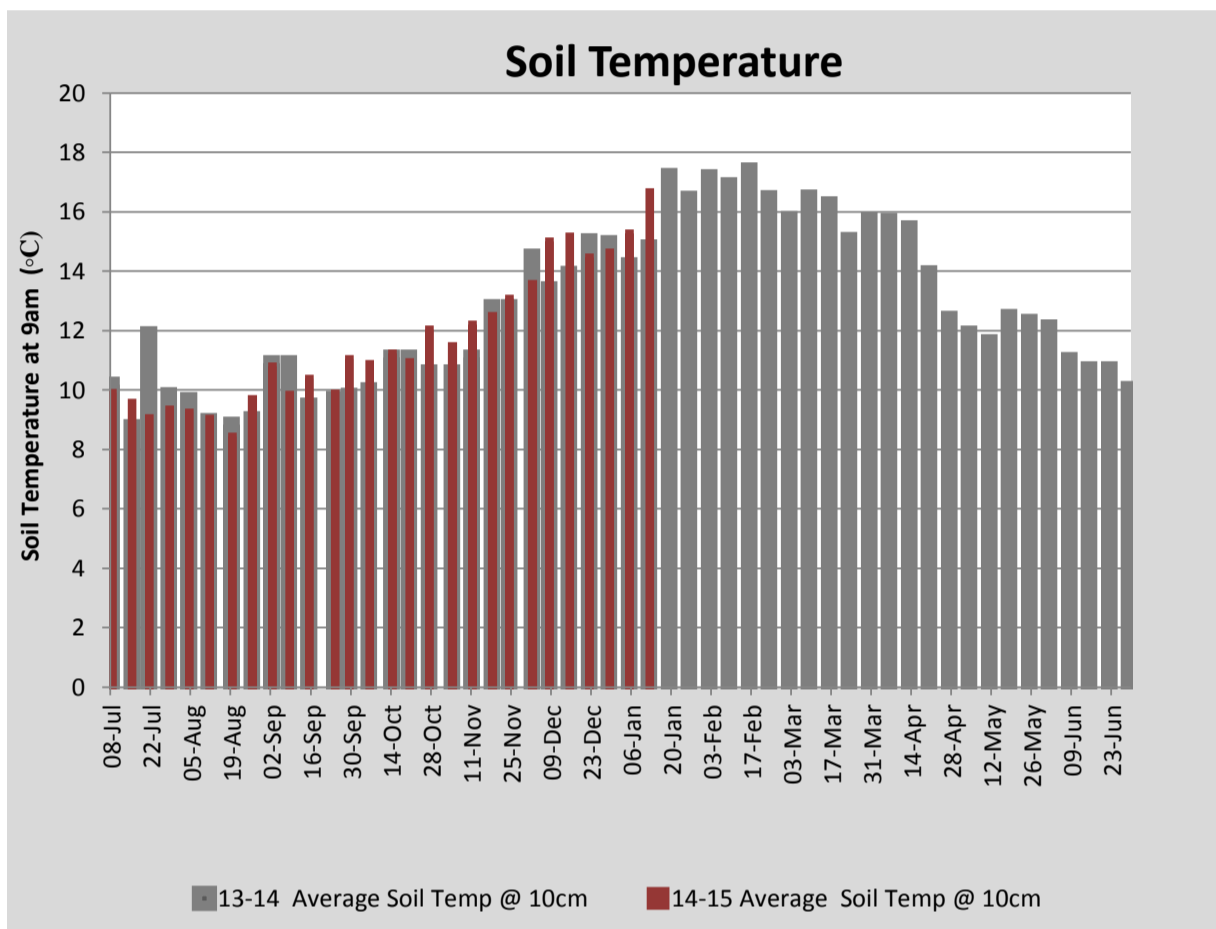
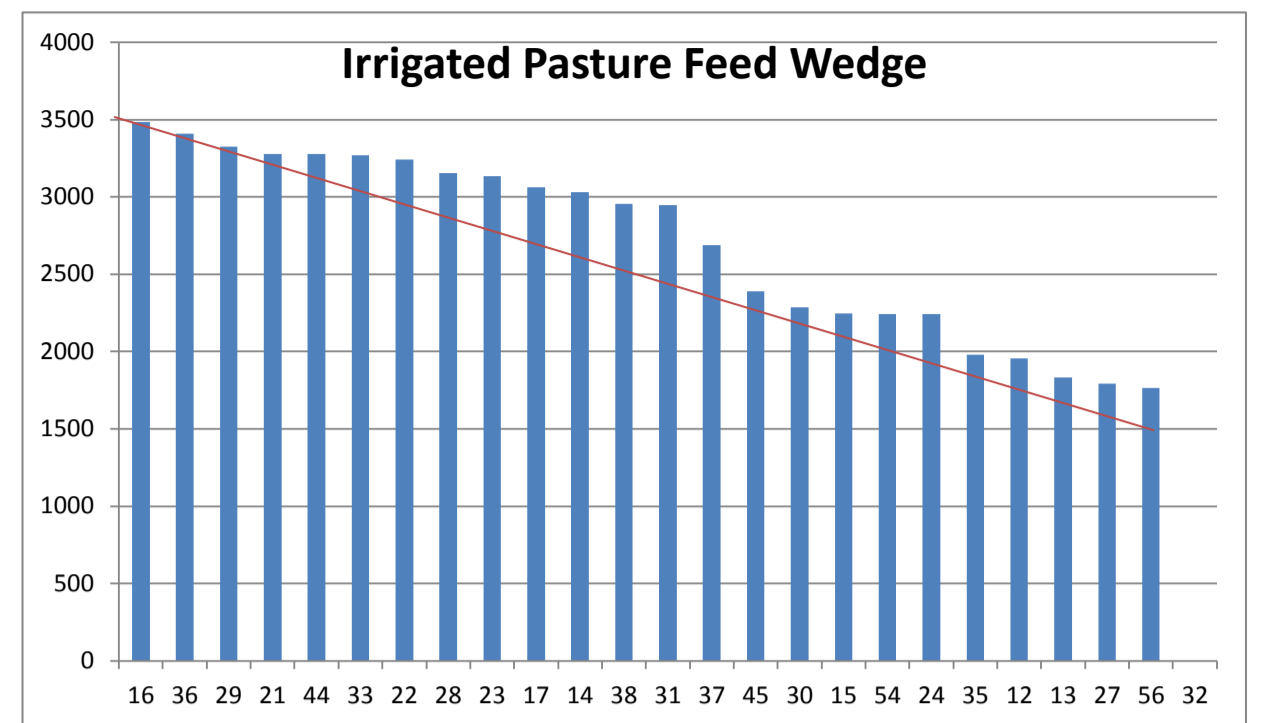
PASTURE INFORMATION	Farm			Irrigated			Rain-fed		
	Last Week	This Week	Variation	Last Week	This Week	Variation	Last Week	This Week	Variation
Grazed milking area (ha)	108.8	109.8	1.0	38.4	38.4	0.0	70.4	71.4	-1
Rotation Length (days)	64	58	-6	30	43	13	176	71	-105
Grazing allocation per day (ha)	1.7	1.9	0.2	1.3	0.9	-0.4	0.4	1.0	0.6
Average time since last grazed (days)	39	43	4	27	29	2	46	51	5
Leaf appearance rate (days per leaf)	11	11	0	10	10	0	12	12	0
Average Pasture Cover (kgDM/ha)	2170	2237	67	2540	2713	174	1968	1980	12
Pasture Growth Rate (kgDM/ha/day)	19	37	17	47	80	33	4	13	9
Post Grazing Biomass (kgDM/ha)	1563	1605	42						
Nitrogen applied YTD (kgN/ha)	119	122	2	0	7	7	0	0	0

\*Please note all pasture calculations detailed above are based on the current Grazed Milking Area

MILK PRODUCTION	Last Week	This Week	Variation
Average No. cows in milk (vat)	359	358	-1
Litres per cow	20.7	19.8	-0.9
% Fat	4.44	4.39	-0.05
% Protein	3.25	3.24	-0.01
MS/cow/day	1.60	1.51	-0.08
MS/ha/day	5.07	4.79	-0.28
BMCC	106	103	
Average Liveweight (kg)	497	497	
	Budget	To Date	Variation
Total Milk Production (kgMS)	77,137	81,539	106%
MS/ha YTD	689	788	99



Last 7 days					
Milkers Diet	kg DM	MJ ME	CP (%)	NDF (%)	\$/cow
Pasture Intake	7.9	10.5	18.5	50.2	0.0
Concentrates	5.0	12.8	12.3	16.5	0.0
Silage	3.6	11.0	15.0	49.0	0.0
Grazed forage	0.0	0.0	0.0	0.0	0.0
Other feeds	0.0	0.0	0.0	0.0	0.0
<b>Total</b>	<b>16.5</b>	<b>186.5</b>	<b>15.9</b>	<b>39.7</b>	<b>0</b>
<b>Target</b>		<b>191</b>	<b>16-18</b>	<b>&gt;33</b>	<b>0</b>



Analysis			
Expected growth rate next 7 days (kgDM/ha/day)	26	Target Leaf Grazing Stage	2.5-3.0
Total Demand from Pasture (kgDM/ha/day)	30	Predicted APC 7 days time	2207
APC balance (kgDM/ha/day)	-4	Predicted APC Change	-29.9

## Discussion

Average pasture cover built slightly this week to 2237kgDM/ha with 13.6mm of rainfall seeing some limited growth on the dryland paddocks (13kgDM/ha/day) and good responses were visible on the irrigated paddocks (80kgDM/ha/day). With cover holding well, we will look to shorten the rotation slightly this coming week and reduce the silage in the ration in order to preserve feed reserves. 4ha of kale winter crop was planted this week which was direct drilled into the stubble of the pea and oat silage crop. Unproductive trial plots under irrigation (residual from the More Milk From Forages study) were drilled with Base perennial ryegrass. Per cow milk solid production declined slightly this week to 1.51kgMS/cow/day due to the reduction in daily dry matter allocation to 16.5kgDM (total). Pasture allocation for the R2 heifers has been restricted to 8kgDM/head/day and they are currently being used to clean up rough paddocks and laneways on the run-off. Heifers will be preg tested this coming week to determine the 6-week in calf rate. The focus for the coming week is maintain cover on the irrigated paddocks and spray thistles prior to flowering.

# 12 January 2015

