

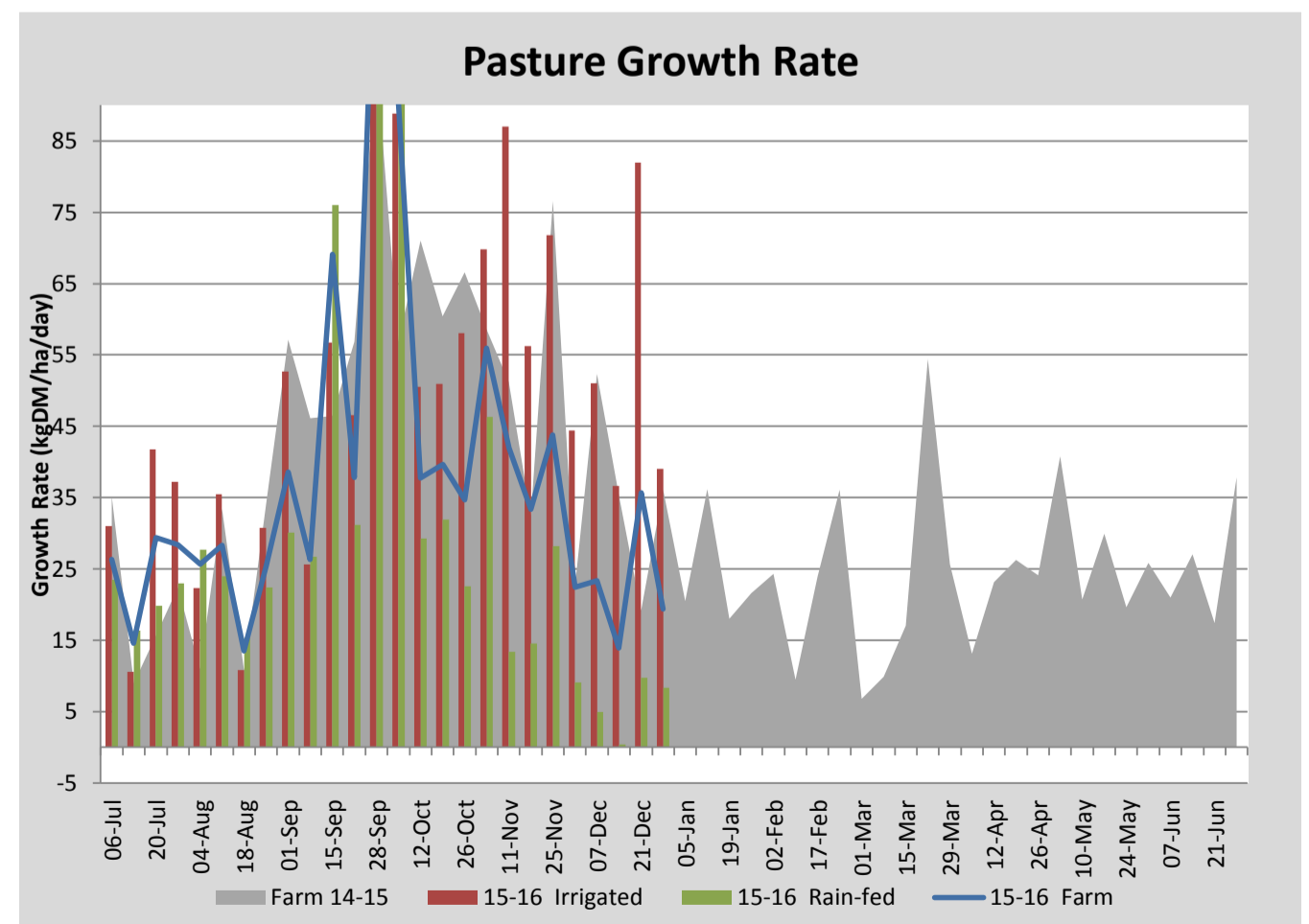
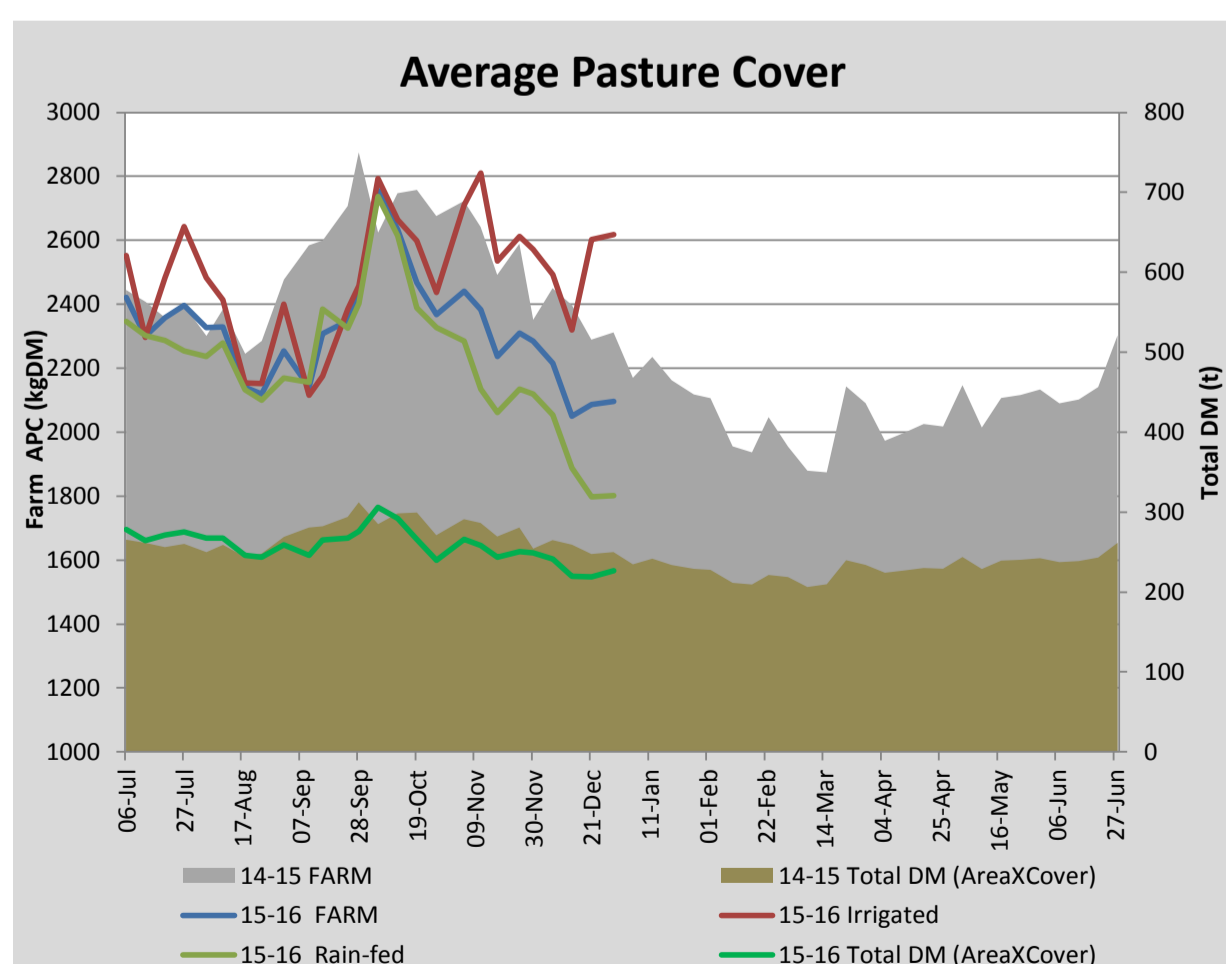
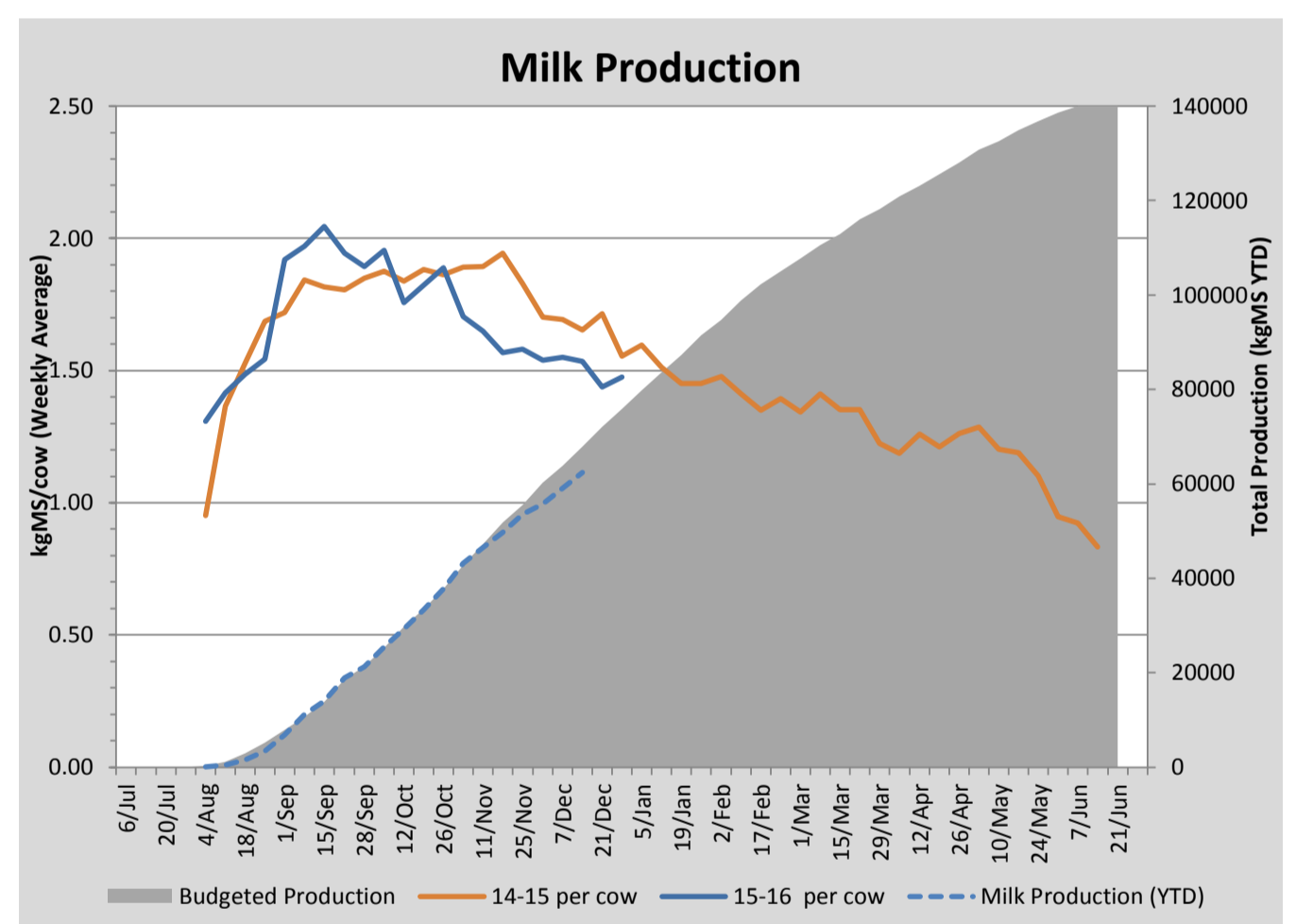
## Key Summary Points

<b>1</b>	14 mm of rainfall was received during the week which assists with topping-up soil moisture under irrigation but has very little impact on rain-fed pastures.
<b>2</b>	Irrigation water is becoming low but the irrigated pasture is still being fully irrigated.
<b>3</b>	Milk production and cow liveweight are relatively stable.

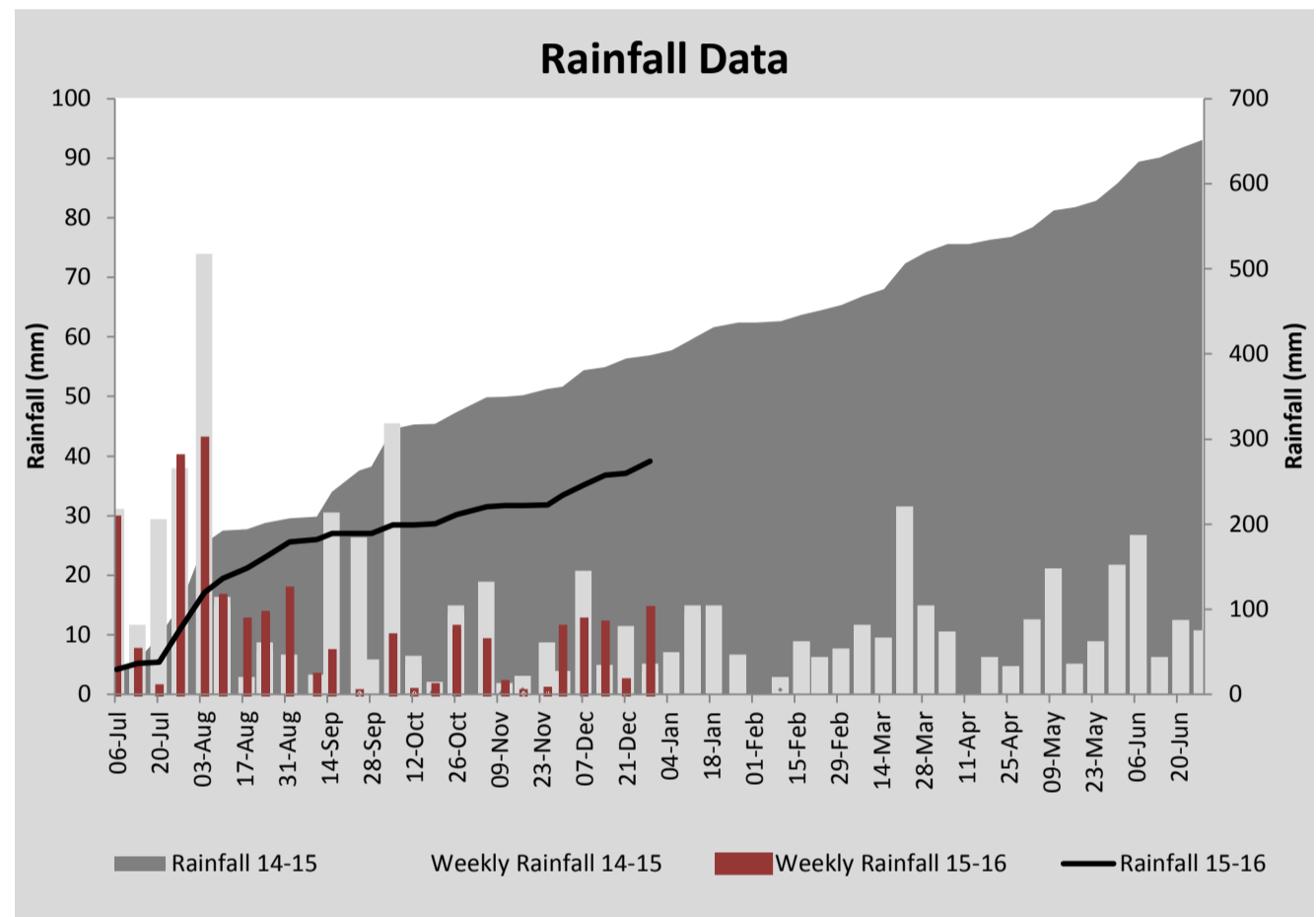
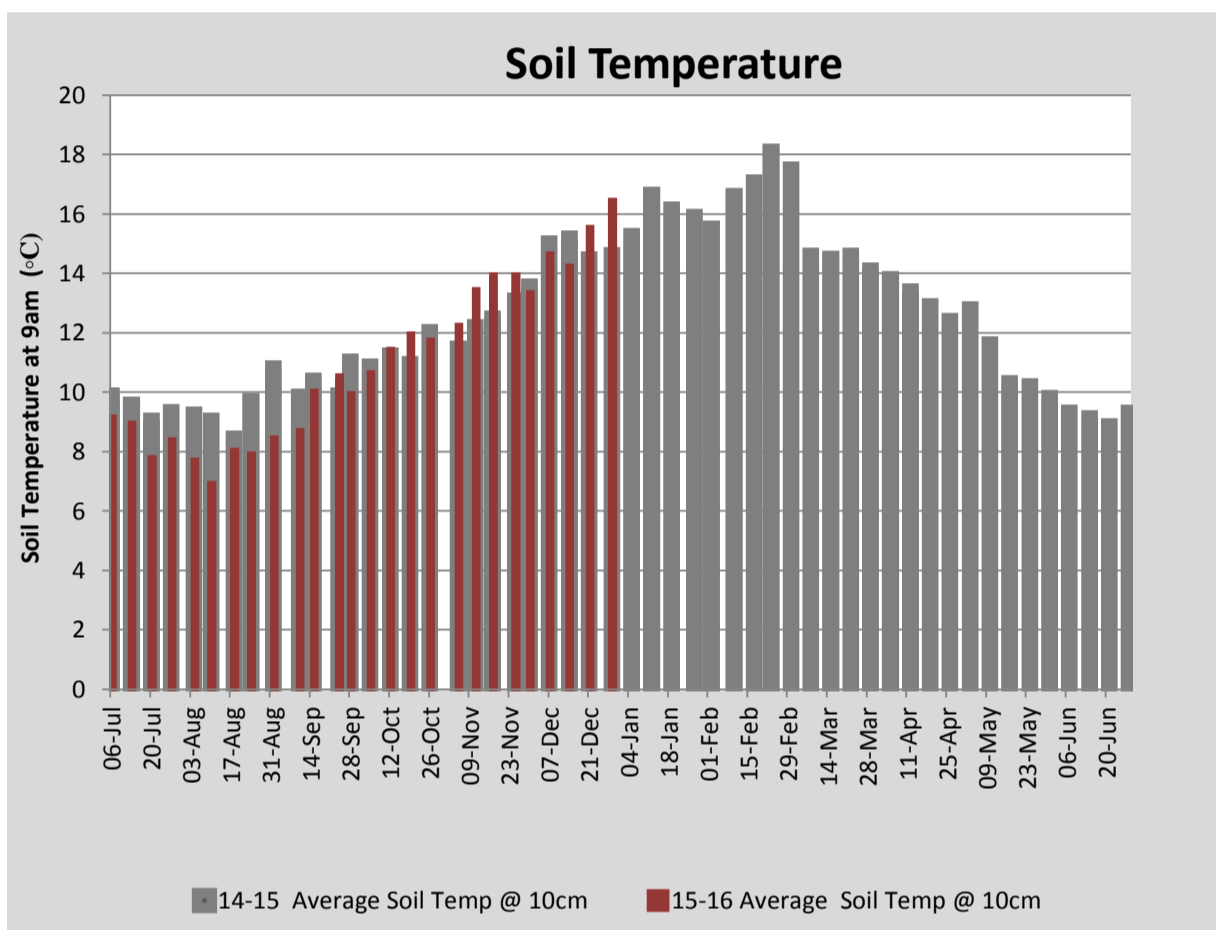
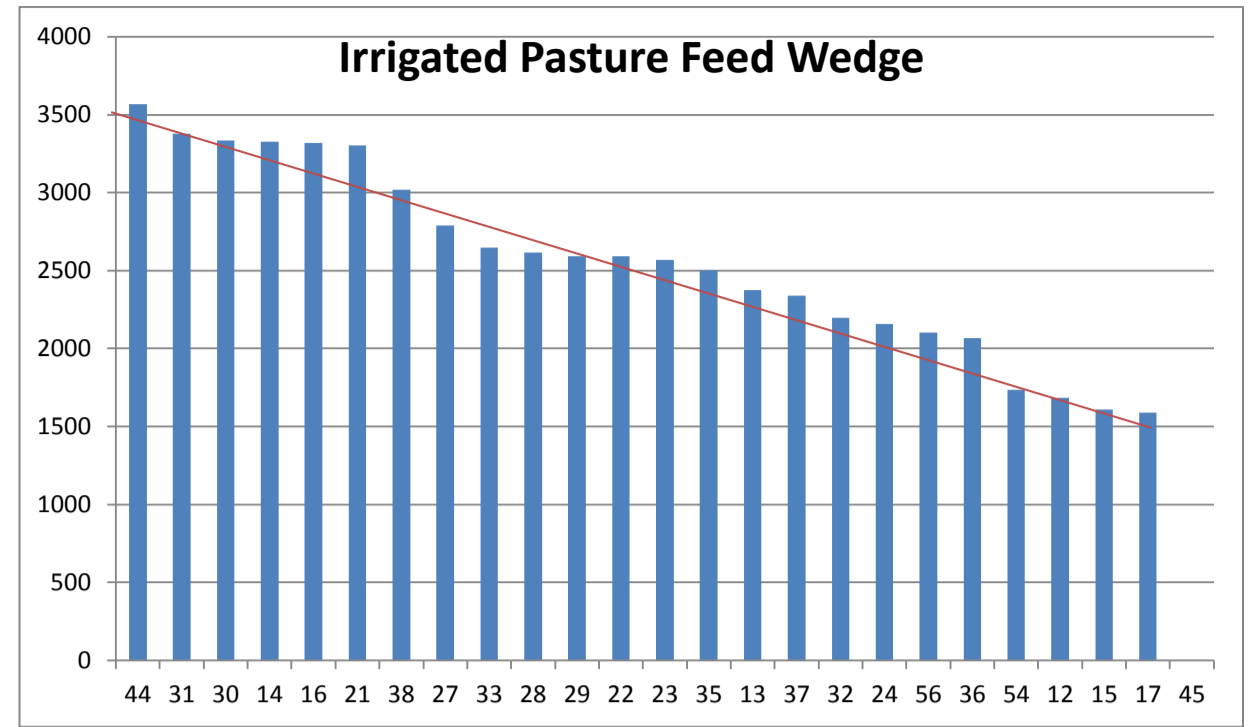
PASTURE INFORMATION	Farm			Irrigated			Rain-fed		
	Last Week	This Week	Variation	Last Week	This Week	Variation	Last Week	This Week	Variation
Grazed milking area (ha)	105.1	107.9	2.9	42.2	39.0	-3.2	65.8	68.9	3
Rotation Length (days)	50	67	18	41	48	7	57	88	31
Grazing allocation per day (ha)	2.1	1.6	-0.5	0.9	0.8	-0.1	1.2	0.8	-0.4
Average time since last grazed (days)	50	57	7	30	35	6	62	70	8
Leaf appearance rate (days per leaf)	14	16	2	11	12	1	16	18	2
Average Pasture Cover (kgDM/ha)	2087	2097	10	2603	2619	15	1798	1802	3
Pasture Growth Rate (kgDM/ha/day)	36	19	-16	82	39	-43	10	8	-1
Post Grazing Biomass (kgDM/ha)	1470	1470	0						
Nitrogen applied YTD (kgN/ha)	61	61	0	0	0	0	0	0	0

\*Please note all pasture calculations detailed above are based on the current Grazed Milking Area

MILK PRODUCTION	Last Week	This Week	Variation
Average No. cows in milk (vat)	309	303	-6
Litres per cow	19.0	19.3	0.3
% Fat	4.27	4.26	-0.01
% Protein	3.36	3.37	0.01
MS/cow/day	1.44	1.48	0.04
MS/ha/day	3.93	3.96	0.02
BMCC	145,667	113,571	-32,095
Average Liveweight (kg)	485	481	-4
	Budget	To Date	Variation
Total Milk Production (kgMS)	75,864	69,087	91%
MS/ha YTD	665	653	-12



Last 7 days					
Milkers Diet	kg DM	MJ ME	CP (%)	NDF (%)	\$/cow
Pasture Intake	7.2	0.0	0.0	0.0	0.0
Concentrates	8.0	12.5	16.0	16.5	0.0
Silage	1.8	0.0	0.0	0.0	0.0
Grazed forage	1.0	0.0	0.0	0.0	0.0
Other feeds	0.0	0.0	0.0	0.0	0.0
<b>Total</b>	<b>18</b>	<b>100</b>	<b>7.1</b>	<b>7.3</b>	<b>0</b>
<b>Target</b>		<b>191</b>	<b>16-18</b>	<b>&gt;33</b>	<b>0</b>



Analysis			
Expected growth rate next 7 days (kgDM/ha/day)	19	Target Leaf Grazing Stage	2.5-3.0
Total Demand from Pasture (kgDM/ha/day)	21	Predicted APC 7 days time	2084
APC balance (kgDM/ha/day)	-2	Predicted APC Change	-13.3

## Discussion

The rainfall this week was very welcome and has assisted in topping-up soil moisture levels on the irrigated area. Irrigated pasture growth rates decreased significantly from last week but looking at the rolling average, the high growth rate measured last week appears to be an anomaly. Nitrogen continues to be applied to irrigated pasture following grazing at a rate of 40 kg N/ha. Irrigation water storages are becoming low. Irrigated pasture continues to be irrigated fully rather than deficit irrigation strategies being implemented. This decision was made due to low amount of rainfall forecast (deficit irrigation works most effectively when there are more frequent rainfall events to top-up soil moisture). Once water reserves are depleted, the fixed irrigation and K-line irrigation will be turned-off. The bore should be able to provide enough water to continue using the centre pivot irrigator. Despite the heat, milk production and cow liveweight is relatively stable, although milk production is about 7000 kg MS below this time last year. Cows and heifers will be pregnancy tested in mid January to determine which cows will calve early in the calving period. This information is particularly useful in a season like this when it is likely early culling decisions will need to be made.

# 29 December 2015

