

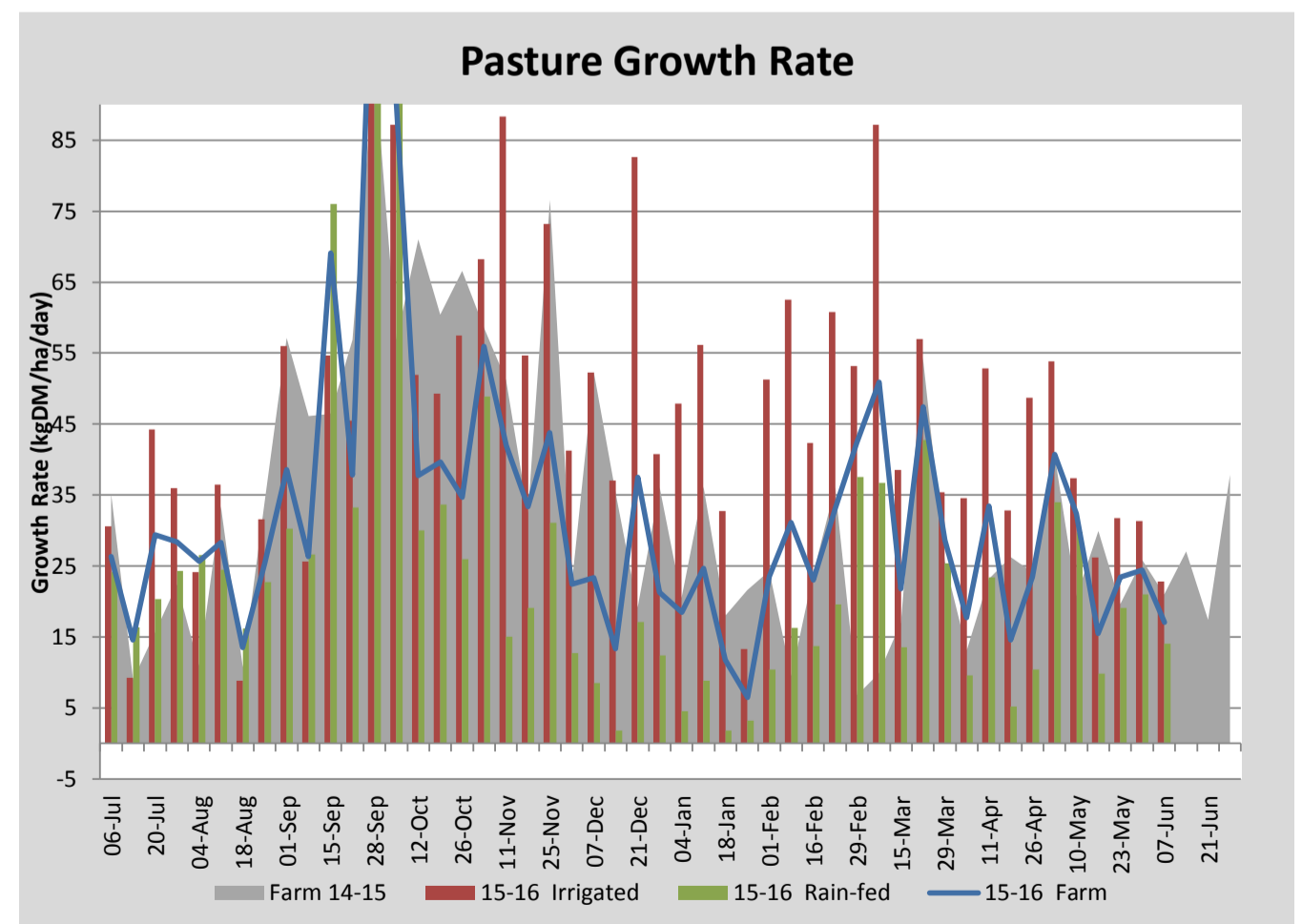
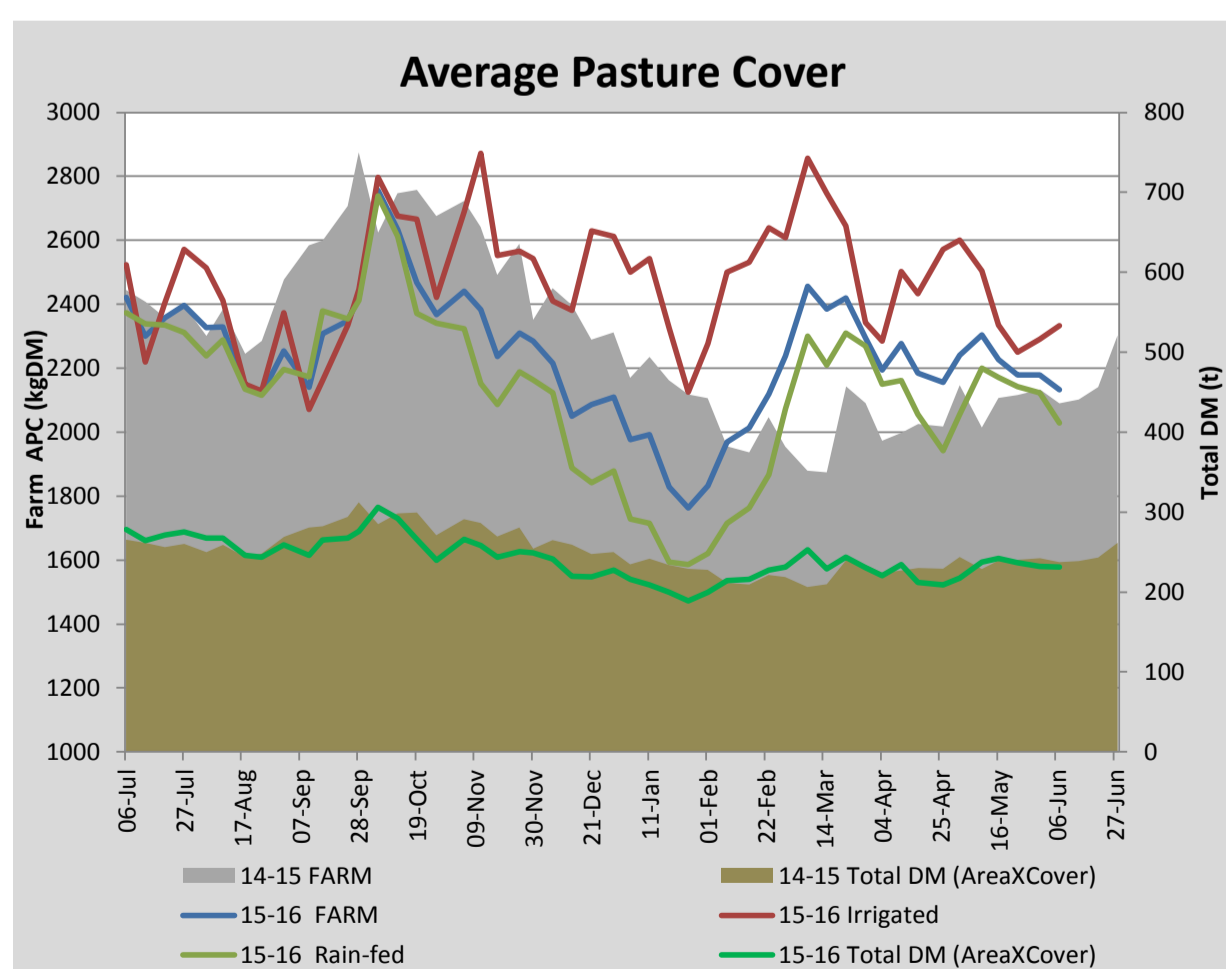
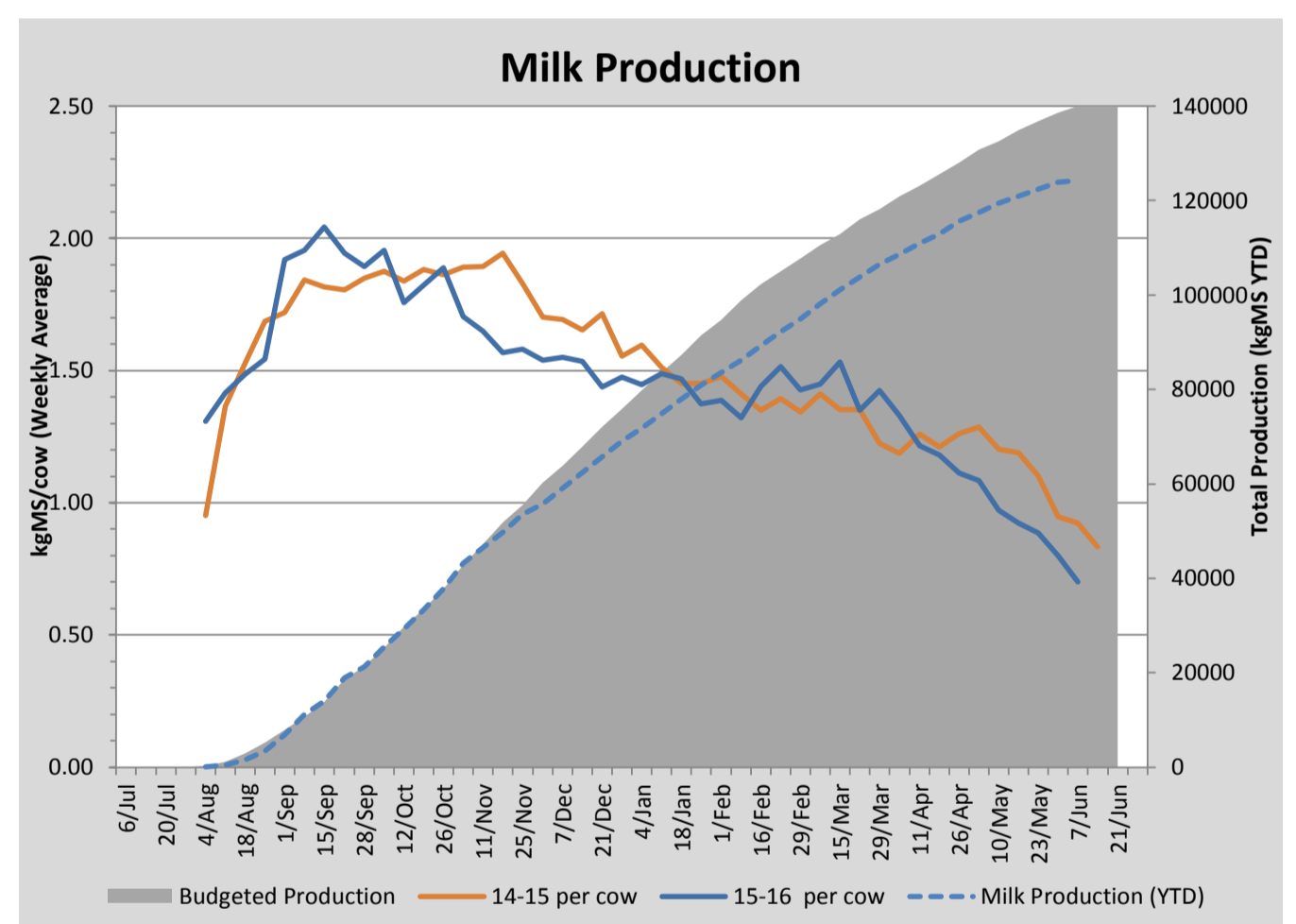
Key Summary Points

- 1** Average pasture cover decreased slightly this week to 2132kgDM/ha.
- 2** All remaining cows were dried off this week.
- 3** Focus for the coming week is to transition cows onto the forage rape crop and prepare calving sheds for the coming season.

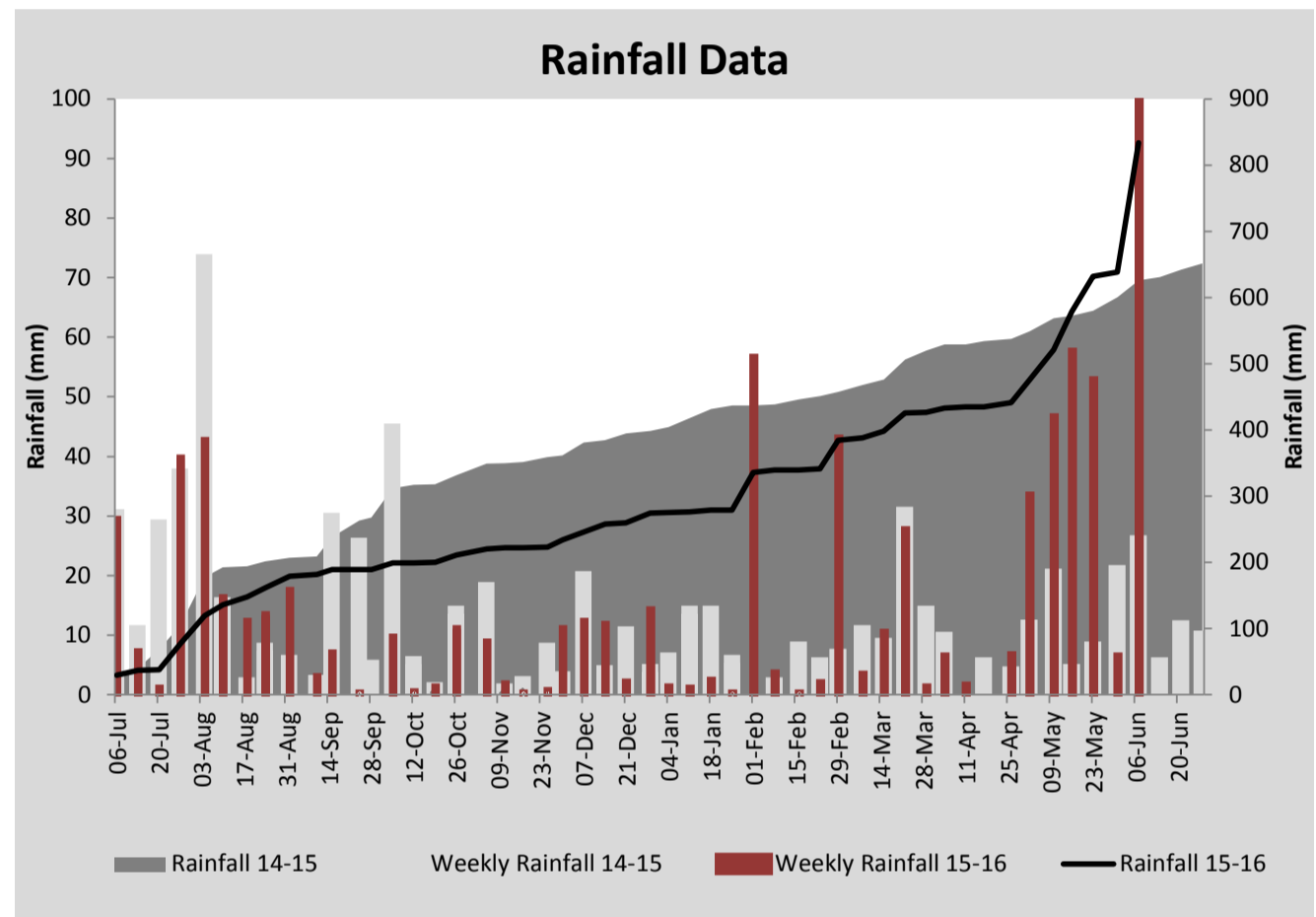
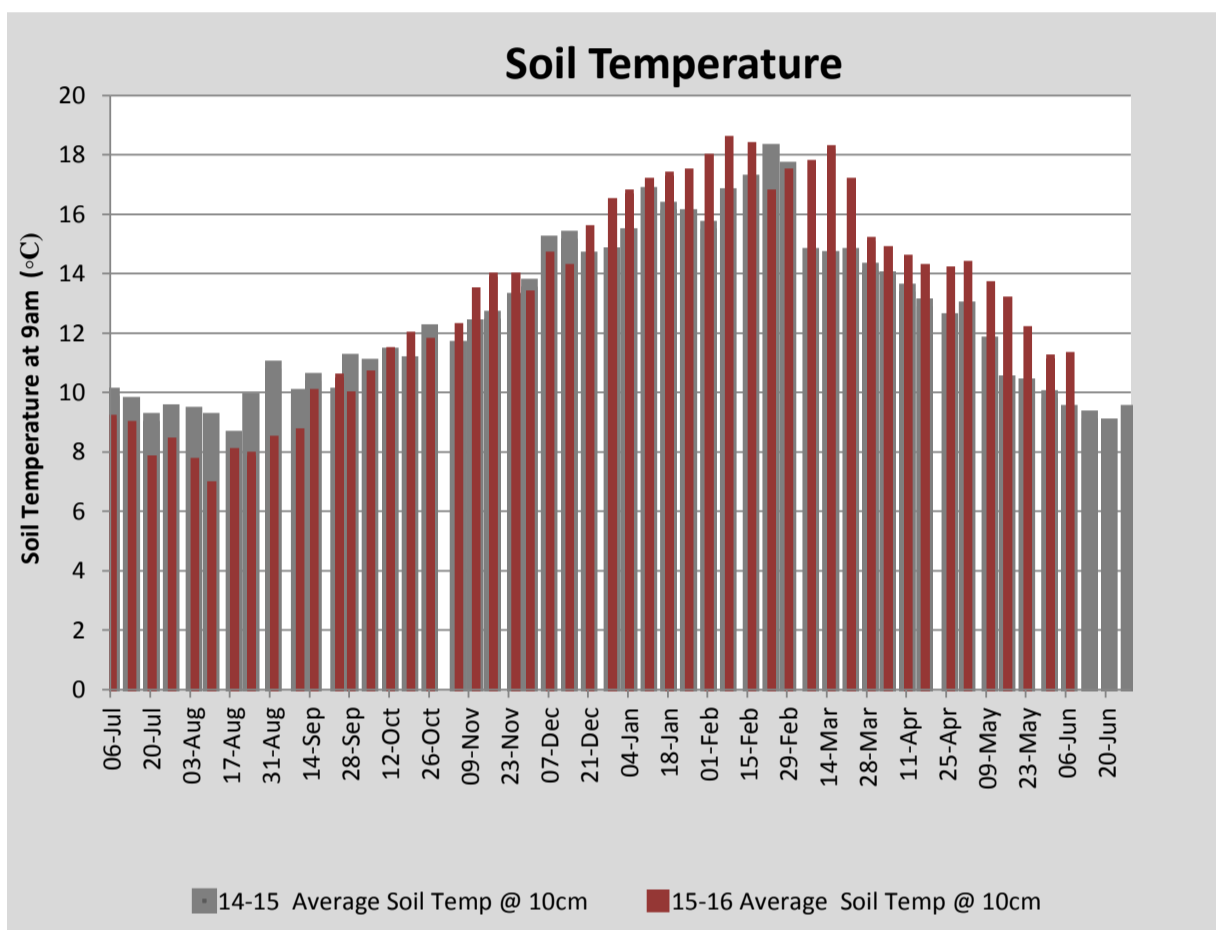
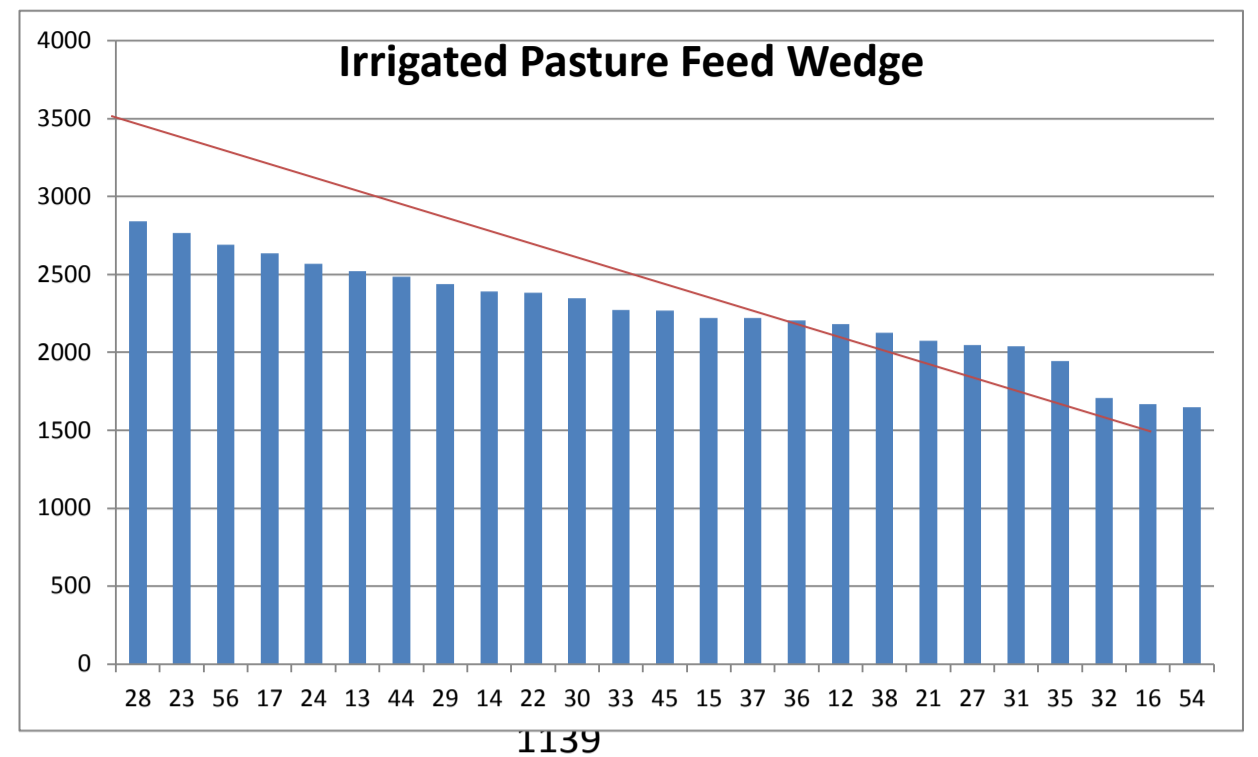
PASTURE INFORMATION	Farm			Irrigated			Rain-fed		
	Last Week	This Week	Variation	Last Week	This Week	Variation	Last Week	This Week	Variation
Grazed milking area (ha)	106.5	108.6	2.1	37.2	37.2	0.0	71.5	71.5	0
Rotation Length (days)	41	57	16	19	52	34	98	60	-38
Grazing allocation per day (ha)	2.6	1.9	-0.7	1.9	0.7	-1.2	0.7	1.2	0.5
Average time since last grazed (days)	42	41	-1	40	36	-4	43	44	1
Leaf appearance rate (days per leaf)	17	17	0	17	17	0	17	17	0
Average Pasture Cover (kgDM/ha)	2179	2132	-46	2291	2333	43	2124	2028	-96
Pasture Growth Rate (kgDM/ha/day)	24	17	-7	31	23	-9	21	14	-7
Post Grazing Biomass (kgDM/ha)	1500	1500	0						
Nitrogen applied YTD (kgN/ha)	90	107	17	0	9	9	0	21	21

*Please note all pasture calculations detailed above are based on the current Grazed Milking Area

MILK PRODUCTION	Last Week	This Week	Variation
Average No. cows in milk (vat)	231	231	0
Litres per cow	7.6	7.1	-0.5
% Fat	5.90	5.45	-0.45
% Protein	4.55	4.40	-0.15
MS/cow/day	0.80	0.70	-0.10
MS/ha/day	1.76	1.51	-0.25
BMCC	264,571	214,500	-50,071
Average Liveweight (kg)	510	513	3
	Budget	To Date	Variation
Total Milk Production (kgMS)	140,000	124,196	89%
MS/ha YTD	1228	1139	-89



Last 7 days					
Milkers Diet	kg DM	MJ ME	CP (%)	NDF (%)	\$/cow
Pasture Intake	9.0	12.0	19.0	48.0	0.0
Concentrates	1.0	12.9	15.6	20.3	0.0
Silage	0.0	0.0	0.0	0.0	0.0
Grazed forage	0.0	0.0	0.0	0.0	0.0
Other feeds	0.0	0.0	0.0	0.0	0.0
Total	10	120.9	18.7	45.2	0
Target		90	16-18	>33	0



Analysis			
Expected growth rate next 7 days (kgDM/ha/day)	20	Target Leaf Grazing Stage	2.5-3.0
Total Demand from Pasture (kgDM/ha/day)	17	Predicted APC 7 days time	2152
APC balance (kgDM/ha/day)	3	Predicted APC Change	19.5

Discussion

Average pasture cover decreased to 2132kgDM/ha this week, with reduced growth rates measured across the milking platform. Elliott received 196mm rainfall during the week with the majority of this falling on Sunday evening. We have some minor damage to spill ways and creek crossings but overall have mostly escaped unharmed. All remaining in milk cows were dried off this week. Cows with SCC above 140,000 or having had mastitis during the lactation were treated with Elaclox DTX dry cow therapy. Dry cows will be sent to the runoff this coming week and will be transitioned onto forage rape. The ration will be made up of 1kgDM pasture, 4kgDM straw and 3kgDM rape giving a total ration of 8 kgDM. We will gradually increase the rape component over the coming week to 7kgDM giving a total DM allocation of 12kgDM/cow/day. Other work being completed on farm at the moment includes preparation of calf sheds for the coming season.

7 June 2016

