

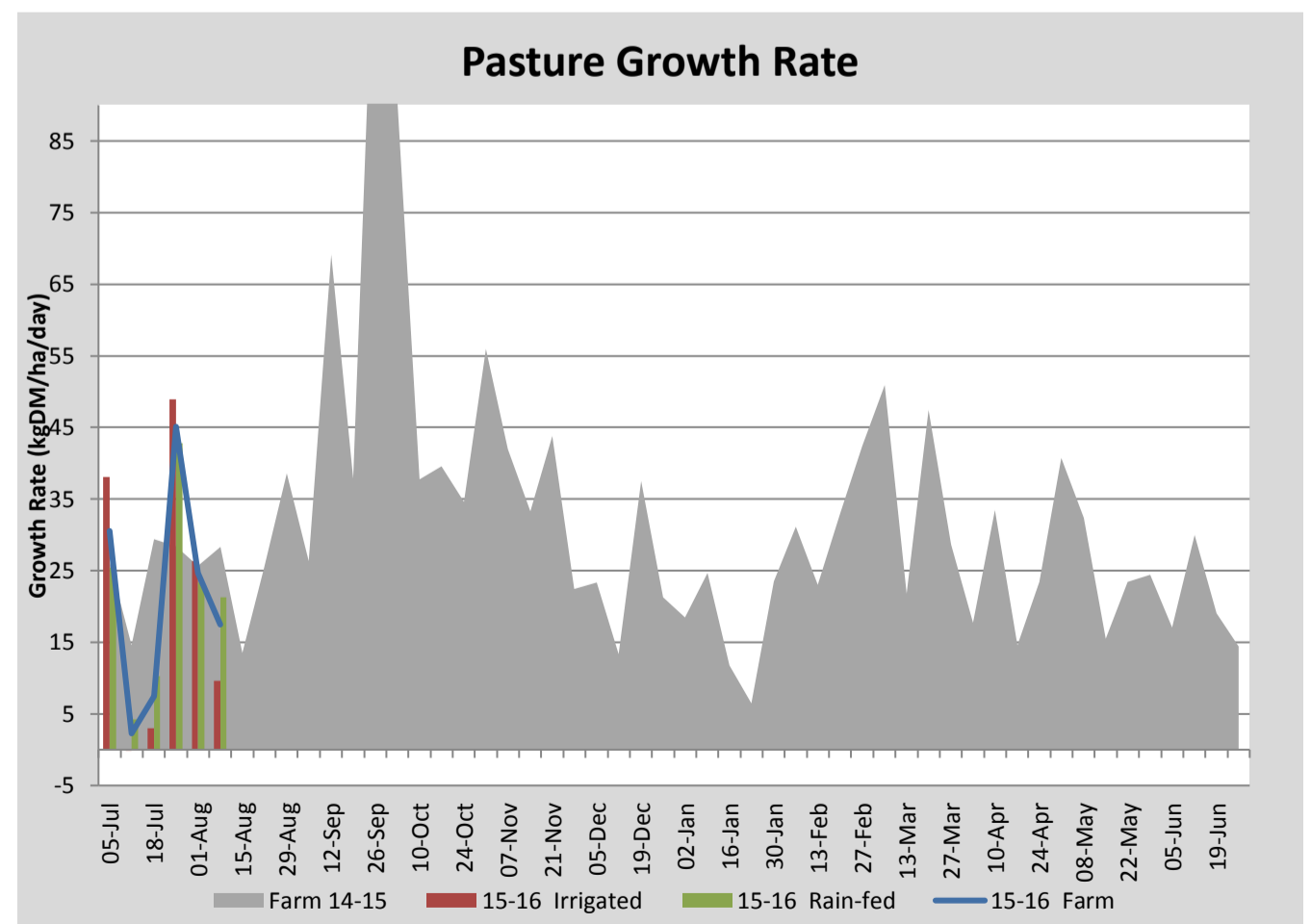
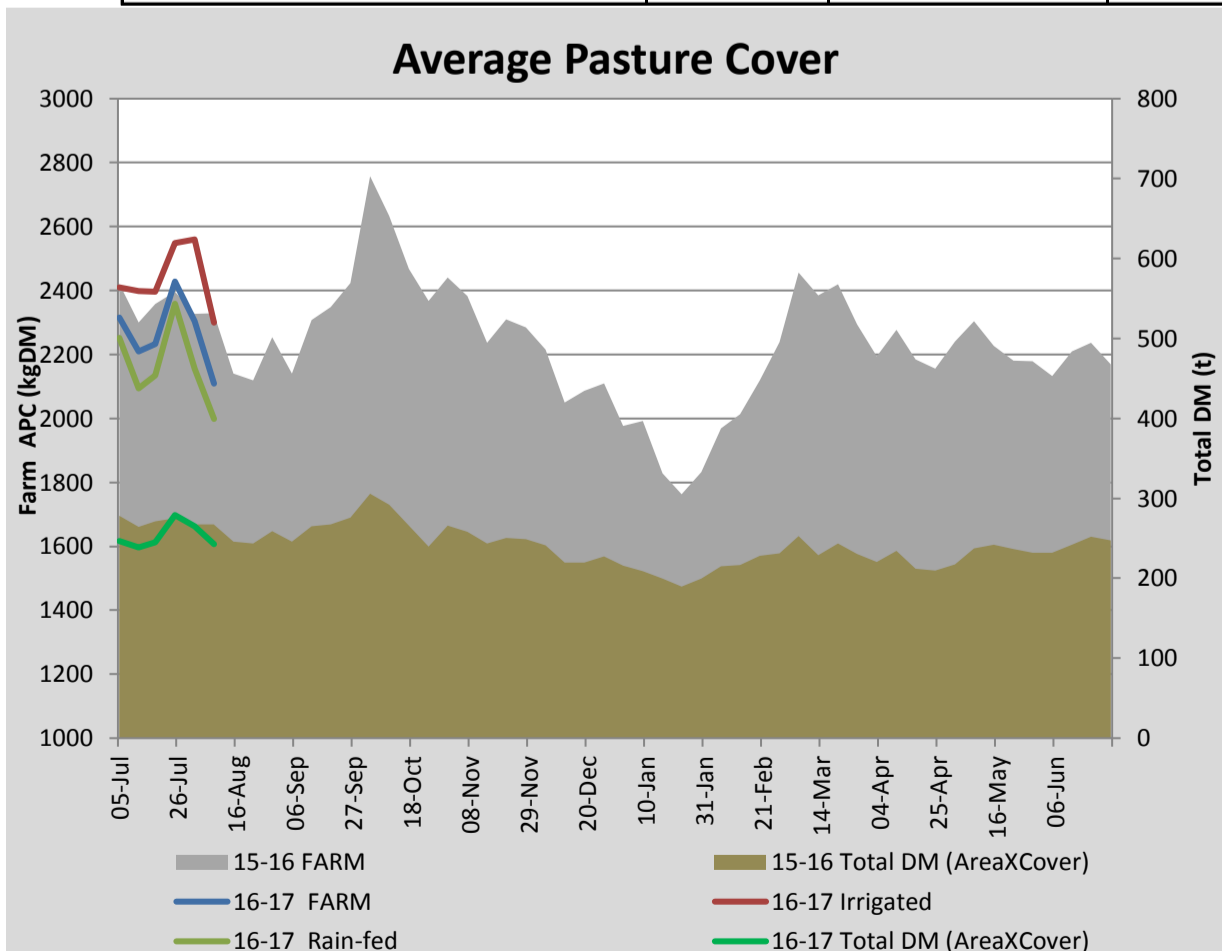
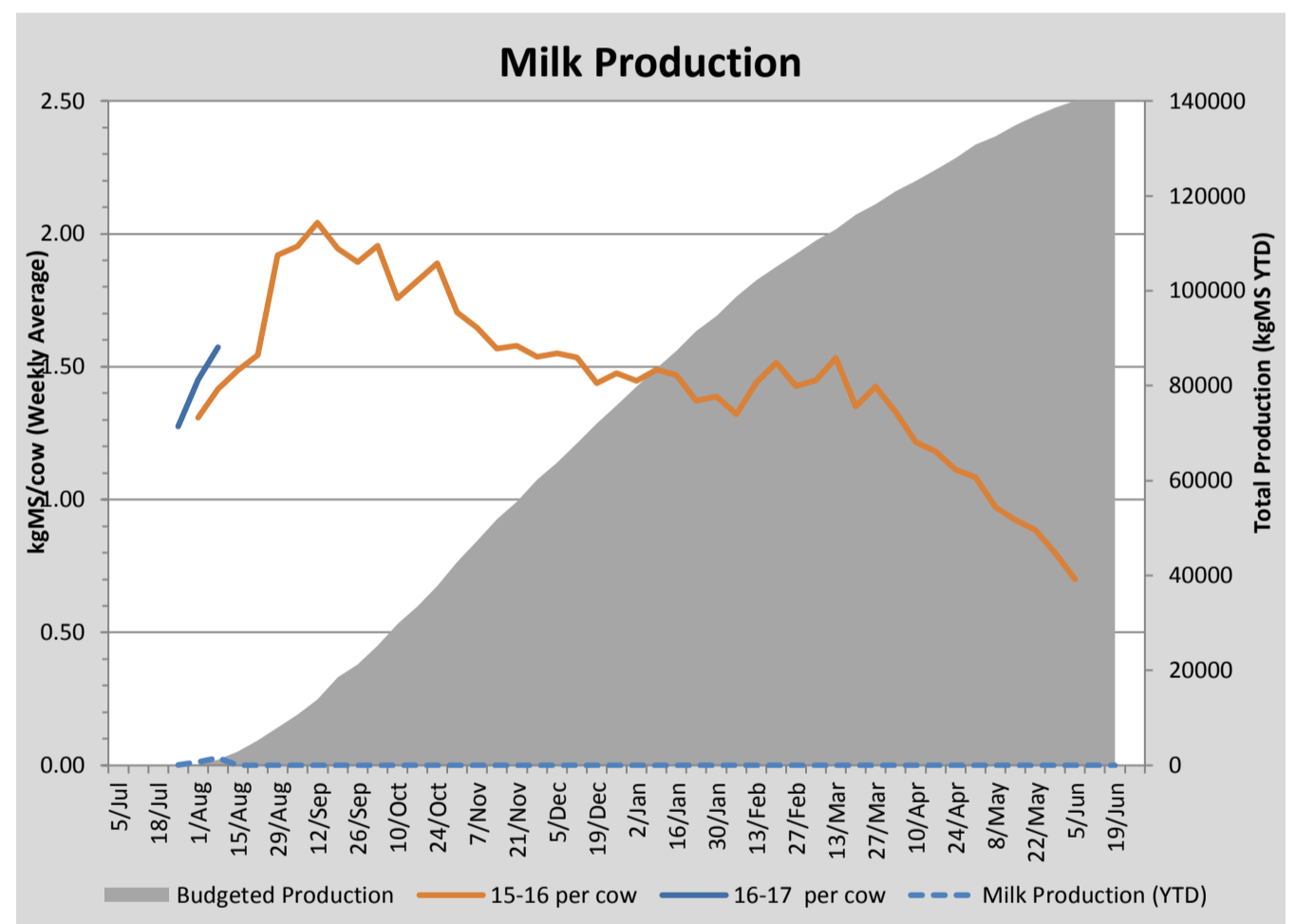
Key Summary Points

- 1 Average cover has fallen as paddocks with high covers are progressively grazed. Pasture growth rate is the lowest it has been for the winter period so far.
- 2 When there were a couple of days without rain and it was possible to drive on the paddocks, nitrogen at a rate of 40kg/ha was applied to 58 ha of the milking platform and 32 ha of the runoff area.
- 3 Mastitis continues to be the major problem in the dairy so far this calving season.

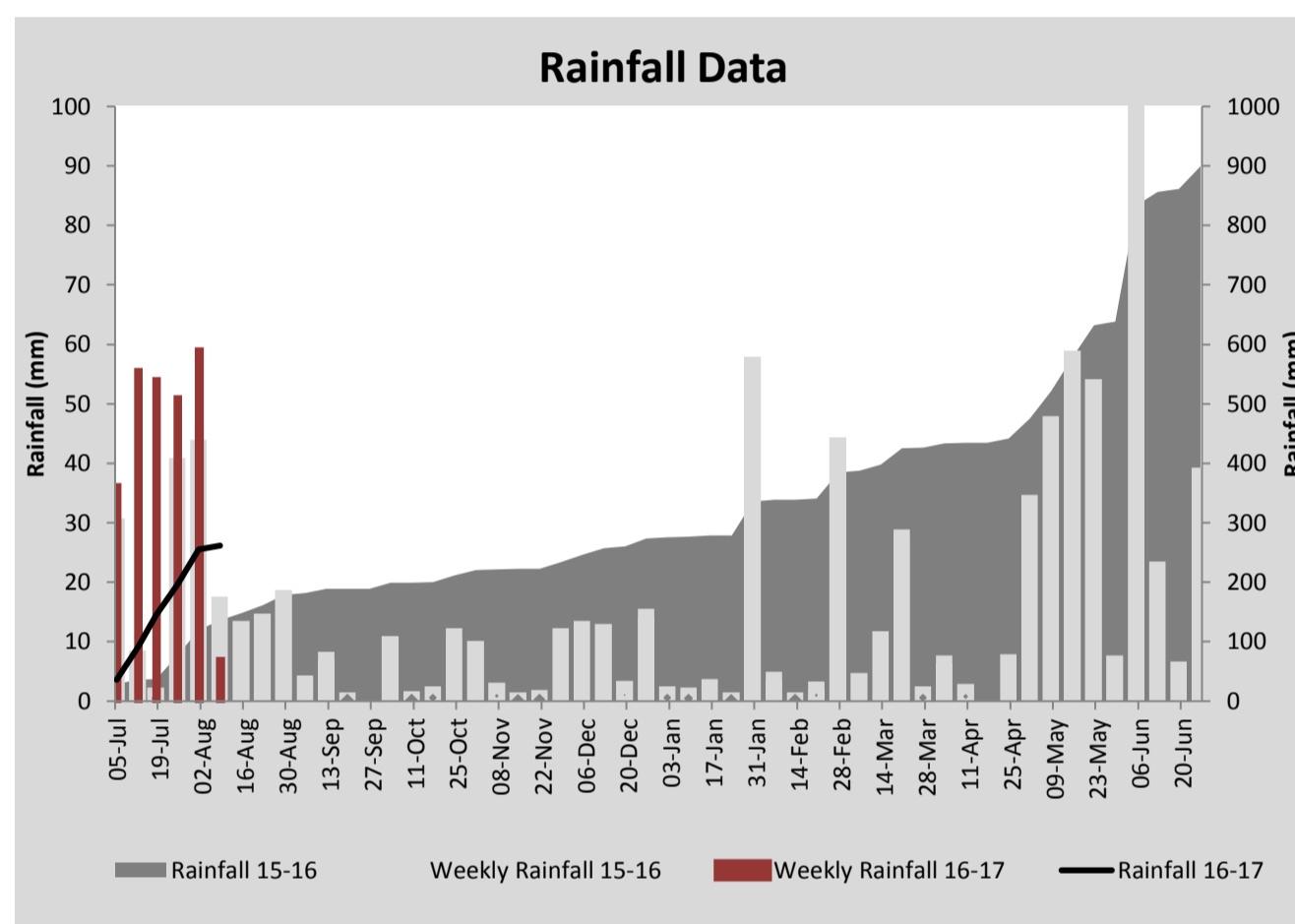
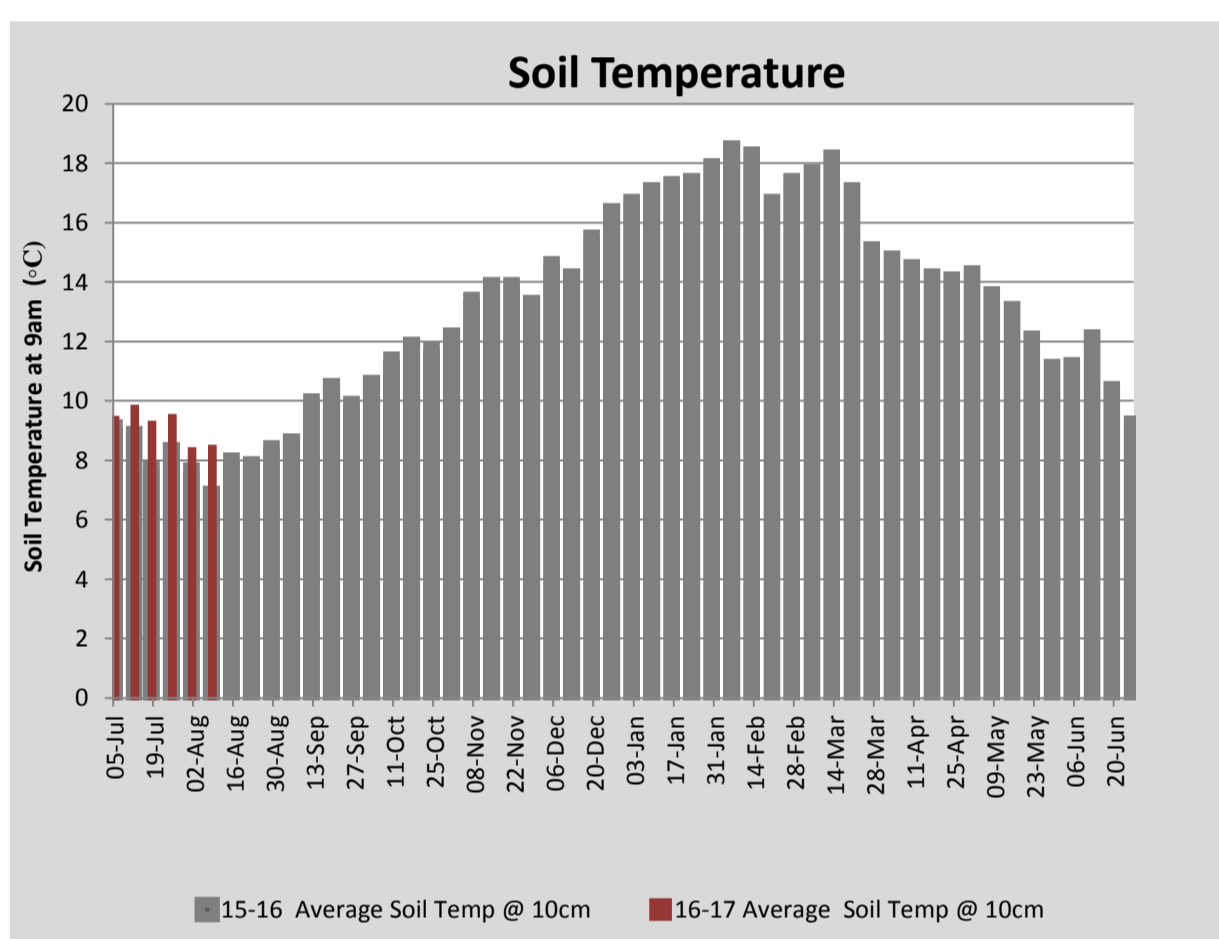
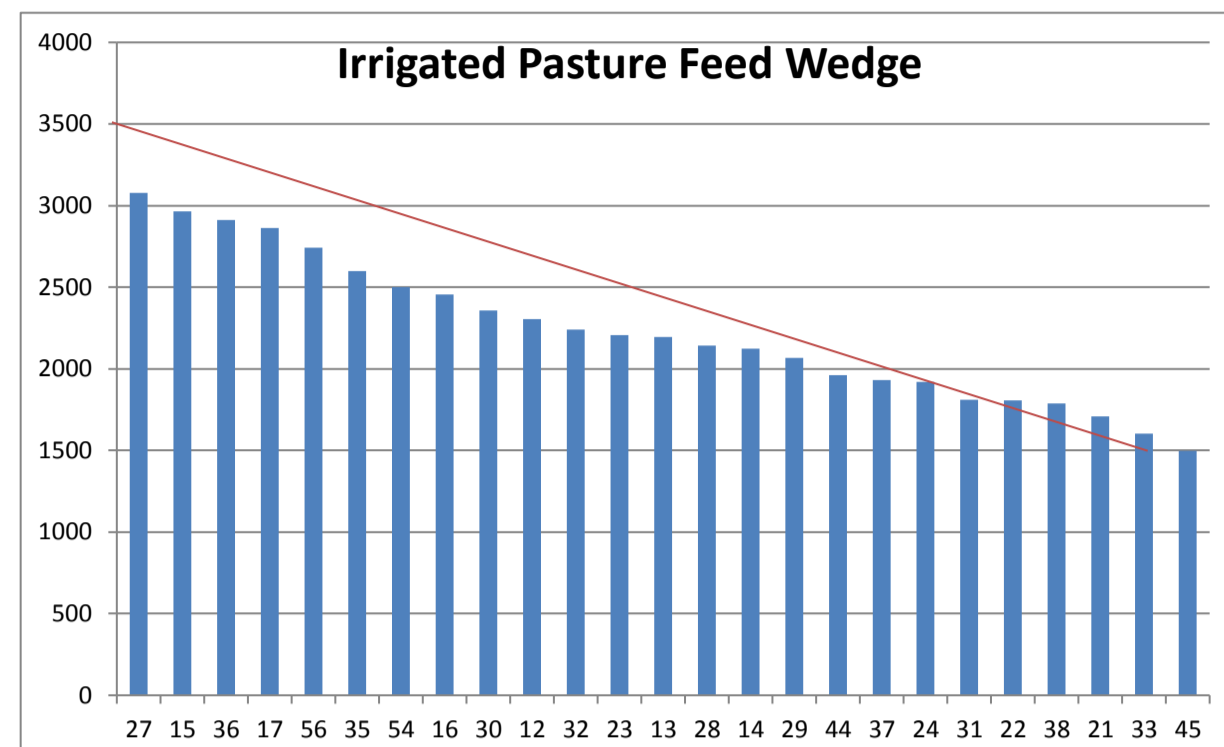
PASTURE INFORMATION	Farm			Irrigated			Rain-fed		
	Last Week	This Week	Variation	Last Week	This Week	Variation	Last Week	This Week	Variation
Grazed milking area (ha)	115.0	115.0	0.0	42.2	42.2	0.0	72.8	72.8	0
Rotation Length (days)	65	88	22	43	84	42	95	90	-5
Grazing allocation per day (ha)	1.8	1.3	-0.5	1.0	0.5	-0.5	0.8	0.8	0.0
Average time since last grazed (days)	77	76	-1	76	77	1	78	76	-2
Leaf appearance rate (days per leaf)	20	20	0	20	20	0	20	20	0
Average Pasture Cover (kgDM/ha)	2304	2109	-195	2560	2300	-260	2155	1998	-157
Pasture Growth Rate (kgDM/ha/day)	25	17	-7	26	10	-17	23	21	-2
Post Grazing Biomass (kgDM/ha)	1450	1515	65						
Nitrogen applied YTD (kgN/ha)	0	21	21	0	24	24	0	19	19

*Please note all pasture calculations detailed above are based on the current Grazed Milking Area

MILK PRODUCTION	Last Week	This Week	Variation
Average No. cows in milk (vat)	75	110	35
Litres per cow	17.0	19.4	2.3
% Fat	4.84	4.59	-0.25
% Protein	3.65	3.51	-0.14
MS/cow/day	1.45	1.57	0.12
MS/ha/day	0.96	1.53	0.57
BMCC	267,714	211,143	-56,571
Average Liveweight (kg)	0	0	0
	Budget	To Date	Variation
Total Milk Production (kgMS)	1,144	1,599	140%
MS/ha YTD	10	19	188%



Last 7 days					
Milkers Diet	kg DM	MJ ME	CP (%)	NDF (%)	\$/cow
Pasture Intake	15.6	12.5	18.0	43.0	0.0
Concentrates	3.4	12.9	15.6	20.3	0.0
Silage	0.0	0.0	0.0	0.0	0.0
Grazed forage	0.0	0.0	0.0	0.0	0.0
Other feeds	0.0	0.0	0.0	0.0	0.0
Total	19	238.9	17.6	38.9	0
Target		90	16-18	>33	0



Analysis			
Expected growth rate next 7 days (kgDM/ha/day)	20	Target Leaf Grazing Stage	2.5-3.0
Total Demand from Pasture (kgDM/ha/day)	25	Predicted APC 7 days time	2072
APC balance (kgDM/ha/day)	-5	Predicted APC Change	-37.0

Discussion

Average pasture cover has decreased as paddocks with high covers are grazed and pasture growth rates slow. As the week was drier (only 6.8 mm of rain) the opportunity was taken to apply nitrogen at 40 kg/ha to 58.5 ha on the milking platform and 31.5 ha on the run-off area. The slightly drier conditions also allowed for two sacrifice and one winter crop paddocks on the run-off area to be cultivated ready for sowing with perennial ryegrass. Calving continues to progress without too many calving or cow metabolic problems. The wet conditions have meant slightly more cases of mastitis in fresh cows creating a bit more work in the dairy with daily hand stripping of quarters to identify as early as possible cows which have mastitis. Over the first few weeks of the calf trial (comparing accelerated growth programs) the ad lib calves have achieved the highest growth rate. The average amount of milk consumed by the ad lib calves at this early stage is 6 litres/day with some calves consuming up to 10 litres/day.

8 August 2016

