

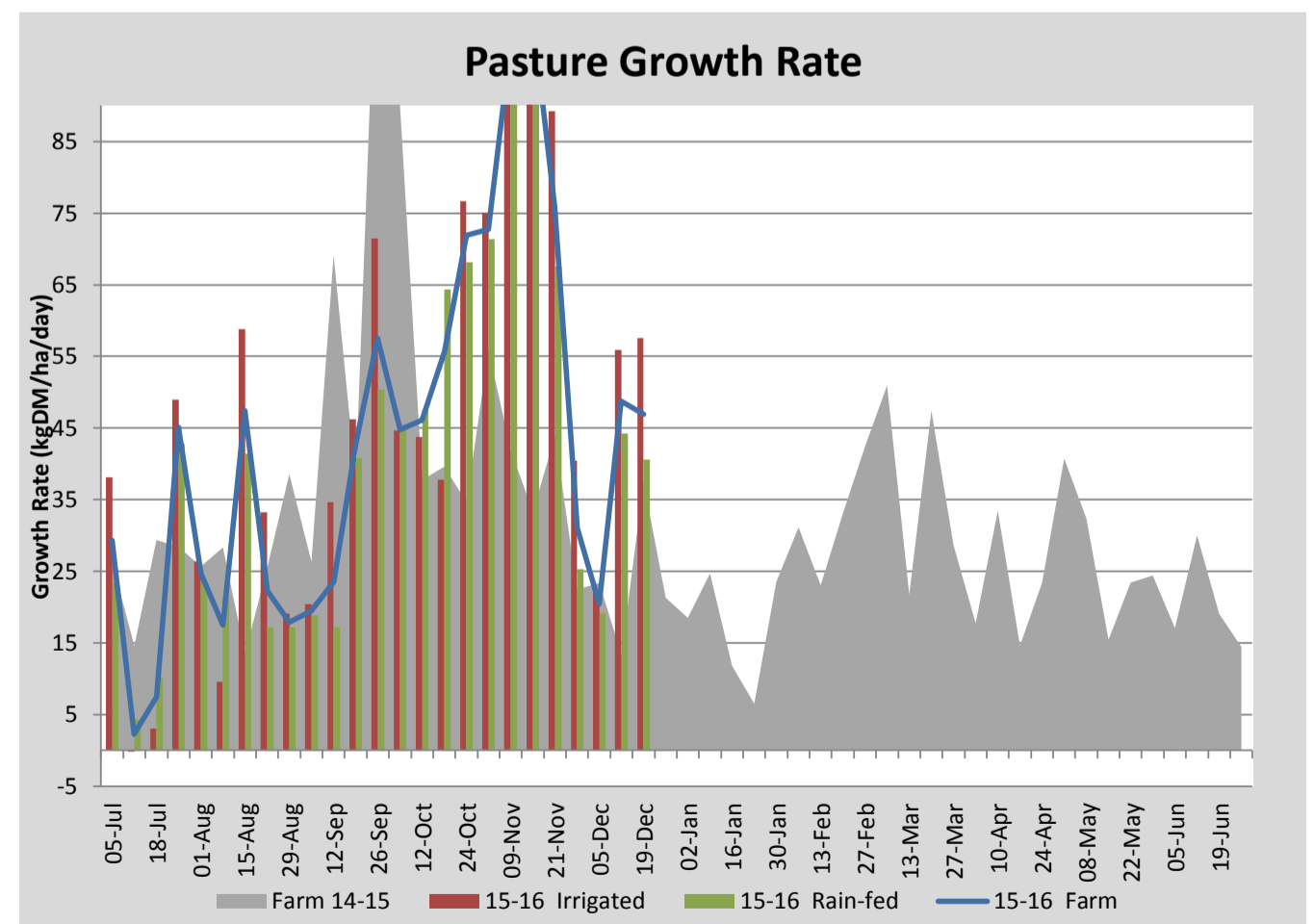
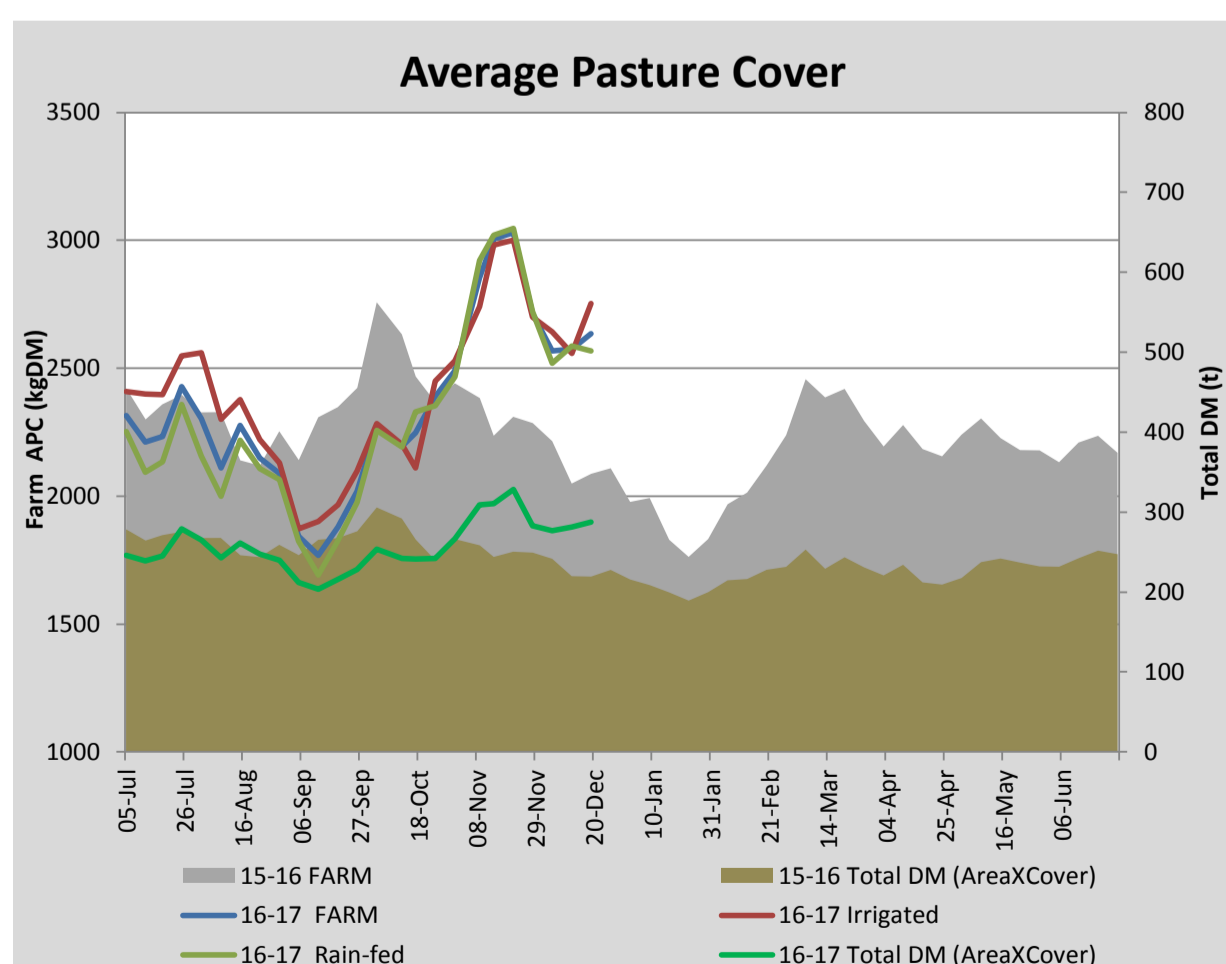
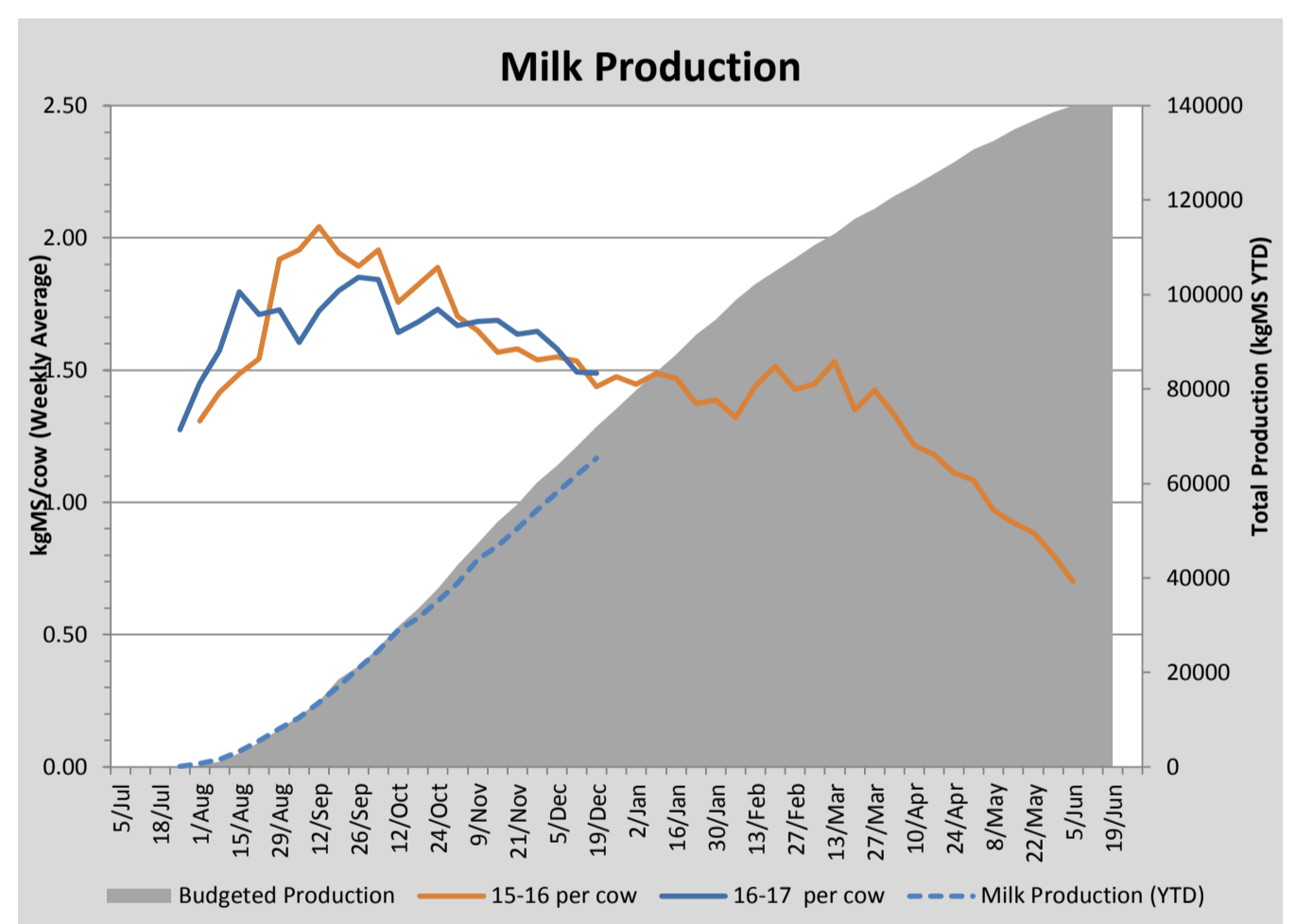
## Key Summary Points

- 1 Average pasture cover held this week at 2636kgDM/ha.
- 2 Per cow milksoild production held this week at 1.49kg MS/cow/day.
- 3 The focus for the coming week is to (where possible) mow paddocks pre grazing to increase utilisation and improve the quality of regrowth in subsequent grazings.

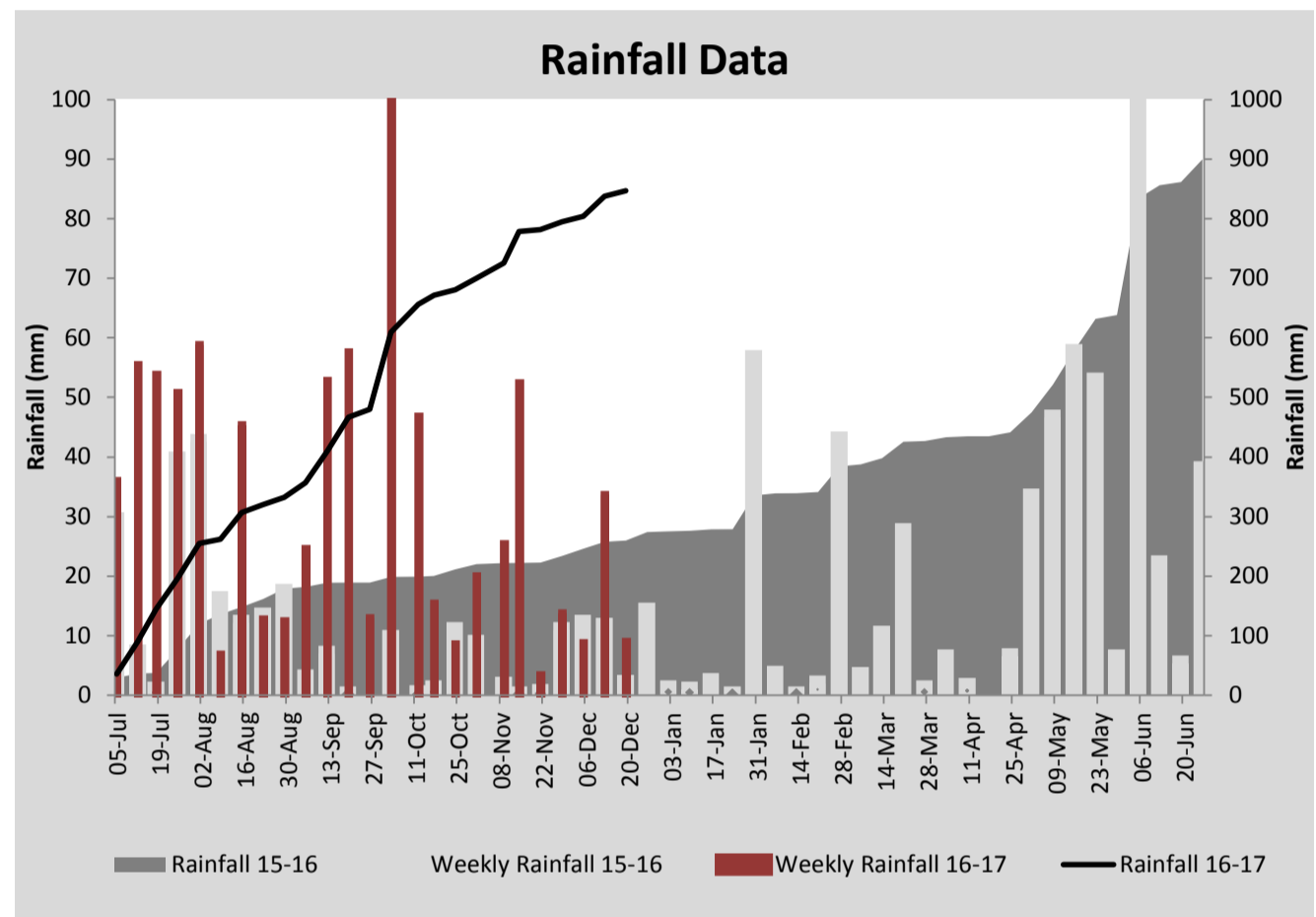
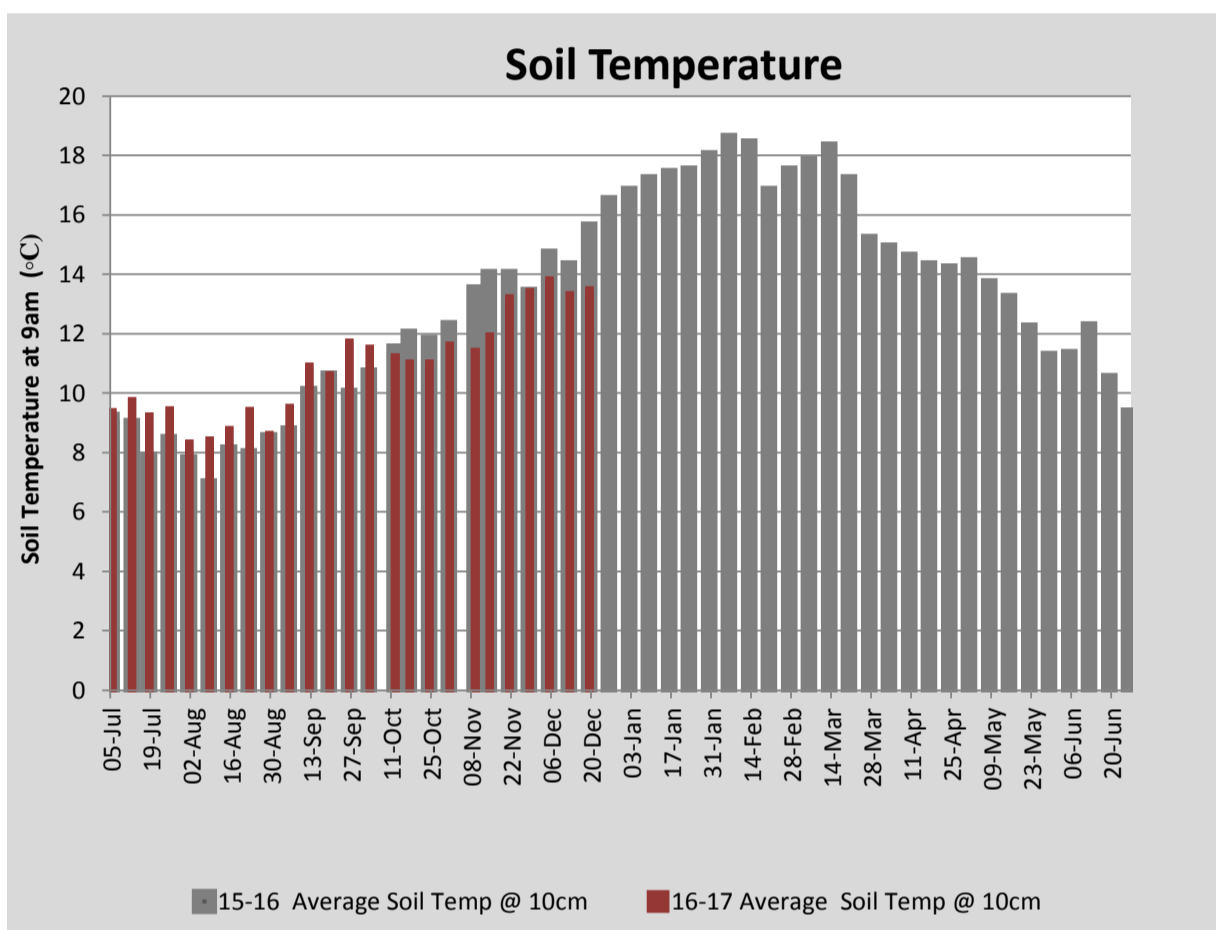
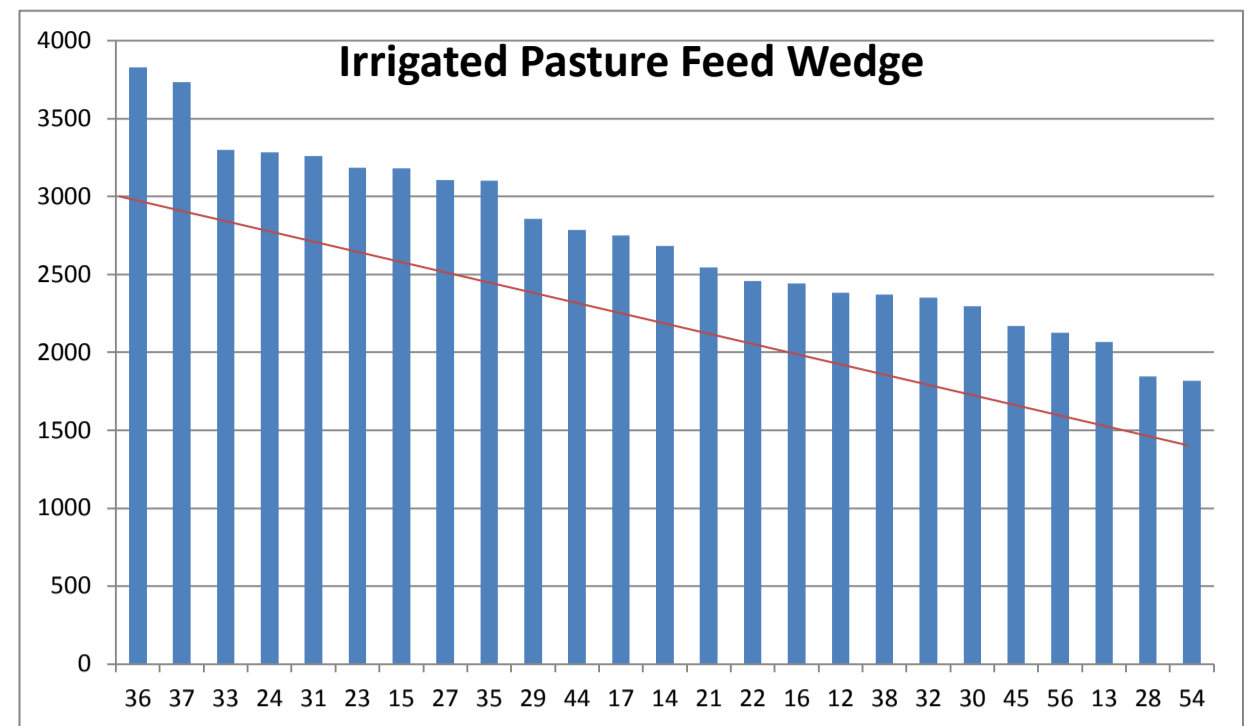
PASTURE INFORMATION	Farm			Irrigated			Rain-fed		
	Last Week	This Week	Variation	Last Week	This Week	Variation	Last Week	This Week	Variation
Grazed milking area (ha)	109.3	109.1	-0.2	42.2	40.5	-1.7	67.0	68.7	2
Rotation Length (days)	46	41	-5	39	31	-8	52	50	-1
Grazing allocation per day (ha)	2.4	2.7	0.3	1.1	1.3	0.2	1.3	1.4	0.1
Average time since last grazed (days)	34	34	0	35	36	1	33	33	-0
Leaf appearance rate (days per leaf)	11	11	0	10	10	0	11	11	0
Average Pasture Cover (kgDM/ha)	2575	2636	60	2558	2752	194	2586	2567	-19
Pasture Growth Rate (kgDM/ha/day)	49	47	-2	56	58	2	44	41	-4
Post Grazing Biomass (kgDM/ha)	1760	1800	40						
Nitrogen applied YTD (kgN/ha)	119	135	16	0	18	18	0	15	15

\*Please note all pasture calculations detailed above are based on the current Grazed Milking Area

MILK PRODUCTION	Last Week	This Week	Variation
Average No. cows in milk (vat)	350	352	2
Litres per cow	18.7	18.5	-0.2
% Fat	4.60	4.57	-0.03
% Protein	3.34	3.48	0.14
MS/cow/day	1.49	1.49	-0.00
MS/ha/day	4.63	4.64	0.01
BMCC	96,000	96,333	333
Average Liveweight (kg)	476	476	0
	Budget	To Date	Variation
Total Milk Production (kgMS)	72,063	65,399	91%
MS/ha YTD	632	637	101%



Last 7 days					
Milkers Diet	kg DM	MJ ME	CP (%)	NDF (%)	\$/cow
Pasture Intake	14.7	0.0	0.0	0.0	0.0
Concentrates	3.0	12.9	45.6	20.3	0.0
Silage	1.3	0.0	0.0	0.0	0.0
Grazed forage	0.0	0.0	0.0	0.0	0.0
Other feeds	0.0	0.0	0.0	0.0	0.0
<b>Total</b>	<b>19</b>				<b>0</b>
<b>Target</b>			<b>16-18</b>	<b>&gt;33</b>	<b>0</b>



Analysis			
Expected growth rate next 7 days (kgDM/ha/day)	41	Target Leaf Grazing Stage	2.5-3.0
Total Demand from Pasture (kgDM/ha/day)	47	Predicted APC 7 days time	2590
APC balance (kgDM/ha/day)	-7	Predicted APC Change	-45.8

## Discussion

Average pasture cover held this week at 2575kgDM/ha. Per cow milk solid production held this week at 1.49kgMS/cow/day. We have been, and will continue to, pre-graze top paddocks that are going reproductive so as to ensure we regain quality in the next round. Pinkeye continues to be a major problem in the young stock with new cases still occurring. Over half of the young stock have now been treated for pink eye. 7ha of the run-off was ploughed this coming week in preparation for the kale winter crop. The key focus for the coming week is to monitor pasture quality, topping where required and to ensure timely irrigation scheduling.

# 19 December 2016

