

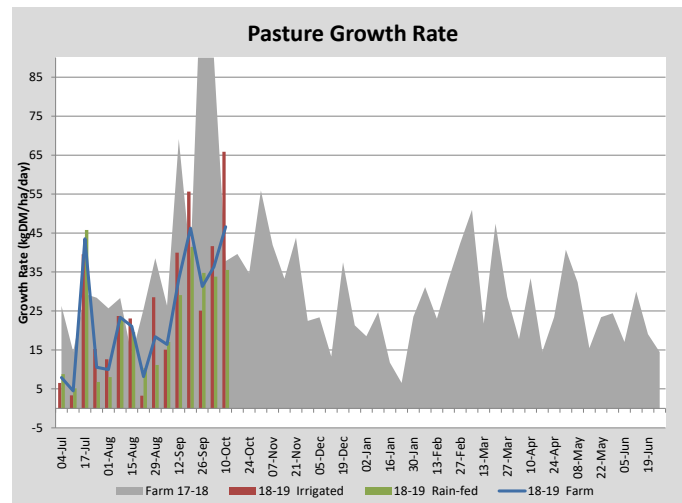
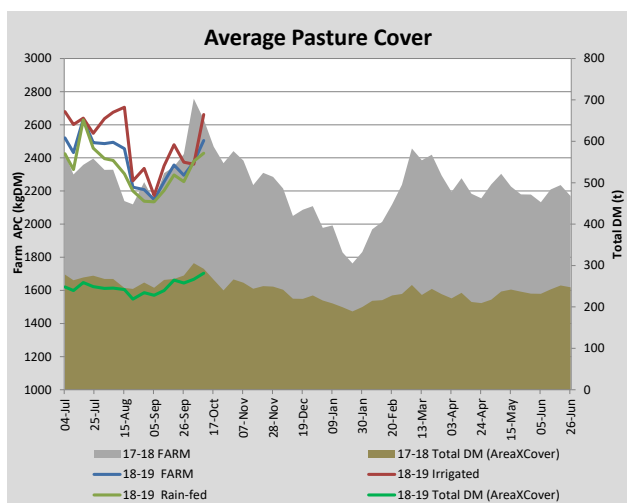
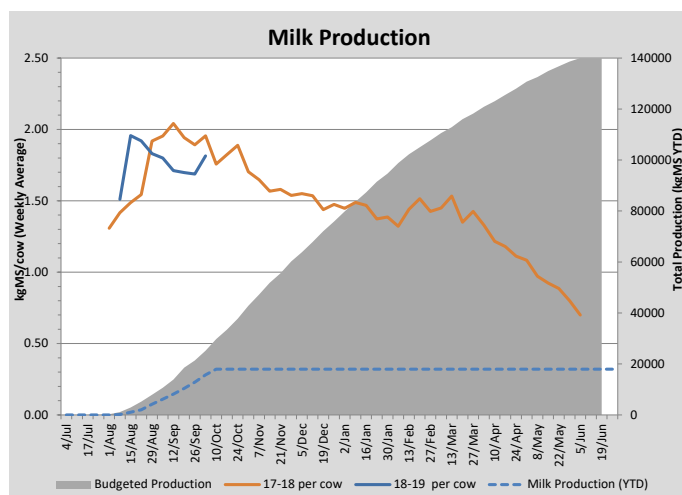
Key Summary Points

1	
2	
3	

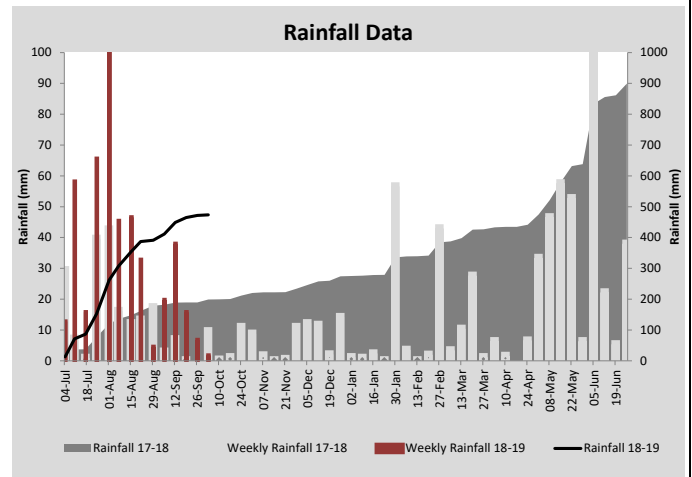
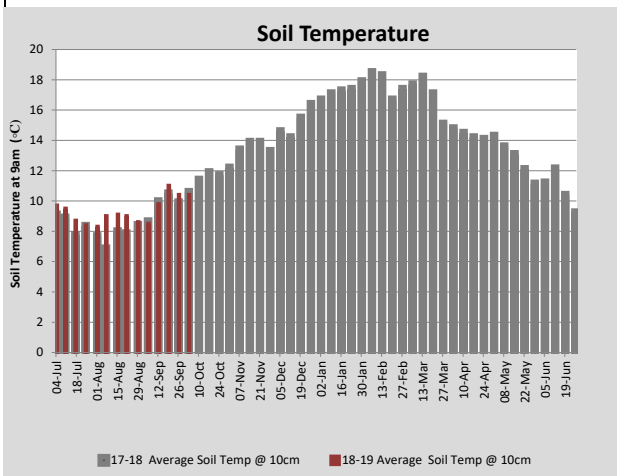
PASTURE INFORMATION	Farm			Irrigated			Rain-fed		
	Last Week	This Week	Variation	Last Week	This Week	Variation	Last Week	This Week	Variation
Grazed milking area (ha)	106.2	112.3	6.1	37.2	37.2	0.0	69.0	75.2	6.1
Leaf appearance rate (days per leaf)	14	14	0	14	14	0	14	14	0
Average Pasture Cover (kgDM/ha)	2255	2357	102	2352	2479	127	2203	2297	94
Pasture Growth Rate (kgDM/ha/day)	33	46	13	40	56	16	29	41	12
Post Grazing Biomass (kgDM/ha)	1498	1453	-45						
Nitrogen applied YTD (kgN/ha)	16	17	1	2	4	1	2	0	-2

*Please note all pasture calculations detailed above are based on the current Grazed Milking Area

MILK PRODUCTION	Last Week	This Week	Variation
Average No. cows in milk (vat)	230	255	25
Litres per cow	23.2	23.6	0.4
% Fat	4.29	4.07	-0.22
% Protein	3.00	3.14	0.14
MS/cow/day	1.71	1.70	-0.01
MS/ha/day	3.48	3.83	0.35
BMCC	188	103	-85
Average Liveweight (kg)	0	0	0
	Budget	To Date	Variation
Total Milk Production (kgMS)	18,571	10,431	-56%
MS/ha YTD	163		



Last 7 days					
Milkers Diet	kg DM	MJ ME	CP (%)	NDF (%)	\$/cow
Pasture Intake	14.0	13.3	22.6	45.2	0.0
Concentrates	5.0	12.5	14.0	20.0	0.0
Silage	0.0	0.0	0.0	0.0	0.0
Grazed forage	0.0	0.0	0.0	0.0	0.0
Other feeds	0.0	0.0	0.0	0.0	0.0
Total	19	248.7	20.3	38.6	0
Target		210	16-18	>33	0



Analysis			
Expected growth rate next 7 days (kgDM/ha/day)	45	Target Leaf Grazing Stage	2.5-3.0
Total Demand from Pasture (kgDM/ha/day)	35	Predicted APC 7 days time	2427
APC balance (kgDM/ha/day)	10	Predicted APC Change	69.3

Discussion

19 September 2018

