

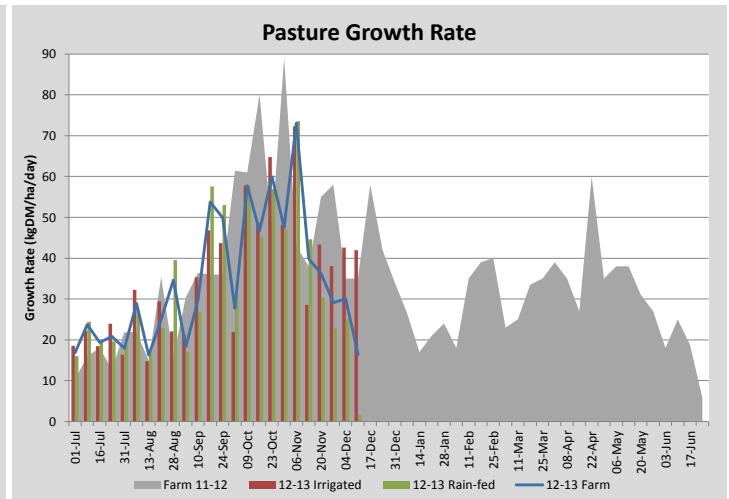
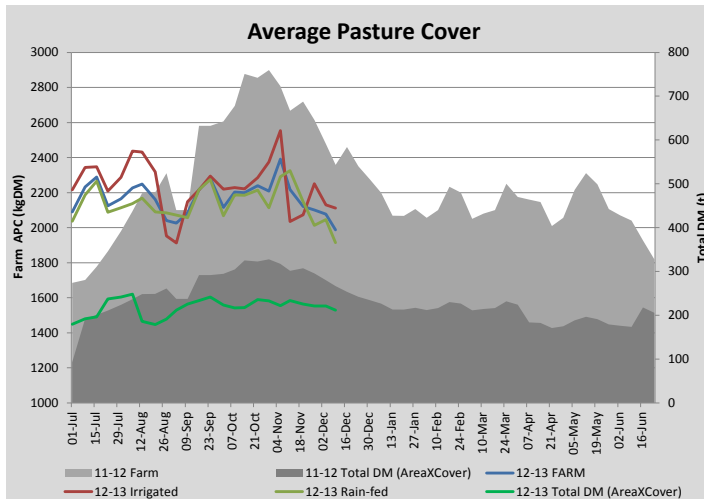
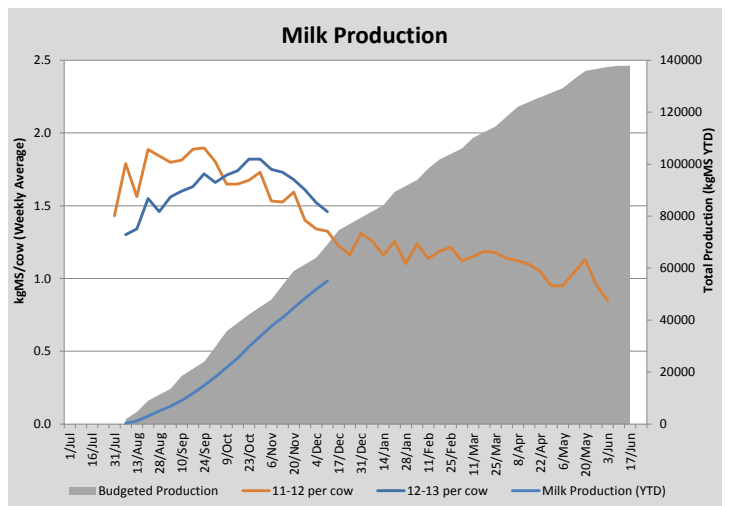
## Key Summary Points

- 1** There has been no detectable pasture growth on the rain-fed portion of the farm the last 7 days. Average pasture growth is on par with levels recorded in mid to late January last year.
- 2** We have dried off 20 low producing/high cell count cows to reduce feed demand and optimise profit from supplementary feeding
- 3** Key focus this week on maintaining rotation length while sufficiently feeding cows

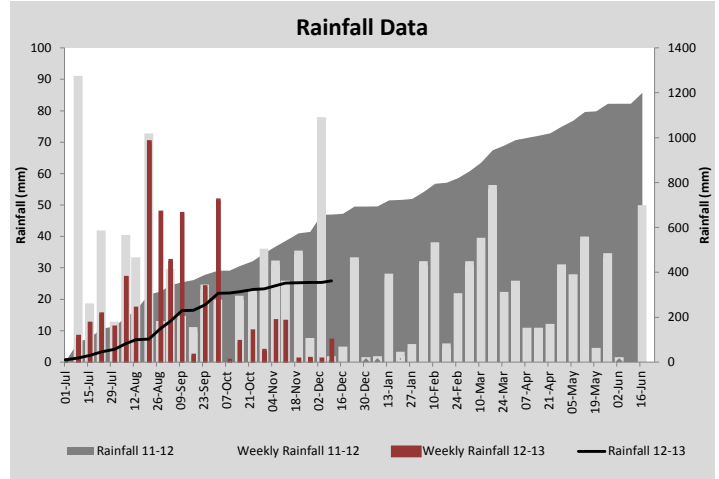
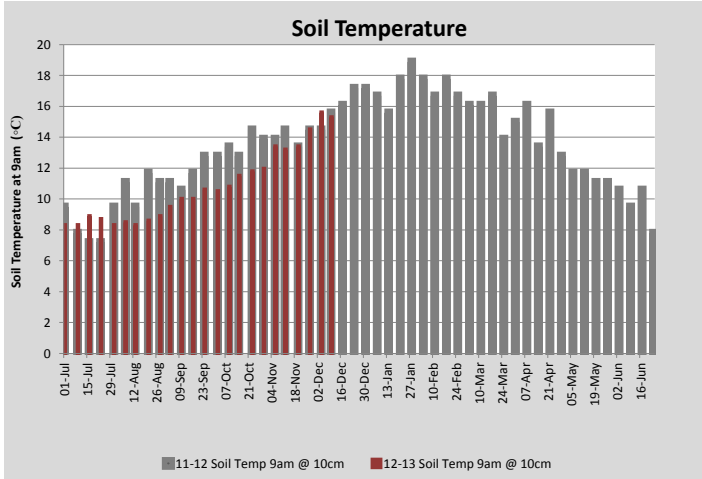
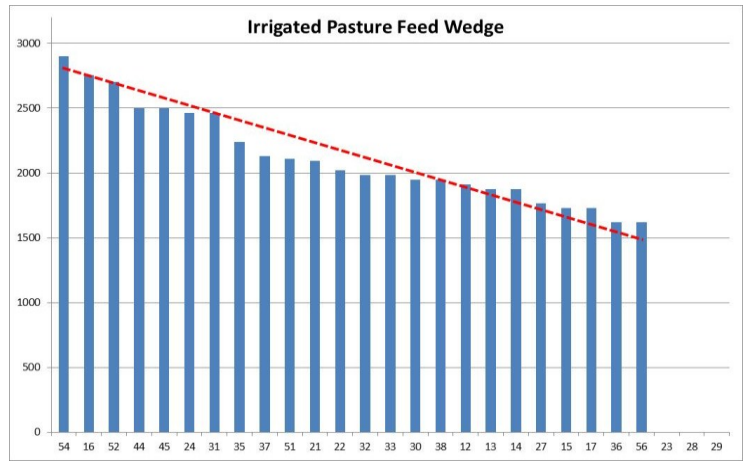
PASTURE INFORMATION	Farm			Irrigated			Rain-fed		
	Last Week	This Week	Variation	Last Week	This Week	Variation	Last Week	This Week	Variation
Grazed milking area (ha)	106.3	106.3	0.0	38.9	38.9	0.00	67.4	67.4	0.00
Rotation Length (days)	41	43		26	24		61	75	
Grazing allocation per day (ha)	2.6	2.5	0.10	1.5	1.6	0.10	1.1	0.9	0.20
Average time since last grazed (days)	43	47	4	22	25	-3	55	60	5
Leaf appearance rate (days per leaf)	13	13	-0	10	9	-1	15	15	0
Average Pasture Cover (kgDM/ha)	2077	1987	-90	2129	2111	-19	2047	1915	-131
Pasture Growth Rate (kgDM/ha/day)	30	16	-14	43	42	-1	25	2	-23
Post Grazing Biomass (kgDM/ha)	1600	1500	100						
Nitrogen applied YTD (kgN/ha)	140	152	12	0	5	5	0	7	7

\*Please note all pasture calculations detailed above are based on the current Grazed Milking Area

MILK PRODUCTION	Last Week	This Week	Variation
No cows in milk (vat)	333	313	20.00
Litres per cow	21.6	20.9	0.74
% Fat	3.95	3.96	0.01
% Protein	3.04	3.03	0.01
MS/cow/day	1.52	1.46	0.06
MS/ha/day	4.39	4.18	0.21
BMCC	176	178	2.00
Average Liveweight (kg)			
	Budget	To Date	Variation
Total Milk Production (kgMS)	69102	55012.00	80%
MS/ha YTD	617	491	-126



Last 7 days					
Milkers Diet	kg DM	ME	CP	NDF	\$/cow
Pasture Intake	9.0	10.0	0.0	0.0	0.0
Concentrates	4.5	12.0	0.0	0.0	0.0
Silage	4.5	10.0	0.0	0.0	0.0
Grazed forage	0.0	0.0	0.0	0.0	0.0
Other feeds	0.0	0.0	0.0	0.0	0.0
<b>Total</b>	<b>18</b>	<b>189</b>	<b>0</b>	<b>0</b>	<b>0</b>
<b>Target</b>	<b>18</b>		<b>0</b>	<b>0</b>	<b>0</b>



Analysis			
Expected growth rate next 7 days (kgDM/ha/day)	30	Target Leaf Grazing Stage	3.0
Total Demand from Pasture (kgDM/ha/day)	26	Predicted APC 7 days time	2011
APC balance (kgDM/ha/day)	4	Predicted APC Change	24.5

## Discussion

The quality of the milkers diet continues to drop as pasture quality on the rain-fed portion of the farm decreases. Because of this the total energy available in the cows diet has reduced and milk production has dropped slightly. We have maintained our desired rotation lengths the last 7 days and will keep this constant for the next week (>60days rain-fed and 25 days irrigated). We have dried off 20 low producing/high cell count cows and will continue to monitor the herd closely for any other candidates. No growth on the rain-fed pastures the last week (60% of the farm) has meant average covers have dropped substantially. We will increase silage feeding to 5kg/cow/day this week to try and match pasture growth and prevent average covers from sliding further. Two irrigated new grass paddocks will enter the rotation in the next 10 days which will also help match supply to demand.

# 10 December 2012

