

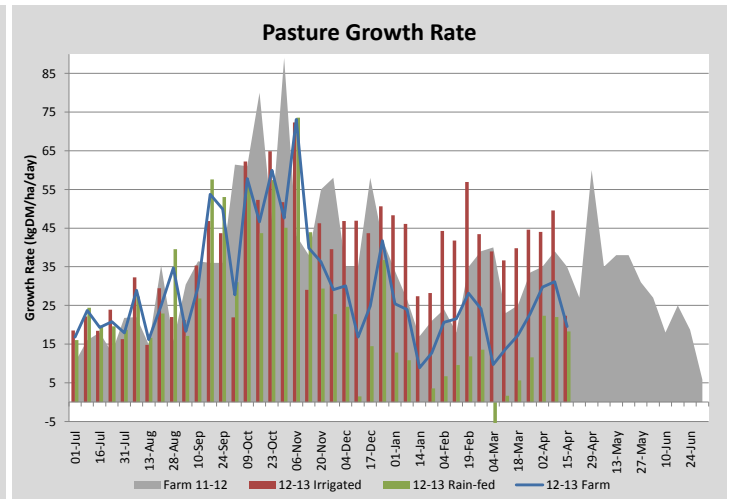
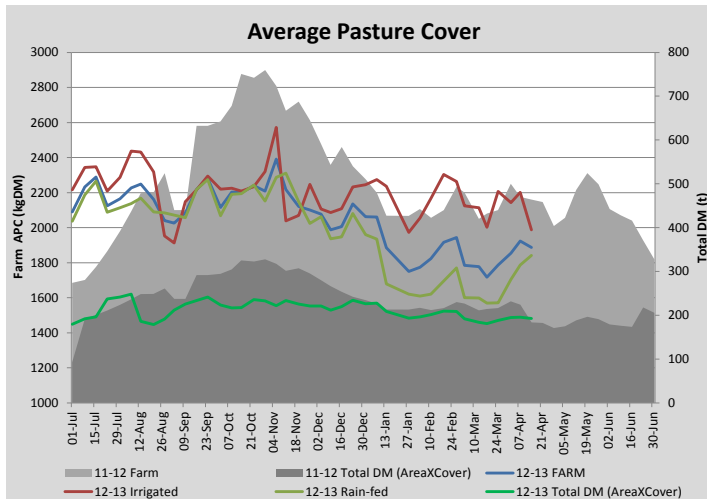
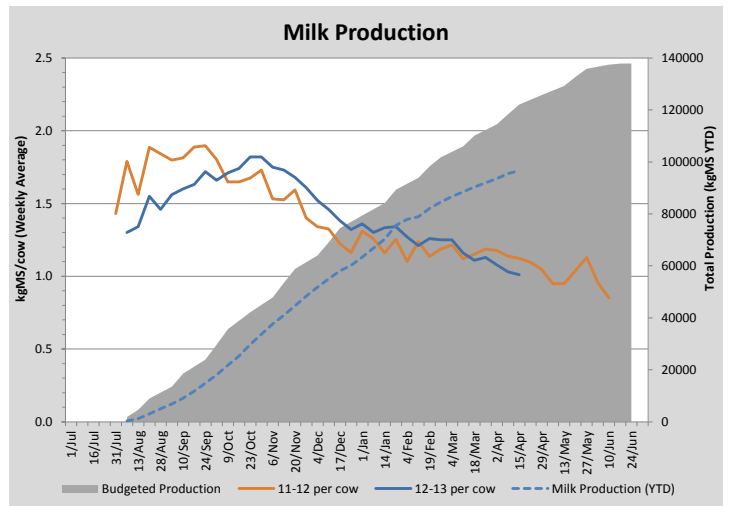
Key Summary Points

- 1** Average cover and growth rates have dropped due to temporarily speeding up the rotation in order to line up paddocks for the MMFF trial in May.
- 2** Cows in the milkers are currently maintaining weight/condition.
- 3** Key focus this week is extending rotation length with remaining silage in order to maximise growth while soil temperatures are still high enough.

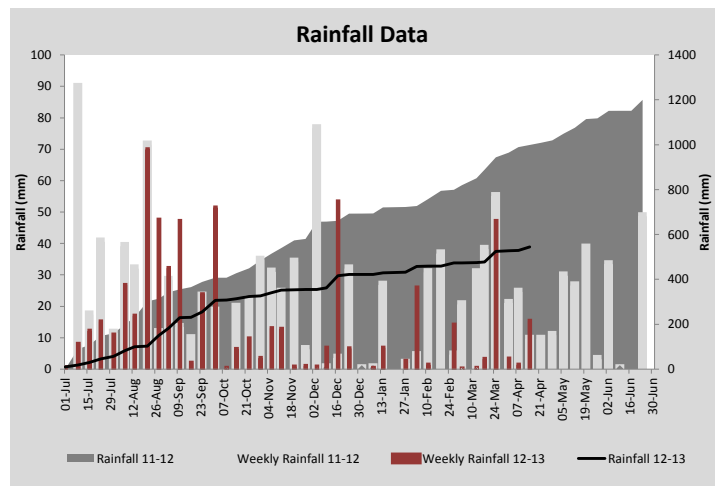
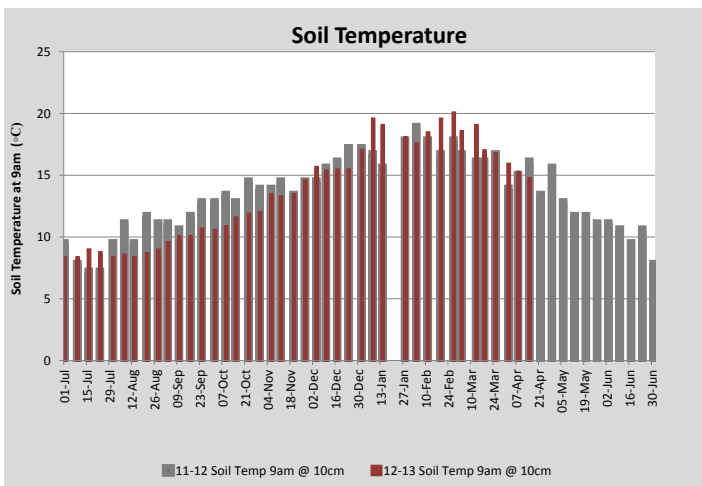
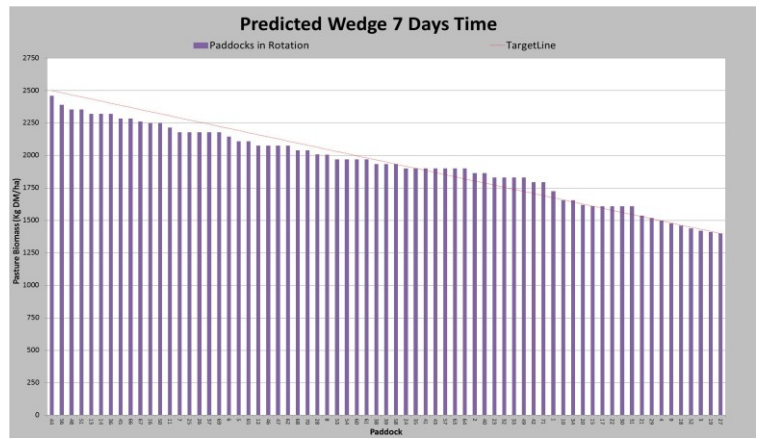
PASTURE INFORMATION	Farm			Irrigated			Rain-fed		
	Last Week	This Week	Variation	Last Week	This Week	Variation	Last Week	This Week	Variation
Grazed milking area (ha)	101.6	102.1	0.5	33.6	31.7	1.94	68.0	70.4	2.47
Rotation Length (days)	42	49		24	24		68	88	
Grazing allocation per day (ha)	2.4	2.1	0.30	1.4	1.3	0.10	1.0	0.8	0.20
Average time since last grazed (days)	53	59	7	28	25	3	65	75	10
Leaf appearance rate (days per leaf)	11	12	1	11	12	1	11	12	1
Average Pasture Cover (kgDM/ha)	1924	1887	-37	2201	1987	-214	1787	1842	55
Pasture Growth Rate (kgDM/ha/day)	31	20	-12	50	22	-27	22	18	-4
Post Grazing Biomass (kgDM/ha)	1400	1450	50						
Nitrogen applied YTD (kgN/ha)	250	250	0	22	0	-22	11	0	-11

*Please note all pasture calculations detailed above are based on the current Grazed Milking Area

MILK PRODUCTION	Last Week	This Week	Variation
No cows in milk (vat)	223	180	43.00
Litres per cow	12.5	12.2	0.33
% Fat	4.80	4.81	0.01
% Protein	3.40	3.47	0.07
MS/cow/day	1.03	1.01	0.02
MS/ha/day	1.72	1.59	0.13
BMCC	171	168	3.00
Average Liveweight (kg)			
	Budget	To Date	Variation
Total Milk Production (kgMS)	122103	96574	79%
MS/ha YTD	1090	862	-228



Last 7 days					
Milkers Diet	kg DM	ME	CP	NDF	\$/cow
Pasture Intake	10.5	11.0	0.0	0.0	0.0
Concentrates	5.0	11.0	0.0	0.0	0.0
Silage	1.5	8.5	0.0	0.0	0.0
Grazed forage	0.0	0.0	0.0	0.0	0.0
Other feeds	0.0	0.0	0.0	0.0	0.0
Total	17	183.3	0	0	0
Target	17		0	0	0



Analysis			
Expected growth rate next 7 days (kgDM/ha/day)	30	Target Leaf Grazing Stage	3.0
Total Demand from Pasture (kgDM/ha/day)	20	Predicted APC 7 days time	1959
APC balance (kgDM/ha/day)	10	Predicted APC Change	72.1

Discussion

The next three week sampling period for the More Milk From Forages (MMFF) research trial starts on the 1st of May. We spent the last week moving reasonably quickly through a number of the irrigated paddocks associated with the trial in order to ensure the next grazing of these paddocks will line up with the research trial. We have used minimal silage the last 7 days because of this, but the speed we have moved through the paddocks has dropped our average cover on the irrigated platform (and subsequently growth rates for the last 7 days). We will increase silage intake to 5kgDM/cow/day over the next 7 days to help stretch the rotation back out and build average cover while growth rates are still reasonable. With rain-fed and irrigated paddocks now growing at similar rates and spread well throughout the feedwedge we can now return to managing a single rotation. For the next 7 days we will use 1/55th of the currently available milking platform per day.

15 April 2013

