

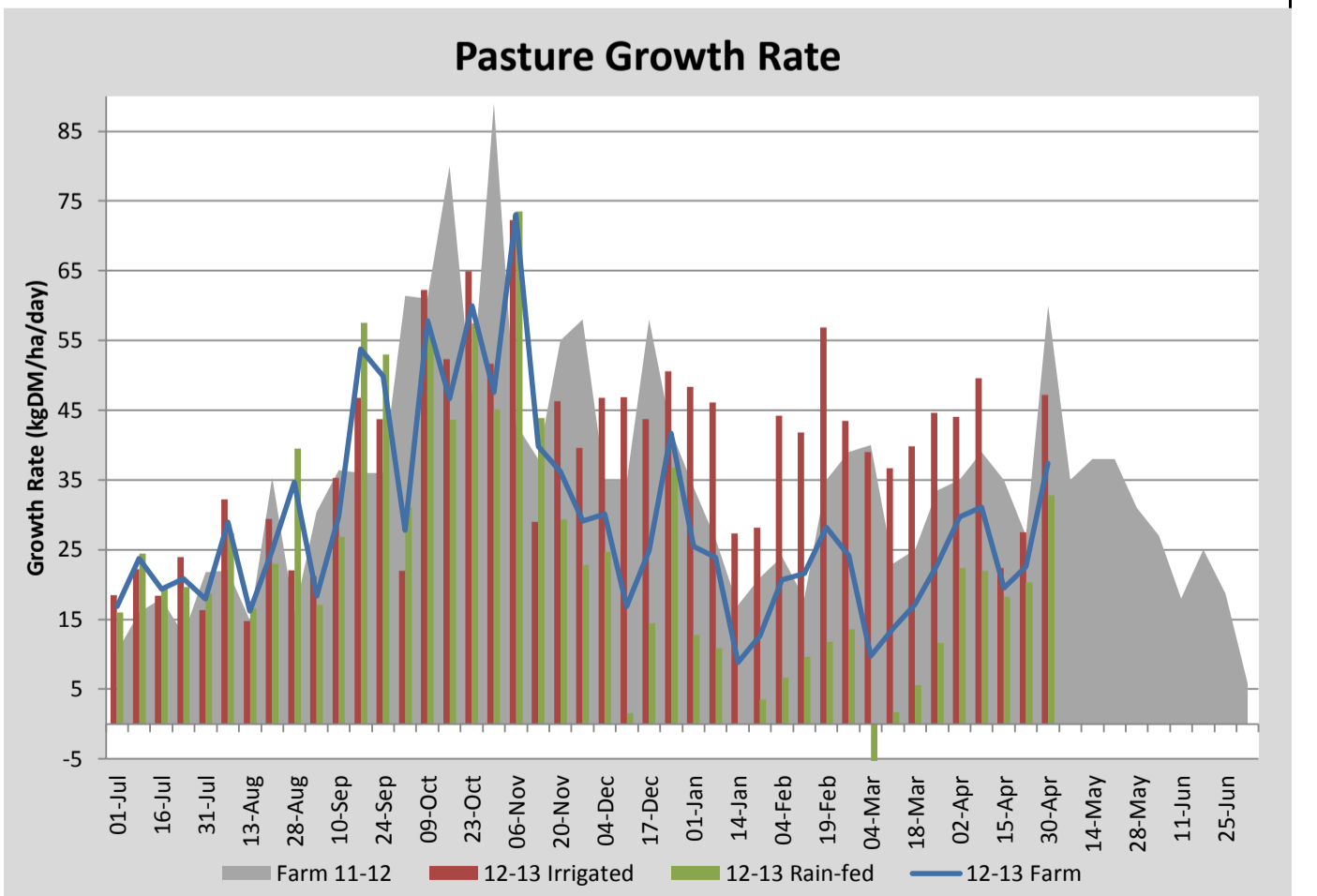
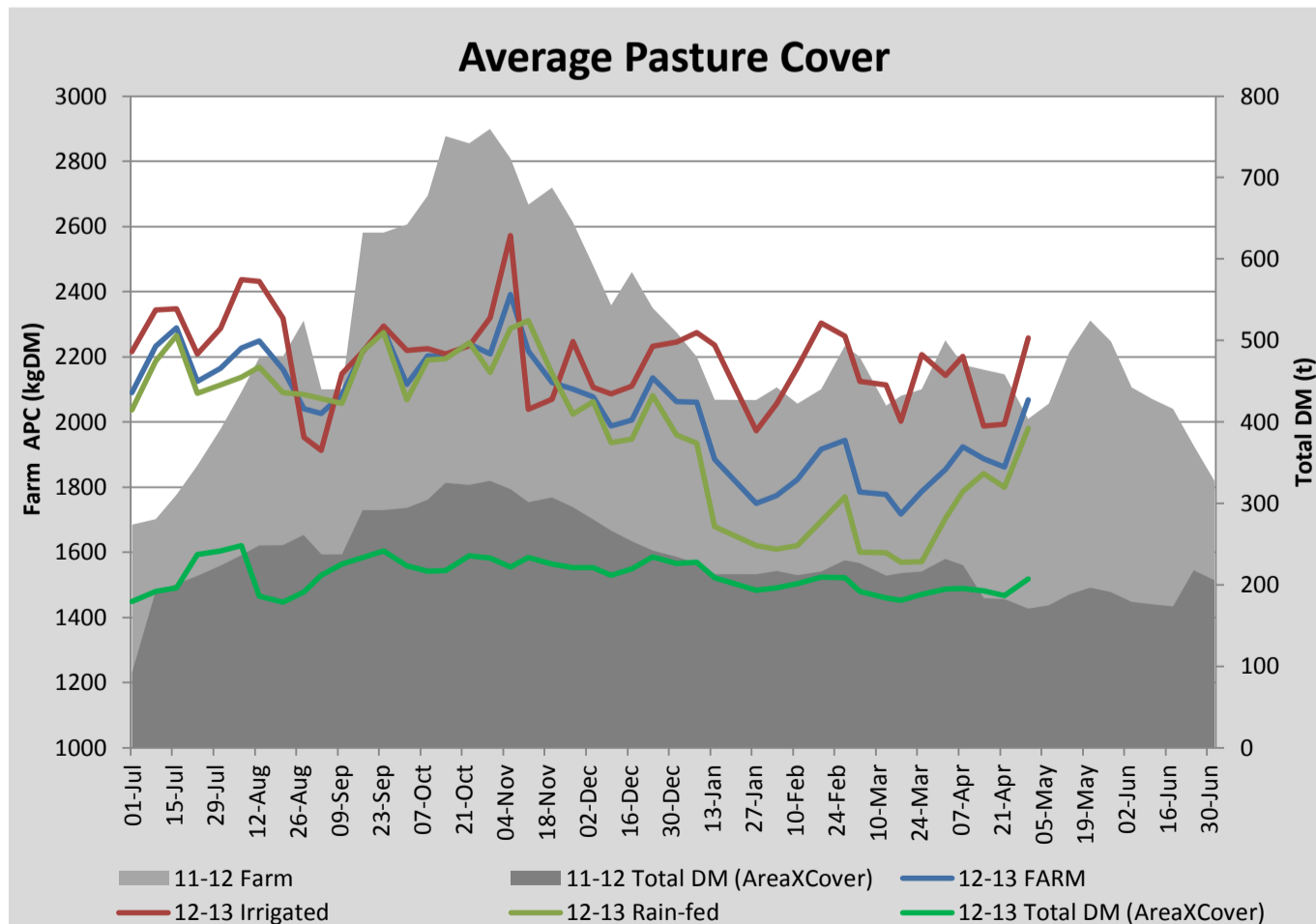
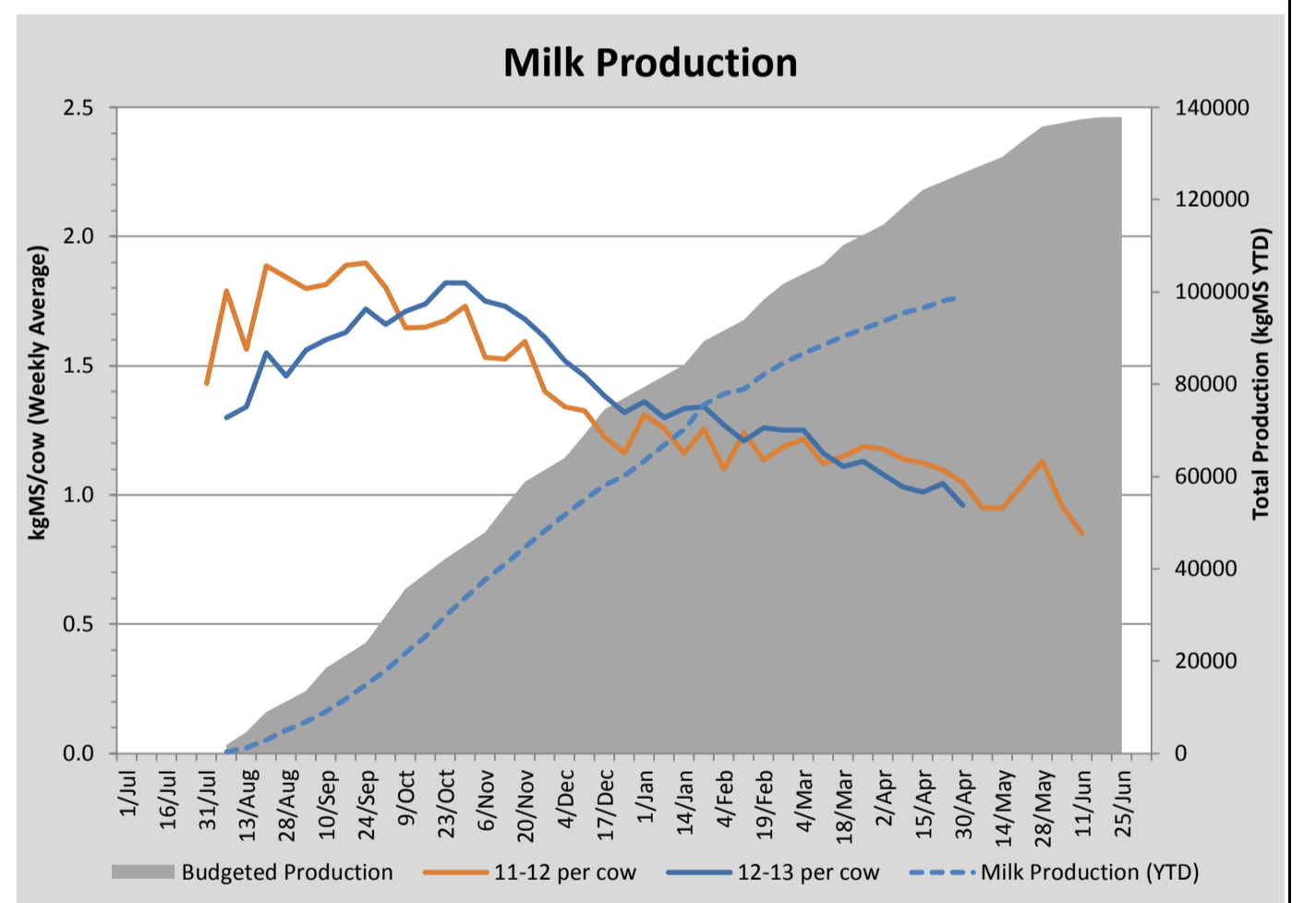
Key Summary Points

- Good growth rates have helped us lift average cover and we are now on par with this time last year
- Extra work being completed at the moment includes roadside boundary fencing and repairs to leaking irrigation mains
- Key focus this week on keeping overall rotation length on target while cleaning up residuals behind the More Milk From Forage (MMFF) research trial

PASTURE INFORMATION	Farm			Irrigated			Rain-fed		
	Last Week	This Week	Variation	Last Week	This Week	Variation	Last Week	This Week	Variation
Grazed milking area (ha)	100.3	100.3	0.0	31.7	31.7	0.00	68.6	68.6	0.00
Rotation Length (days)	56	84		26	40		114	172	
Grazing allocation per day (ha)	1.8	1.2	0.60	1.2	0.8	0.40	0.6	0.4	0.20
Average time since last grazed (days)	42	43	0	26	27	-1	50	50	0
Leaf appearance rate (days per leaf)	12	14	2	12	14	2	12	14	2
Average Pasture Cover (kgDM/ha)	1861	2068	207	1993	2258	265	1800	1980	180
Pasture Growth Rate (kgDM/ha/day)	23	37	15	27	47	20	20	33	13
Post Grazing Biomass (kgDM/ha)	1350	1400	50						
Nitrogen applied YTD (kgN/ha)	250	250	0	0	0	0	0	0	0

*Please note all pasture calculations detailed above are based on the current Grazed Milking Area

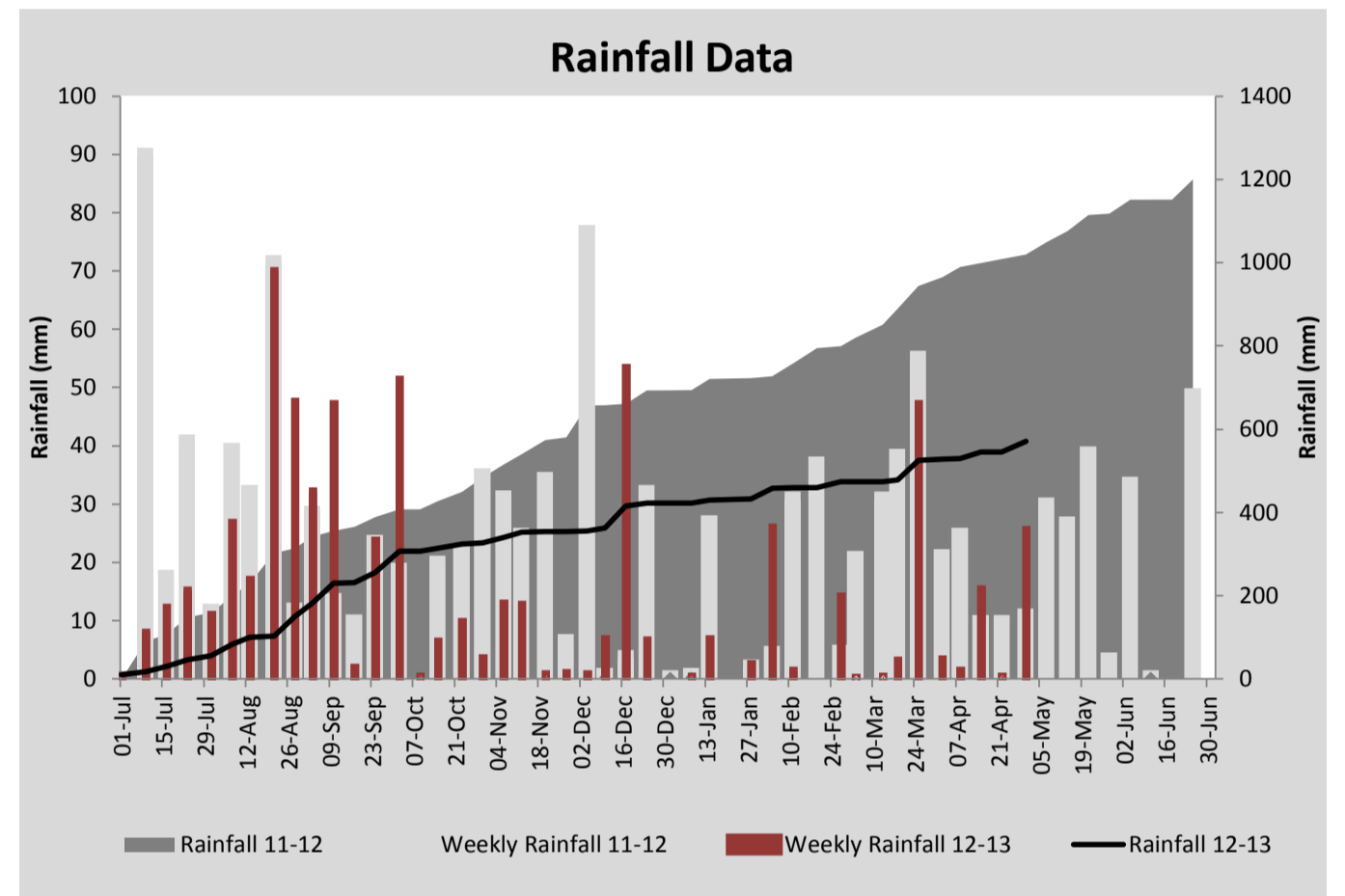
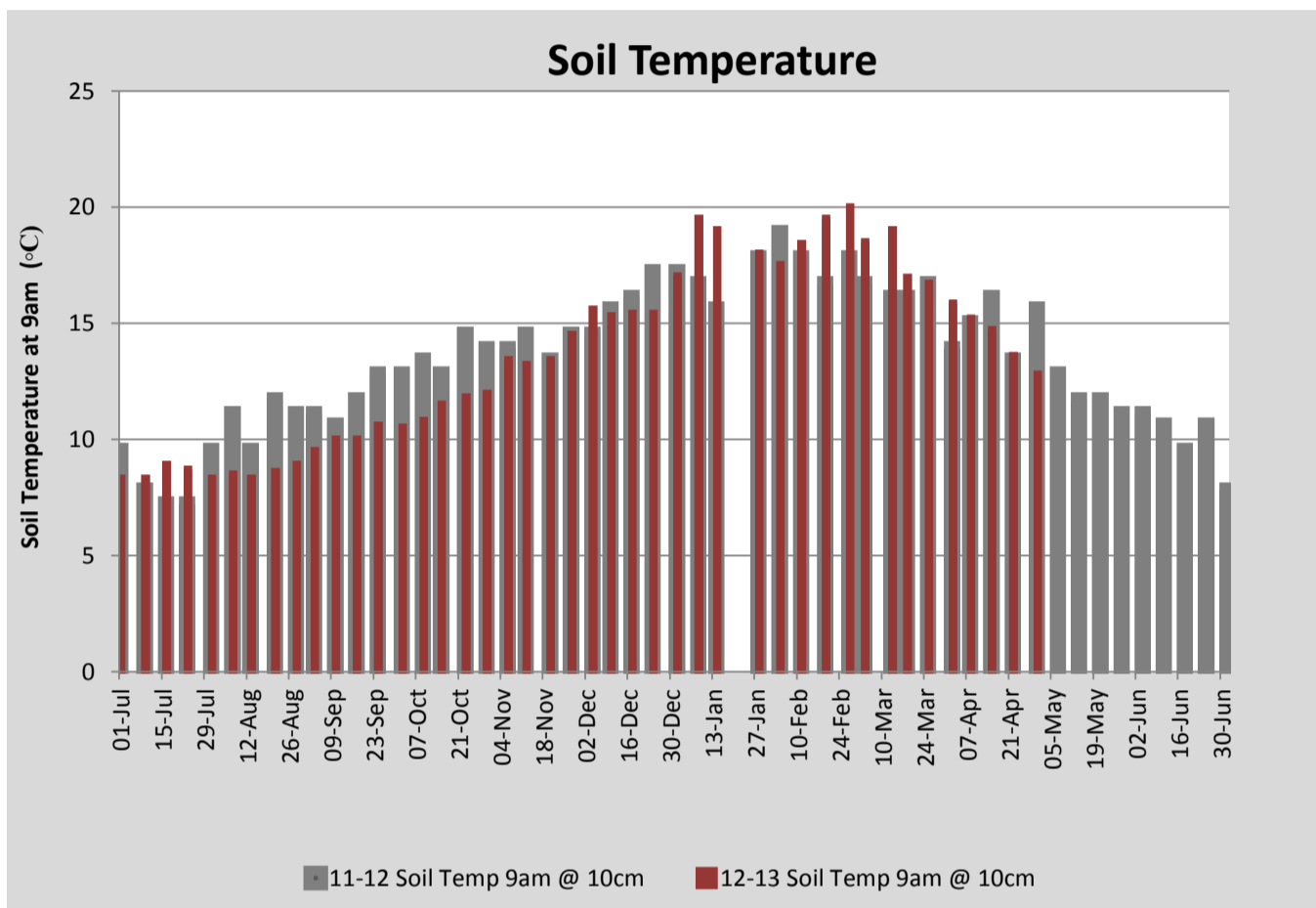
MILK PRODUCTION	Last Week	This Week	Variation
No cows in milk (vat)	160	160	0.00
Litres per cow	12.6	11.5	1.14
% Fat	4.77	4.85	0.08
% Protein	3.52	3.53	0.01
MS/cow/day	1.04	0.96	0.08
MS/ha/day	1.49	1.37	0.12
BMCC	185	177	8.00
Average Liveweight (kg)			
	Budget	To Date	Variation
Total Milk Production (kgMS)	125740	99007	79%
MS/ha YTD	1123	884	-239



Last 7 days					
Milkers Diet	kg DM	ME	CP	NDF	\$/cow
Pasture Intake	9.0	11.0	0.0	0.0	0.0
Concentrates	5.0	11.0	0.0	0.0	0.0
Silage	3.0	8.5	0.0	0.0	0.0
Grazed forage	0.0	0.0	0.0	0.0	0.0
Other feeds	0.0	0.0	0.0	0.0	0.0
Total	17	179.5	0	0	0
Target	17		0	0	0



Cows sorted for grazing in the MMFF trial. Plantain in the foreground.



Analysis			
Expected growth rate next 7 days (kgDM/ha/day)	30	Target Leaf Grazing Stage	3.0
Total Demand from Pasture (kgDM/ha/day)	17	Predicted APC 7 days time	2157
APC balance (kgDM/ha/day)	13	Predicted APC Change	89.2

Discussion

Limiting the area grazed per day for the last week has paid off and good growth rates have increased our average pasture cover up to the same level as this time last year. With ad-lib access being offered for the 64 cows in the MMFF trial over the next three weeks we are likely to have to increase the area used per day. However, we will aim to stay on an average 60 day rotation over this period in order to continue to build average cover to our dry off target of 2200kgDM/ha. We have secured another 10t of silage (@\$320/tDM!) but will predominately use this to supplement the R1 and R2 mobs (where other supplementary feeding options are limited). Therefore, over the coming 3 weeks the milkers will have minimal silage inputs (approx. 1kgDM/cow/day) leaving a daily demand of 17kgDM/ha/day (over the 100ha currently included in the rotation). There may be some grazing requirement for other mobs (e.g. dry cows) on the milking platform over this period which will further increase demand. However, if we can maintain similar growth to this time last year we should continue to build average cover towards our target.

30 April 2013

