

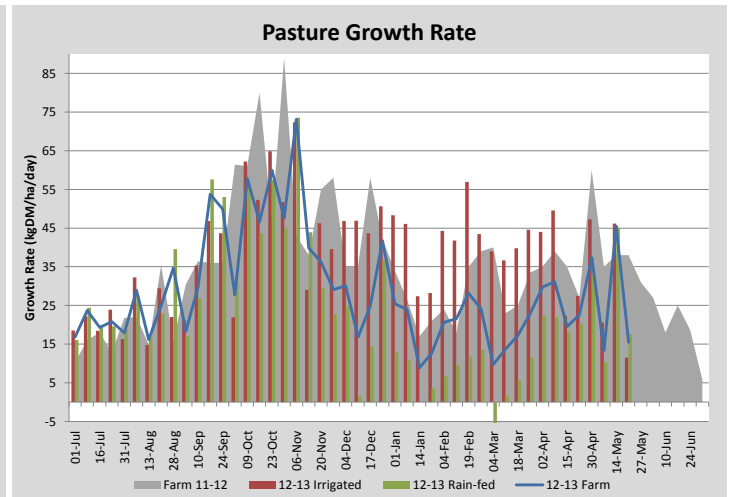
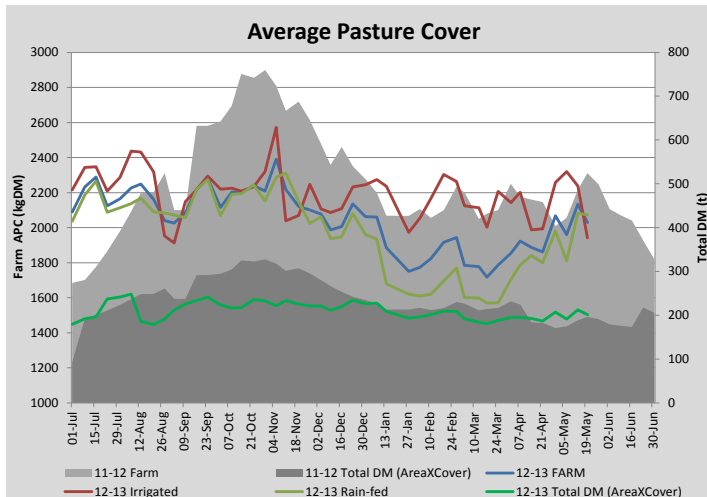
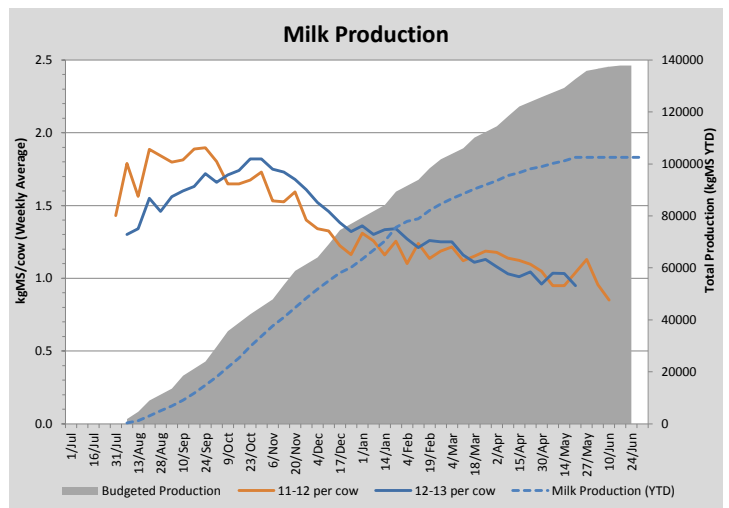
## Key Summary Points

- 1** Remaining milkers have just been dried off with the focus on maximising profitability for next season
- 2** Soil temperature has dropped in the past week and growth rates have followed
- 3** Key focus this week is keeping rotation length in check with multiple herds

PASTURE INFORMATION	Farm			Irrigated			Rain-fed		
	Last Week	This Week	Variation	Last Week	This Week	Variation	Last Week	This Week	Variation
Grazed milking area (ha)	99.4	99.4	0.0	33.0	33.0	0.00	66.4	66.4	0.00
Rotation Length (days)	58	58		41	41		74	74	
Grazing allocation per day (ha)	1.7	1.7	0.00	0.8	0.8	0.00	0.9	0.9	0.00
Average time since last grazed (days)	43	43	0	38	38	0	45	45	0
Leaf appearance rate (days per leaf)	15	16	1	15	16	1	15	16	1
Average Pasture Cover (kgDM/ha)	2134	2030	-104	2238	1941	-297	2081	2074	-7
Pasture Growth Rate (kgDM/ha/day)	45	16	-30	46	11	-35	45	18	-28
Post Grazing Biomass (kgDM/ha)	1550	1400	150						
Nitrogen applied YTD (kgN/ha)	254	254	0	3	0	-3	0	0	0

\*Please note all pasture calculations detailed above are based on the current Grazed Milking Area

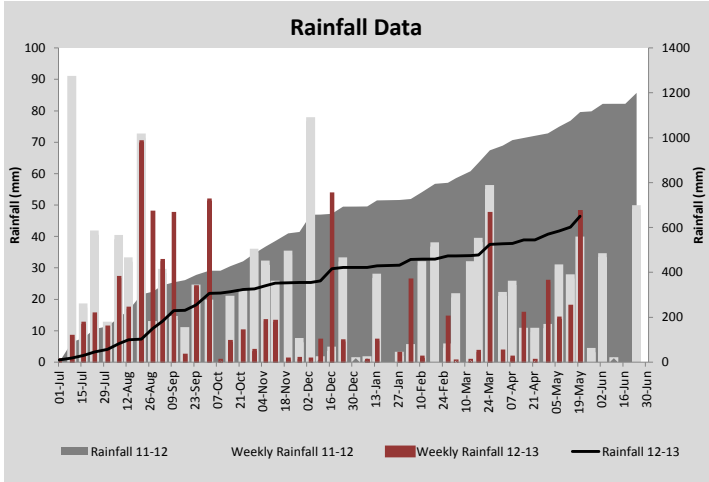
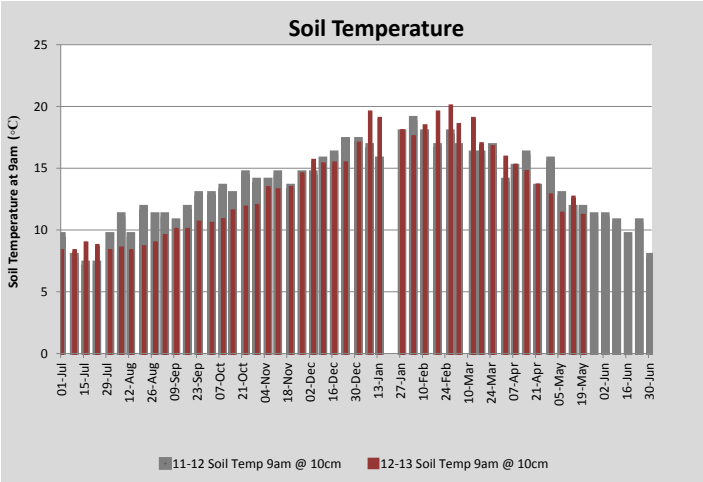
MILK PRODUCTION	Last Week	This Week	Variation
No cows in milk (vat)	160	160	0.00
Litres per cow	12.5	11.0	1.54
% Fat	4.56	4.75	0.19
% Protein	3.67	3.74	0.07
MS/cow/day	1.03	0.95	0.08
MS/ha/day	1.47	1.36	0.12
BMCC	192	192	0.00
Average Liveweight (kg)			
	Budget	To Date	Variation
Total Milk Production (kgMS)	132667	102526	77%
MS/ha YTD	1185	915	-269



Last 7 days					
Milkers Diet	kg DM	ME	CP	NDF	\$/cow
Pasture Intake	13.5	11.0	0.0	0.0	0.0
Concentrates	3.5	11.0	0.0	0.0	0.0
Silage	0.0	0.0	0.0	0.0	0.0
Grazed forage	0.0	0.0	0.0	0.0	0.0
Other feeds	0.0	0.0	0.0	0.0	0.0
<b>Total</b>	<b>17</b>	<b>187</b>	<b>0</b>	<b>0</b>	<b>0</b>
<b>Target</b>	<b>17</b>		<b>0</b>	<b>0</b>	<b>0</b>



Winter Kale Crop (2-3 weeks from grazing)



Analysis			
Expected growth rate next 7 days (kgDM/ha/day)	15	Target Leaf Grazing Stage	3.0
Total Demand from Pasture (kgDM/ha/day)	16	Predicted APC 7 days time	2025
APC balance (kgDM/ha/day)	-1	Predicted APC Change	-4.8

## Discussion

All cows have now been dried off. All cows will be condition scored this week and we will continue to run two herds based on weight gain required. We will combine the R2 with the lighter cows to simplify management and will start running the R2 through the dairy to familiarise them over the coming weeks. A drop in soil temperature has reduced pasture growth rates and our average pasture cover has dropped over the past week (probably influenced by over-estimation in last weeks report due to wet conditions when sampling). Multiple herds (dry cows, R2 and R1) will be grazing the milking platform for the next week. This means we will temporarily be using 1/60th of the platform per day for this period. However, we aim to average using 1/100th of the milking platform per day over much of the dry period and will achieve this by substantially reducing demand on the milking platform (and subsequently extending rotation length) when feeding off the kale crop on the runoff platform (early June planned start).

# 20 May 2013

