

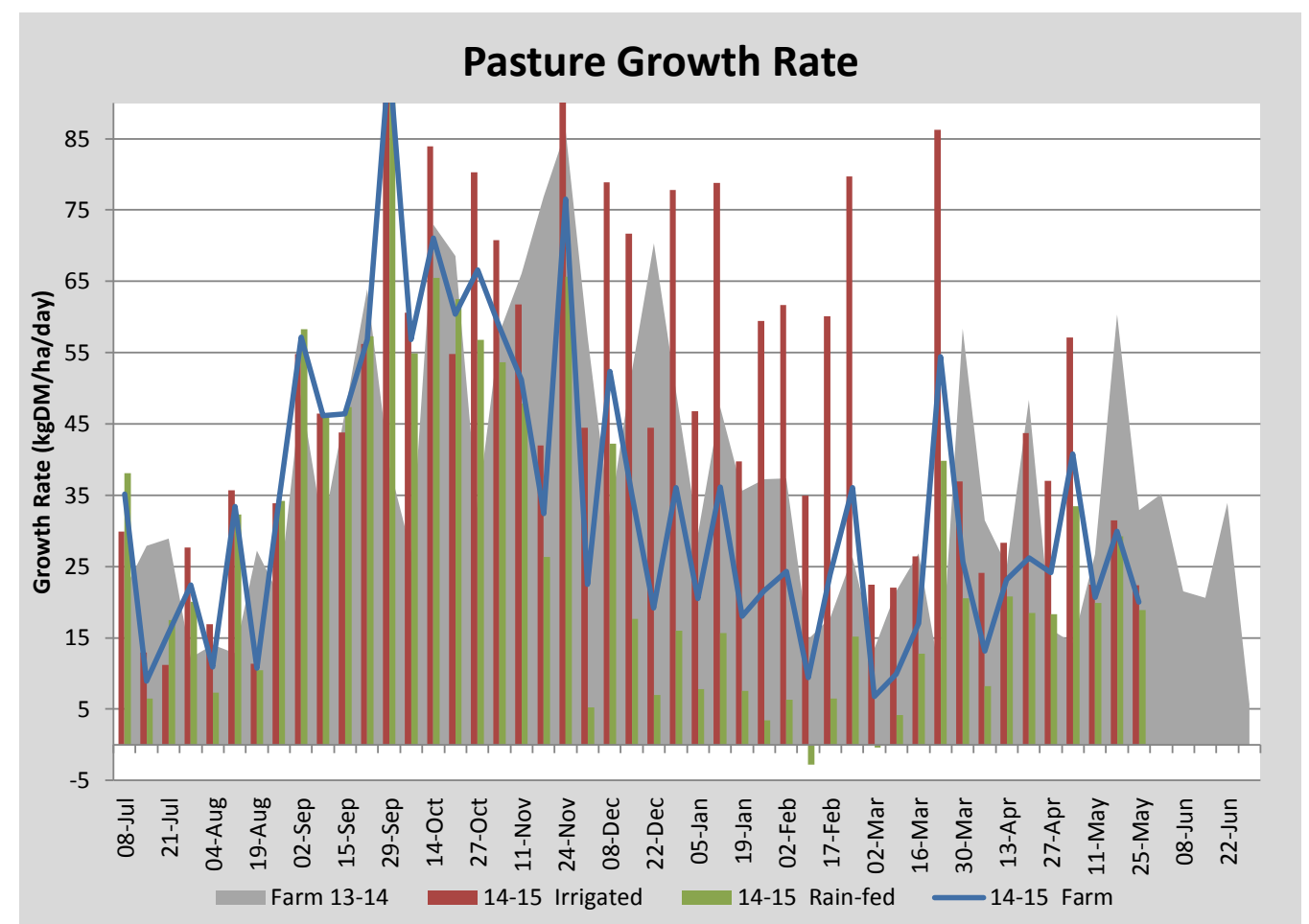
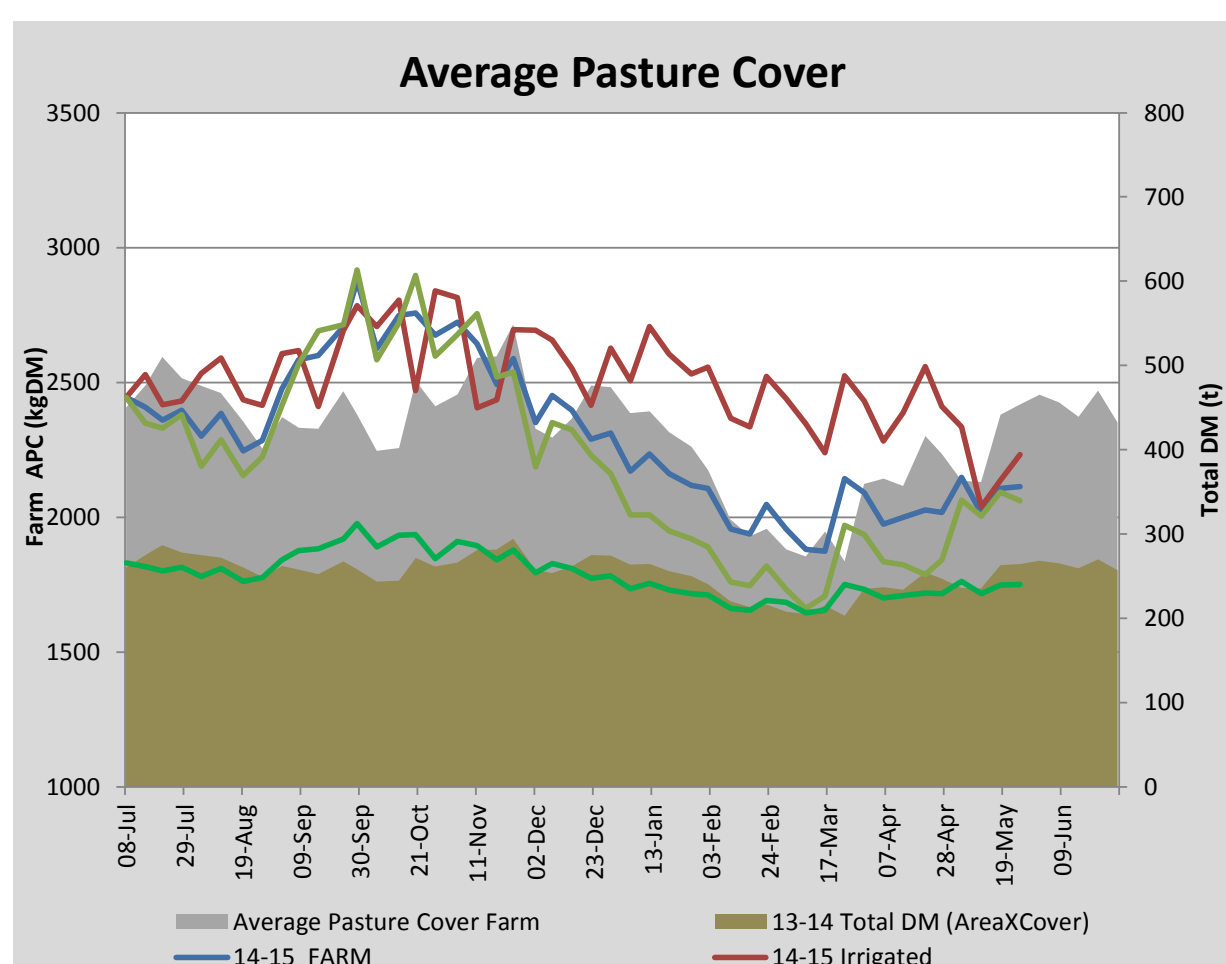
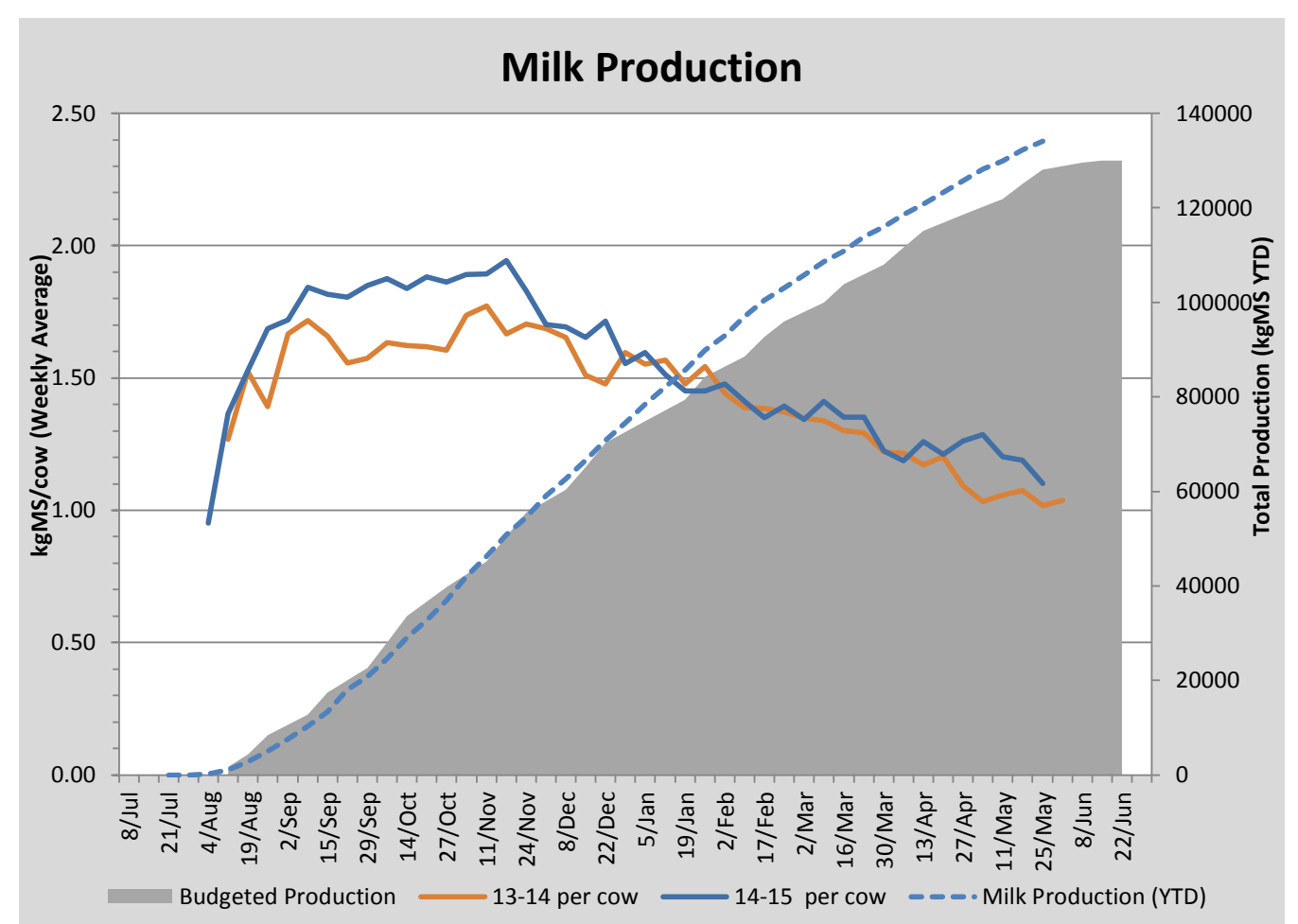
Key Summary Points

1	Average pasture cover held this week at 2113kgDM/ha.
2	Nitrogen (urea) was applied to all grazed paddocks at 46kgN/ha this week.
3	Key focus for the coming weeks is to spray renovated pastures for broad leaf weeds.

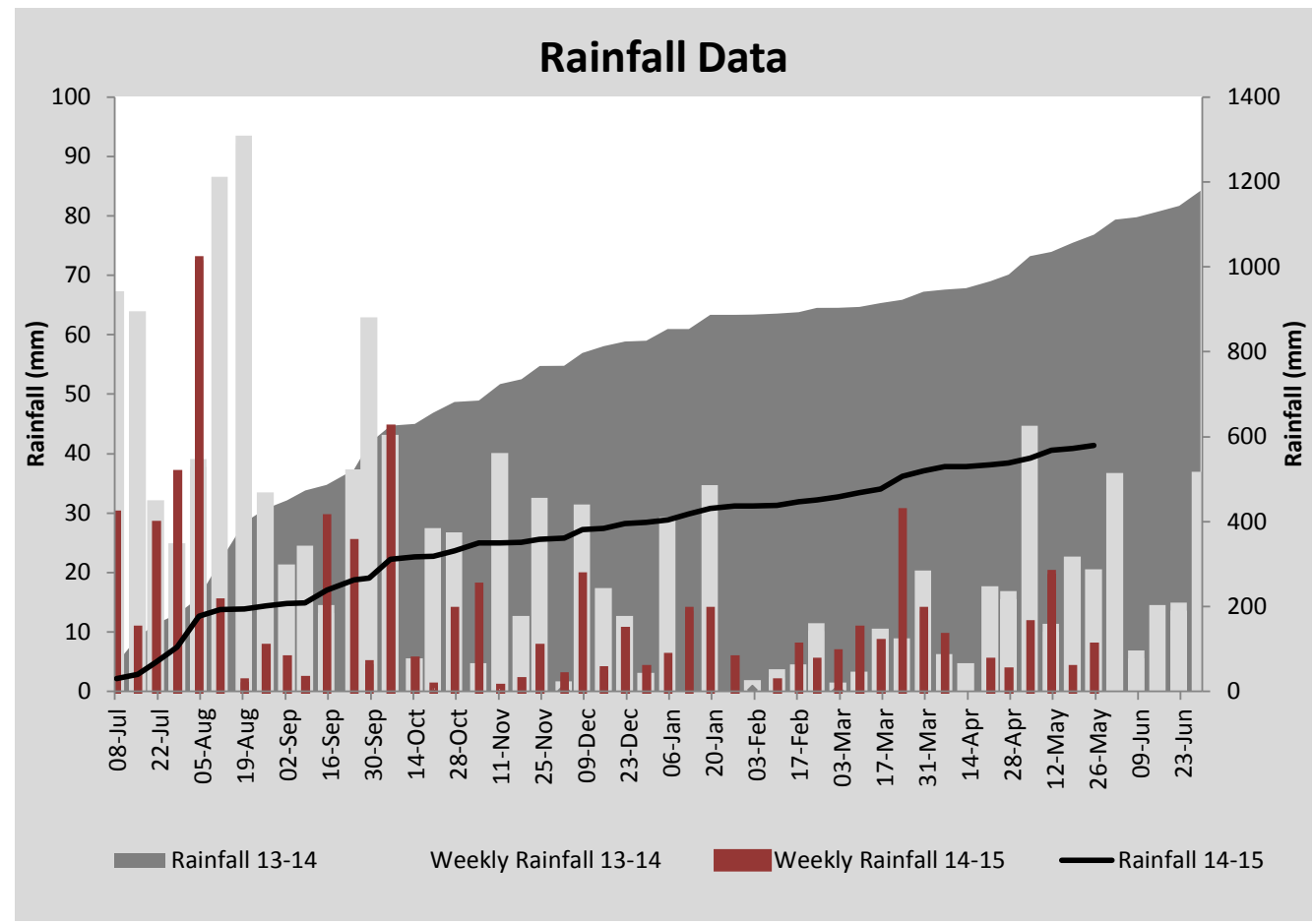
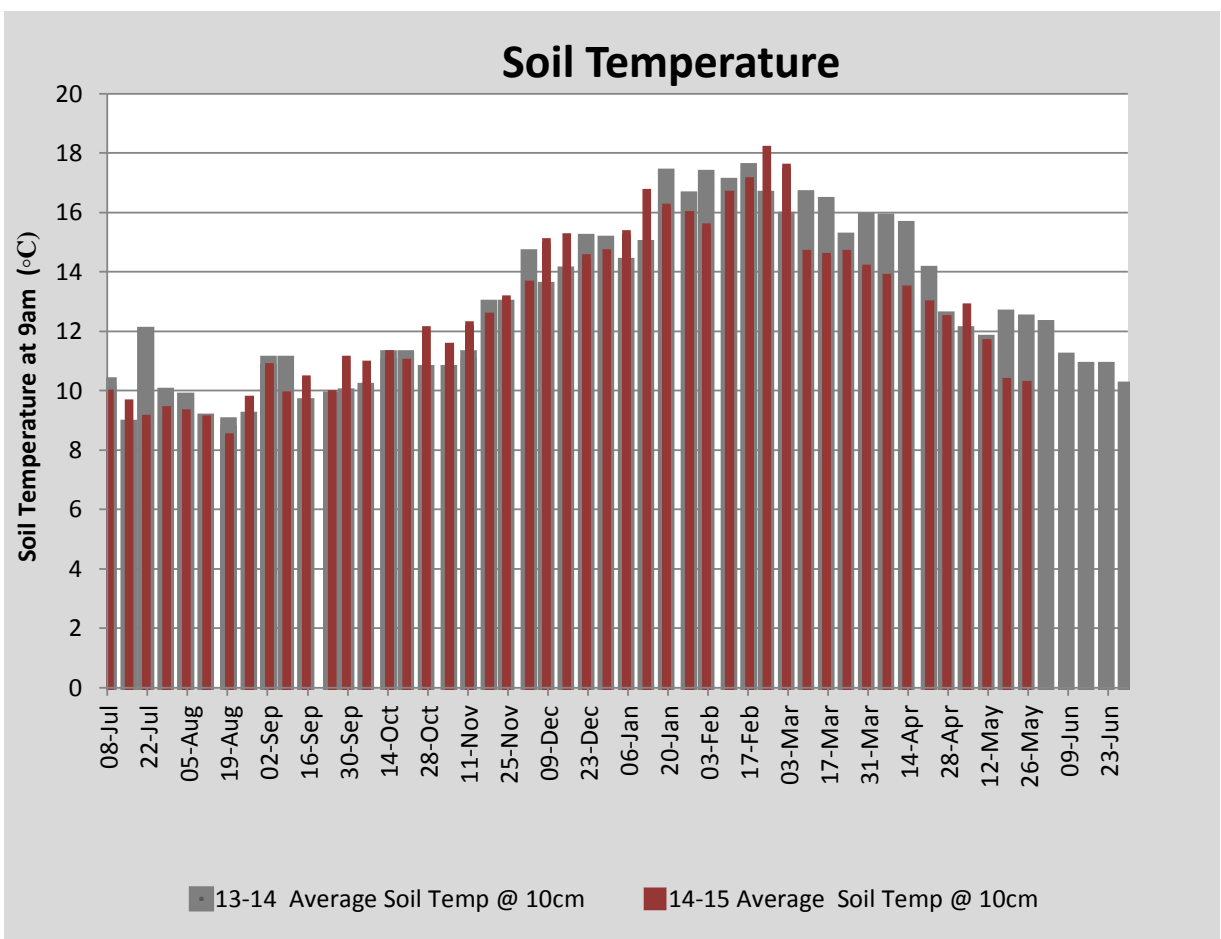
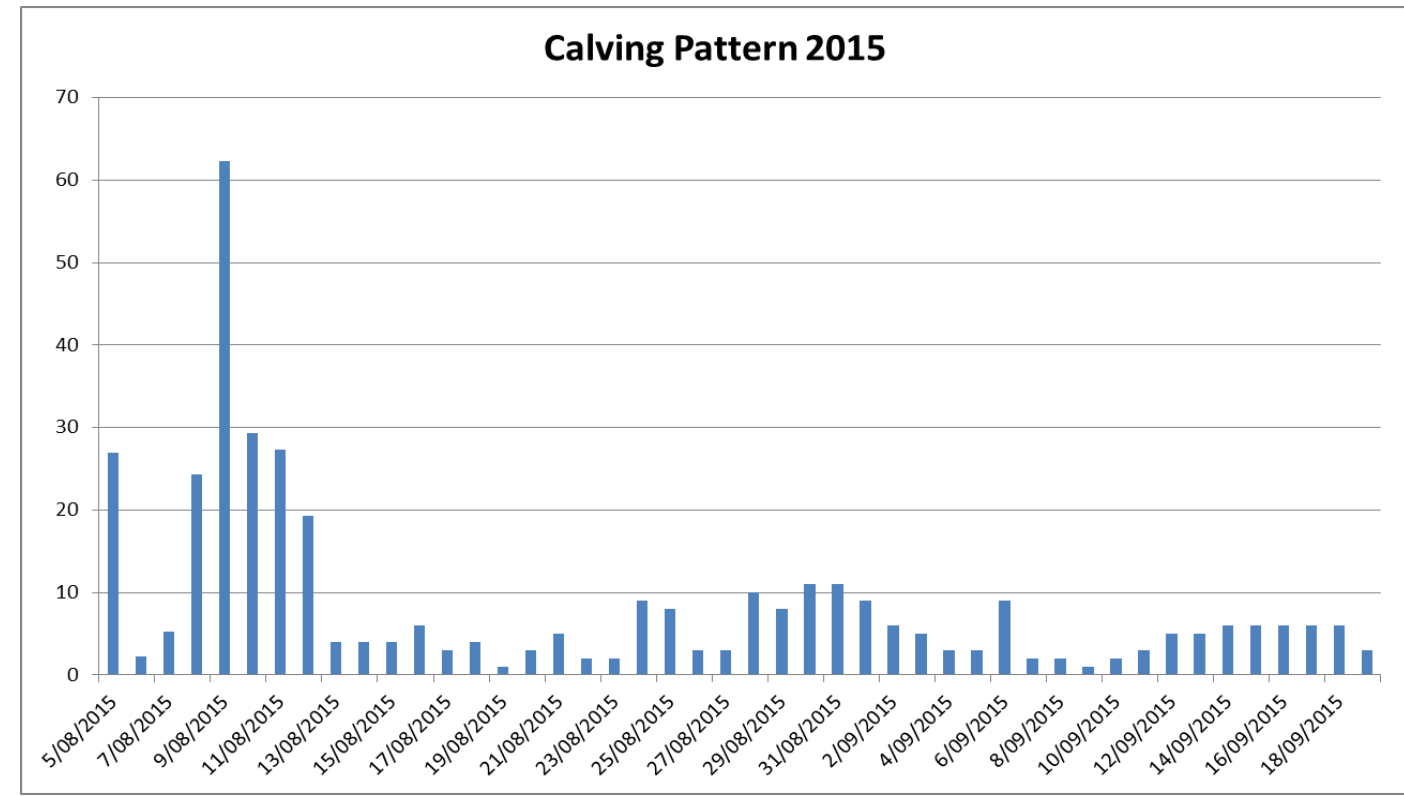
PASTURE INFORMATION	Farm			Irrigated			Rain-fed		
	Last Week	This Week	Variation	Last Week	This Week	Variation	Last Week	This Week	Variation
Grazed milking area (ha)	113.6	113.6	0.0	35.1	35.1	0.0	78.4	78.4	0
Rotation Length (days)	71	60	-11	50	176	125	87	46	-41
Grazing allocation per day (ha)	1.6	1.9	0.3	0.7	0.2	-0.5	0.9	1.7	0.8
Average time since last grazed (days)	83	60	-22	46	47	1	99	66	-33
Leaf appearance rate (days per leaf)	15	15	0	14	14	0	15	15	0
Average Pasture Cover (kgDM/ha)	2107	2113	6	2137	2232	95	2094	2060	-34
Pasture Growth Rate (kgDM/ha/day)	30	20	-10	32	22	-9	29	19	-10
Post Grazing Biomass (kgDM/ha)	1596	1575	-21						
Nitrogen applied YTD (kgN/ha)	155	171	16	0	18	18	0	15	15

*Please note all pasture calculations detailed above are based on the current Grazed Milking Area

MILK PRODUCTION	Last Week	This Week	Variation
Average No. cows in milk (vat)	240	239	-1
Litres per cow	13.2	12.1	-1.1
% Fat	5.06	5.14	0.08
% Protein	3.93	4.01	0.08
MS/cow/day	1.19	1.10	-0.09
MS/ha/day	2.53	2.33	-0.20
BMCC	144	181	38
Average Liveweight (kg)	549	0	-549
	Budget	To Date	Variation
Total Milk Production (kgMS)	128,074	134,089	105%
MS/ha YTD	1144	1219	76



Last 7 days					
Milkers Diet	kg DM	MJ ME	CP (%)	NDF (%)	\$/cow
Pasture Intake	9.7	13.2	19.3	44.9	0.0
Concentrates	5.0	12.0	16.0	16.5	0.0
Silage	0.0	0.0	0.0	0.0	0.0
Grazed forage	0.0	0.0	0.0	0.0	0.0
Other feeds	1.3	9.0	14.0	58.0	0.0
Total	16	199.6	17.8	37.1	0
Target		191	16-18	>33	0



Analysis			
Expected growth rate next 7 days (kgDM/ha/day)	25	Target Leaf Grazing Stage	2.5-3.0
Total Demand from Pasture (kgDM/ha/day)	21	Predicted APC 7 days time	2140
APC balance (kgDM/ha/day)	4	Predicted APC Change	27.2

Discussion

Average pasture cover held at 2115kgDM/ha with cool conditions (soil temp 10cm 10.2°C) contributing to poor growth rates across the platform. With limited hay and silage at hand, 4ha of the run off was grazed with the milking herd this week and 1.3 kg hay/cow/day was fed to hold the rotation at 60 days on the milking platform. Urea was applied to 39ha of the milking platform this week at 46kgN/ha. Autumn renovated pastures are being grazed with R1 heifers. A large amount of cape weed has germinated in the renovated pastures and so these paddocks will be sprayed (weather permitting) over the coming weeks with MCPA.

25 May 2015

