

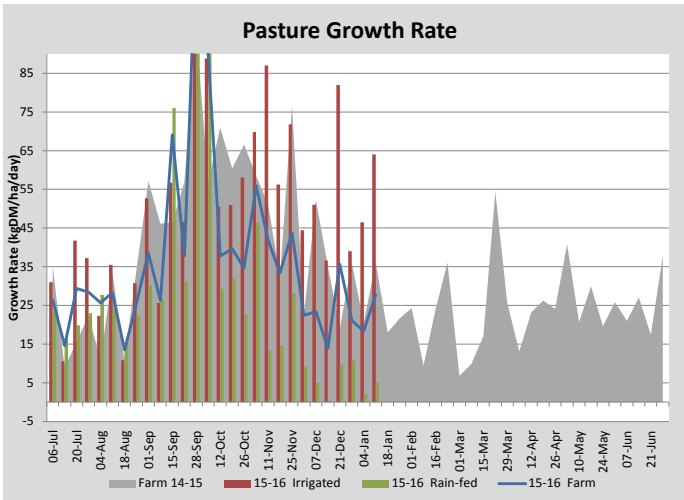
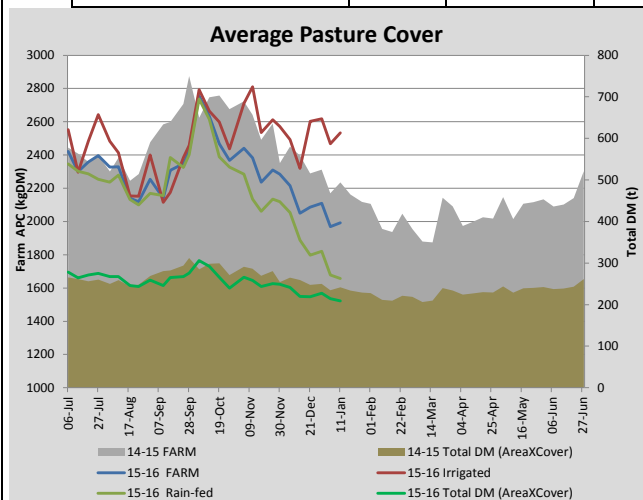
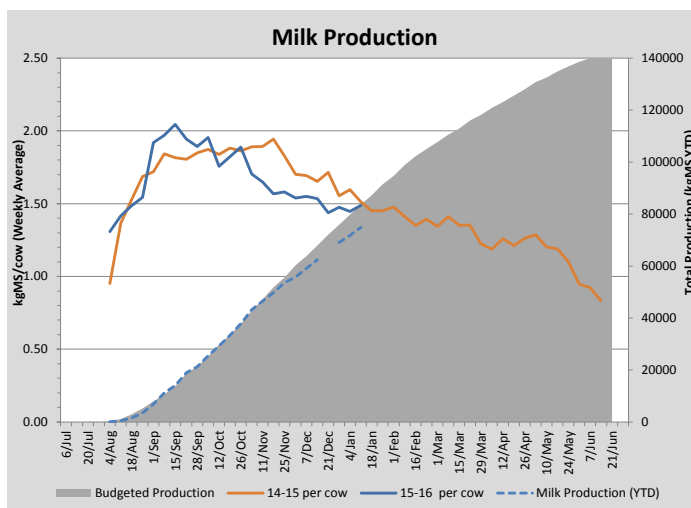
Key Summary Points

- Pastures covers have climbed slightly on the irrigated area and continue to fall on the rain fed pastures.
- Given the low pasture covers on the rain-fed paddocks, basically all of the pasture component of the diet is coming from irrigated pasture, silage input will be increased over the next week from 2 kgDM/cow/day to 2.5 kg DM/cow/day.
- Per cow production is holding between 1.4-1.5 kg MS day which is identical to this time last year, milking 58 less cows in total compared to this time last year.

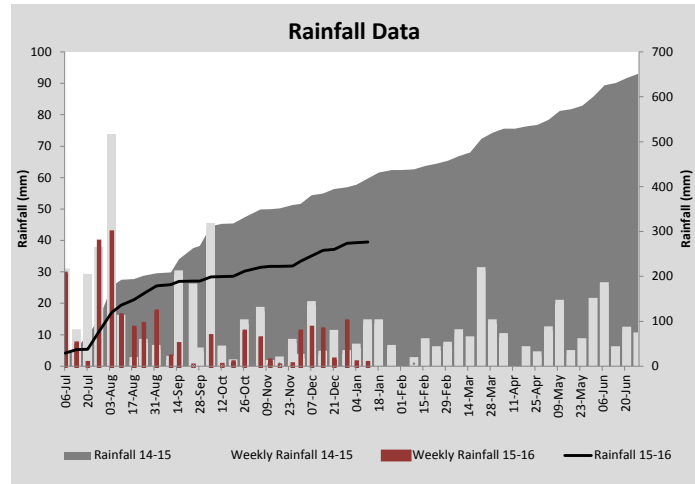
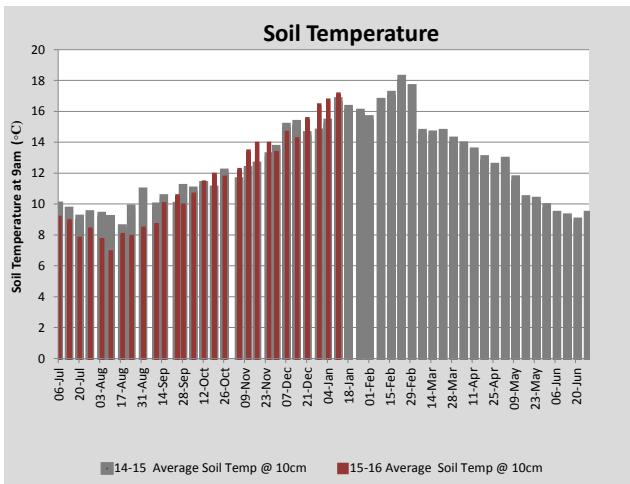
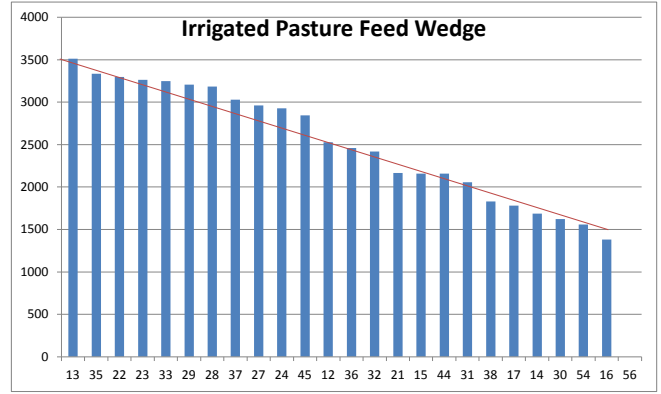
PASTURE INFORMATION	Farm			Irrigated			Rain-fed		
	Last Week	This Week	Variation	Last Week	This Week	Variation	Last Week	This Week	Variation
Grazed milking area (ha)	109.1	104.7	-4.4	42.2	40.1	-2.1	62.5	64.6	2
Rotation Length (days)	125	95	-30	57	45	-12	406	308	-98
Grazing allocation per day (ha)	0.9	1.1	0.2	0.7	0.9	0.2	0.2	0.2	0.0
Average time since last grazed (days)	59	67	8	35	40	5	73	83	10
Leaf appearance rate (days per leaf)	16	16	0	12	13	1	18	18	0
Average Pasture Cover (kgDM/ha)	1969	1993	24	2468	2533	65	1678	1657	-21
Pasture Growth Rate (kgDM/ha/day)	18	28	9	46	64	18	2	5	3
Post Grazing Biomass (kgDM/ha)	1370	1330	-40						
Nitrogen applied YTD (kgN/ha)	61	66	5	0	12	12	0	0	0

*Please note all pasture calculations detailed above are based on the current Grazed Milking Area

MILK PRODUCTION	Last Week	This Week	Variation
Average No. cows in milk (vat)	304	302	-2
Litres per cow	19.1	19.1	-0.0
% Fat	4.26	4.45	0.18
% Protein	3.34	3.33	-0.01
MS/cow/day	1.45	1.49	0.04
MS/ha/day	3.89	3.98	0.08
BMCC	127,857	179,143	51,286
Average Liveweight (kg)	479	483	4
	Budget	To Date	Variation
Total Milk Production (kgMS)	83,611	74,871	90%
MS/ha YTD	733	704	-30



Last 7 days					
Milkers Diet	kg DM	MJ ME	CP (%)	NDF (%)	\$/cow
Pasture Intake	7.0	0.0	0.0	0.0	0.0
Concentrates	8.0	12.5	16.0	16.0	0.0
Silage	2.0	0.0	0.0	0.0	0.0
Grazed forage	1.0	0.0	0.0	0.0	0.0
Other feeds	0.0	0.0	0.0	0.0	0.0
Total	18	100	7.1	7.1	0
Target		191	16-18	>33	0



Analysis			
Expected growth rate next 7 days (kgDM/ha/day)	19	Target Leaf Grazing Stage	2.5-3.0
Total Demand from Pasture (kgDM/ha/day)	22	Predicted APC 7 days time	1970
APC balance (kgDM/ha/day)	-3	Predicted APC Change	-23.0

Discussion

Pasture growth rates lifted this week on the irrigated paddocks which has helped maintain the average pasture cover on this area. Evapotranspiration rates have averaged 5 mm per day in January which means that 25 mm of water needs to be applied every 5 days to keep soil moisture levels in the optimum range. Evapotranspiration rates for other regions are available on the Bureau of Meteorology website (www.bom.gov.au). Nitrogen continues to be applied to the irrigated pasture following grazing. Calves are being supplemented with canola meal to provide them with additional protein as they are grazing rain fed pasture which has low protein levels - calves should have 16% crude protein in their diet to achieve good growth. The young stock will be weighed next week to check their growth rates.

11 January 2016

