

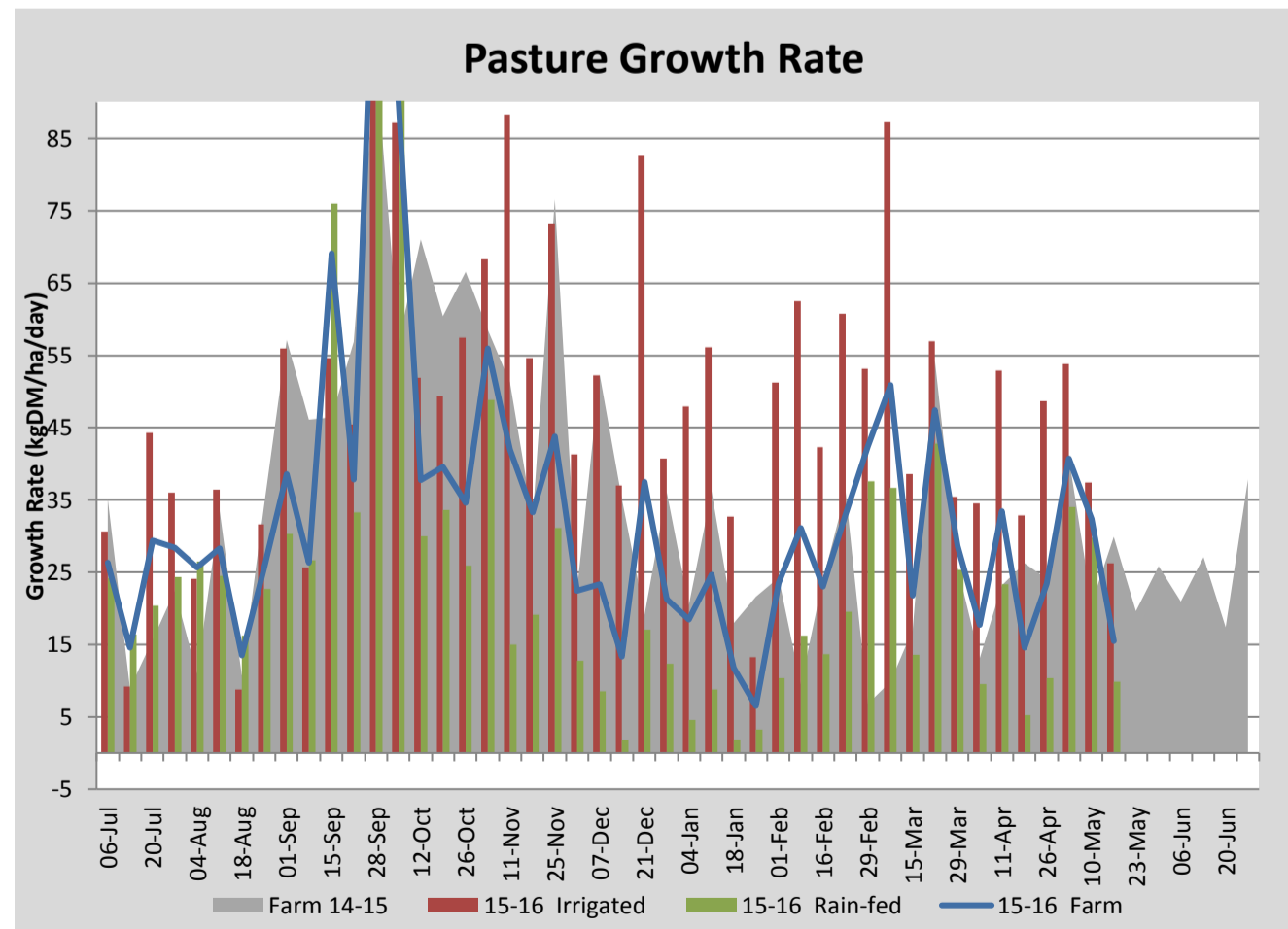
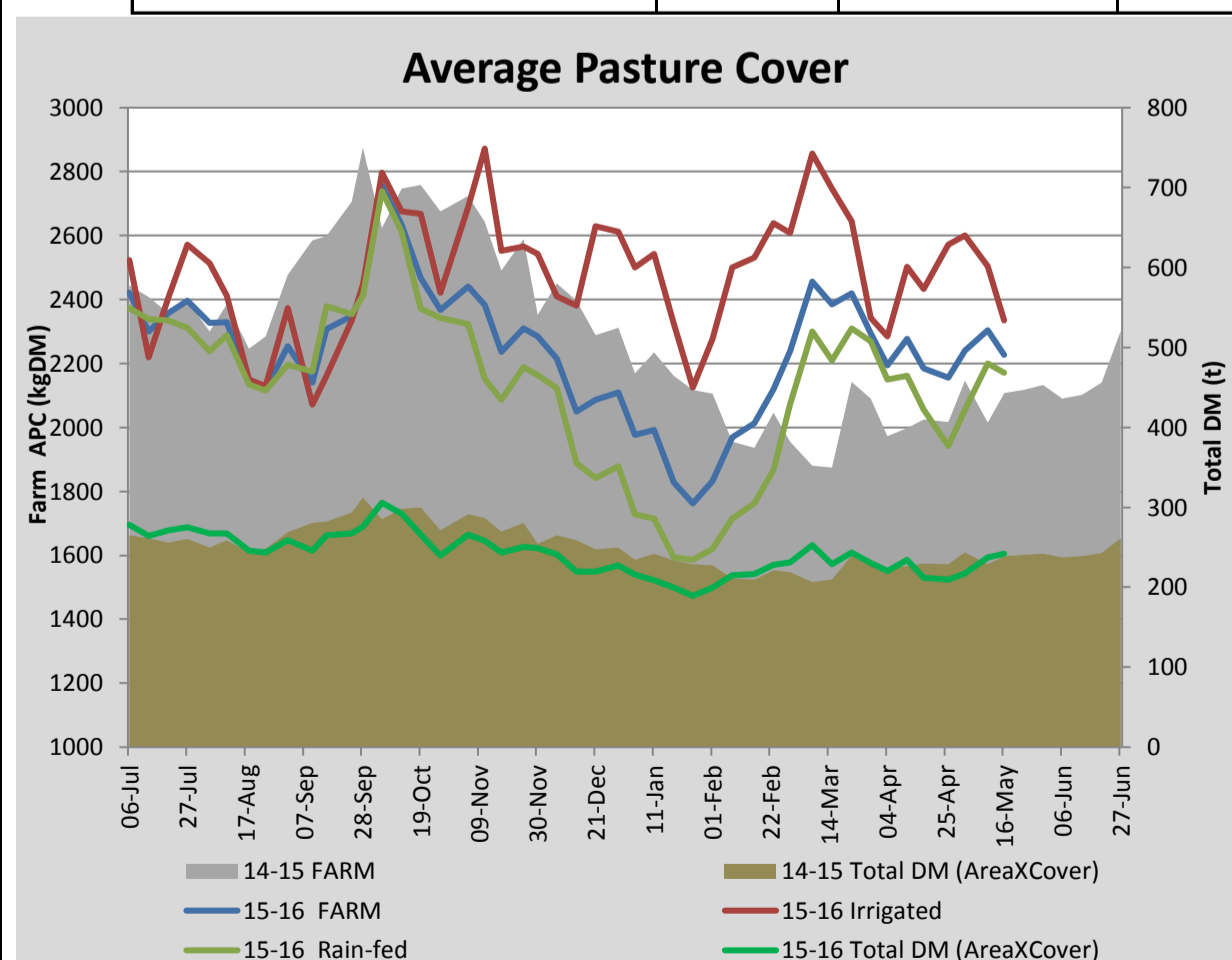
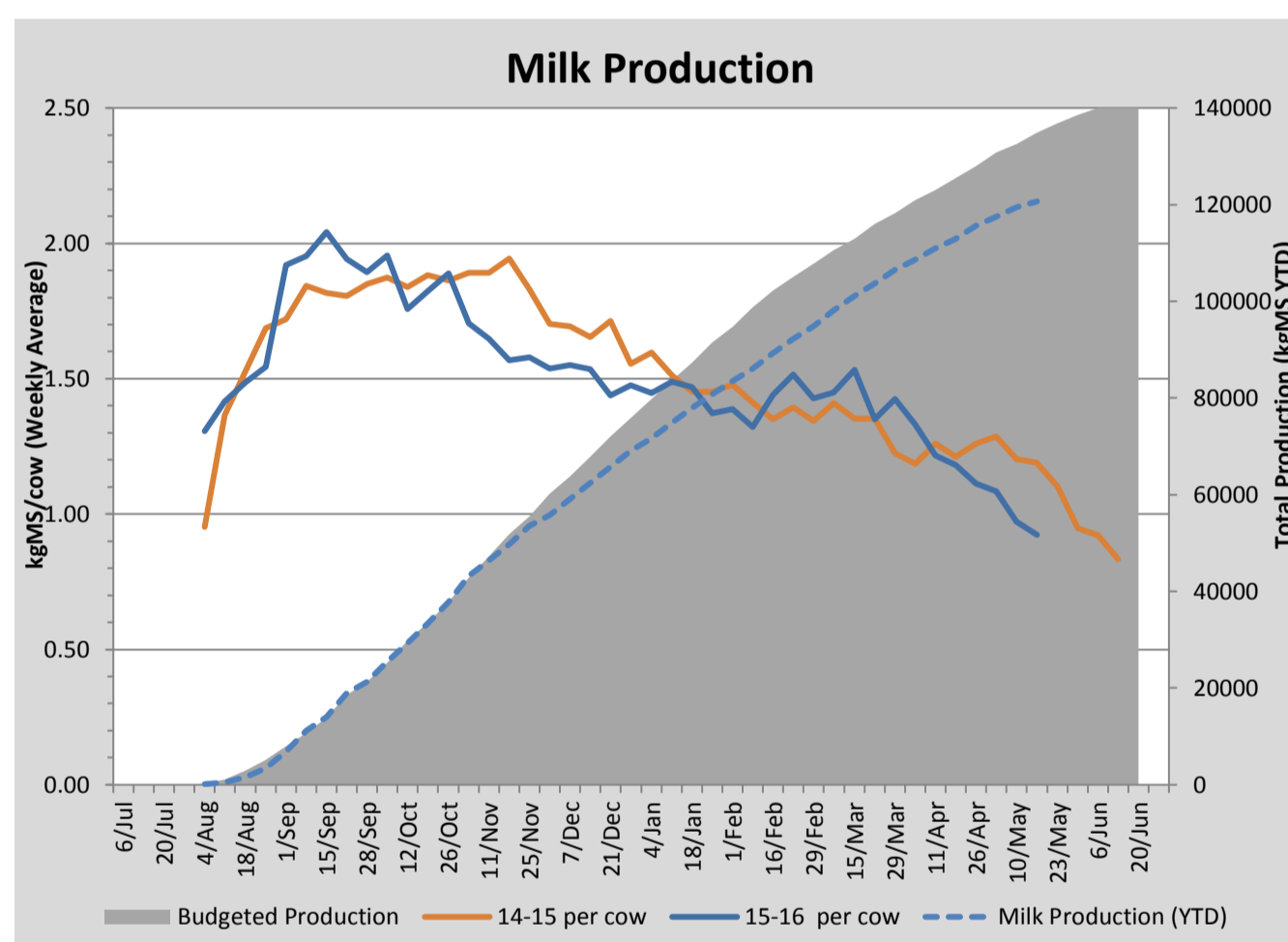
Key Summary Points

- 1 Cow production has dropped slightly during the past week, a combination of the cow's lactation stage and poor weather conditions.
- 2 With paddocks getting wetter and more prone to damage at high stocking rates cows are being moved twice a day.
- 3 To further reduce grazing pressure all empty cows will be culled next week.

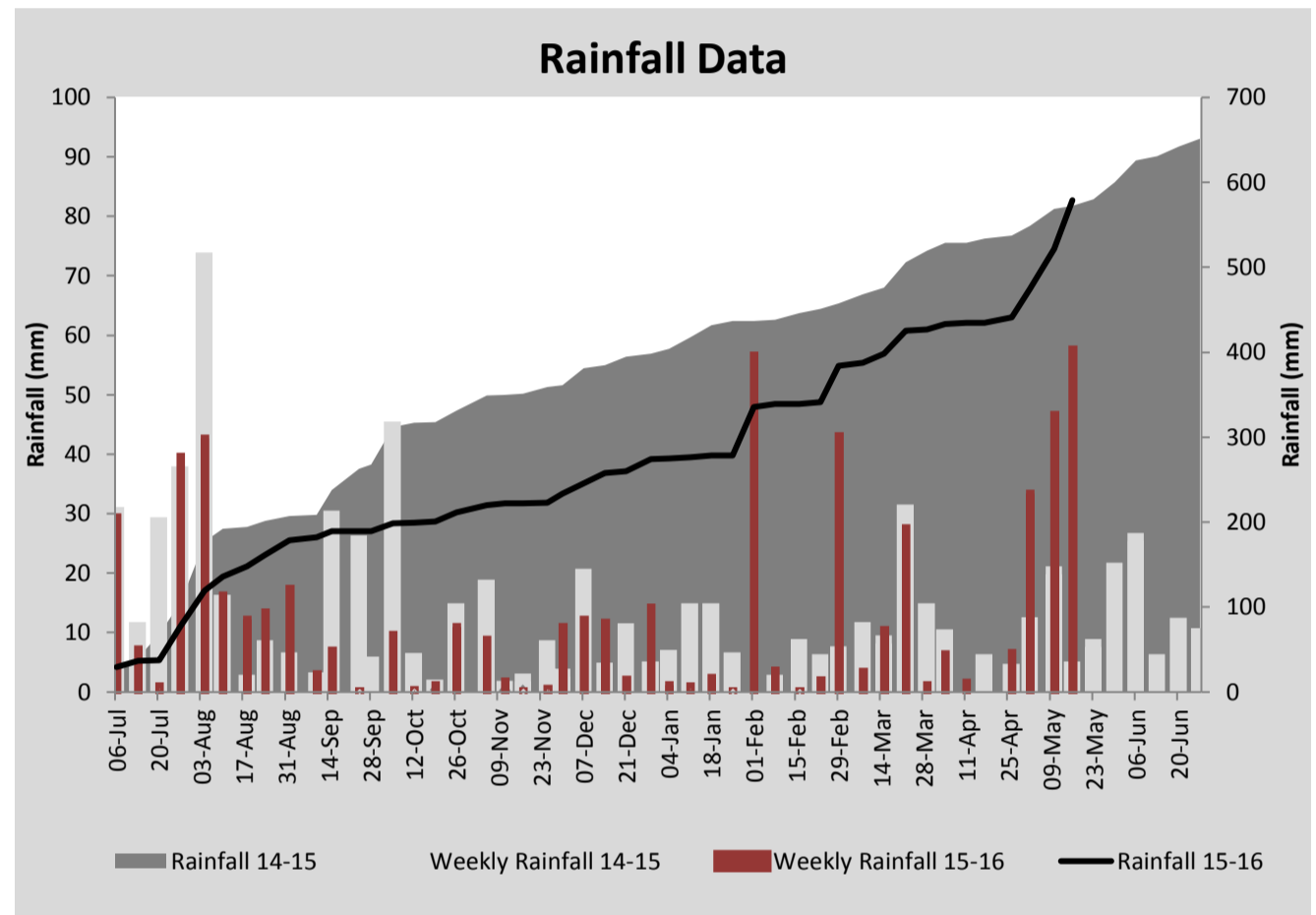
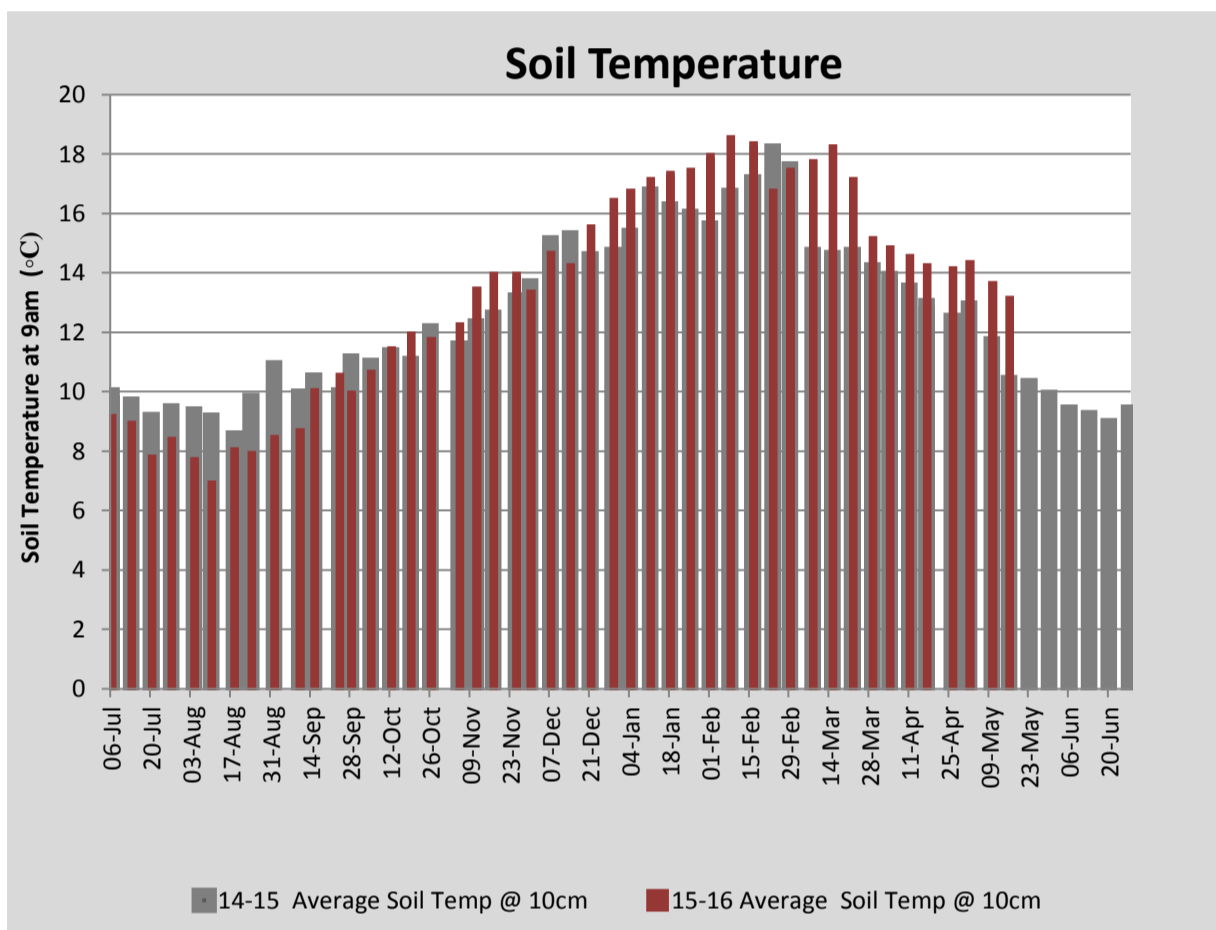
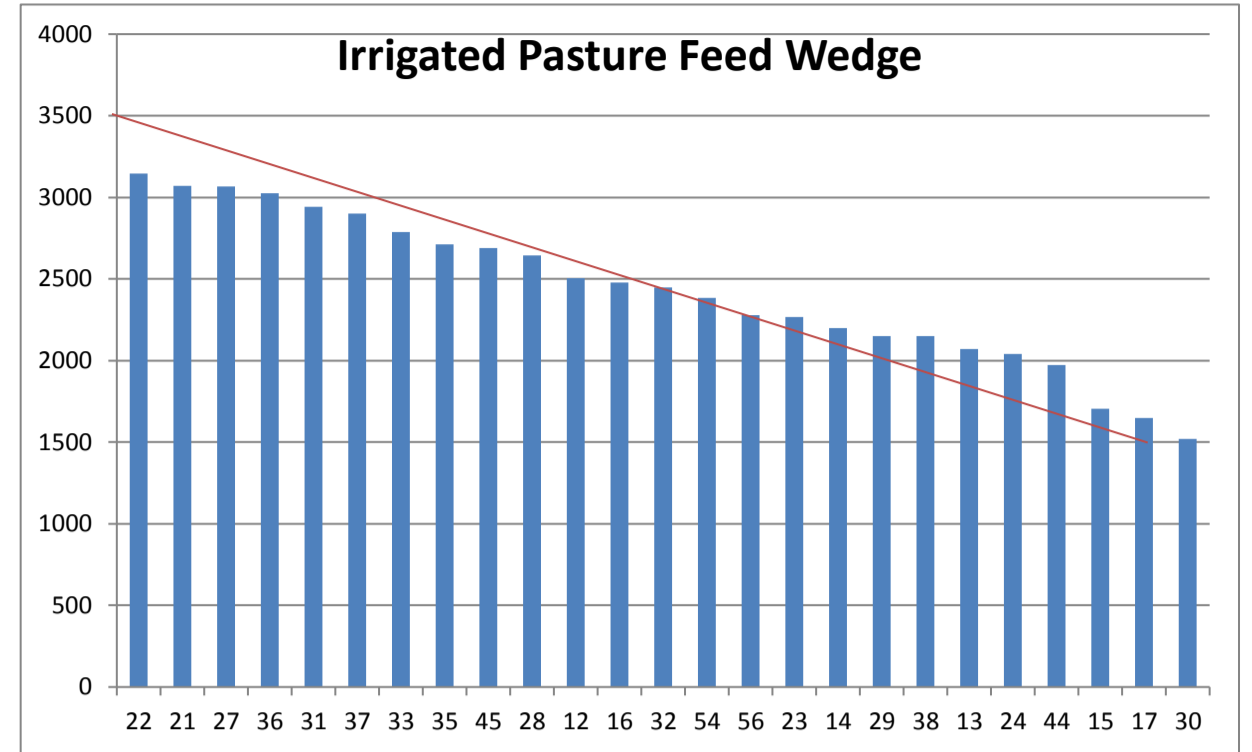
| PASTURE INFORMATION | Farm | | | Irrigated | | | Rain-fed | | |
|---------------------------------------|-----------|-----------|-----------|-----------|-----------|-----------|-----------|-----------|-----------|
| | Last Week | This Week | Variation | Last Week | This Week | Variation | Last Week | This Week | Variation |
| Grazed milking area (ha) | 103.0 | 108.6 | 5.6 | 37.2 | 37.2 | 0.0 | 71.5 | 71.5 | 0 |
| Rotation Length (days) | 48 | 44 | -4 | 24 | 26 | 2 | 96 | 69 | -27 |
| Grazing allocation per day (ha) | 2.2 | 2.5 | 0.3 | 1.4 | 1.4 | -0.0 | 0.7 | 1.0 | 0.3 |
| Average time since last grazed (days) | 42 | 41 | -0 | 39 | 38 | -1 | 43 | 43 | 0 |
| Leaf appearance rate (days per leaf) | 17 | 17 | 0 | 17 | 17 | 0 | 17 | 17 | 0 |
| Average Pasture Cover (kgDM/ha) | 2303 | 2227 | -77 | 2504 | 2334 | -169 | 2200 | 2171 | -29 |
| Pasture Growth Rate (kgDM/ha/day) | 32 | 15 | -17 | 37 | 26 | -11 | 30 | 10 | -20 |
| Post Grazing Biomass (kgDM/ha) | 1650 | 1550 | -100 | | | | | | |
| Nitrogen applied YTD (kgN/ha) | 90 | 90 | 0 | 0 | 0 | 0 | 0 | 0 | 0 |

*Please note all pasture calculations detailed above are based on the current Grazed Milking Area

| MILK PRODUCTION | Last Week | This Week | Variation |
|--------------------------------|-----------|-----------|-----------|
| Average No. cows in milk (vat) | 260 | 257 | -3 |
| Litres per cow | 9.8 | 9.0 | -0.8 |
| % Fat | 5.66 | 5.87 | 0.21 |
| % Protein | 4.40 | 4.31 | -0.09 |
| MS/cow/day | 0.97 | 0.92 | -0.05 |
| MS/ha/day | 2.24 | 2.10 | -0.14 |
| BMCC | 223,714 | 219,714 | -4,000 |
| Average Liveweight (kg) | 506 | 508 | 2 |
| | Budget | To Date | Variation |
| Total Milk Production (kgMS) | 134,900 | 120,672 | 89% |
| MS/ha YTD | 1183 | 1103 | -81 |



| Last 7 days | | | | | |
|----------------|-----------|--------------|--------------|---------------|----------|
| Milkers Diet | kg DM | MJ ME | CP (%) | NDF (%) | \$/cow |
| Pasture Intake | 11.0 | 12.0 | 19.0 | 48.0 | 0.0 |
| Concentrates | 4.7 | 12.9 | 15.6 | 20.3 | 0.0 |
| Silage | 2.3 | 10.0 | 0.0 | 0.0 | 0.0 |
| Grazed forage | 0.0 | 0.0 | 0.0 | 0.0 | 0.0 |
| Other feeds | 0.0 | 0.0 | 0.0 | 0.0 | 0.0 |
| Total | 18 | 215.7 | 15.7 | 34.7 | 0 |
| Target | | 191 | 16-18 | >33 | 0 |



| Analysis | | | |
|--|----|---------------------------|---------|
| Expected growth rate next 7 days (kgDM/ha/day) | 27 | Target Leaf Grazing Stage | 2.5-3.0 |
| Total Demand from Pasture (kgDM/ha/day) | 27 | Predicted APC 7 days time | 2224 |
| APC balance (kgDM/ha/day) | -0 | Predicted APC Change | -2.6 |

Discussion

Rain on every day in May so far (a total of 138 mm), while welcome after the long dry period over the past six months, has made the farm quite wet with paddocks now easily damaged at high stocking rates. To prevent serious damage to soils and pasture recovery time, cows are being moved twice a day. As day length shortens and temperatures fall, pasture growth rates are slowing and paddocks are not recovering from grazing as quickly. To ease some of the pressure on the milking area, all the empty cows (15) will be sold in the coming week and any cows producing below 6 litres will be dried off. The remainder of the herd will be milked into early June and then dried off to give a minimum of 6 weeks dry period to be ready for calving, which will commence in the last week of July (heifers will start calving one week earlier).

16 May 2016

