

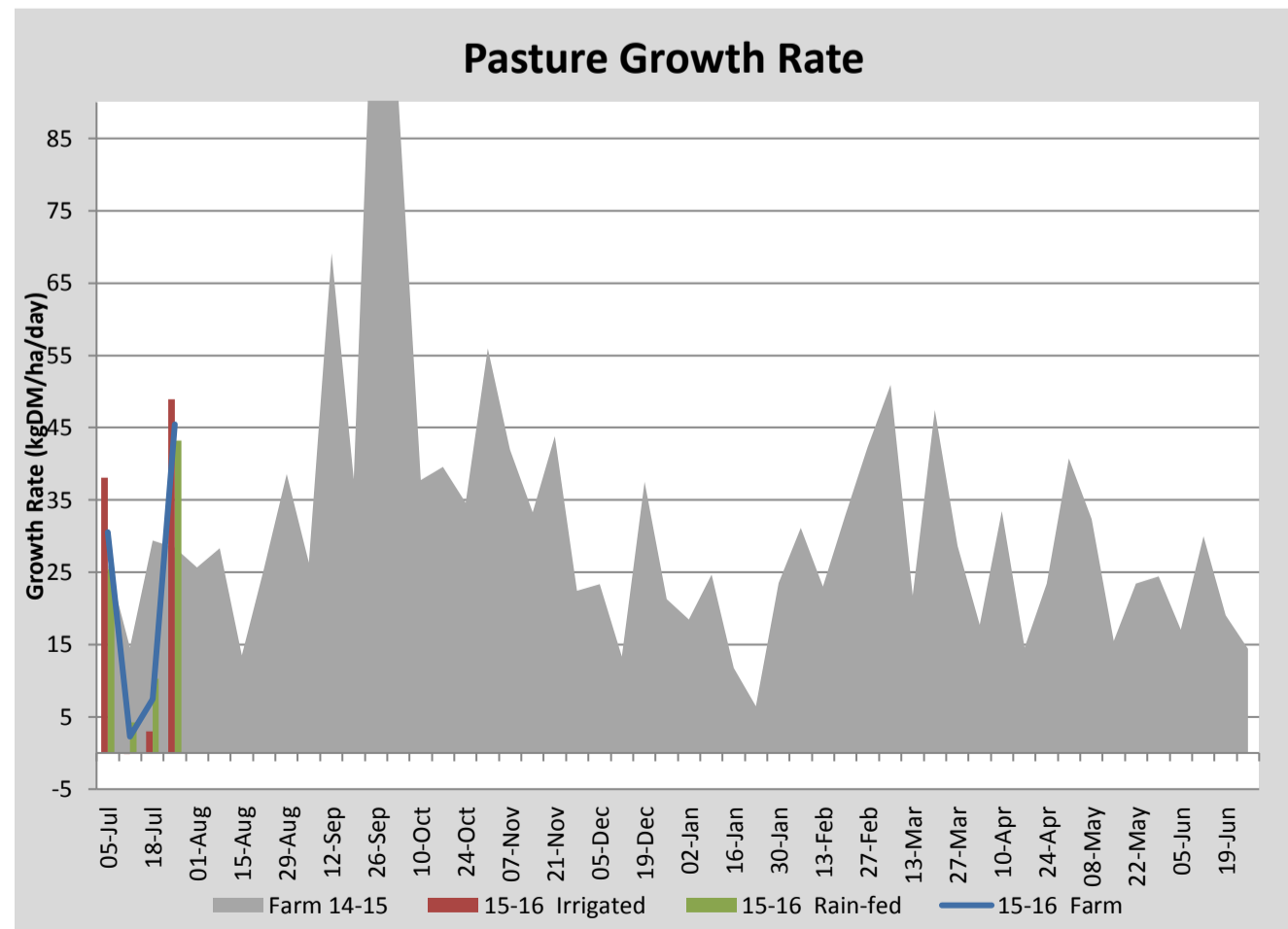
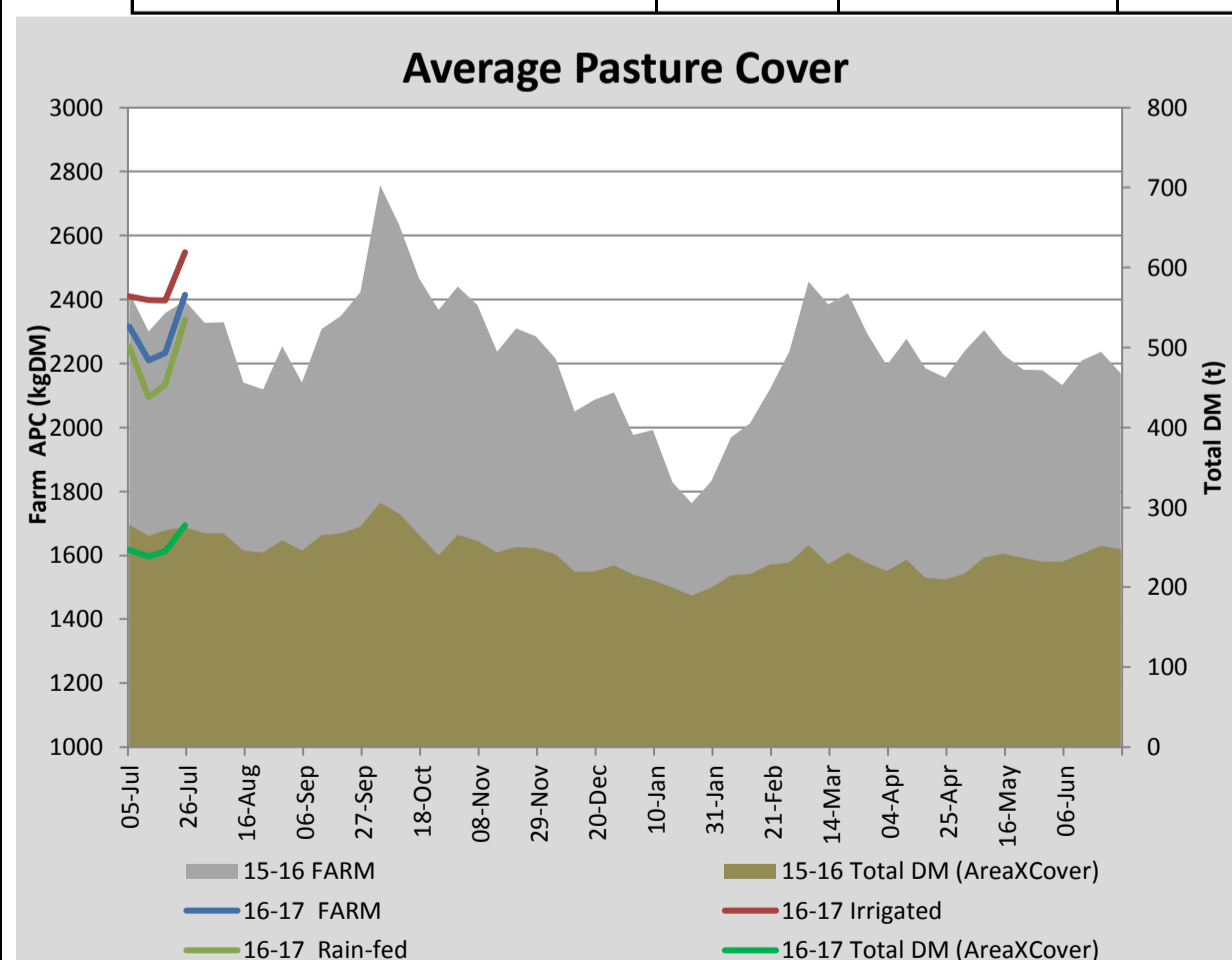
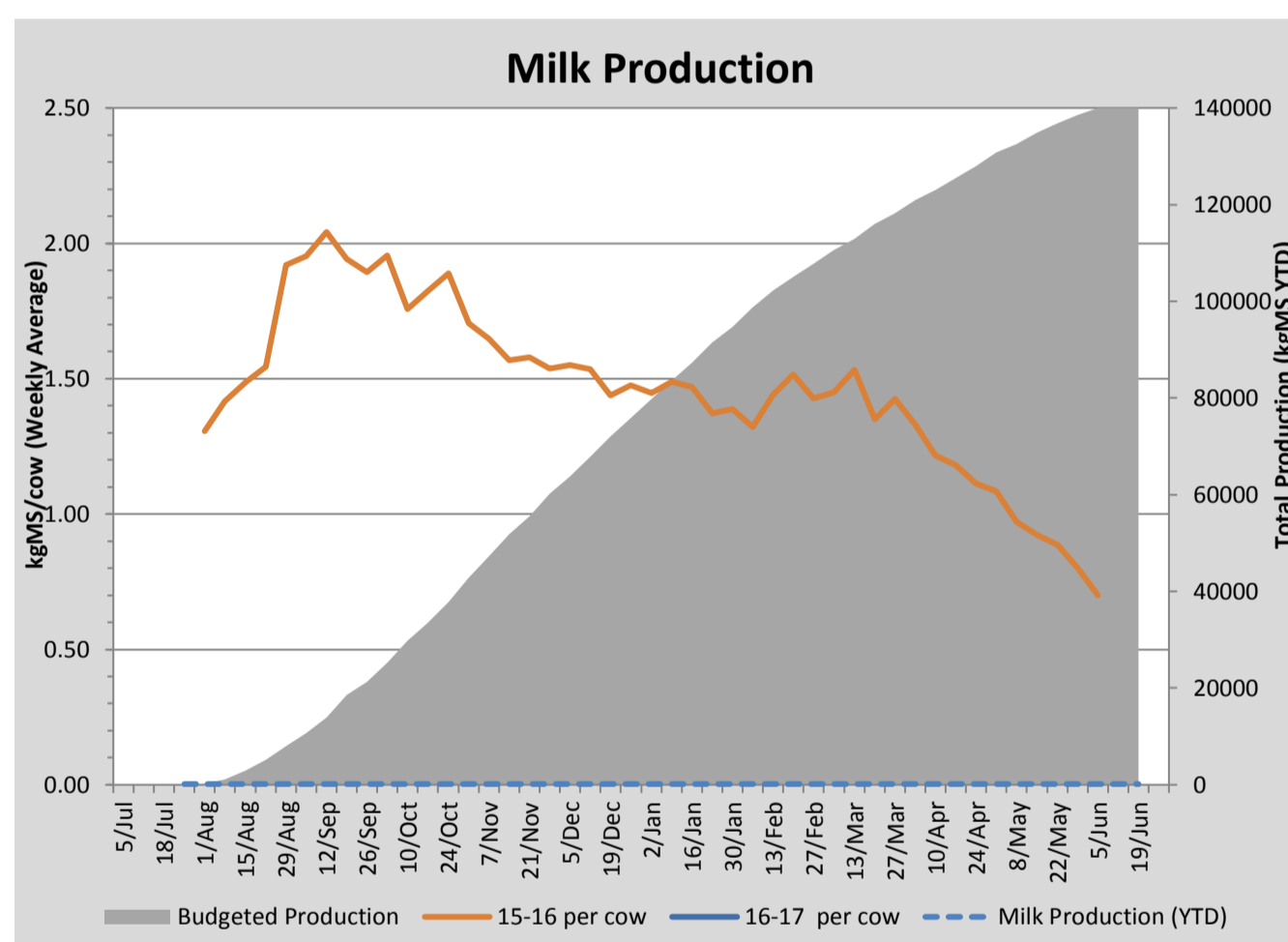
Key Summary Points

- 1 Pasture growth rates are good for this time of year but can be difficult to accurately read when paddocks are so wet so may not be as high as shown
- 2 Very wet conditions continuing throughout the month has meant breaking the herd into smaller more manageable groups that cause less pasture/paddock damage
- 3 About a 1/3 of the herd (120 cows) have calved so far without any major difficulties.

PASTURE INFORMATION	Farm			Irrigated			Rain-fed		
	Last Week	This Week	Variation	Last Week	This Week	Variation	Last Week	This Week	Variation
Grazed milking area (ha)	109.8	115.0	5.1	42.2	42.2	0.0	72.8	72.8	0
Rotation Length (days)	83	67	-16	44	44	1	176	95	-82
Grazing allocation per day (ha)	1.3	1.7	0.4	0.9	1.0	0.0	0.4	0.8	0.4
Average time since last grazed (days)	55	77	22	63	76	13	50	78	28
Leaf appearance rate (days per leaf)	20	20	0	20	20	0	20	20	0
Average Pasture Cover (kgDM/ha)	2232	2415	183	2397	2548	151	2134	2338	204
Pasture Growth Rate (kgDM/ha/day)	7	45	38	3	49	46	10	43	33
Post Grazing Biomass (kgDM/ha)	1400	1400	0						
Nitrogen applied YTD (kgN/ha)	0	0	0	0	0	0	0	0	0

*Please note all pasture calculations detailed above are based on the current Grazed Milking Area

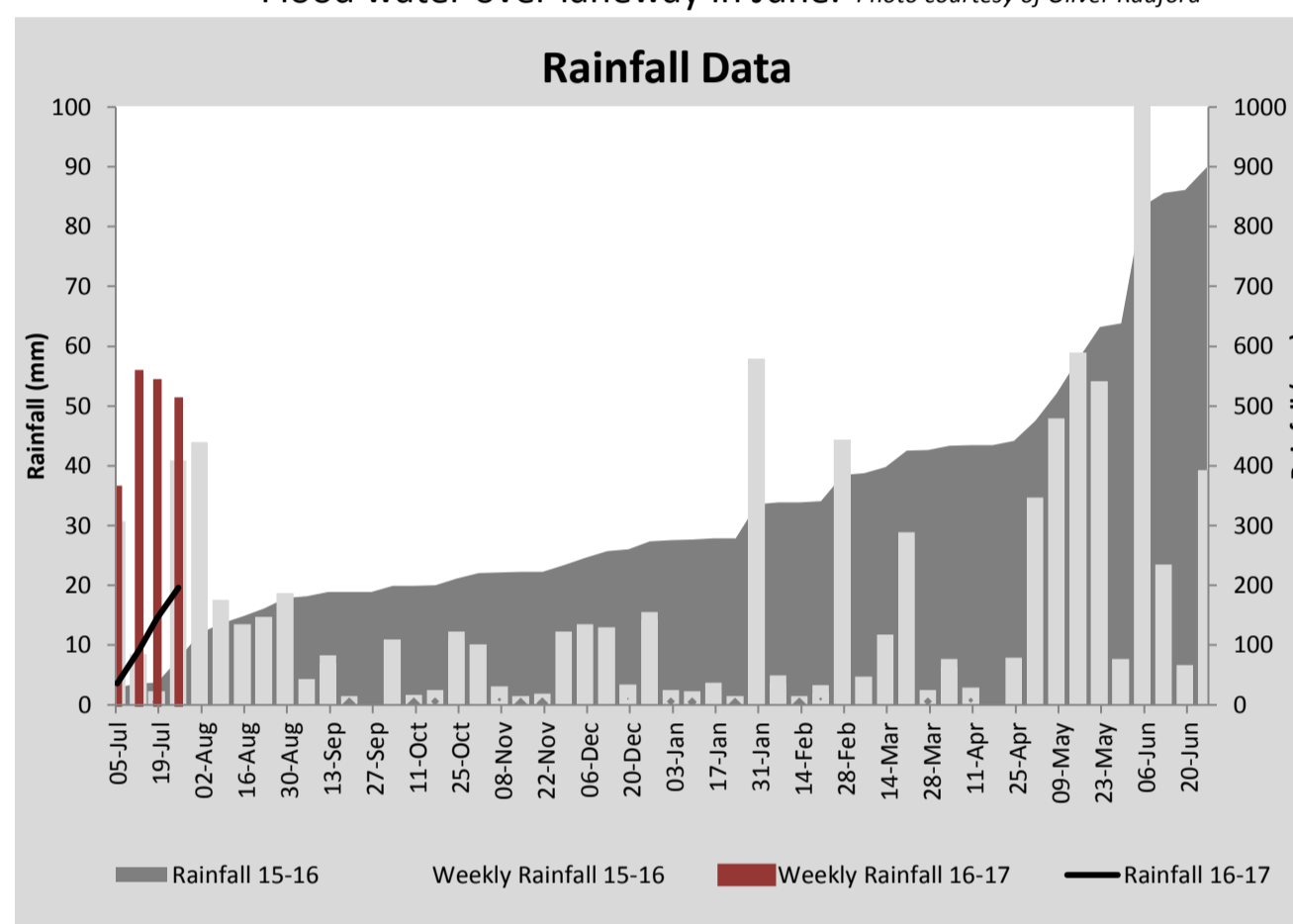
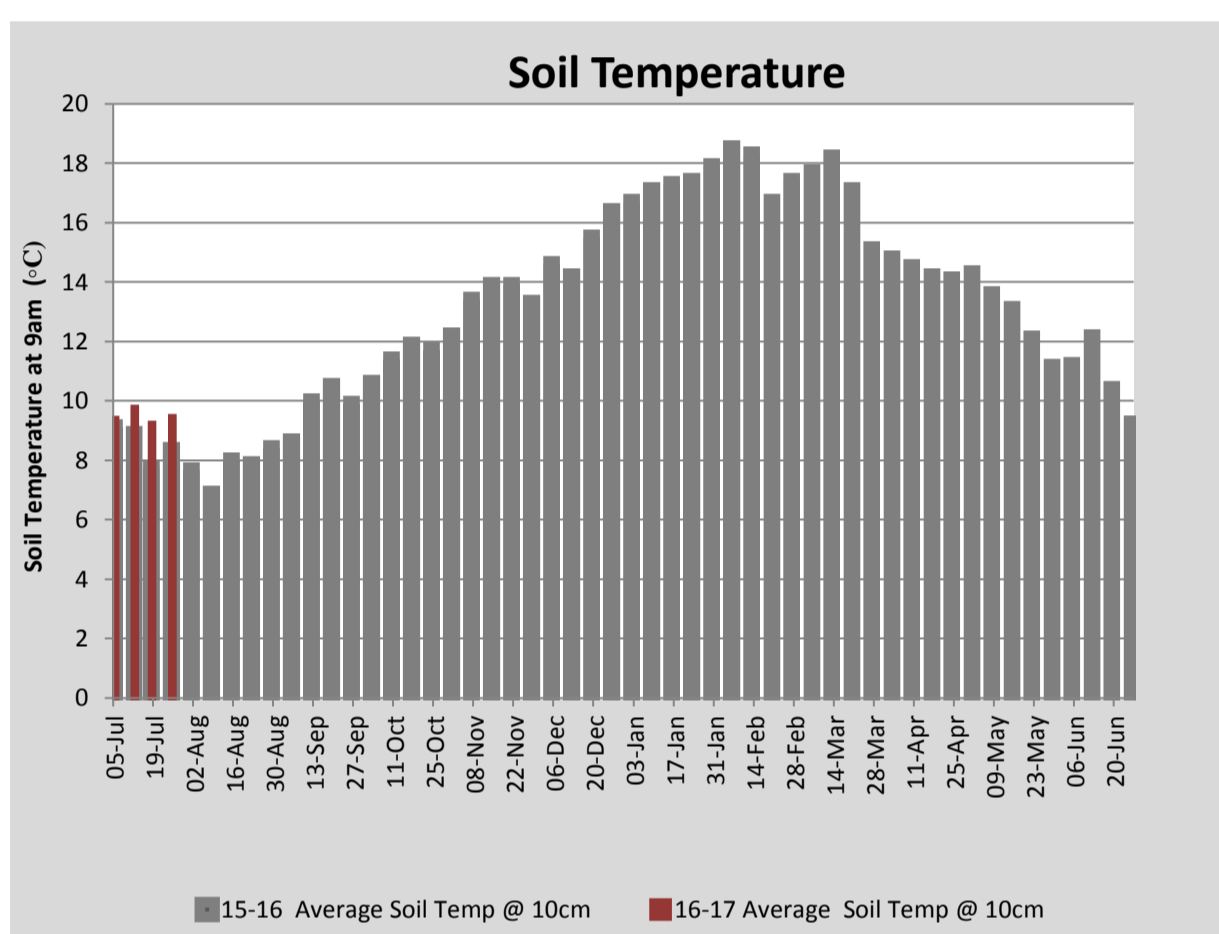
MILK PRODUCTION	Last Week	This Week	Variation
Average No. cows in milk (vat)	0	60	60
Litres per cow	#N/A	13.2	#N/A
% Fat	#N/A	4.91	#N/A
% Protein	#N/A	3.96	#N/A
MS/cow/day	#N/A	1.17	#N/A
MS/ha/day	#N/A	0.62	#N/A
BMCC	#N/A		#VALUE!
Average Liveweight (kg)	0	0	0
	Budget	To Date	Variation
Total Milk Production (kgMS)	0	135	#DIV/0!
MS/ha YTD	0		



Last 7 days					
Milkers Diet	kg DM	MJ ME	CP (%)	NDF (%)	\$/cow
Pasture Intake	14.0	12.5	18.0	43.0	0.0
Concentrates	3.0	12.9	15.6	20.3	0.0
Silage	0.0	0.0	0.0	0.0	0.0
Grazed forage	0.0	0.0	0.0	0.0	0.0
Other feeds	0.0	0.0	0.0	0.0	0.0
Total	17	213.7	17.6	39.0	0
Target		90	16-18	>33	0



Flood water over laneway in June. Photo courtesy of Oliver Radford



Analysis			
Expected growth rate next 7 days (kgDM/ha/day)	15	Target Leaf Grazing Stage	2.5-3.0
Total Demand from Pasture (kgDM/ha/day)	12	Predicted APC 7 days time	2434
APC balance (kgDM/ha/day)	3	Predicted APC Change	18.9

Discussion

Very wet conditions have made the beginning of calving reasonably difficult. Currently almost a 1/3 (120 cows) of the herd has calved and while conditions have been difficult with wet paddocks the actual calving has progressed smoothly. Growth rates have been very variable with some paddocks growing at very high rates and others barely moving, depending on how waterlogged they have been. It has been too wet to apply nitrogen. The main focus over the past few weeks has been to properly feed the various herds: milkers, colostrums, springers, lead feed and sickies without causing too much paddock damage from pugging. To minimise pugging, some sacrifice paddocks have been used. These paddocks will be resown in spring. The lead feed herd is being fed 2 kg of lead feed pellets, straw and pasture dusted with causemag for 14 days prior to calving. An accelerated calf rearing trial, funded by DairyTas, has just begun. There will be more details about this over the coming weeks.

25 July 2016

