

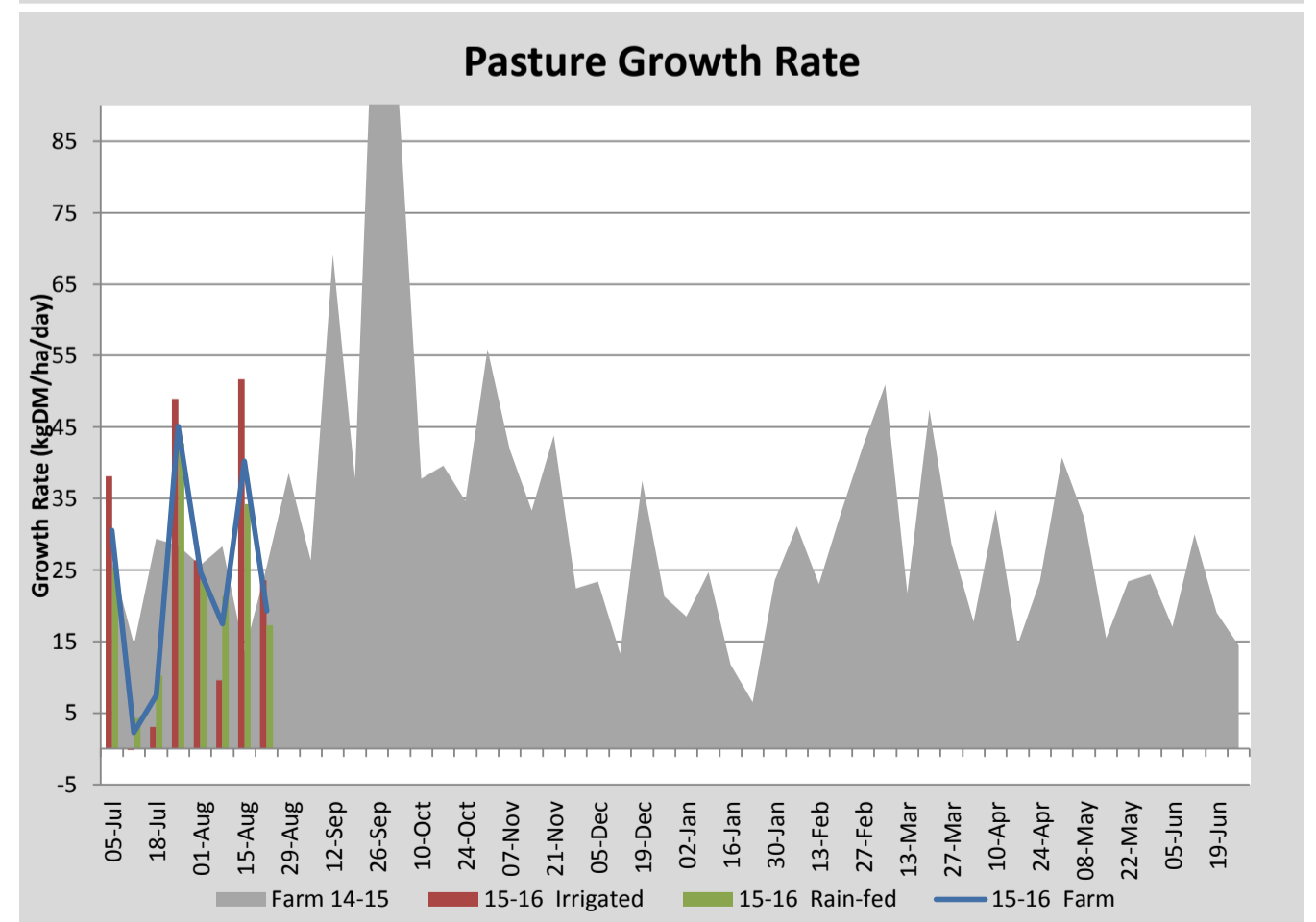
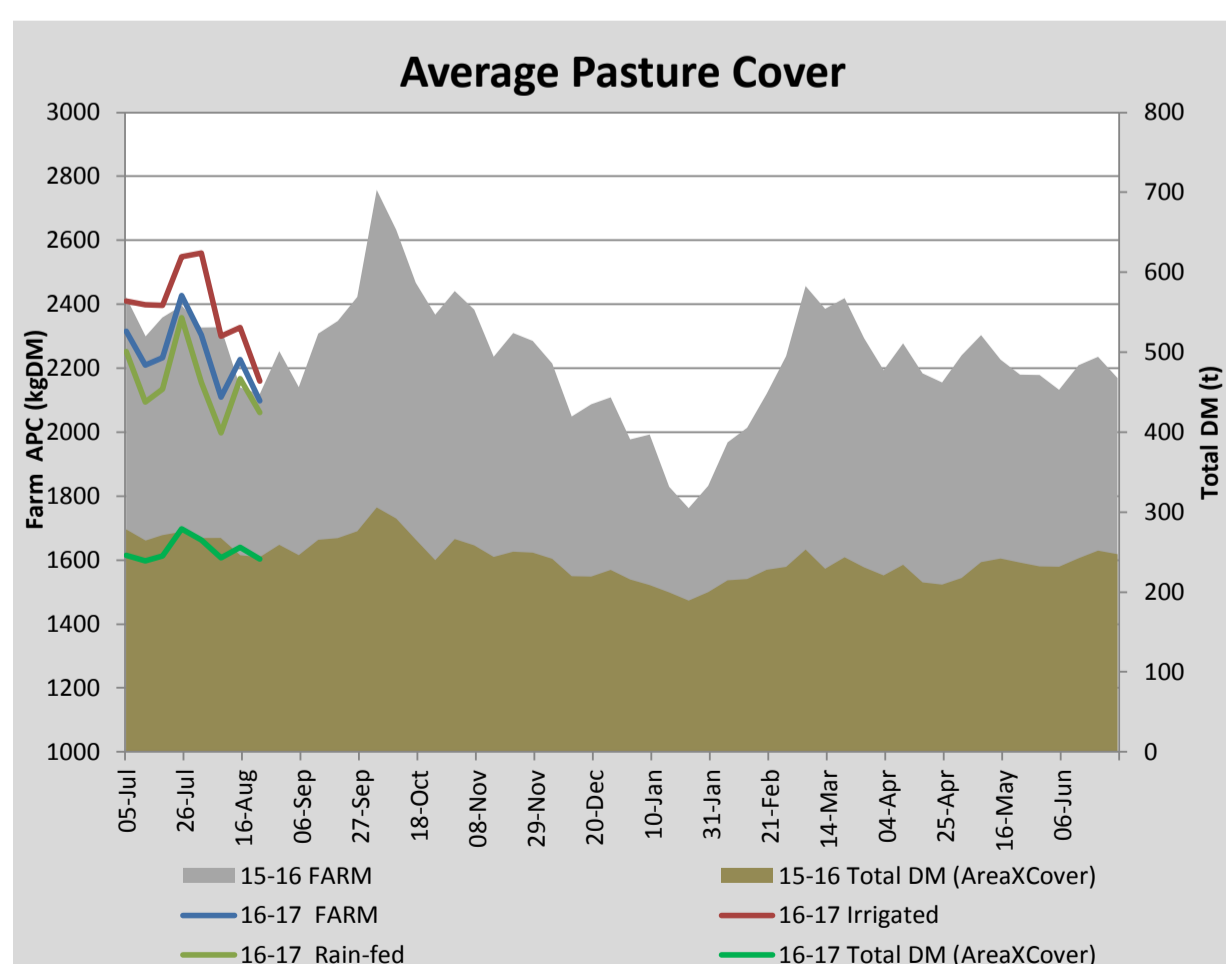
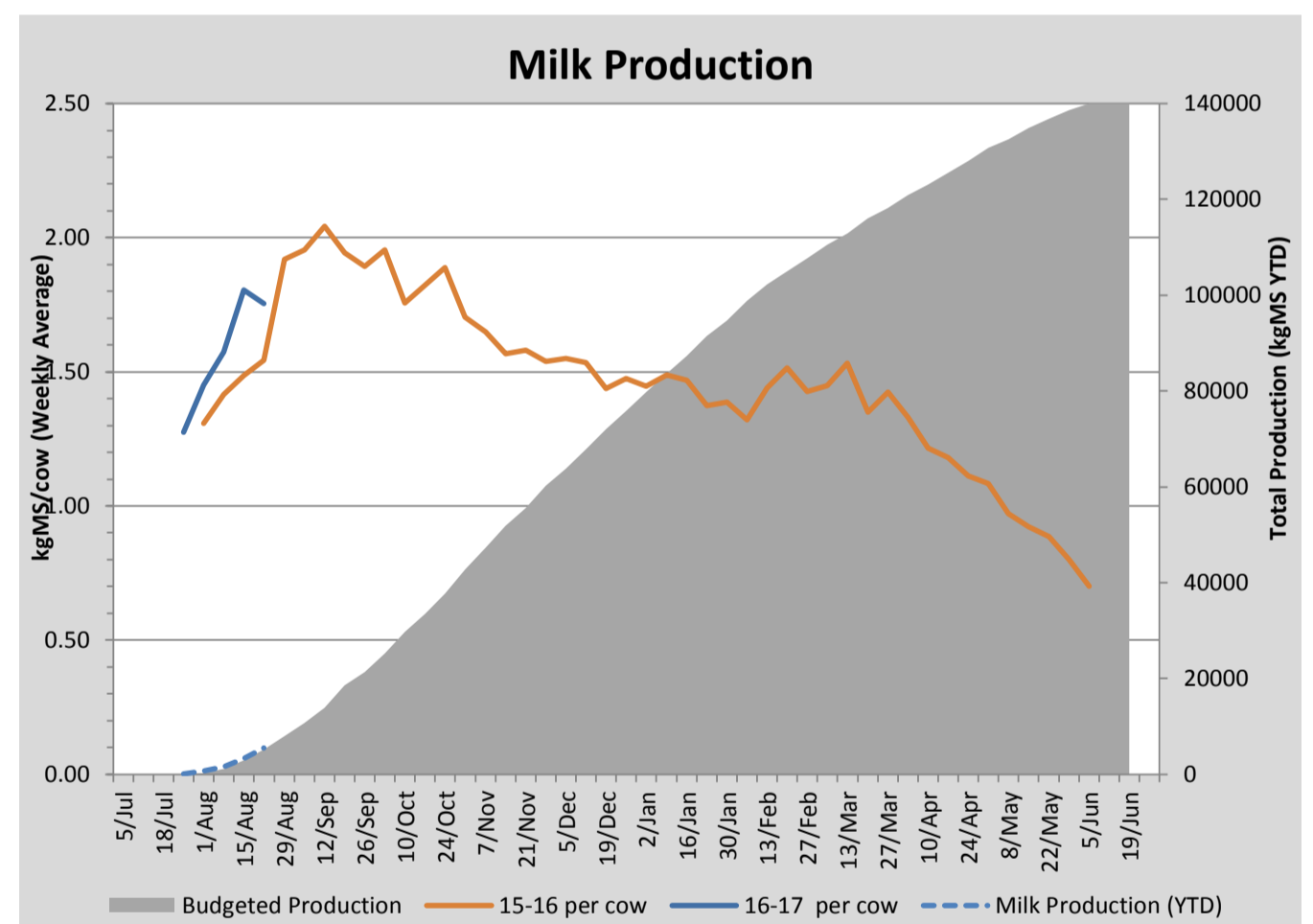
Key Summary Points

- 1** Average pasture cover dropped this week to 2098kgDM/ha with demand increasing on the platform and lower than expected growth rates.
- 2** Per cow milk solid production decreased slightly this week most likely due to a slight under allocation of pasture.
- 3** The focus for the coming week is to apply nitrogen at 40kg/ha to all grazed paddocks and to hold or extend the grazing rotation.

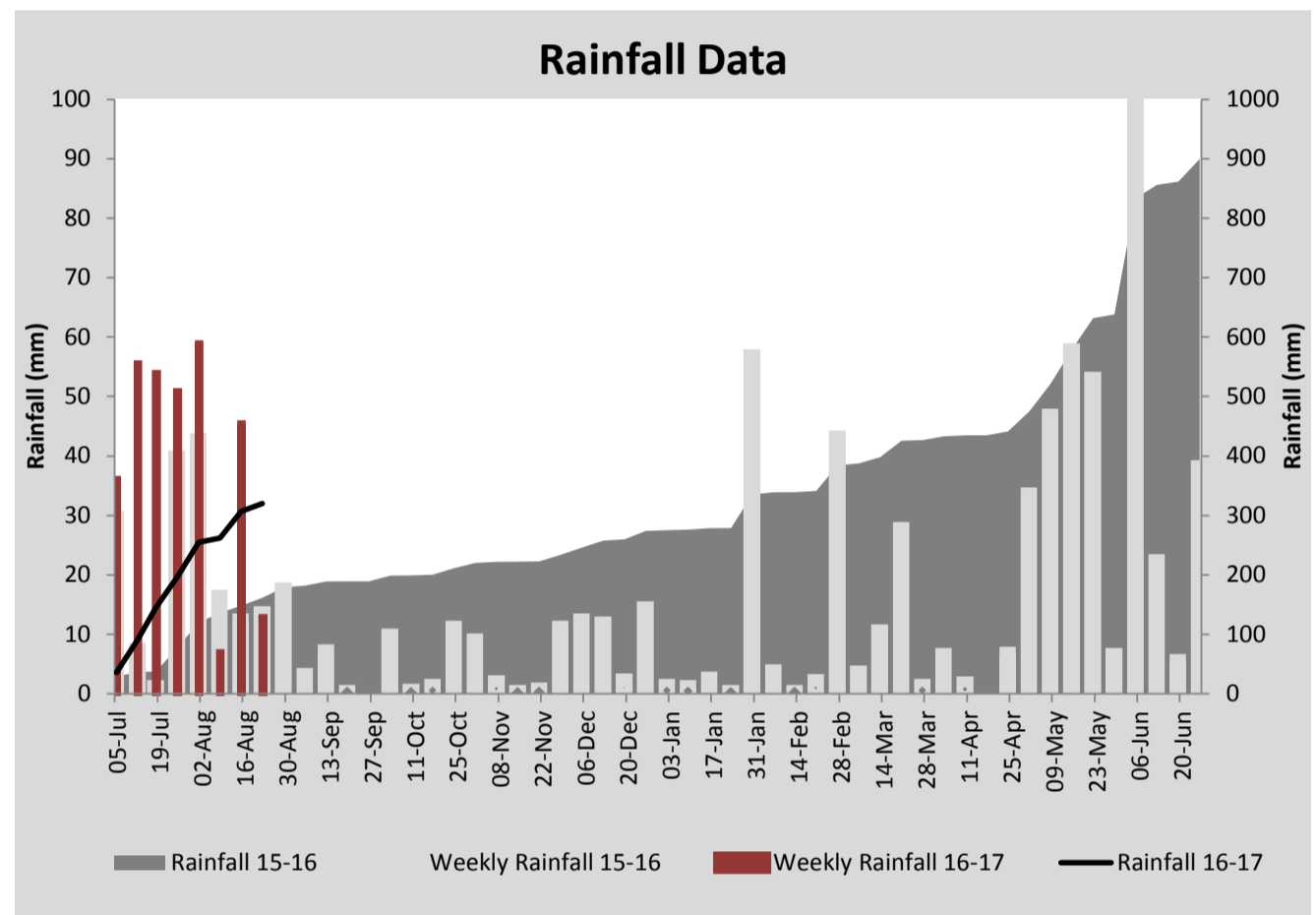
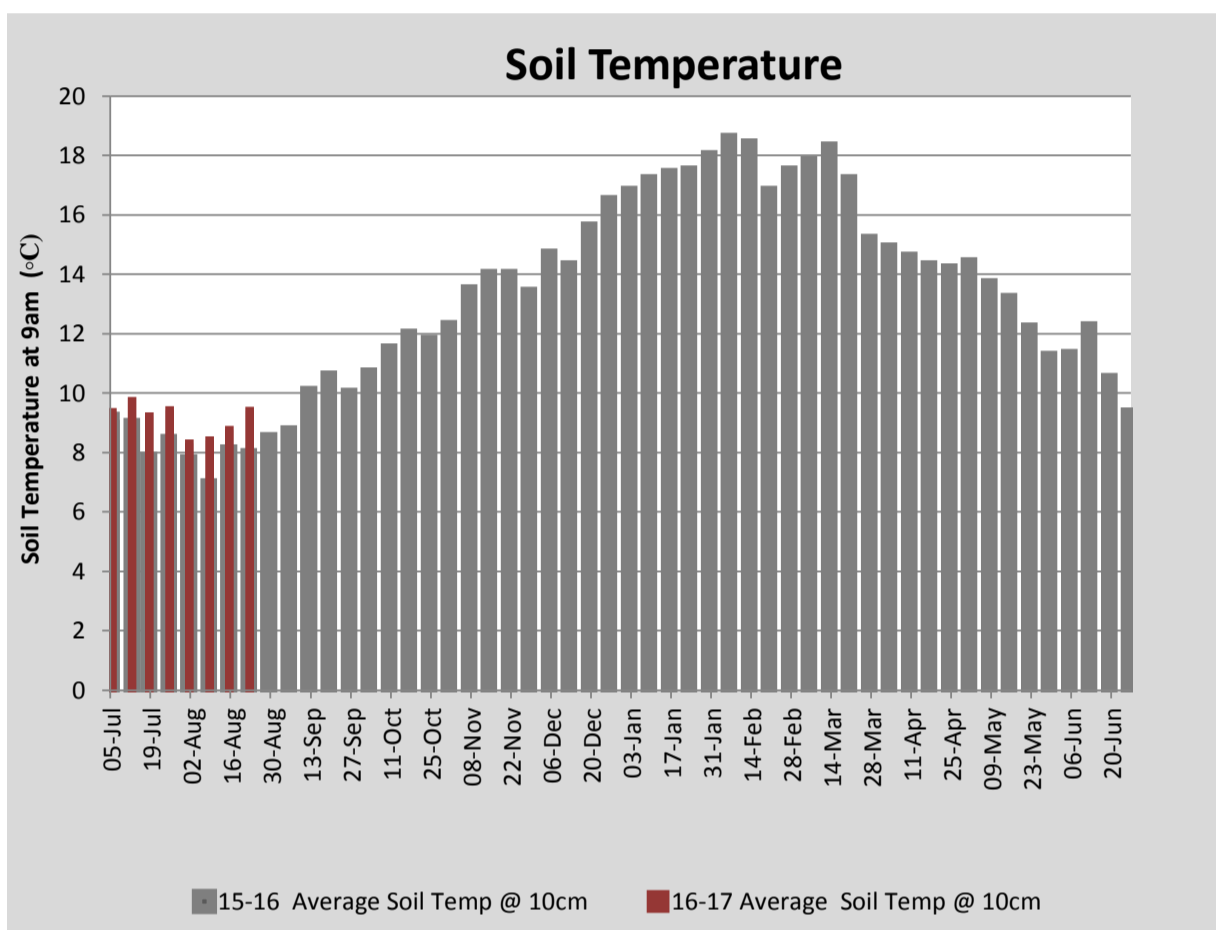
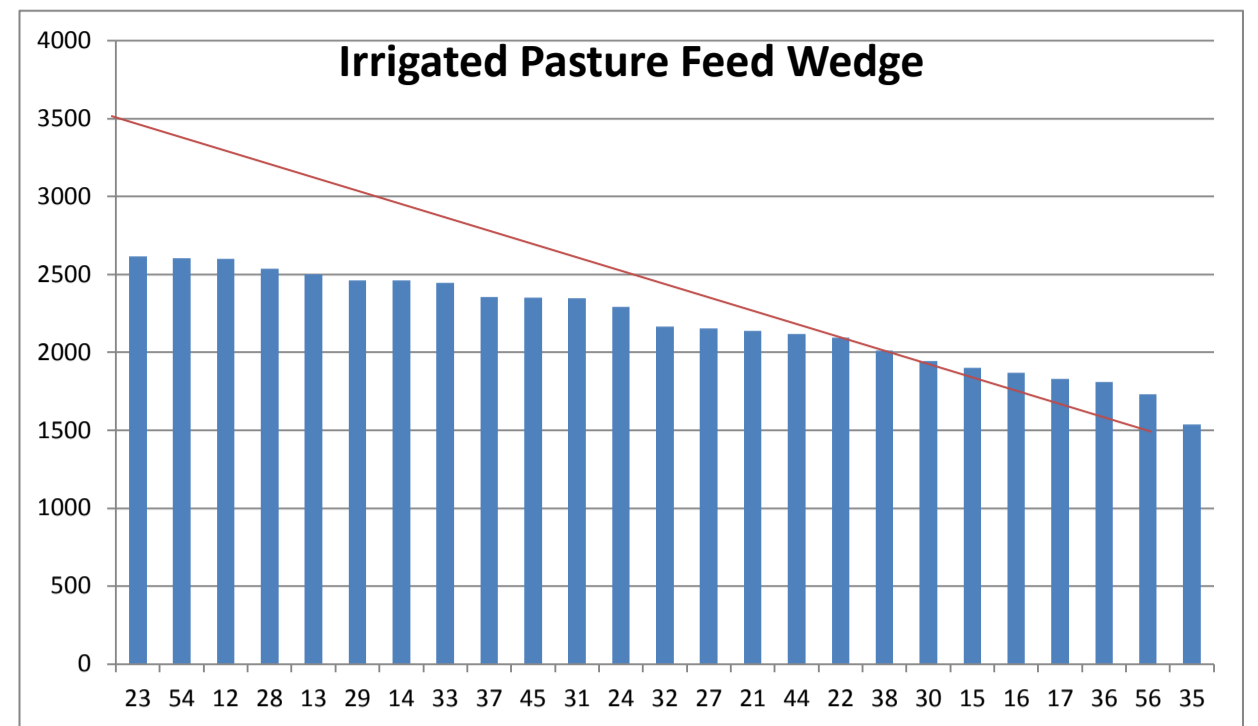
PASTURE INFORMATION	Farm			Irrigated			Rain-fed		
	Last Week	This Week	Variation	Last Week	This Week	Variation	Last Week	This Week	Variation
Grazed milking area (ha)	115.0	115.0	0.0	42.2	42.2	0.0	72.8	72.8	0
Rotation Length (days)	59	52	-6	31	43	12	121	60	-62
Grazing allocation per day (ha)	2.0	2.2	0.2	1.4	1.0	-0.4	0.6	1.2	0.6
Average time since last grazed (days)	89	86	-3	72	83	11	99	88	-11
Leaf appearance rate (days per leaf)	20	20	0	20	20	0	20	20	0
Average Pasture Cover (kgDM/ha)	2226	2098	-128	2328	2160	-167	2168	2062	-106
Pasture Growth Rate (kgDM/ha/day)	40	19	-21	52	24	-28	34	17	-17
Post Grazing Biomass (kgDM/ha)	1520	1450	-70						
Nitrogen applied YTD (kgN/ha)	21	21	0	0	0	0	0	0	0

*Please note all pasture calculations detailed above are based on the current Grazed Milking Area

MILK PRODUCTION	Last Week	This Week	Variation
Average No. cows in milk (vat)	160	215	55
Litres per cow	22.8	22.8	-0.0
% Fat	4.52	4.41	-0.11
% Protein	3.31	3.25	-0.06
MS/cow/day	1.81	1.75	-0.05
MS/ha/day	2.56	3.34	0.78
BMCC	247,714	179,714	-68,000
Average Liveweight (kg)	0	0	0
	Budget	To Date	Variation
Total Milk Production (kgMS)	5,211	5,455	105%
MS/ha YTD	46	59	130%



Last 7 days					
Milkers Diet	kg DM	MJ ME	CP (%)	NDF (%)	\$/cow
Pasture Intake	11.2	12.5	18.0	44.0	0.0
Concentrates	5.0	12.9	45.6	20.3	0.0
Silage	0.8	0.0	0.0	0.0	0.0
Grazed forage	0.0	0.0	0.0	0.0	0.0
Other feeds	0.0	0.0	0.0	0.0	0.0
Total	17	204.6	25.3	35.0	0
Target			16-18	>33	0



Analysis			
Expected growth rate next 7 days (kgDM/ha/day)	25	Target Leaf Grazing Stage	2.5-3.0
Total Demand from Pasture (kgDM/ha/day)	27	Predicted APC 7 days time	2086
APC balance (kgDM/ha/day)	-2	Predicted APC Change	-12.2

Discussion

Average pasture cover decreased this week to 2093kgDM/ha this week with increasing demand and lower than expected growth rates. With a pasture deficit continuing to develop we will be increasing the grain feeding rate to 6kg/cow/day (as fed) and will hold the rotation on the milking platform at 60 days or greater. If cover continues to decline in the coming week we will consider grazing some of the run-off paddocks with the milkers and offering PKE at 1kgDM/cow/day on the return laneway.

22 August 2016

