

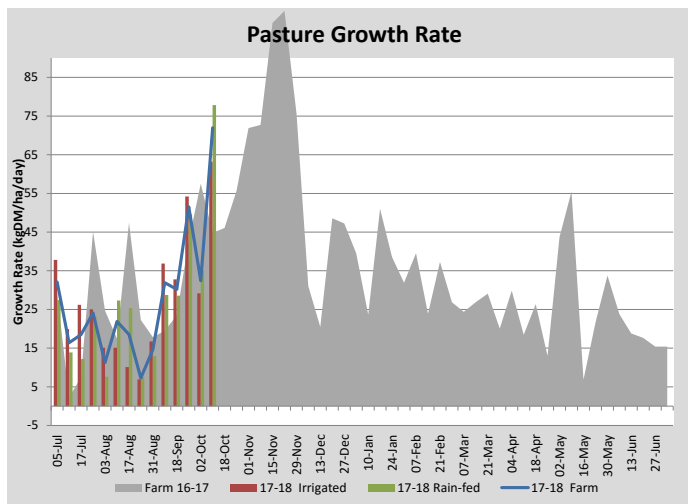
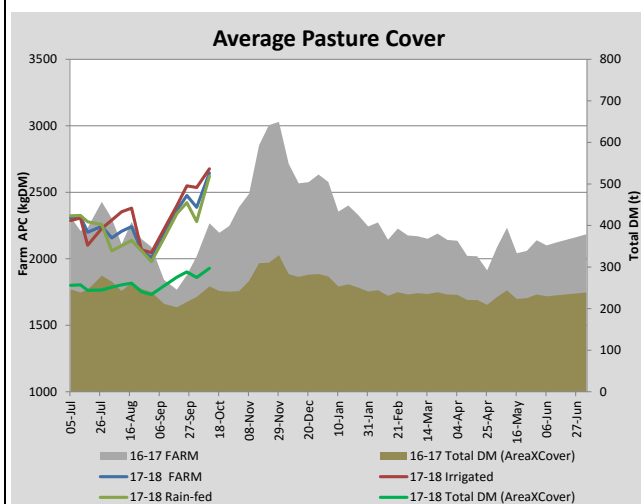
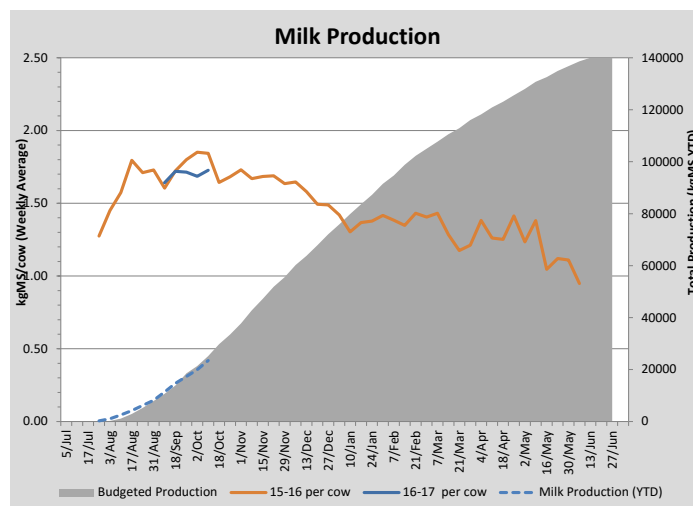
Key Summary Points

| | |
|---|--|
| 1 | |
| 2 | |
| 3 | |

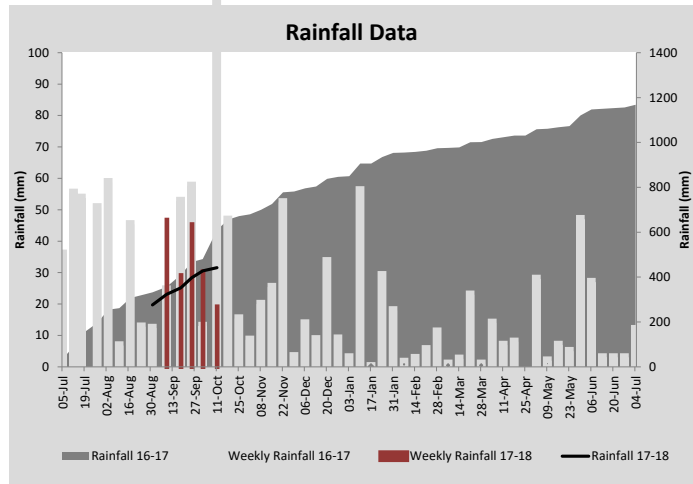
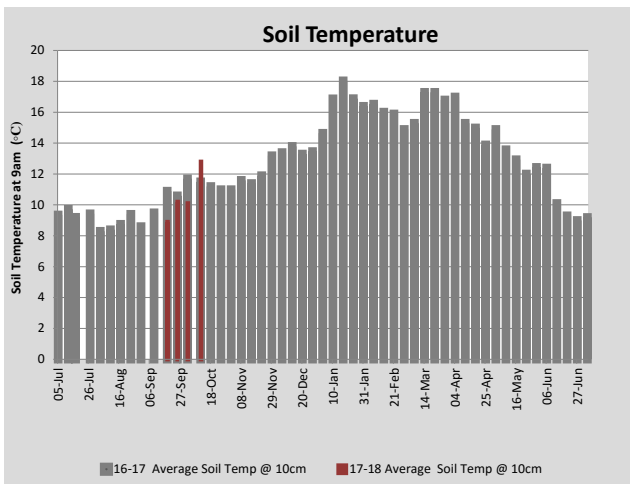
| PASTURE INFORMATION | Farm | | | Irrigated | | | Rain-fed | | |
|---------------------------------------|-----------|-----------|-----------|-----------|-----------|-----------|-----------|-----------|-----------|
| | Last Week | This Week | Variation | Last Week | This Week | Variation | Last Week | This Week | Variation |
| Grazed milking area (ha) | 116.6 | 115.2 | -1.4 | 40.5 | 48.1 | 7.6 | 74.7 | 67.1 | -8 |
| Rotation Length (days) | 43 | 36 | -7 | 49 | 36 | -13 | 39 | 36 | -4 |
| Grazing allocation per day (ha) | 2.7 | 3.2 | 0.5 | 1.0 | 1.3 | 0.3 | 1.7 | 1.9 | 0.2 |
| Average time since last grazed (days) | 55 | 54 | -1 | 50 | 52 | 2 | 58 | 55 | -3 |
| Leaf appearance rate (days per leaf) | 14 | 14 | 0 | 14 | 14 | 0 | 14 | 14 | 0 |
| Average Pasture Cover (kgDM/ha) | 2476 | 2387 | -89 | 2549 | 2536 | -13 | 2422 | 2279 | -143 |
| Pasture Growth Rate (kgDM/ha/day) | 52 | 32 | -19 | 54 | 29 | -25 | 50 | 35 | -15 |
| Post Grazing Biomass (kgDM/ha) | 1519 | 1515 | -4 | | | | | | |
| Nitrogen applied YTD (kgN/ha) | 8 | 8 | 0 | 0 | 0 | 0 | 0 | 0 | 0 |

*Please note all pasture calculations detailed above are based on the current Grazed Milking Area

| MILK PRODUCTION | Last Week | This Week | Variation |
|--------------------------------|-----------|-----------|-----------|
| Average No. cows in milk (vat) | 290 | 290 | 0 |
| Litres per cow | 22.5 | 22.0 | -0.4 |
| % Fat | 4.44 | 4.38 | -0.06 |
| % Protein | 3.26 | 3.23 | -0.03 |
| MS/cow/day | 1.71 | 1.68 | -0.03 |
| MS/ha/day | 4.40 | 4.32 | -0.08 |
| BMCC | 253,000 | 200,429 | -52,571 |
| Average Liveweight (kg) | 0 | 0 | 0 |
| | Budget | To Date | Variation |
| Total Milk Production (kgMS) | 21,334 | 19,924 | 93% |
| MS/ha YTD | 187 | 197 | 105% |



| Last 7 days | | | | | |
|----------------|-----------|-------|--------------|---------------|----------|
| Milkers Diet | kg DM | MJ ME | CP (%) | NDF (%) | \$/cow |
| Pasture Intake | 15.0 | 0.0 | 0.0 | 0.0 | 0.0 |
| Concentrates | 4.0 | 0.0 | 0.0 | 0.0 | 0.0 |
| Silage | 0.0 | 0.0 | 0.0 | 0.0 | 0.0 |
| Grazed forage | 0.0 | 0.0 | 0.0 | 0.0 | 0.0 |
| Other feeds | 0.0 | 0.0 | 0.0 | 0.0 | 0.0 |
| Total | 19 | | | | 0 |
| Target | | | 16-18 | >33 | 0 |



| Analysis | | | |
|--|----|---------------------------|---------|
| Expected growth rate next 7 days (kgDM/ha/day) | 50 | Target Leaf Grazing Stage | 2.5-3.0 |
| Total Demand from Pasture (kgDM/ha/day) | 32 | Predicted APC 7 days time | 2510 |
| APC balance (kgDM/ha/day) | 18 | Predicted APC Change | 123.7 |

Discussion

2 October 2017

