

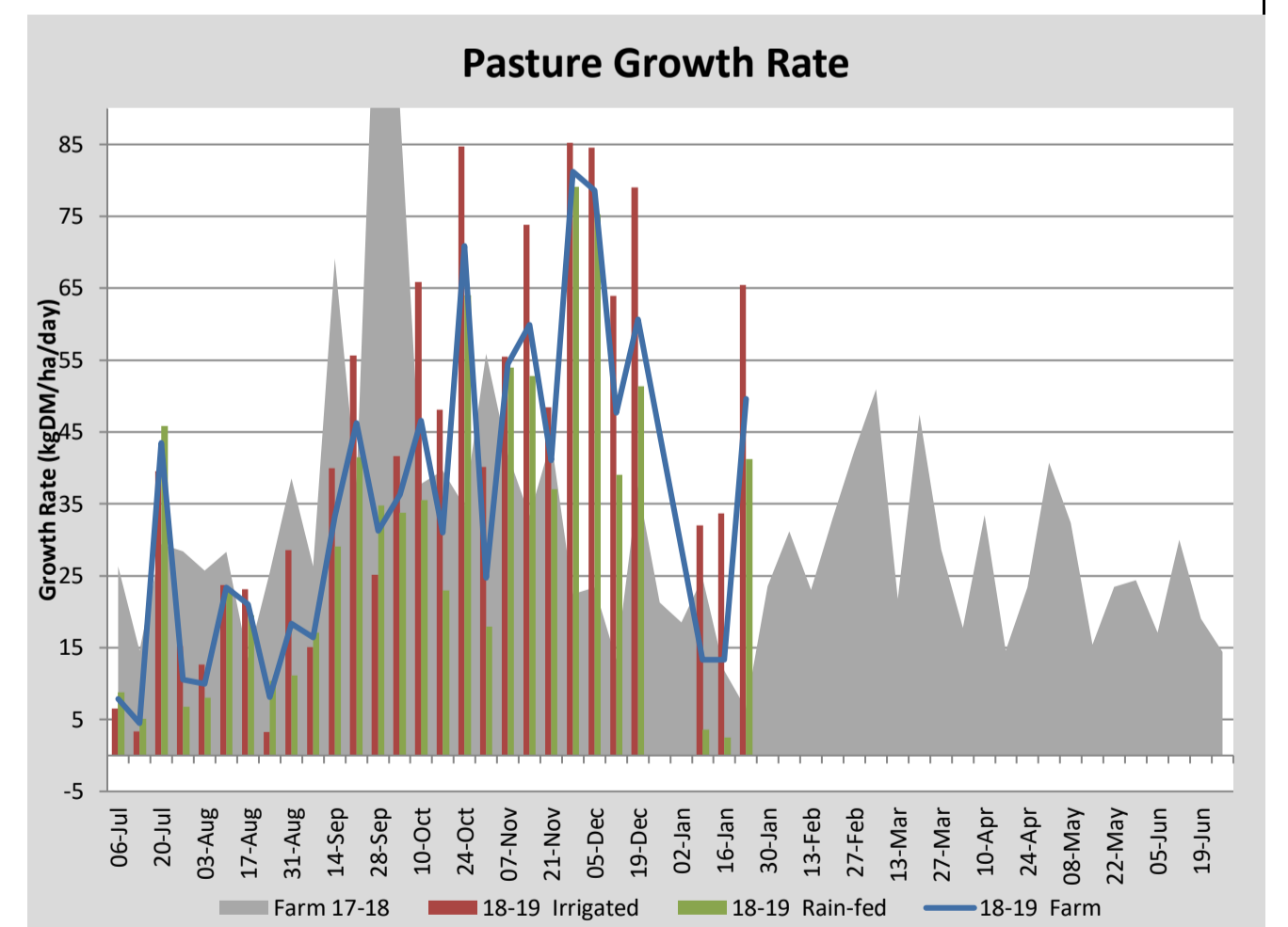
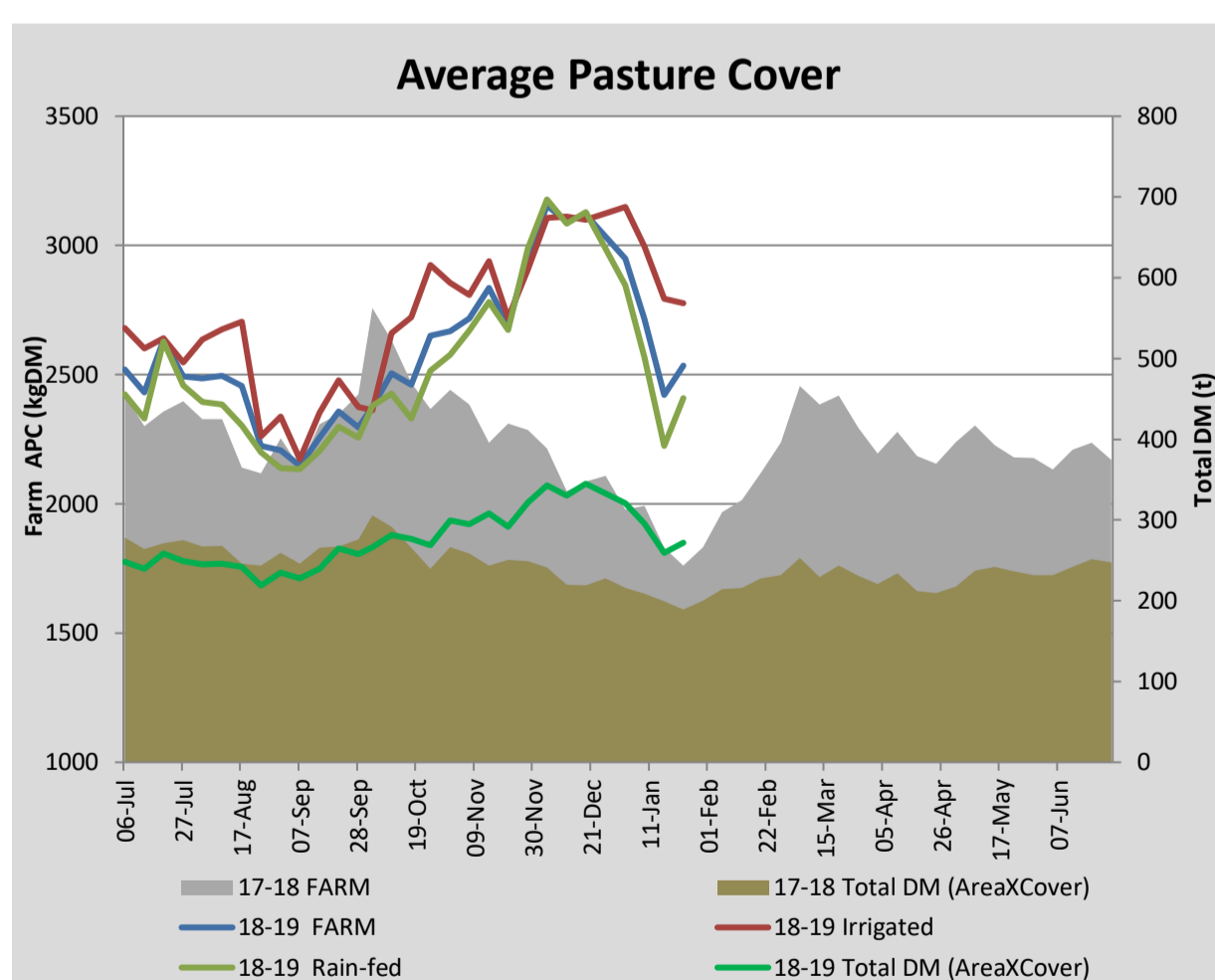
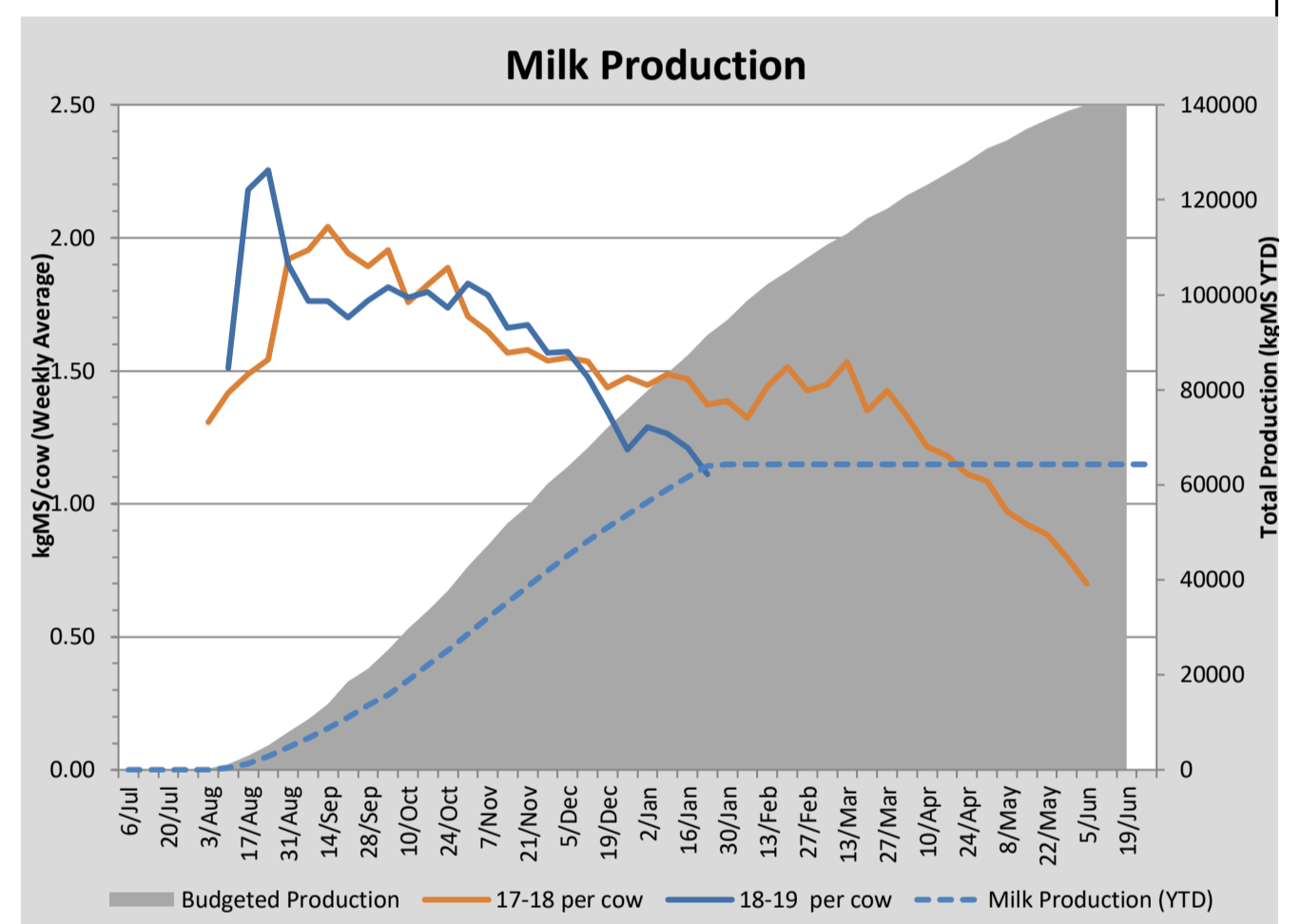
## Key Summary Points

- 1 The first pregnancy test has been conducted.
- 2 Grazing of the turnip crop is about to begin.
- 3 Winter crop has been sown.

PASTURE INFORMATION	Farm			Irrigated			Rain-fed		
	Last Week	This Week	Variation	Last Week	This Week	Variation	Last Week	This Week	Variation
Grazed milking area (ha)	107.1	107.1	0.0	37.2	37.2	0.0	70.0	70.0	0.0
Leaf appearance rate (days per leaf)	#N/A	18	#N/A	#N/A	9	#N/A	#N/A	23	#N/A
Average Pasture Cover (kgDM/ha)	2422	2536	114	2793	2776	-18	2224	2409	184
Pasture Growth Rate (kgDM/ha/day)	13	50	36	34	65	32	2	41	39
Post Grazing Biomass (kgDM/ha)	1449	1750	301						
Nitrogen applied YTD (kgN/ha)	60	64	4	9	9	1	2	1	-1

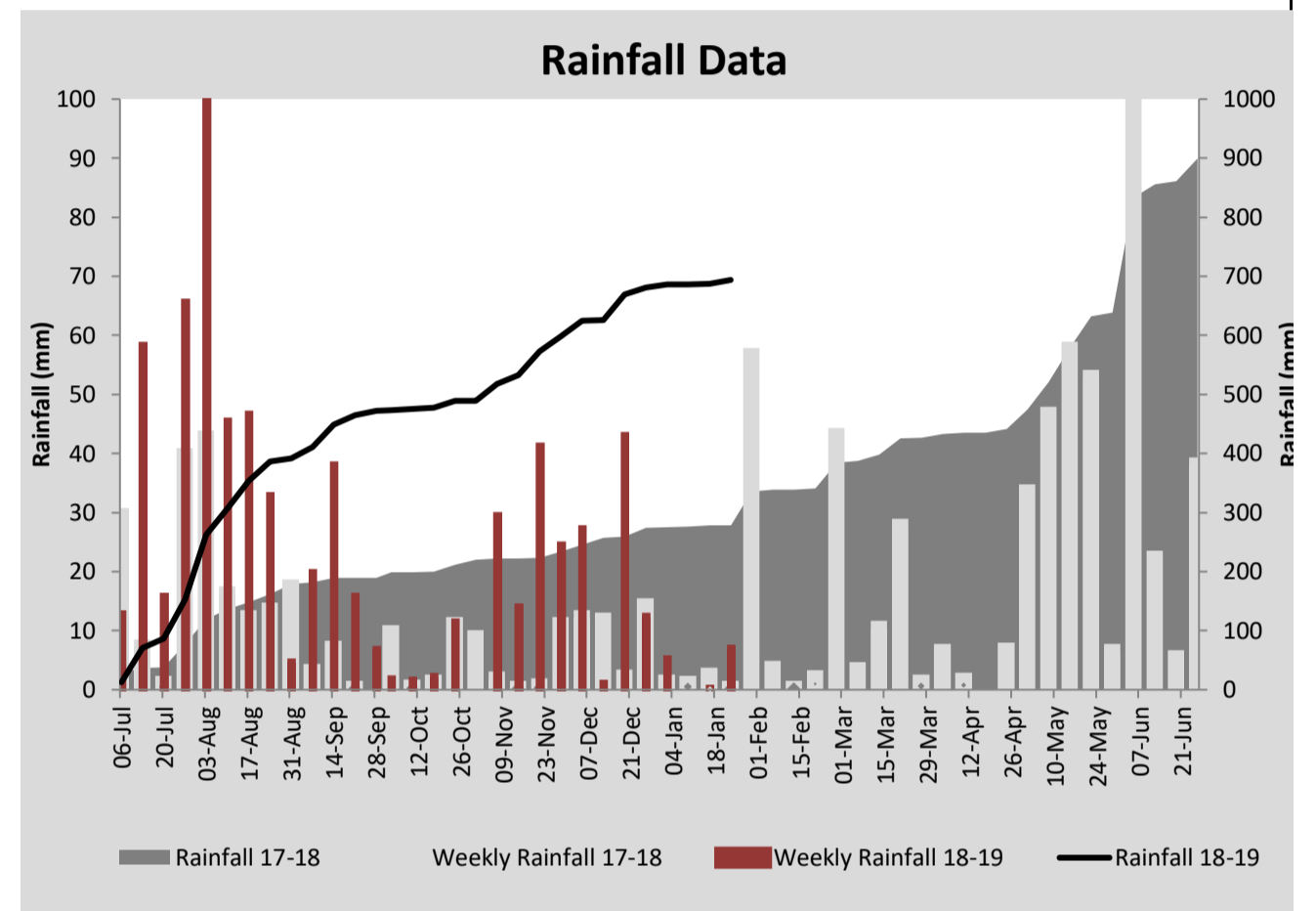
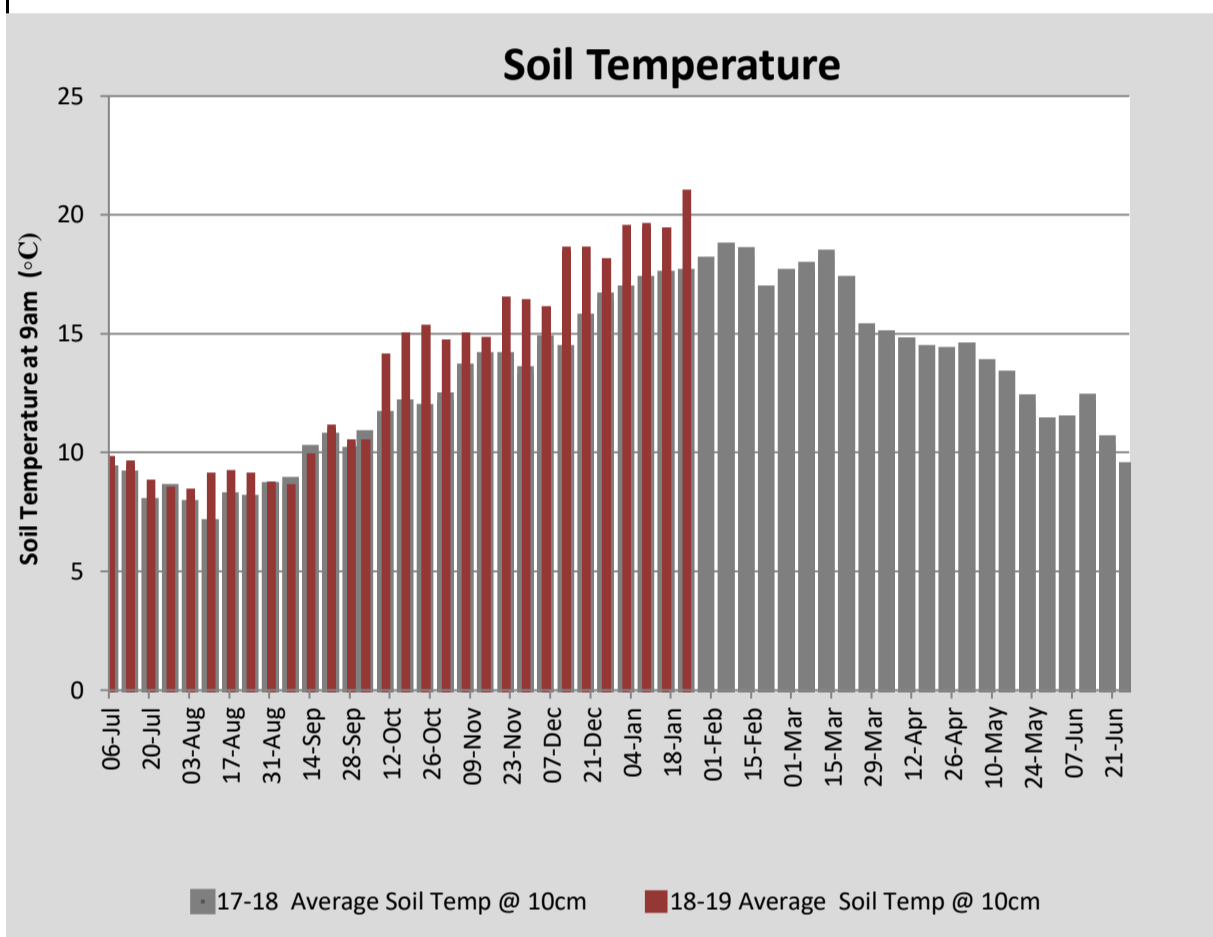
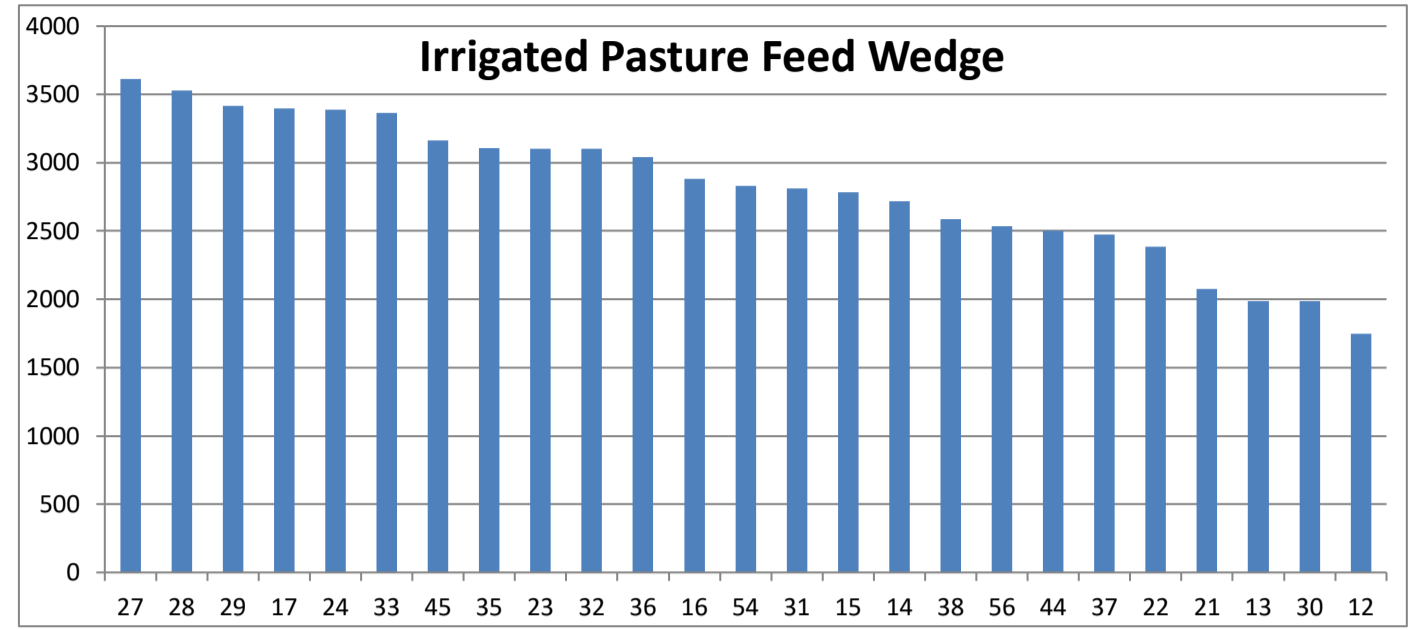
\*Please note all pasture calculations detailed above are based on the current Grazed Milking Area

MILK PRODUCTION	Last Week	This Week	Variation
Average No. cows in milk (vat)	304	302	-2
Litres per cow	16.0	14.6	-1.4
% Fat	4.33	4.41	0.08
% Protein	3.20	3.20	0.00
MS/cow/day	1.21	1.11	-0.10
MS/ha/day	3.26	2.97	-0.29
BMCC	190	185	-5
	Budget	To Date	
Total Milk Production (kgMS)	91,479	63,985	
MS/ha YTD	802		



Last 7 days					
Milkers Diet	kg DM	MJ ME	CP (%)	NDF (%)	\$/cow
Pasture Intake	9.4	11.6	20.3	49.4	0.0
Concentrates	5.0	12.5	14.0	20.0	0.0
Silage*	3.6	10.0	17.0	45.0	0.0
Grazed forage	0.0	0.0	0.0	0.0	0.0
Other feeds	0.0	0.0	0.0	0.0	0.0
<b>Total</b>	<b>18</b>	<b>207.5</b>	<b>17.9</b>	<b>40.4</b>	<b>0</b>
<b>Target</b>		<b>210</b>	<b>16-18</b>	<b>&gt;33</b>	<b>0</b>

\*Silage feed value is estimated



Analysis			
Expected growth rate next 7 days (kgDM/ha/day)	19	Target Leaf Grazing Stage	2.5-3.0
Total Demand from Pasture (kgDM/ha/day)	51	Predicted APC 7 days time	2313
APC balance (kgDM/ha/day)	-32	Predicted APC Change	-222.9

## Discussion

The first pregnancy test has been conducted and there are 6 out of 70 heifers to re-check. This indicates at least 91% of heifers are in-calf. There are 190 cows due to calve in the first 6 weeks. Final results will be calculated following the second pregnancy test. Milk production has been lower than budgeted this season and has been further impacted this week by the heat. Pasture is being supplemented with pellets and silage. Turnips will be introduced gradually to the diet over the next week. 8 hectares of Goliath rape has been sown for winter feed. This is being irrigated so it will germinate.

# 23 January 2019

