

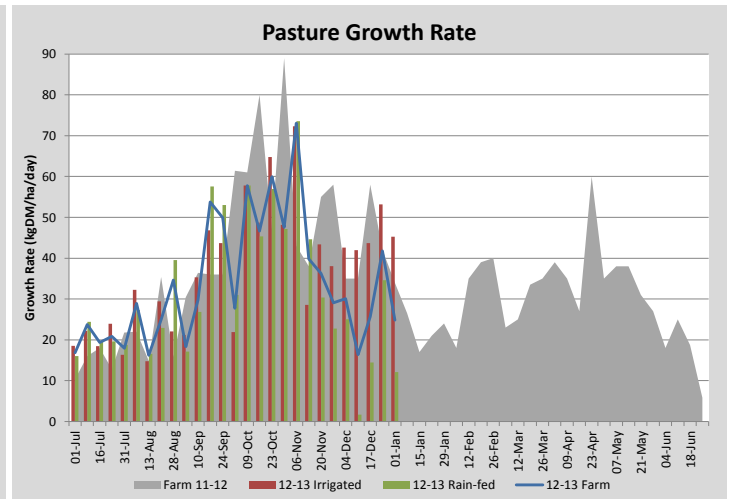
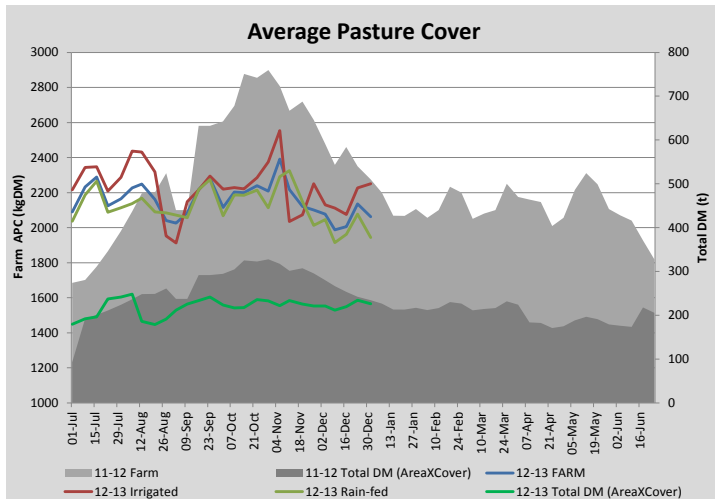
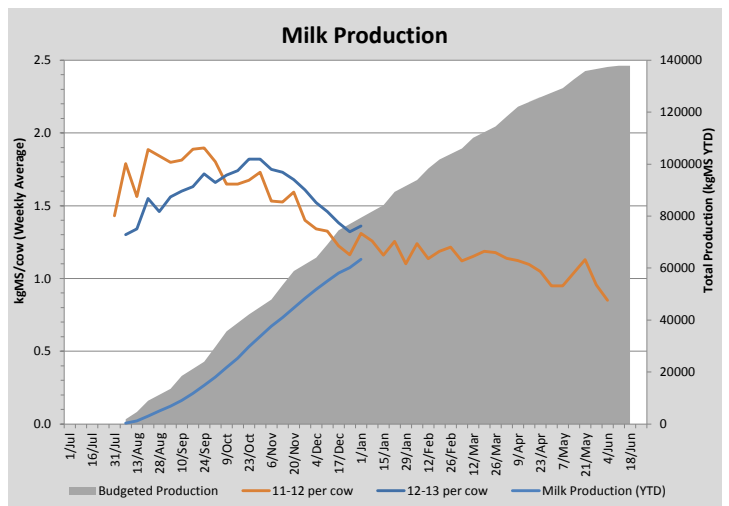
Key Summary Points

- 1** Rain-fed growth jumped after the pre-xmas rains but has slowed considerably in the last 7 days
- 2** We have increased silage intake to extend rotation length and attempt to hold average cover
- 3** Key focus the next 7 days on maximising growth from irrigation through accurate irrigation scheduling/nitrogen applications and keeping to set rotation lengths

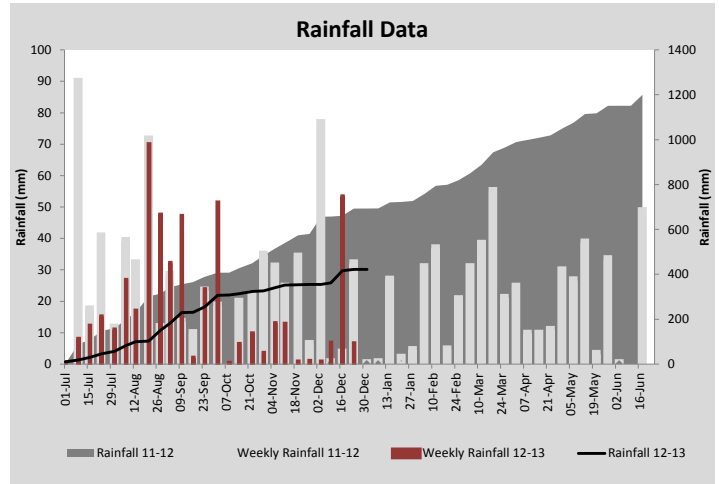
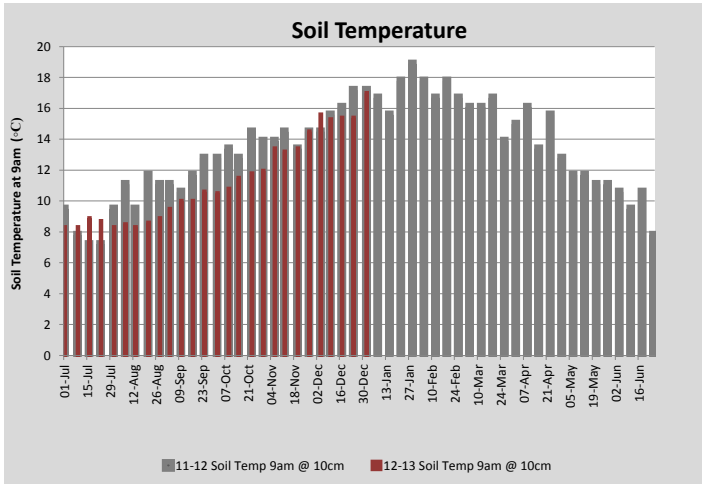
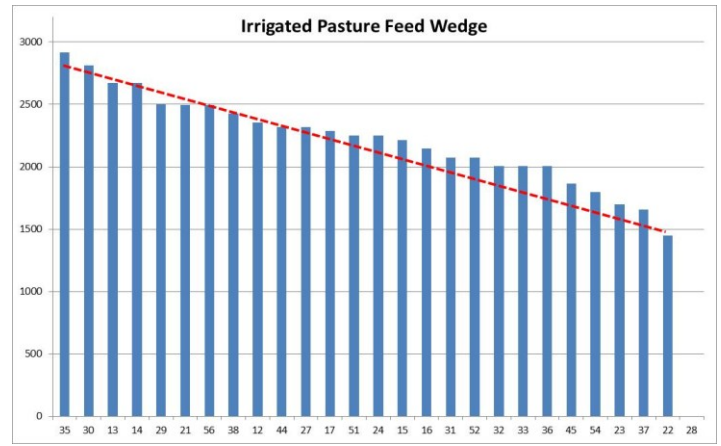
PASTURE INFORMATION	Farm			Irrigated			Rain-fed		
	Last Week	This Week	Variation	Last Week	This Week	Variation	Last Week	This Week	Variation
Grazed milking area (ha)	109.6	109.6	0.0	42.1	42.1	0.00	67.4	67.4	0.00
Rotation Length (days)	41	39		28	28		56	52	
Grazing allocation per day (ha)	2.7	2.8	0.10	1.5	1.5	0.00	1.2	1.3	0.10
Average time since last grazed (days)	44	44	-0	26	27	-1	55	54	-1
Leaf appearance rate (days per leaf)	11	11	0	9	9	0	12	12	0
Average Pasture Cover (kgDM/ha)	2135	2062	-72	2227	2251	24	2077	1944	-133
Pasture Growth Rate (kgDM/ha/day)	42	25	-17	53	45	-8	35	12	-23
Post Grazing Biomass (kgDM/ha)	1500	1550	50						
Nitrogen applied YTD (kgN/ha)	169	169	0	0	0	0	0	0	0

*Please note all pasture calculations detailed above are based on the current Grazed Milking Area

MILK PRODUCTION	Last Week	This Week	Variation
No cows in milk (vat)	315	315	0.00
Litres per cow	18.5	19.3	0.72
% Fat	4.12	4.16	0.04
% Protein	2.87	2.93	0.05
MS/cow/day	1.32	1.36	0.04
MS/ha/day	3.82	3.54	0.28
BMCC	200	178	22.00
Average Liveweight (kg)			
	Budget	To Date	Variation
Total Milk Production (kgMS)	79414	63390.00	80%
MS/ha YTD	709	566	-143



Last 7 days					
Milkers Diet	kg DM	ME	CP	NDF	\$/cow
Pasture Intake	10.0	10.5	0.0	0.0	0.0
Concentrates	4.5	12.0	0.0	0.0	0.0
Silage	3.5	10.0	0.0	0.0	0.0
Grazed forage	0.0	0.0	0.0	0.0	0.0
Other feeds	0.0	0.0	0.0	0.0	0.0
Total	18	194	0	0	0
Target	18		0	0	0



Analysis			
Expected growth rate next 7 days (kgDM/ha/day)	22	Target Leaf Grazing Stage	3.0
Total Demand from Pasture (kgDM/ha/day)	27	Predicted APC 7 days time	2025
APC balance (kgDM/ha/day)	-5	Predicted APC Change	-37.2

Discussion

We skipped a report over the Christmas break but the data for the last two weeks is included in the graphs/tables above. Pasture growth picked up following the rains pre-Christmas but has dropped back considerably the past 7 days following dry and windy conditions. We sped up the rain-fed rotation slightly over the Christmas period to match the increased growth rates but we will add in more silage (4kg/cow/day total) and extend the rain-fed rotation back out to 60 days (1/60th of the available area per day) for the next 7 days. We are tracking at 80% of our originally budgeted production which reflects the increased first year heifer ratio in the herd (40%) and a challenging season to date. We are however 9% up on production at this time last year. We will apply nitrogen at 40kg/ha on irrigated paddocks behind the cows this week to keep maximising irrigated feed available to the cows.

1 January 2013

