

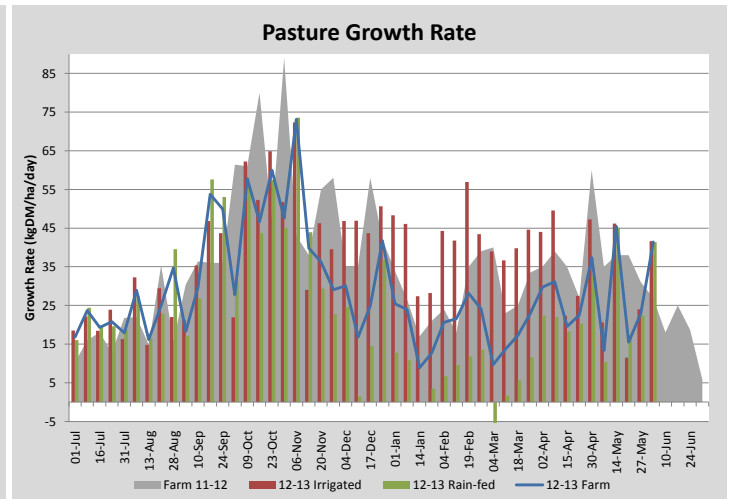
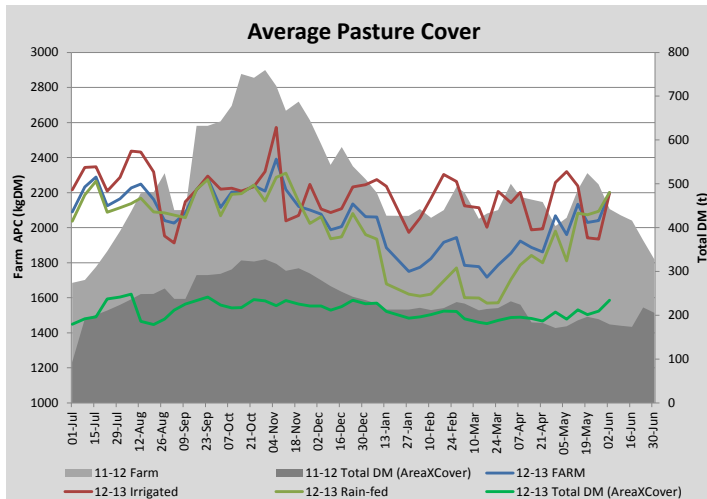
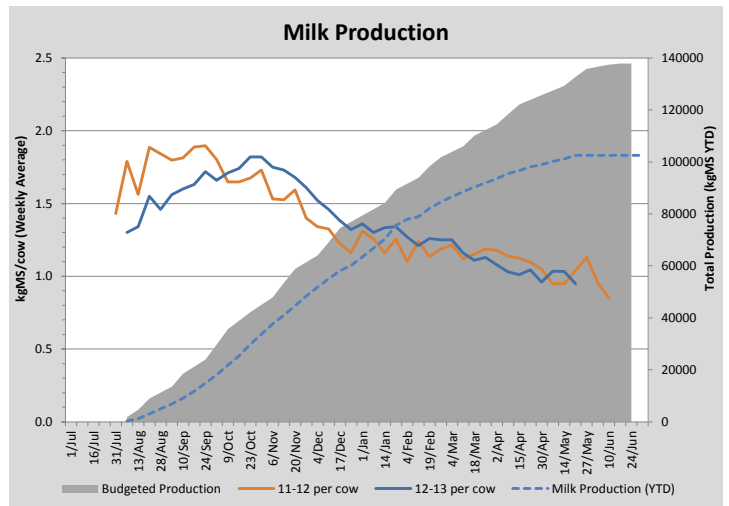
Key Summary Points

- 1** Average pasture cover as lifted significantly over the past week to 2200kgDM/ha which is right on target
- 2** Higher condition score cows are being transitioned onto the kale crop as of Monday
- 3** Soil temperatures have lifted and expected to hold for the next week

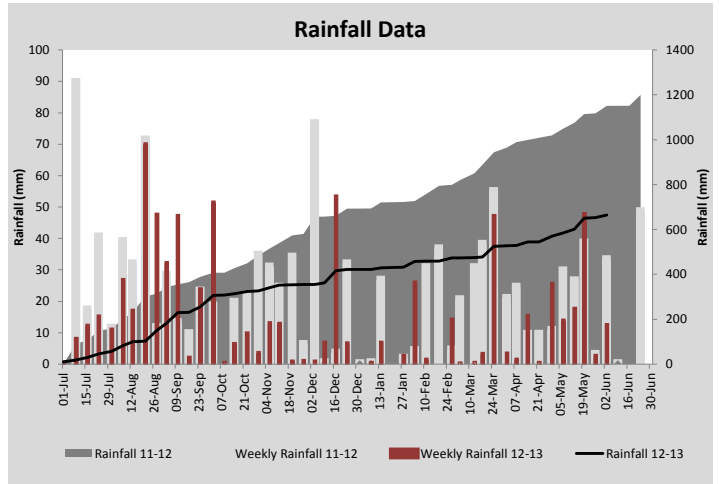
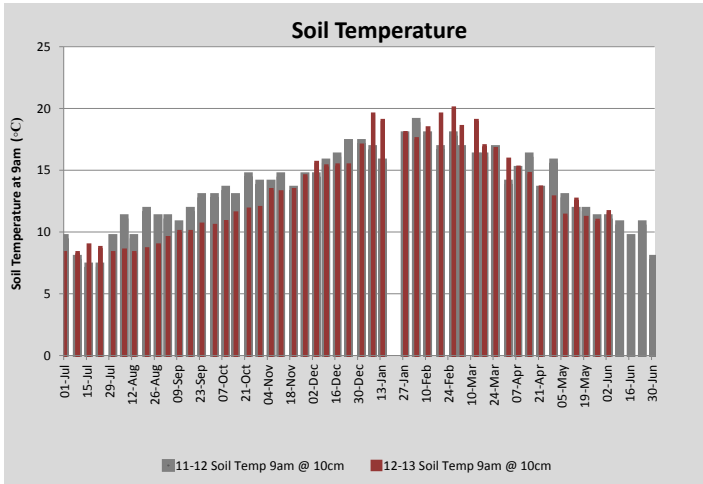
PASTURE INFORMATION	Farm			Irrigated			Rain-fed		
	Last Week	This Week	Variation	Last Week	This Week	Variation	Last Week	This Week	Variation
Grazed milking area (ha)	102.6	106.4	3.9	34.9	37.0	2.07	67.7	69.5	1.81
Rotation Length (days)	80	108		106	176		71	89	
Grazing allocation per day (ha)	1.3	1.0	0.29	0.3	0.2	0.12	1.0	0.8	0.17
Average time since last grazed (days)	50	43	-6	40	50	-10	55	40	-15
Leaf appearance rate (days per leaf)	16	15	-1	16	15	-1	16	15	-1
Average Pasture Cover (kgDM/ha)	2040	2199	160	1935	2197	262	2094	2200	107
Pasture Growth Rate (kgDM/ha/day)	23	41	18	24	42	18	22	41	19
Post Grazing Biomass (kgDM/ha)	1300	1400	100						
Nitrogen applied YTD (kgN/ha)	254	#N/A	#N/A	0	#N/A	#N/A	0	#N/A	#N/A

*Please note all pasture calculations detailed above are based on the current Grazed Milking Area

MILK PRODUCTION	Last Week	This Week	Variation
No cows in milk (vat)	0	0	0.00
Litres per cow	#N/A	#N/A	#N/A
% Fat	#N/A	#N/A	#N/A
% Protein	#N/A	#N/A	#N/A
MS/cow/day	#N/A	#N/A	#N/A
MS/ha/day	#N/A	#N/A	#N/A
BMCC	#N/A	#N/A	#N/A
Average Liveweight (kg)			
	Budget	To Date	Variation
Total Milk Production (kgMS)	136620	102526	75%
MS/ha YTD	1220	#N/A	#N/A



Last 7 days					
Milkers Diet	kg DM	ME	CP	NDF	\$/cow
Pasture Intake	0.0	0.0	0.0	0.0	0.0
Concentrates	0.0	0.0	0.0	0.0	0.0
Silage	0.0	0.0	0.0	0.0	0.0
Grazed forage	0.0	0.0	0.0	0.0	0.0
Other feeds	0.0	0.0	0.0	0.0	0.0
Total	0	0	0	0	0
Target	0		0	0	0



Analysis			
Expected growth rate next 7 days (kgDM/ha/day)	25	Target Leaf Grazing Stage	3.0
Total Demand from Pasture (kgDM/ha/day)	14	Predicted APC 7 days time	2277
APC balance (kgDM/ha/day)	11	Predicted APC Change	77.9

Discussion

Average pasture cover lifted significantly over the past 7 days with average growth rates across the platform of 41kgDM/ha/day taking us to 2200kgDM/ha APC. R1 stock are grazing oversown paddocks on the milking platform. Broad leaf weeds in new plantings ('Bealey' ryegrass / 'Mink' white clover) on the run-off will be sprayed in the coming week and then grazed with R1 heifers. As of Monday approximately half of the higher condition score cows are being transitioned onto the kale crop, with restricted 1/2 hour on/off grazing daily this week. The diet consists of 2-3kgDM/cow/day kale, 3kgDM/cow/day straw and 4kgDM/cow/day pasture. We will continue with on/off grazing for the remainder of this week and then look to increase the kale allocation. Lower condition score cows and R2 heifers are continuing to graze on the milking platform as one mob, receiving 3kgDM/head/day of grain in the milking shed. We are including grain in the ration at the moment as we believe that is price competitive with buying hay/silage at present while also helping us to empty the silos before the start of the season. The R2 heifers are training well to the stall gates and having a mix of older cows in this herd has proven to be advantageous in the training process.

3 June 2013

