

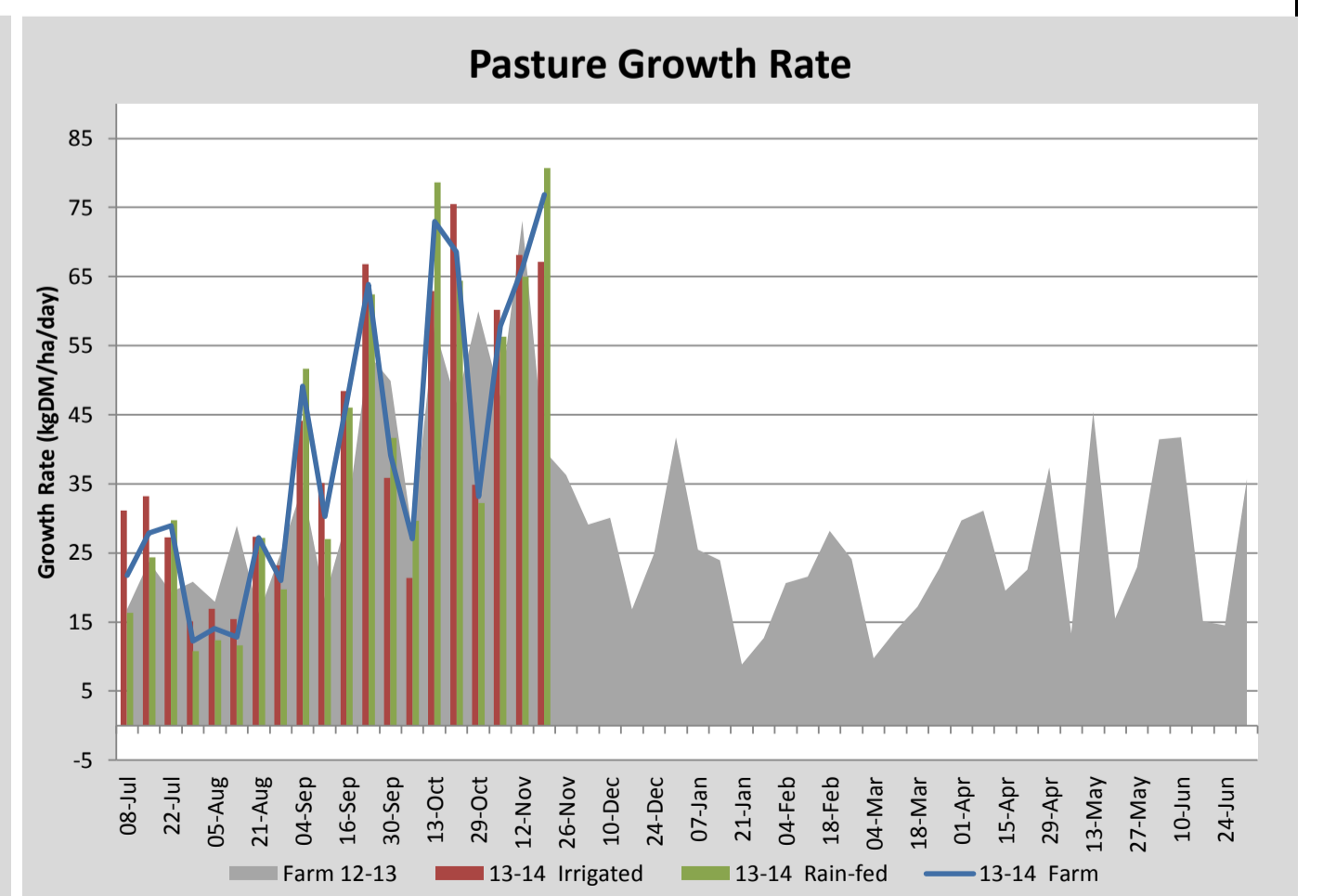
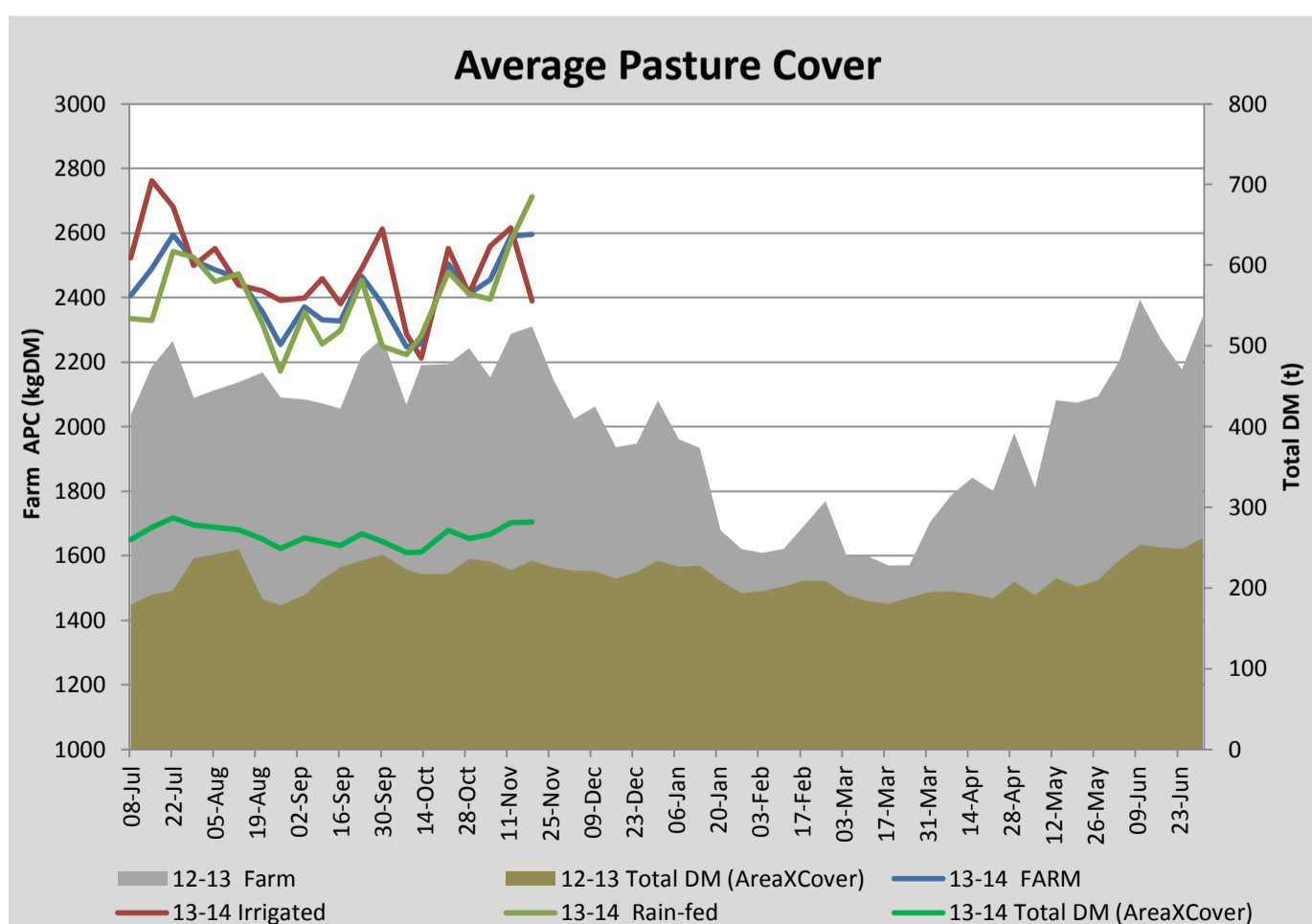
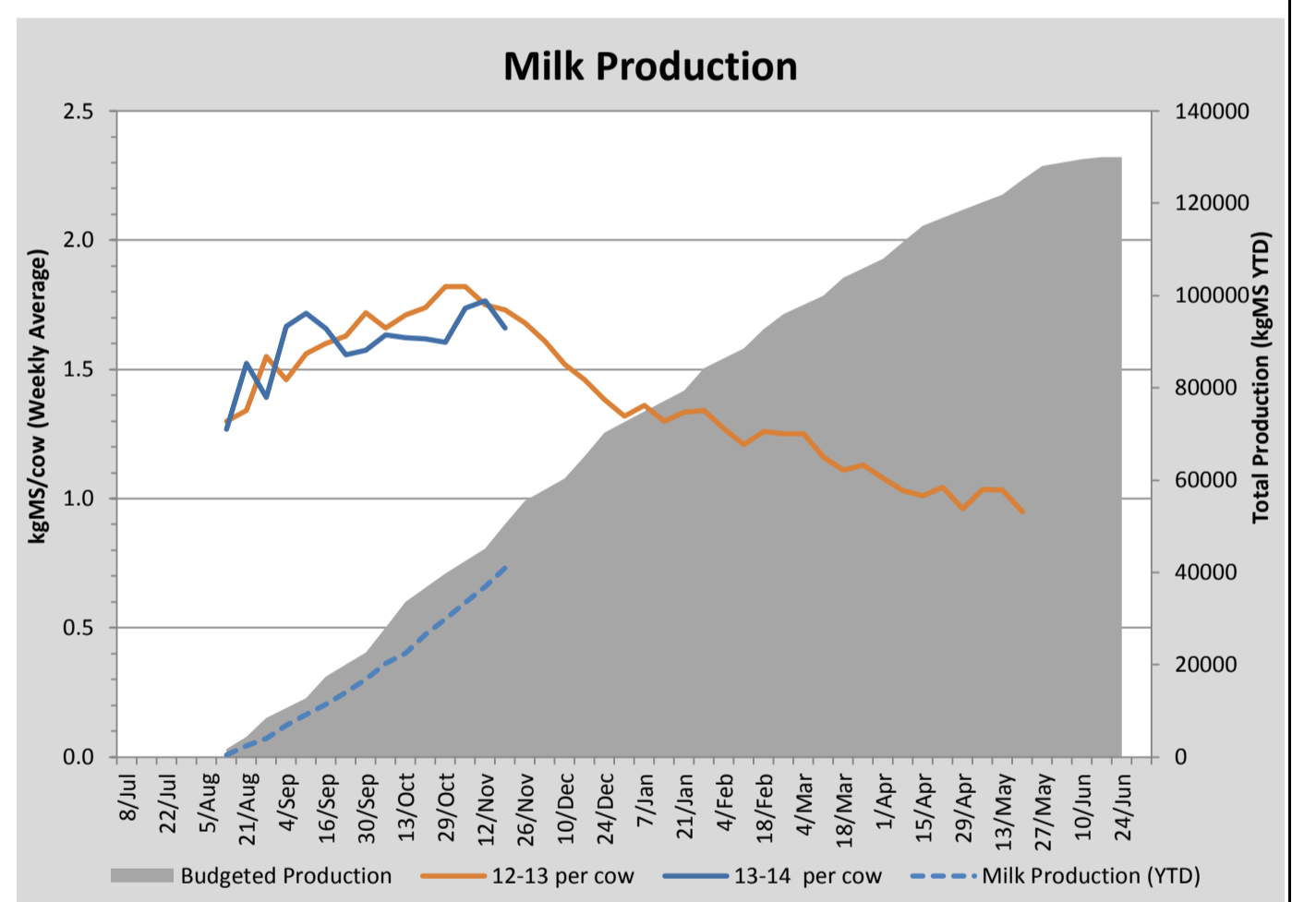
Key Summary Points

- 1 The average pasture cover and growth rates have increased over the past week.
- 2 Silage was made on 4.9 hectares of the milking area and another 8.9 hectares as been dropped from the grazing rotation.
- 3 Nitrogen continues to be applied to the milking and run-off areas.

PASTURE INFORMATION	Farm			Irrigated			Rain-fed		
	Last Week	This Week	Variation	Last Week	This Week	Variation	Last Week	This Week	Variation
Grazed milking area (ha)	108.4	108.4	-0.0	38.9	38.9	0.0	69.5	69.5	0
Rotation Length (days)	35	34	-1	32	21	-11	37	53	16
Grazing allocation per day (ha)	3.1	3.2	0.1	1.2	1.9	0.6	1.8	1.3	-0.5
Average time since last grazed (days)	30	31	1	31	32	1	29	30	1
Leaf appearance rate (days per leaf)	13	11	-2	12	11	-1	13	11	-2
Average Pasture Cover (kgDM/ha)	2591	2596	6	2616	2389	-227	2576	2712	136
Pasture Growth Rate (kgDM/ha/day)	66	77	11	68	67	-1	65	81	16
Post Grazing Biomass (kgDM/ha)	1788	1815	27						
Nitrogen applied YTD (kgN/ha)	34	40	6	0	5	5	0	7	7

*Please note all pasture calculations detailed above are based on the current Grazed Milking Area

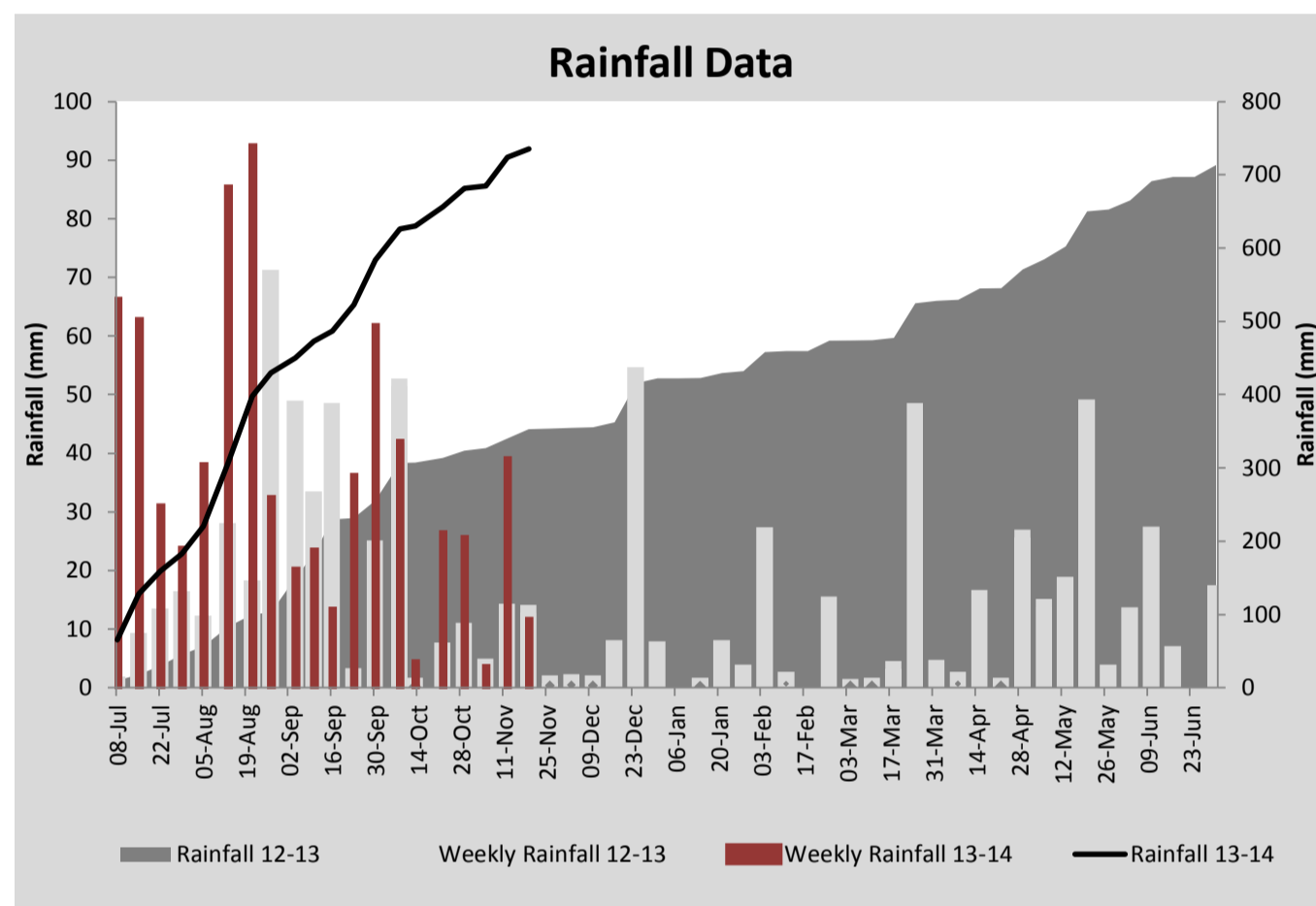
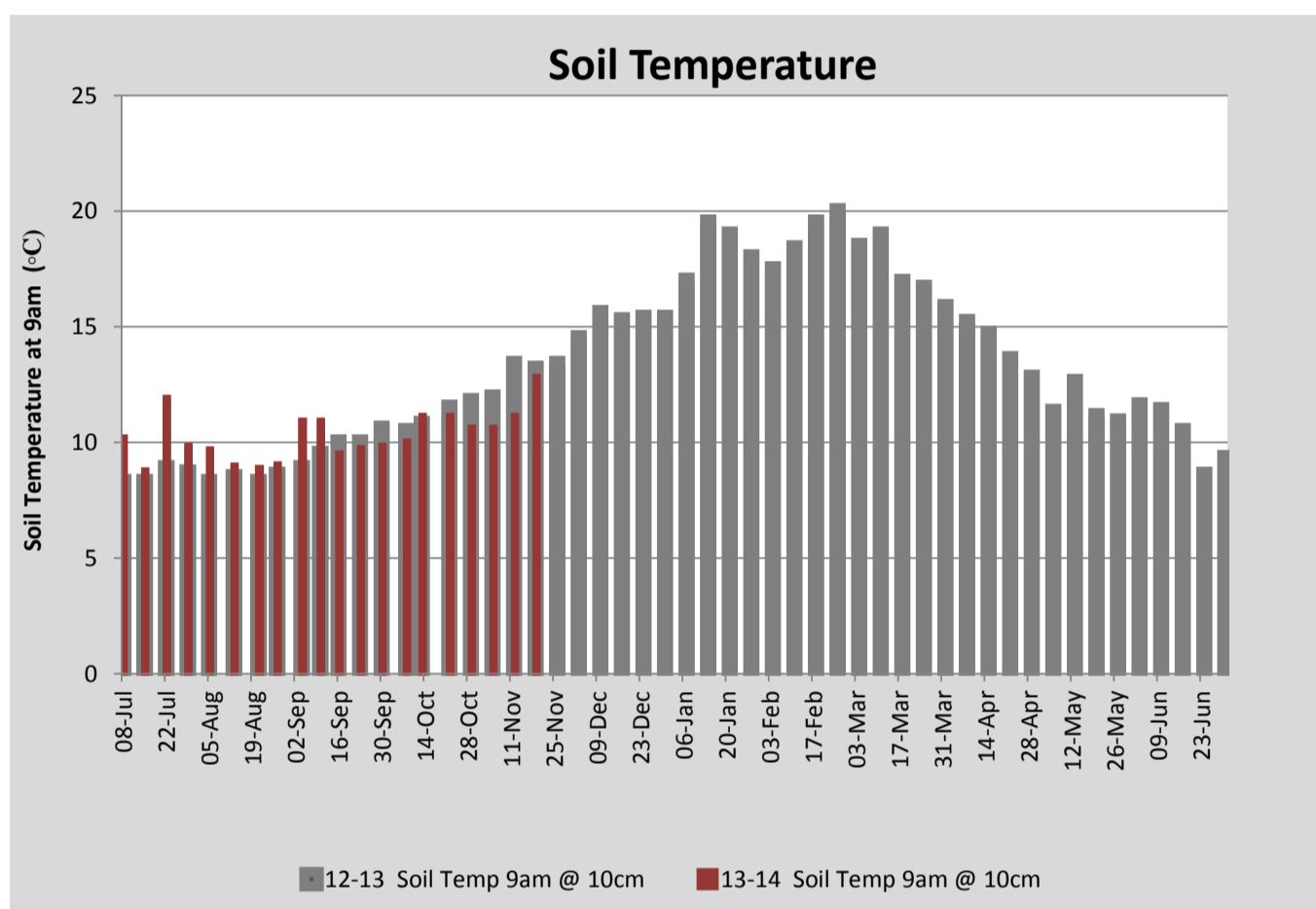
MILK PRODUCTION	Last Week	This Week	Variation
Average No. cows in milk (vat)	321	322	1
Litres per cow	24.8	23.6	-1.2
% Fat	3.95	3.94	-0.01
% Protein	3.17	3.12	-0.05
MS/cow/day	1.77	1.66	-0.11
MS/ha/day	5.02	4.73	-0.28
BMCC	228	166	62
Average Liveweight (kg)	485	486	1
	Budget	To Date	Variation
Total Milk Production (kgMS)	50,434	41,023	81%
MS/ha YTD	450	396	-55



Last 7 days					
Milkers Diet	kg DM	MJ ME	CP (%)	NDF (%)	\$/cow
Pasture Intake	14.8	11.9	15.2	45.4	0.0
Concentrates	4.0	13.0	11.0	21.0	0.0
Silage	0.0	0.0	0.0	0.0	0.0
Grazed forage	0.0	0.0	0.0	0.0	0.0
Other feeds	0.0	0.0	0.0	0.0	0.0
Total	18.8	228.1	14.3	40.2	0
Target		191	16-18	>33	0



Spring sown dryland pasture



Analysis			
Expected growth rate next 7 days (kgDM/ha/day)	70	Target Leaf Grazing Stage	2.0
Total Demand from Pasture (kgDM/ha/day)	47	Predicted APC 7 days time	2755
APC balance (kgDM/ha/day)	23	Predicted APC Change	158.8

Discussion

The average pasture cover on the milking area has increased further this week despite 4.9 hectares being cut for silage. As a result, a further 8.9 hectares has been dropped from the grazing rotation with the aim of reducing the rotation length to approximately 21 days. To date, 330 bales of silage have been made. To increase the surplus, nitrogen continues to be applied to the run-off (28 ha this week) and milking area (22 ha this week) at a rate of 32 kg N/ha. The soil temperature has increased and with rain expected, it should be possible to maintain, if not increase, pasture growth rates over the next week. In the first 4 weeks of mating, 270 cows have been mated. Any cow that hasn't been mated has been checked by a vet and treated for anoestrus if necessary. The TIA Dairy Centre will be holding an Open Day on December 4 from 10:30 a.m. with guest speakers, research & extension updates and a tour of the farm and research trials.

19 November 2013

