

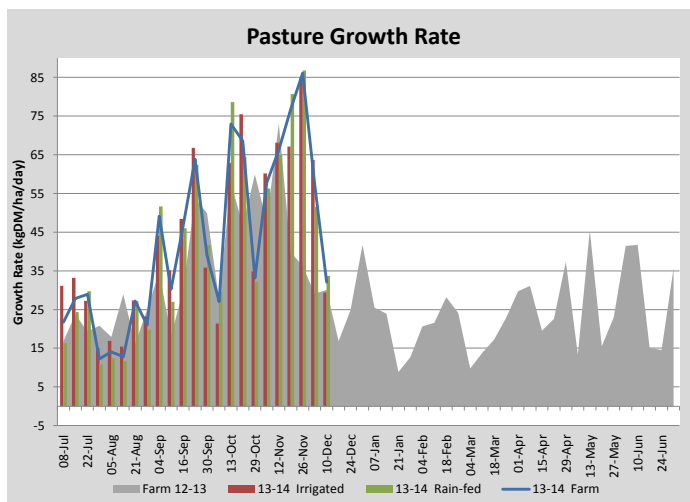
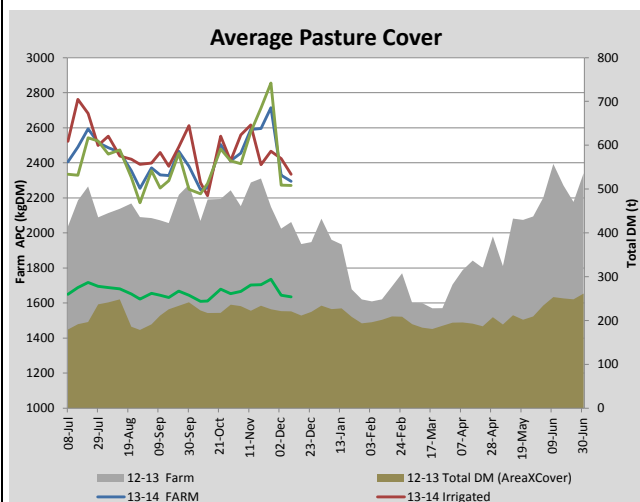
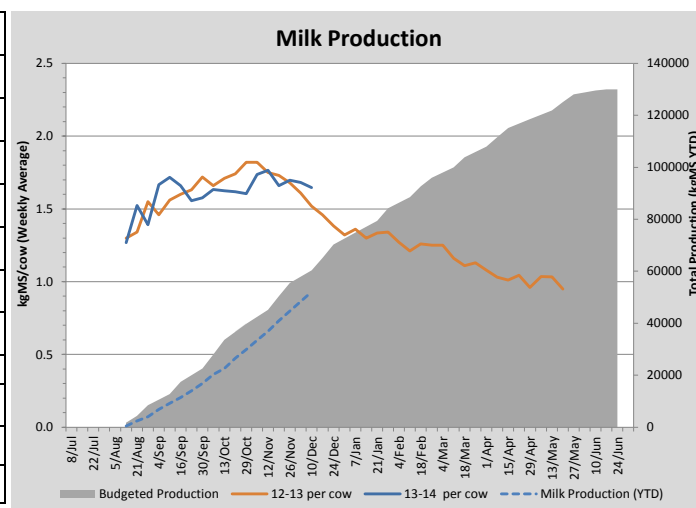
Key Summary Points

- 1** Average pasture cover decreased slightly this week due to lower pasture growth rates.
- 2** Calves were weaned to monitor growth and identify calves ready to be weaned.
- 3** Millet has been sown in a paddock under the centre pivot.

PASTURE INFORMATION	Farm			Irrigated			Rain-fed		
	Last Week	This Week	Variation	Last Week	This Week	Variation	Last Week	This Week	Variation
Grazed milking area (ha)	110.5	110.5	0.0	41.0	41.0	0.0	69.5	69.5	0
Rotation Length (days)	33	37	3	24	32	7	43	41	-3
Grazing allocation per day (ha)	3.3	3.0	-0.3	1.7	1.3	-0.4	1.6	1.7	0.1
Average time since last grazed (days)	25	31	6	29	29	0	23	32	9
Leaf appearance rate (days per leaf)	11	10	-1	10	10	0	11	10	-1
Average Pasture Cover (kgDM/ha)	2328	2295	-33	2423	2335	-88	2272	2271	-1
Pasture Growth Rate (kgDM/ha/day)	57	32	-25	64	29	-34	51	34	-18
Post Grazing Biomass (kgDM/ha)	1787	1799	12						
Nitrogen applied YTD (kgN/ha)	54	54	0	15	0	-15	13	0	-13

*Please note all pasture calculations detailed above are based on the current Grazed Milking Area

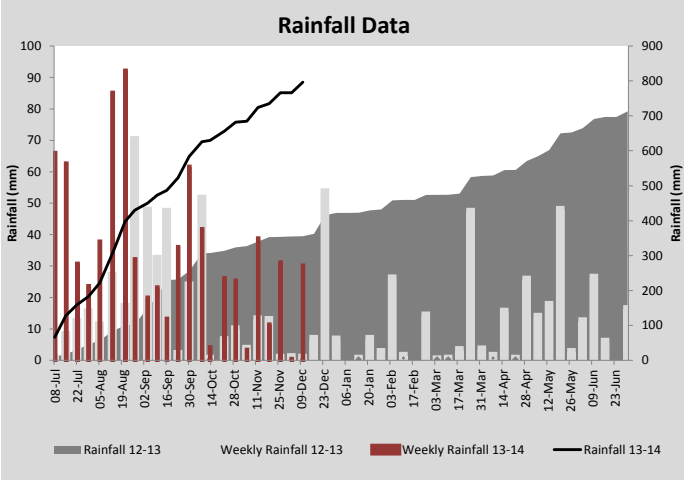
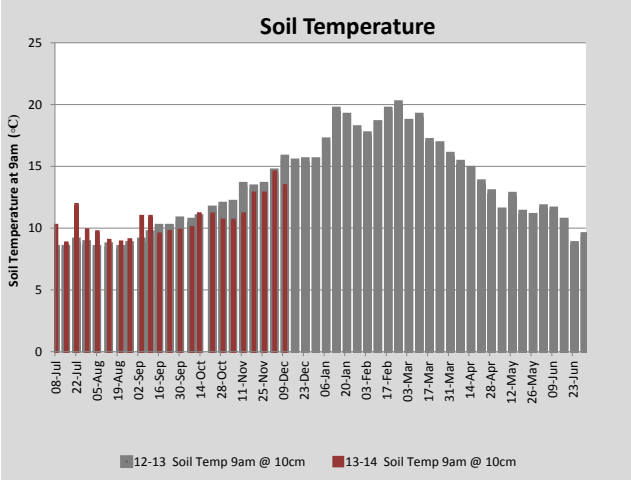
MILK PRODUCTION	Last Week	This Week	Variation
Average No. cows in milk (vat)	320	329	9
Litres per cow	23.6	22.9	-0.7
% Fat	4.03	4.13	0.10
% Protein	3.00	3.05	0.05
MS/cow/day	1.68	1.65	-0.03
MS/ha/day	4.76	4.80	0.03
BMCC	153	152	-1
Average Liveweight (kg)	488	495	7
	Budget	To Date	Variation
Total Milk Production (kgMS)	60,360	52,041	86%
MS/ha YTD	539	498	-41



Last 7 days					
Milkers Diet	kg DM	MJ ME	CP (%)	NDF (%)	\$/cow
Pasture Intake	16.8	11.0	19.6	50.2	0.0
Concentrates	4.0	13.0	11.0	21.0	0.0
Silage	0.0	0.0	0.0	0.0	0.0
Grazed forage	0.0	0.0	0.0	0.0	0.0
Other feeds	0.0	0.0	0.0	0.0	0.0
Total	20.8	236.8	17.9	44.6	0
Target		191	16-18	>33	0



(L-R) Roz and Craig Mackenzie with Arko Lucieir at the TIA Dairy Centre Open Day. The OktoKopter (unmanned aircraft) can be seen in the foreground.



Analysis			
Expected growth rate next 7 days (kgDM/ha/day)	44	Target Leaf Grazing Stage	2.0
Total Demand from Pasture (kgDM/ha/day)	48	Predicted APC 7 days time	2265
APC balance (kgDM/ha/day)	-4	Predicted APC Change	-29.5

Discussion

Pre-grazing pasture covers are declining (which is a positive as they were getting a bit high) and pasture quality is improving. Pasture growth rates were lower this week and not quite meeting cow requirements which will result in a decreasing average pasture cover. Soil temperature decreased which could be one of the contributing factors to the decrease in pasture growth rate. Paddock 12 has been sown with millet. This paddock had previously been sown with an annual ryegrass but germination was poor in parts of the paddock so the millet was oversown to ensure that a good yield will be achieved from this paddock. All the calves were weighed this week, with another 25 calves being weaned. The average growth rate of the previously weaned calves was 0.57 kg/day over the past month. The TIA Dairy Centre Open Day held on Wednesday, 4th December was attended by 90 people. A copy of the handout from the Open Day is available on the TIA website (www.tia.tas.edu.au).

10 December 2013

