

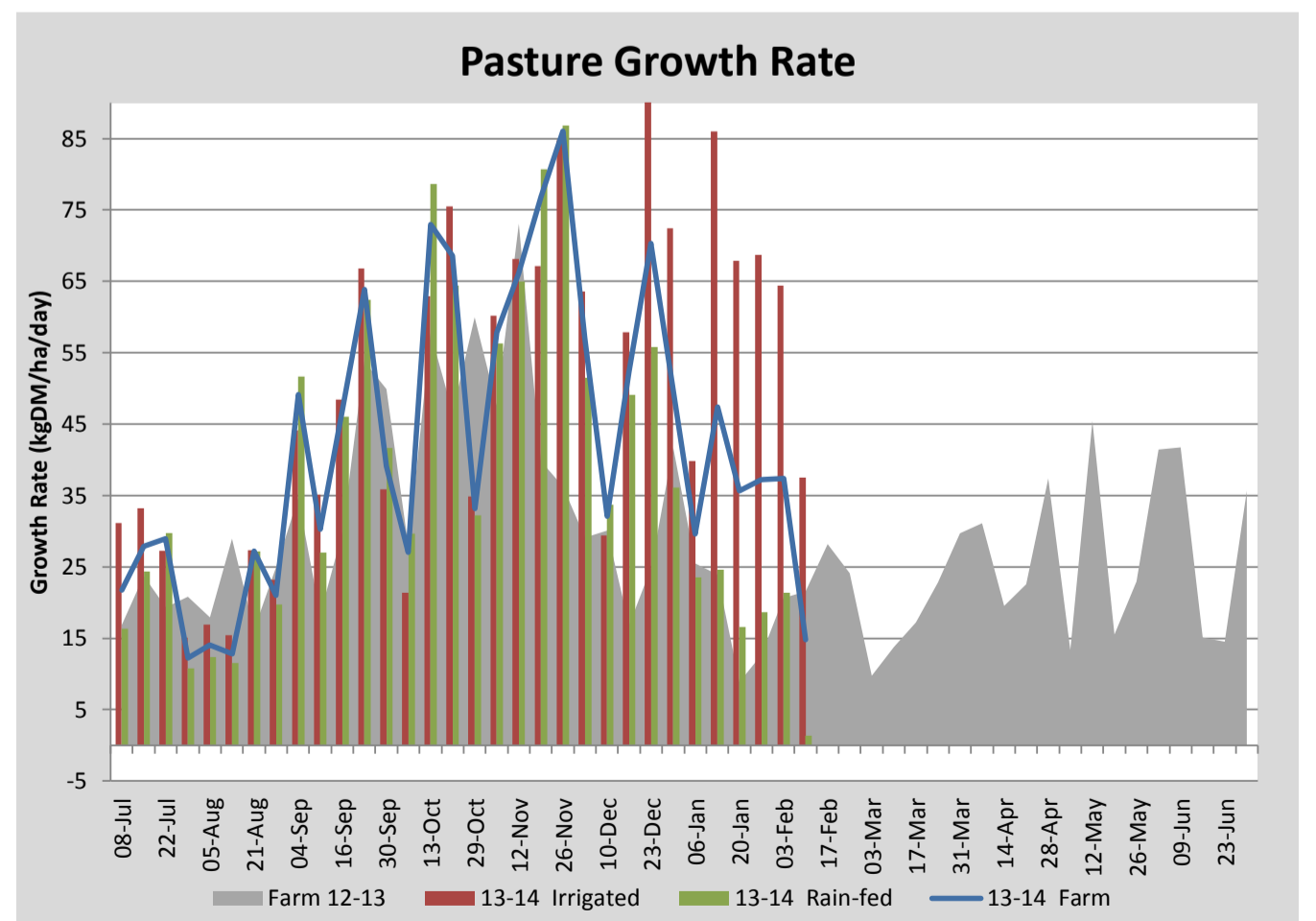
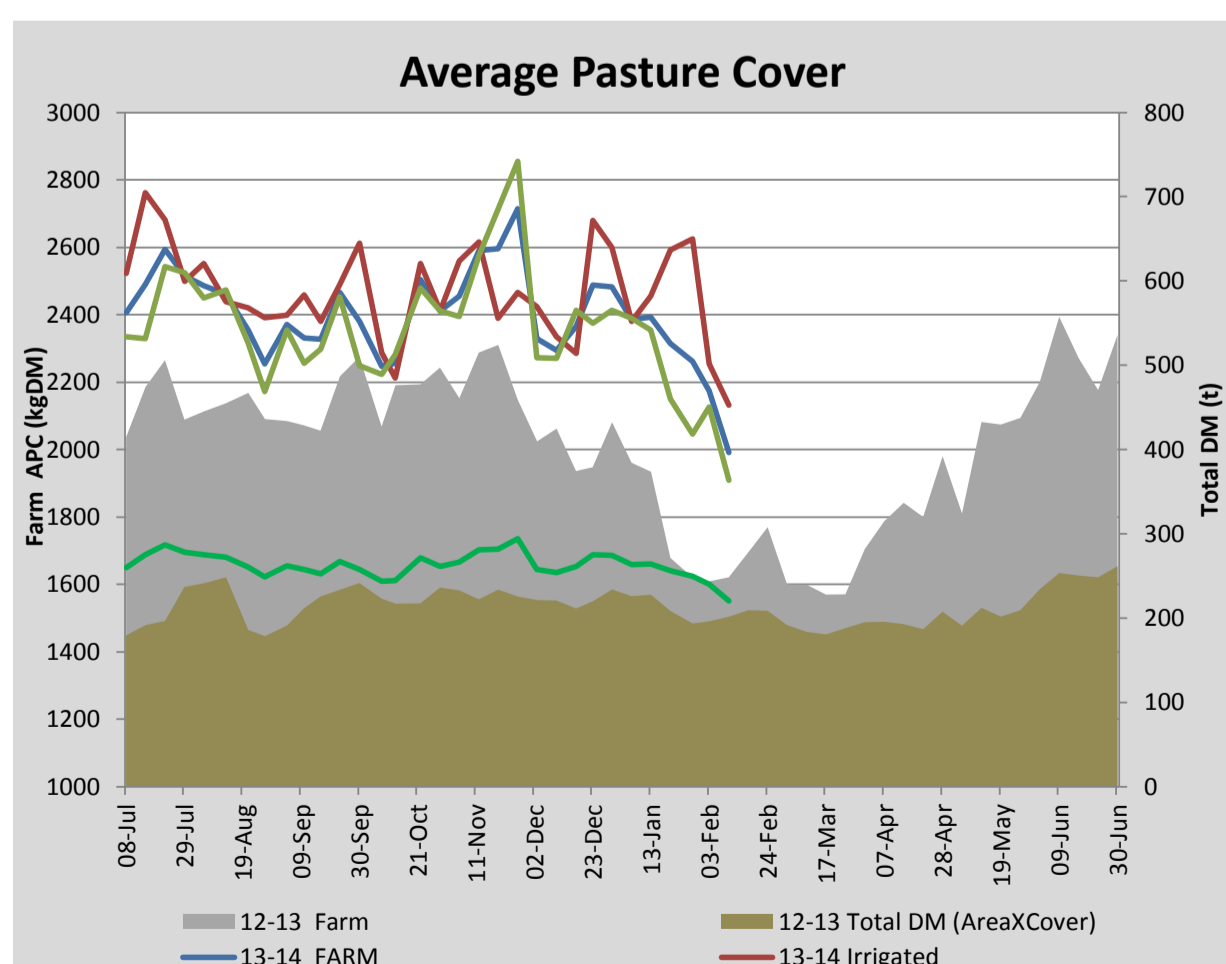
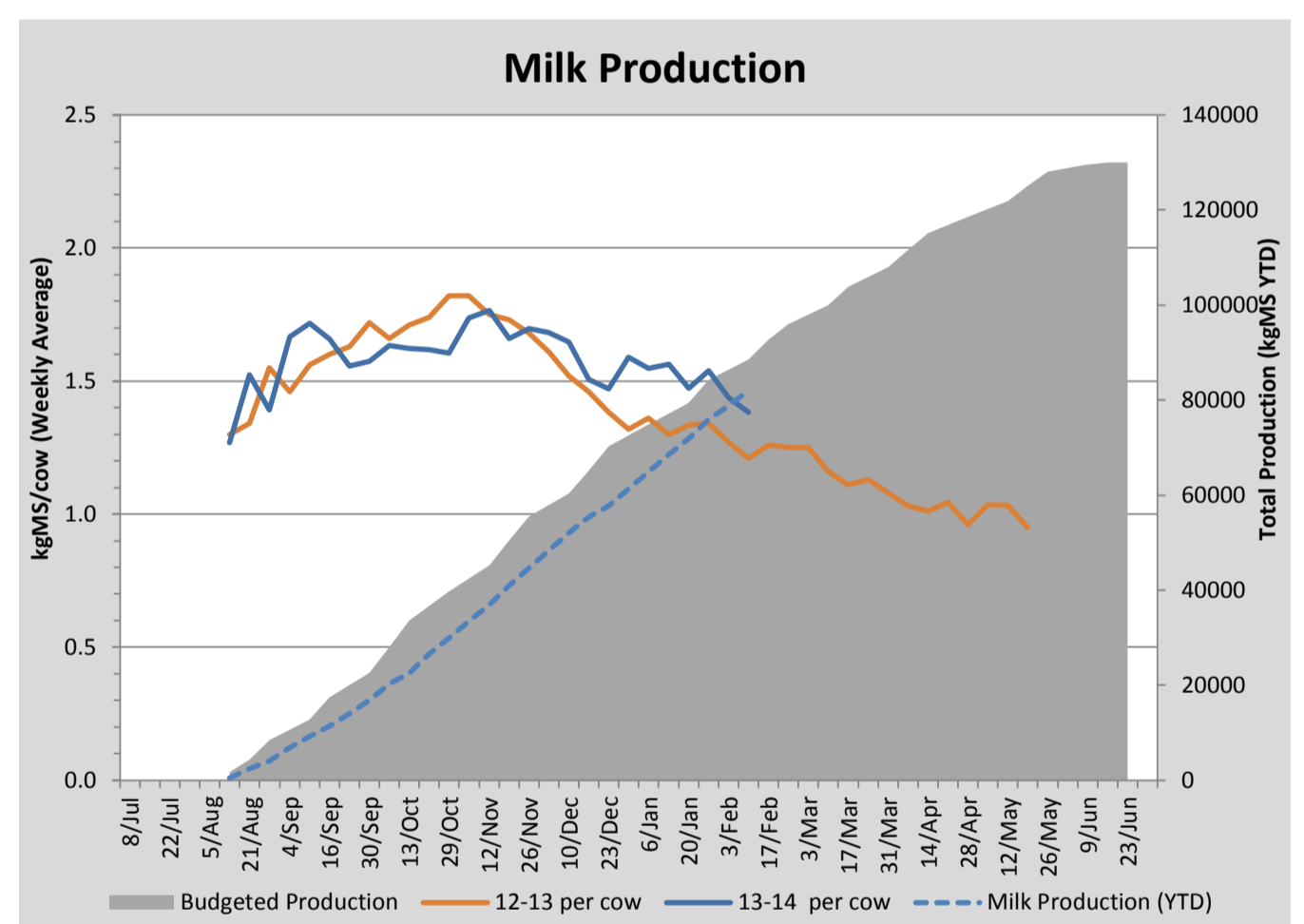
Key Summary Points

- 1 Average pasture cover has dropped significantly this week to 1991kgDM/ha with ungrazed rainfed paddocks reading on average 100kgDM/ha lower than the previous week.
- 2 Average per cow milk solid production has dropped to 1.38kgMS/cow. Cows producing less than 1 kgMS/day are to be dried off.
- 3 Tasks for the coming week include spraying off short rotation ryegrass paddocks ready for sowing winter crop and work on replacing northern boundary fence.

PASTURE INFORMATION	Farm			Irrigated			Rain-fed		
	Last Week	This Week	Variation	Last Week	This Week	Variation	Last Week	This Week	Variation
Grazed milking area (ha)	110.5	110.5	0.0	41.0	41.0	0.0	69.5	69.5	0
Rotation Length (days)	31	38	7	32	19	-13	30	99	69
Grazing allocation per day (ha)	3.6	2.9	-0.7	1.3	2.2	0.9	2.3	0.7	-1.6
Average time since last grazed (days)	37	36	-1	22	24	2	46	43	-3
Leaf appearance rate (days per leaf)	12	12	0	9	9	0	14	14	0
Average Pasture Cover (kgDM/ha)	2174	1991	-183	2254	2132	-122	2127	1908	-219
Pasture Growth Rate (kgDM/ha/day)	37	15	-23	64	38	-27	21	1	-20
Post Grazing Biomass (kgDM/ha)	1590	1428	-162						
Nitrogen applied YTD (kgN/ha)	101	101	0	0	0	0	0	0	0

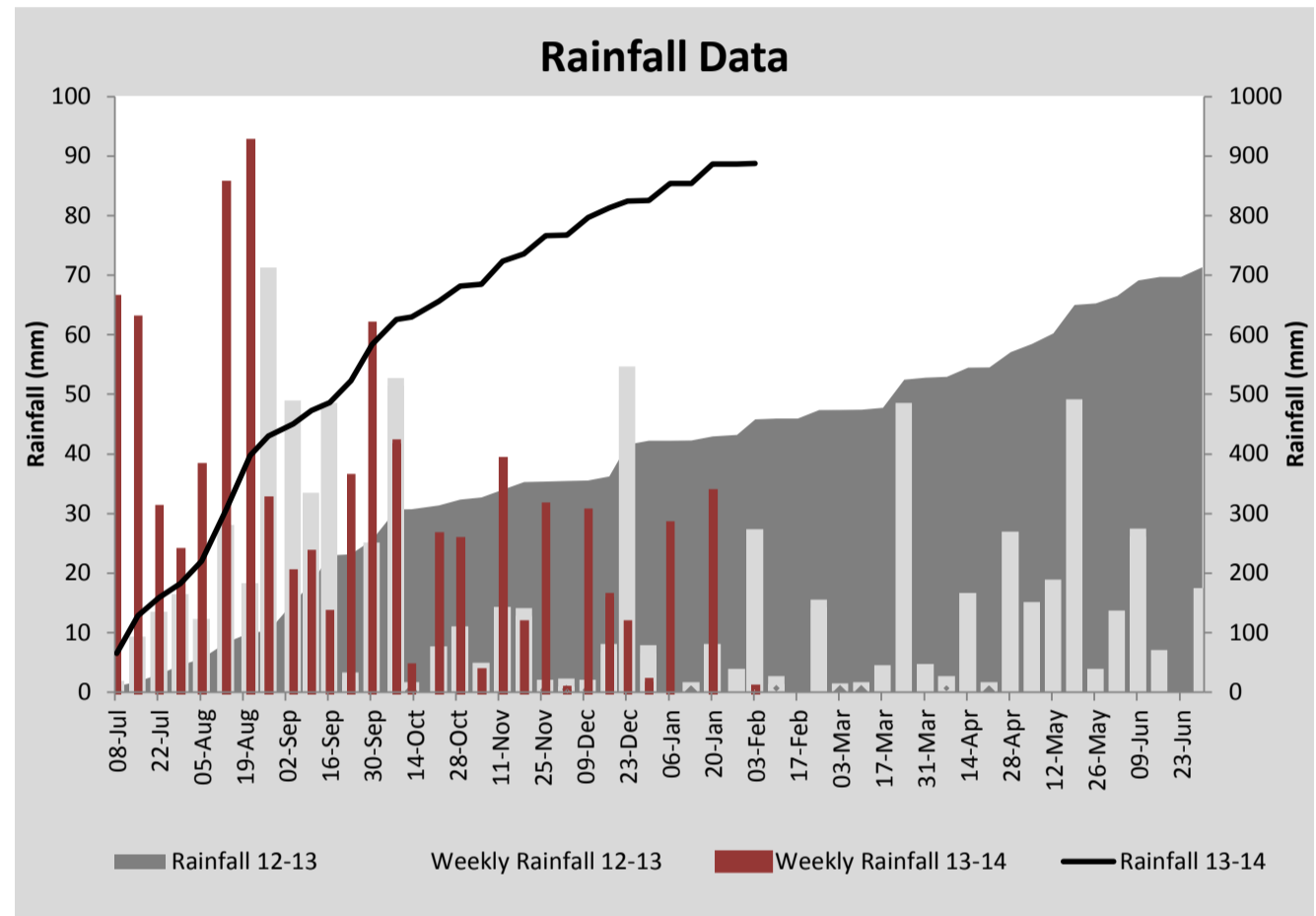
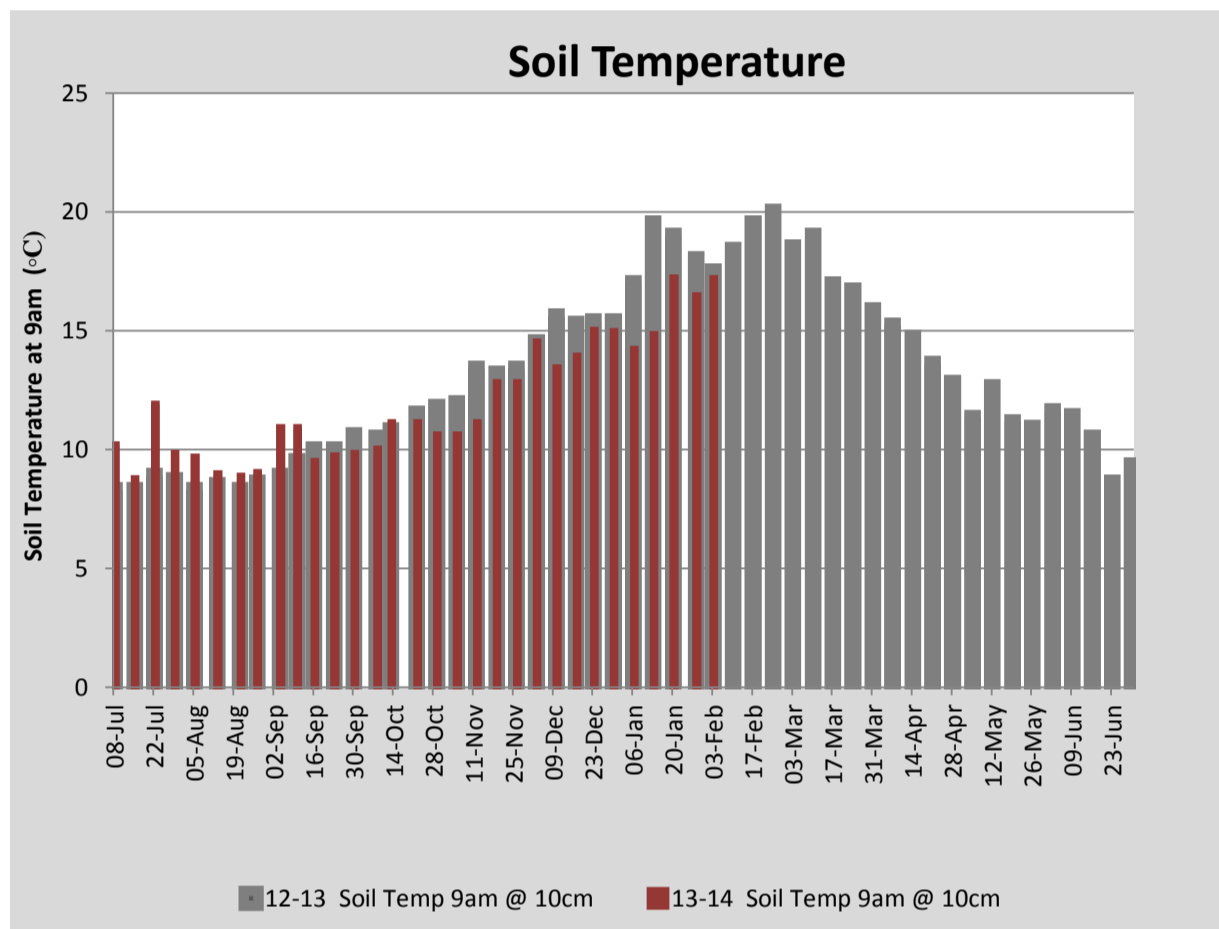
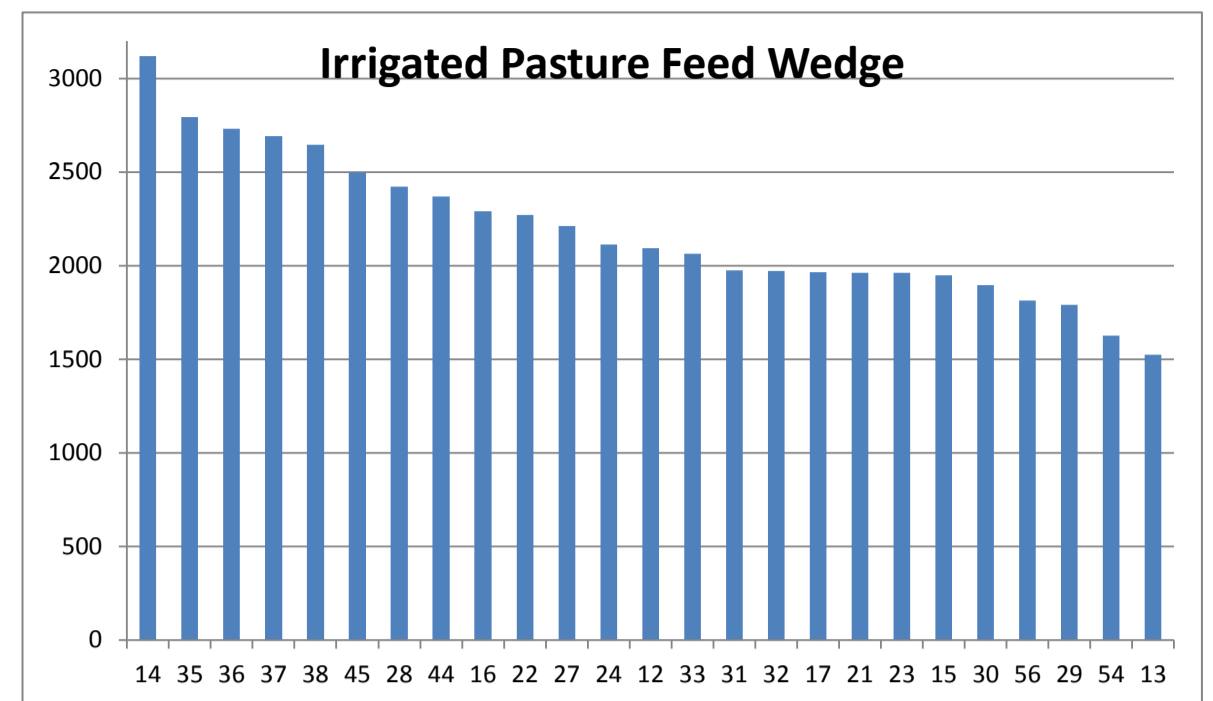
*Please note all pasture calculations detailed above are based on the current Grazed Milking Area

MILK PRODUCTION	Last Week	This Week	Variation
Average No. cows in milk (vat)	329	329	0
Litres per cow	19.6	18.5	-1.1
% Fat	4.14	4.18	0.04
% Protein	3.02	3.30	0.28
MS/cow/day	1.44	1.38	-0.06
MS/ha/day	4.19	4.02	-0.16
BMCC	147	148	1
Average Liveweight (kg)	509	509	0
	Budget	To Date	Variation
Total Milk Production (kgMS)	88,531	81,987	93%
MS/ha YTD	790	775	-15



Last 7 days					
Milkers Diet	kg DM	MJ ME	CP (%)	NDF (%)	\$/cow
Pasture Intake	0.0	11.7	18.4	46.6	0.0
Concentrates	4.5	13.0	11.0	21.0	0.0
Silage	1.8	10.5	15.0	49.0	0.0
Grazed forage	0.0	0.0	0.0	0.0	0.0
Other feeds	0.0	0.0	0.0	0.0	0.0
Total	6.27	77.09	12.1	28.9	0
Target		191	16-18	>33	0

Note: silage nutritional content is estimated based on pasture analysis during silage season, testing will be conducted early in 2014.



Analysis			
Expected growth rate next 7 days (kgDM/ha/day)	22	Target Leaf Grazing Stage	2.5
Total Demand from Pasture (kgDM/ha/day)	25	Predicted APC 7 days time	1968
APC balance (kgDM/ha/day)	-3	Predicted APC Change	-23.8

Discussion

Average pasture cover dropped significantly this week to 1991kgDM/ha. This was a much greater drop than expected last week. This can be explained by the continued drying of the rainfed paddocks and withering of the pasture in these paddocks. Looking at the measurements of ungrazed paddocks this week vs. readings for the same paddocks last week the estimated biomass has dropped by an average of 100kgDM/ha. As the grass dries, the density and the height decreases and so influences the pasture meter reading. Assuming that the biomass on ungrazed paddocks has not changed over the past week and that the drying has resulted in a lower volume, higher DM% sward, the actual pasture cover (farm) for this week is 2038kgDM/ha. We aim to maintain a round length greater than 60 days on the rainfed portion of the platform in the coming week. To achieve this we will increase the silage allocation to 3kgDM/head/day in the coming week and progressively dry off low producing cows. Per cow MS production has dropped again this week to 1.38kgMS/cow/day with a handful of cows (6) dropping below 1kgMS/day. These low producing cows will be dried off this coming week.

10 February 2014

